



YOUNGQUIST BROTHERS, Inc

GEOPHYSICAL LOGGING DIVISION

FLUID CONDUCTIVITY TEMPERATURE LOG

Company **HAZEN & SAWYER**
 Well **IW #1**
 Field **S. CTY REGIONAL WTP R/O EXP**
 County **COLLIER**
 State/Prv **FLORIDA**

Company **HAZEN & SAWYER**
 Well **IW #1**
 Field **S. CTY REGIONAL WTP R/O EXP**
 County **COLLIER** State **FLORIDA**

Location **NW S35, T49S, R26E**

Permanent Datum	PAD	Elevation	Other Services SEE COMMENTS
Log Measured From	PAD		
Drilling Measured From	PAD		

Date **16 JAN 2002**

Run Number	SIX		
Depth Driller	3220'		
Bottom Logged Interval	3220'		
Top Log Interval	1250'		
Open Hole Size	12.25"		
Type Fluid	WATER		
Density / Viscosity	N/A		
Max. Recorded Temp.	D-GF		
Estimated Cement Top	N/A		
Time Well Ready	0000		
Time Logger on Bottom	0000		
Equipment Number	102 FTM		
Location	FT MYERS		
Recorded By	LEE		
Witnessed By	A TOBIAS		

Run Number	Borehole Record		Run Number	Borehole Record	
	Bit	Top		Bottom	Bit
ONE	48.50"	SURFACE	335'		
TWO	12.25"	CASING	1420'		
THREE	40.50"	CASING	1305'		
SIX	12.25"	CASING	3220'		

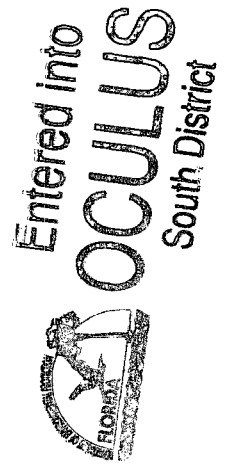
Casing Record	Size	Wgt/ft
Casing Record	4"	375 W/T
Casing Record	3"	375 W/T
Casing Record		

<<< Fold Here >>>

All interpretations are opinions based on inferences from electrical or other measurements and we cannot and do not guarantee the accuracy or correctness of any interpretation, and we shall not, except in the case of gross or willful negligence on our part, be liable or responsible for any loss, costs, damages, or expenses incurred or sustained by anyone resulting from any interpretation made by any of our officers, agents or employees. These interpretations are also subject to our general terms and conditions set out in our current Price Schedule.

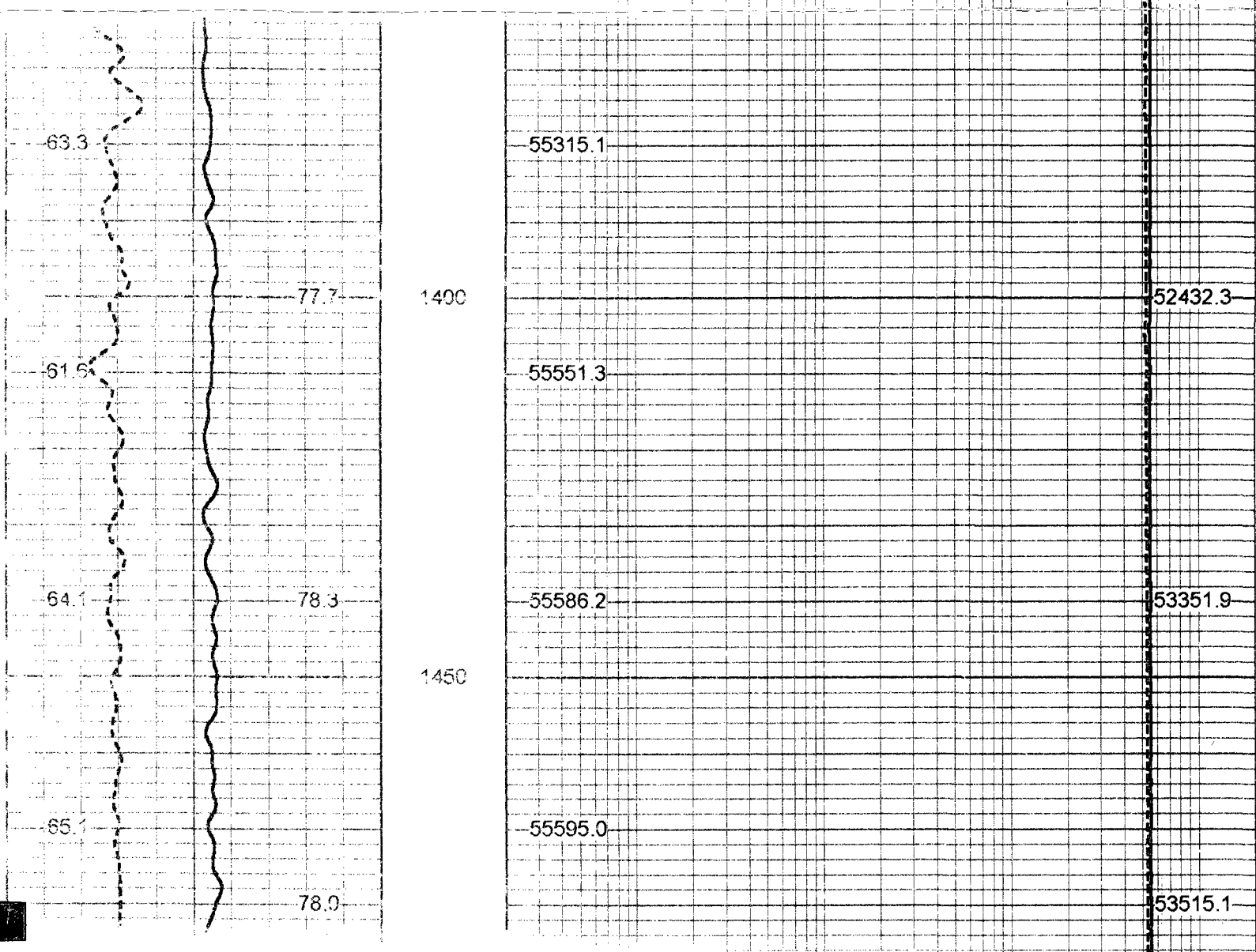
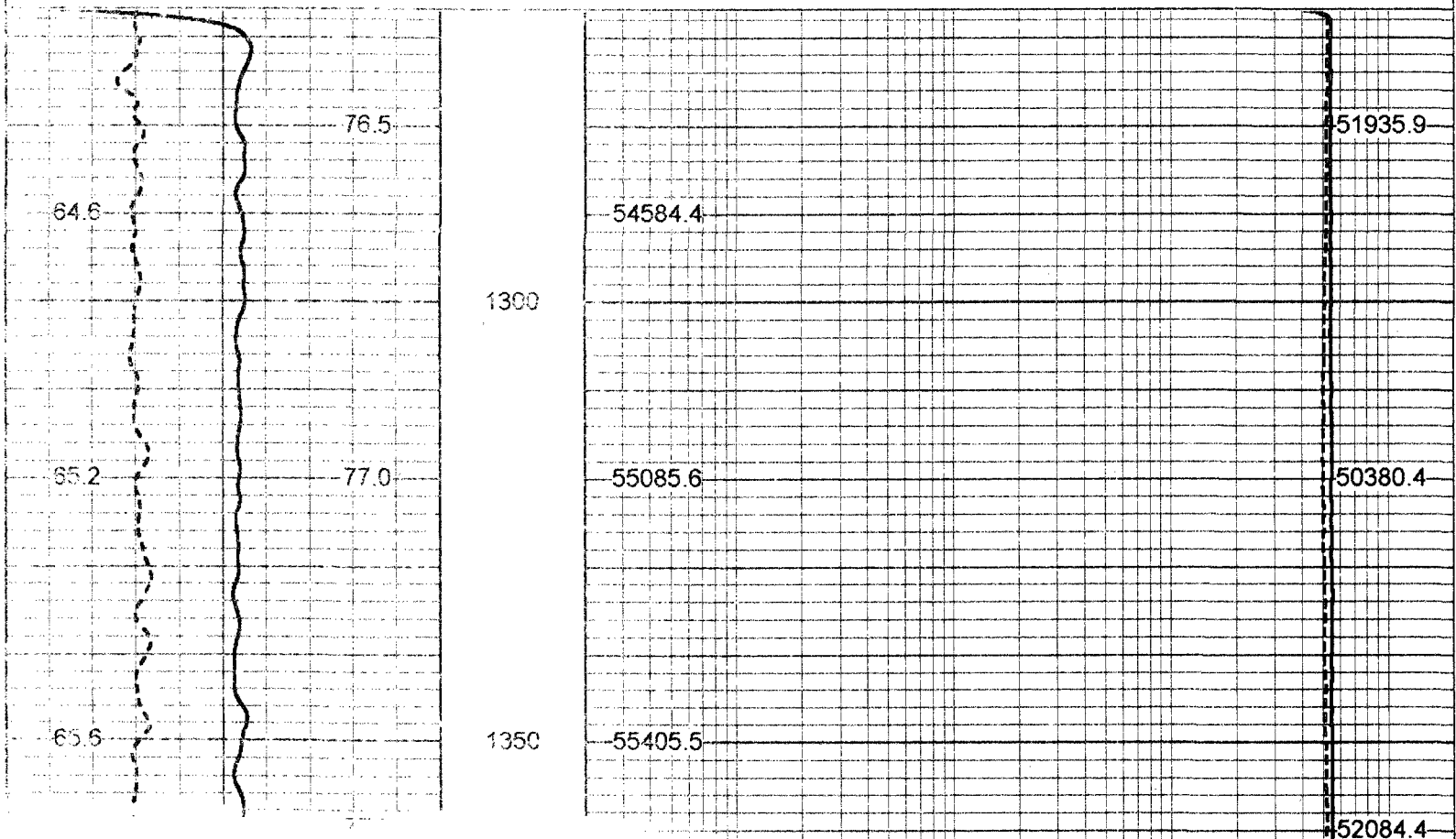
Comments

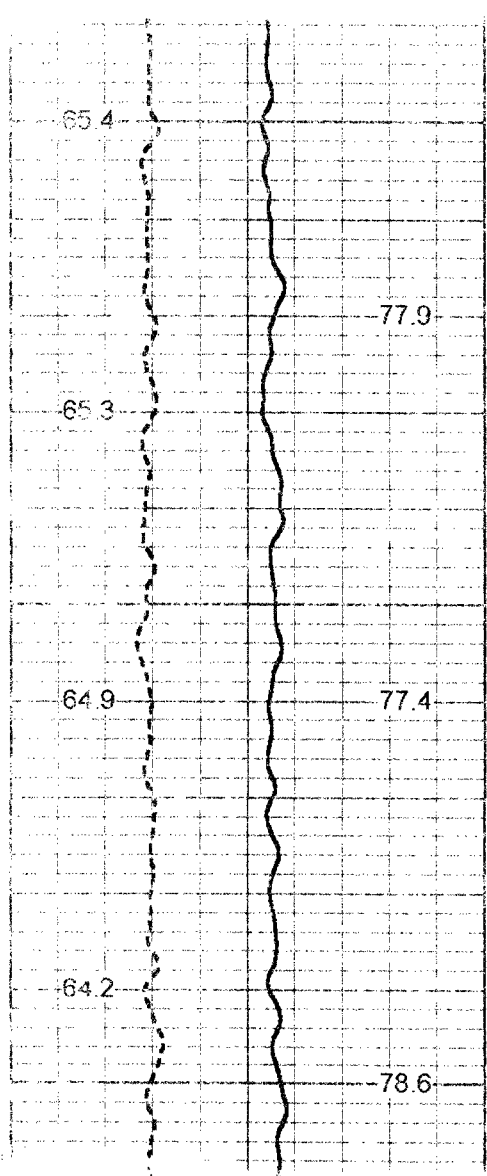
X-Y CALIPER
 GAMMA RAY
 DIL/LL3/SP
 BHC SONIC/VDL
 FLOWMETER
 DHTVS



Database File: scriw1-1.db
 Dataset Pathname: run0/FRTDYN
 Presentation Format: frt_mg.prs
 Dataset Creation: Wed Jan 16 18:47:16 2002 by Log VER_5.4
 Charied by: Depth in Feet scaled 1:240

50	DYNAMIC TEMP (degF)	100	20	DYNAMIC FLUID CONDUCTIVITY (uS)	200000
50	STATIC TEMP (degF)	100	20	STATIC FLUID CONDUCTIVITY (uS)	200000

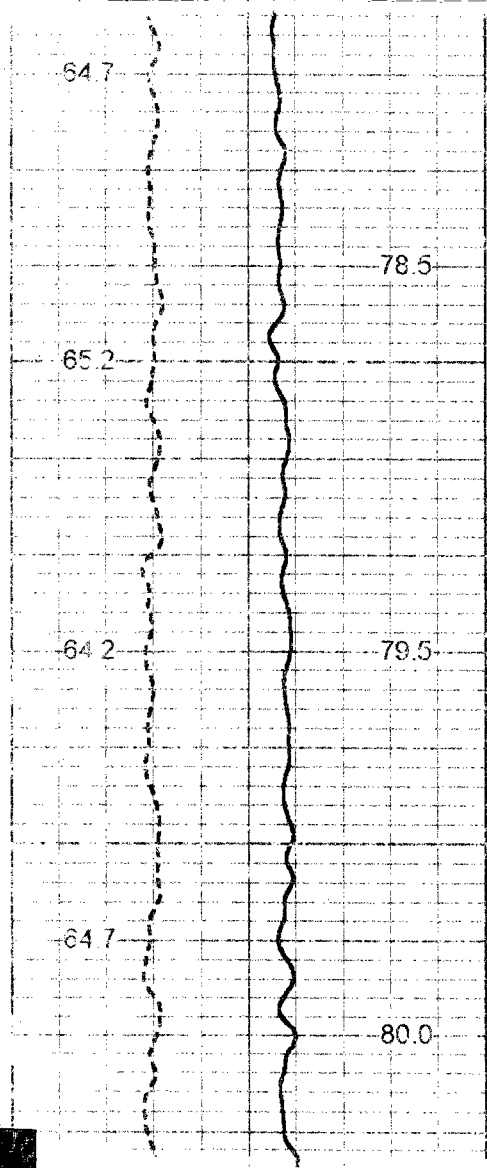
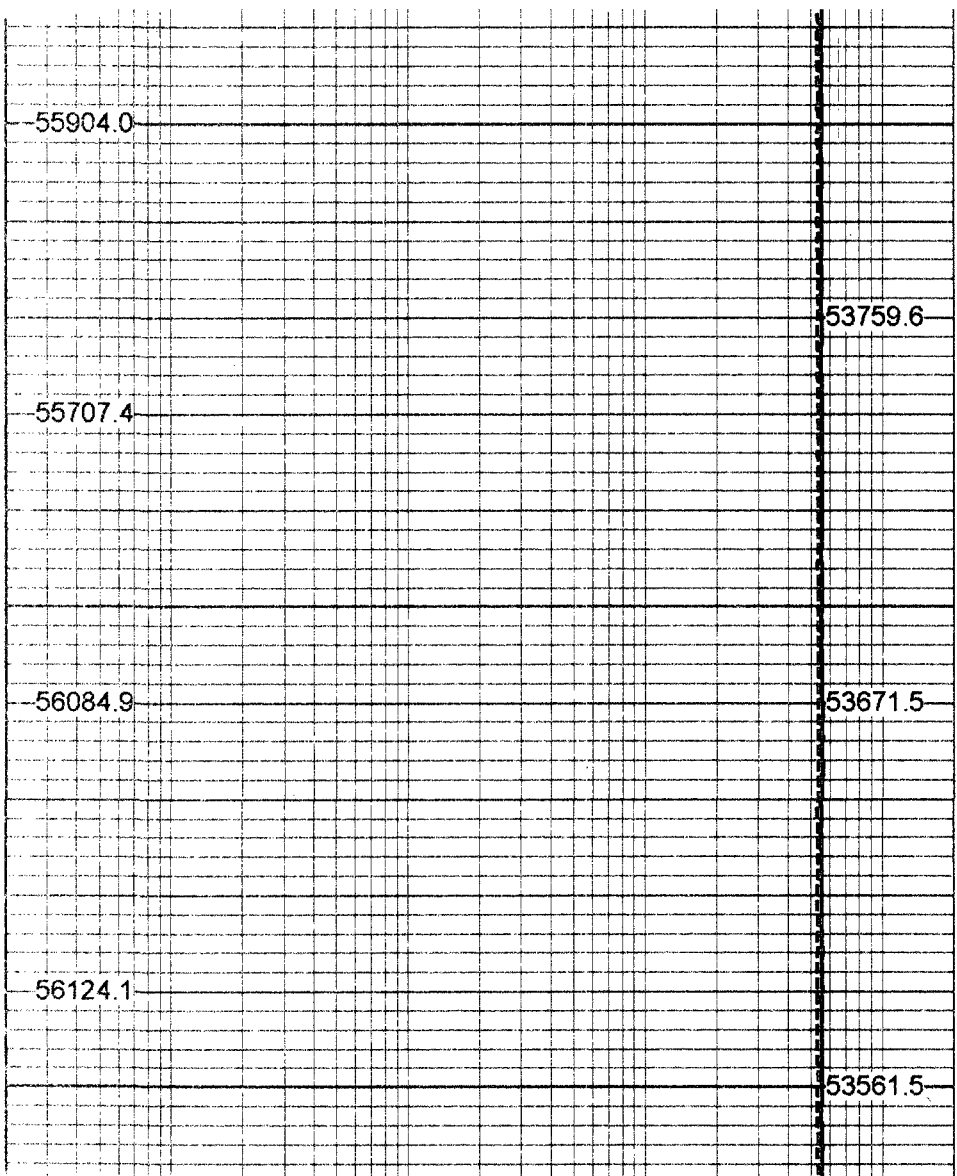




1500

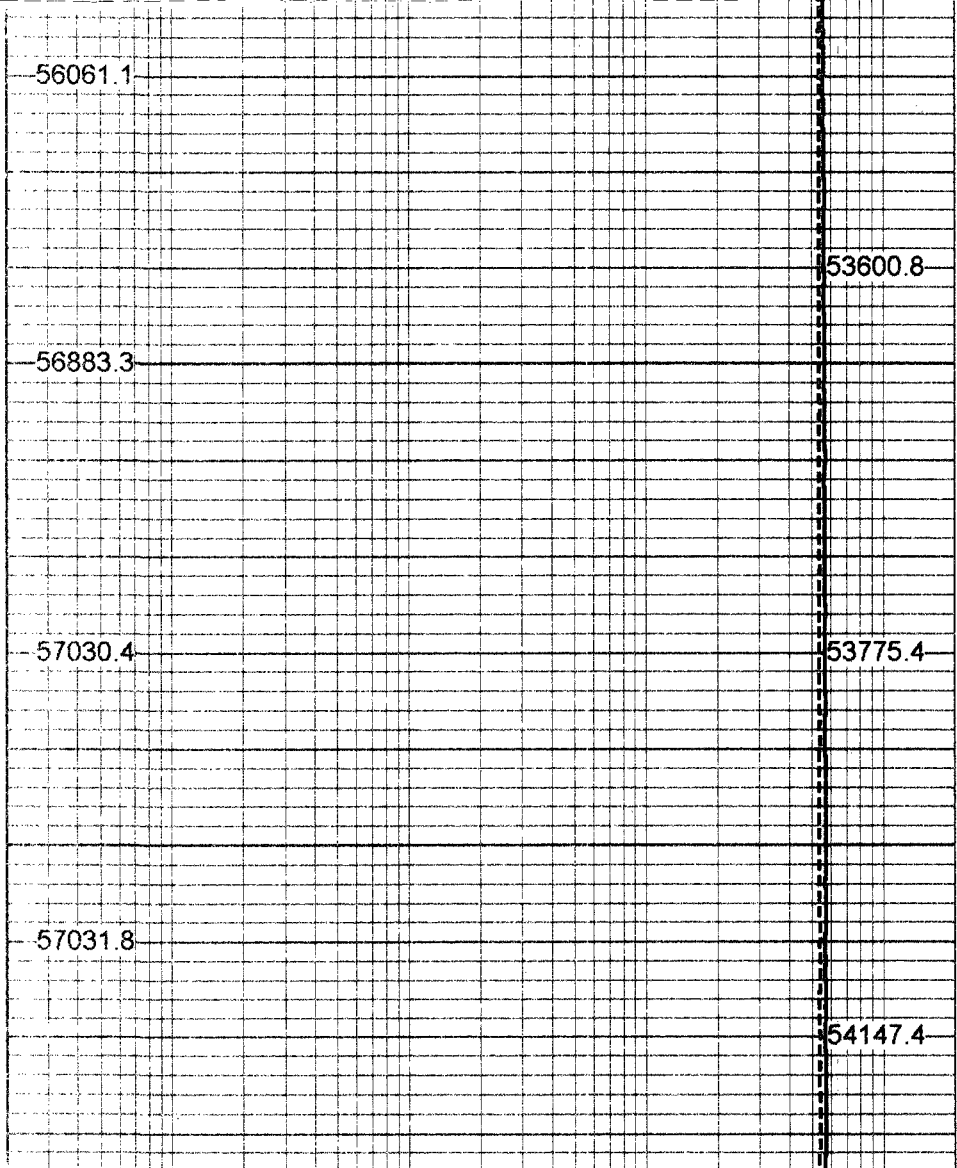
1550

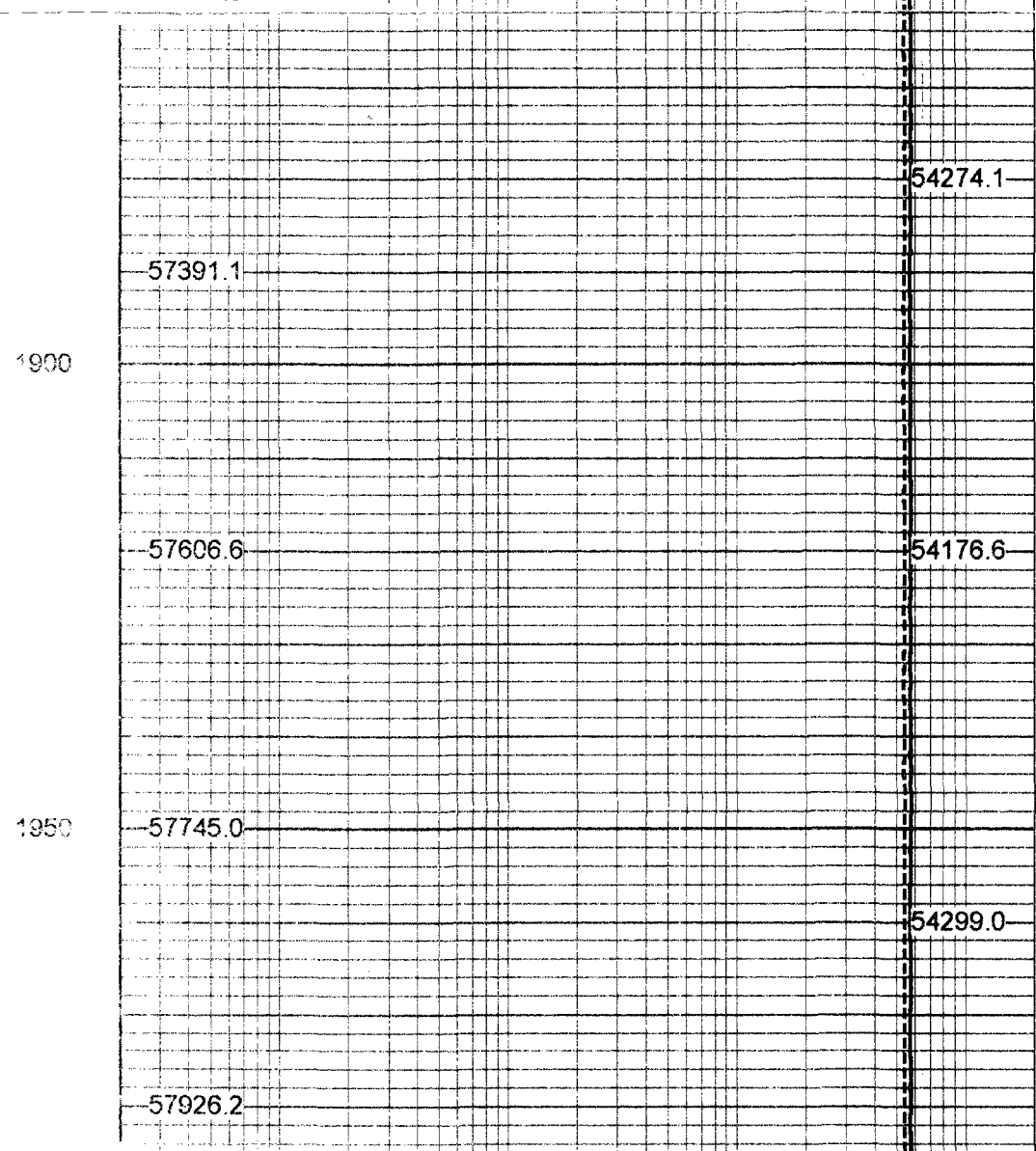
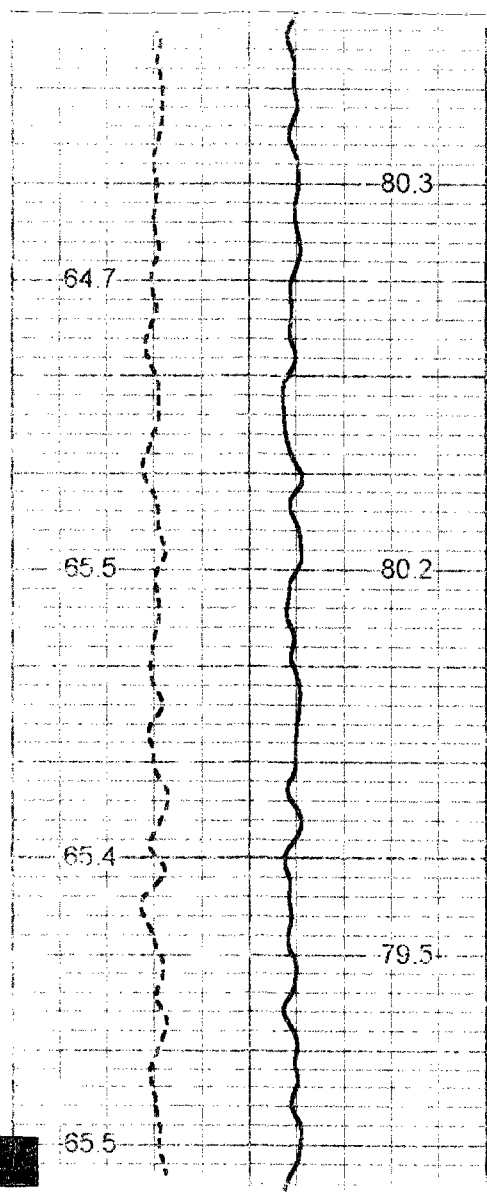
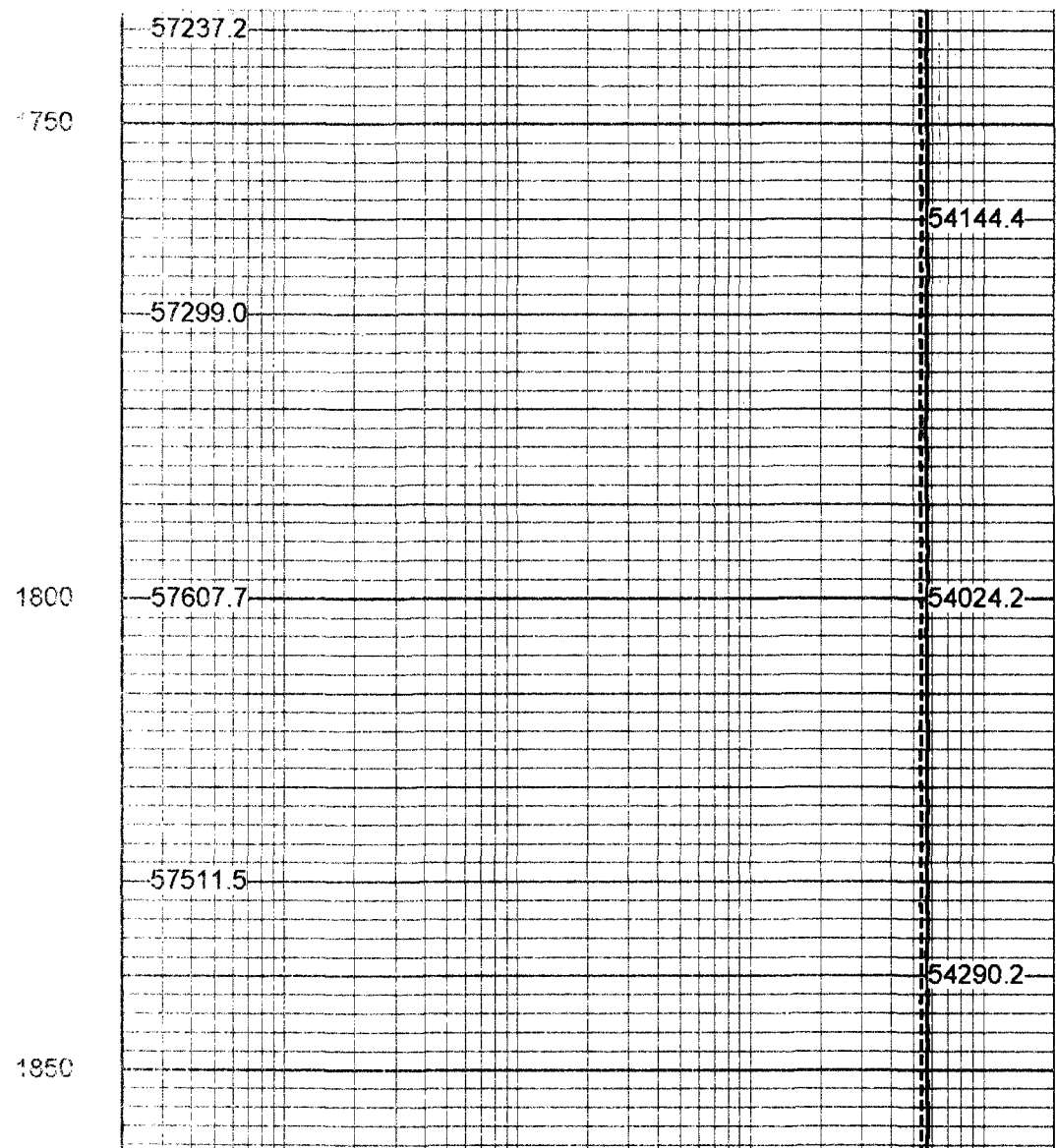
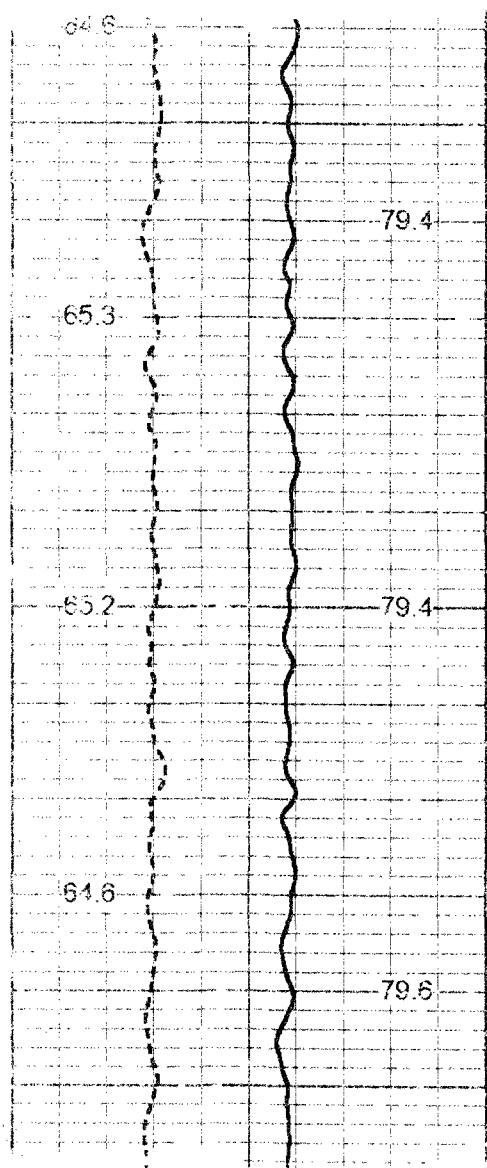
1600

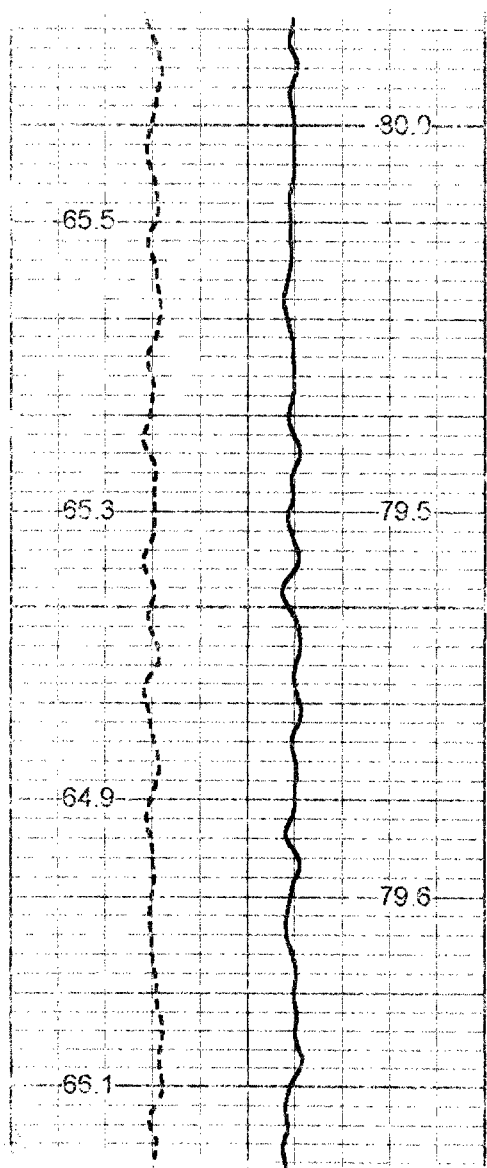


1650

1700



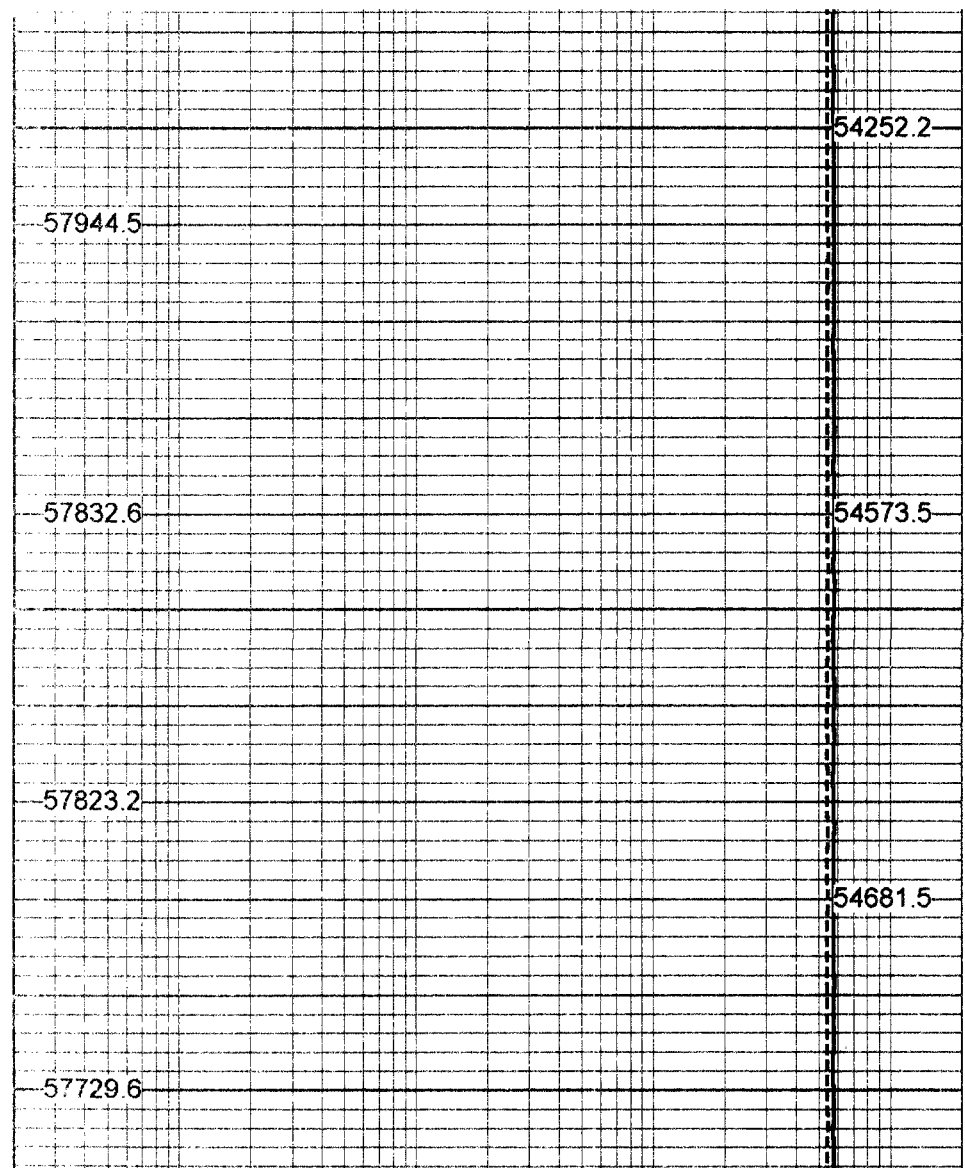




2000

2050

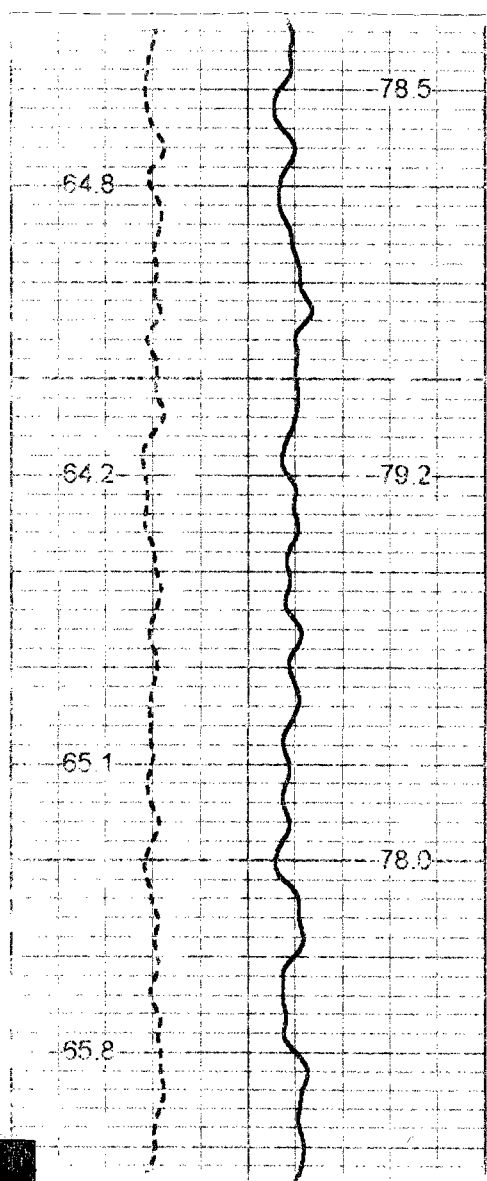
2100



54252.2

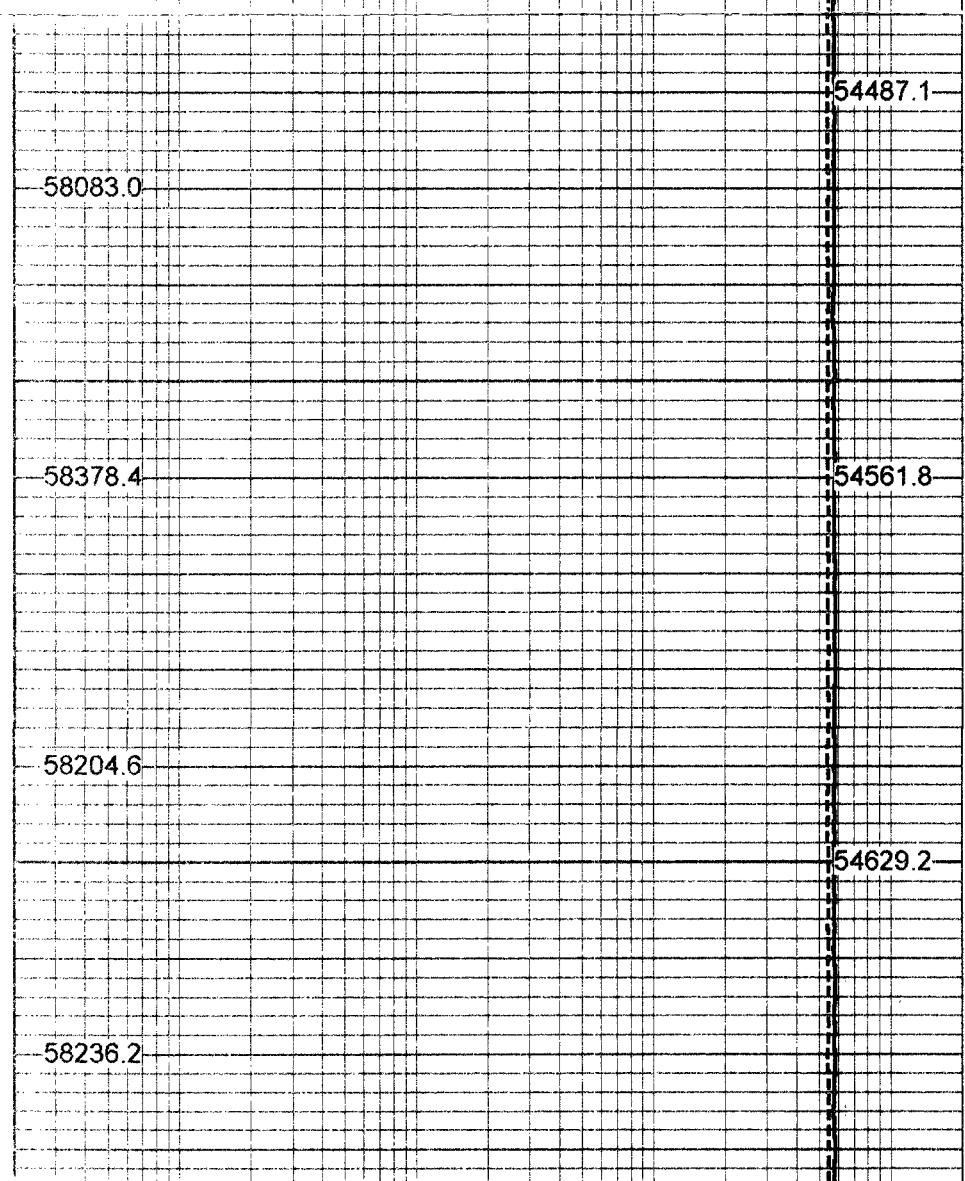
54573.5

54681.5



2150

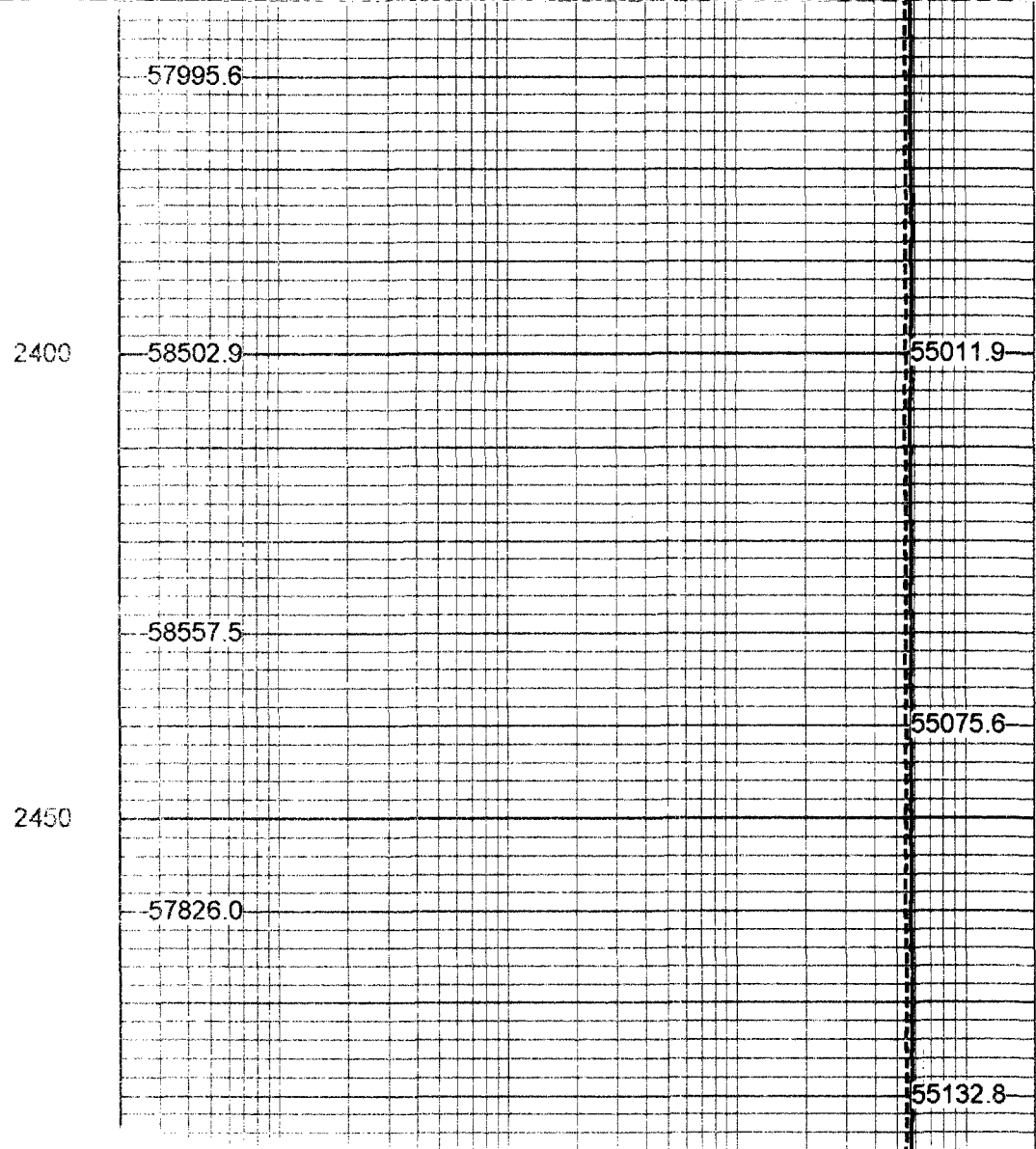
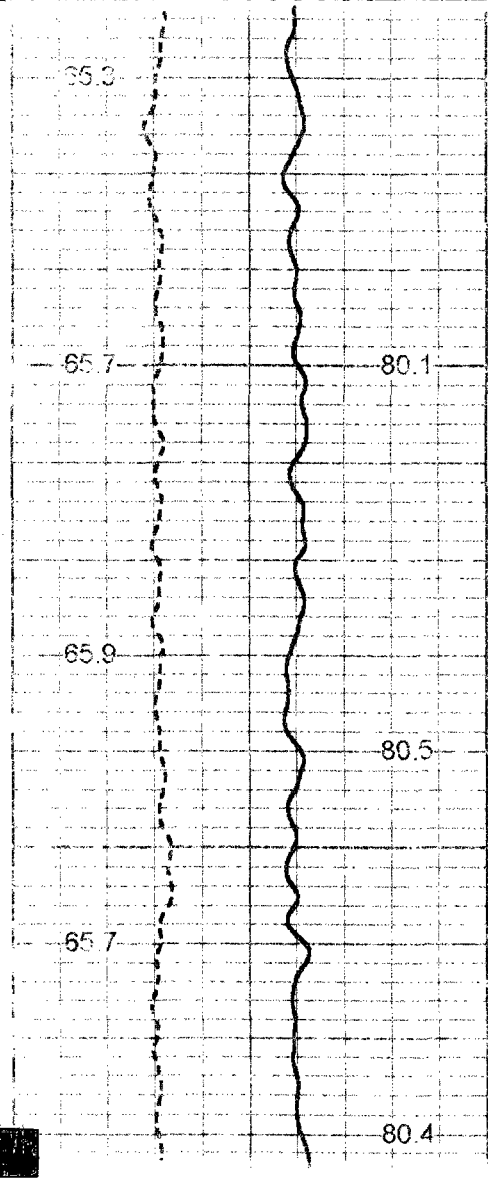
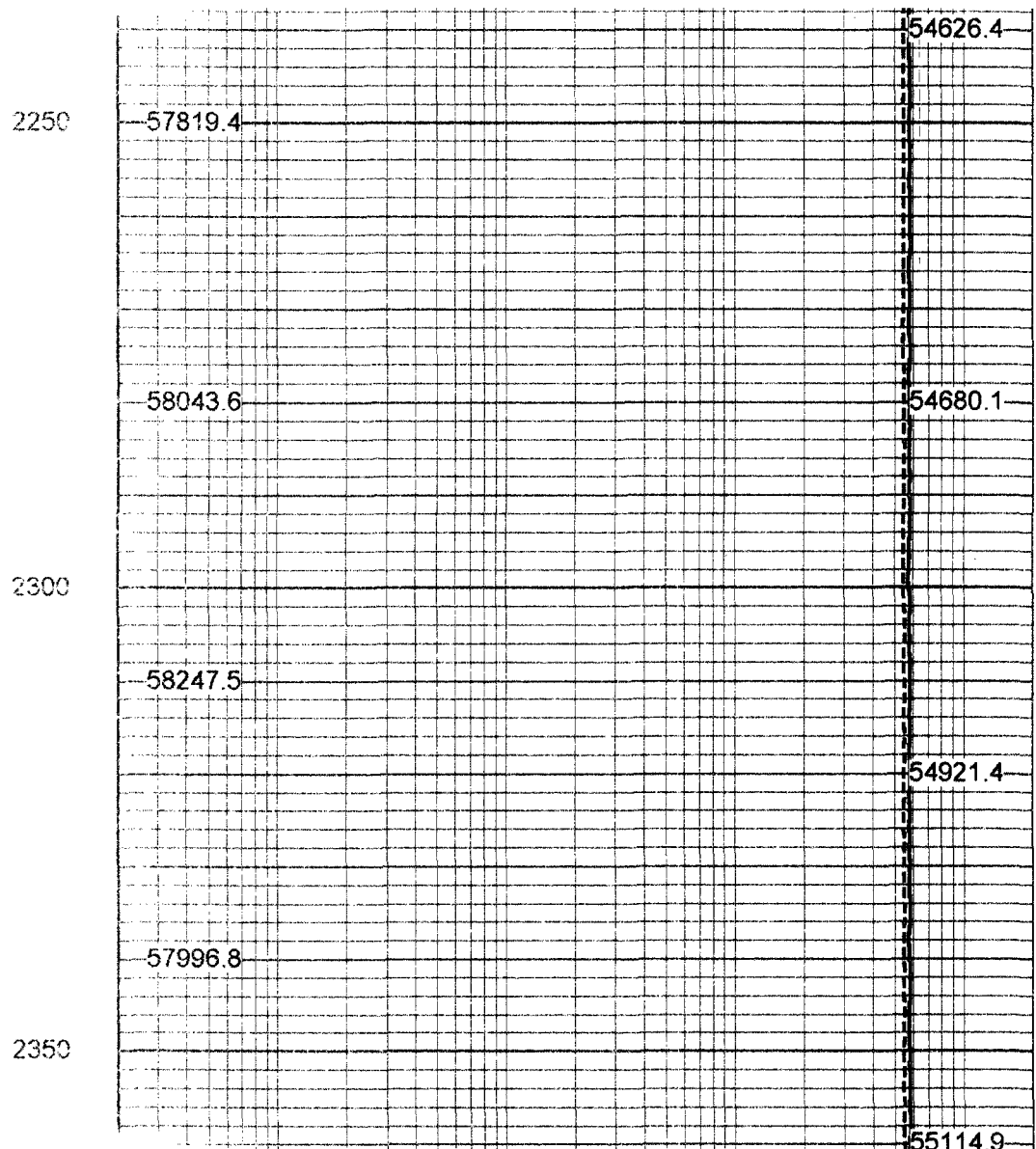
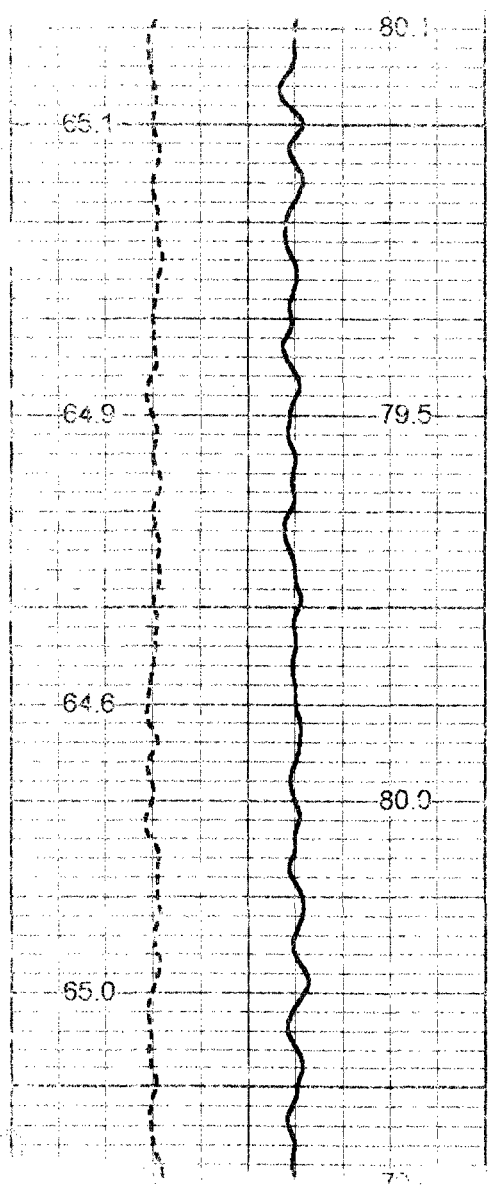
2200

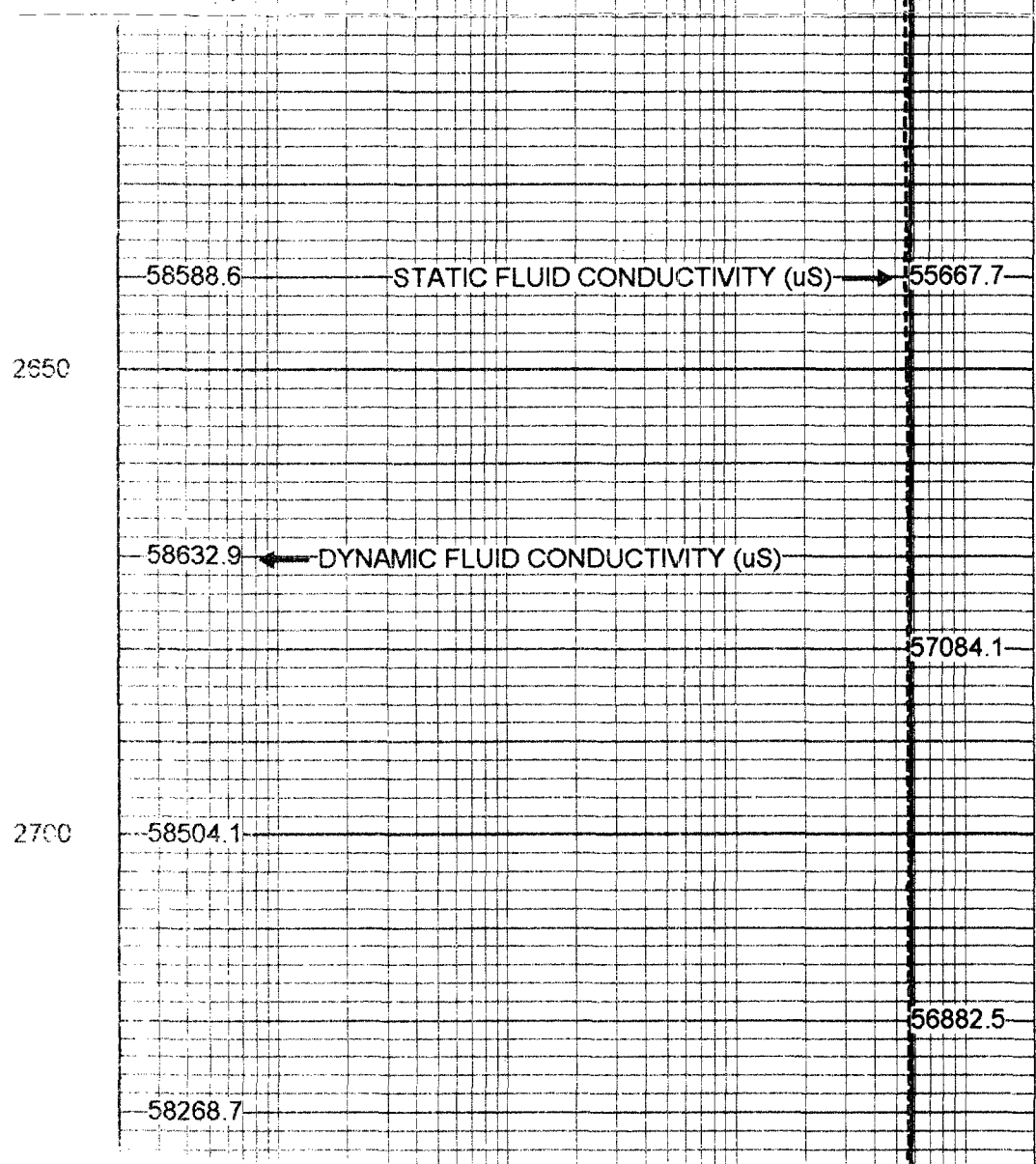
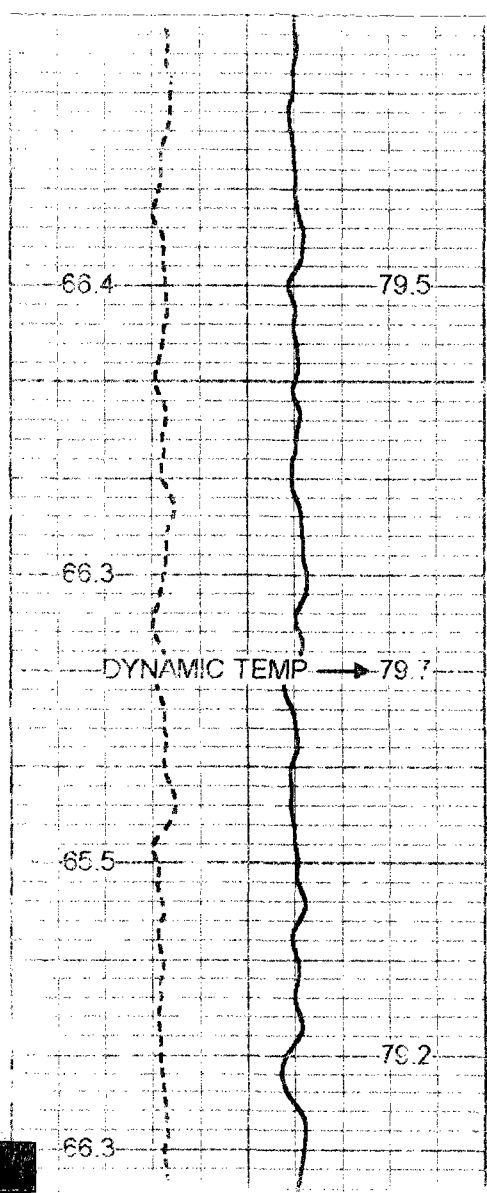
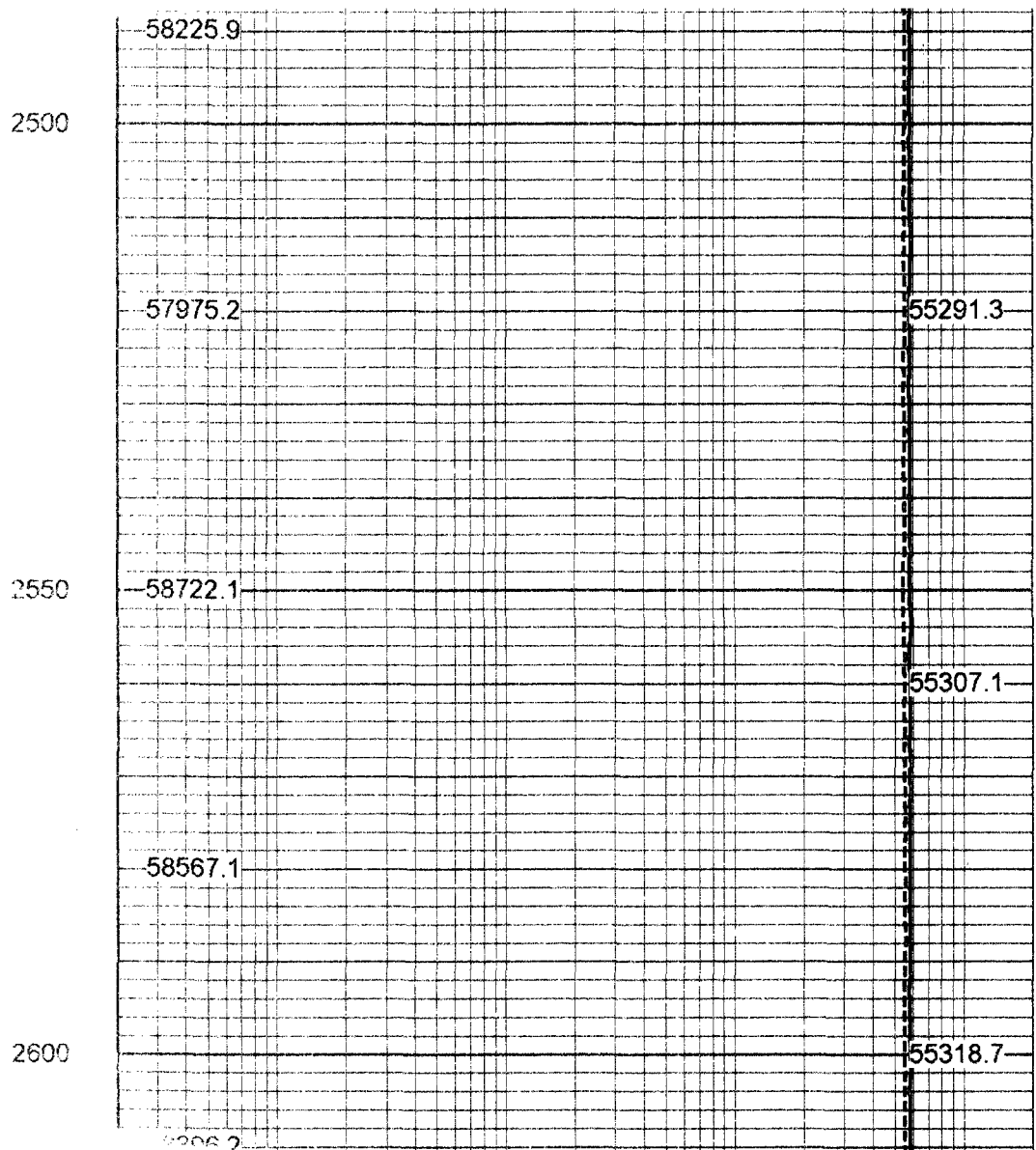
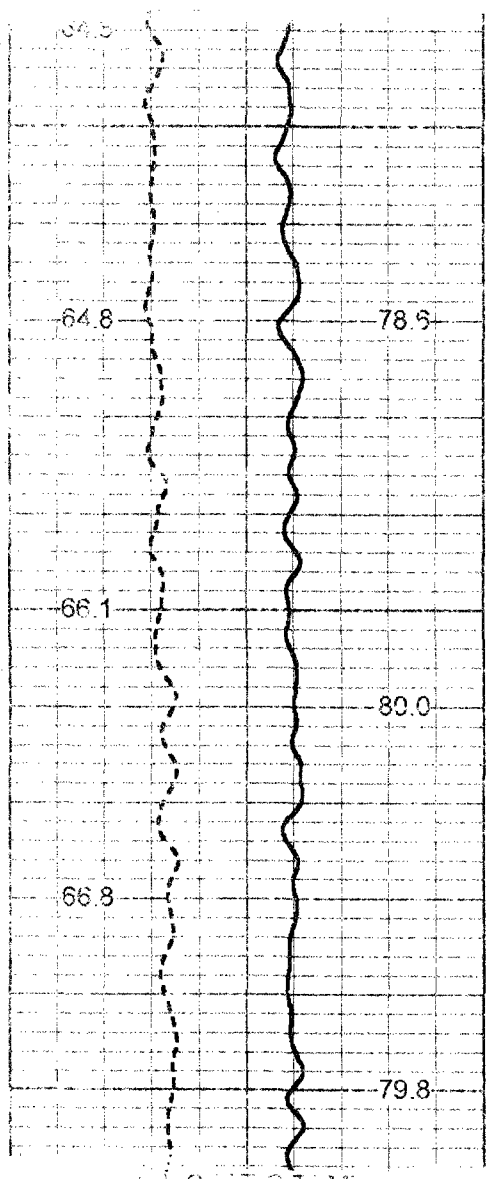


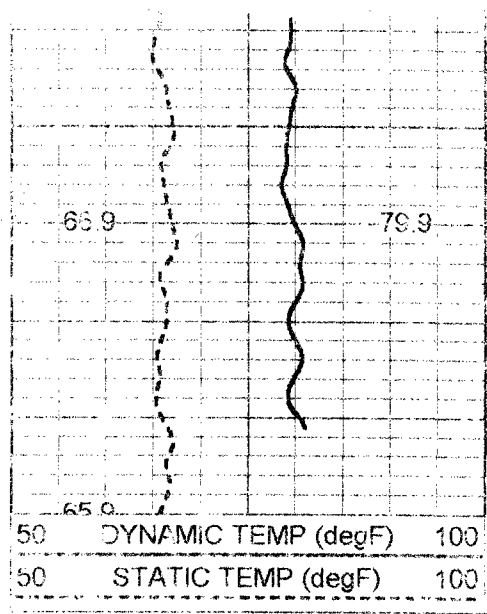
54487.1

54561.8

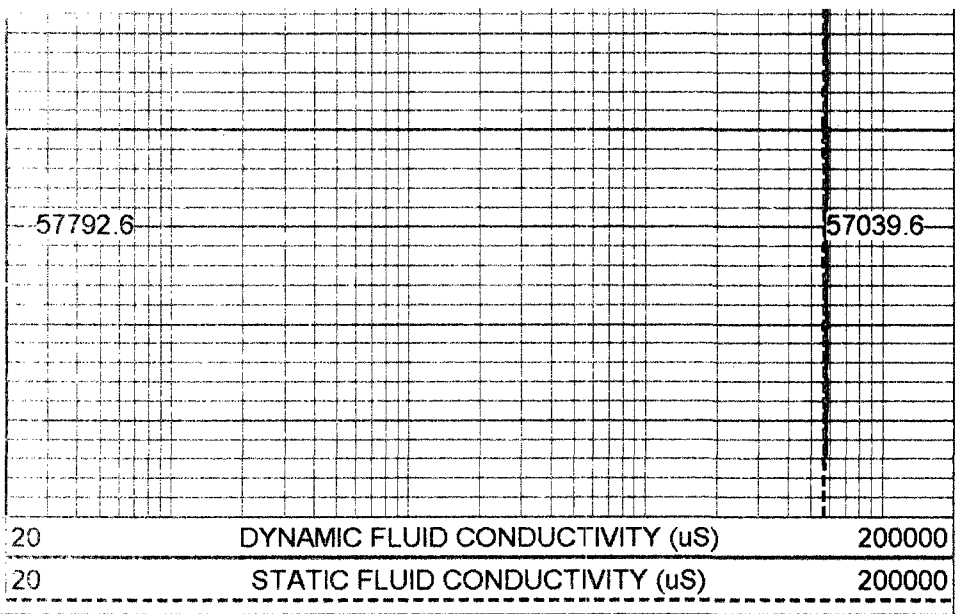
54629.2







2750



50 DYNAMIC TEMP (degF) 100
50 STATIC TEMP (degF) 100

20 DYNAMIC FLUID CONDUCTIVITY (uS) 200000
20 STATIC FLUID CONDUCTIVITY (uS) 200000

FRT Calibration Report

Serial Number: 31
Tool Model: SONDEX
Performed: Wed May 09 10:25:09 2001

Point #	Reading		Reference
1	0.000	cps	0.000
2	25.476	cps	500.000
3	31.707	cps	1000.000
4	205.970	cps	10000.000
5	1184.540	cps	50000.000
6		cps	

Calibration Report

Serial Number: 31
Tool Model: SONDEX
Performed: Wed May 09 10:25:03 2001

Point #	Reading		Reference	
1	0	cps	0	degF
2	120.679	cps	34	degF
3	582.95	cps	135	degF