



YOUNGQUIST BROTHERS, Inc
GEOPHYSICAL LOGGING DIVISION

FLUID CONDUCTIVITY TEMPERATURE LOG

Company **HAZEN & SAWYER**
Well **IW #1**
Field **S. CTY RGL WTP R/O EXP**
County **COLLIER**
State **FLORIDA**

Company **HAZEN & SAWYER**
Well **IW #1**
Field **S. CTY REGIONAL WTP R/O EXP**
County **COLLIER** State **FLORIDA**
Location **NW S35, T49S, R26E**
Permanent Datum **PAD** Elevation
Log Measured From **PAD**
Drilling Measured From **PAD**
Other Services **SEE COMMENTS**
Elevation **K.B. D.F. G.L. 10'NVGD**

Date	16-JAN-2002			
Run Number	SIX	From	To	
Depth Driller	3220'			
Bottom Logged Interval	3220'			
Top Log Interval	3220'			
Open Hole Size	12.25"			
Type Fluid	WATER			
Density / Viscosity	N/A			
Max. Recorded Temp	N/A			
Estimated Cement Top	N/A			
Time Well Ready	0000			
Time Logger on Bottom	0000			
Equipment Number	102 FTM			
Location	FT MYERS			
Recorded By	LEE			
Witnessed By	A TOBIAS			

Run Number	Borehole Record		Tubing Record	
	Bit	From	To	Size
ONE	48.50"	SURFACE	336'	
TWO	12.25"	CASING	1420'	
THREE	40.50"	CASING	1305'	
SIX	12.25"	CASING	3220'	

Casing Record	Surface String	Prot. String	Production String	Liner	Wgt/Ft	
					Top	Bottom
42"	34"				330'	1300'
					375 W.T.	375 W.T.

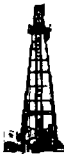
<<< Fold Here >>>

All interpretations are opinions based on inferences from electrical or other measurements and we cannot and do not guarantee the accuracy or correctness of any interpretation, and we shall not, except in the case of gross or willful negligence on our part, be liable or responsible for any loss, costs, damages, or expenses incurred or sustained by anyone resulting from any interpretation made by any of our officers, agents or employees. These interpretations are also subject to our general terms and conditions set out in our current Price Schedule.

Comments

X-Y CALIPER
GAMMA RAY
DIL/LL3/SP
BHC SONIC/VDL
FLOWMETER
DHTVS

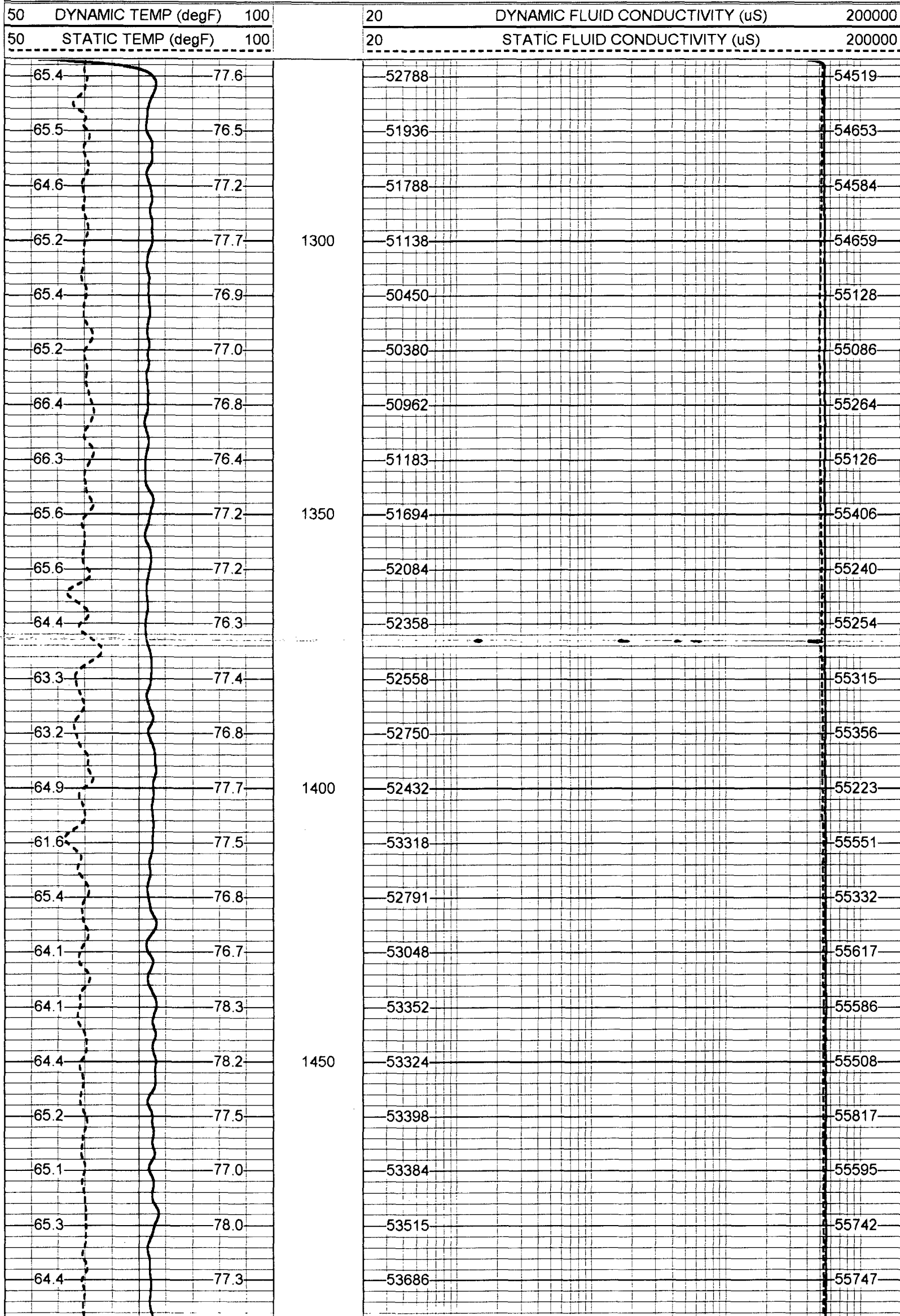
Entered into
OCULUS
South District

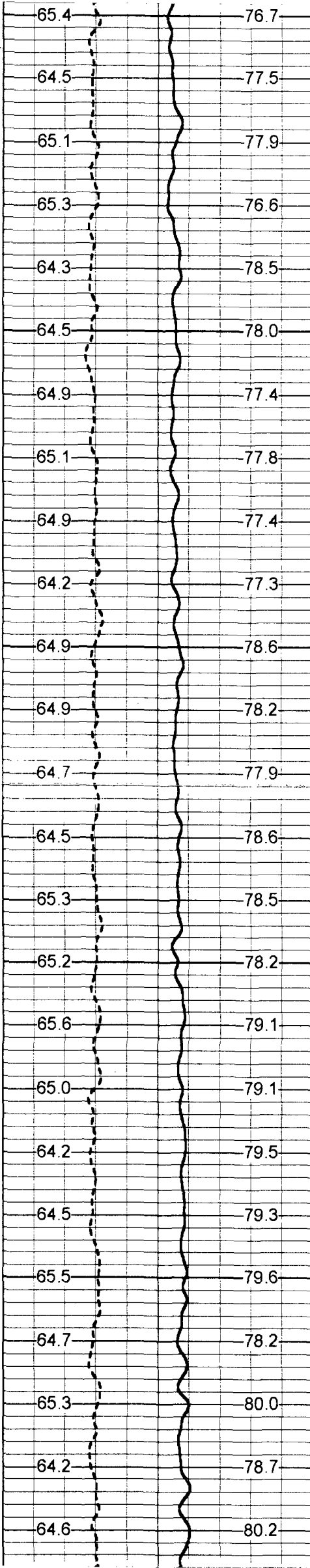


YOUNGQUIST BROTHERS, Inc
GEOPHYSICAL LOGGING DIVISION

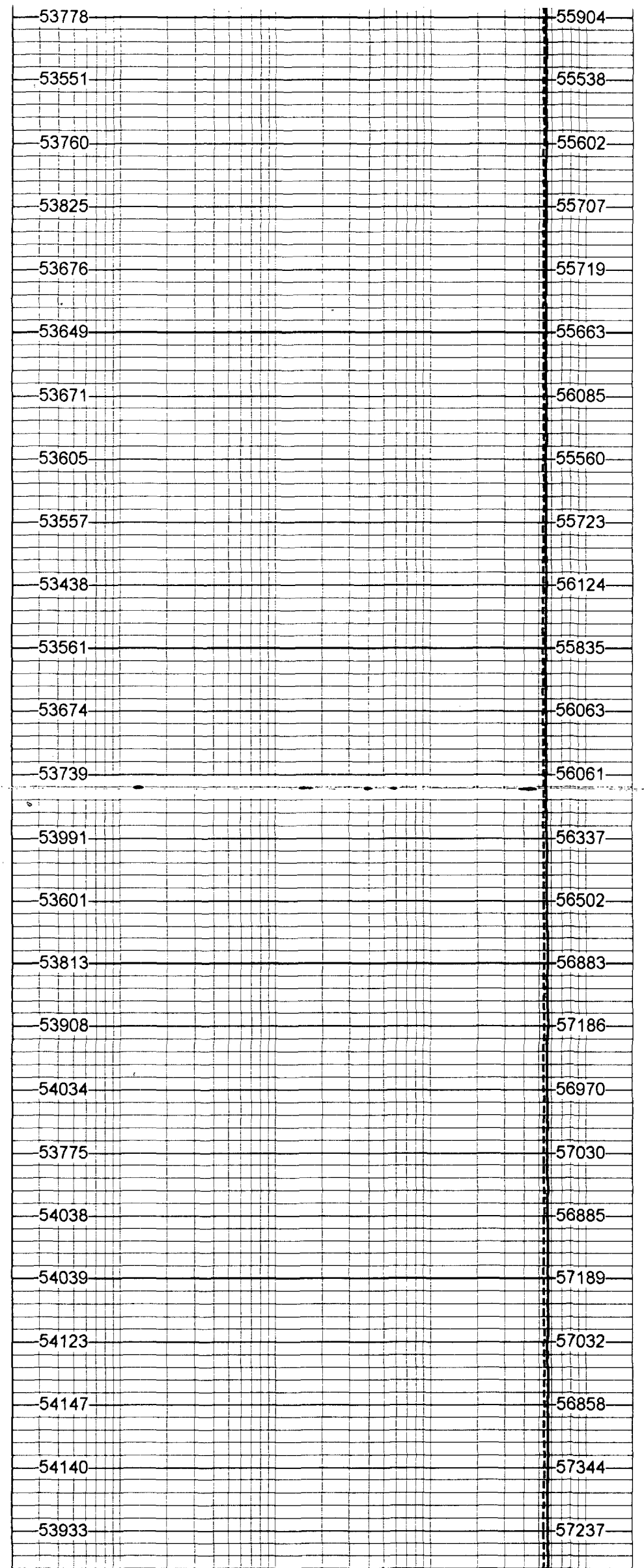
430 GPM

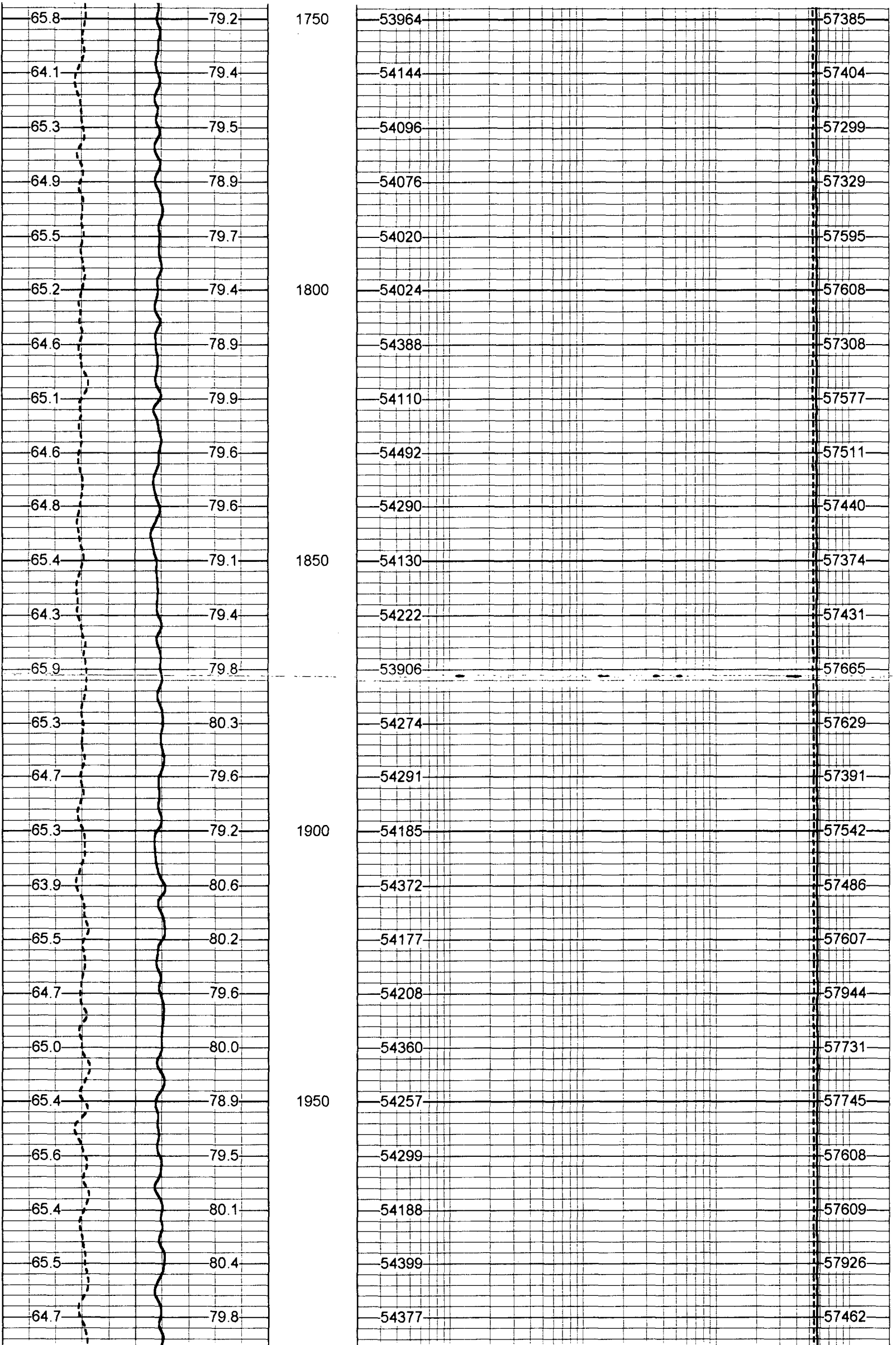
Database File: scriw1.db
Dataset Pathname: run6/FRTDYN
Presentation Format: frt ma.ors

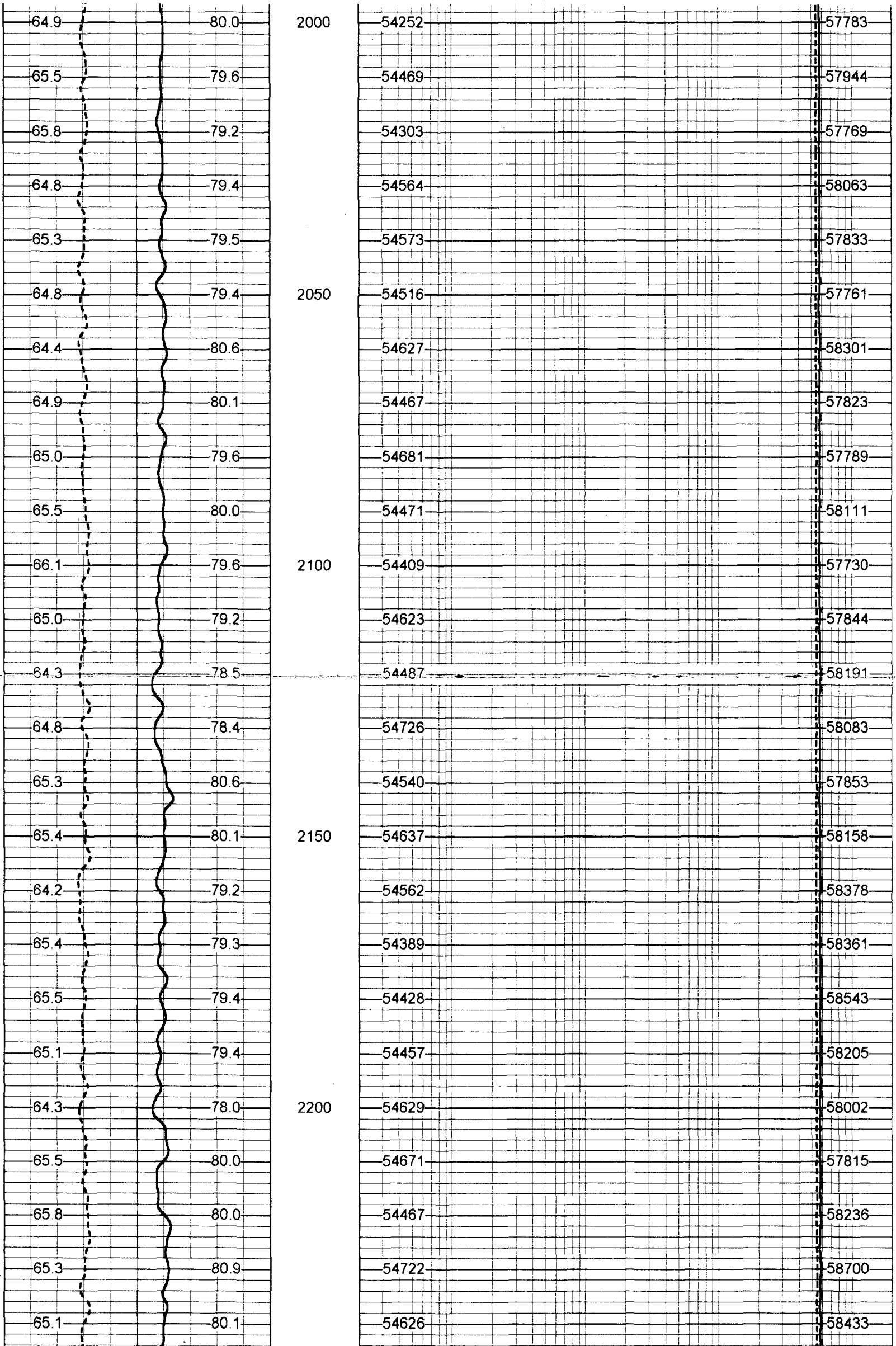


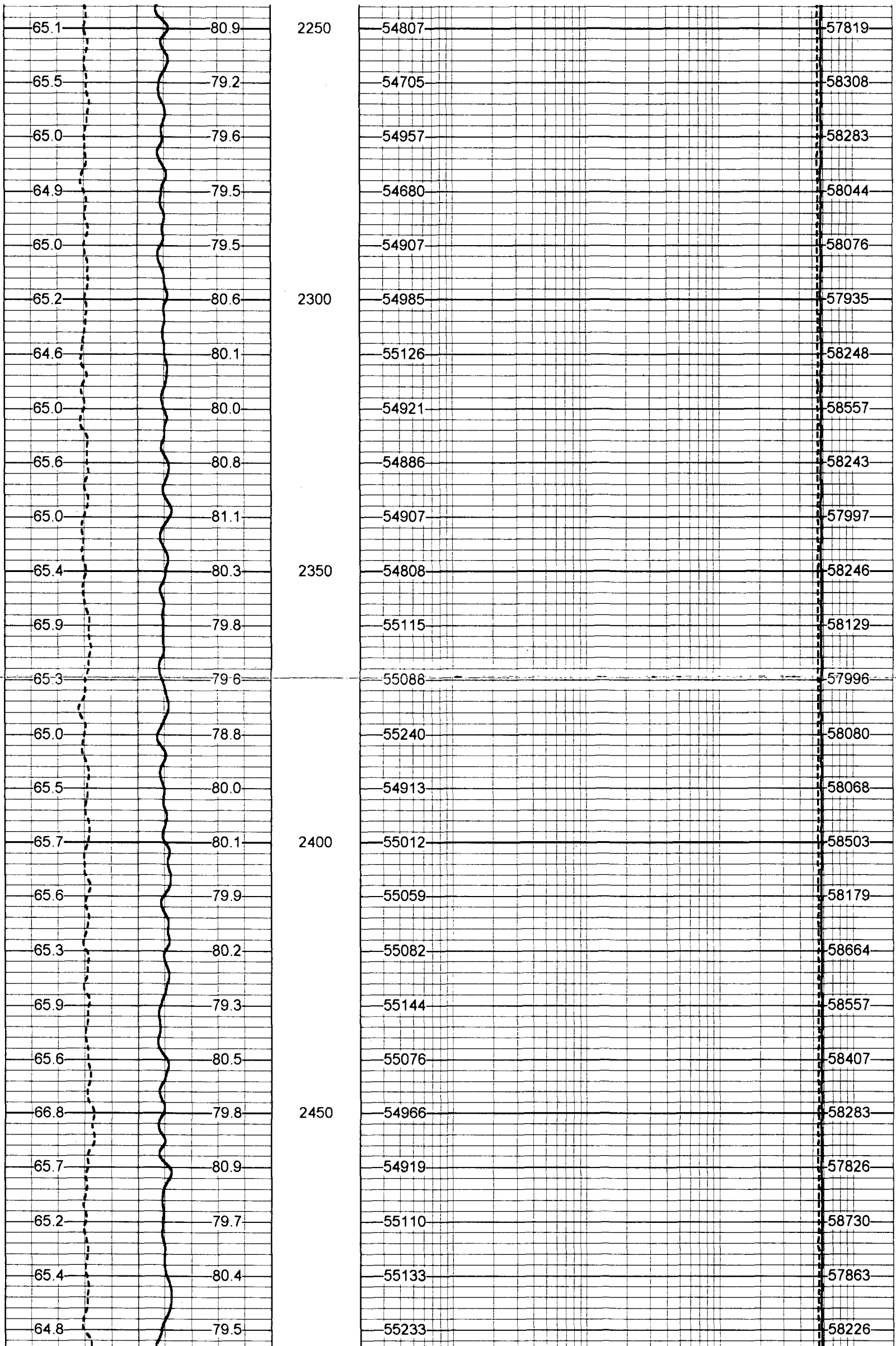


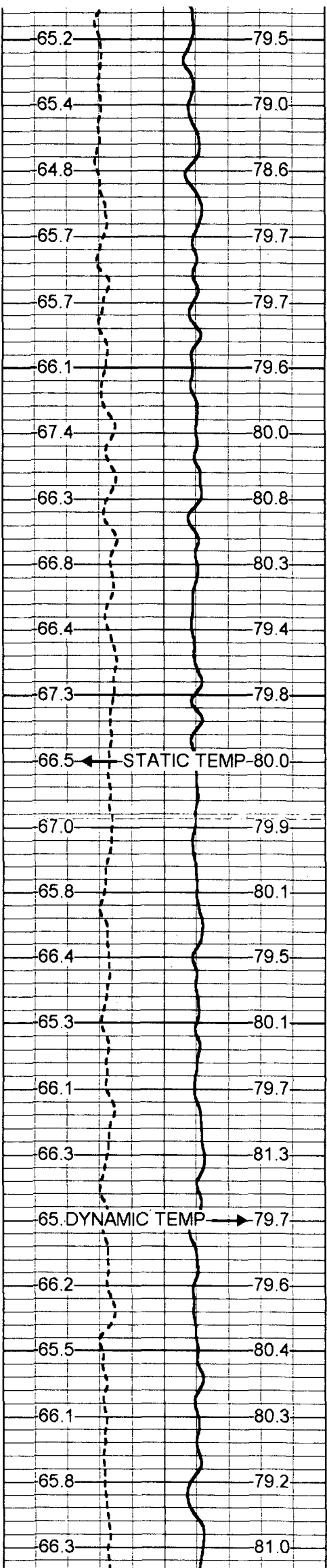
1500
1550
1600
1650
1700



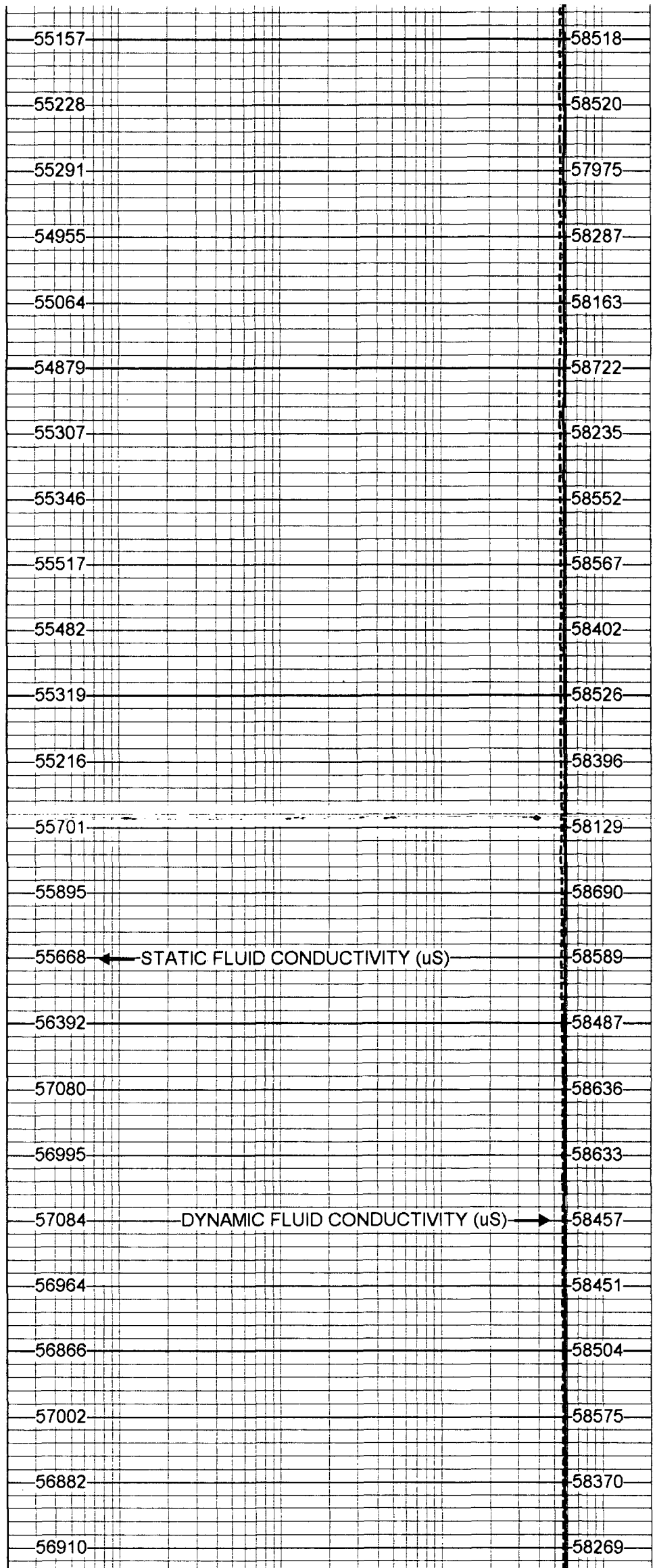








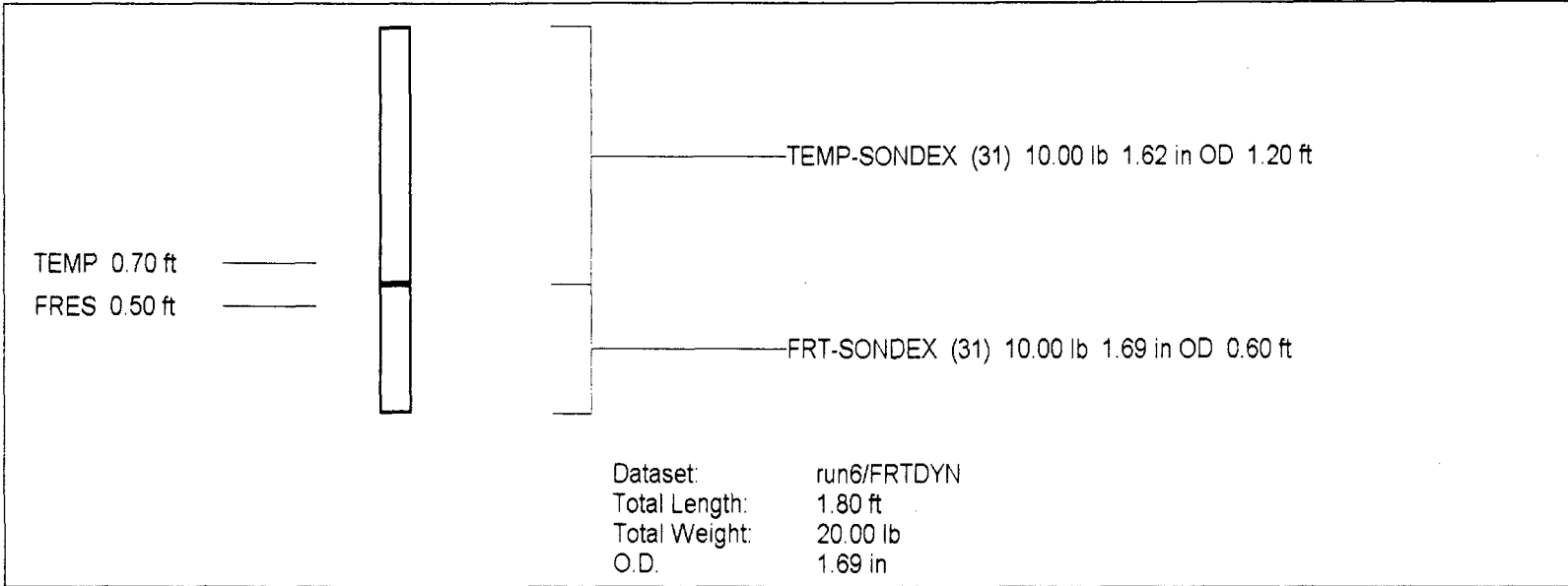
2500
2550
2600
2650
2700



← STATIC FLUID CONDUCTIVITY (uS)
DYNAMIC FLUID CONDUCTIVITY (uS) →

50 DYNAMIC TEMP (degF) 100
50 STATIC TEMP (degF) 100

20 DYNAMIC FLUID CONDUCTIVITY (uS) 20000
20 STATIC FLUID CONDUCTIVITY (uS) 20000



FRT Calibration Report

Serial Number: 31
 Tool Model: SONDEX
 Performed: Wed May 09 10:25:09 2001

Point #	Reading		Reference
1	0.000	cps	0.000
2	25.476	cps	500.000
3	31.707	cps	1000.000
4	205.970	cps	10000.000
5	1184.540	cps	50000.000
6		cps	

Temperature Calibration Report

Serial Number: 31
 Tool Model: SONDEX
 Performed: Wed May 09 10:25:03 2001

Point #	Reading		Reference	
1	0	cps	0	degF
2	120.679	cps	34	degF
3	582.95	cps	135	degF