



# FLUID CONDUCTIVITY TEMPERATURE LOG

Company CH2M HILL  
 Well DUAL ZONE MONITOR WELL  
 Field GASPARILLA ISLD. WATER ASSOC.  
 County CHARLOTTE State FLORIDA

Company CH2M HILL  
 Well DZ MW  
 Field GASPARILLA I.W.A.  
 County CHARLOTTE  
 State FLORIDA

Location	Permanent Datum	Log Measured From	Drilling Measured From	GROUND LEVEL	Elevation	Other Services SEE COMMENTS
				GROUND LEVEL		K.B. D.F. G.L.
				GROUND LEVEL		
				GROUND LEVEL		

Date	AUGUST 13, 2001	
Run Number	ONE	
Depth Driller	650'	
Depth Logger	651'	
Bottom Logged Interval	651'	
Top Log Interval	CASING	
Open Hole Size	7.875"	
Type Fluid	WATER	
Density / Viscosity	N/A	
Max. Recorded Temp.	86 DEG F	
Estimated Cement Top	N/A	
Time Well Ready	ON ARRIVAL	
Time Logger on Bottom	0830	
Equipment Number	103	
Location	FT. MYERS	
Recorded By	DENISON	
Witnessed By	R. DEAN	

Borehole Record		Tubing Record					
Run Number	Bit	From	To	Size	Weight	From	To
ONE	7.875"	417'	651'				

Casing Record		Size		Wgt/Ft		Top		Bottom	
Surface String	8"					SURFACE		200'	
Prod. String									
Production String									
Liner									

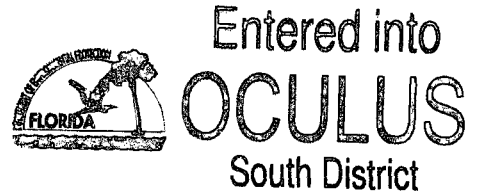
<<< Fold Here >>>

All interpretations are opinions based on inferences from electrical or other measurements and we cannot and do not guarantee the accuracy or correctness of any interpretation, and we shall not, except in the case of gross or willful negligence on our part, be liable or responsible for any loss, costs, damages, or expenses incurred or sustained by anyone resulting from any interpretation made by any of our officers, agents or employees. These interpretations are also subject to our general terms and conditions set out in our current Price Schedule.

### Comments

DYNAMIC FLOWRATE = 225 GPM

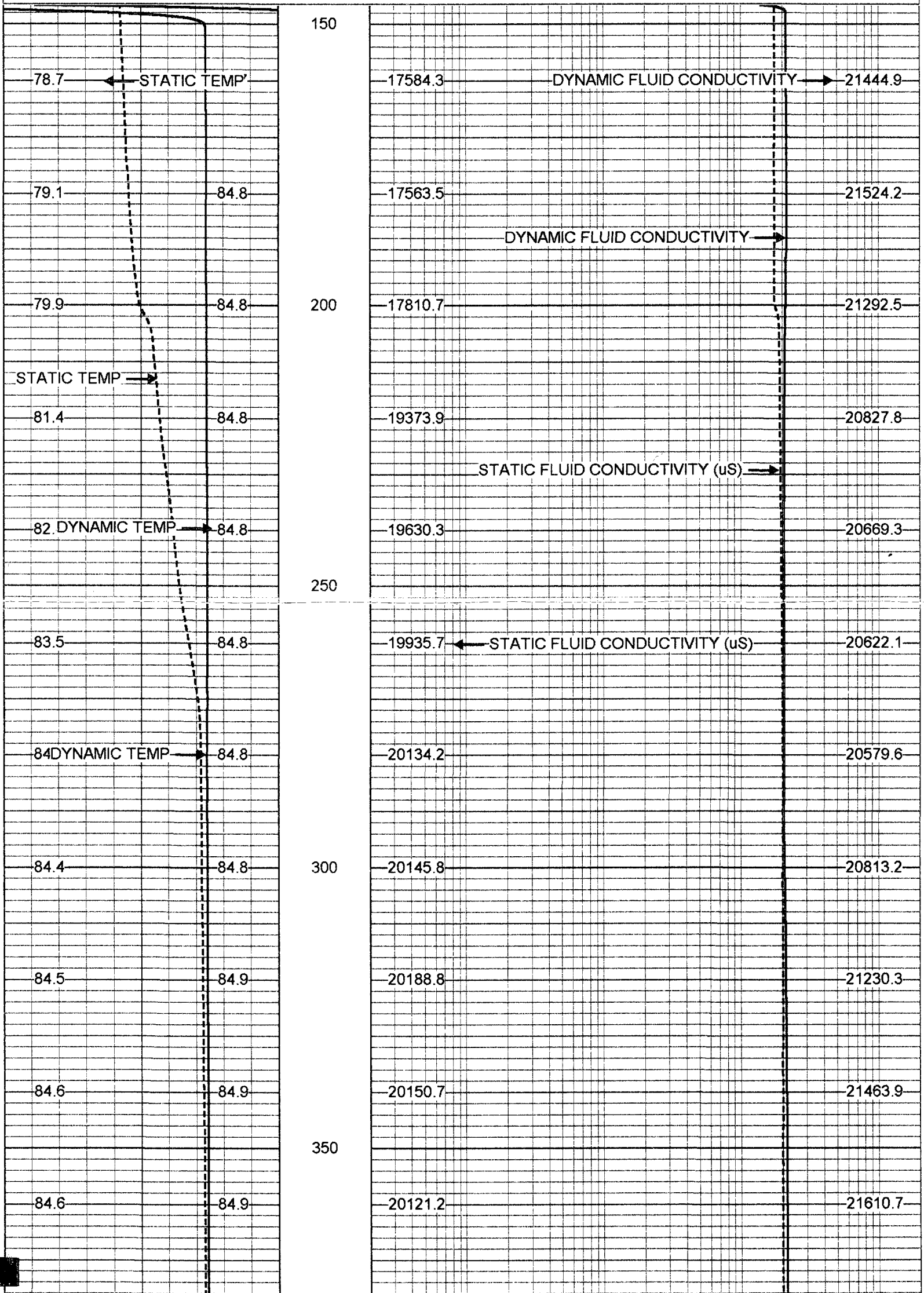
OTHER SERVICES:  
 X-Y CALIPER/GAMMA RAY  
 FLOWMETER  
 DUAL INDUCTION/LL3/SP

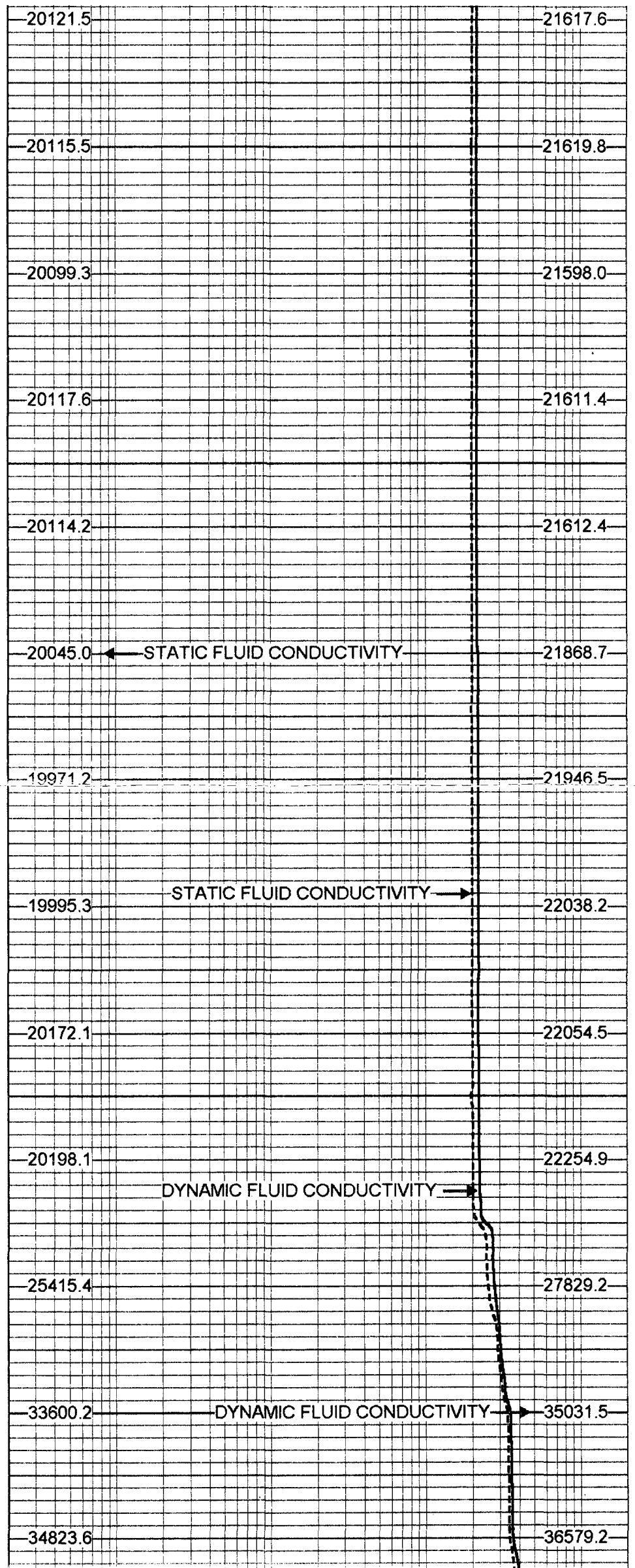
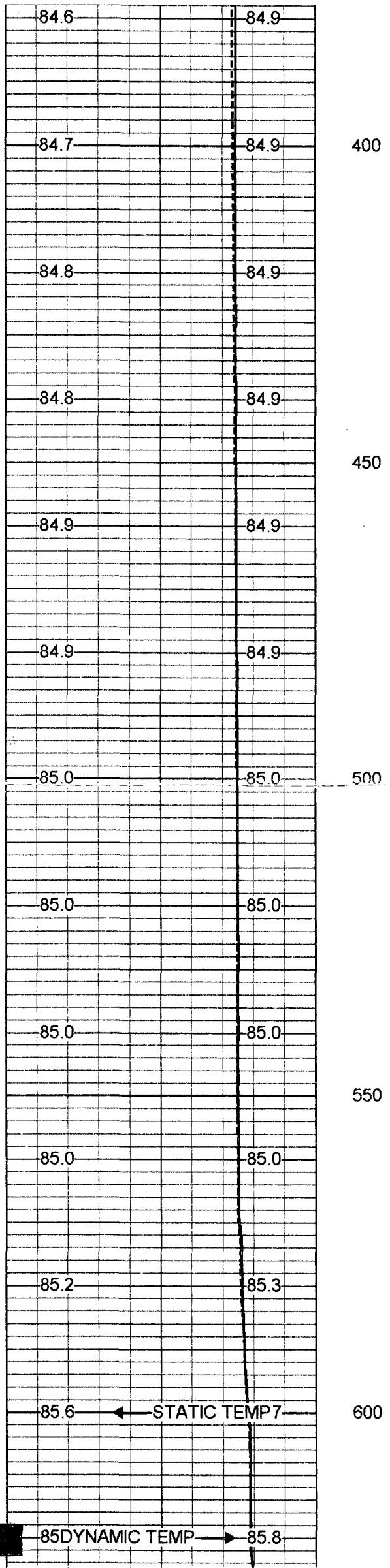


# FLORIDA GEOPHYSICAL LOGGING, INC. MERGED FLUID COND/TEMP

Database File: gaspdzmw.db  
 Dataset Pathname: pass15  
 Presentation Format: frt\_mg.prs

70	DYNAMIC TEMP (degF)	90	20	DYNAMIC FLUID CONDUCTIVITY (uS)	200000
70	STATIC TEMP (degF)	90	20	STATIC FLUID CONDUCTIVITY (uS)	200000

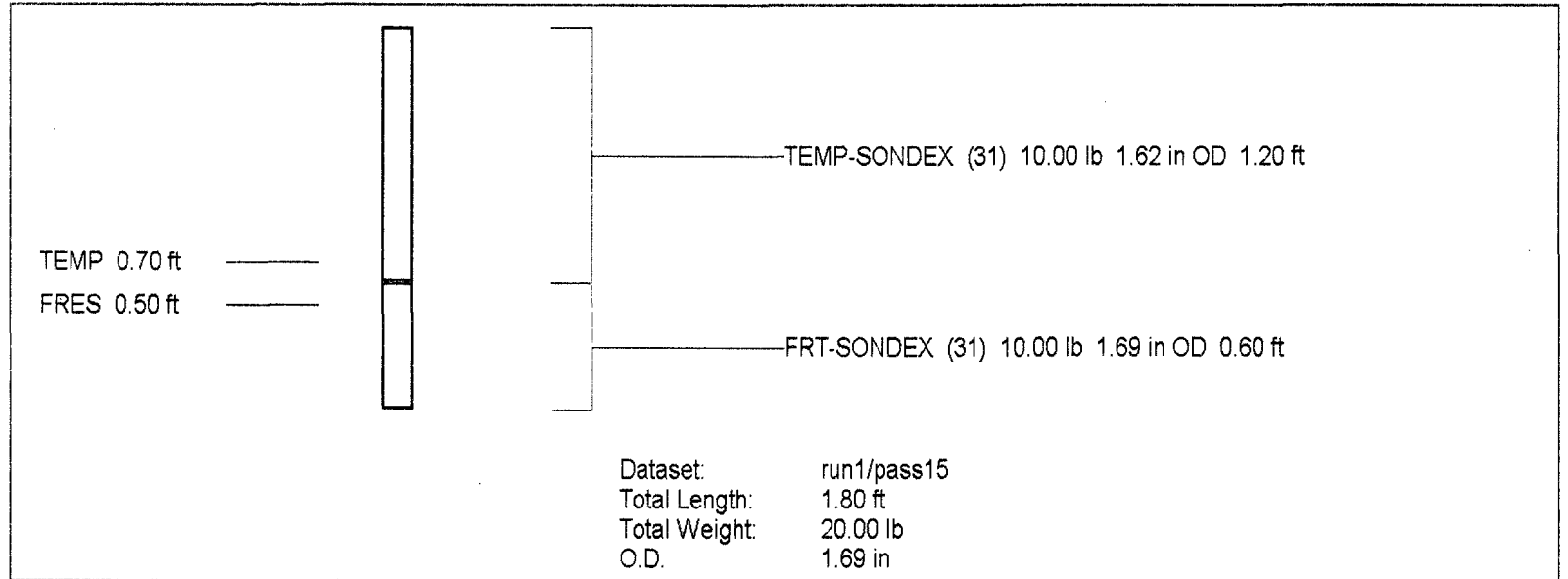




86.1	86.1	
70	DYNAMIC TEMP (degF)	90
70	STATIC TEMP (degF)	90

650

39749.2	41730.5	
20	DYNAMIC FLUID CONDUCTIVITY (uS)	200000
20	STATIC FLUID CONDUCTIVITY (uS)	200000



FRT Calibration Report			
Serial Number:		31	
Tool Model:		SONDEX	
Performed:		Mon May 07 10:39:40 2001	
Point #	Reading		Reference
1	33.812	cps	1000.000
2	186.494	cps	10000.000
3	963.690	cps	50000.000
4		cps	
5		cps	
6		cps	

Temperature Calibration Report				
Serial Number:		31		
Tool Model:		SONDEX		
Performed:		Mon May 07 15:54:58 2001		
Point #	Reading		Reference	
1	120.679	cps	34	degF
2	582.95	cps	135	degF
3		cps		degF