



# FLUID CONDUCTIVITY TEMPERATURE LOG

*REVIEWED*  
*MAY 9 9 25 AM*

Company **CH2M HILL**  
Well **DIW #1**  
Field **GASPARILLA ISLAND WATER ASSOC.**  
County **CHARLOTTE** State **FLORIDA**

Company **CH2M HILL**  
Well **DIW #1**  
Field **GASPARILLA I.W.A**  
County **CHARLOTTE**  
State **FLORIDA**

Location	Permanent Datum	Elevation	Other Services
	Log Measured From	GROUND LEVEL	SEE COMMENTS
	Drilling Measured From	GROUND LEVEL	
		K.B. -8	
		D.F.	
		G.L.	

Date	APRIL 27, 2001
Run Number	FIVE
Depth Driller	1700'
Depth Logger	1700'
Bottom Logged Interval	1700'
Top Log Interval	CASING
Open Hole Size	12.25"
Type Fluid	WATER
Density / Viscosity	N/A
Max. Recorded Temp.	92.6 DEG F
Estimated Cement Top	N/A
Time Well Ready	ON ARRIVAL
Time Logger on Bottom	0700
Equipment Number	103
Location	FT. MYERS
Recorded By	DENISON
Witnessed By	R. DEAN

Borehole Record		Tubing Record	
Run Number	Bit Size	From	To
ONE	12.25" SURFACE	375'	
THREE	12.25" CASING	1000'	
FOUR	28.5" CASING	655'	
FIVE	12.25" CASING	1700'	
Casing Record	Size	Wd/Ft	Bottom
Surface String	30"	375	375'
Prot. String	22"	375	
Production String			
Liner			

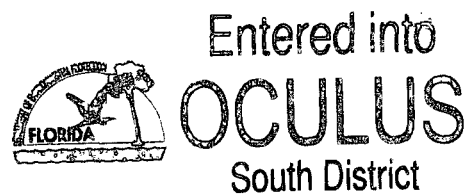
<<< Fold Here >>>

All interpretations are opinions based on inferences from electrical or other measurements and we cannot and do not guarantee the accuracy or correctness of any interpretation, and we shall not, except in the case of gross or willful negligence on our part, be liable or responsible for any loss, costs, damages, or expenses incurred or sustained by anyone resulting from any interpretation made by any of our officers, agents or employees. These interpretations are also subject to our general terms and conditions set out in our current Price Schedule.

### Comments

DYNAMIC FLOWRATE = 400 GPM

OTHER SERVICES:  
X-Y CALIPER/GR  
DUAL INDUCTION LL3/SP  
BOREHOLE COMPENSATED SONIC  
FLOWMETER  
VIDEO



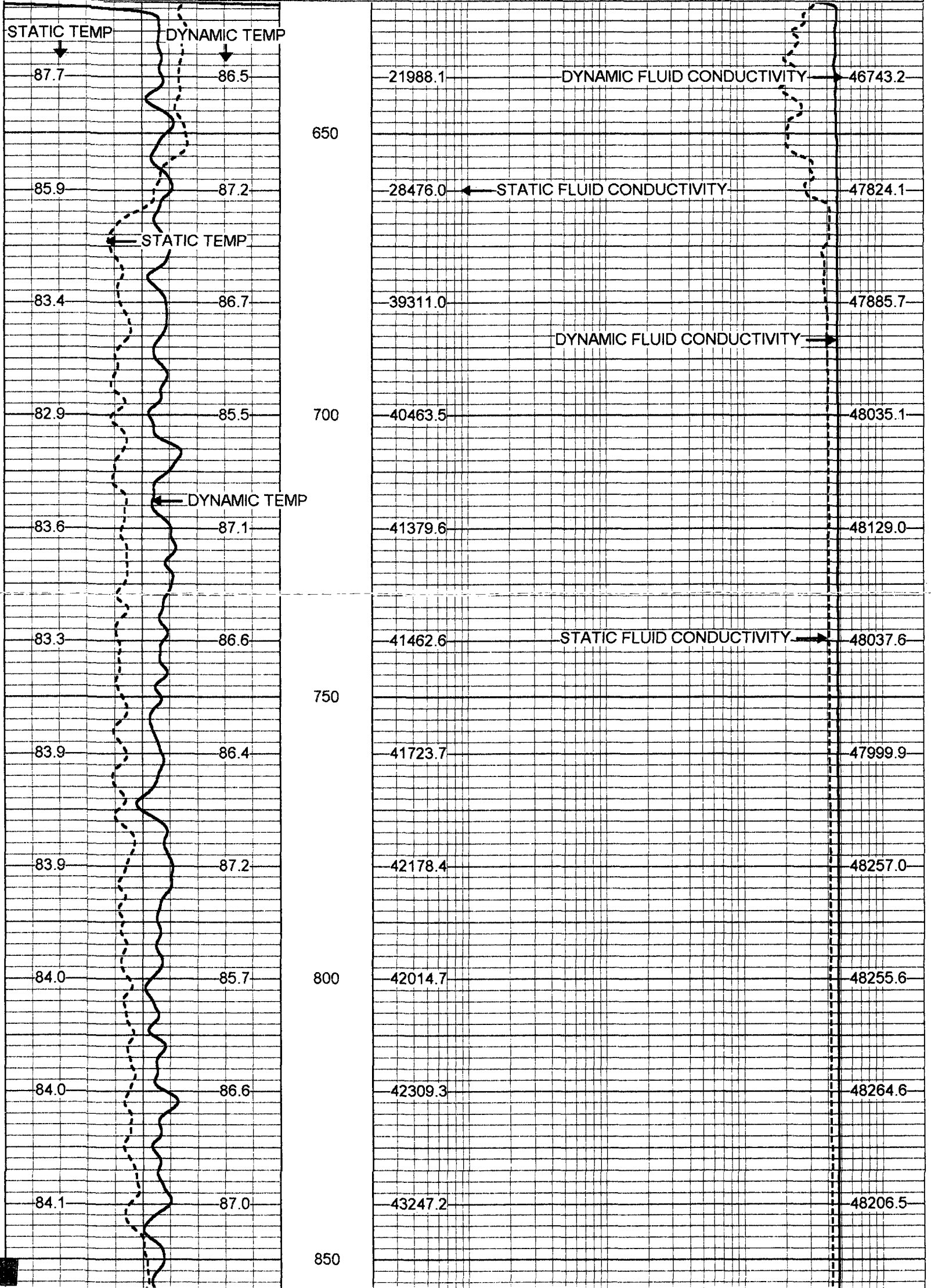
**FLORIDA**  
GEOPHYSICAL LOGGING, INC.

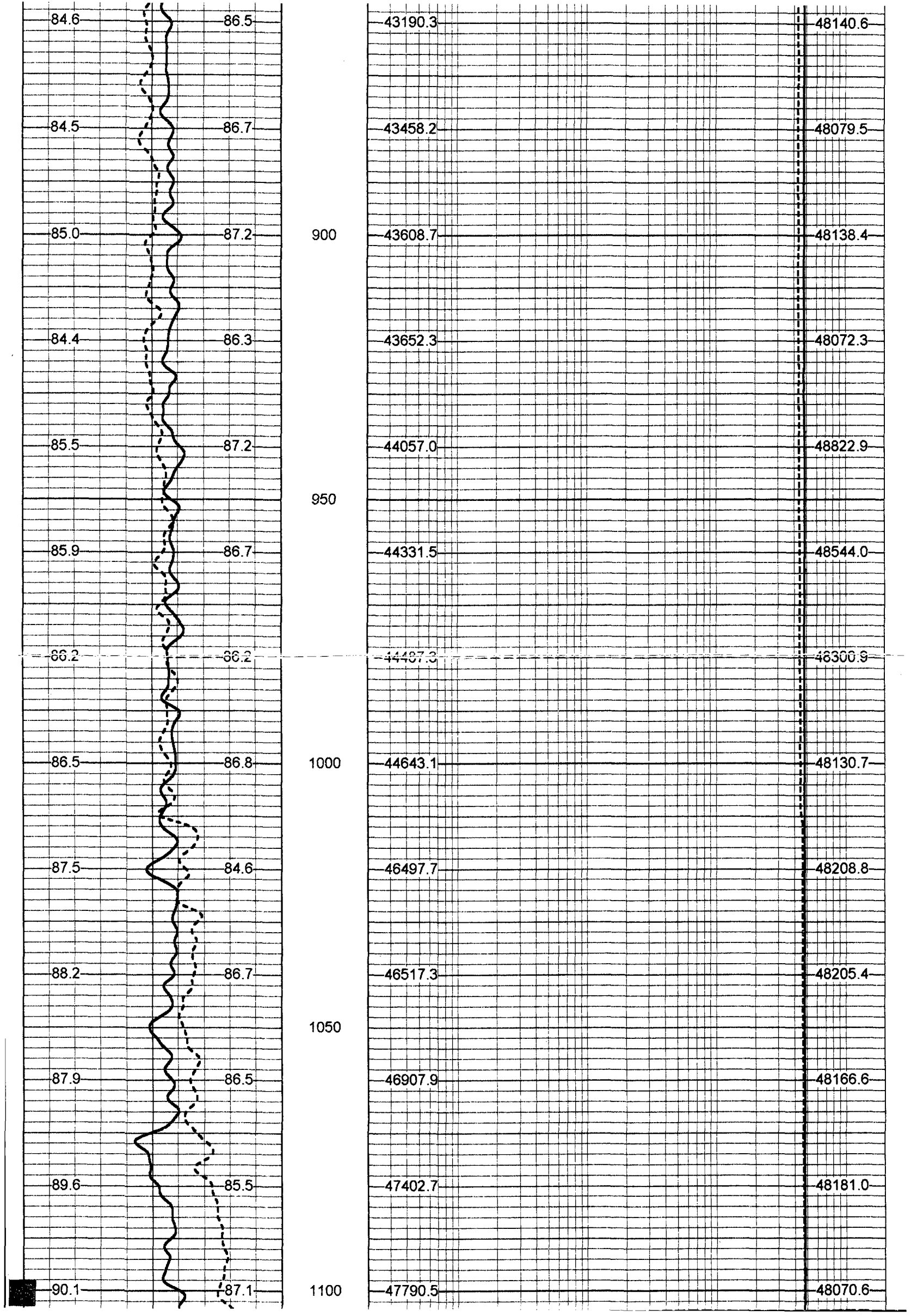
# MERGED CONDUCT/TEMP

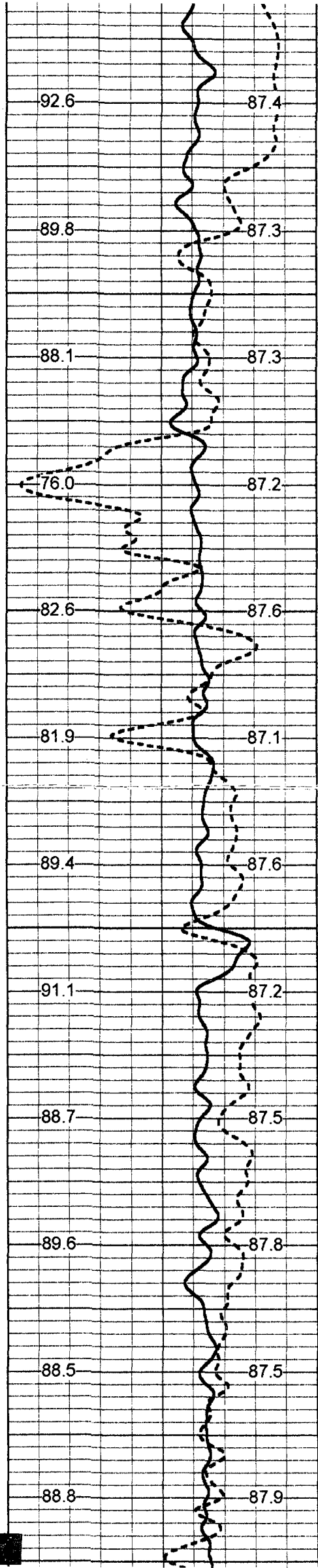
Database File: gasp.db  
Dataset Pathname: run5/pass21  
Presentation Format: prt mg nrs

75 DYNAMIC TEMP (degF) 95  
 75 STATIC TEMP (degF) 95

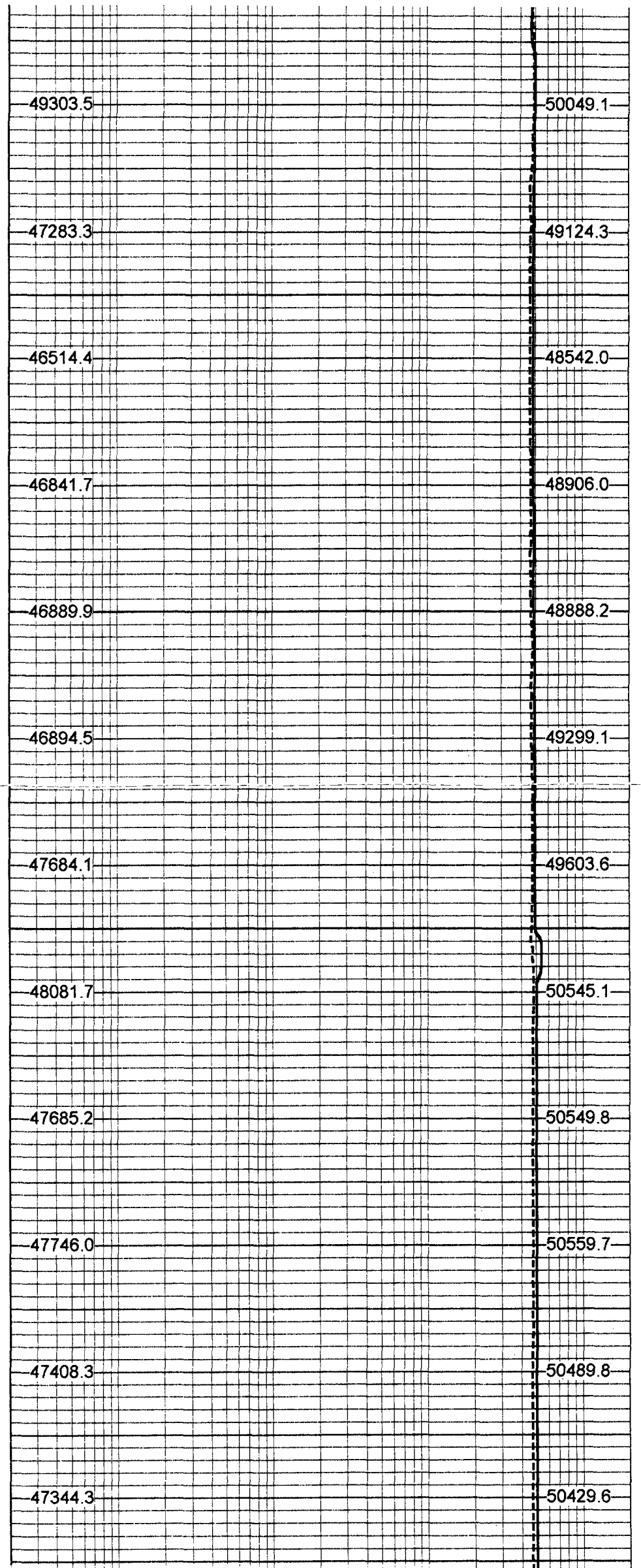
20 DYNAMIC FLUID CONDUCTIVITY (uS) 200000  
 20 STATIC FLUID CONDUCTIVITY (uS) 200000

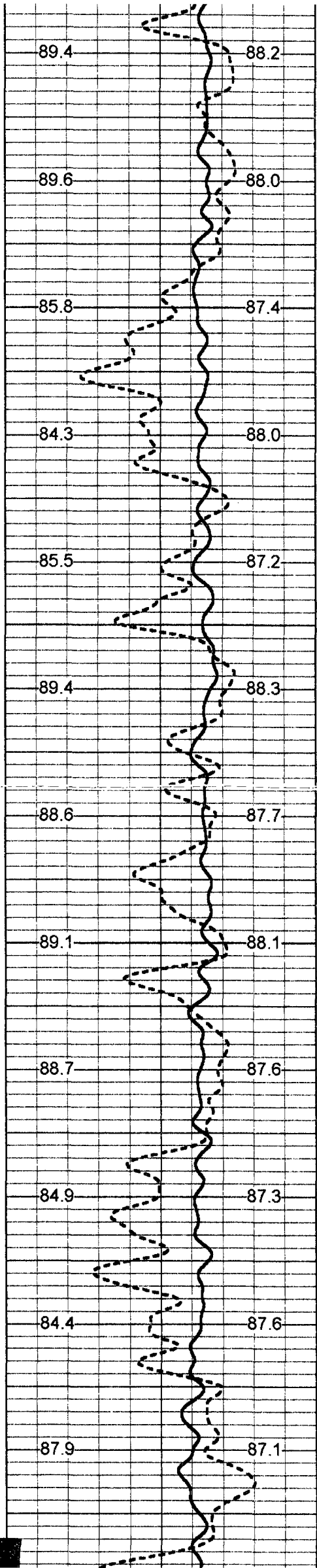






1150  
1200  
1250  
1300  
1350



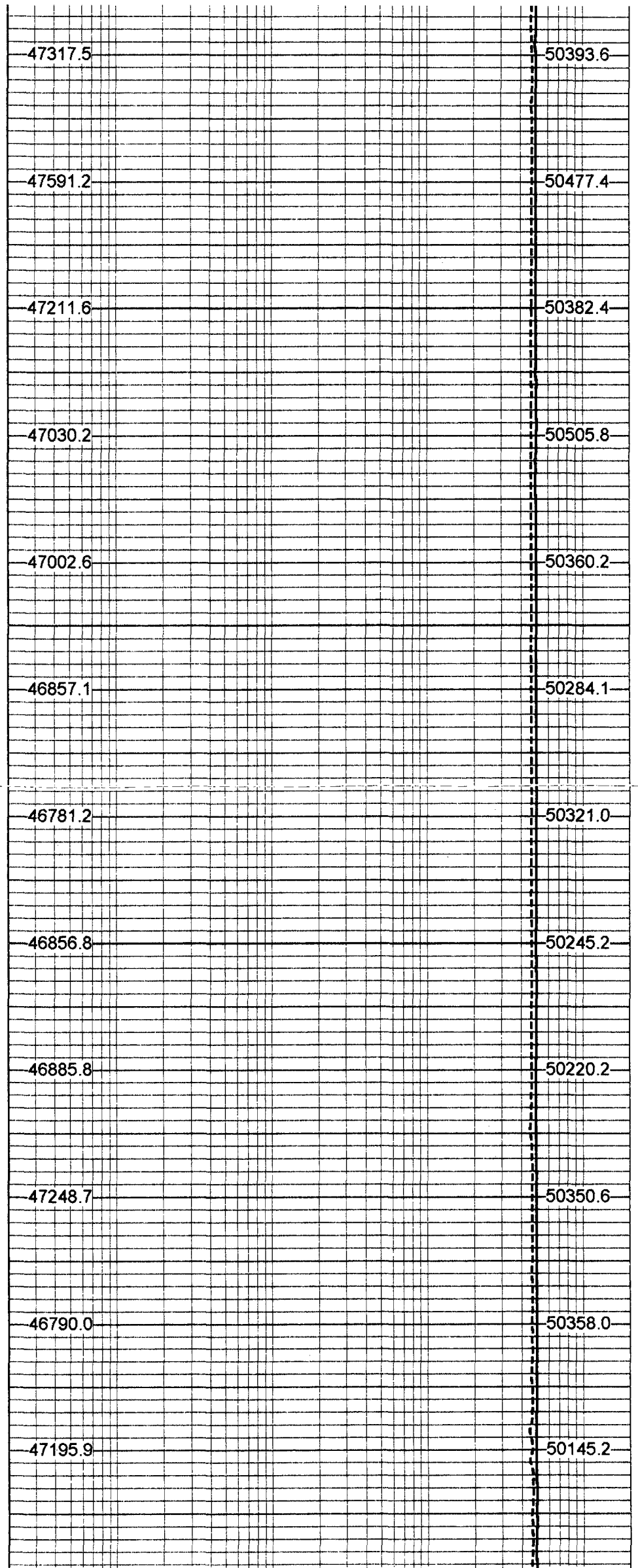


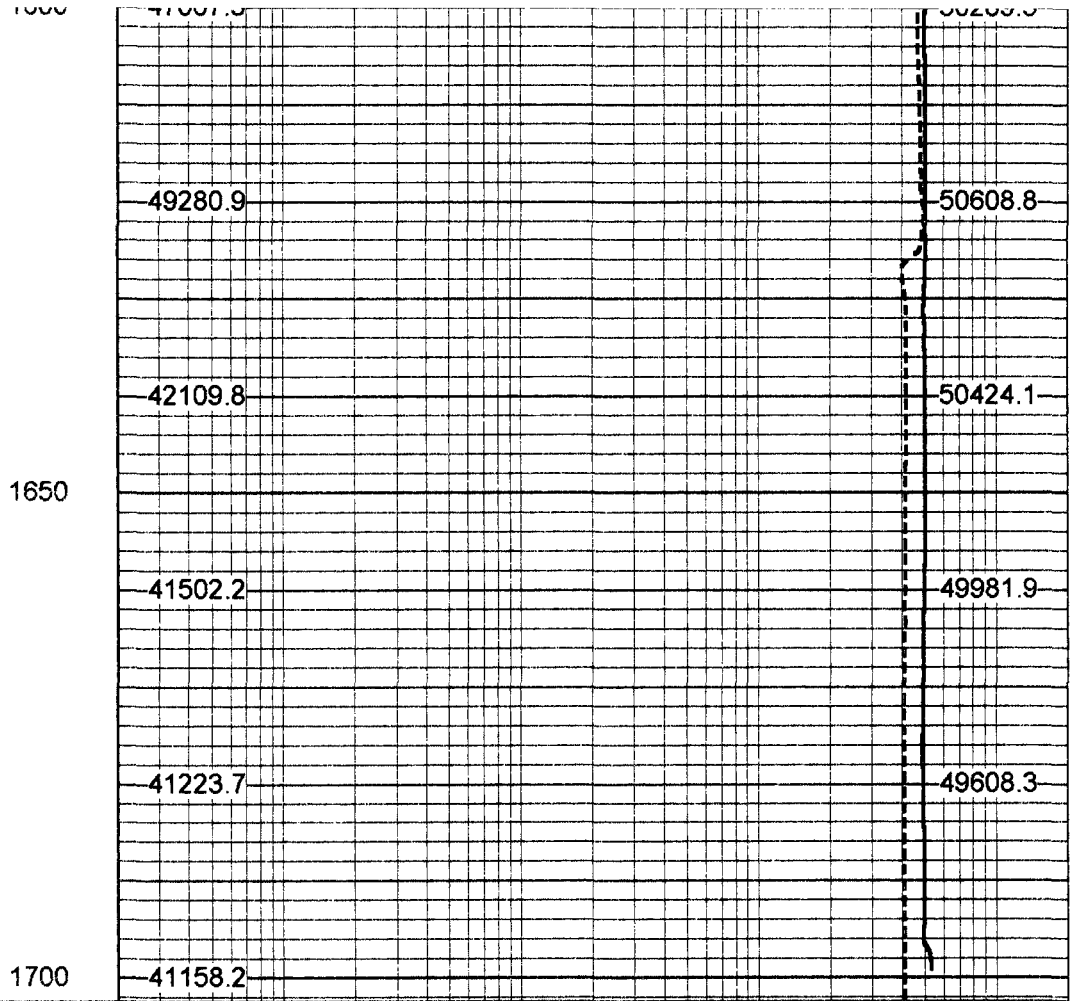
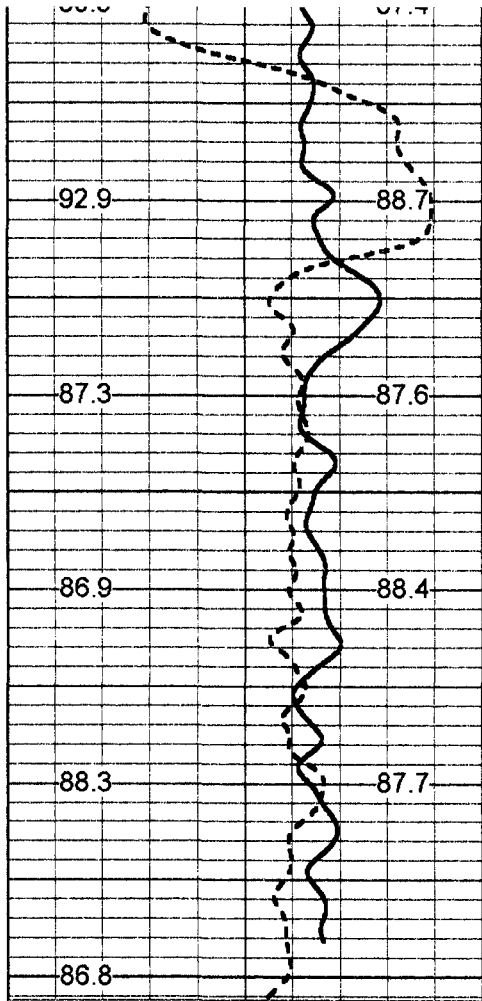
1400

1450

1500

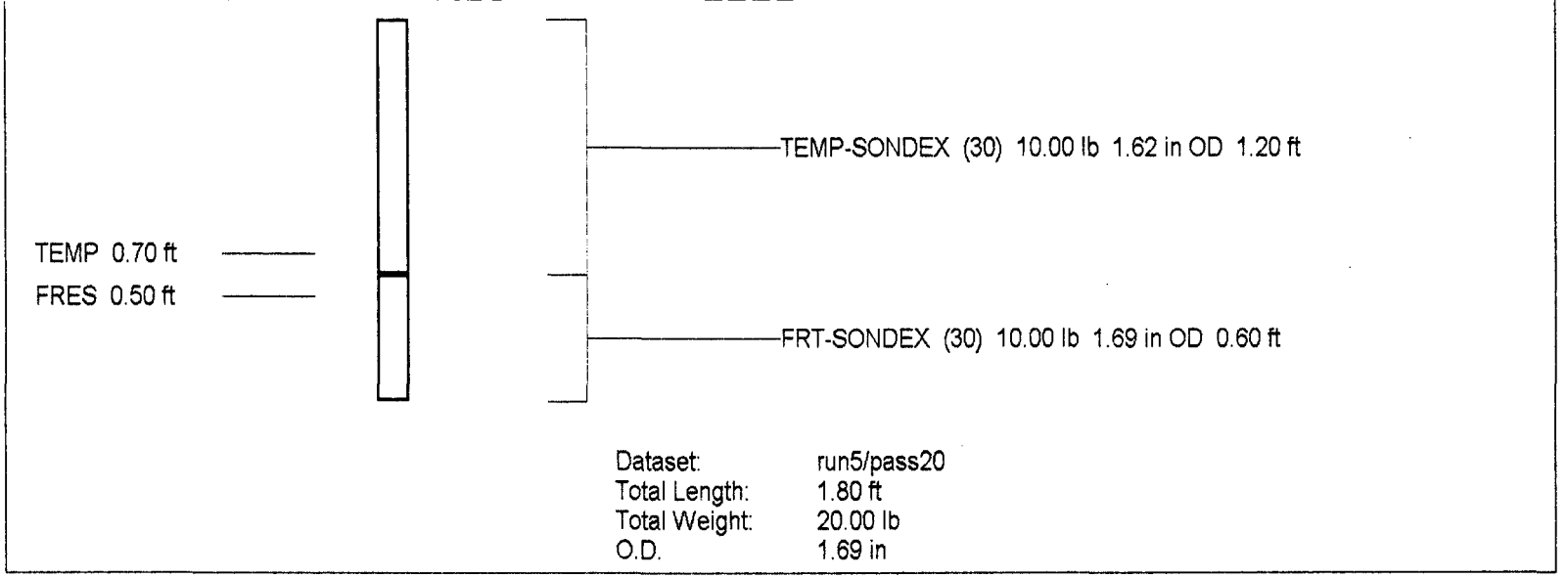
1550





75 DYNAMIC TEMP (degF) 95  
 75 STATIC TEMP (degF) 95

20 DYNAMIC FLUID CONDUCTIVITY (uS) 200000  
 20 STATIC FLUID CONDUCTIVITY (uS) 200000



### FRT Calibration Report

Serial Number:		30	
Tool Model:		SONDEX	
Performed:		Wed Aug 30 16:43:02 2000	

Point #	Reading		Reference
1	39.356	cps	750.000
2	292.001	cps	10000.000
3	1691.660	cps	50000.000
4		cps	
5		cps	
6		cps	

Serial Number:  
Tool Model:  
Performed:

30  
SONDEX  
Wed Aug 30 10:58:55 2000

Point #	Reading		Reference	
1	135.064	cps	38	degF
2	313.422	cps	76	degF
3	577.828	cps	130	degF