



# FLUID CONDUCTIVITY TEMPERATURE LOG

*LOGGED*

*MAR 12 2001*

*DEP. SOUTH DISTRICT*

Company CH2M HILL  
Well DIW #1  
Field GASPARILLA I.W.A  
County CHARLOTTE  
State FLORIDA

Company CH2M HILL  
Well DIW #1  
Field GASPARILLA ISLD. WATER ASSOC.  
County CHARLOTTE State FLORIDA

Location	Permanent Datum	GROUND LEVEL	Elevation	Other Services SEE COMMENTS
	Log Measured From	GROUND LEVEL	K.B. -8	
	Drilling Measured From	GROUND LEVEL	D.F. G.L.	

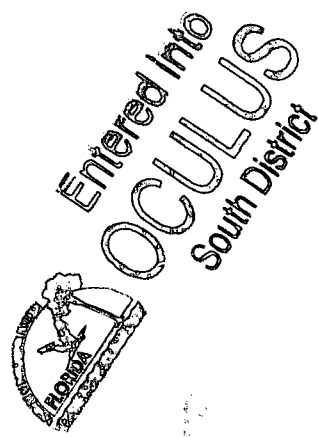
Date	MARCH 26, 2001						
Run Number	THREE						
Depth Driller	1000'						
Depth Logger	1000'						
Bottom Logged Interval	1000'						
Open Log Interval	SURFACE						
Open Hole Size	12.25"						
Type Fluid	WATER						
Viscosity	N/A						
Max. Recorded Temp.	87 DEGF						
Estimated Cement Top	N/A						
Time Well Ready	0700						
Time Logger on Bottom	0730						
Equipment Number	103						
Location	FT. MYERS						
Recorded By	DENISON						
Witnessed By	R. DEAN						
Borehole Record							
Run Number	Bit	From	To	Size	Weight	From	To
ONE	12.25"	SURFACE	375'				
TWO	36.5"	SURFACE	380'				
THREE	12.25"	CASING	1000'				
Tubing Record							
Running Record	Size	Wgt./ft	Top	Bottom			
Surface String	30	37.5	SURFACE	375'			
Production String							

<<< Fold Here >>>

All interpretations are opinions based on inferences from electrical or other measurements and we cannot and do not guarantee the accuracy or correctness of any interpretation, and we shall not, except in the case of gross or willful negligence on our part, be liable or responsible for any loss, costs, damages, or expenses incurred or sustained by anyone resulting from any interpretation made by any of our officers, agents or employees. These interpretations are also subject to our general terms and conditions set out in our current Price Schedule.

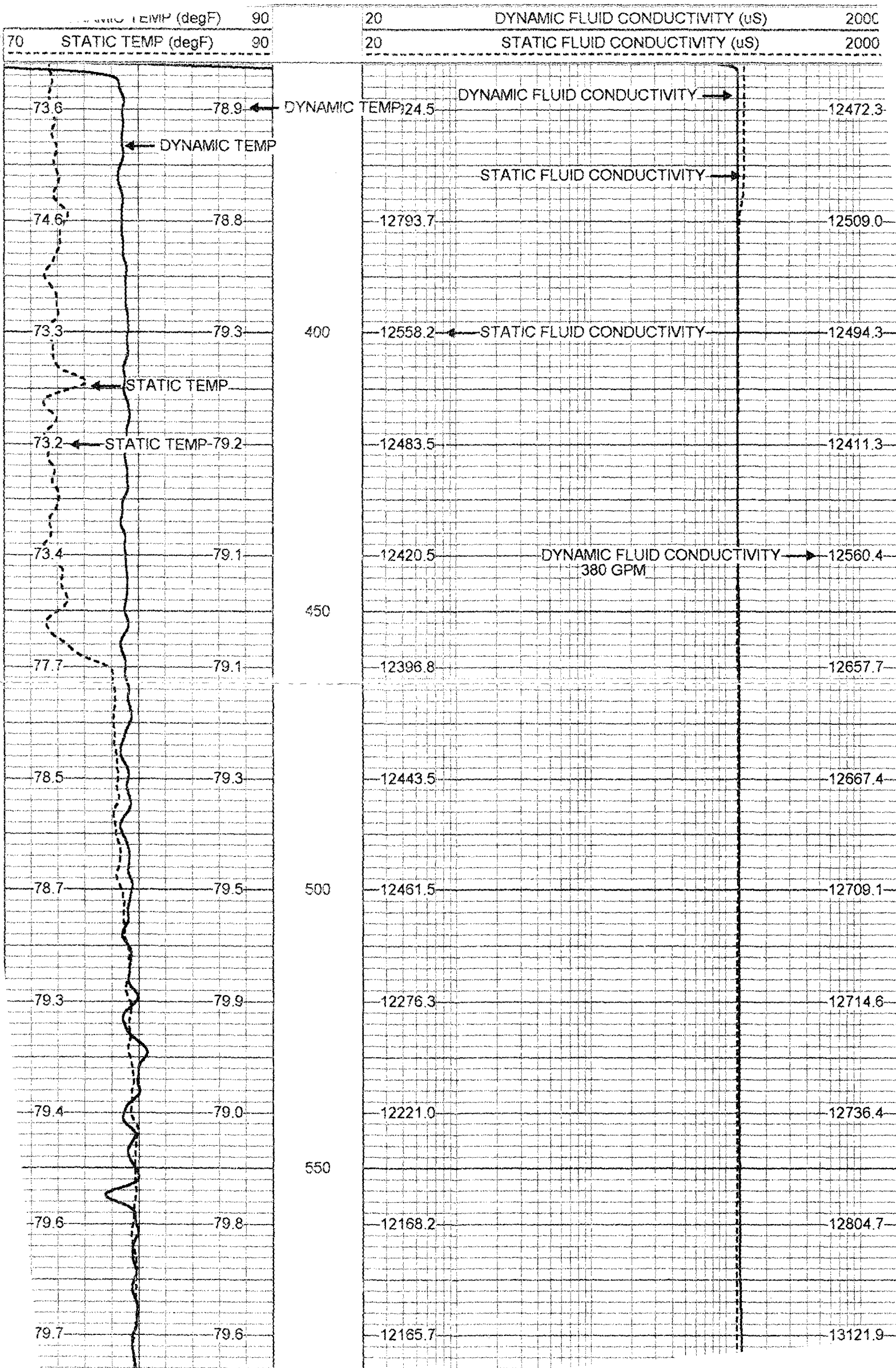
### Comments

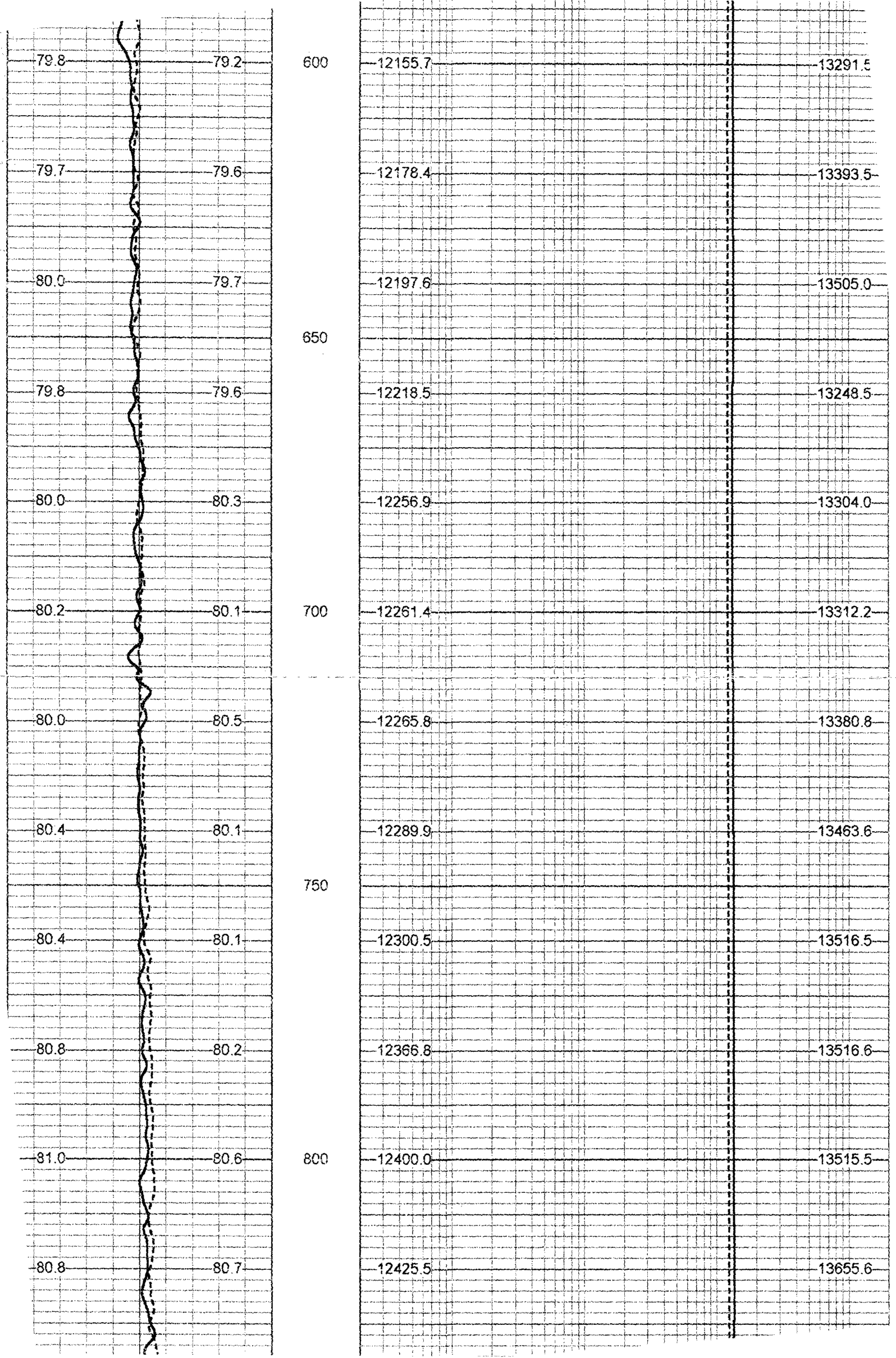
OTHER SERVICES:  
X-Y CALIPER/GAMMA RAY  
DUAL INDUCTION/LL3/SP  
BOREHOLE COMPENSATED SONIC  
FLOWMETER

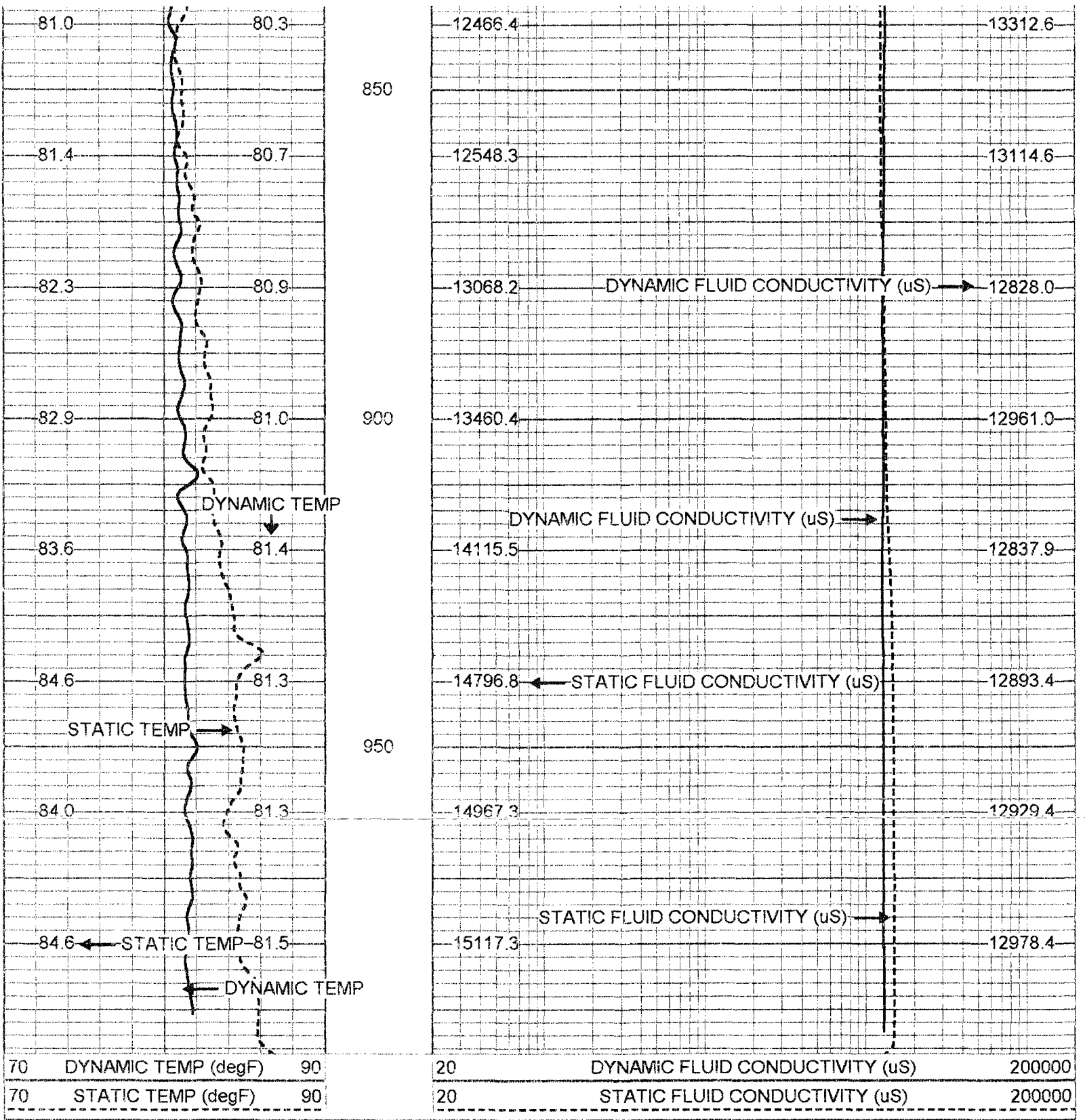


# MERGED DYN./STATIC

Database File: gasp.db  
Dataset Pathname: run3/pass22  
Presentation Format: frt\_mg.prs  
Dataset Creation: Mon Mar 26 19:00:52 2001 by Log VER\_5.4  
Charted by: Depth in Feet scaled 1:240







70 DYNAMIC TEMP (degF) 90  
 70 STATIC TEMP (degF) 90  
 20 DYNAMIC FLUID CONDUCTIVITY (uS) 200000  
 20 STATIC FLUID CONDUCTIVITY (uS) 200000

FRT Calibration Report

Serial Number: 31  
 Tool Model: SONDEX  
 Performed: Wed Aug 30 16:12:48 2000

Point #	Reading		Reference
1	25.476	cps	500.000
2	31.707	cps	1000.000
3	205.970	cps	10000.000
4	1184.540	cps	50000.000
5		cps	
6		cps	

Temperature Calibration Report

Serial Number: 31  
 Tool Model: SONDEX  
 Performed: Wed Aug 30 10:51:49 2000

Point #	Reading	Reference
1	123.142	36 degF
2	304.454	75 degF
3	694.864	156 degF

TEMP 0.70 ft  
 FRES 0.50 ft



TEMP-SONDEX (31) 10.00 lb 1.62 in OD 1.20 ft

FRT-SONDEX (31) 10.00 lb 1.69 in OD 0.60 ft

Dataset: run3/pass2  
 Total Length: 1.80 ft  
 Total Weight: 20.00 lb  
 O.D. 1.69 in