

Company **WATER RESOURCE SLTS.**
 Well **IW #2**
 Field **NCWRF**
 County **COLLIER**
 State **FL**

Company **WATER RESOURCES SOLUTIONS, INC.**
 Well **IW #2**
 Field **NCWRF**
 County **COLLIER SOUTH DISTRICT**
 Location **FLORIDA**

Permanent Datum **PAD**
 Log Measured From **GROUND LEVEL**
 Drilling Measured From

Location **SE 1/4 S27 T48S R25E**

Elevation **15'**
 Other Services **TRACER SURVEY**
 Elevation **K.B. N/A, D.F. 20.5', G.L. 15'**

Date **JAN 29, 2004**
 Run Number **RTS**
 Depth Driller **3250'**
 Depth Logger **2776'**
 Bottom Logged Interval **2776'**
 Top Log Interval **SURFACE**
 Open Hole Size **22"**
 Type Fluid **WATER**
 Density / Viscosity **N/A**
 Max. Recorded Temp. **92 F**
 Estimated Cement Top **NA**
 Time Well Ready **0700**
 Time Logger on Bottom **0800**
 Equipment Number **103**
 Location **FT. MYERS CATHY F. PROCTA**

Recorded By **FT. MYERS CATHY**
 Witnessed By **F. PROCTA**

Run Number **ONE**
 Bit Size **58.5"**
 From **SURFACE**
 To **413'**
 Size **FIVE**
 Weight **32.5"**
 From **CASING**
 To **2587'**

Run Number **TWO**
 Bit Size **12.25"**
 From **413'**
 To **1500'**
 Size **NINE**
 Weight **22"**
 From **CASING**
 To **3250'**

Run Number **THREE**
 Bit Size **47"**
 From **407'**
 To **1500'**
 Size **NINE**
 Weight **22"**
 From **CASING**
 To **3250'**

Run Number **FOUR**
 Bit Size **12.25"**
 From **CASING**
 To **2939'**
 Size **NINE**
 Weight **22"**
 From **CASING**
 To **3250'**

Casing Record
 Surface String **60"**
 Prod String **48"**
 Production String **42"**
 Liner **24"**

Well/Ft **375 W.T.**
 Well/Ft **375 W.T.**
 Well/Ft **375 W.T.**
 Well/Ft **5" W.T.**

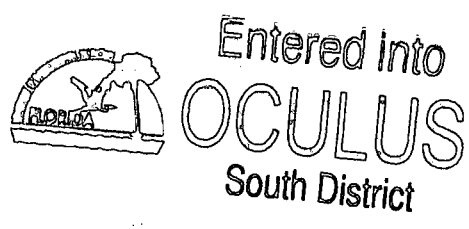
Top **SURFACE**
 Top **SURFACE**
 Top **SURFACE**
 Top **SURFACE**

Bottom **8'**
 Bottom **407'**
 Bottom **1425'**
 Bottom **2582'**

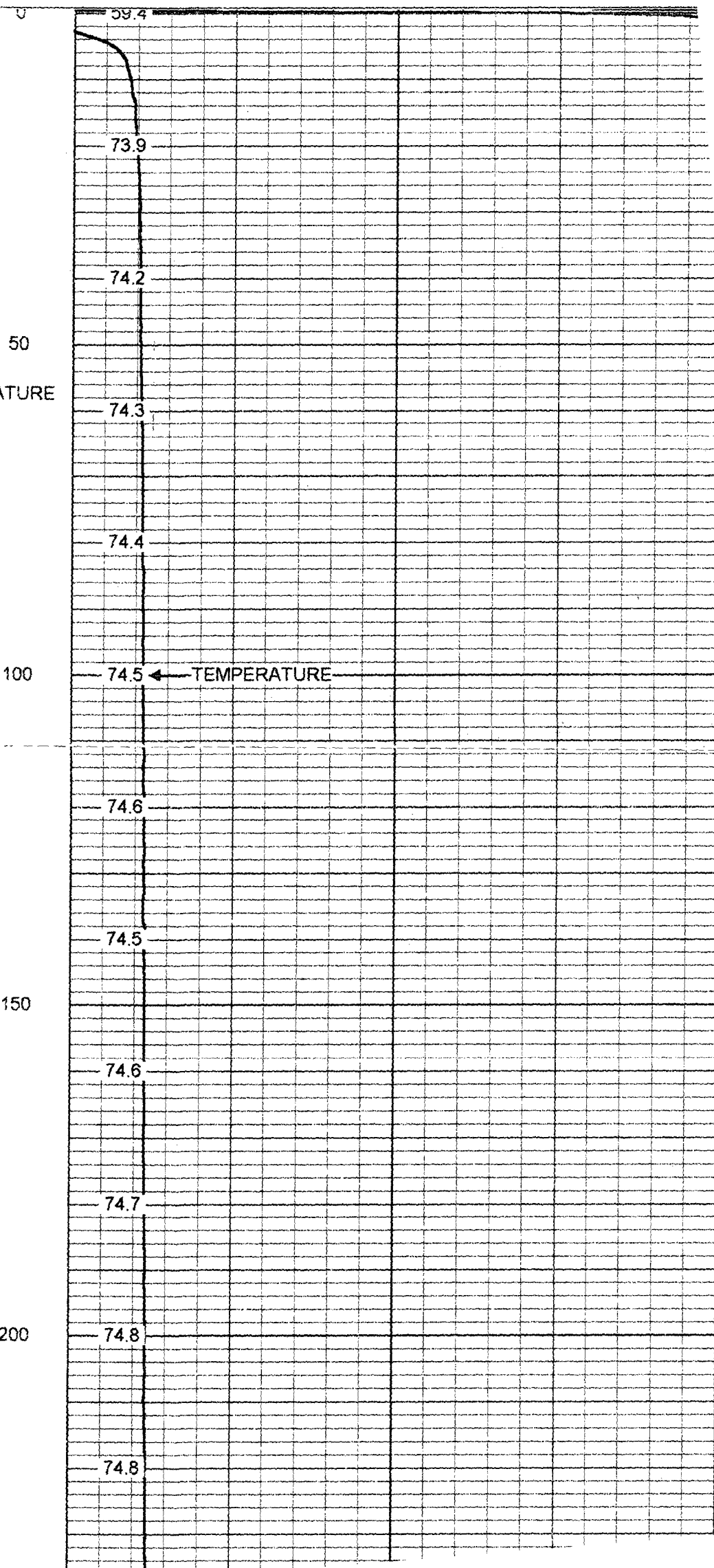
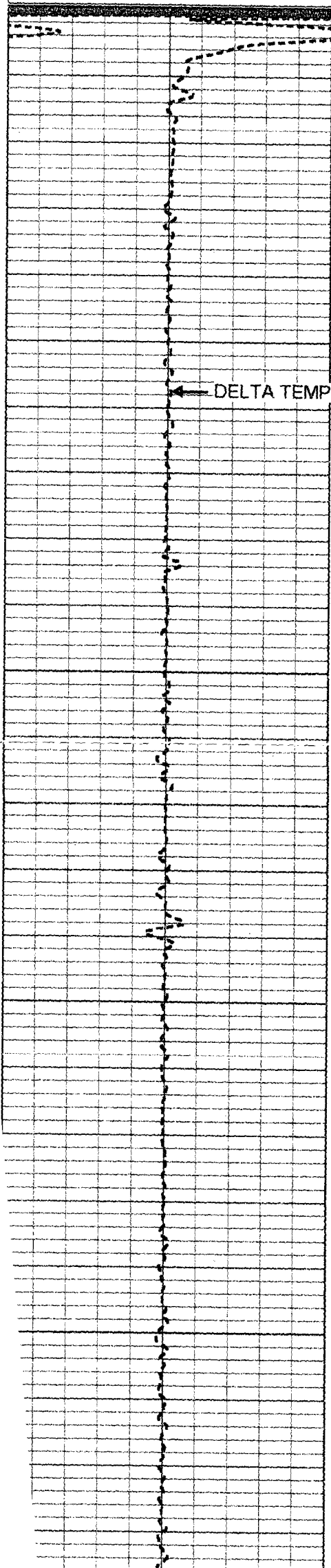
<<< Fold Here >>>

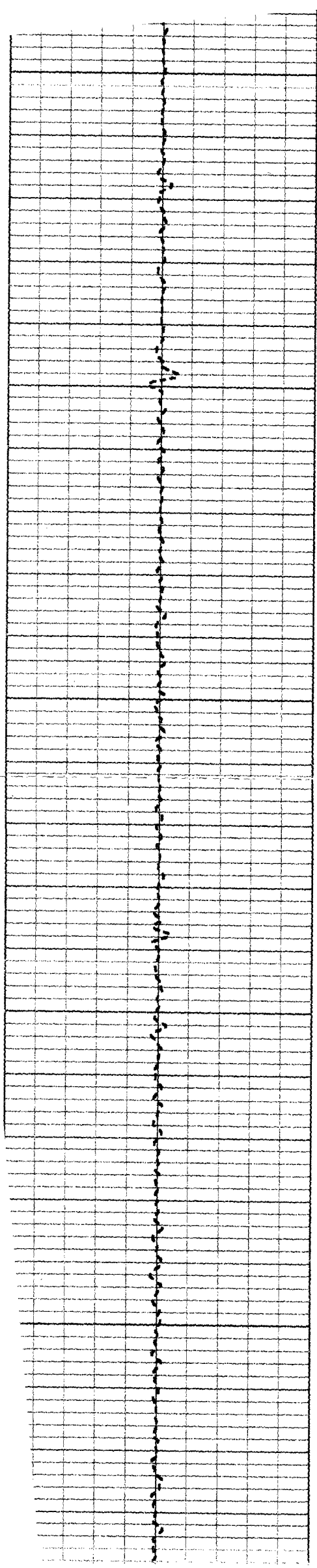
All interpretations are opinions based on inferences from electrical or other measurements and we cannot and do not guarantee the accuracy or correctness of any interpretation, and we shall not, except in the case of gross or willful negligence on our part, be liable or responsible for any loss, costs, damages, or expenses incurred or sustained by anyone resulting from any interpretation made by any of our officers, agents or employees. These interpretations are also subject to our general terms and conditions set out in our current Price Schedule.

Comments



TEMPERATURE





250

300

350

400

450

74.9

74.9

75.0

75.1

75.1

75.2

75.2

75.3

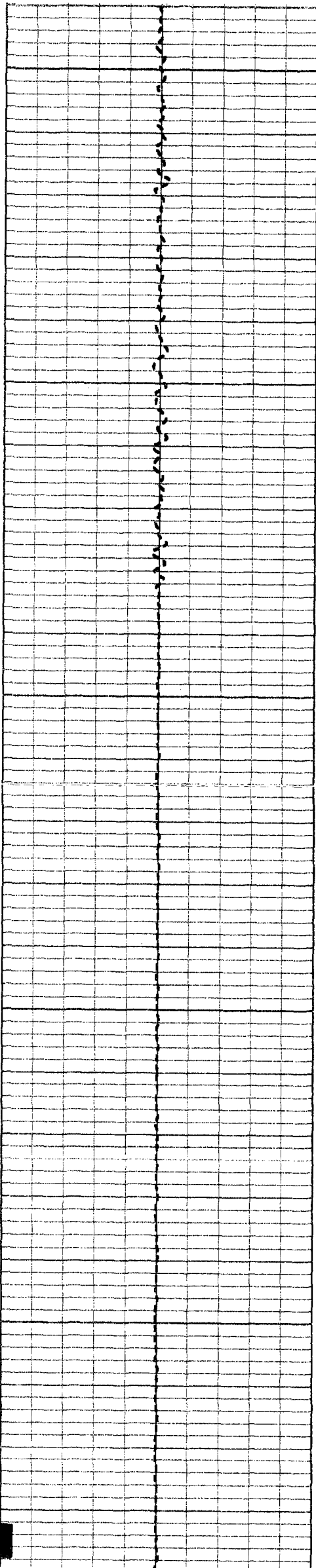
75.4

75.4

75.5

75.5

75.6



500

75.6

75.7

75.8

550

75.9

75.8

600

75.9

75.9

76.0

650

76.0

76.1

700

76.1

76.2

76.2

750

76.3

76.3

800

76.3

76.4

76.5

850

76.5

76.5

900

76.6

76.6

76.7

950

76.7

76.8

1000

76.8

76.9

76.9

1050

77.0

77.0

1100

77.1

77.1

77.2

1150

77.3

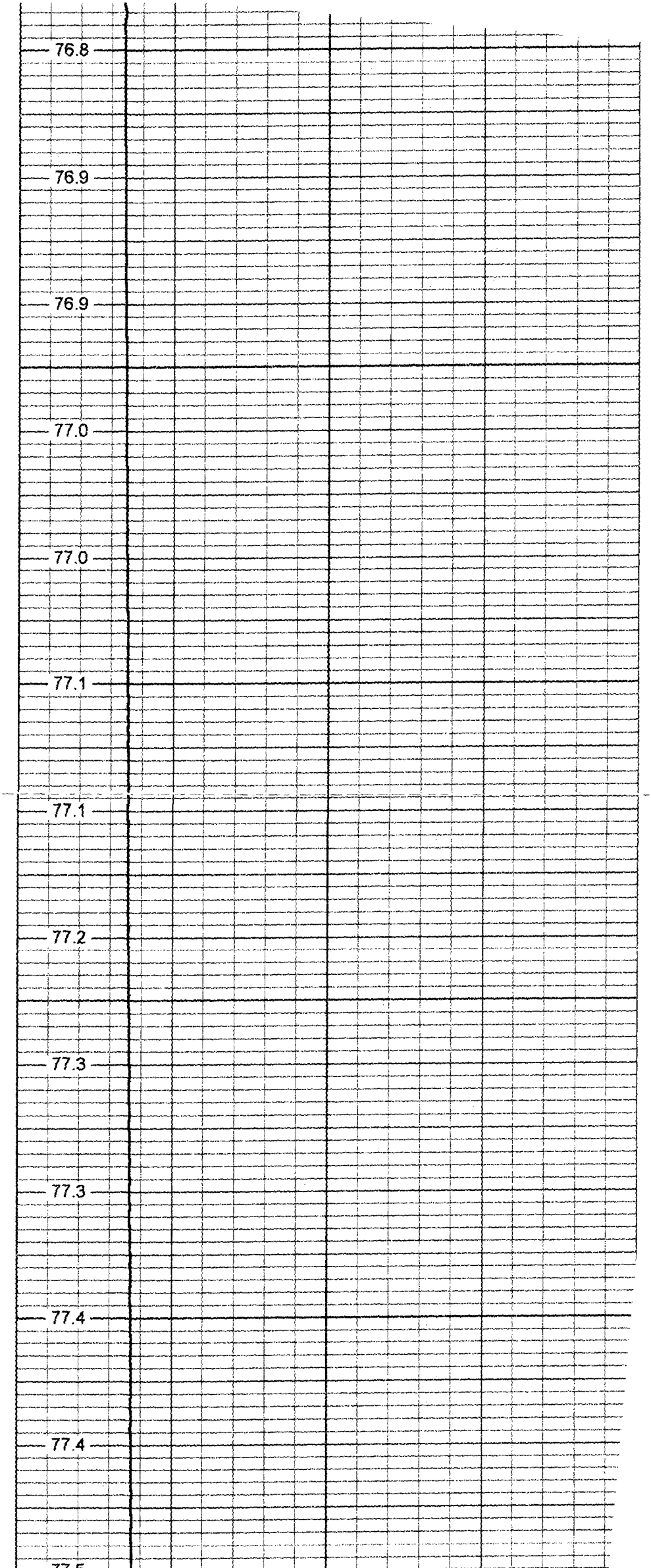
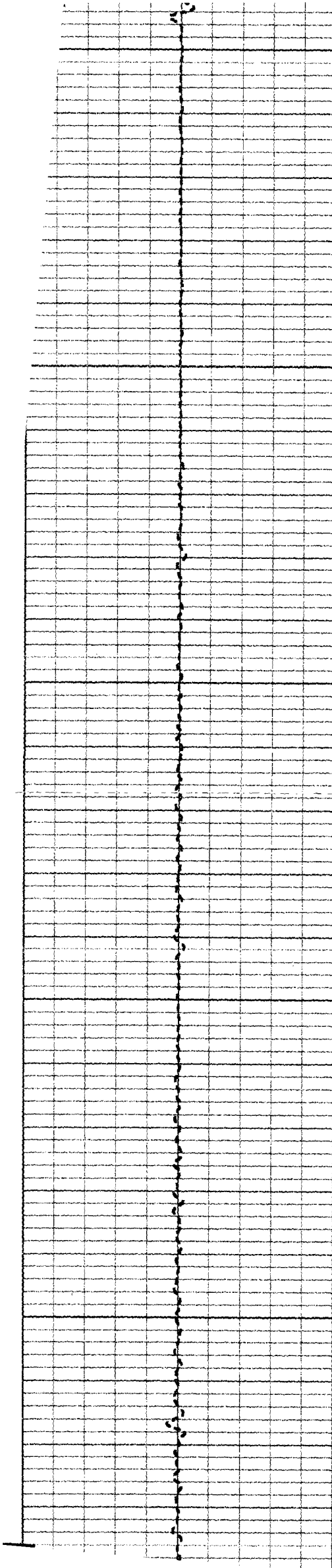
77.3

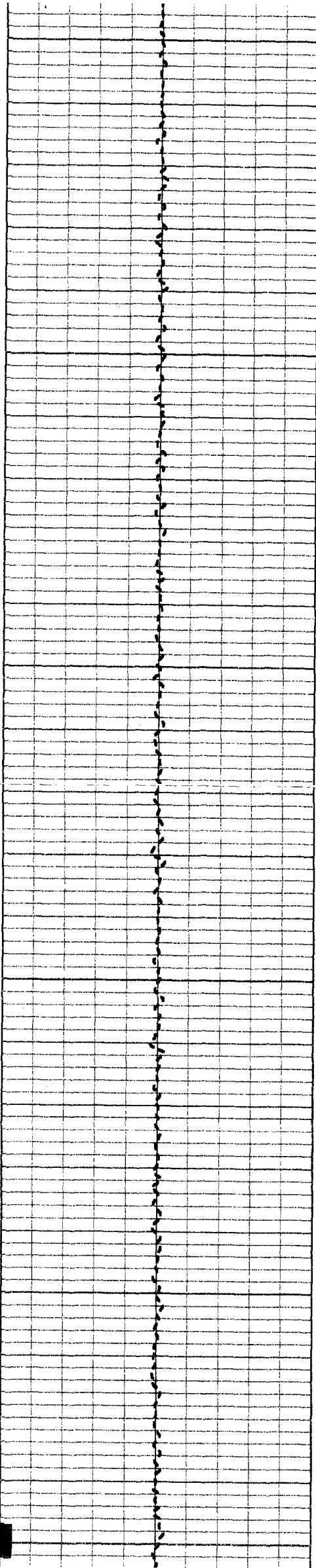
1200

77.4

77.4

77.5





1250

77.5

77.6

1300

77.6

77.7

77.8

1350

77.9

77.8

1400

77.9

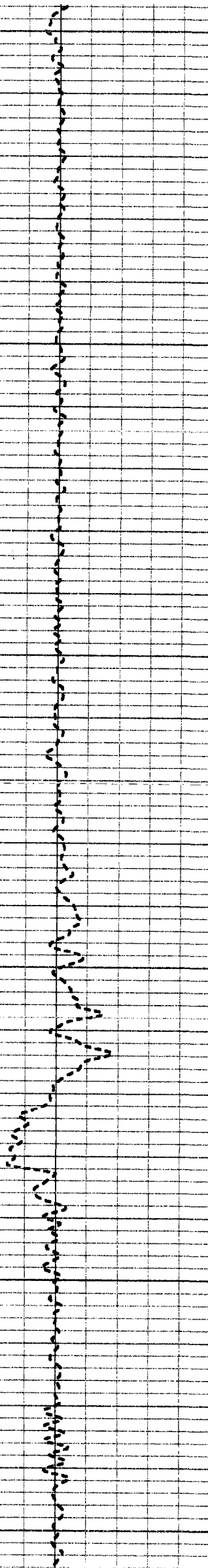
78.0

78.1

1450

78.3

78.4



1500

1550

1600

1650

1700

78.5

78.4

78.4

78.5

78.6

78.6

78.7

79.4

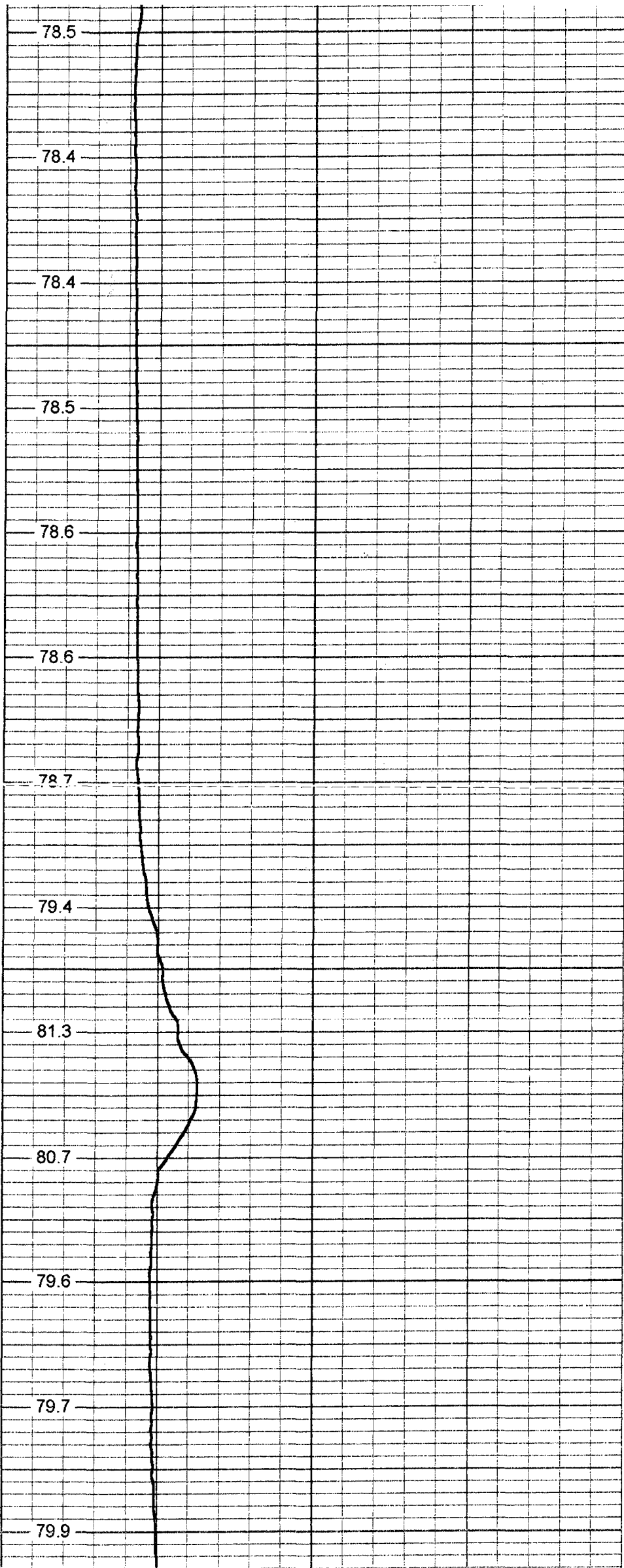
81.3

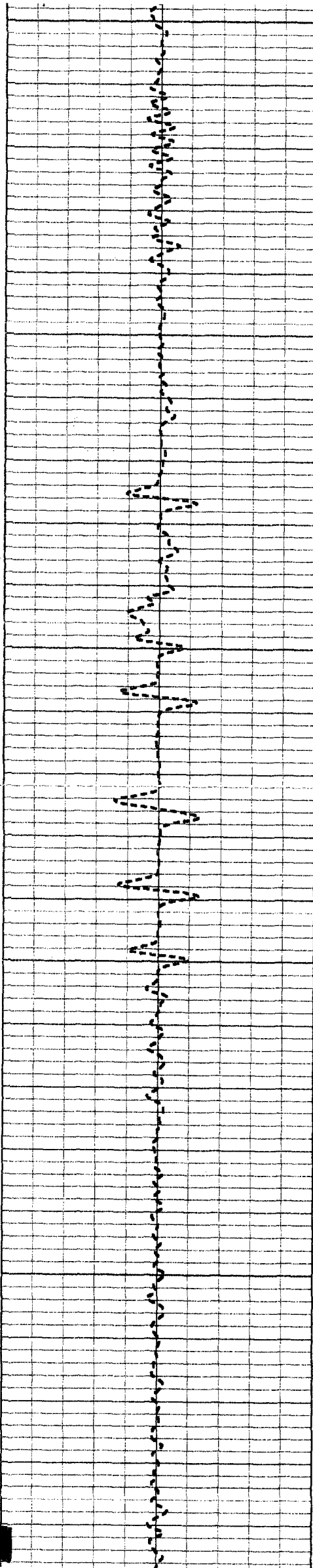
80.7

79.6

79.7

79.9





1750

79.8

79.8

1800

79.9

80.3

80.8

1850

80.3

80.3

1900

80.2

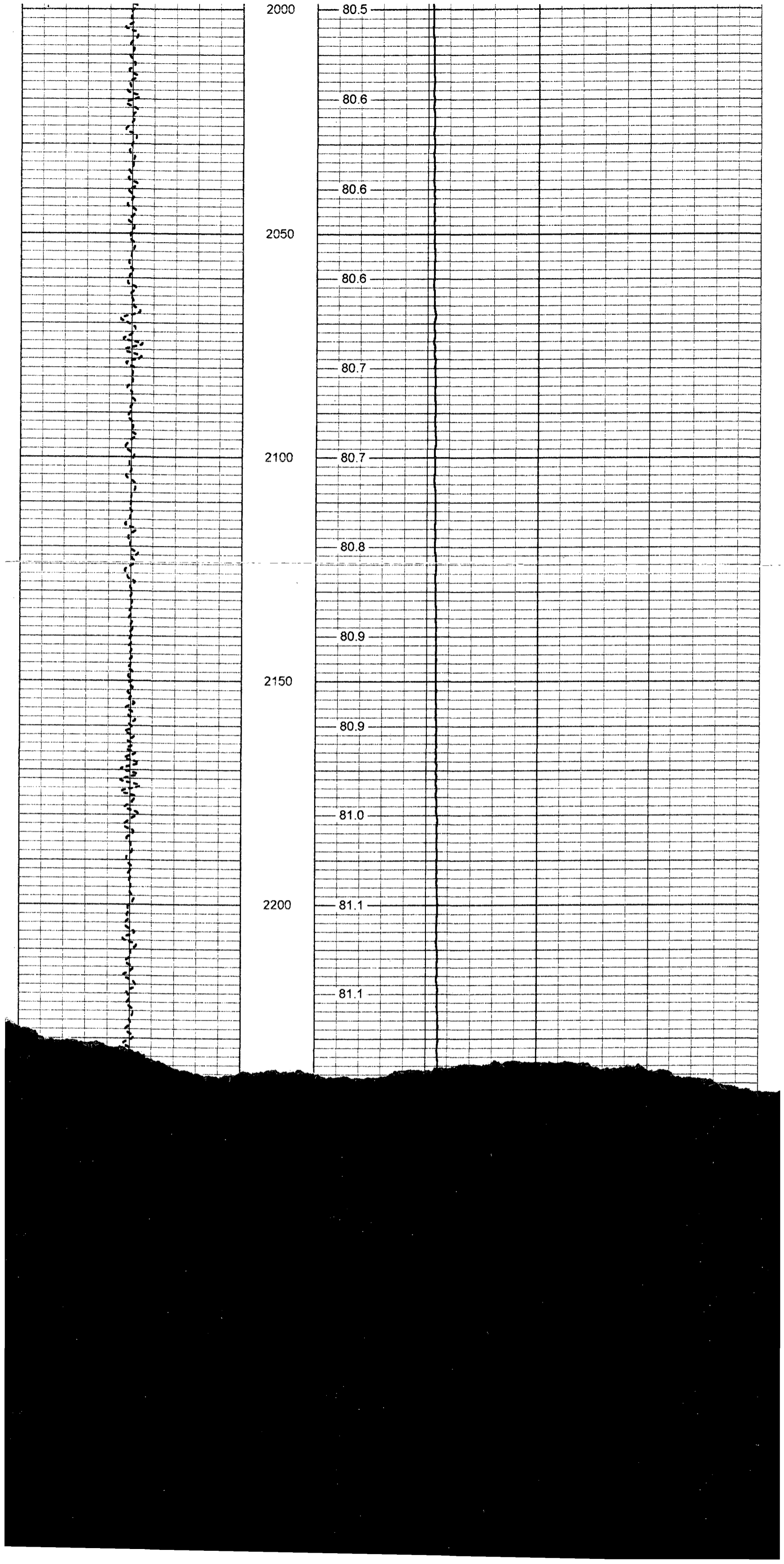
80.3

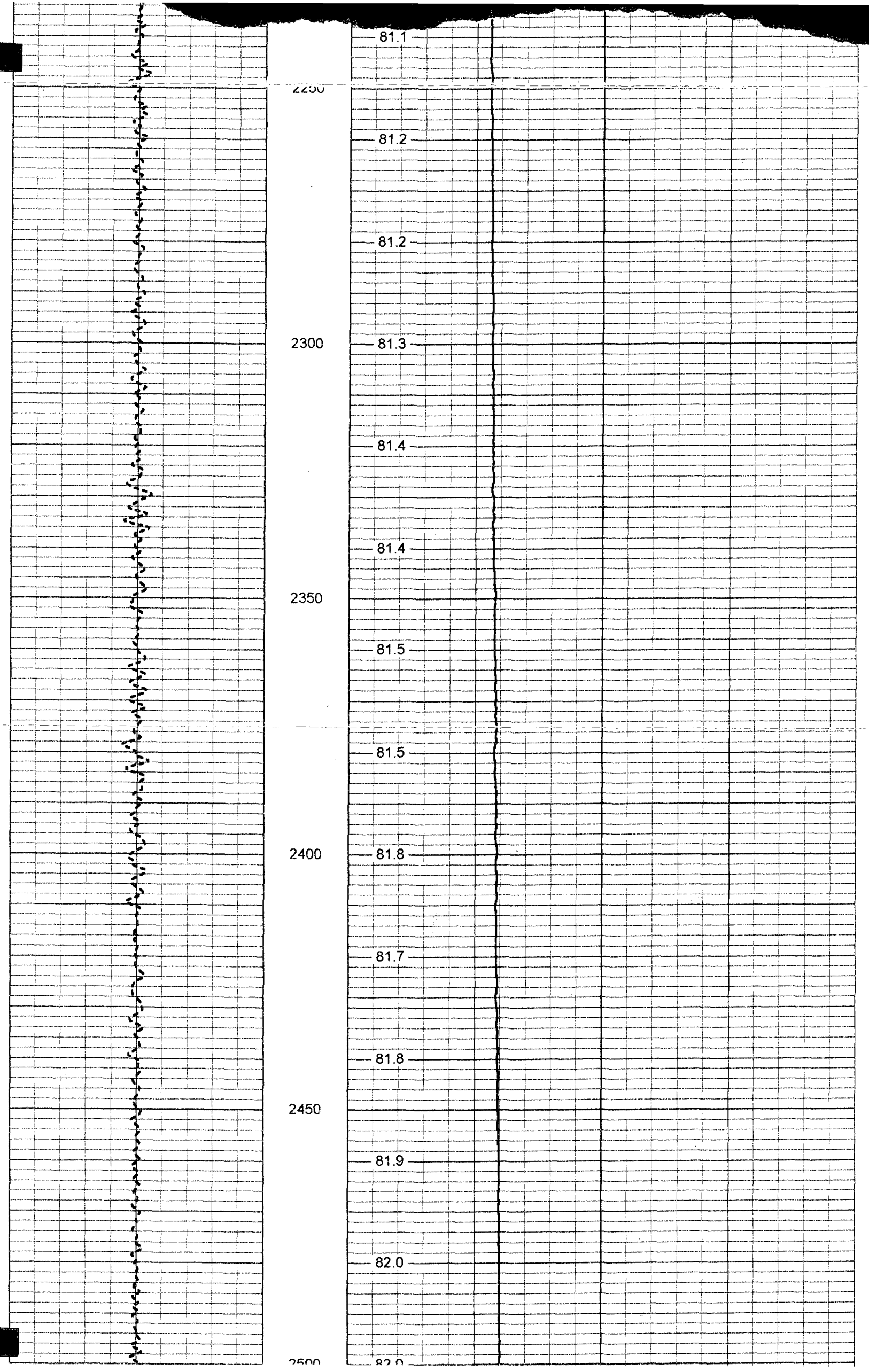
80.4

1950

80.4

80.4





81.1

2250

81.2

81.2

2300

81.3

81.4

2350

81.4

81.5

81.5

2400

81.8

81.7

81.8

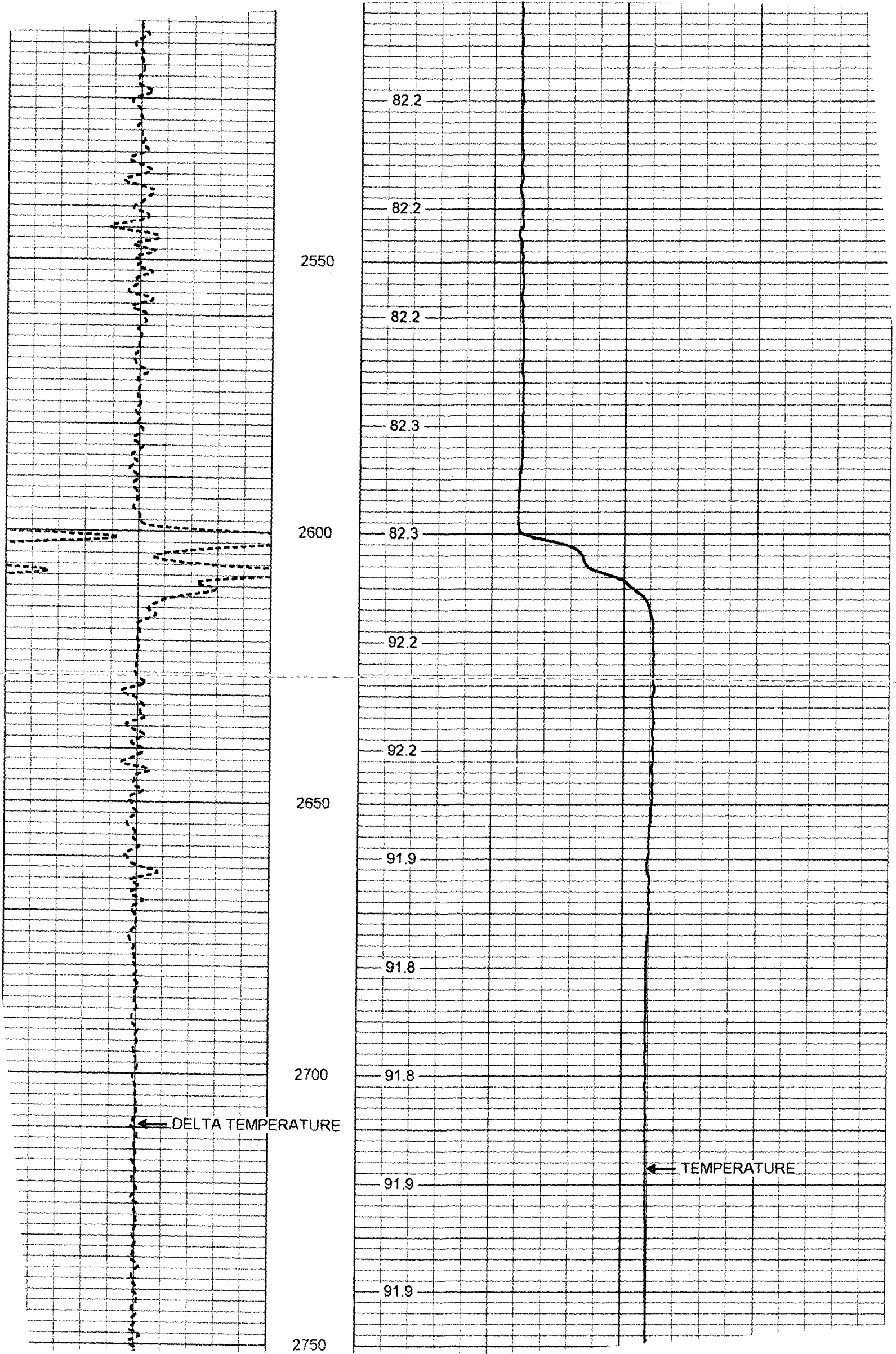
2450

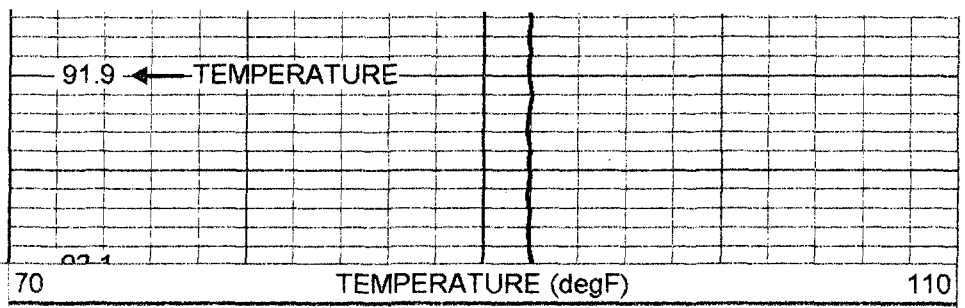
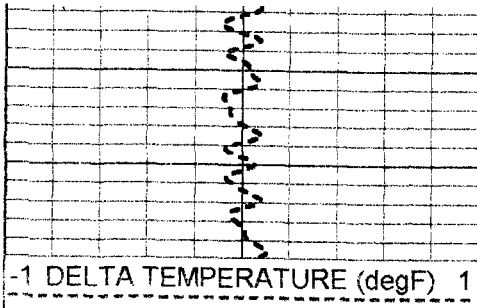
81.9

82.0

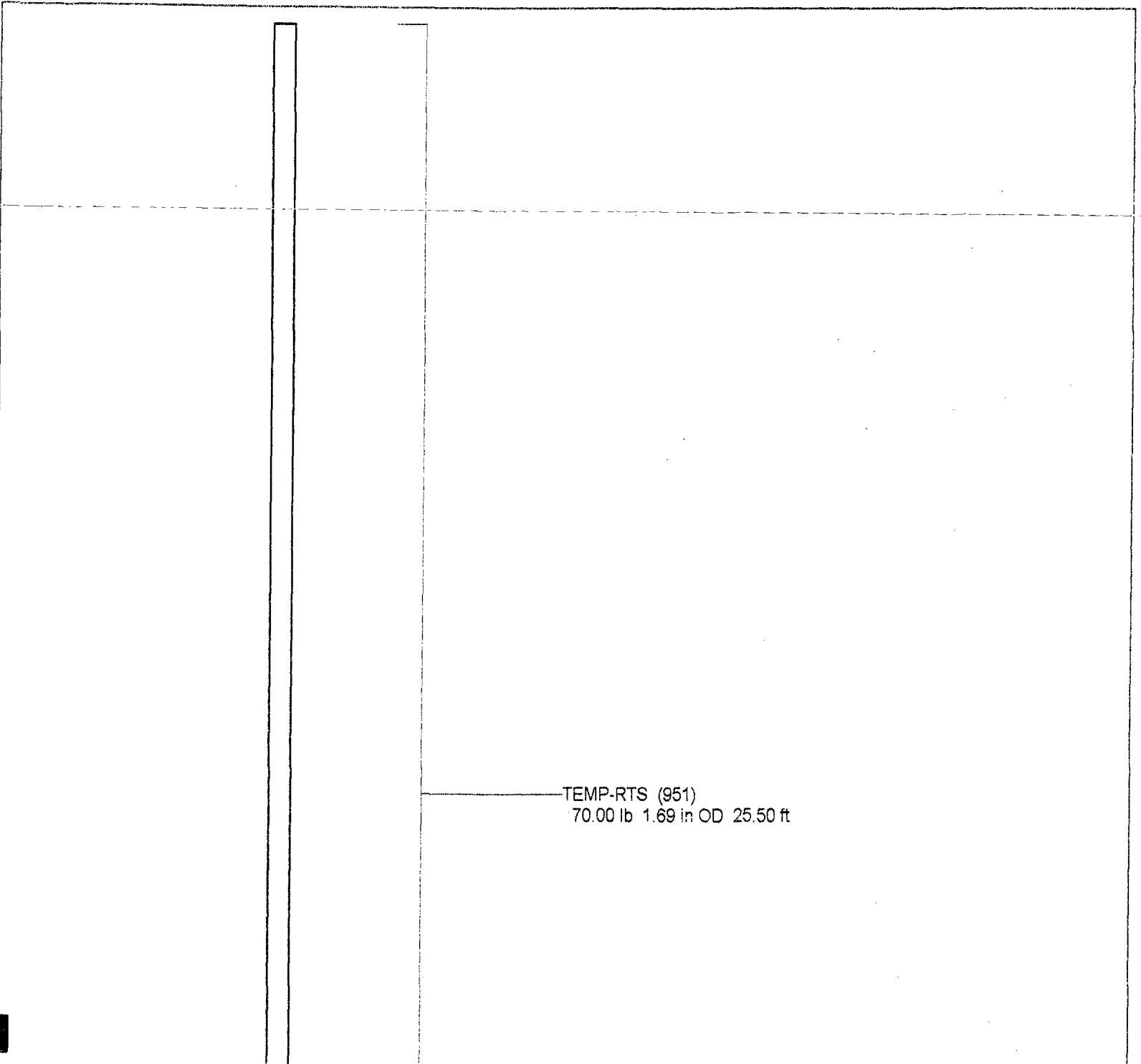
2500

82.0

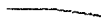




Temperature Calibration Report					
		Serial Number:		951	
		Tool Model:		RTS	
		Performed:		Wed Jul 02 15:32:33 2003	
Point #	Reading			Reference	
1	420.621	cps		41	degF
2	849.07	cps		81	degF
3	1618.63	cps		157	degF



TEMP 0.10 ft



Dataset:	rts/pass1
Total Length:	25.50 ft
Total Weight:	70.00 lb
O.D.	1.69 in