



GEOPHYSICAL LOGGING DIVISION

**YOUNGQUIST BROTHERS, Inc**

**TEMPERATURE LOG**

Company **WATER RESOURCE SLTS.**  
Well **DZMW**  
Field **NCWRF**  
County **COLLIER**  
State **FL**

Company **WATER RESOURCE SOLUTIONS, INC**  
Well **DZMW**  
Field **NCWRF**  
County **COLLIER** State **FLORIDA**

Location  
Permanent Datum **PAD** Elevation **15'**  
Log Measured From **GROUND LEVEL**  
Drilling Measured From  
Other Services  
**SEE COMMENTS**  
Elevation  
K.B. **N/A**  
D.F. **20.5'**  
G.L. **15'**

SE 1/4 S27 T48S R25E

Date **16-AUG-2003**

Run Number **FOUR**  
Depth Driller **1250'**  
Depth Logger **1250'**  
Bottom Logged Interval **1250'**  
Top Log Interval **350'**  
Open Hole Size **12.25"**  
Type Fluid **WATER**  
Density / Viscosity **N/A**  
Max. Recorded Temp. **N/A**  
Estimated Cement Top **N/A**  
Time Well Ready **1400**  
Time Logger on Bottom **1415**  
Equipment Number **103**  
Location **FT MYERS CATHY T. NELSON**  
Recorded By  
Witnessed By

Run Number	Borehole Record		Tubing Record	
	Bit	From	To	Size
ONE	42.5"	SURFACE	410'	
TWO	12.25"	410'	1250'	

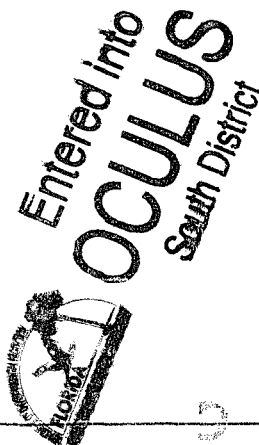
Casing Record	Size	Wgt/Ft	Top		Bottom
			From	To	
Surface String	24"	375'	SURFACE		400'
Prod. String					
Production String					
Liner					

<<< Fold Here >>>

All interpretations are opinions based on inferences from electrical or other measurements and we cannot and do not guarantee the accuracy or correctness of any interpretation, and we shall not, except in the case of gross or willful negligence on our part, be liable or responsible for any loss, costs, damages, or expenses incurred or sustained by anyone resulting from any interpretation made by any of our officers, agents or employees. These interpretations are also subject to our general terms and conditions set out in our current Price Schedule.

Comments

OTHER SERVICES:  
XY CALIPER / GAMMA RAY  
DUAL INDUCTION  
SONIC



**TEMPERATURE**

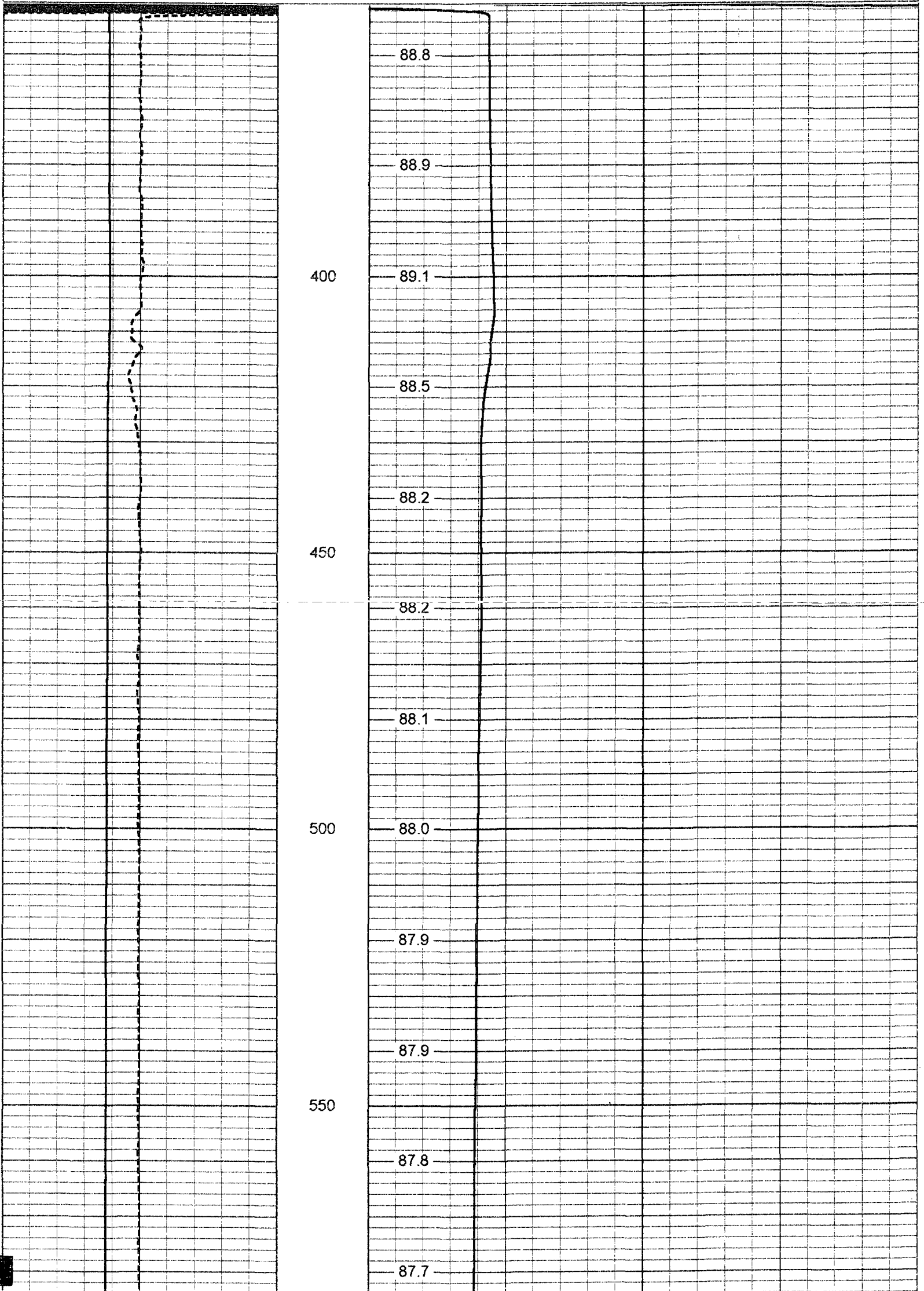
Database File: **ncdzmw.db**  
Dataset Pathname: **run4/pass1**  
Presentation Format: **temp**  
Dataset Creation: **Sat Aug 16 13:58:12 2003 by Log 6.2\_B4**  
Charted by: **Depth in Feet scaled 1:240**

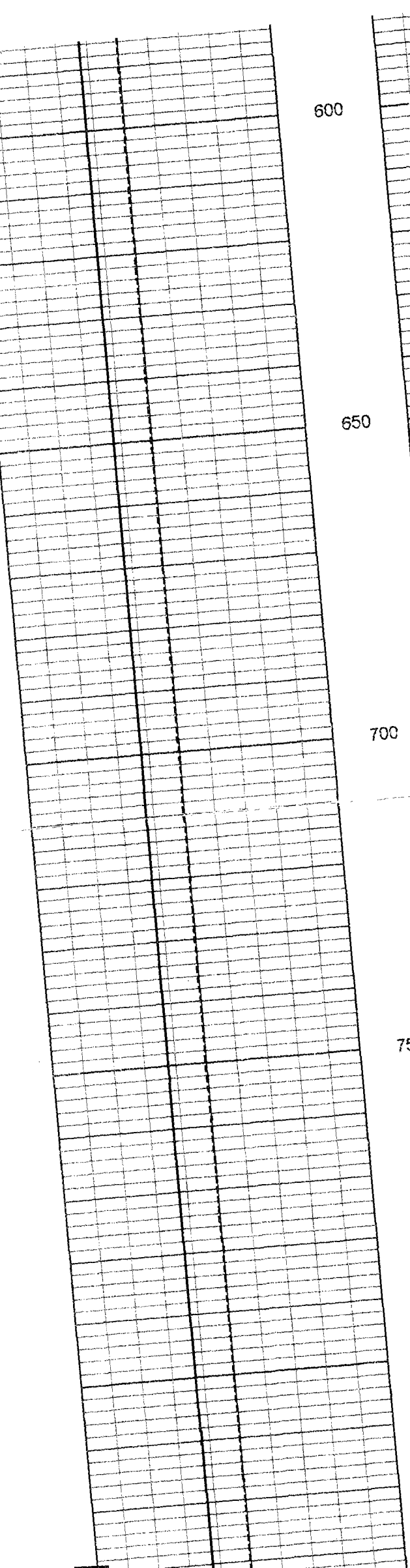
-1 DELTA TEMPERATURE (degF) 1  
50 TEMPERATURE (degF) 150

80

TEMPERATURE (degF)

120





600

87.7

87.7

87.7

650

87.7

87.6

700

87.6

87.6

87.6

750

87.6

87.6

800

87.6

87.6

850

87.6

87.6

87.6

900

87.6

87.6

87.7

950

87.7

87.7

1000

87.7

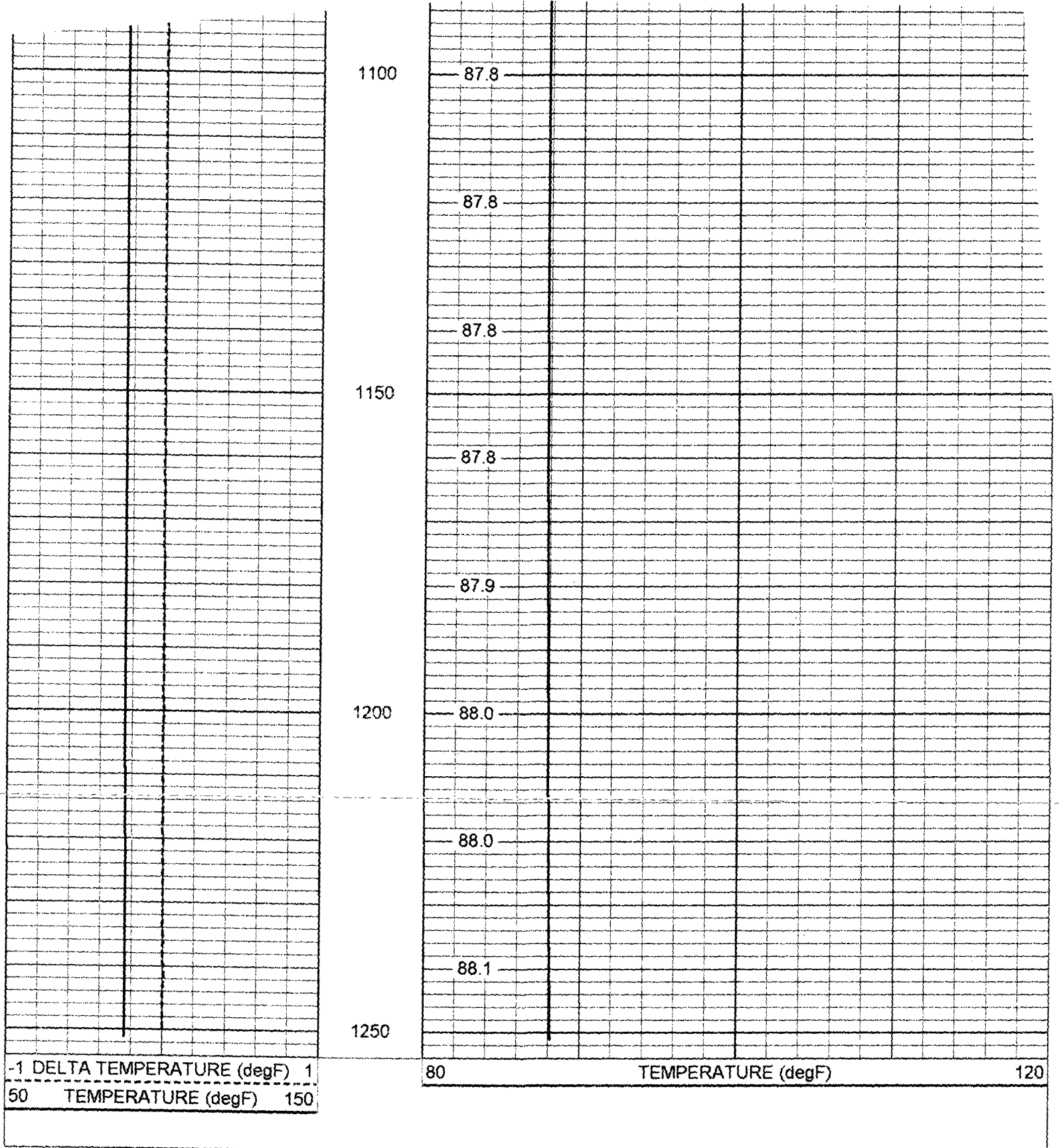
87.7

87.8

1050

87.8

87.8



Temperature Calibration Report

Serial Number: 17  
 Tool Model: MLS  
 Performed: Fri Apr 04 14:49:15 2003

Point #	Reading		Reference	
1	320	cps	32	degF
2	700	cps	70	degF
3	2000	cps	200	degF

TEMP-MLS (17)  
30.00 lb 1.62 in OD 2.45 ft

TEMP 0.25 ft

Dataset: run4/pass1  
Total Length: 2.45 ft  
Total Weight: 30.00 lb  
O.D.: 1.62 in