



**YOUNGQUIST
BROTHERS, Inc**

GEOPHYSICAL LOGGING DIVISION

**HIGH RESOLUTION
TEMPERATURE
LOG**

Company CH2M HILL
Well WRF DEEP IW #1
Field BONITA SPRINGS W.T.P
County LEE
State FLORIDA

Company CH2M HILL
Well WRF DEEP IW #1
Field BONITA SPRINGS W.T.P.
County LEE
State FLORIDA

Location
Permanent Datum PAD
Log Measured From PAD
Drilling Measured From PAD

Other Services
RTS

Elevation
K.B.
D.F.
G.L.

DEF. SOUTH DISTRICT

NOV 9 2004

Date 9-JAN-2004
Run Number RTS
Depth Driller 3215'
Depth Logger 3200'
Bottom Logged Interval 3200'
Top Log Interval SURFACE
Open Hole Size 14.75"
Type Fluid WATER
Density / Viscosity NA
Max. Recorded Temp. N/A
Estimated Cement Top N/A
Time Well Ready 0700
Time Logger on Bottom 0830
Equipment Number 103
Location FT. MYERS
Recorded By CATHEY
Witnessed By M. SCHILLING

Borehole Record				Tubing Record			
Run Number	Bit Size	From	To	Size	Weight	From	To
ONE	12.25"	SURFACE	500'				
TWO	48.5"	SURFACE	455'				
THREE	12.25"	SURFACE	1750'				
FOUR	12.25"	SURFACE	3220'				
Casing Record	Size	Wgt/ft	Top	Bottom			
Surface String	38"	375	SURFACE	450'			
Prod. String	26"	375	SURFACE	1650'			
Production String	16"	500	SURFACE	2490'			
Liner							

<<< Fold Here >>>

All interpretations are opinions based on inferences from electrical or other measurements and we cannot and do not guarantee the accuracy or correctness of any interpretation, and we shall not, except in the case of gross or willful negligence on our part, be liable or responsible for any loss, costs, damages, or expenses incurred or sustained by anyone resulting from any interpretation made by any of our officers, agents or employees. These interpretations are also subject to our general terms and conditions set out in our current Price Schedule.

Comments

Entered into
OCCULUS
South District

**YOUNGQUIST
BROTHERS, Inc**
GEOPHYSICAL LOGGING DIVISION

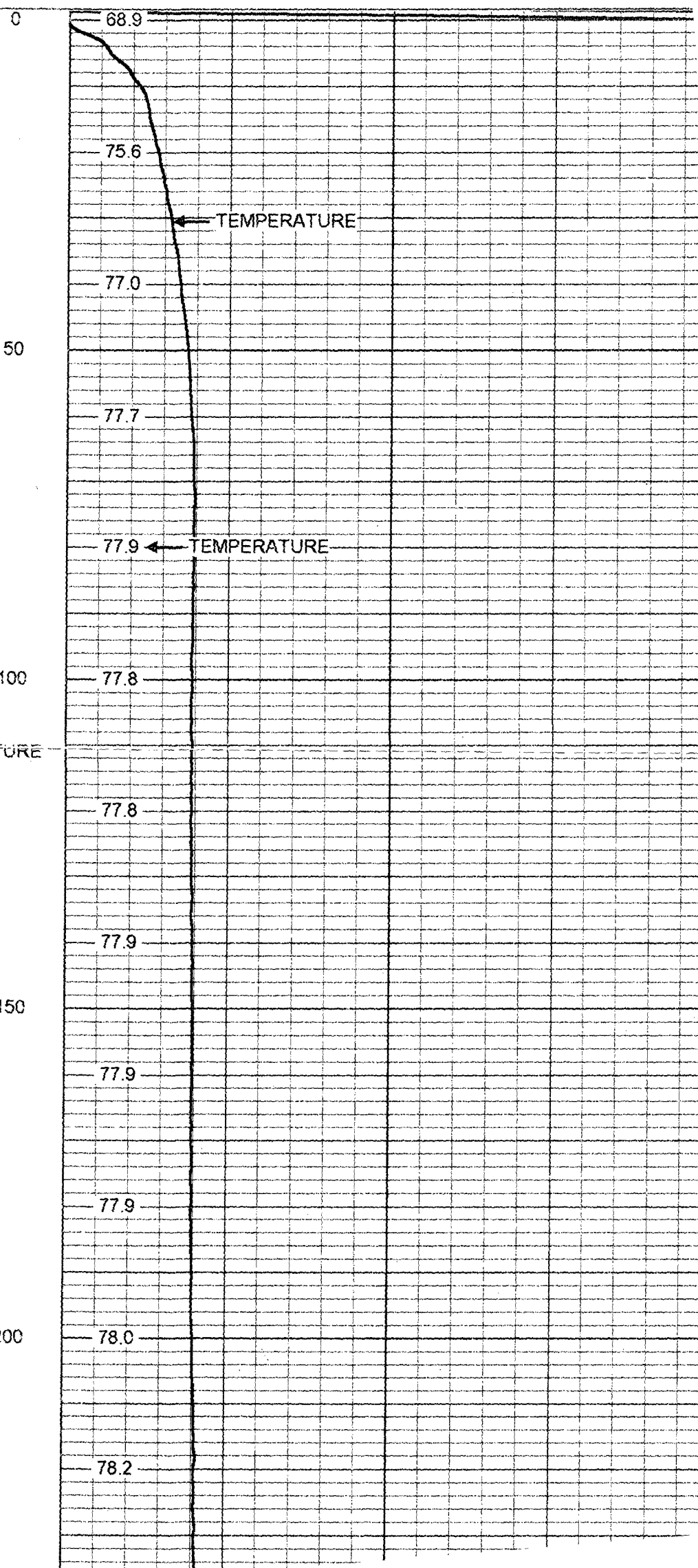
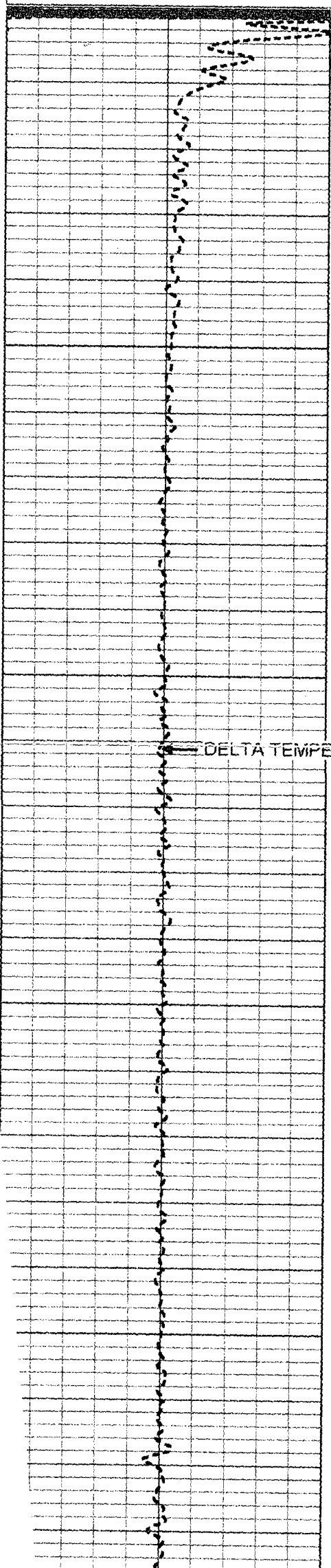
TEMPERATURE

Database File: bswrfrts.db
Dataset Pathname: pass1
Presentation Format: temp
Dataset Creation: Fri Jan 09 07:39:15 2004 by Log 6.2_B4
Checked by:

TEMPERATURE (degF) 1

70

TEMPERATURE (degF)



250

78.4

78.4

78.5

300

78.6

78.8

78.9

350

79.0

79.2

400

79.4

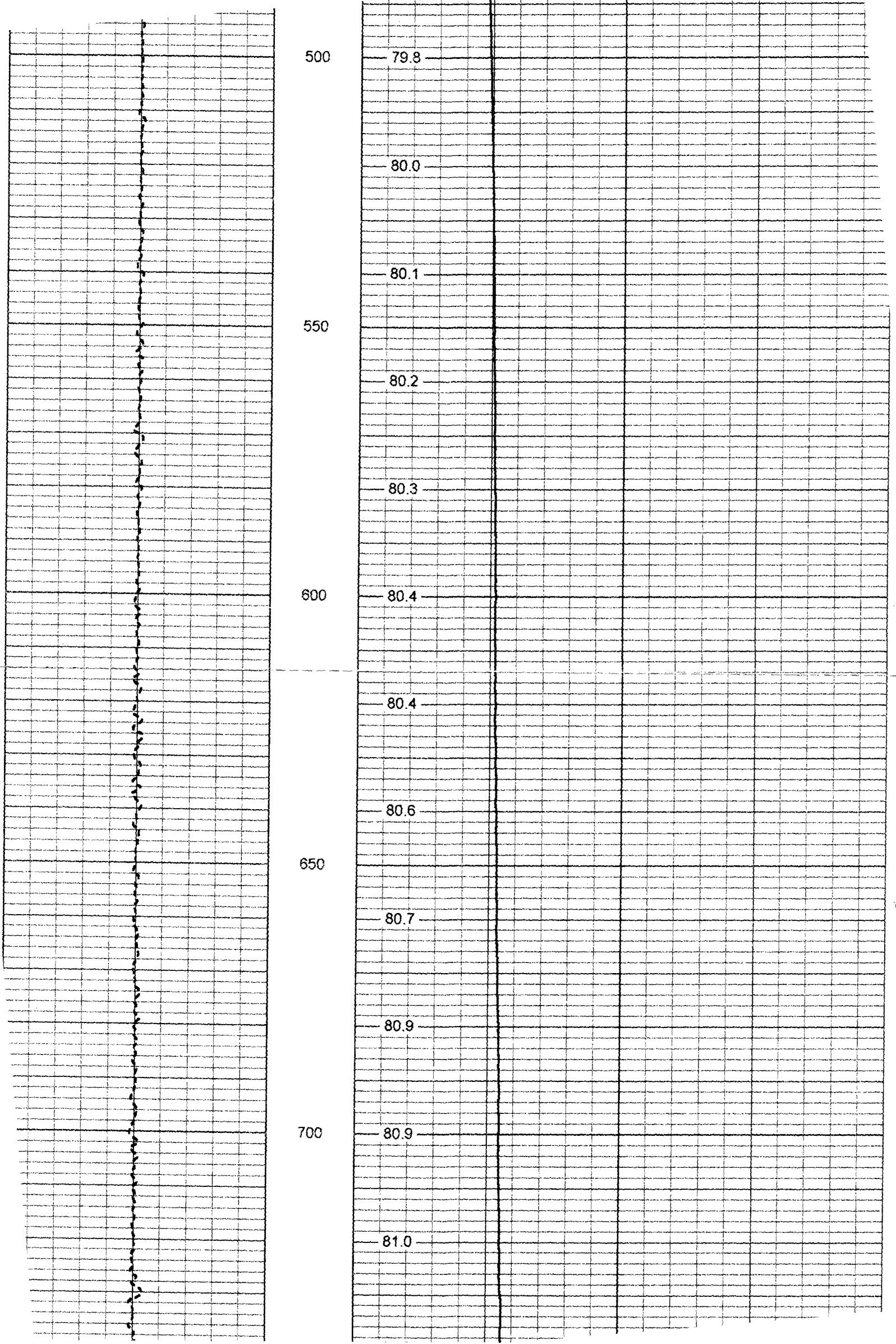
79.6

79.8

450

79.6

79.7



750

81.3

81.3

800

81.4

81.5

81.7

850

82.3

82.4

900

83.1

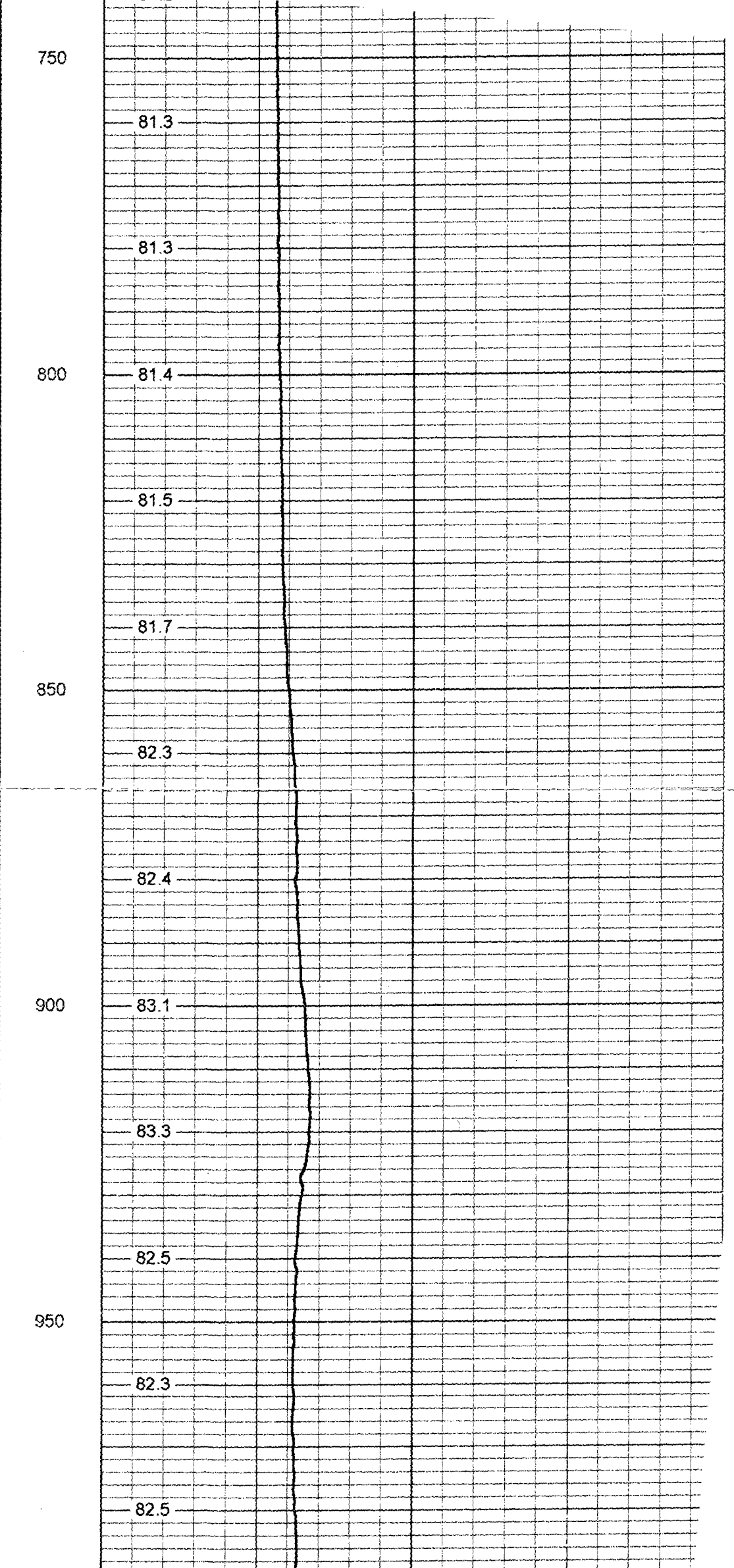
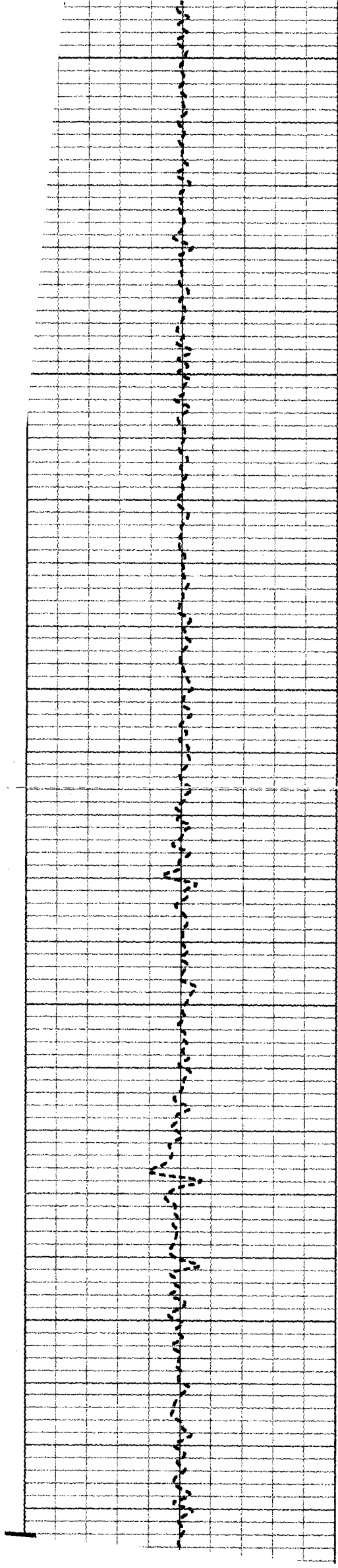
83.3

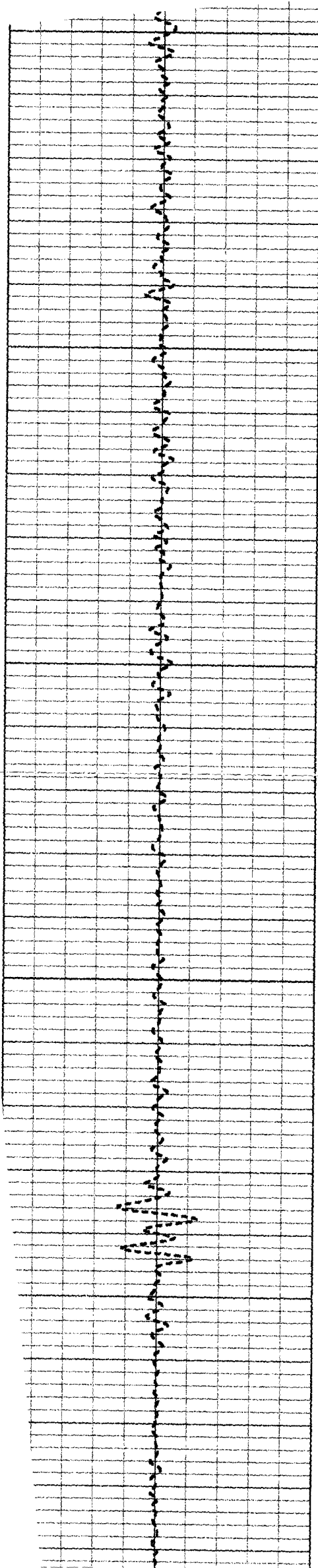
82.5

950

82.3

82.5





1000

82.5

82.4

82.4

1050

82.4

82.5

1100

82.6

82.6

82.7

1150

82.8

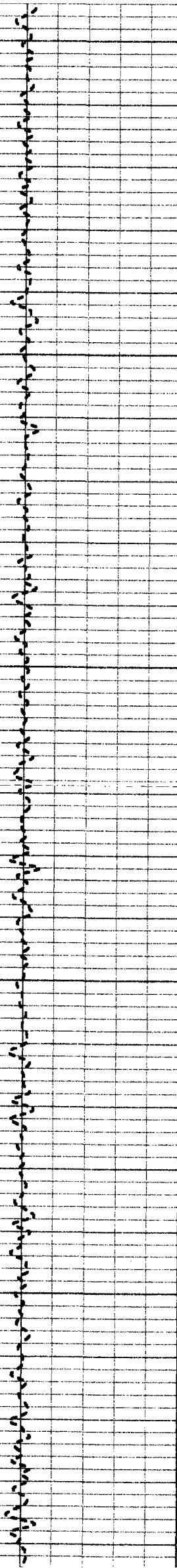
83.0

1200

83.0

83.2

83.2



1250

83.4

83.4

1300

83.5

83.6

83.7

1350

83.8

84.0

1400

84.1

84.1

84.2

1450

84.3

84.4

1500

84.5

84.5

84.5

1550

84.6

84.7

1600

84.9

85.4

86.2

1650

85.3

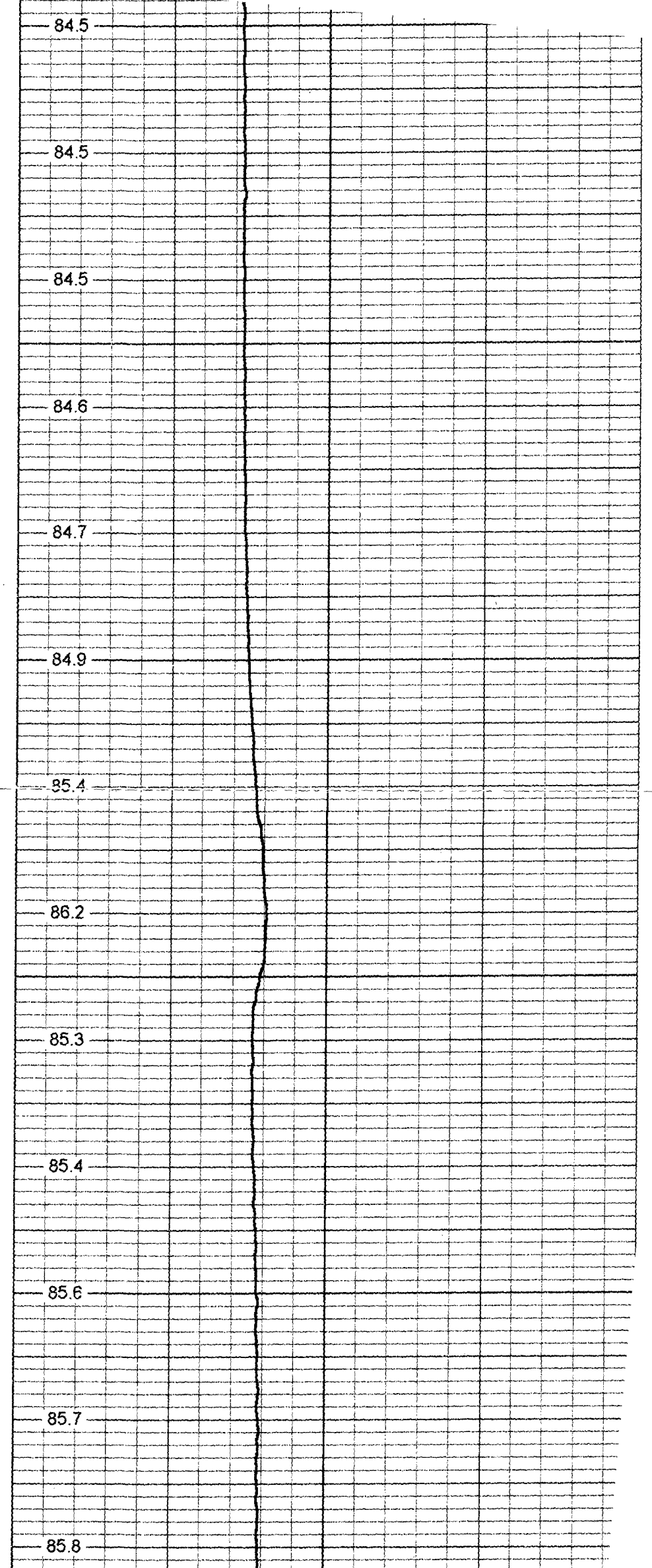
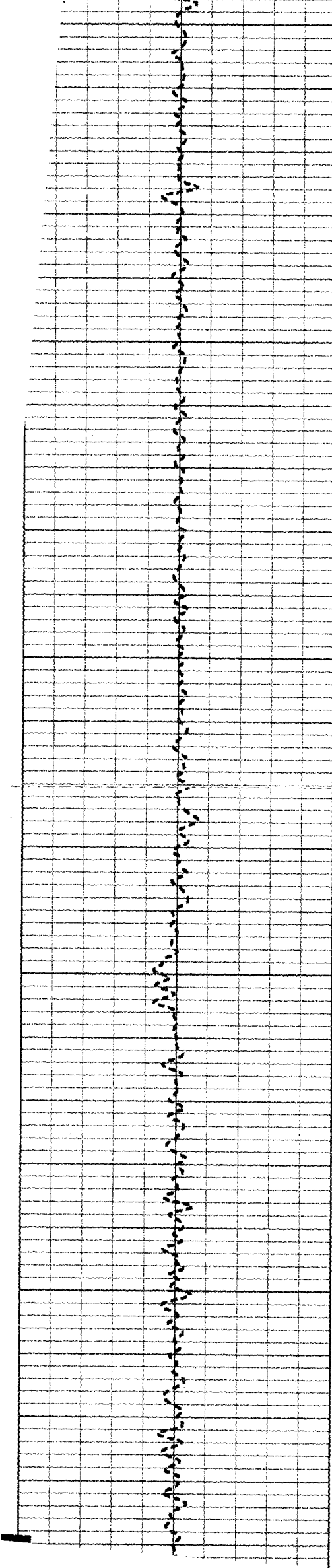
85.4

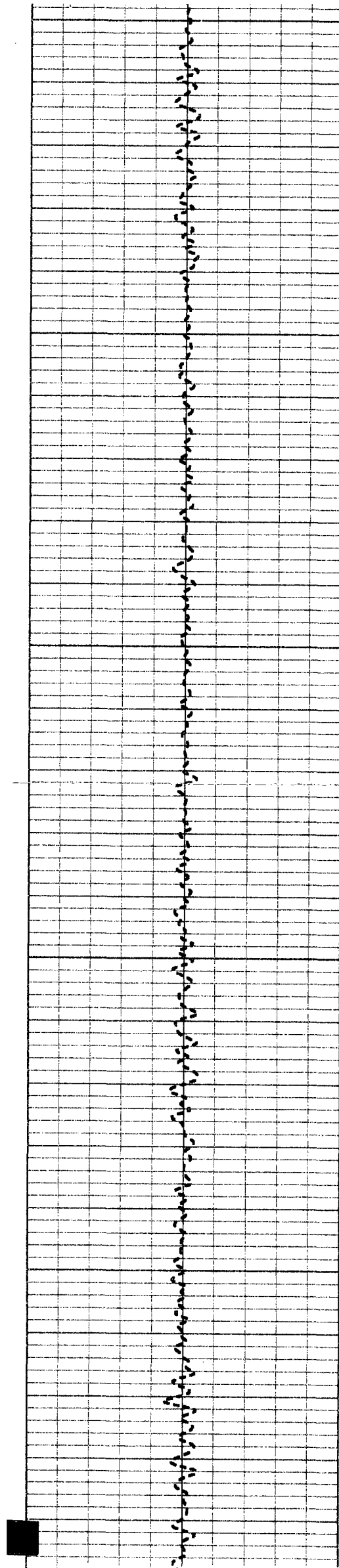
1700

85.6

85.7

85.8





1750

85.8

85.9

1800

86.1

86.3

86.4

1850

86.5

86.7

1900

86.7

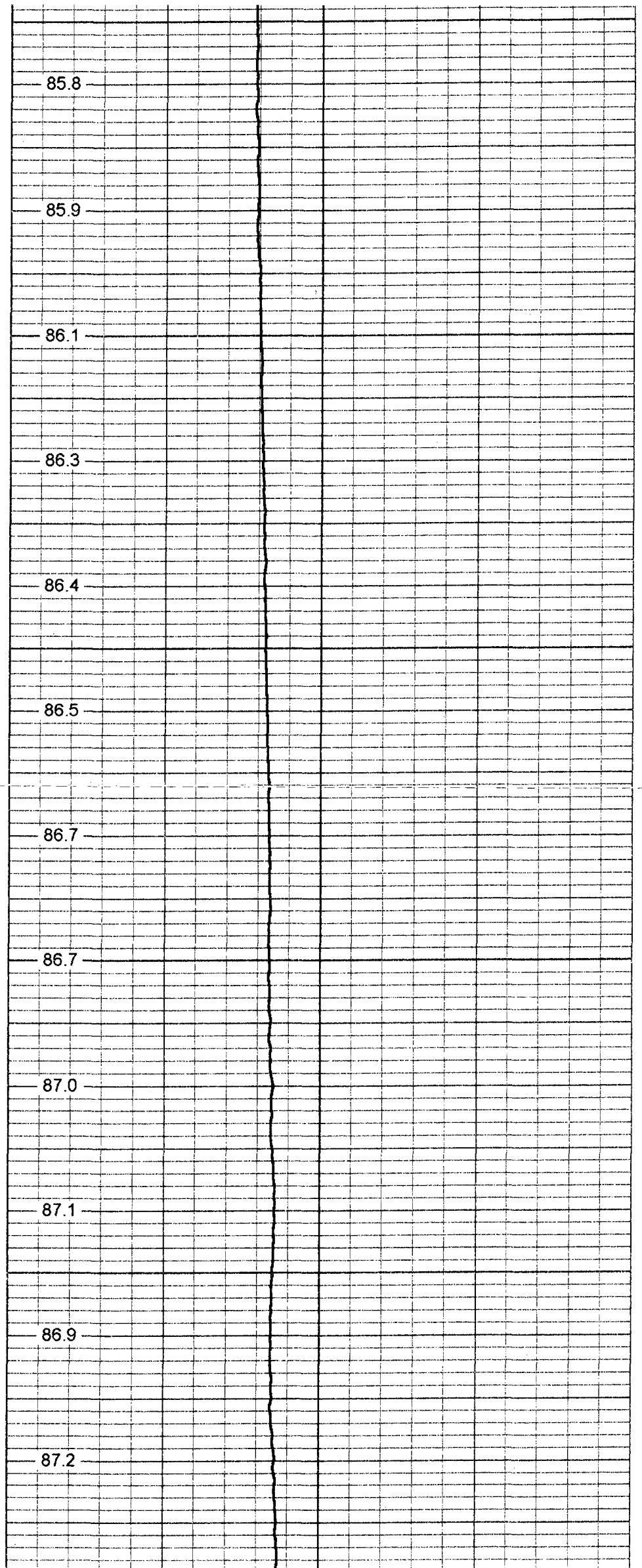
87.0

87.1

1950

86.9

87.2



2000

87.3

87.1

87.4

2050

87.5

87.4

2100

87.4

87.5

87.6

2150

87.7

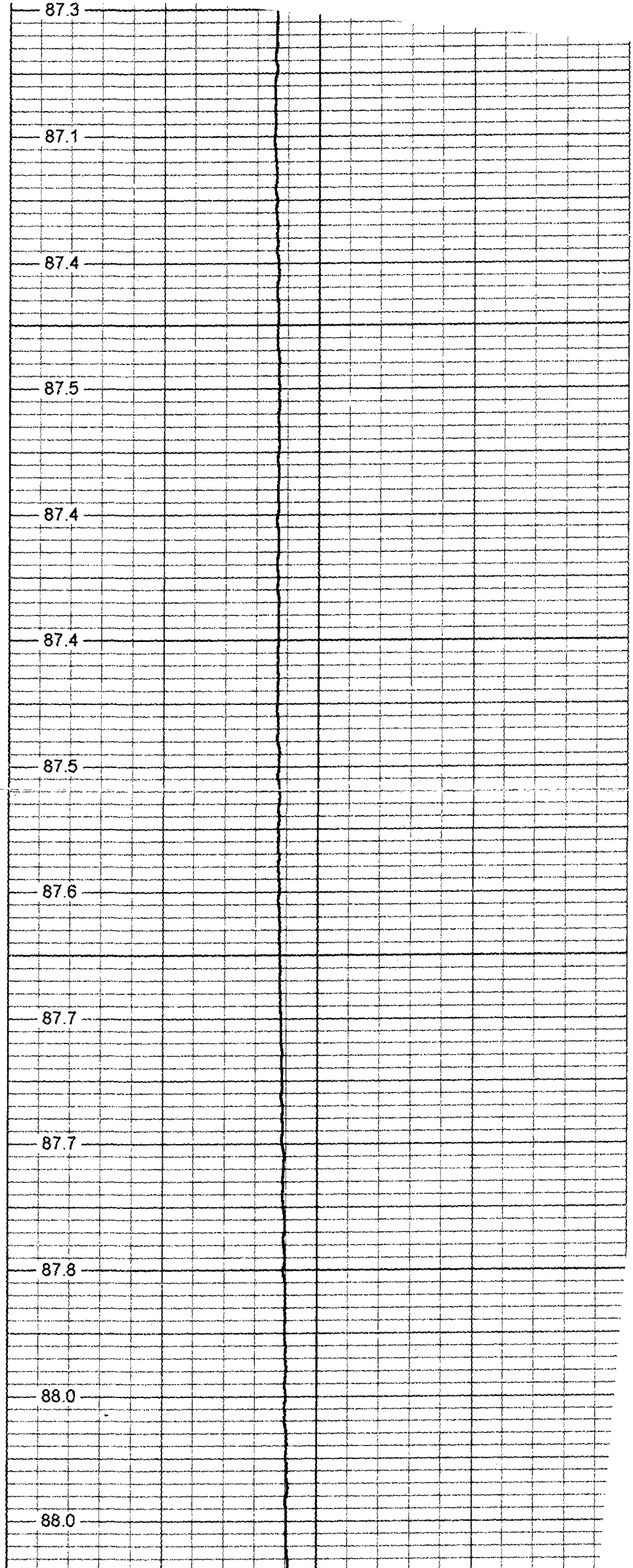
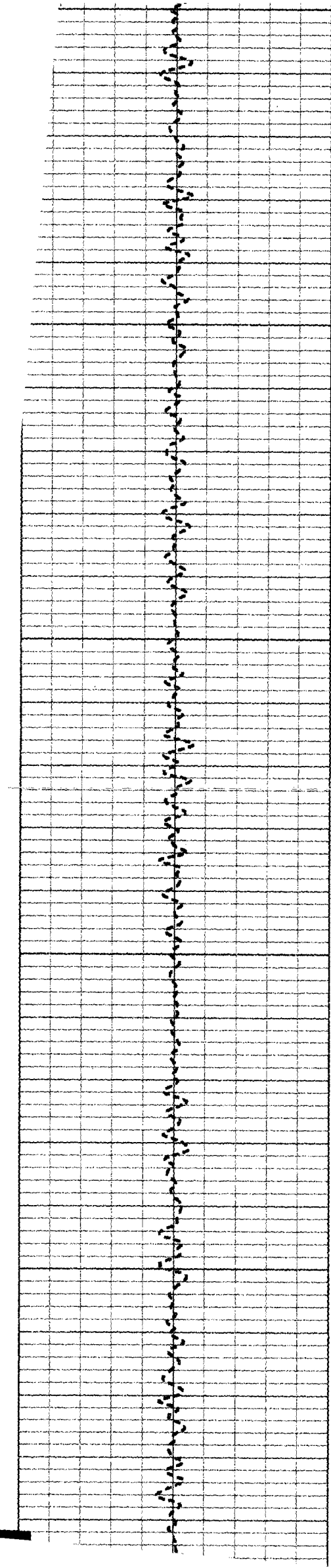
87.7

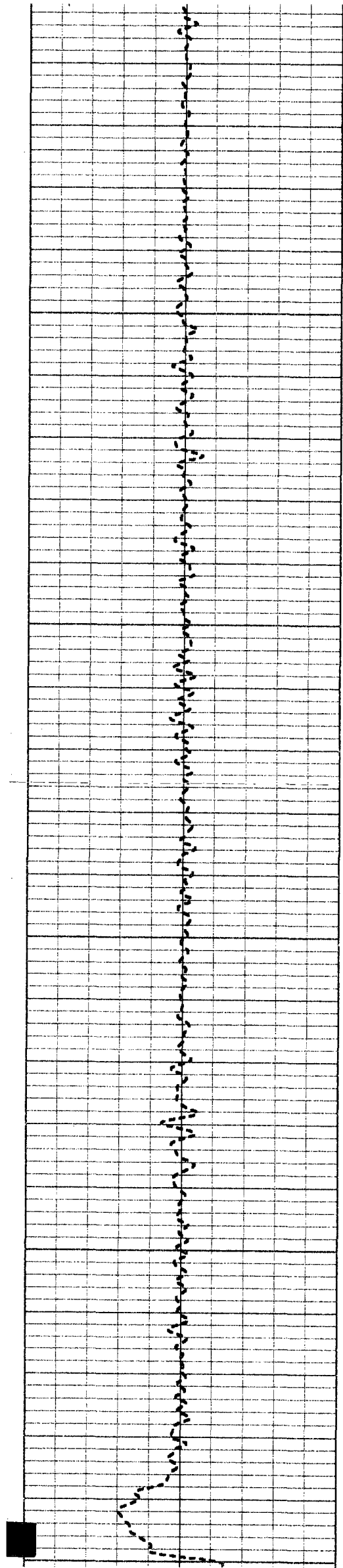
2200

87.8

88.0

88.0





2300

2350

2400

2450

2500

88.2

88.2

88.0

88.2

88.2

88.4

88.6

89.0

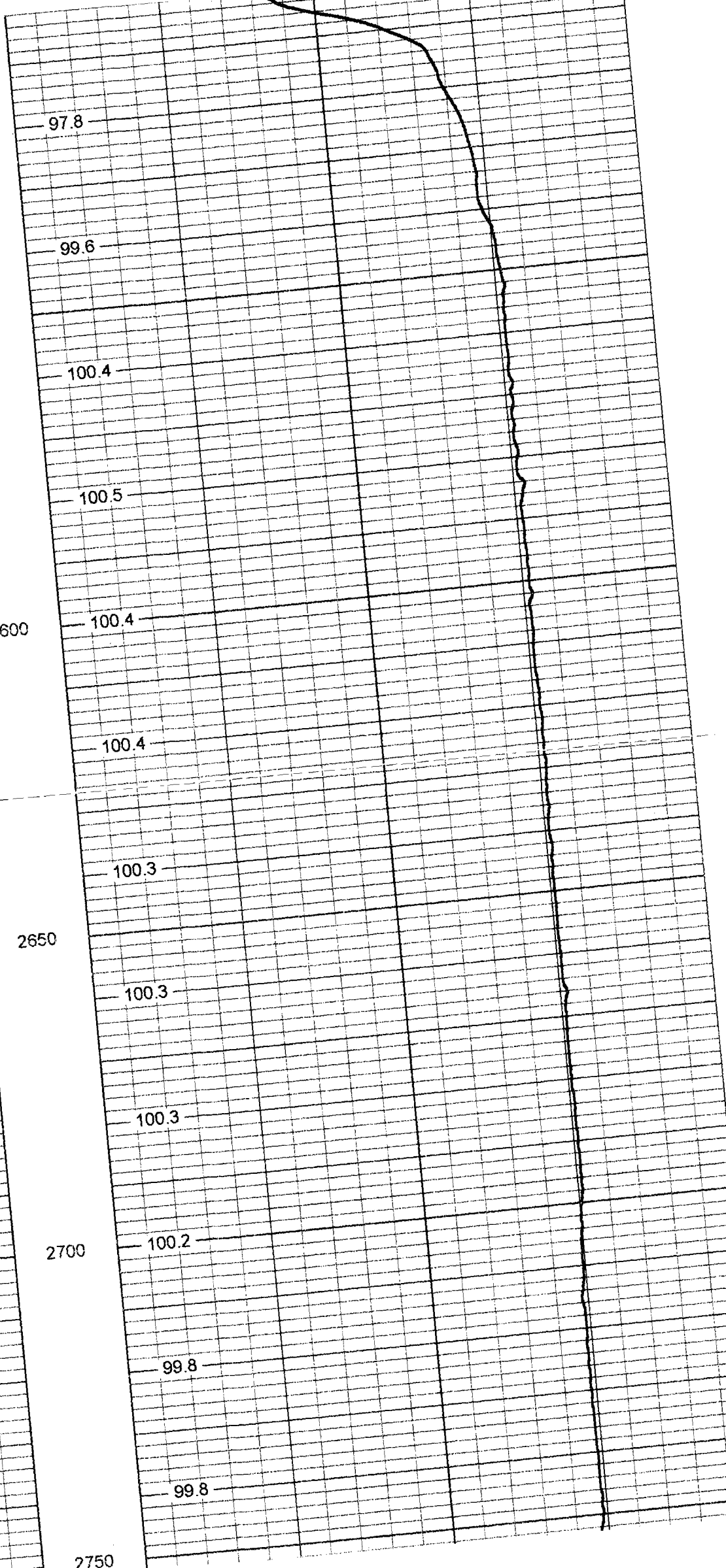
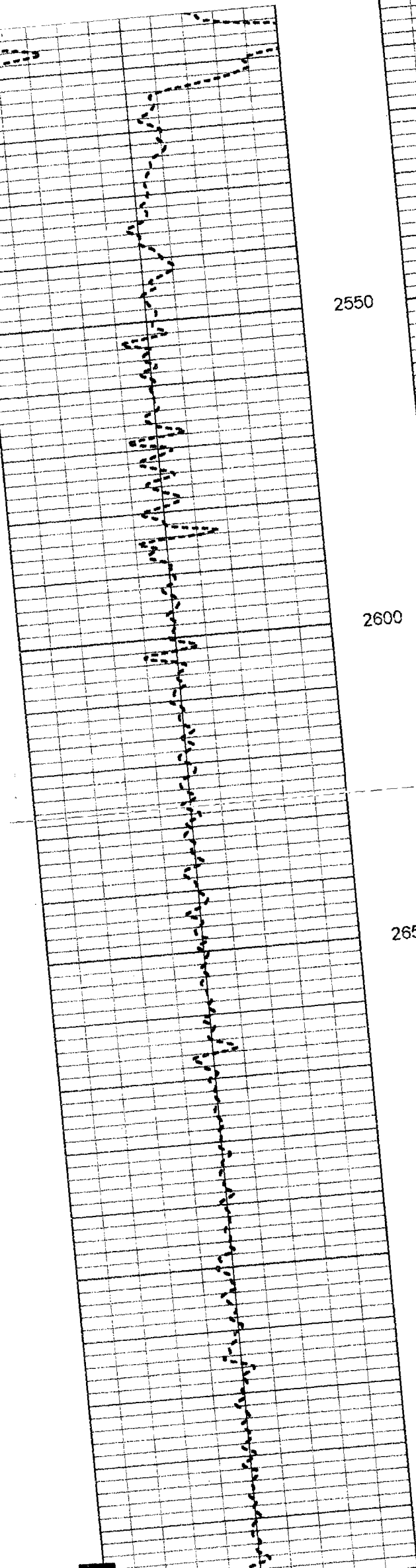
89.2

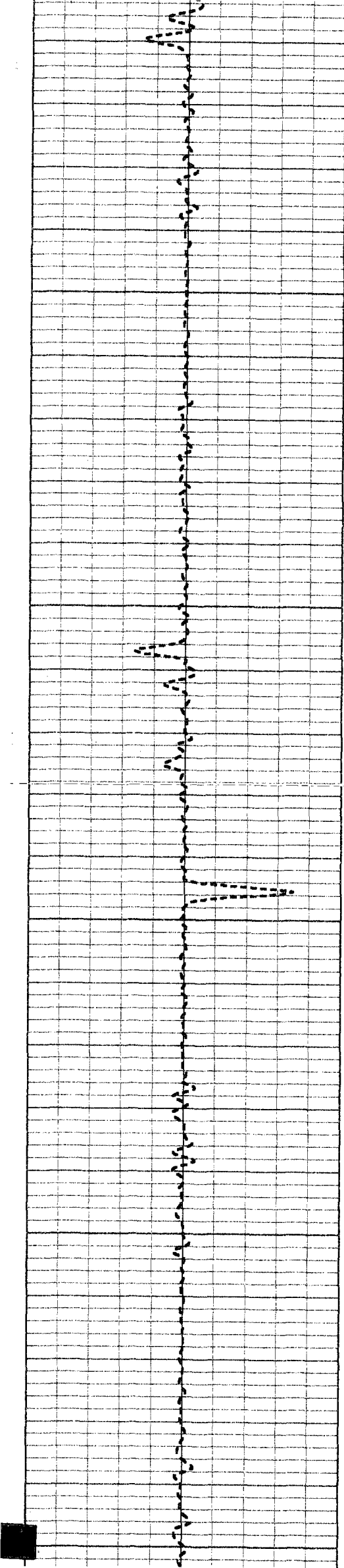
89.2

89.2

89.3

85.9





2800

2850

2900

2950

3000

99.3

99.1

99.0

98.9

98.6

98.1

97.8

99.0

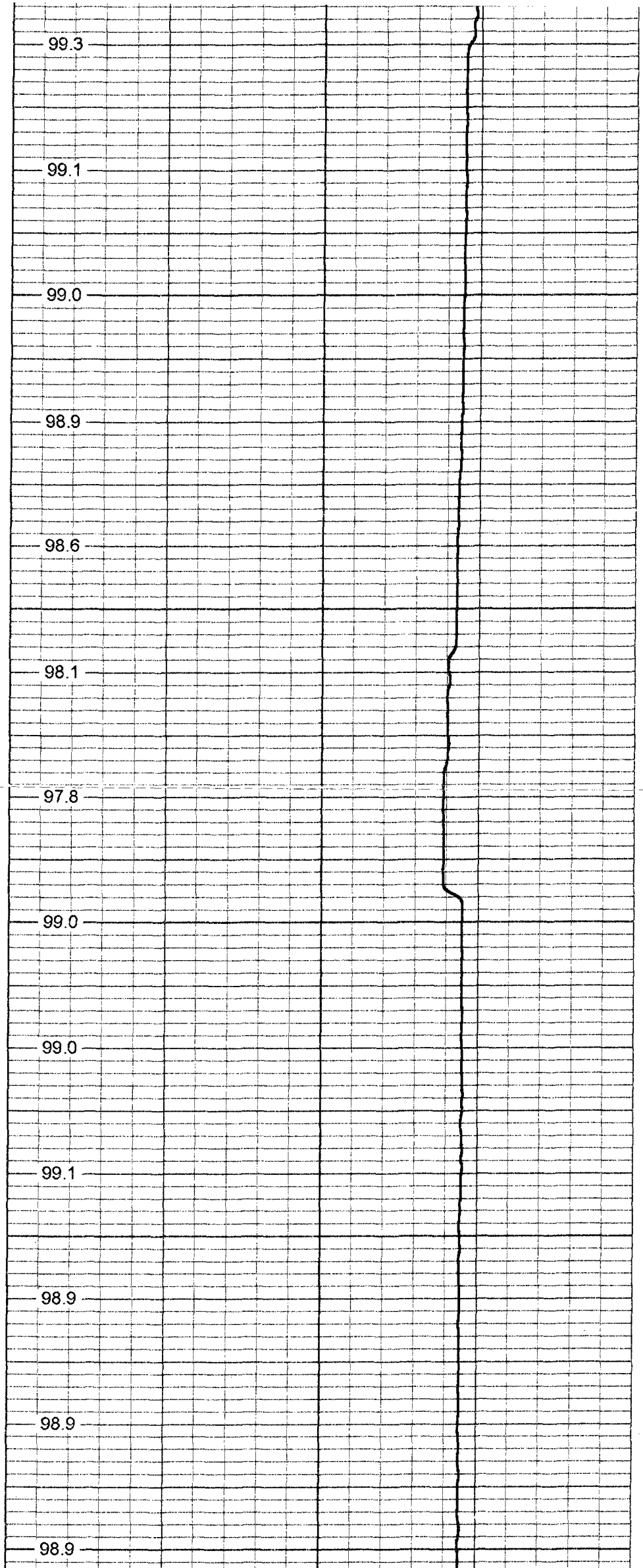
99.0

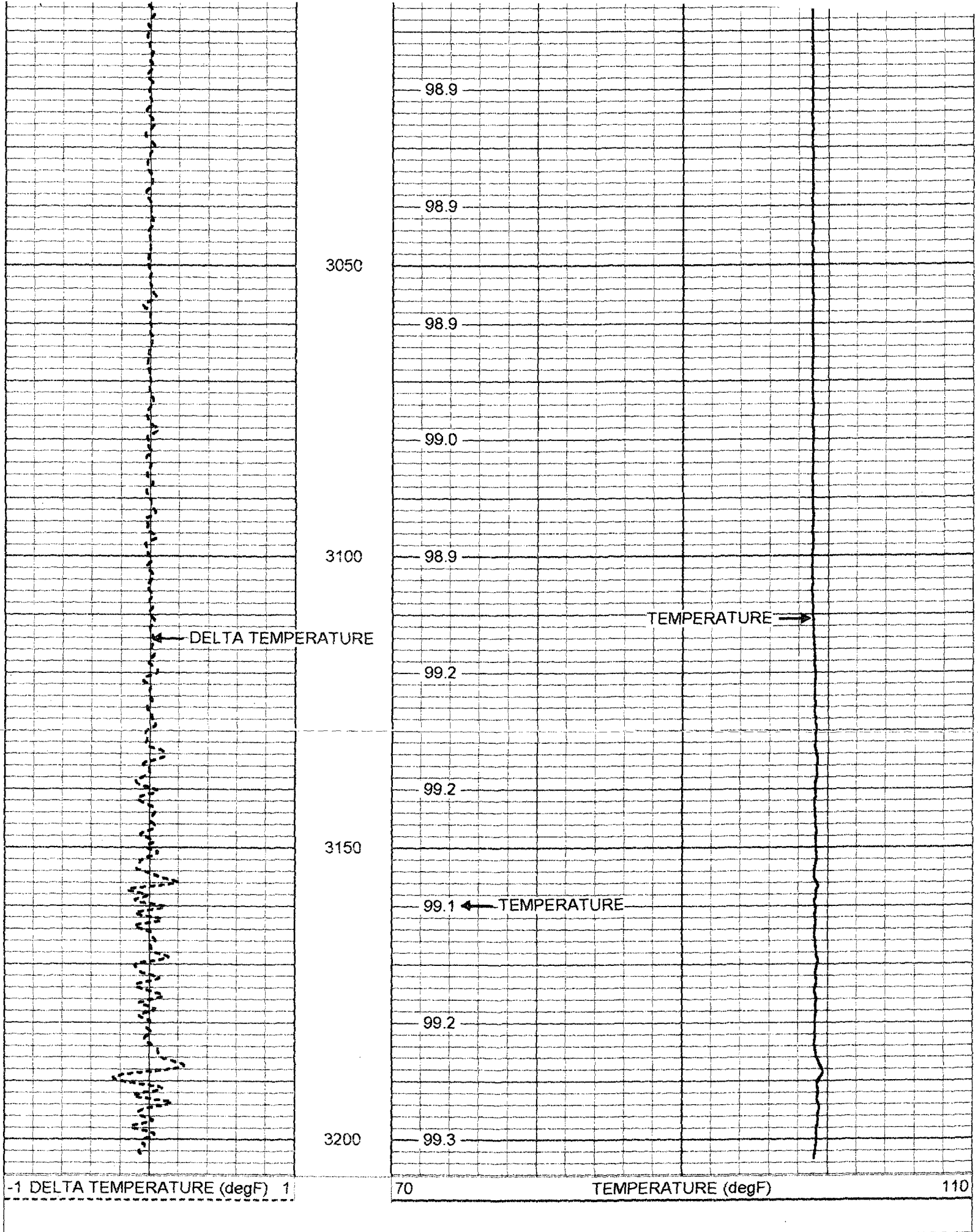
99.1

98.9

98.9

98.9





Temperature Calibration Report

Serial Number: 954
 Tool Model: RTS
 Performed: Wed Feb 28 14:27:36 2001

Point #	Reading	Reference
1	338.011 cns	34 degF

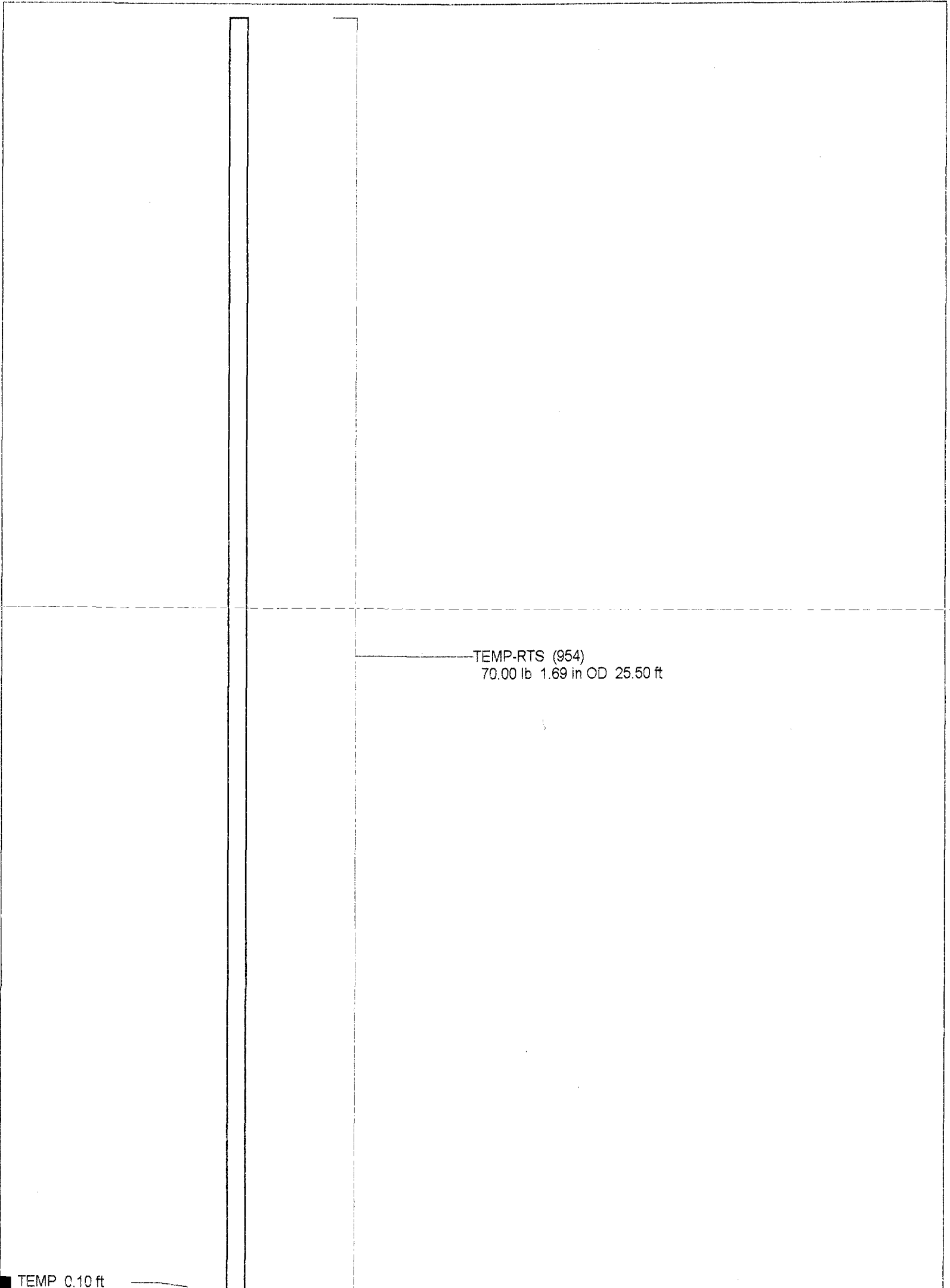
2
3

789.31
1553.28

cps
cps

78
152

degr
degF



TEMP-RTS (954)
70.00 lb 1.69 in OD 25.50 ft

TEMP 0.10 ft

Dataset:	run/pass:
Total Length:	25.50 ft
Total Weight:	70.00 lb
O.D.	1.69 in