



HIGH RESOLUTION TEMPERATURE LOG
869122

Company **HAZEN & SAWYER**
Well **CONCENTRATE #1**
Field **COOPER CITY**
County **BROWARD** State **FLORIDA**
Location
Other Services
RTS

Date	1-JUNE-2001	Permanent Datum	PAD	Elevation	
Run Number	MIT 2001	Log Measured From	PAD		
Depth Driller	3410'	Drilling Measured From	PAD		
Depth Logger	3410'				
Bottom Logged Interval	3410'				
Top Log Interval	2900'				
Open Hole Size	22.5"				
Type Fluid	WATER				
Density / Viscosity	NA				
Max Recorded Temp.	79 DEGF.				
Estimated Cement Top	NA				
Time Well Ready	ON ARRIVAL				
Time Logger on Bottom	00:00				
Equipment Number	107 ETM				
Location	FT. MYERS				
Recorded By	LEE				
Witnessed By	J. WHEATLY				

<<< Fold Here >>>

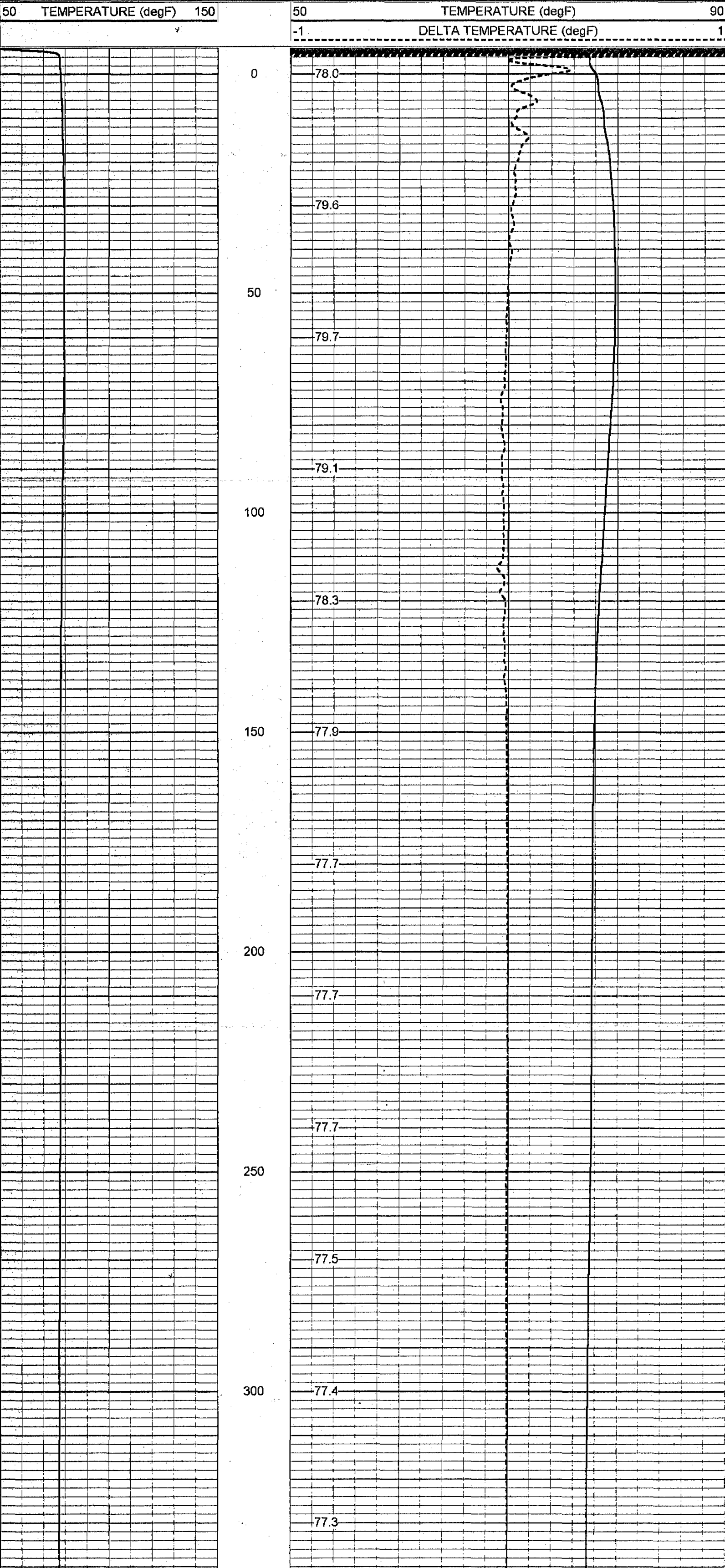
All interpretations are opinions based on inferences from electrical or other measurements and we cannot and do not guarantee the accuracy or correctness of any interpretation, and we shall not, except in the case of gross or willful negligence on our part, be liable or responsible for any loss, costs, damages, or expenses incurred or sustained by anyone resulting from any interpretation made by any of our officers, agents or employees. These interpretations are also subject to our general terms and conditions set out in our current Price Schedule.

Comments

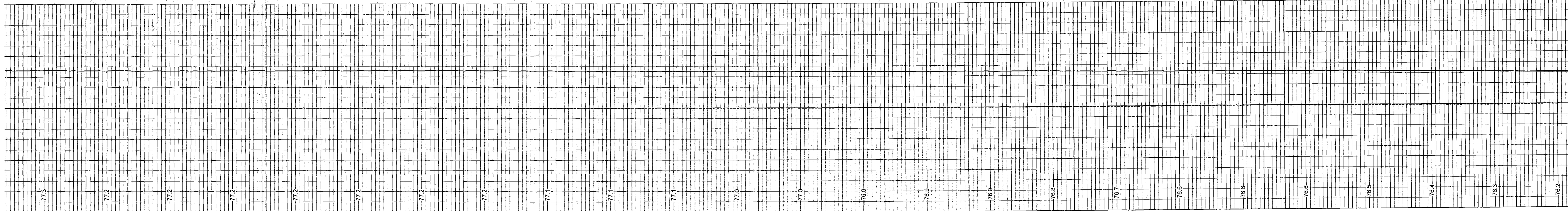


TEMPERATURE

Database File: ccirts.db
Dataset Pathname: TEMP
Presentation Format: temp.prs
Dataset Creation: Fri Jun 01 07:14:15 2001 by Log VER_5.4
Charted by: Depth in Feet scaled 1:240



2



350

400

450

500

550

600

650

700

750

800

850

900

950

1000

1050

77.3

77.2

77.2

77.2

77.2

77.2

77.2

77.2

77.1

77.1

77.1

77.0

77.0

76.9

76.9

76.9

76.8

76.7

76.6

76.6

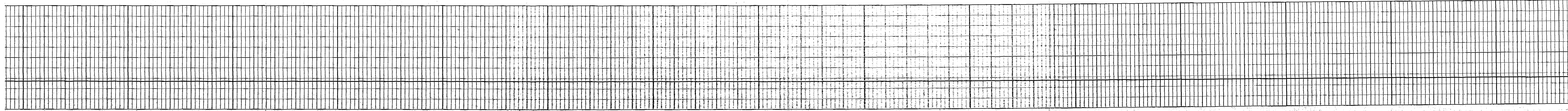
76.6

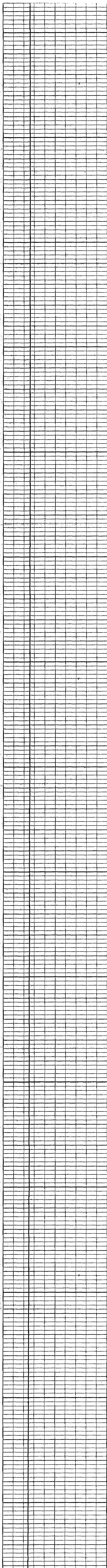
76.5

76.4

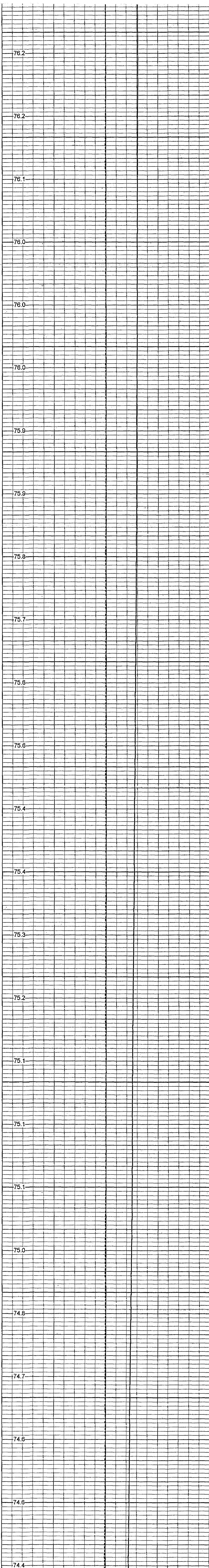
76.3

76.2



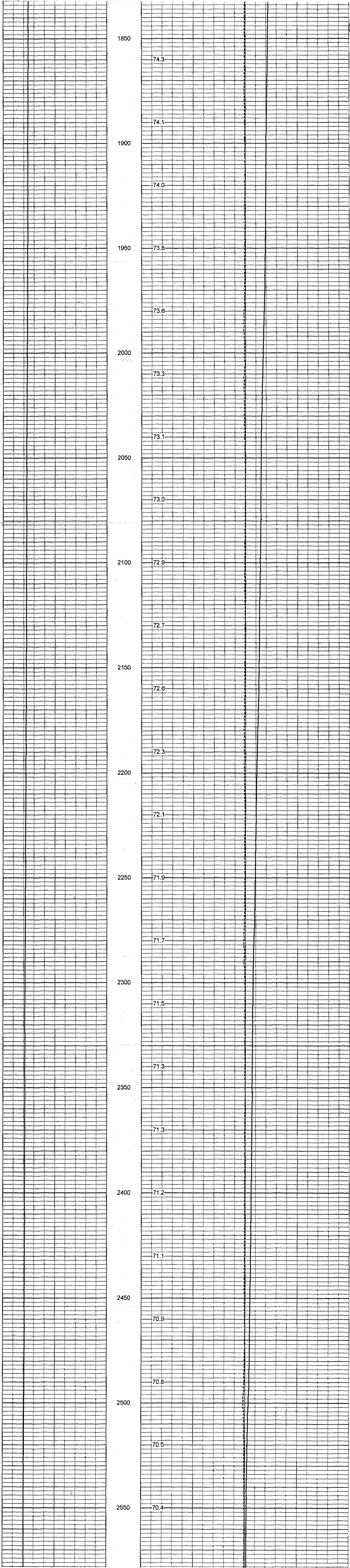


1100
1150
1200
1250
1300
1350
1400
1450
1500
1550
1600
1650
1700
1750
1800

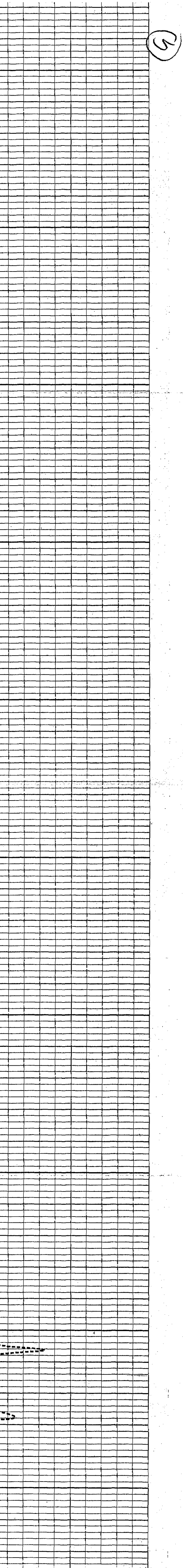
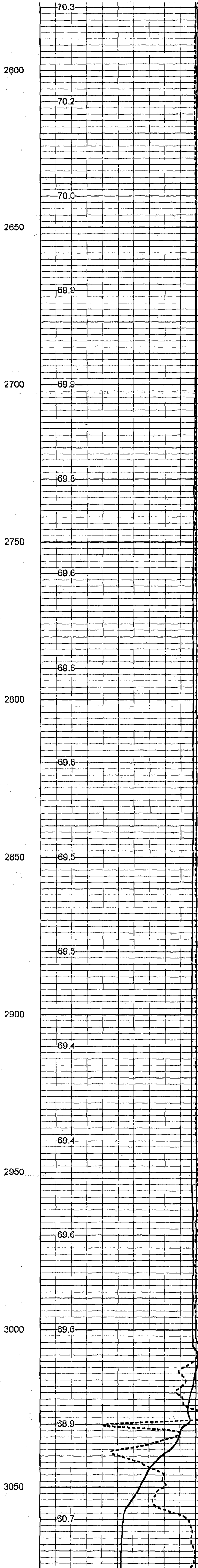
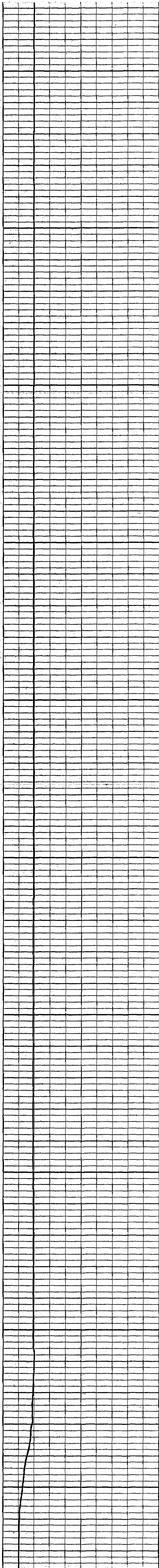


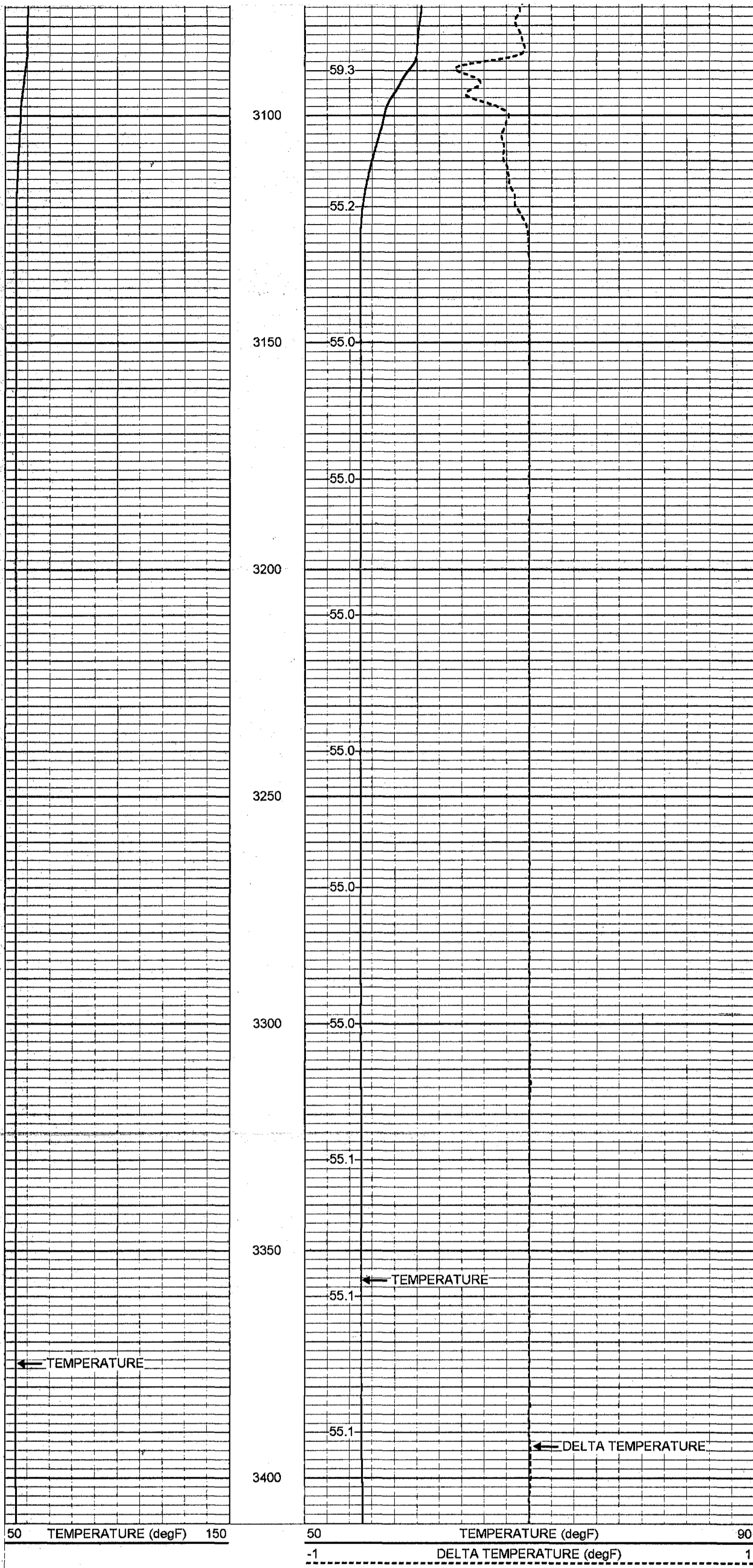
76.2
76.2
76.1
76.0
76.0
76.0
75.9
75.9
75.8
75.7
75.6
75.6
75.4
75.4
75.3
75.2
75.1
75.1
75.1
75.0
74.8
74.7
74.6
74.6
74.4

(H)



5





Temperature Calibration Report

Serial Number: 10
 Tool Model: MLS
 Performed: Wed May 23 03:51:46 2001

Point #	Reading		Reference	
1	280	cps	35	degF
2	518	cps	85	degF
3	900	cps	155	degF

