



# HIGH RESOLUTION TEMPERATURE LOG

869034

Company HAZEN & SAWYER, P.C.  
 Well CONCENTRATE DISPOSAL #1  
 Field COOPER CITY  
 County BROWARD State/Prv FLORIDA

Location  
 Other Services SEE COMMENTS  
 Elevation  
 Permanent Datum PAD  
 Log Measured From PAD  
 Drilling Measured From PAD  
 Date 06-MARCH-2001  
 Run Number THIRTEEN  
 Depth Driller 3410'  
 Depth Logger 3410'  
 Bottom Logged Interval 3410'  
 Top Log Interval CASING  
 Open Hole Size 32.5" 22.5"  
 Type Fluid WATER  
 Density / Viscosity NA  
 Max. Recorded Temp. 83 DEGF.  
 Estimated Cement Top NA  
 Time Well Ready ON ARRIVAL  
 Time Logger on Bottom 00:00  
 Equipment Number 102 FTM  
 Location FT MYERS  
 Recorded By LEE DENISON  
 Witnessed By J. LARGLEY

Borehole Record				Tubing Record			
Run Number	Bit	From	To	Size	Weight	From	To
NINE	40.5"	CASING	2010'				
ELEVEN	12.25"	CASING	3000'				
THIRTEEN	32.5"	CASING	3000'				
THIRTEEN	22.5"	3000'	3410'				

Casing Record		Size	Wgt/ft	Top	Bottom
Surface String	60"	375 W.T.	SURFACE	40'	
Prod. String	50"	500 W.T.	SURFACE	250'	
Production String	42"	375 W.T.	SURFACE	985'	
Liner	34"	375 W.T.	SURFACE	2000'	

<<< Fold Here >>>

All interpretations are opinions based on inferences from electrical, or other measurements and we cannot and do not guarantee the accuracy or correctness of any interpretation, and we shall not, except in the case of gross or willful negligence on our part, be liable or responsible for any loss, costs, damages, or expenses incurred or sustained by anyone resulting from any interpretation made by any of our officers, agents or employees. These interpretations are also subject to our general terms and conditions set out in our current Price Schedule.

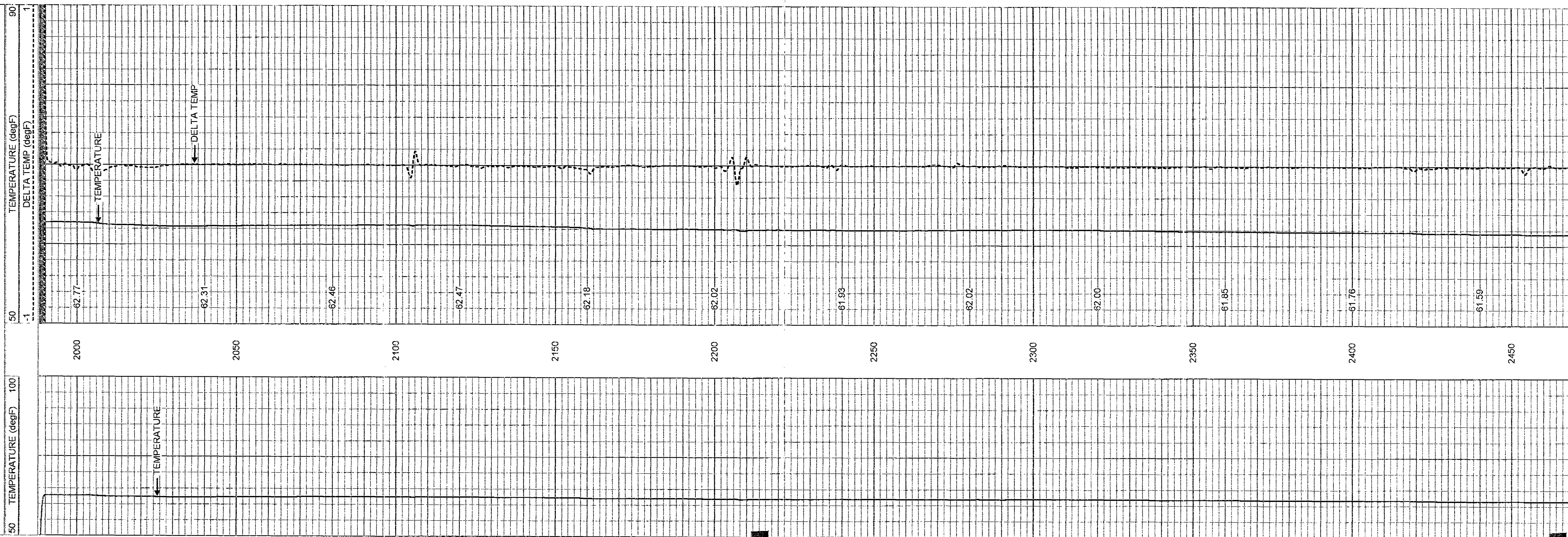
Comments

X-Y CALIPER / GAMMA RAY  
 BOREHOLE  
 32.5" FROM 2000' TO 3000'  
 22.5" FROM 3000' TO 3410'.



# TEMPERATURE

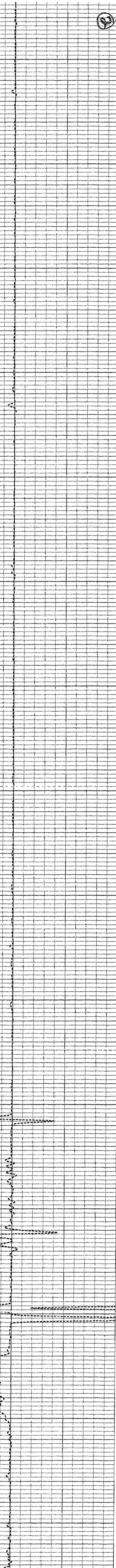
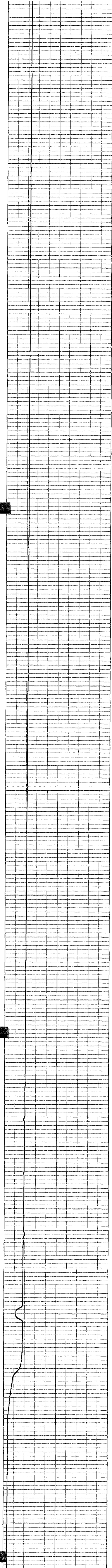
Database File: con1.db  
 Dataset Pathname: run13/passTEMP1  
 Presentation Format: temp.prs  
 Dataset Creation: Tue Mar 06 07:16:45 2001 by LOG VER\_5.4  
 Charted by: Depth in Feet scaled 1:240

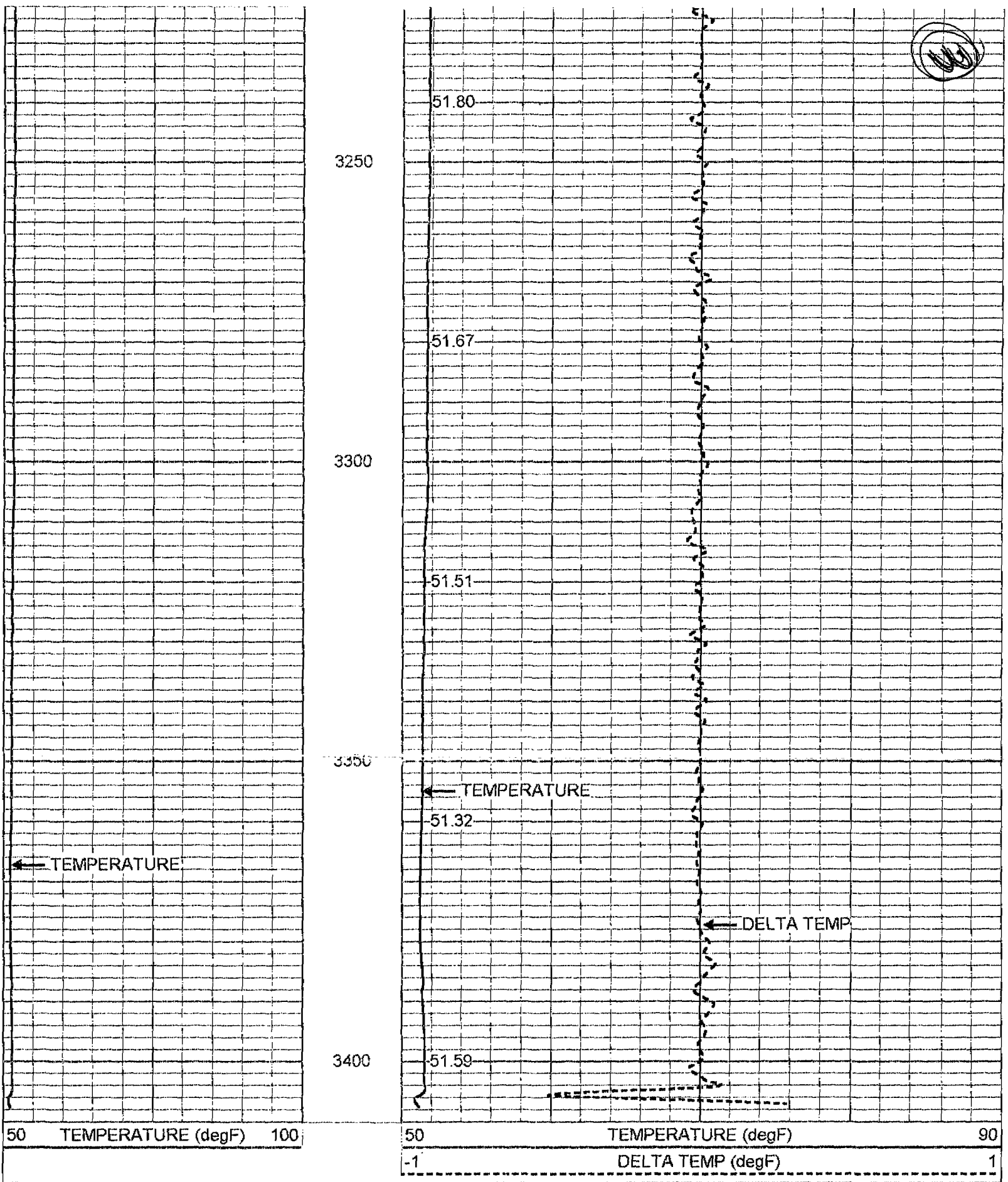




2500  
2550  
2600  
2650  
2700  
2750  
2800  
2850  
2900  
2950  
3000  
3050  
3100  
3150  
3200

61.47  
61.29  
61.22  
61.15  
61.03  
60.86  
60.86  
60.73  
60.65  
60.51  
60.37  
60.19  
59.97  
59.90  
59.50  
59.19  
58.89  
52.05  
51.91





Point #	Reading	Reference
1	300.098 cps	34 degF
2	519.414 cps	95 degF
3	677.215 cps	122.5 degF

