

RECEIVED



APR 13 1998  
**FLUID CONDUCTIVITY  
 TEMPERATURE  
 LOG**

Company: LEE COUNTY UTILITIES DEPT.  
 Well: IW-1  
 Field: FORT MYERS BEACH WWTP  
 Country: LEE State/Province: FLORIDA  
 Location: LAT 26° 29' 30" LONG 81° 56' 00"

Permanent Datum: GL  
 Log Measured From: PAD  
 Drilling Measured From: PAD  
 Elevation: 7'  
 Other Services: SEE REMARKS  
 Elevation: K.B. N/A D.F. 13' G.L. 7'

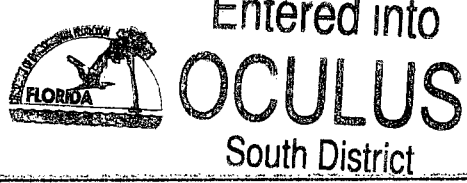
Date	26+27-MAR-98		
Run Number	SEVEN		
Depth Driller	3036		
Depth Logger	3003		
Bottom Logged Interval	3000'		
Top Log Interval	1780'		
Casing Driller	26" @ 1796'		
Casing Logger	1798'		
Bit Size	12.25"		
Type Fluid in Hole	WATER		
Density / Viscosity	N/A		
PH / Fluid Loss	N/A		
Source of Sample	N/A		
Rm @ Meas. Temp	0.144 @ 75°F		
Rmf @ Meas. Temp	N/A		
Rmc @ Meas. Temp	N/A		
Source of Rmf / Rmc	N/A		
Rm @ BHT	N/A		
Time Circulation Stopped	N/A		
Time Logger on Bottom	VARRIES - 4 RUNS		
Maximum Recorded Temperature	92°F		
Equipment Number	103		
Location	FORT MYERS		
Recorded By	P. McHUGH	E.X. CALLAHAN	S. MILLER
Witnessed By	M. BEAVERSON	D. McNABB	DYNAMIC LOGS

<<< Fold Here >>>

All interpretations are opinions based on inferences from electrical and other measurements and we cannot and do not guarantee the accuracy or correctness of any interpretation, and we shall not, except in the case of gross or willful negligence on our part, be liable or responsible for any loss, costs, damages, or expenses incurred or sustained by anyone resulting from any interpretation made by any of our officers, agents or employees. These interpretations are also subject to our general terms and conditions set out in our current Price Schedule.

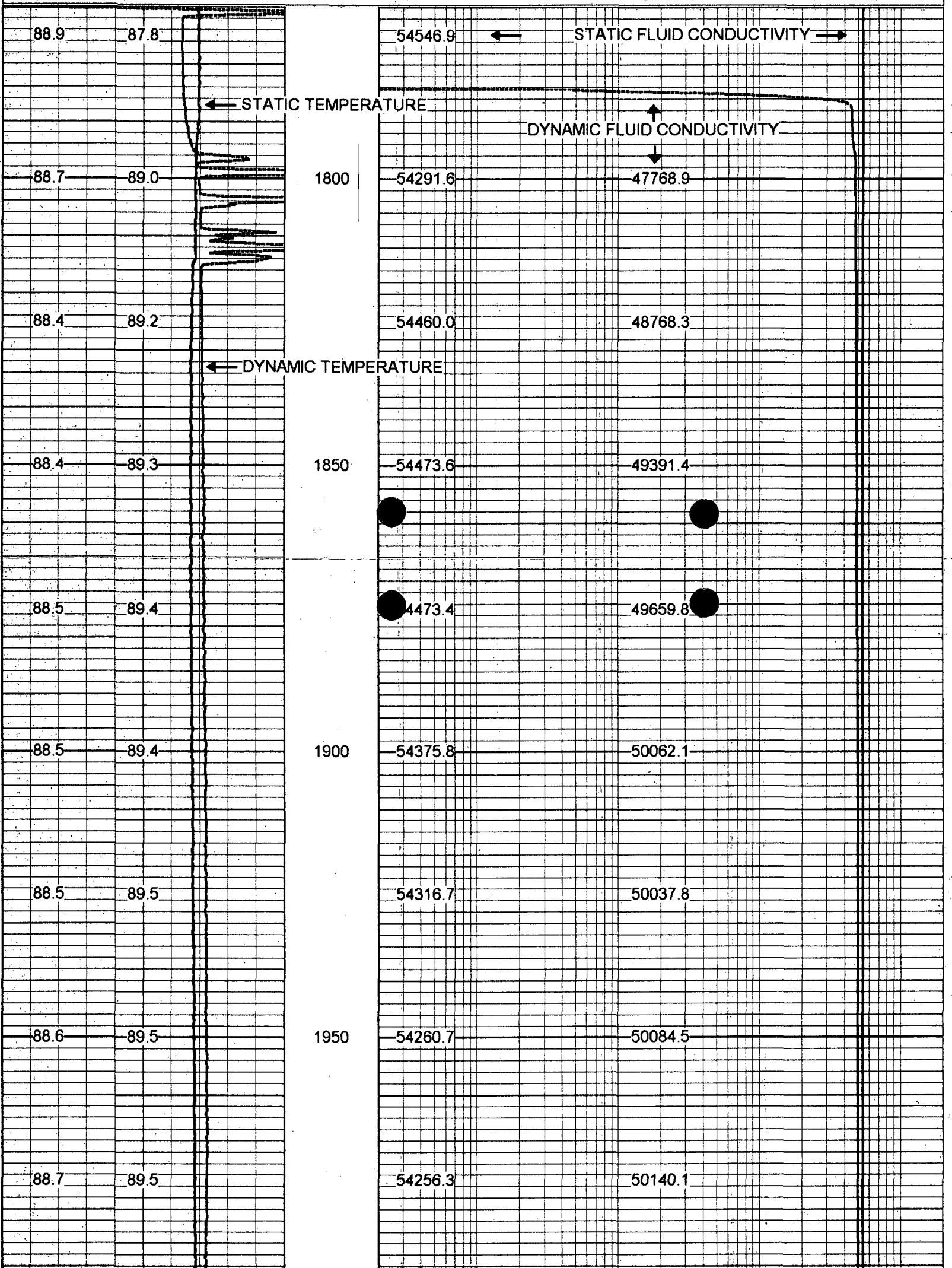
Comments

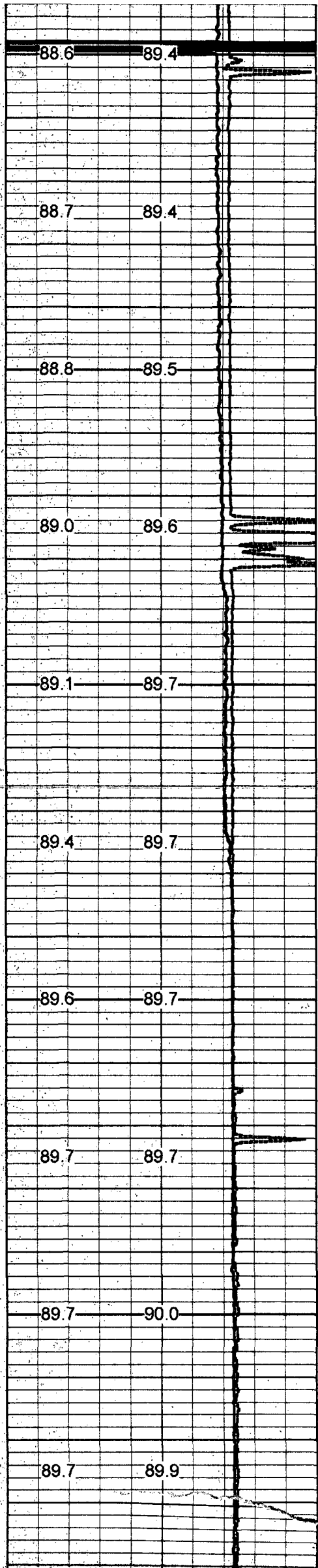
DIL/LL3/SP, BHC/VDL, X-Y CALIPER, GAMMA RAY  
 STATIC FLUID CONDUCTIVITY TEMPERATURE LOG RUN IN 3 SECTIONS THRU  
 DRILL PIPE DUE TO HOLE CONDITIONS.  
 DYNAMIC LOG RUN IN SINGLE PASS 3/27/98.



Database File: fmb/w.db  
 Dataset Pathname: run8/pass99  
 Presentation Format: frttmpmg.prs  
 Dataset Creation: Tue Apr 07 14:38:12 1998  
 Charted by: Depth in Feet scaled 1:240

75	STATIC TEMPERATURE (degF)	95	20	STATIC FLUID CONDUCTIVITY	200000
7	DYNAMIC TEMPERATURE (degF)	5	20	DYNAMIC FLUID CONDUCTIVITY	200000





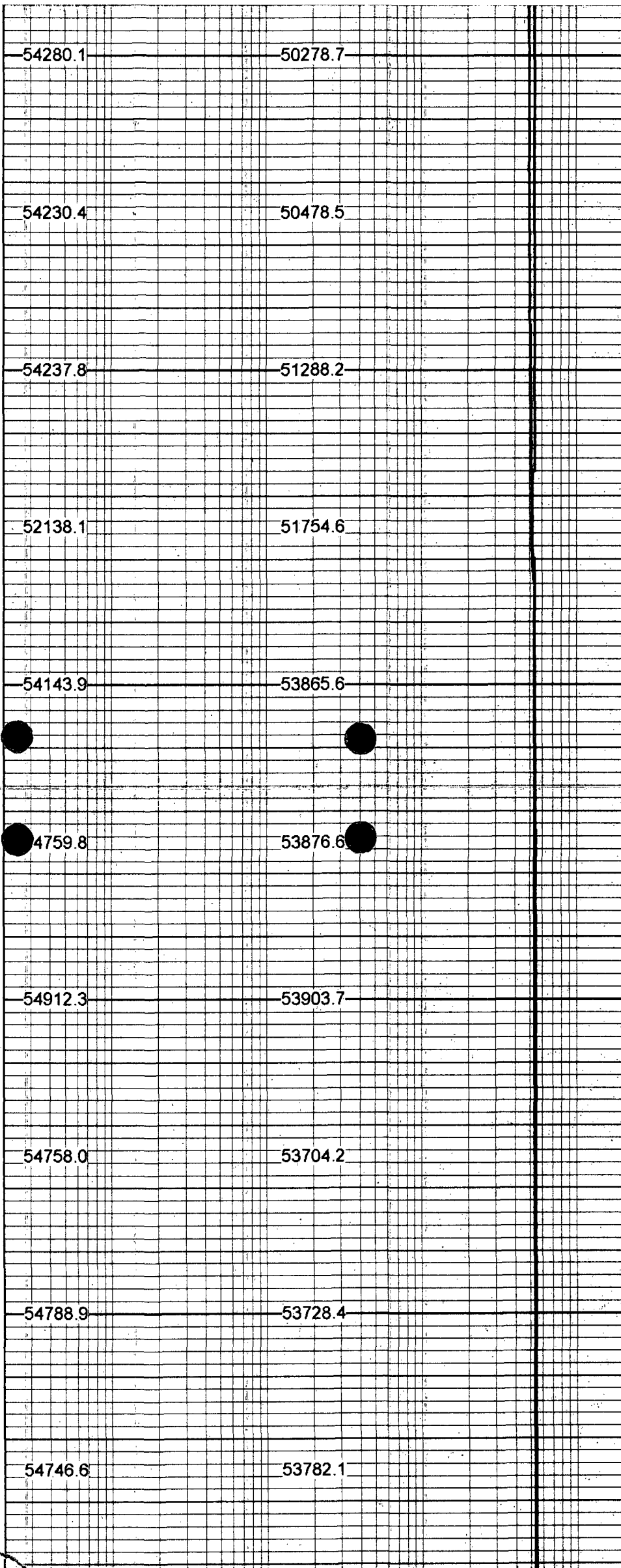
2000

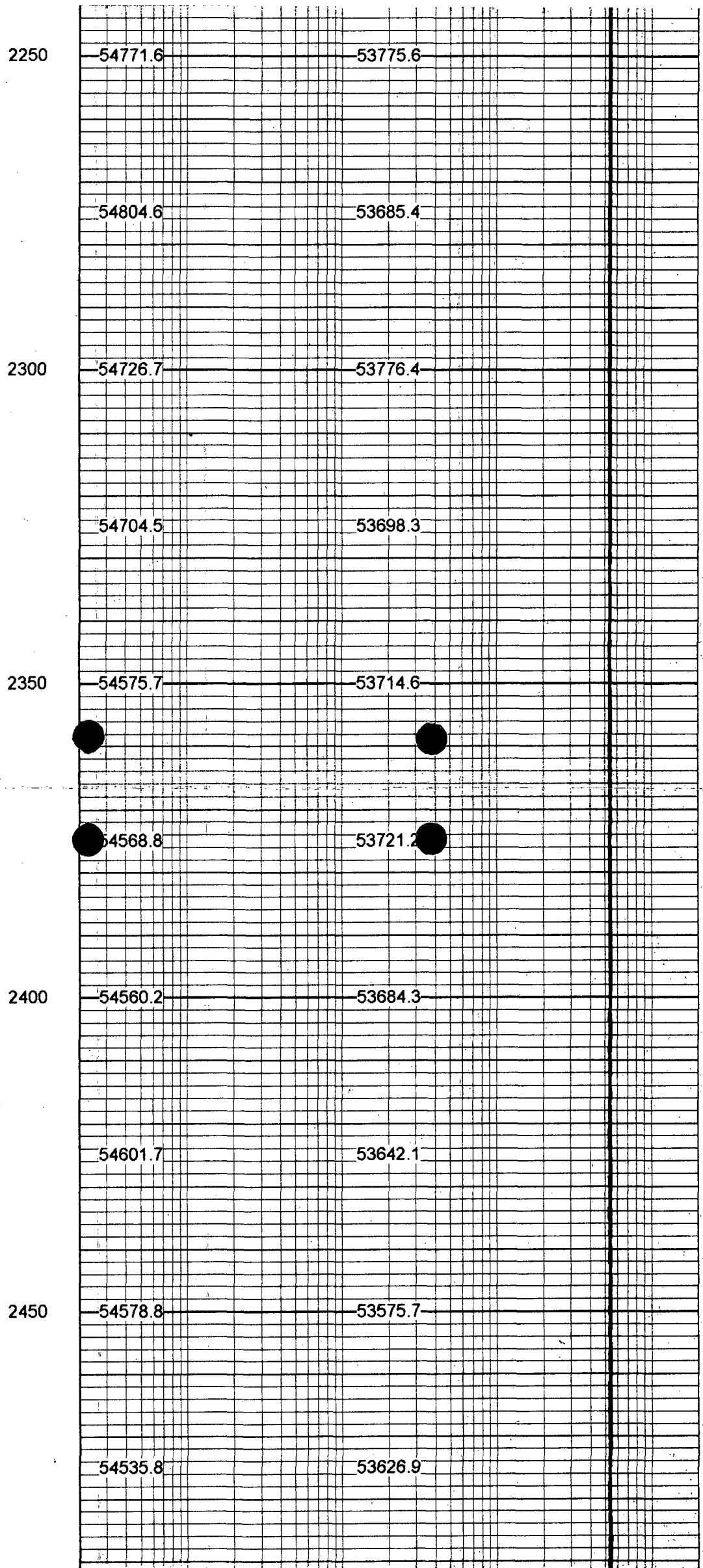
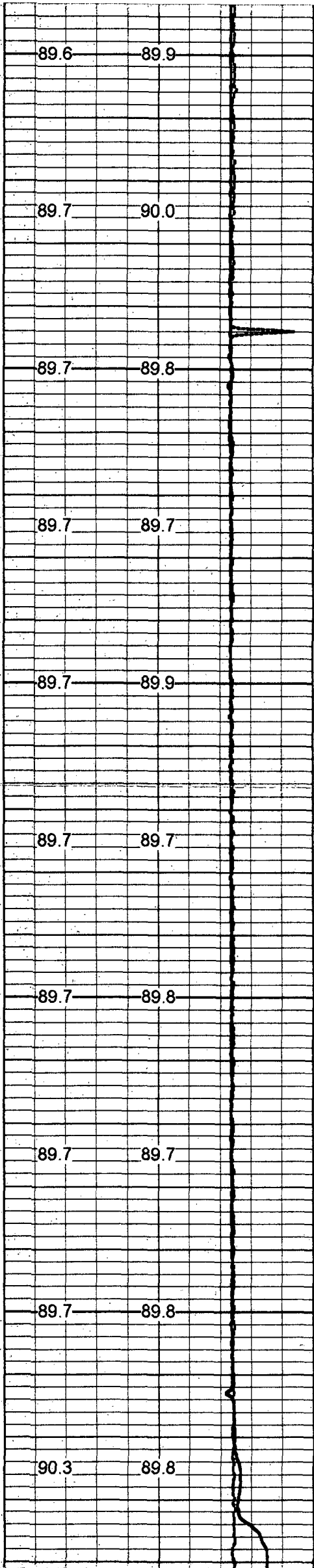
2050

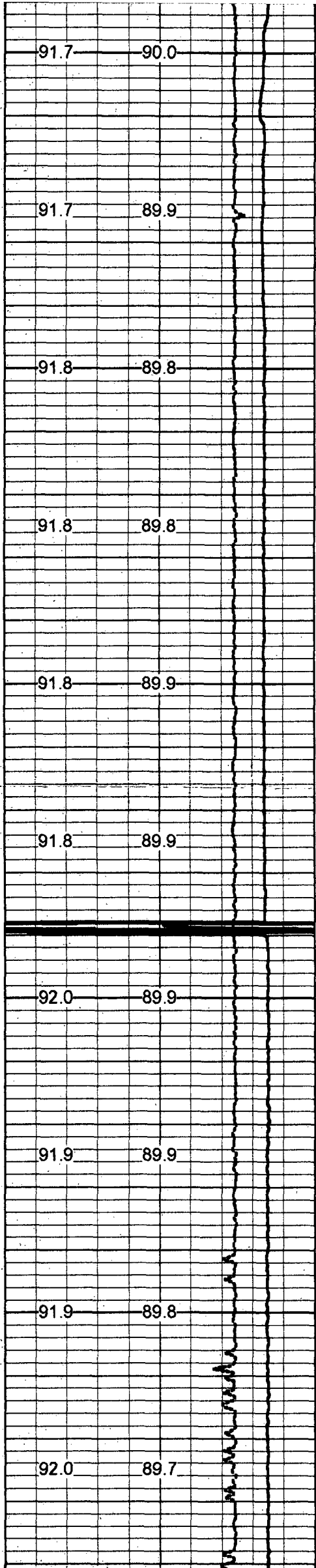
2100

2150

2200







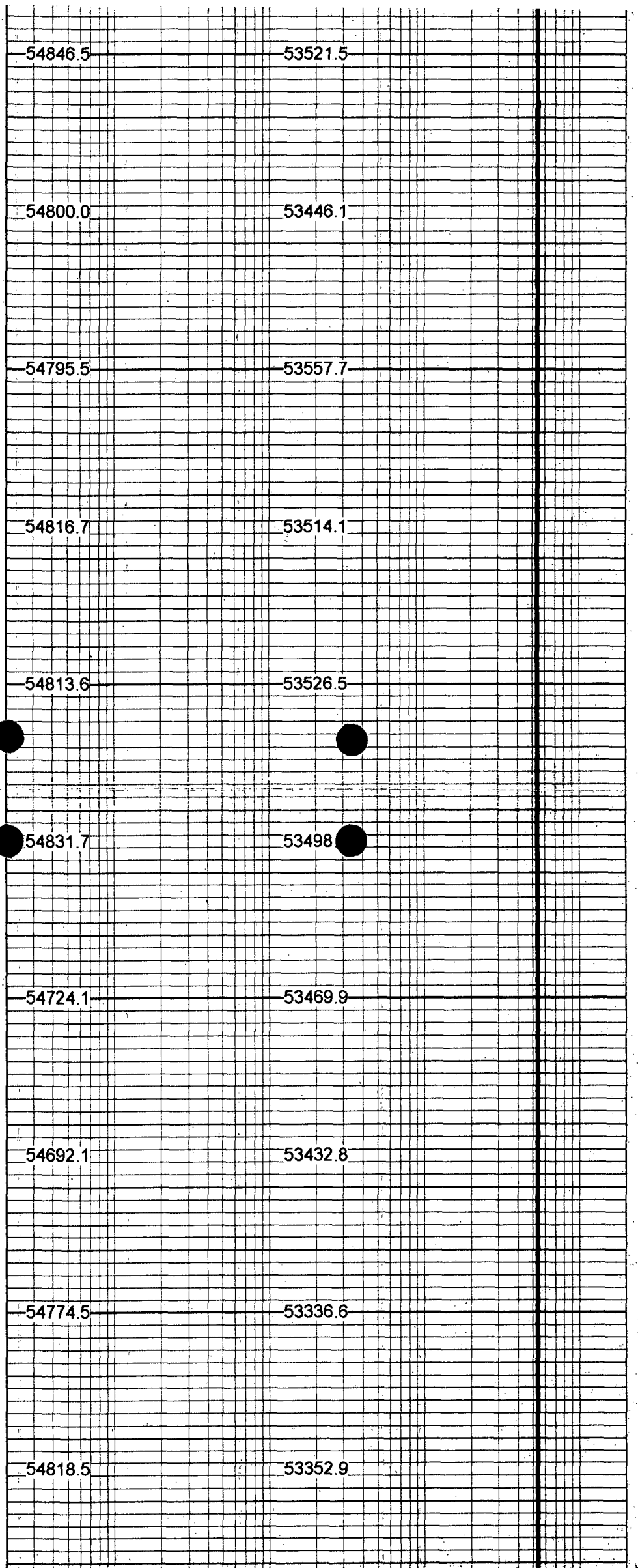
2500

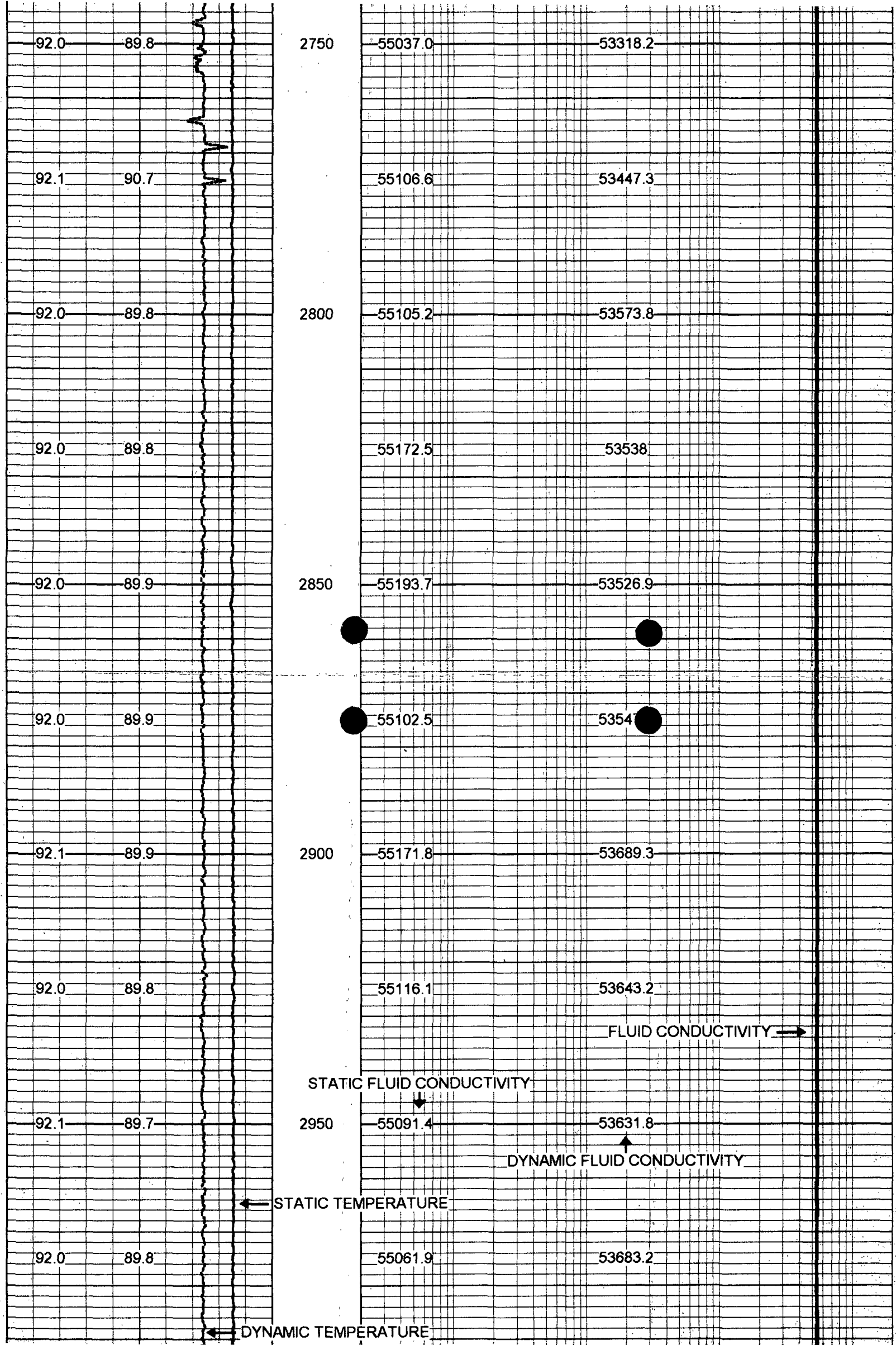
2550

2600

2650

2700





92.0	89.9	3000	55257.9	53560.5
75 STATIC TEMPERATURE (degF) 95			20	STATIC FLUID CONDUCTIVITY 200000
7 DYNAMIC TEMPERATURE (degF) 5			20	DYNAMIC FLUID CONDUCTIVITY 200000

