



FLUID CONDUCTIVITY TEMPERATURE LOG

Company
Well
Field
Country
State/Prv

Company **LEE COUNTY UTILITIES DEPT.**
Well **IW-1**
Field **FORT MYERS BEACH WWTP**
Country **LEE** State/Province **FLORIDA**

LAT 26° 29' 30"
LONG 81° 56' 00"

Elevation 7'

Other Services
SEE
REMARKS

Elevation

GL
PAD
PAD

Elevation 7'

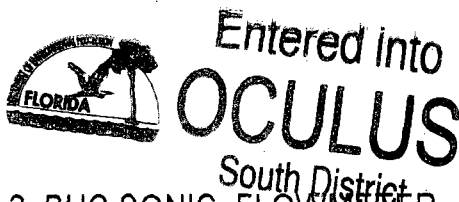
K.B. N/A
D.F. 13'
G.L. 7'

Date	30-JAN-98		
Run Number	THREE		
Depth Driller	1900'		
Depth Logger	1900'		
Bottom Logged Interval	1900'		
Top Log Interval	360'		
Casing Driller	398'		
Casing Logger	398'		
Bit Size	12.25"		
Type Fluid in Hole	WATER		
Density / Viscosity	N/A		
pH / Fluid Loss	N/A		
Source of Sample	N/A		
Rm @ Meas. Temp			
Rmt @ Meas. Temp			
Rmc @ Meas. Temp			
Source of Rmtf / Rmc			
Rm @ BHT			
Time Circulation Stopped	25 HOURS		
Time Logger on Bottom	01:55		
Maximum Recorded Temperature	87.3°		
Equipment Number	103		
Location	FORT MYERS		
Recorded By	P. MCHUGH		E. X. CALLAHAN
Witnessed By	D. McNABB		

<<< Fold Here >>>

All interpretations are opinions based on inferences from electrical or other measurements and we cannot and do not guarantee the accuracy or correctness of any interpretation, and we shall not, except in the case of gross or willful negligence on our part, be liable or responsible for any loss, costs, damages, or expenses incurred or sustained by anyone resulting from any interpretation made by any of our officers, agents or employees. These interpretations are also subject to our general terms and conditions set out in our current Price Schedule.

Comments



OTHER SERVICES: XYCGR, DIL/SP/LL3, BHC SONIC, FLOWMETER
THE FOLLOWING SERVICES WERE REPEATED UNDER FLOWING CONDITIONS:
FLOWMETER, FLUID CONDUCTIVITY TEMPERATURE



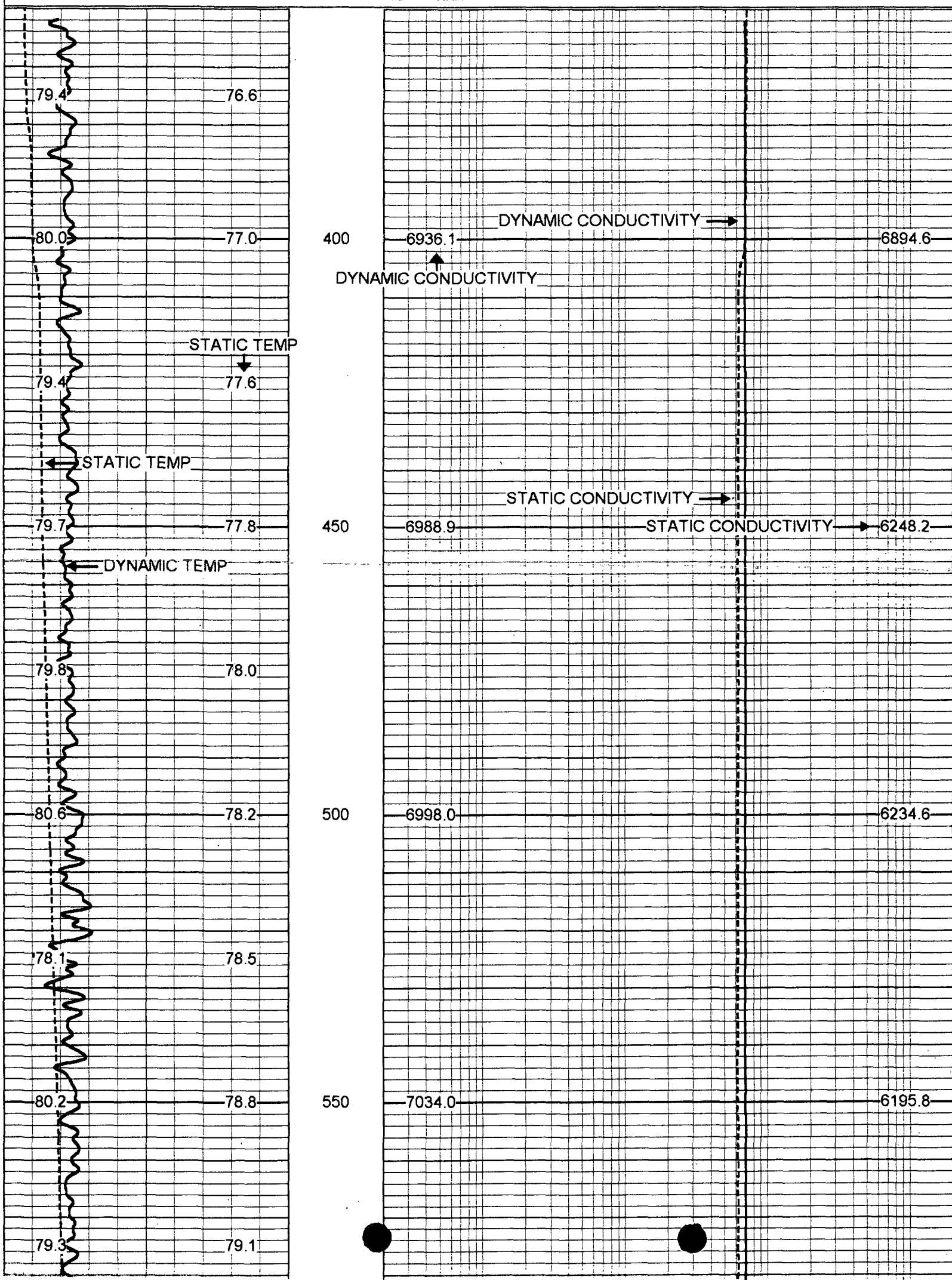
FLORIDA
GEOPHYSICAL LOGGING, INC.

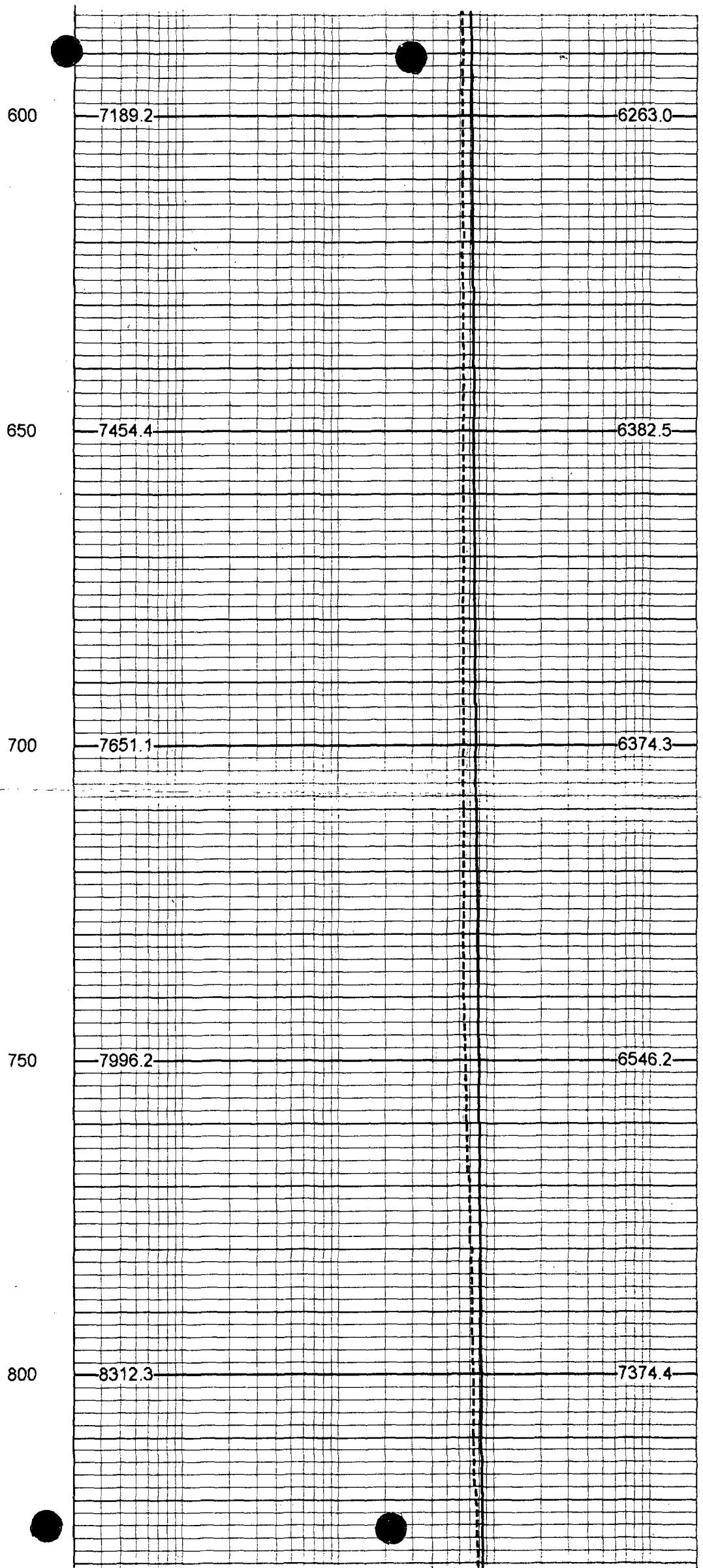
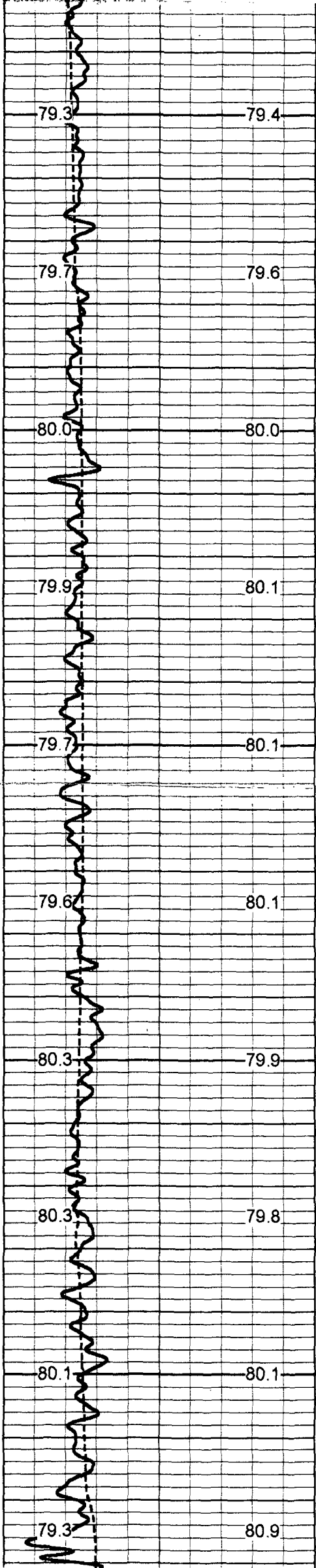
STATIC & DYNAMIC MERGE

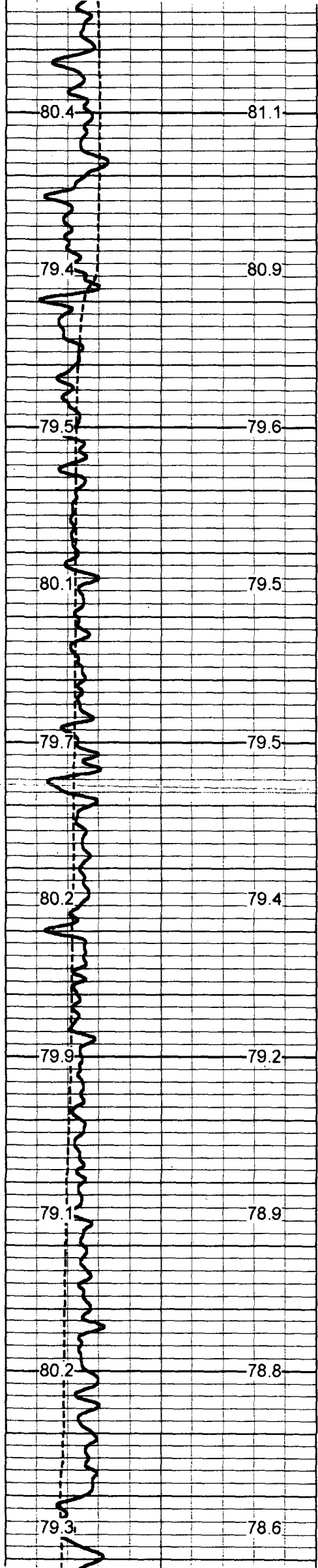
Database File: fmb_lw.db
 Dataset Pathname: run3/pass46
 Presentation Format: frttmpmg.prs
 Dataset Creation Date: Fri Jan 30 17:23:04 1998
 Charted by: Depth in Feet scaled 1:240

75 DYNAMIC TEMP (degF) 95
 75 STATIC TEMP (degF) 95

20 DYNAMIC CONDUCTIVITY 200000
 20 STATIC CONDUCTIVITY 200000







850

8787.4

7932.6

900

9000.4

7551.4

950

8299.7

7536.9

1000

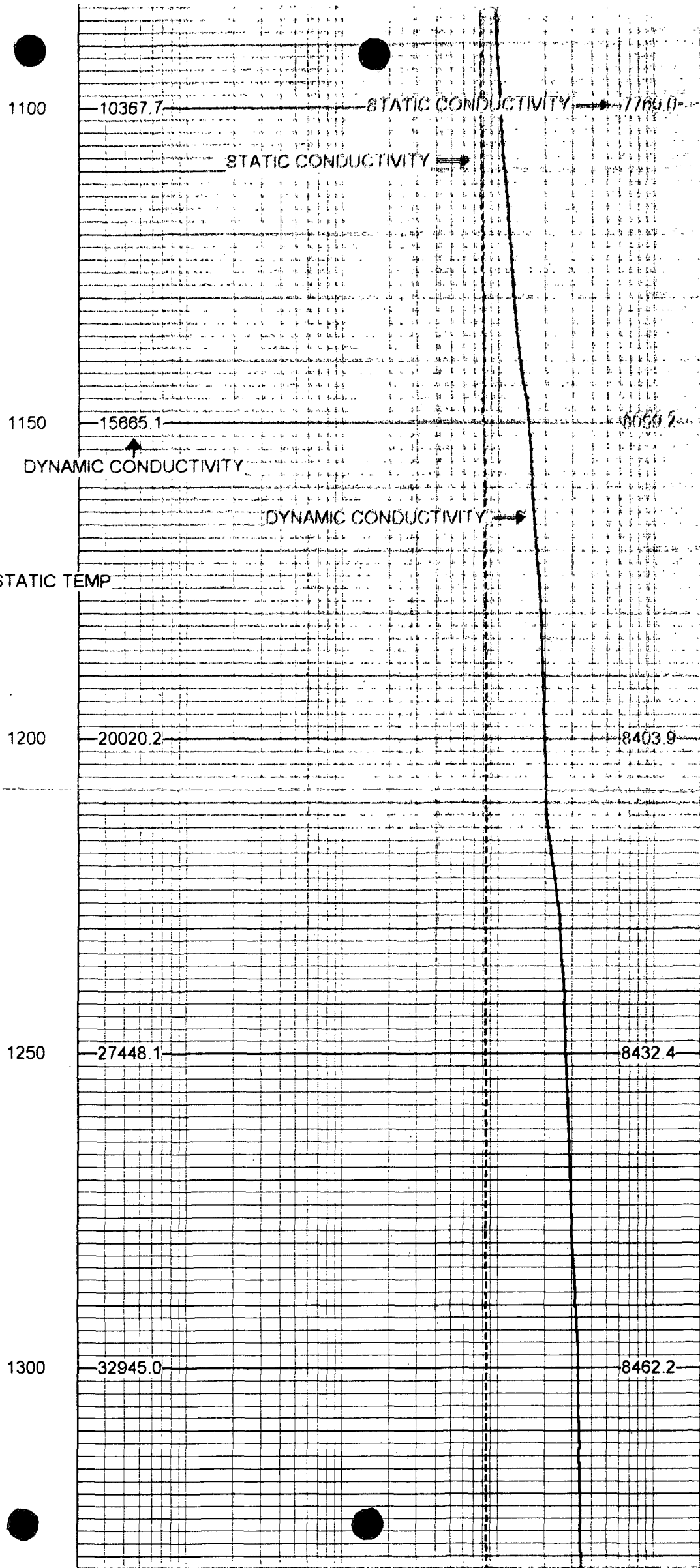
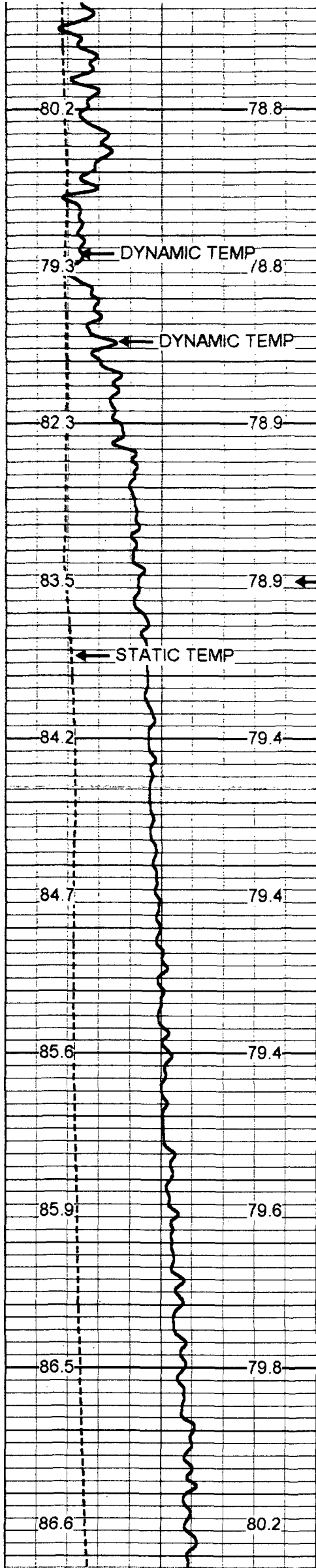
8311.6

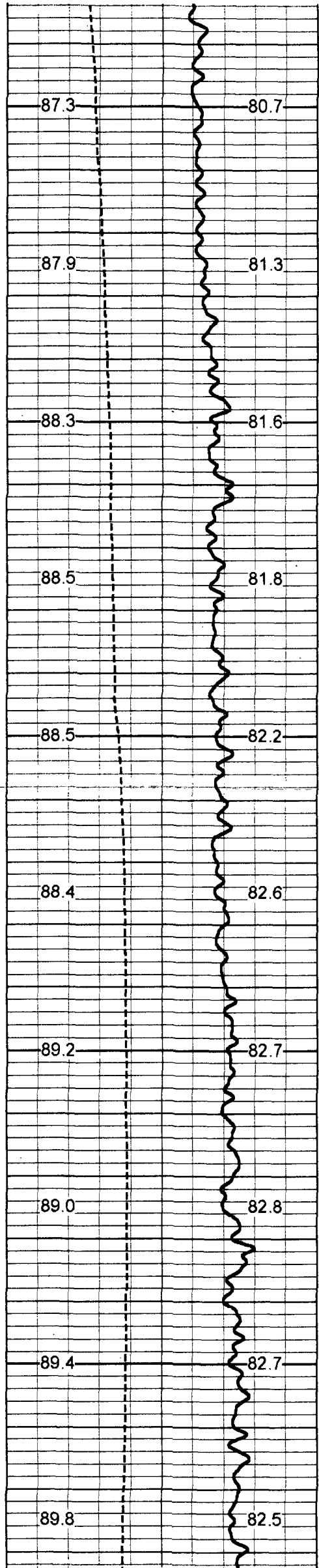
7527.3

1050

8403.7

7530.1





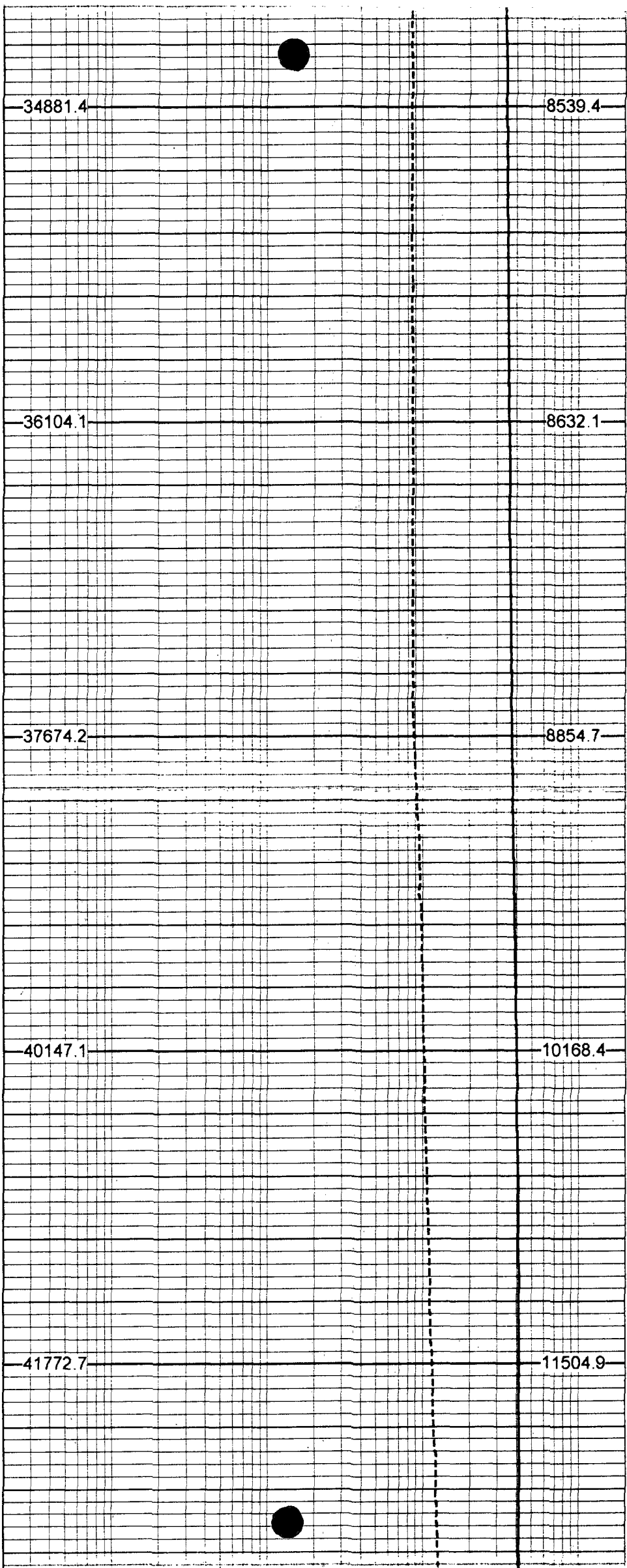
1350

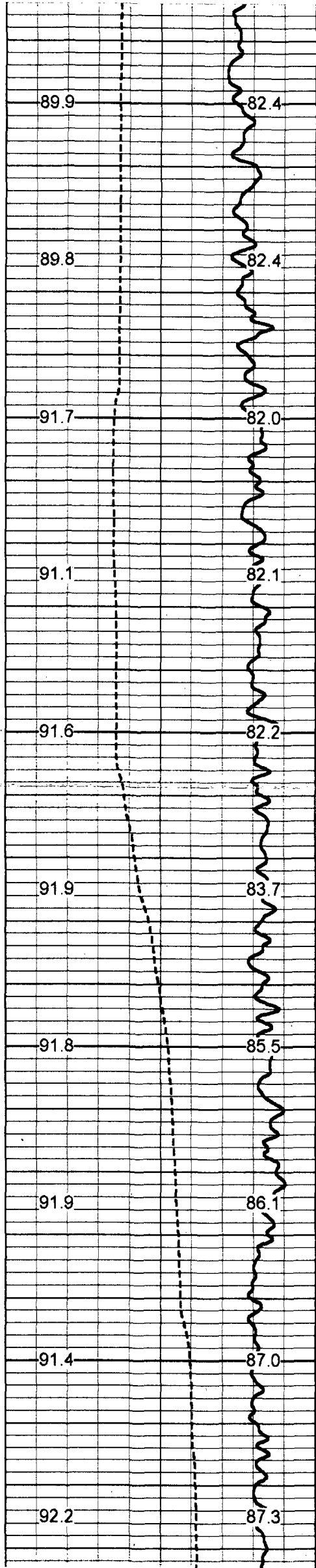
1400

1450

1500

1550





1600

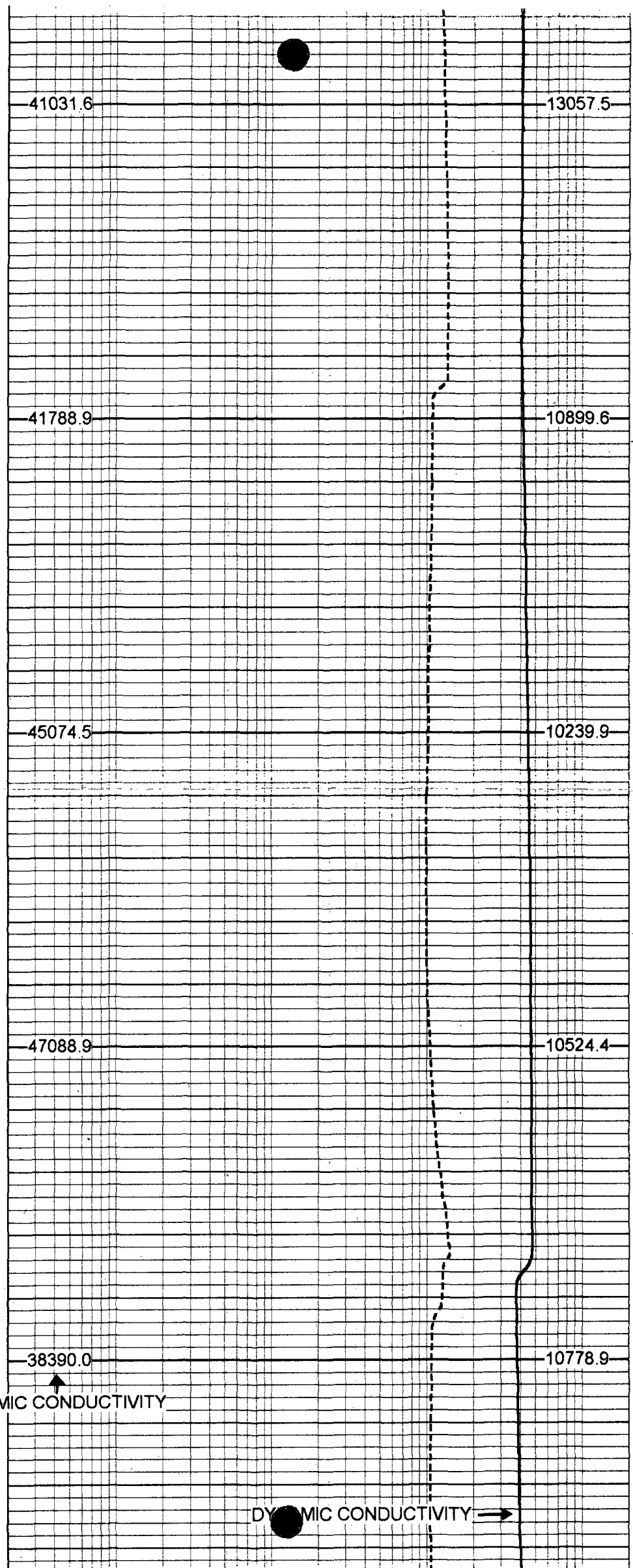
1650

1700

1750

1800

DYNAMIC CONDUCTIVITY ↑



DYNAMIC CONDUCTIVITY →

