



# FLUID CONDUCTIVITY TEMPERATURE LOG

Company	Water Resource Solutions		
Well	D.E.P. - ASR's District		
Field	Marco Lakes ASR Expansion		
County	Collier	State/Prv	Florida
State/Prv	Florida		
Location	Marco Lakes ASR Wellfield Expansion Southern Well Services		
Other Services	DIL,XY/GR BHC,FLOW VIDEO		
Permanent Datum	G.L.	Elevation	
Log Measured From	G.L.		K.B. D.F. G.L.
Drilling Measured From	G.L.		

Date	2-NOV-2004		
Run Number	FOUR		
Depth Driller	780'		
Depth Logger	782'		
Bottom Logged Interval	782'		
Top Log Interval	695'		
Open Hole Size	15"		
Type Fluid	WATER		
Density / Viscosity	NA/NA		
Max. Recorded Temp.	na		
Estimated Cement Top	SURFACE		
Time Well Ready	ROA 11/2/04		
Time Logger on Bottom	11:00 11/2/04		
Equipment Number	MVGS-1		
Location	Ft. Myers		
Recorded By	S. Miller		
Witnessed By	A. McThenia (WRS)		J. Bair (SWS)
Borehole Record			
Run Number	Bit	From	To
ONE	12.5"	45'	745'
TWO	25"	45'	732'
THREE	15"	732'	782'
Tubing Record			
	Size	Weight	From
			To
Casing Record	Size	Wgt/Ft	Top
Surface String	26"	0.375" WT	SURFACE
Prod. String	17.4" PVC	15.25" ID	SURFACE
Production String			Bottom
Liner			
Invoice No.	2004155	P.O. #	Job No. : * FINAL PRINT *

All interpretations are opinions based on inferences from electrical or other measurements and we cannot and do not guarantee the accuracy or correctness of any interpretation, and we shall not, except in the case of gross or willful negligence on our part, be liable or responsible for any loss, costs, damages, or expenses incurred or sustained by anyone resulting from any interpretation made by any of our officers, agents or employees. These interpretations are also subject to our general terms and conditions set out in our current Price Schedule.

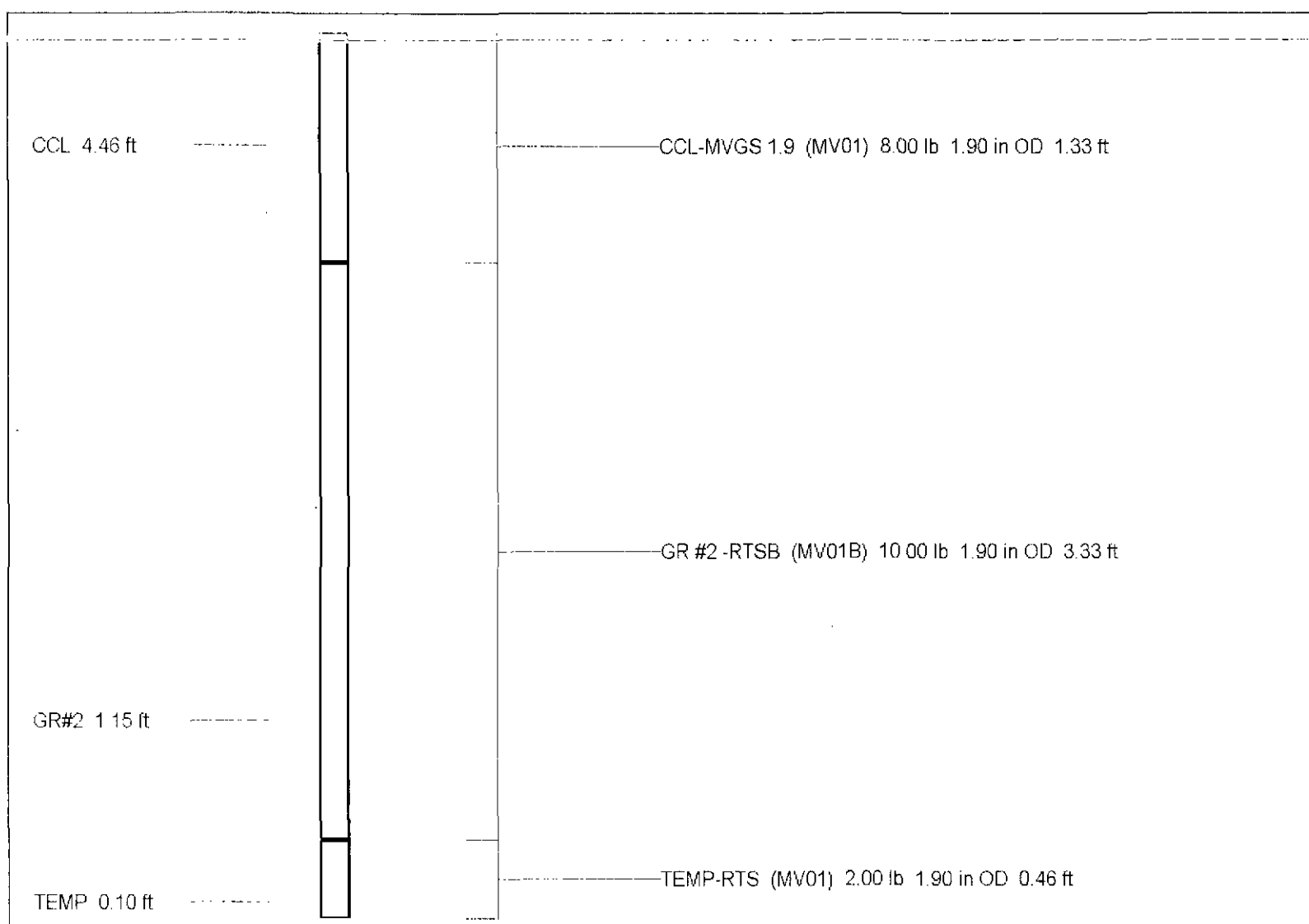
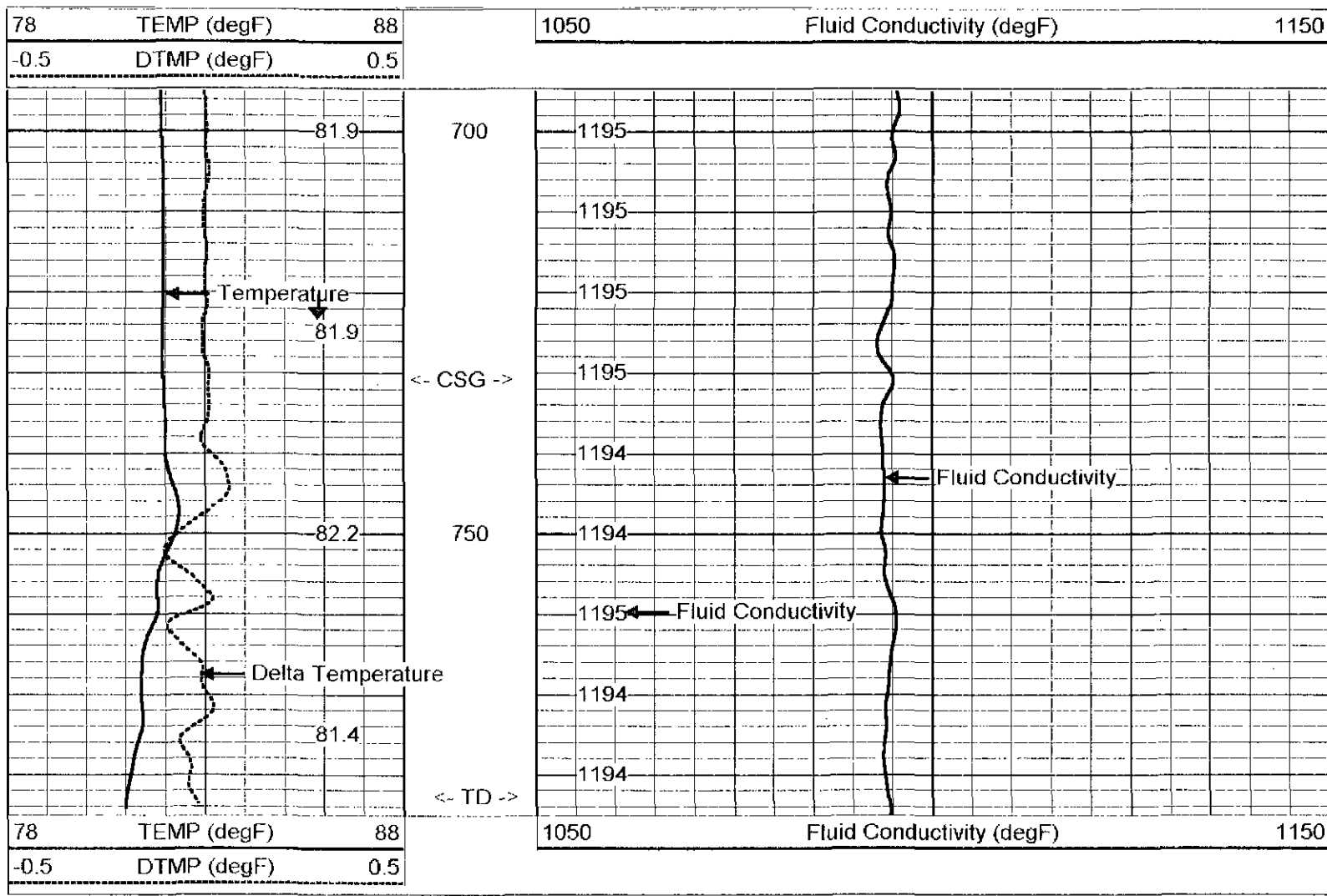
### Comments

A DYNAMIC DOWN pass was performed.  
 Cw=1195 uS/cm @ 80.9 degF (Dynamic Sample). Q = ~250 gpm.  
 FLUID RESISTIVITY CALIBRATION REPORT (Performed: 16-AUG-04 13:00)  
 OHM-M CPS  
 335.0 4565.33  
 820.1 4400.12  
 1525.1 3890.11  
 TEMPERATURE CALIBRATION REPORT (Performed: 16-AUG-04 13:45)  
 DEG-F CPS  
 34.6 2346.14  
 144.6 6955.44



# Dynamic FCT Down

Database File: swsm1-5.db  
 Dataset Pathname: run4/DFCT  
 Presentation Format: fct6.prs  
 Dataset Creation: Fri Oct 29 16:51:06 2004  
 Charted by: Depth in Feet scaled 1:240



Dataset: run4/pass1  
 Total Length: 5.12 ft  
 Total Weight: 20.00 lb