



FLORIDA

GEOPHYSICAL LOGGING, INC.

HIGH RESOLUTION
TEMPERATURE
LOG

COMPANY MISSIMER INTERNATIONAL, INC.

WELL MARCO ISLAND IW#1

FIELD MARCO ISLAND

COUNTY _____ STATE _____

LOCATION _____

OTHER SERVICES:
RTS

SEC. _____ TWP _____ RGE _____

ELEV.: K.B. _____
D.F. _____
G.L. _____

PERMANENT DATUM PAD LEVEL

LOG MEASURED FROM PL _____ FT. ABOVE PERMANENT DATUM

DRILLING MEASURED FROM PL _____

DATE 13-AUGUST-1997

RUN NO. ONE

TYPE LOG TEMPERATURE

DEPTH-DRILLER 3340'

DEPTH-LOGGER 3300'

LOGGED INTERVAL 3300' TO SURFACE

OPERATING RIG TIME 2.5 HOURS

TYPE FLUID IN HOLE WATER

SALINITY, PPM CL NA

DENSITY-VISCOSITY NA

LEVEL FULL

MAX. REC. TEMP, DEG F. 100 DEFG

EQUIPMENT-LOCATION 102 FTM

RECORDED BY LEE/MILLER

WITNESSED BY BOB.MALIVA

BOREHOLE RECORD

CASING RECORD

RUN NO.	BIT	FROM	TO	SIZE	WGT.	FROM	TO
				44"	.5 M.T	230'	SURFACE
				39"	.5 M.T	400'	SURFACE
				34"	.5 M.T	910'	SURFACE
				24"	.5 M.T	2640'	SURFACE

ALL INTERPRETATIONS ARE OPINIONS BASED ON INFERENCES FROM ELECTRICAL OR OTHER MEASUREMENTS AND WE CANNOT AND DO NOT GUARANTEE THE ACCURACY OR CORRECTNESS OF ANY INTERPRETATION, AND WE SHALL NOT, EXCEPT IN THE CASE OF GROSS OR WILLFULL NEGLIGENCE ON OUR PART, BE LIABLE OR RESPONSIBLE FOR ANY LOSS, COSTS, DAMAGES, OR EXPENSES INCURRED OR SUSTAINED BY ANYONE RESULTING FROM ANY INTERPRETATION MADE BY ANY OF OUR OFFICERS, AGENTS OR EMPLOYEES. THESE INTERPRETATIONS ARE ALSO SUBJECT TO OUR GENERAL TERMS AND CONDITIONS SET OUT IN OUR CURRENT PRICE SCHEDULE.

REMARKS

RADIOACTIVE TRACER/TEMPERATURE TOOL STRING CONFIGURATION

-- RADIOACTIVE TRACER/TEMPERATURE TOOL

-- UPPER GR -- 23.5 FT. FROM BOT

-- TOTAL TOOL STRING LENGTH = 27.5 FT.--

-- EJECTOR PORT -- 13.5 FT. FROM BOT

-- MIDDLE GR -- 11 FT. FROM BOT

-- CCL -- 9.5 FT. FROM BOT



Entered into
OCULUS
South District

-- LOWER GR -- 1 FT. FROM BOT

-- BOT -- TEMPERATURE MEASURE POINT

REMARKS

LOGGED GOING DOWN.

VERSION: 2.42

MAIN PASS

MIIW1TMP

FINISH DEPTH: 3310.1 FEET DIRECTION: DOWN DATE: 08/13/97 TIME: 08:21:20 MODE: TRACE PLAYBACK

DELTA TEMPERATURE

-1.0

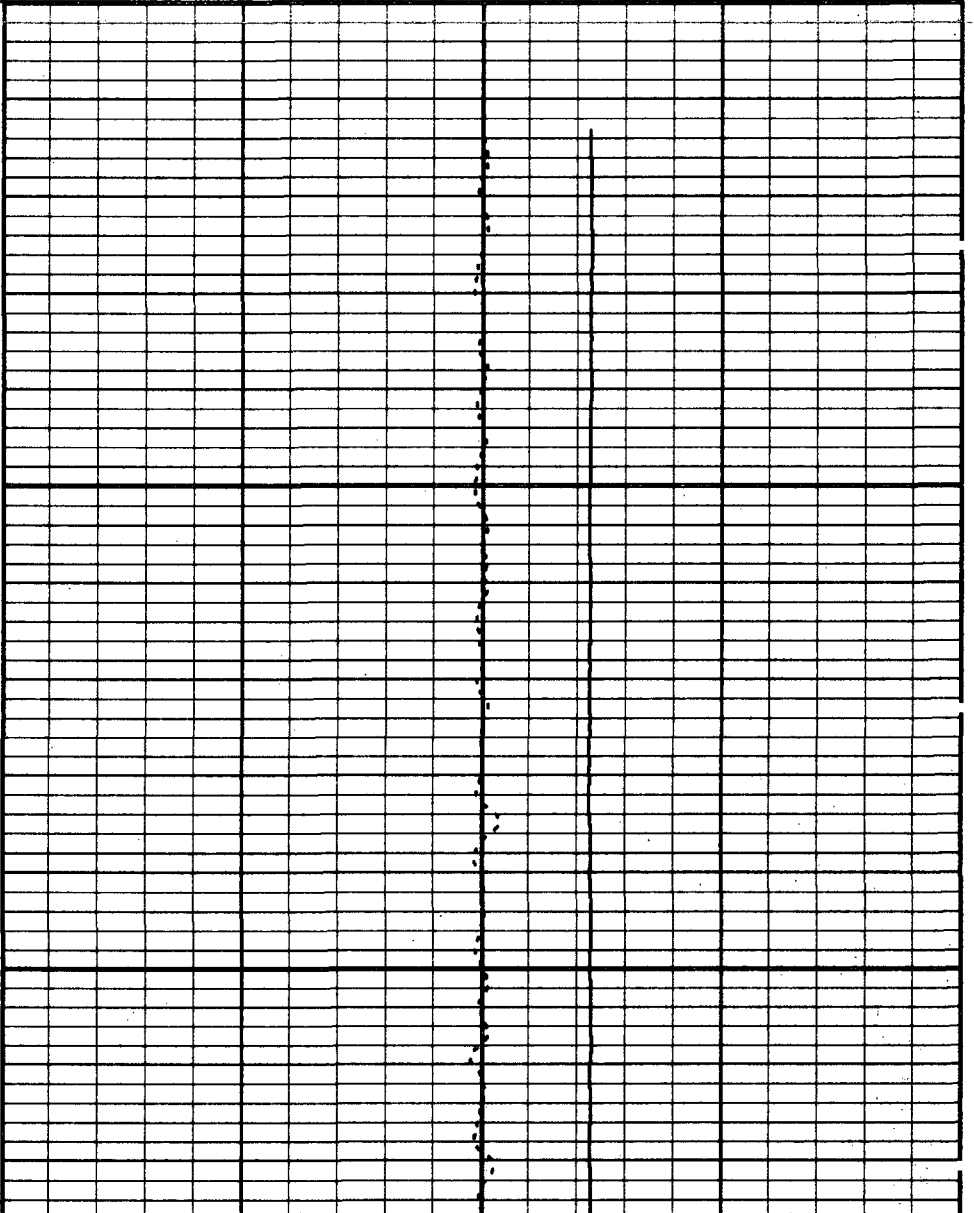
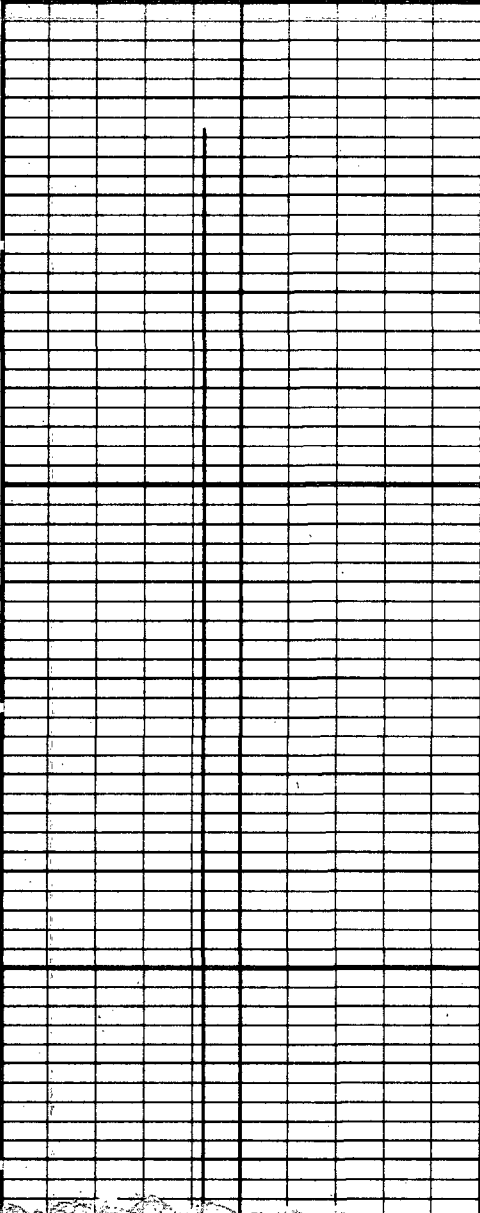
1.0

MC: TEMPERATURE

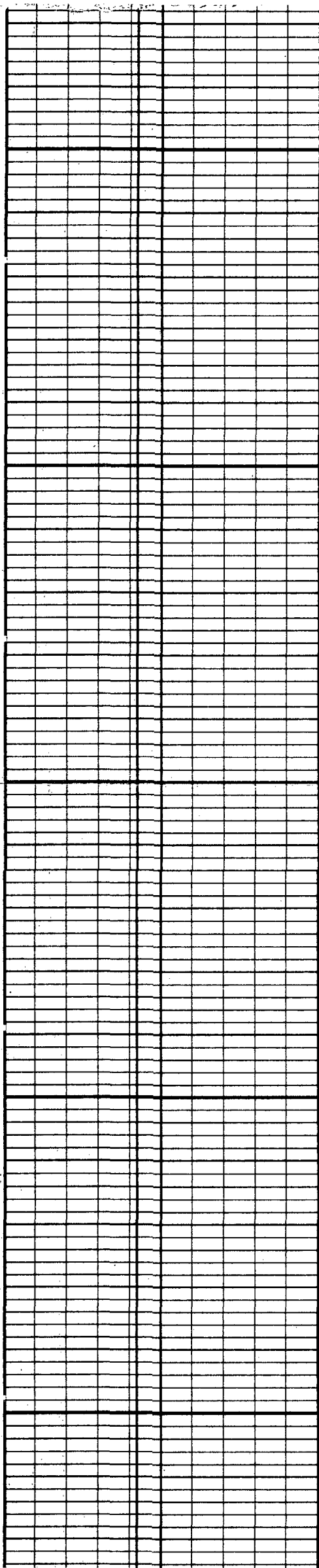
50 DEGREES 150

TEMPERATURE

80 DEGREES 100

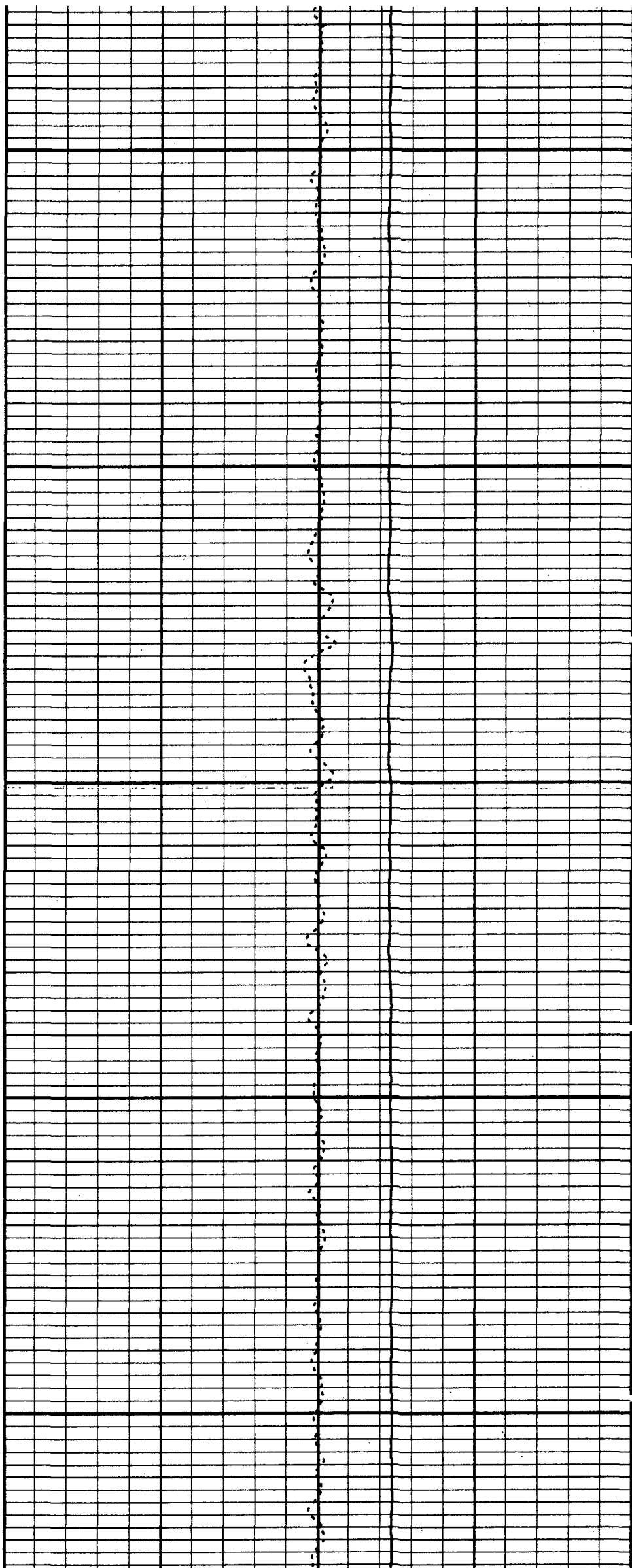


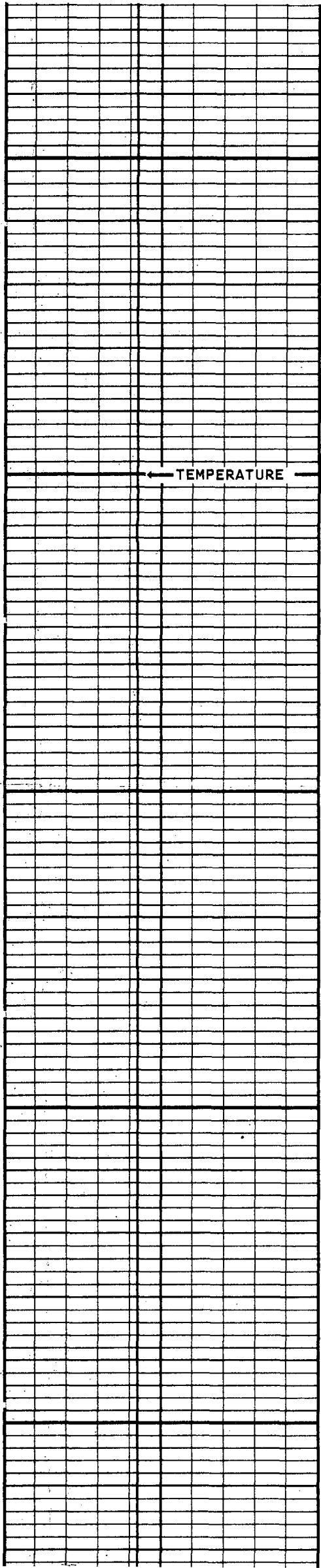
100



200

300

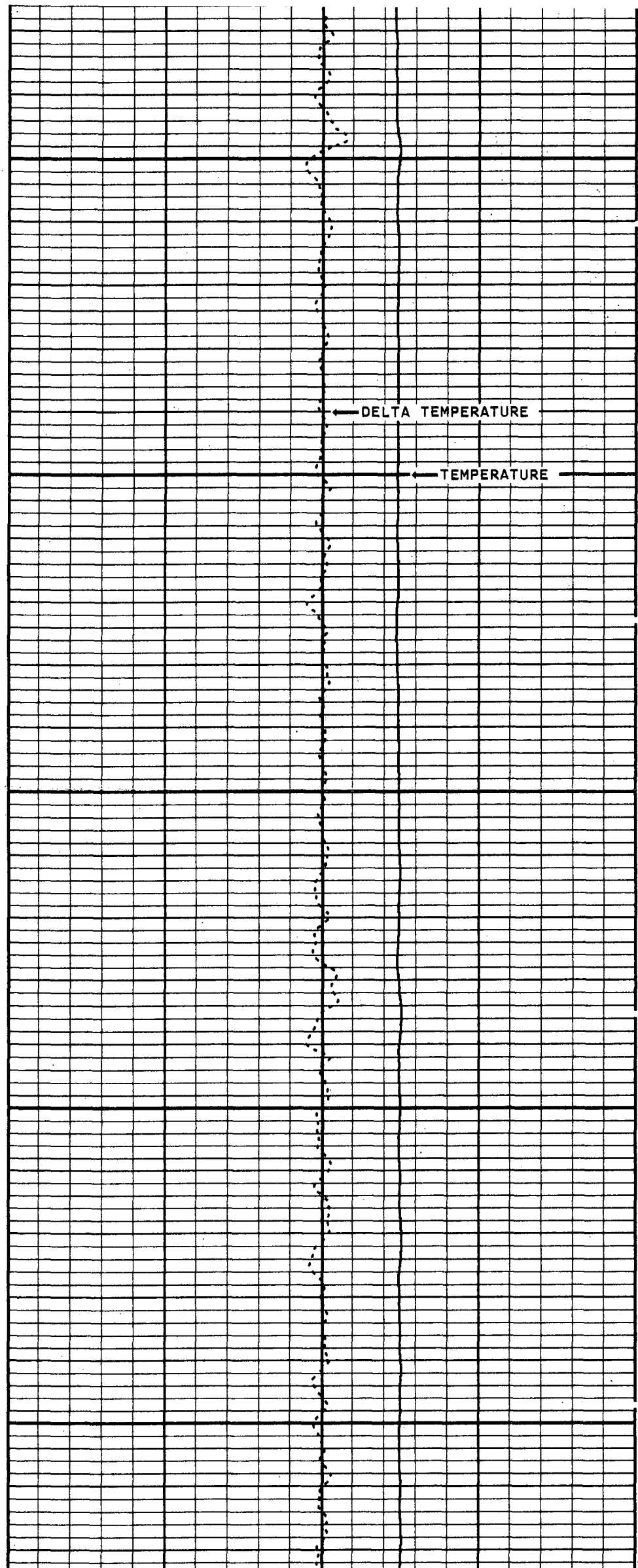


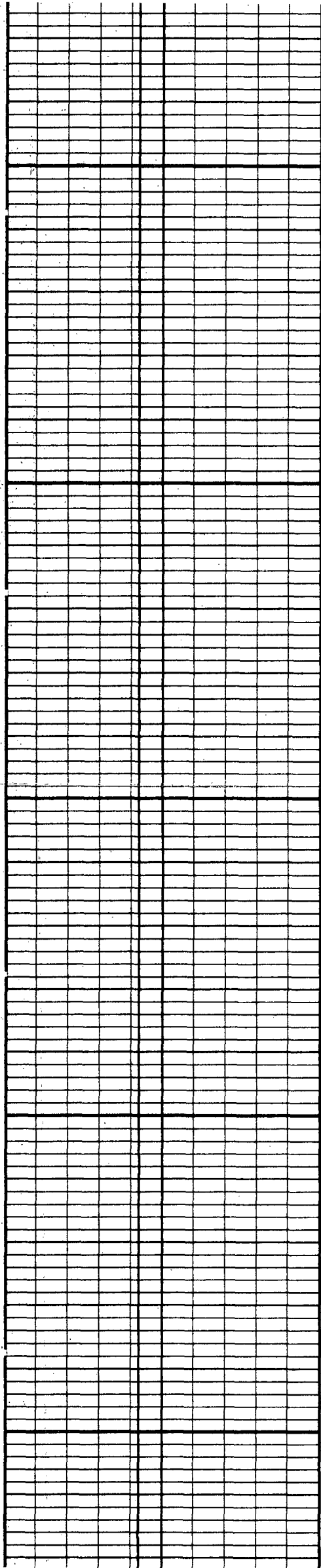


400

500

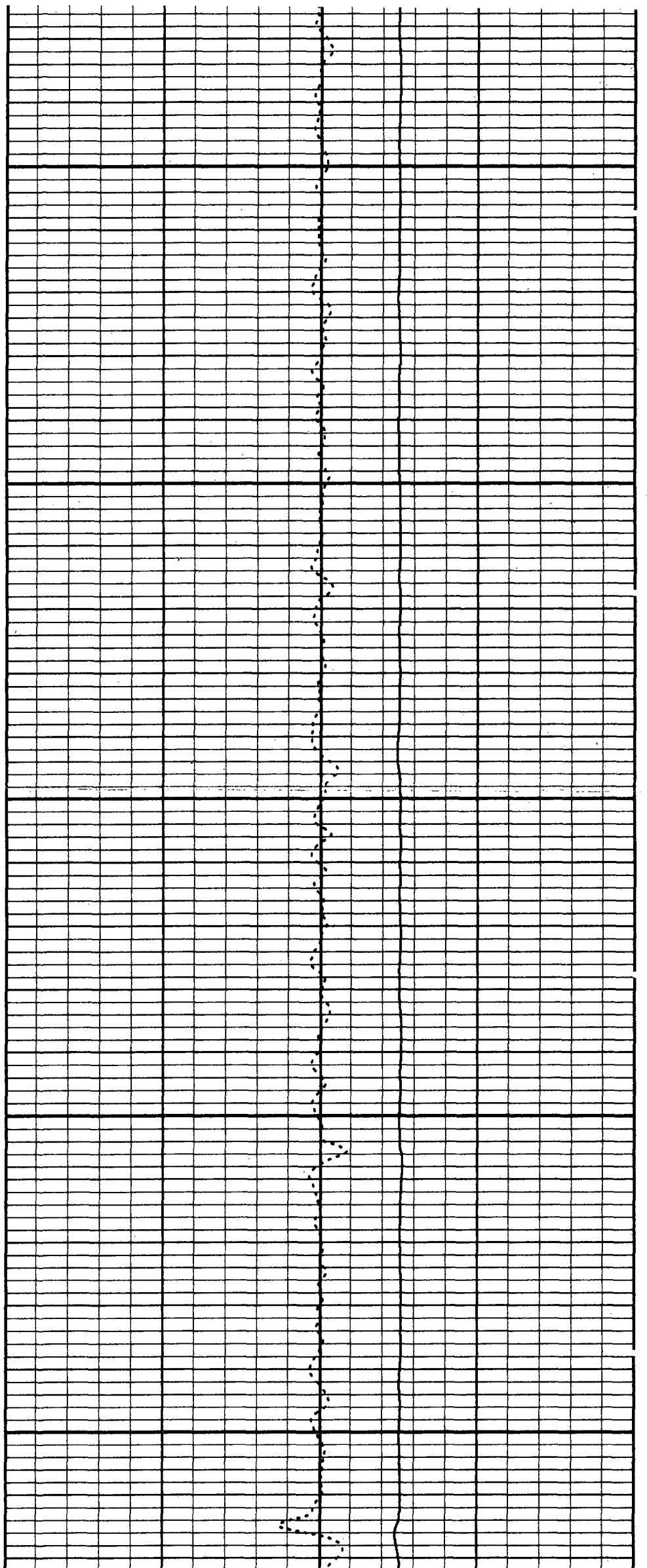
600

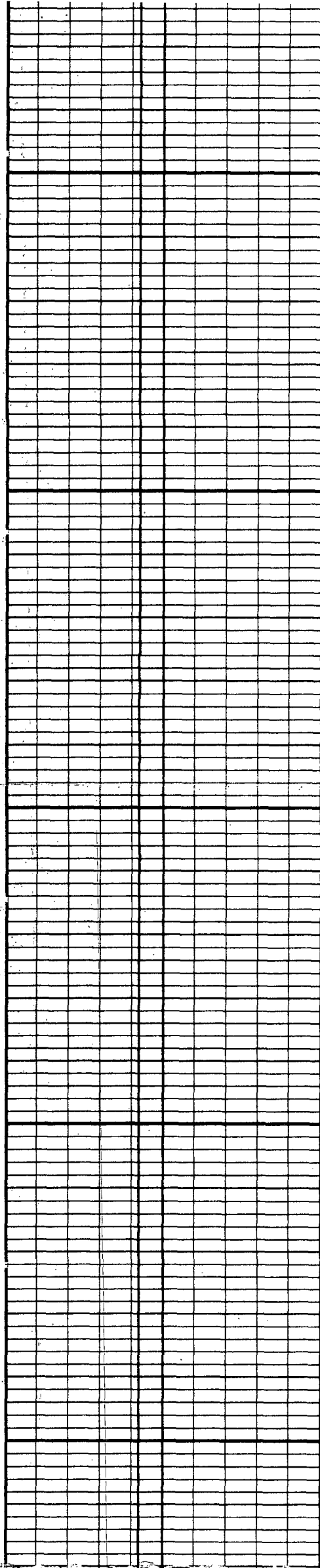




700

800

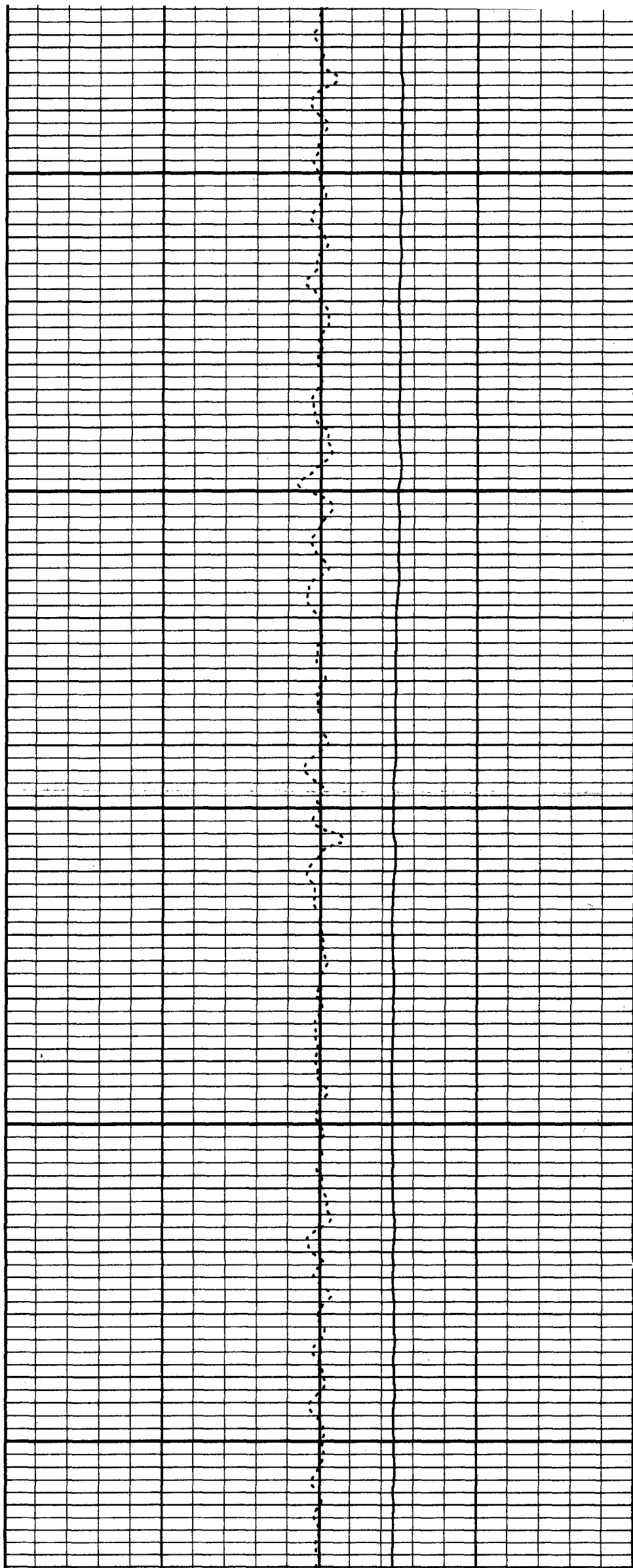


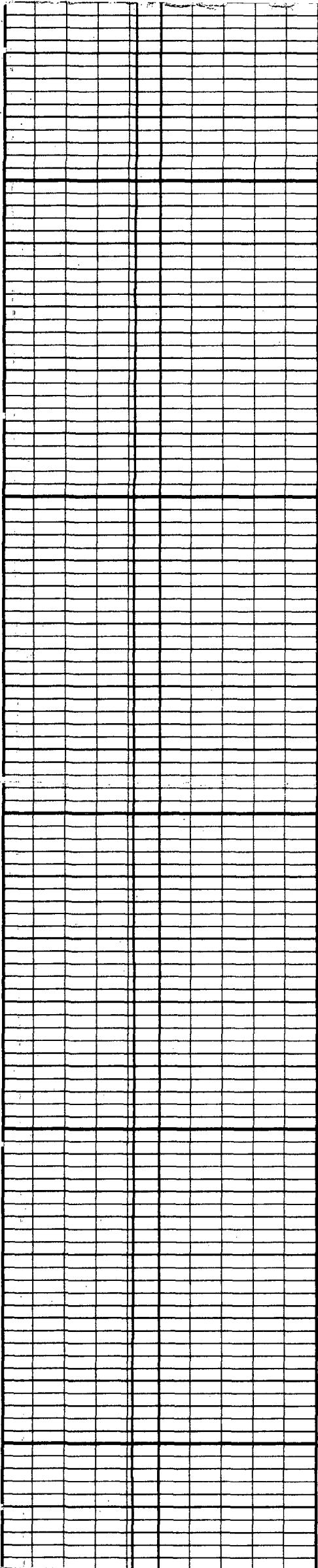


900

1000

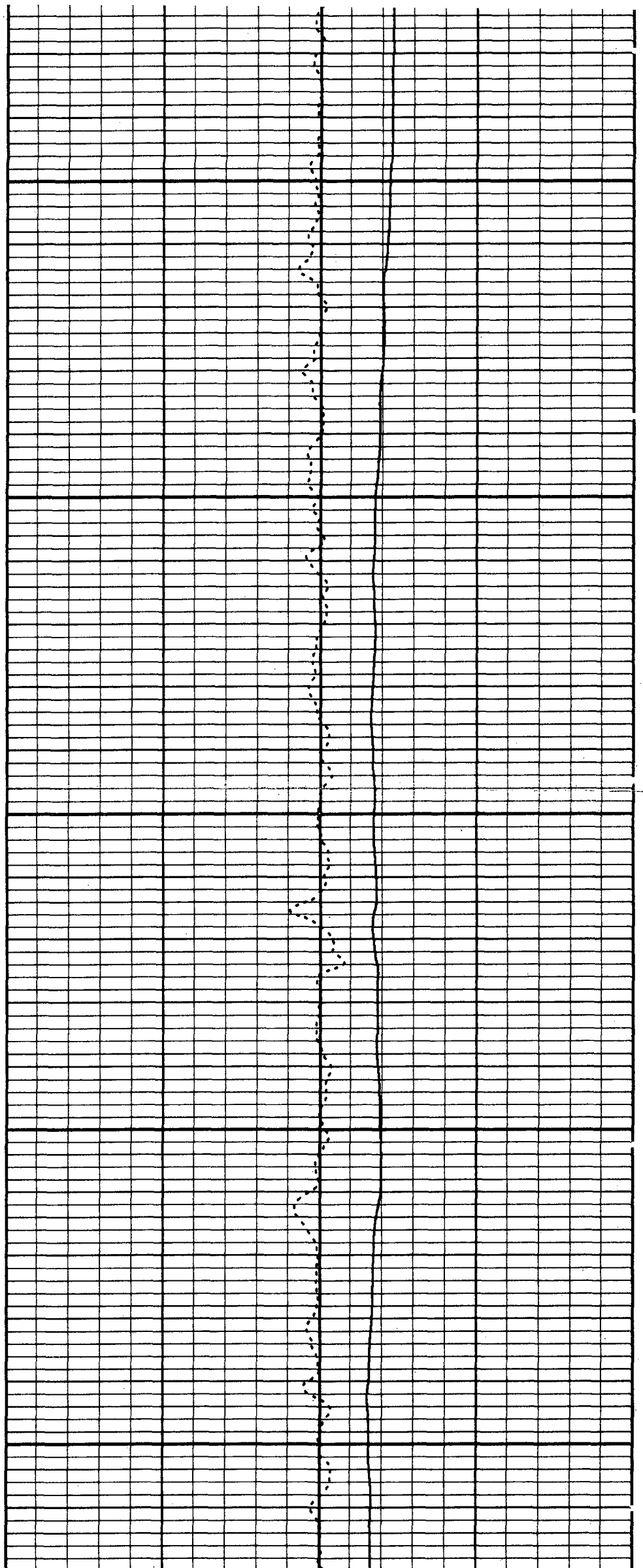
1100

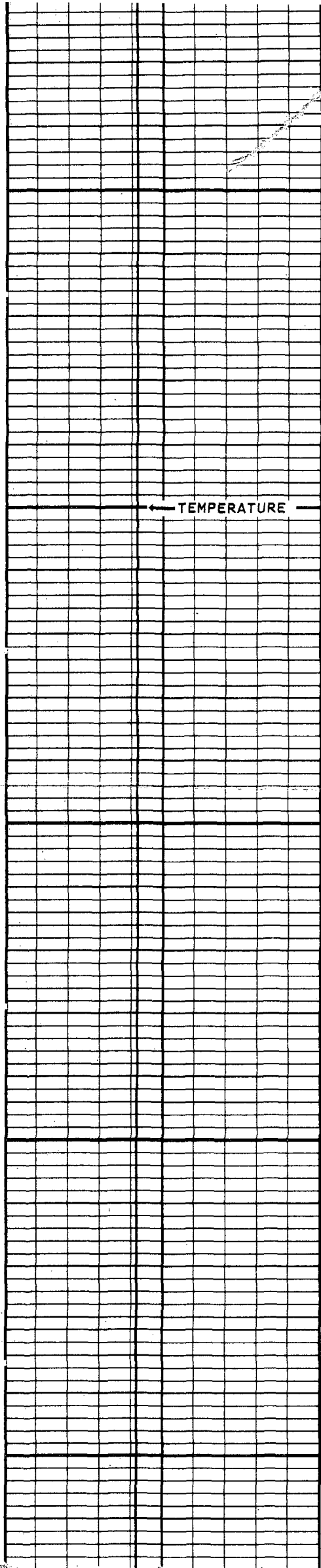




1200

1300

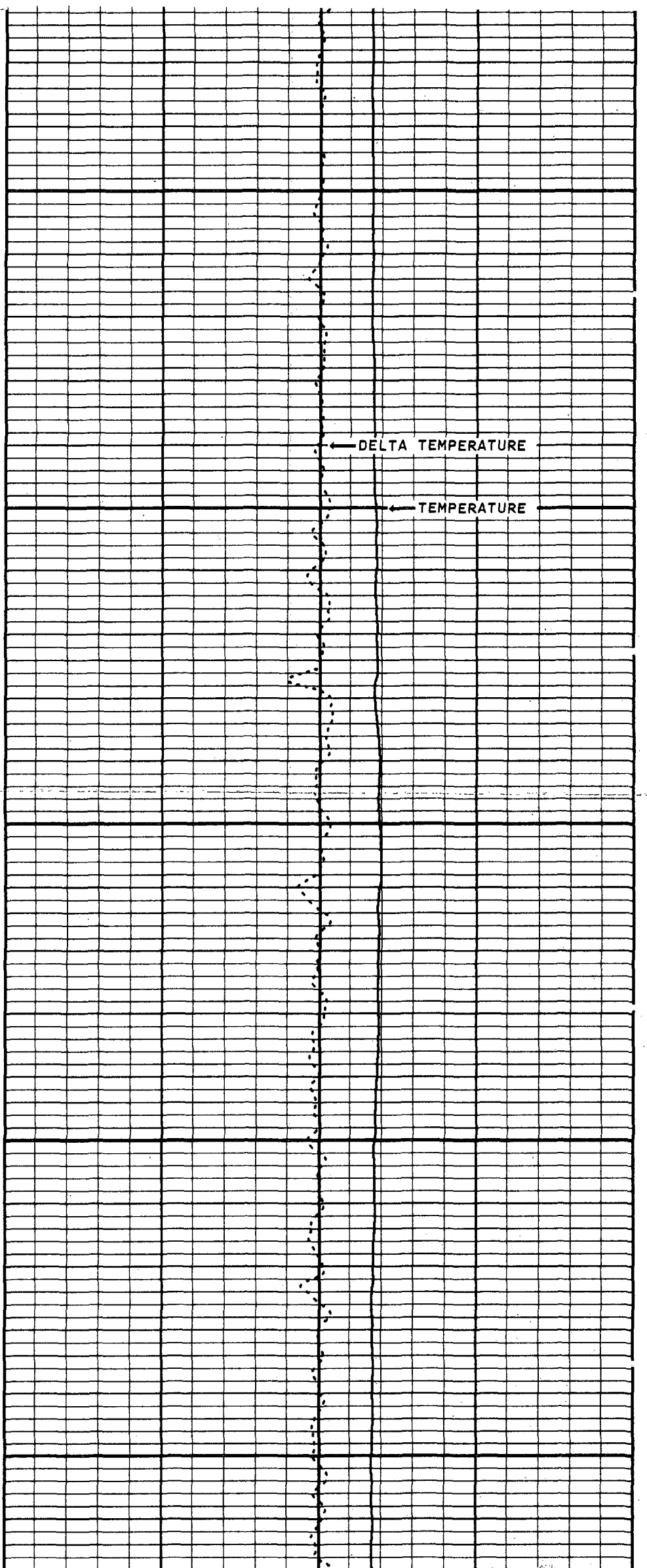




1400

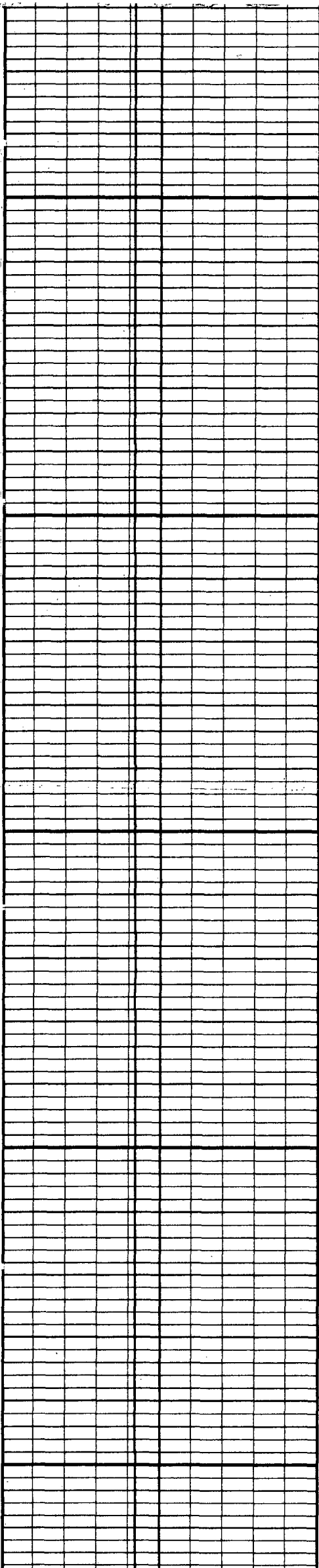
1500

1600



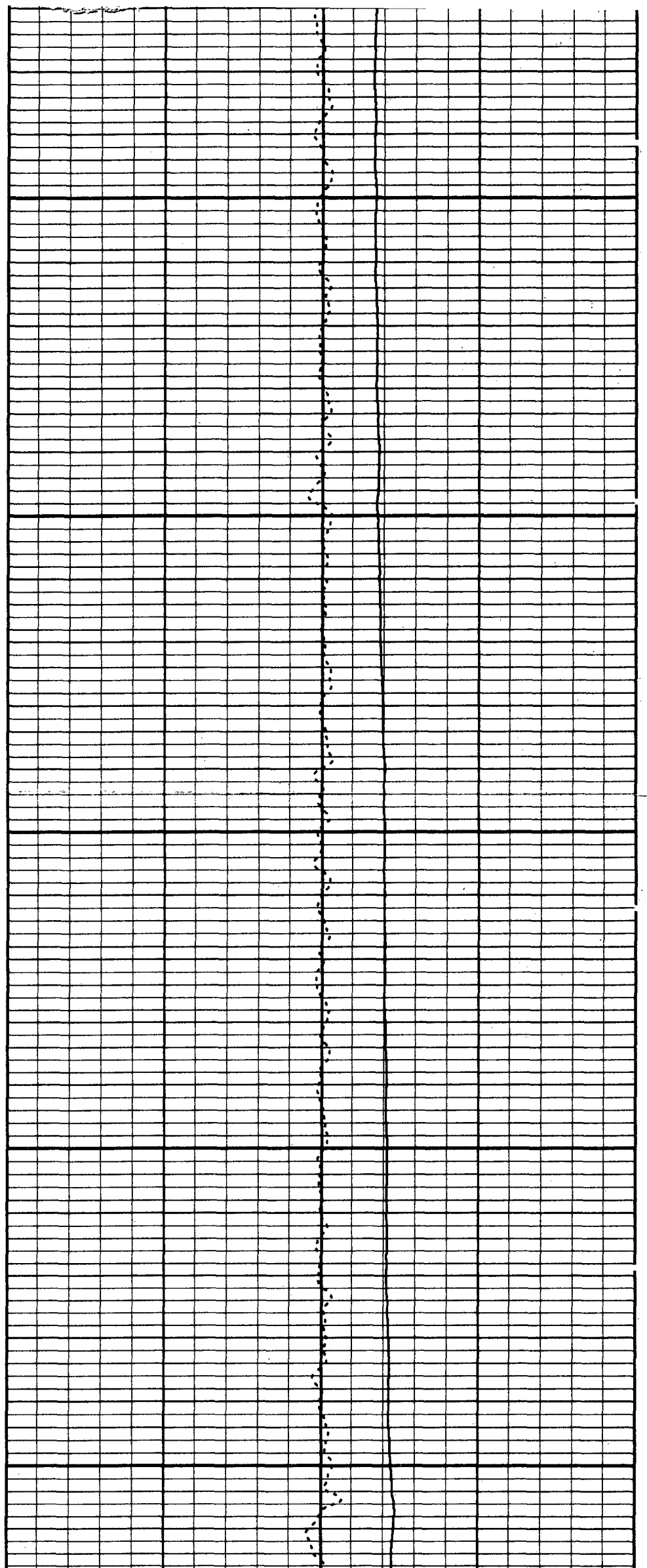
DELTA TEMPERATURE

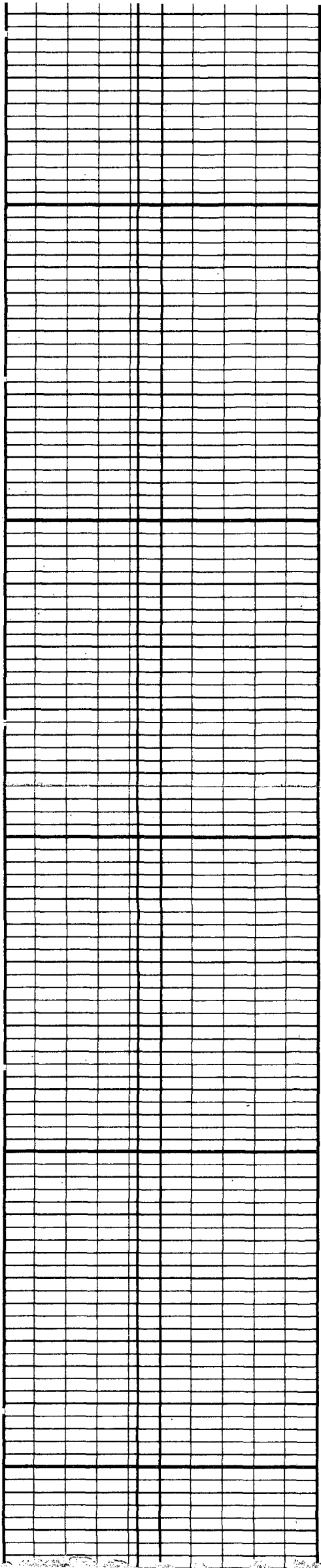
TEMPERATURE



1700

1800

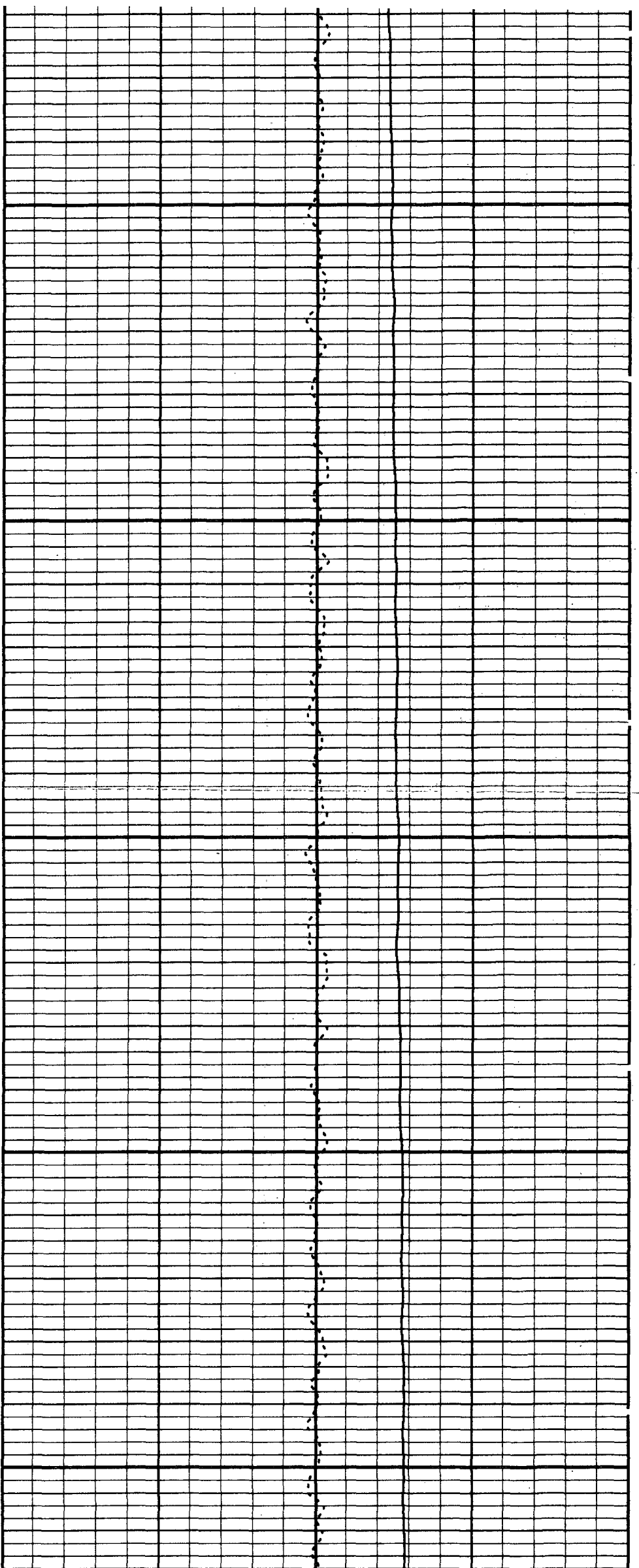


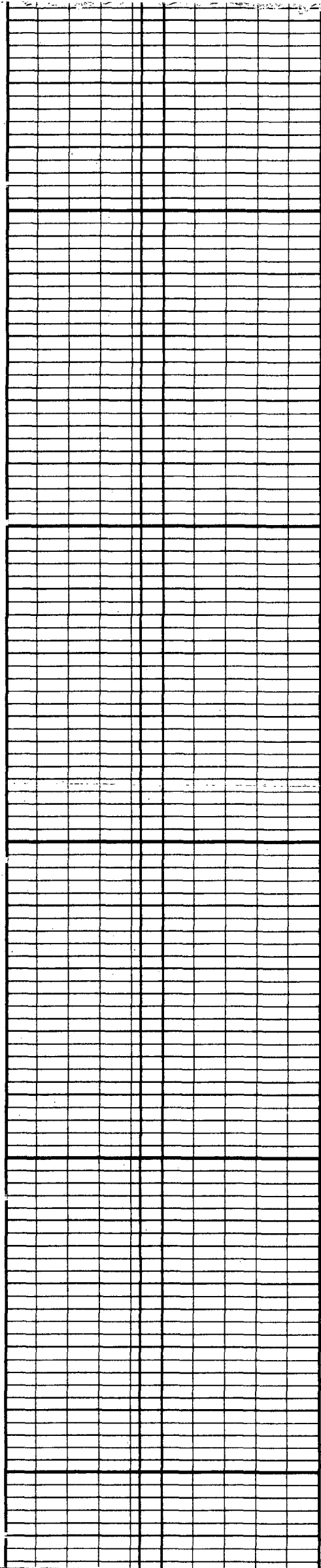


1900

2000

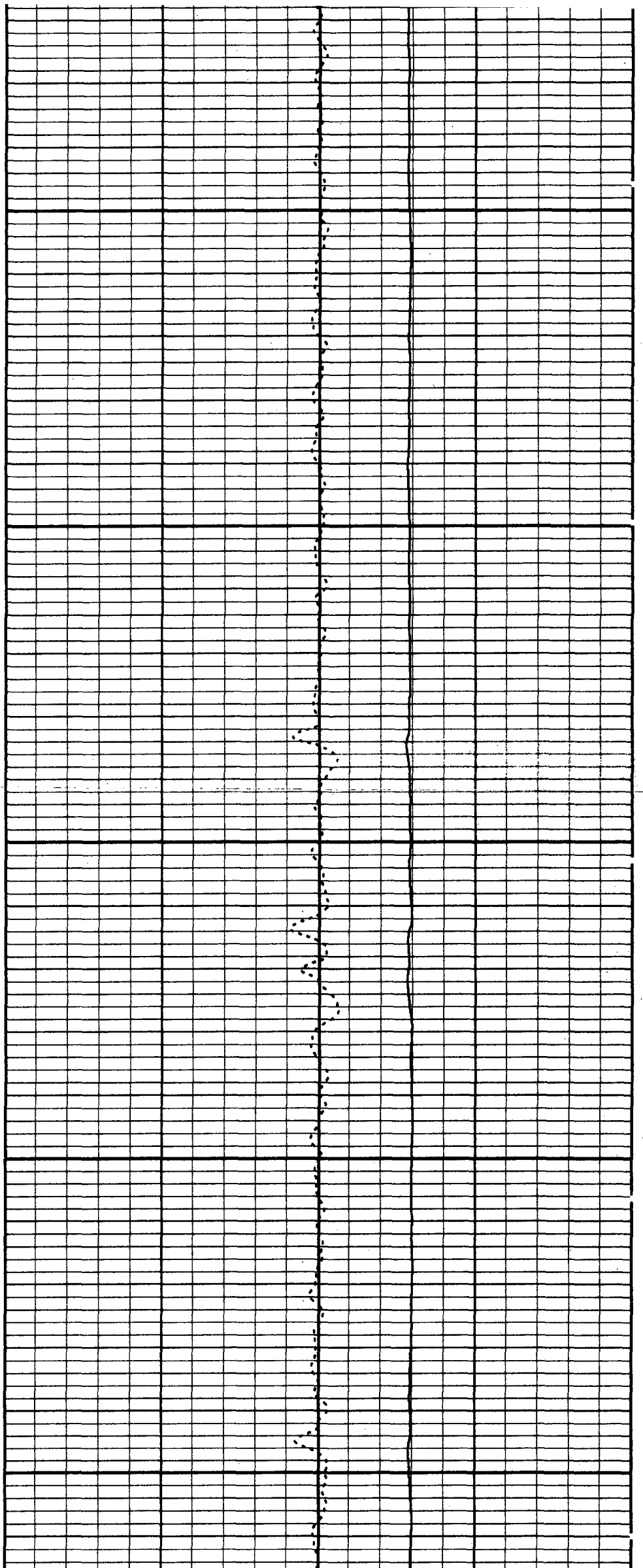
2100

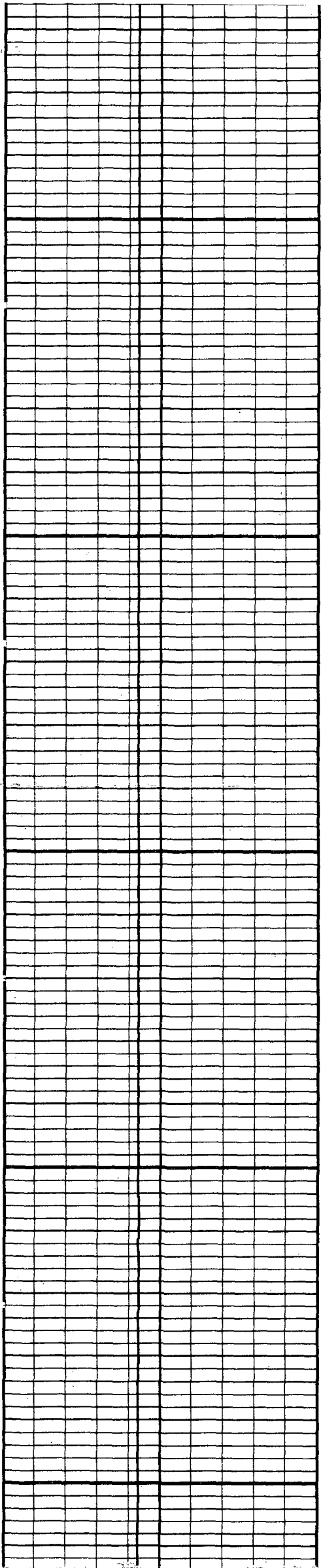




2200

2300

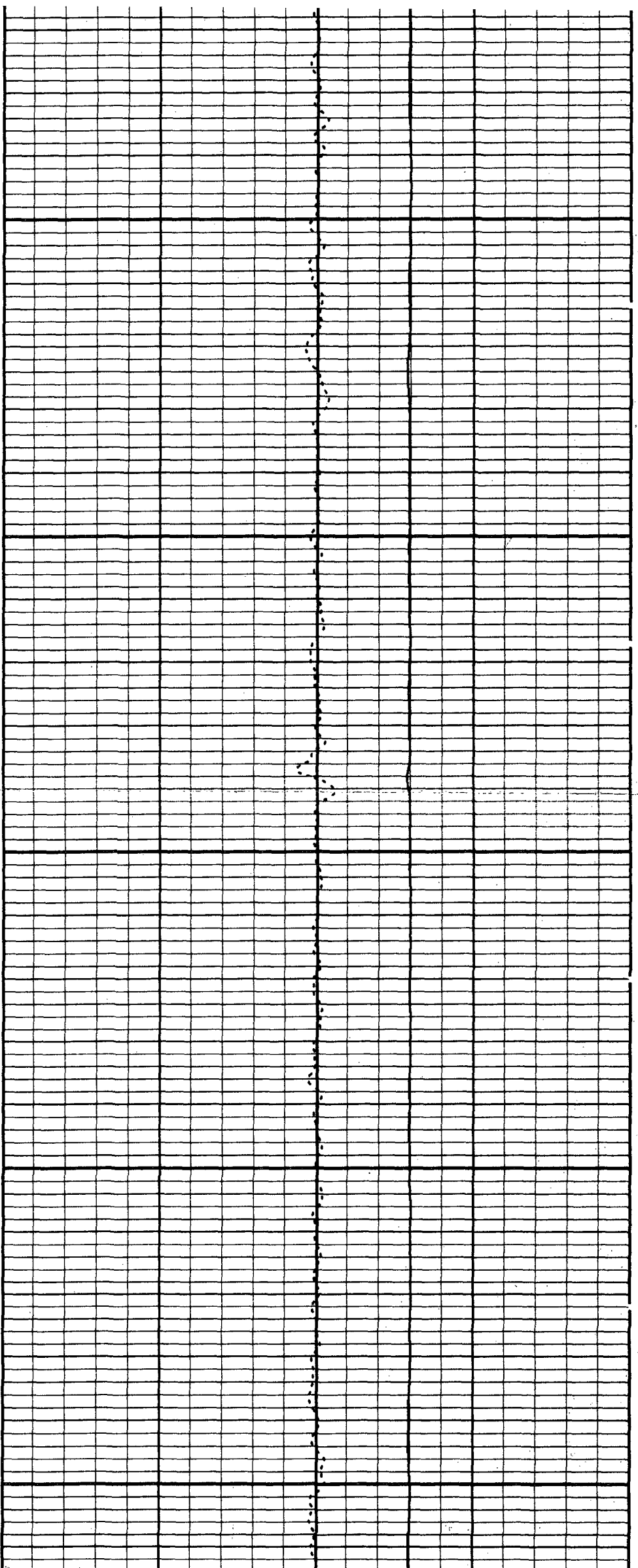


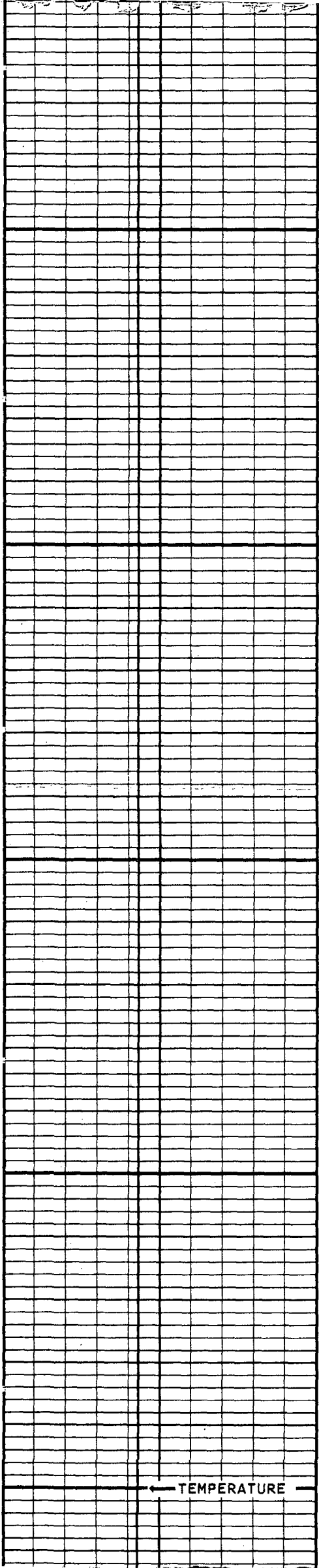


2400

2500

2600

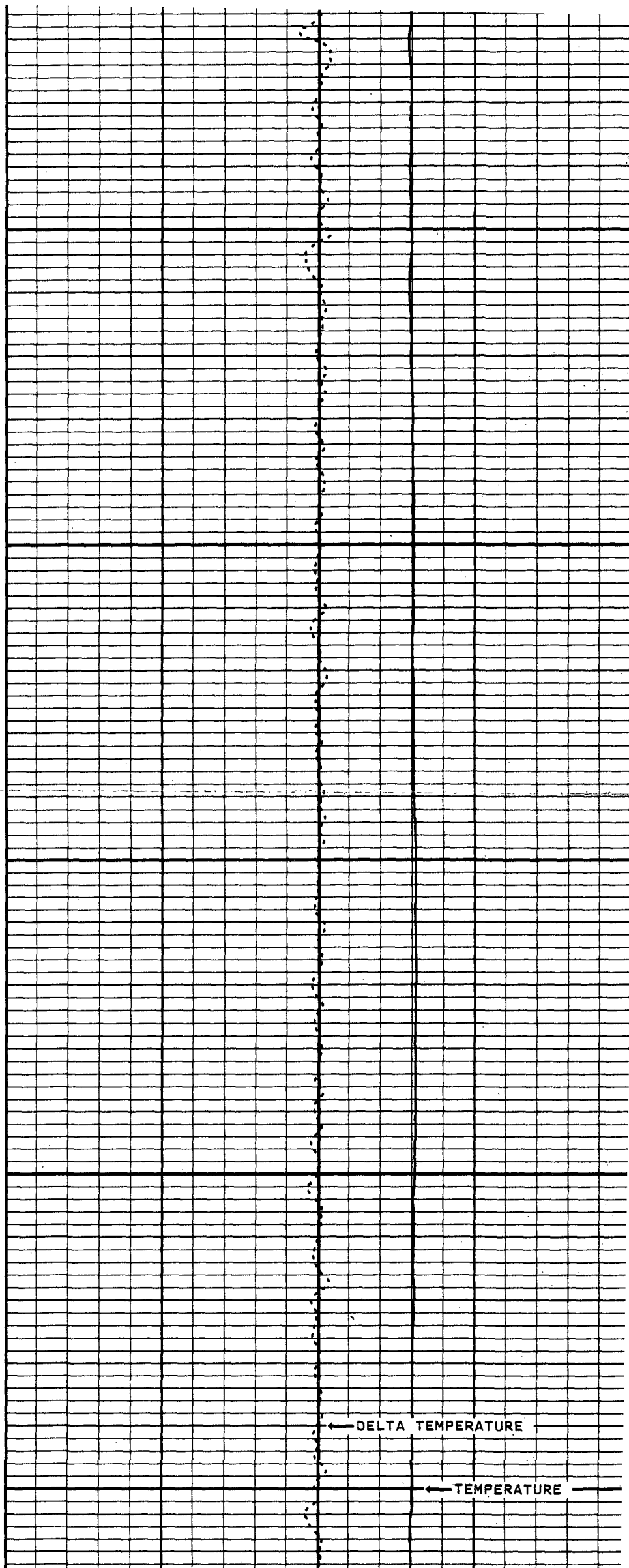




2700

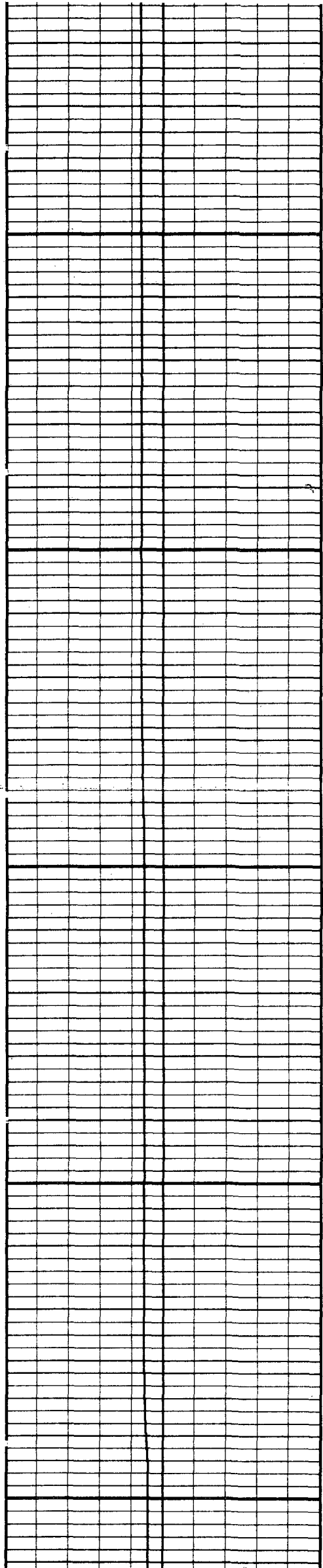
2800

← TEMPERATURE →



← DELTA TEMPERATURE →

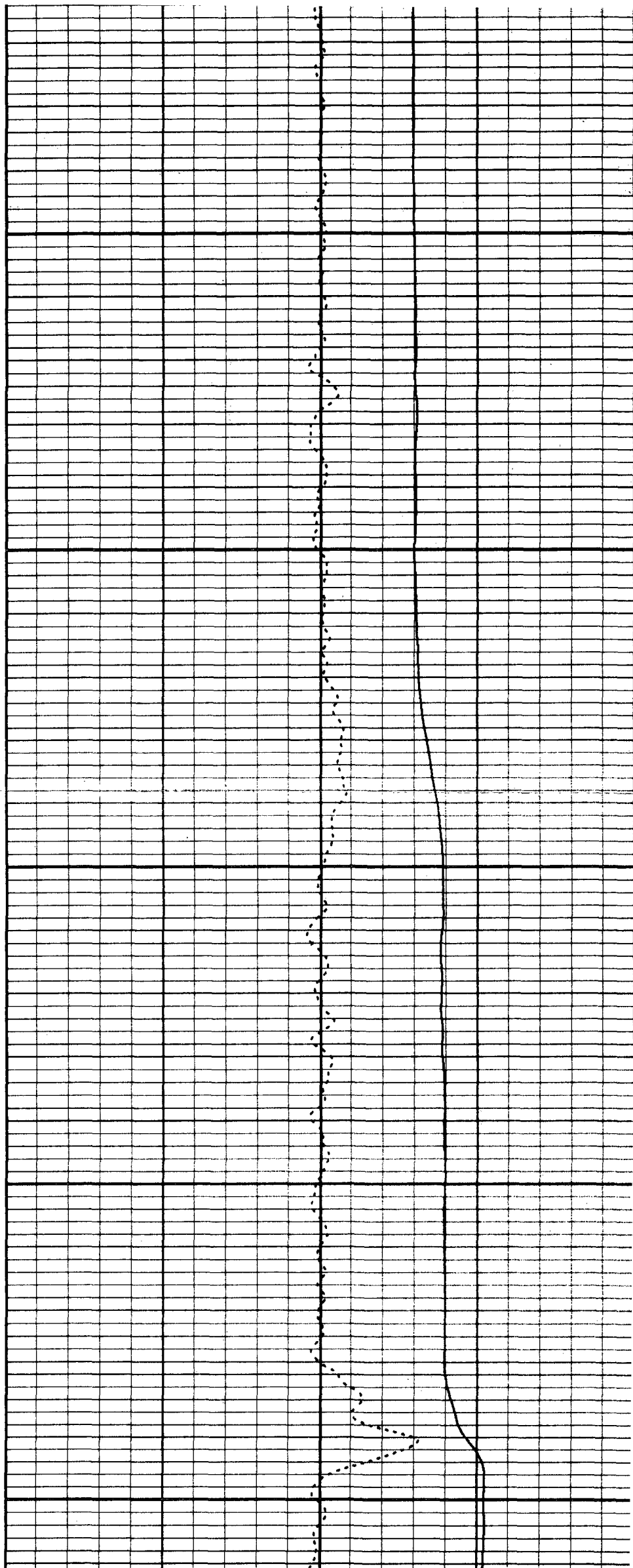
← TEMPERATURE →

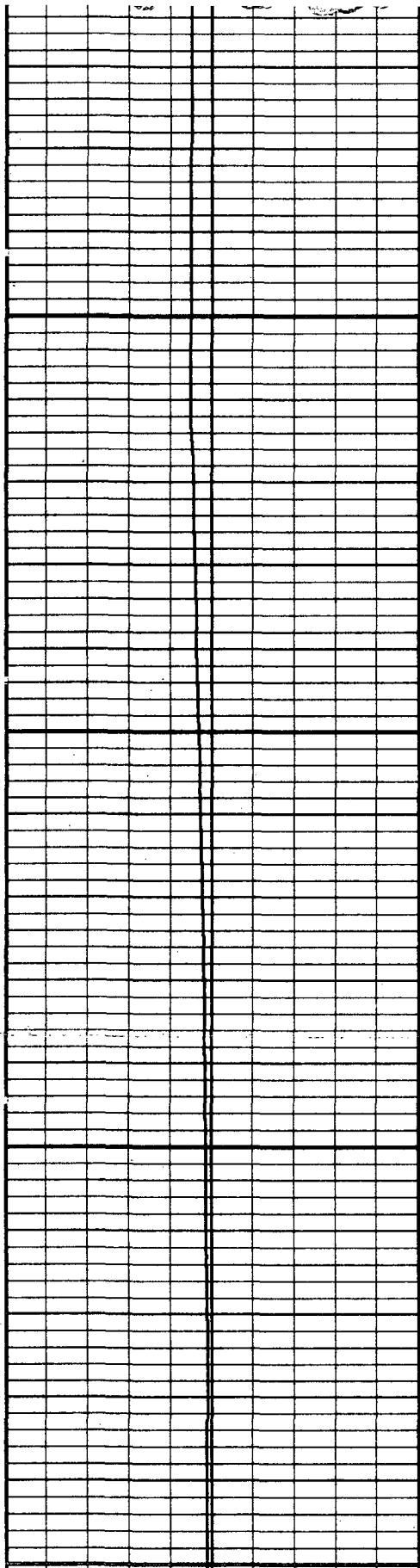


2900

3000

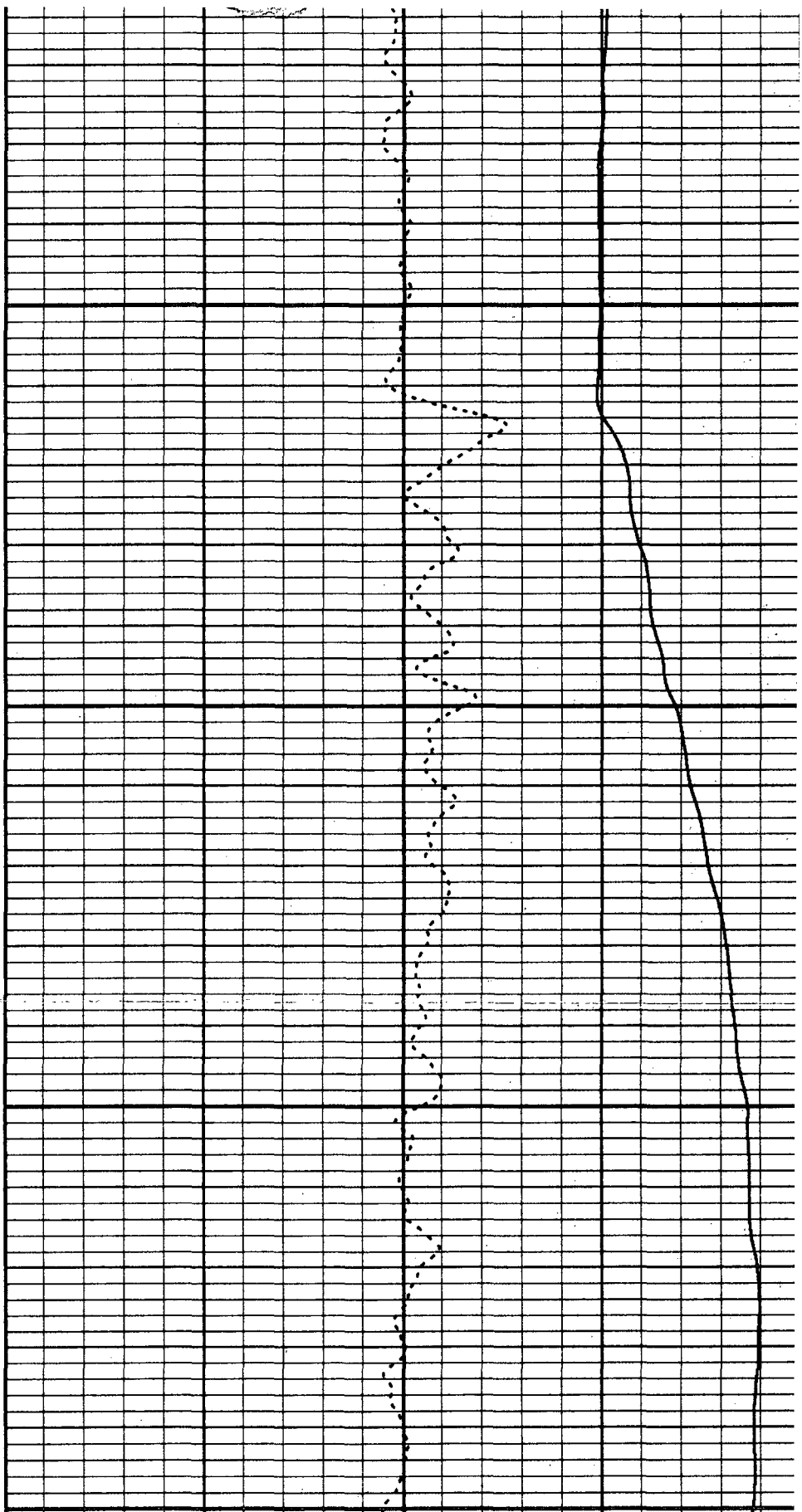
3100





3200

3300



MC: TEMPERATURE
50 DEGREES 150

TEMPERATURE
80 DEGREES 100
DELTA TEMPERATURE
-1.0 1.0

START DEPTH: 16.6 FEET DIRECTION: DOWN DATE: 08/13/97 TIME: 07:21:00 MODE: TRACE PLAYBACK
MIIW1TMP

MAIN PASS
VERSION: 2.42

MASTER CALIBRATION SUMMARY

FILE:

DATE: 08/13/97

TIME: 08:03

VERSION: 2.42

TEMPERATURE #51

DATE: 08/13/97

TIME: 06:37

	MEASURED	UNITS	STANDARD	MINIMUM	MAXIMUM	DEVIATION	UNITS
ZERO	400.0	CPS	40.0	40.0	40.0	0.00	DEGF
PLUS	1400.0	CPS	140.0	140.0	140.0	0.00	DEGF

COMPANY MISSIMER INTERNATIONAL, INC.

WELL MARCO ISLAND IW#1

FIELD MARCO ISLAND STATE FLORIDA

