



**YOUNGQUIST BROTHERS, Inc**  
GEOPHYSICAL LOGGING DIVISION

**HIGH RESOLUTION TEMPERATURE LOG**

RECEIVED  
AUG 10 2004

Company CDM  
Well SCWRF IW-2  
Field COLLIER COUNTY SOUTH  
County COLLIER  
State FLORIDA

Company CDM  
Well SCWRF IW-2  
Field COLLIER COUNTY SOUTH  
County COLLIER  
State FLORIDA

Permanent Datum	PAD	Elevation	
Log Measured From	PAD		K.B. D.F. G.L.
Drilling Measured From	PAD		

Date	10-AUG-2004		
Run Number	RTS		
Depth Driller	3200'		
Depth Logger	2840'		
Bottom Logged Interval	2840'		
Top Log Interval	SURFACE		
Open Hole Size	22"		
Type Fluid	WATER		
Density / Viscosity	NA		
Max. Recorded Temp.	90 F		
Estimated Cement Top	SURFACE		
Time Well Ready	ON ARRIVAL		
Time Logger on Bottom	0830		
Equipment Number	103		
Location	FT. MYERS		
Recorded By	CATHEY		
Witnessed By	R. STROSS		

Run Number	Borehole Record		Tubing Record	
	Bit	From	To	Size
ONE	48.5"	SURFACE	306'	
TWO	12.25"	CASING	1320'	
THREE	40.5"	CASING	1297'	
FOUR	32.5"	CASING	2600'	

Casing Record	Surface String	Prot. String	Production String	Liner	Wdg./ft	
					Top	Bottom
	42"	34"	24"		375" W.T.	300'
					375" W.T.	1290'
					500" W.T.	2590'

<<< Fold Here >>>

All interpretations are opinions based on inferences from electrical or other measurements and we cannot and do not guarantee the accuracy or correctness of any interpretation, and we shall not, except in the case of gross or willful negligence on our part, be liable or responsible for any loss, costs, damages, or expenses incurred or sustained by anyone resulting from any interpretation made by any of our officers, agents or employees. These interpretations are also subject to our general terms and conditions set out in our current Price Schedule.

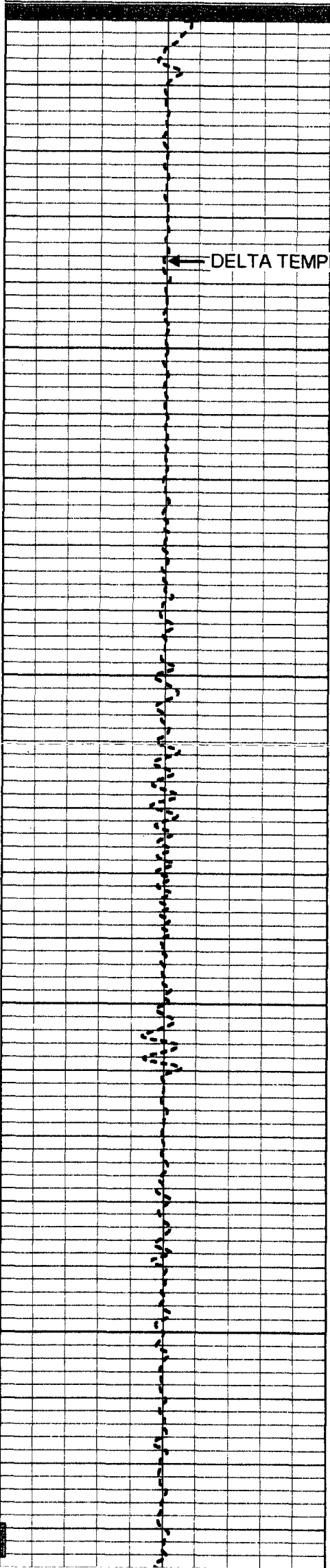
Comments

Entered into  
**OCULUS**  
South District

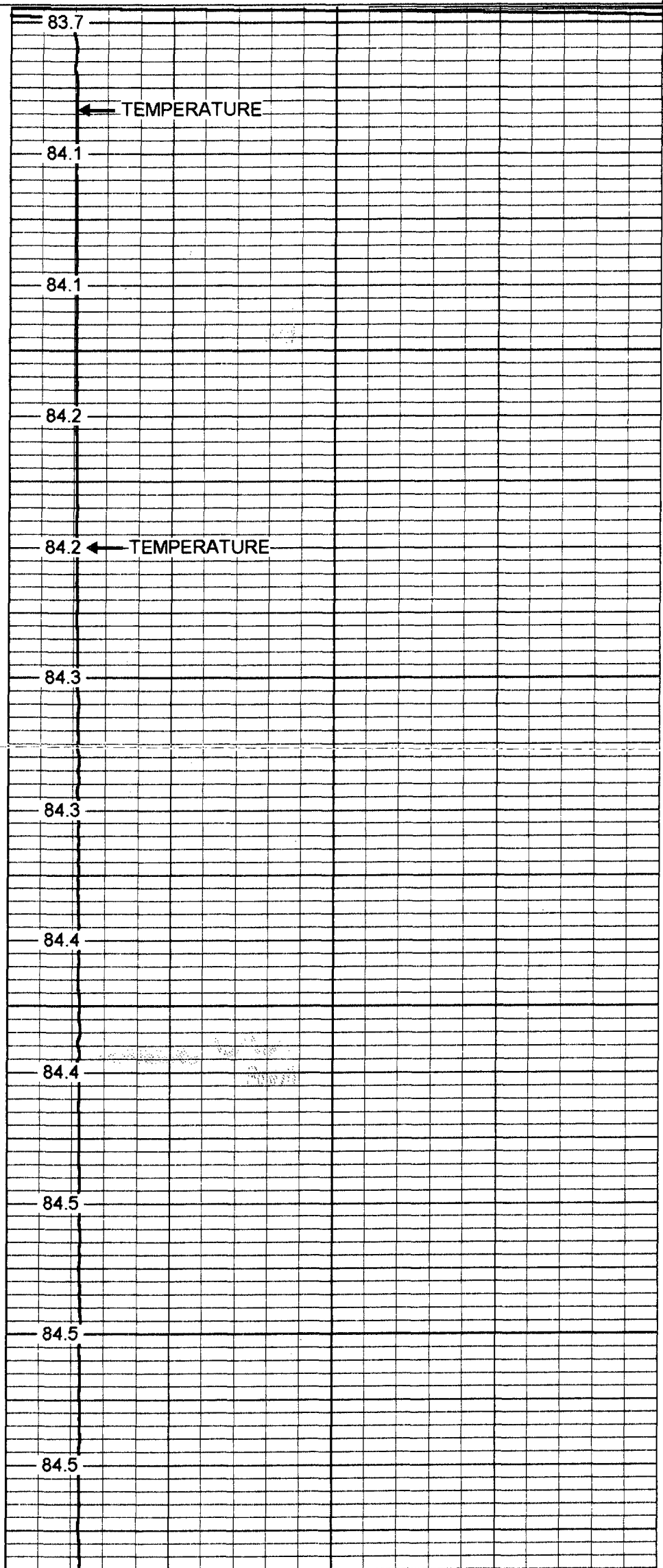
**YOUNGQUIST BROTHERS, Inc**  
GEOPHYSICAL LOGGING DIVISION

**TEMPERATURE**

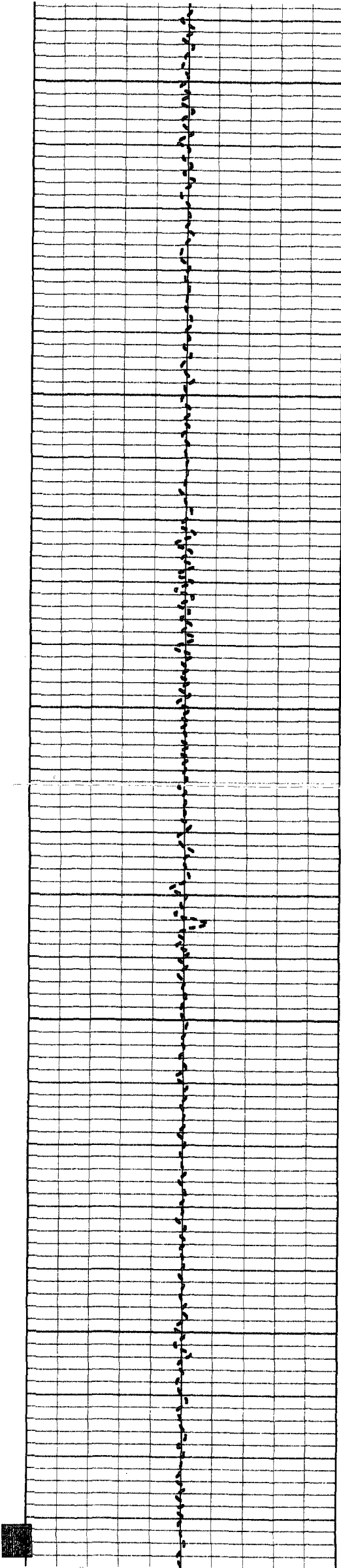
Database File: sciw2rts.db  
Dataset Pathname: pass1  
Presentation Format: temp  
Dataset Creation: Tue Aug 10 07:52:56 2004 by Log 6.2\_B4  
Checked by: [unclear]



0  
50  
100  
150  
200



83.7  
84.1  
84.1  
84.2  
84.2  
84.3  
84.3  
84.4  
84.4  
84.5  
84.5  
84.5



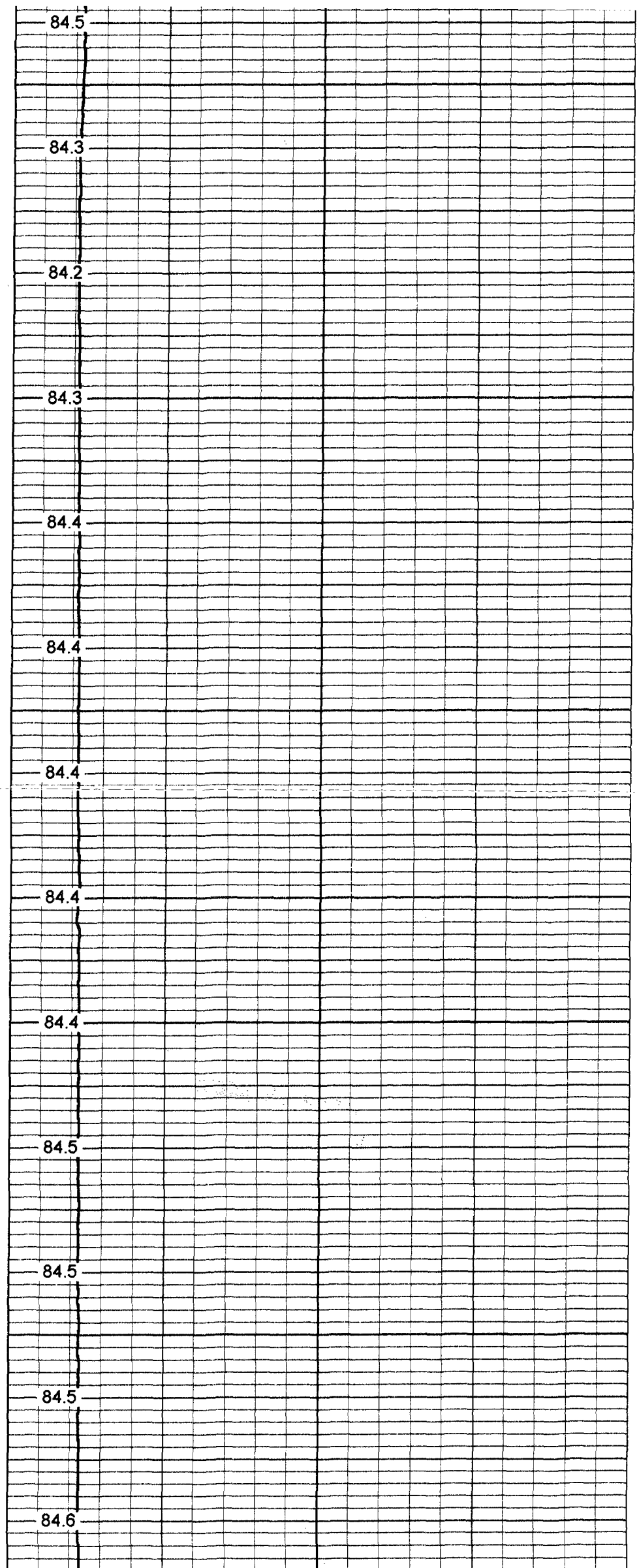
250

300

350

400

450



84.5

84.3

84.2

84.3

84.4

84.4

84.4

84.4

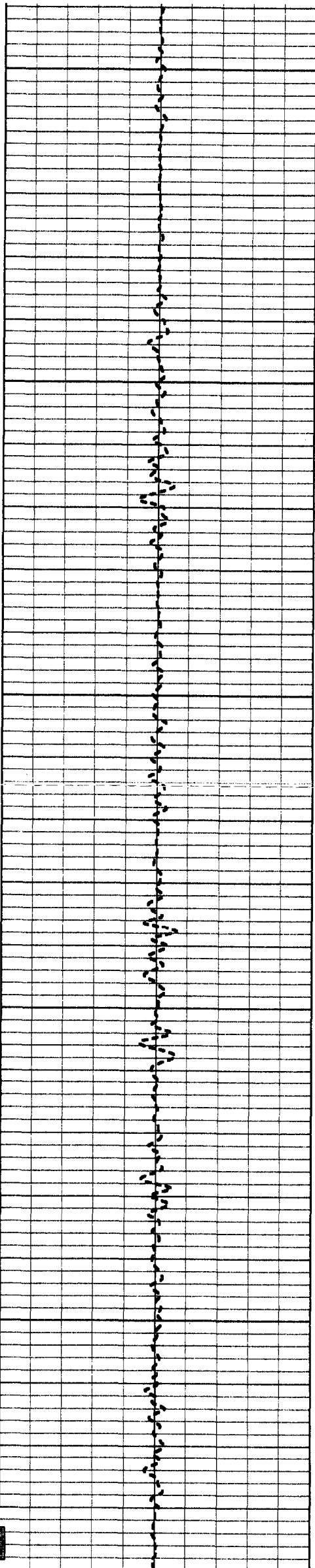
84.4

84.5

84.5

84.5

84.6



500

84.7

84.7

84.8

550

84.9

85.0

600

85.2

85.3

85.5

650

85.7

85.8

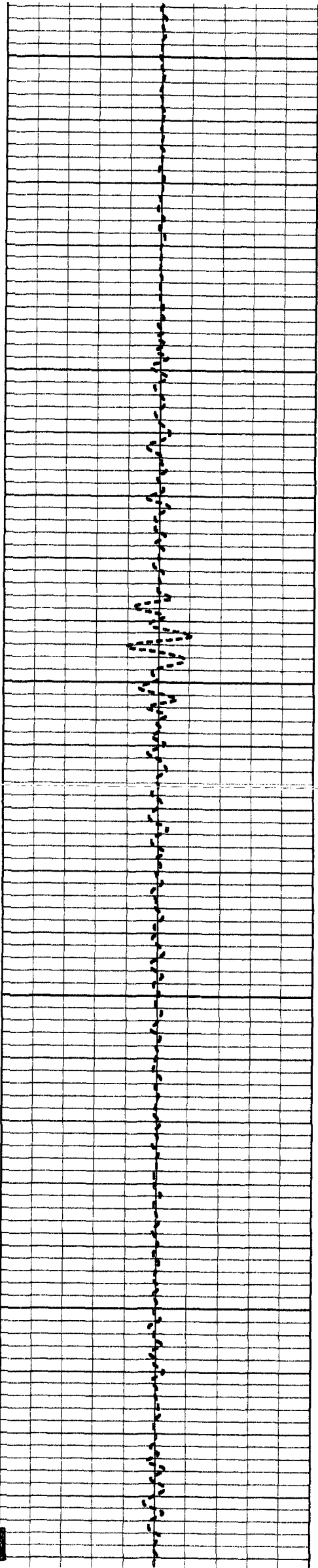
700

86.1

86.3

86.5





750

86.6

86.7

800

86.7

86.9

86.8

850

87.0

87.0

900

87.0

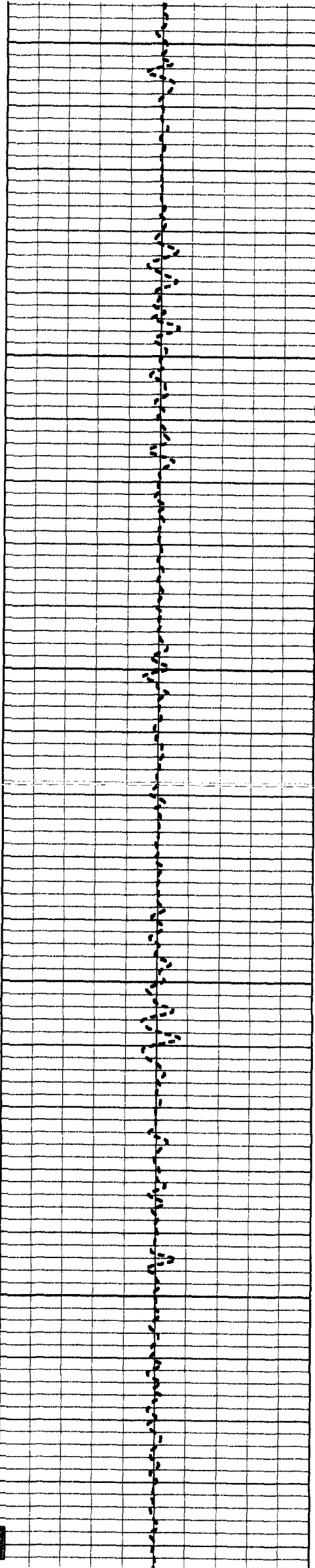
87.0

87.1

950

87.1

87.4



1000

87.4

87.6

87.8

1050

88.0

88.2

1100

88.4

88.4

88.6

1150

88.9

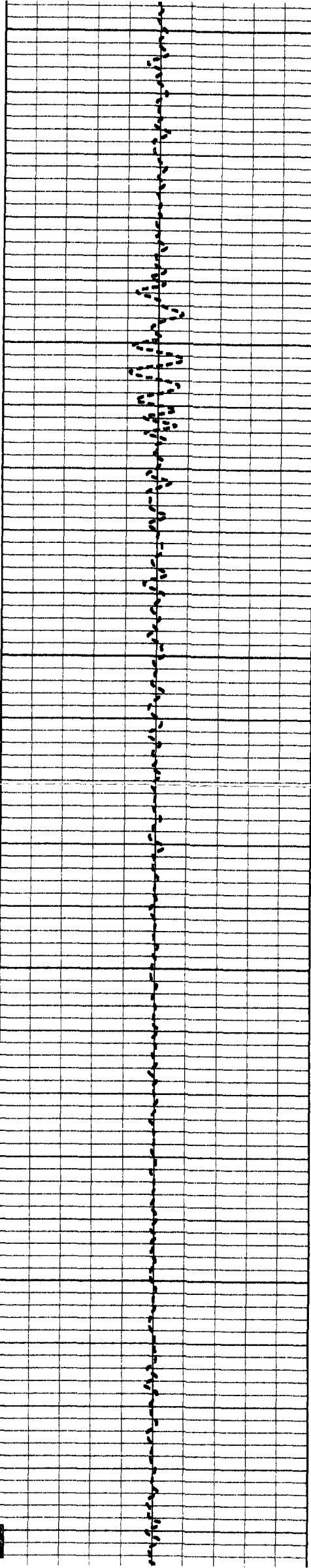
89.0

1200

89.3

89.4

89.4



1250

89.4

89.5

1300

89.5

89.6

89.5

1350

89.5

89.5

1400

89.6

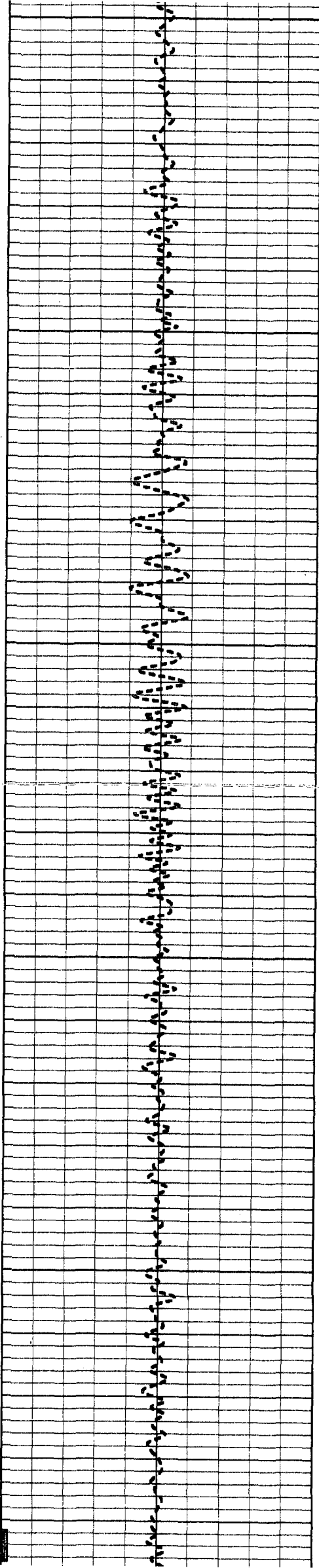
89.6

89.6

1450

89.6

89.6



1500

1550

1600

1650

1700

89.7

89.7

89.7

89.7

89.8

89.7

89.7

89.7

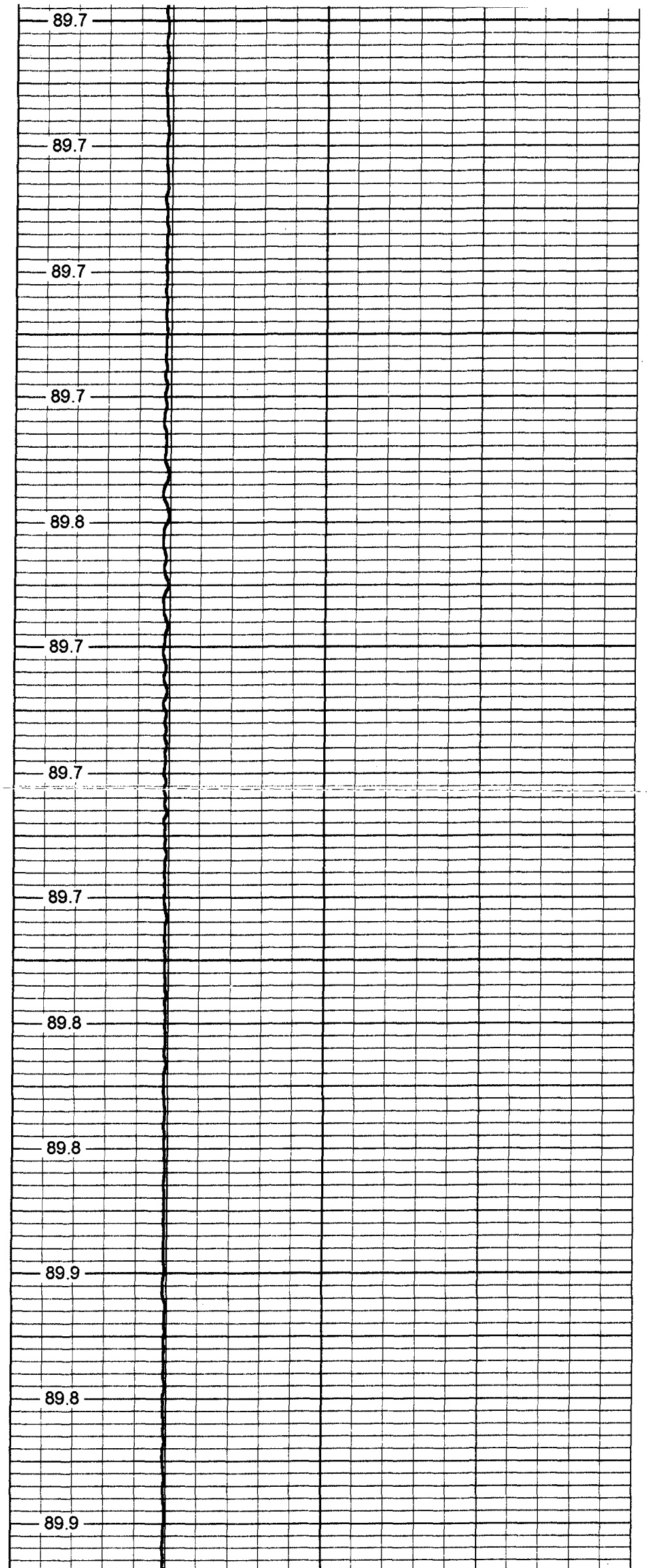
89.8

89.8

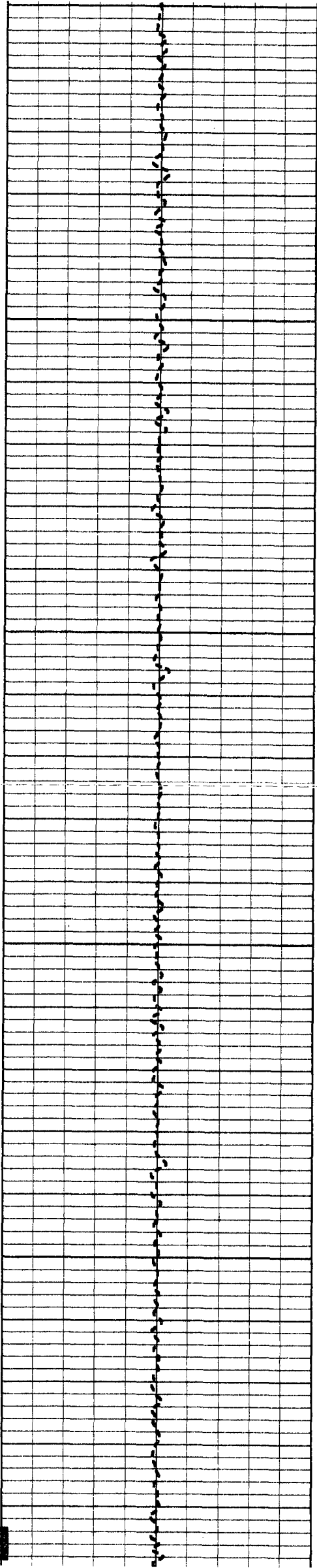
89.9

89.8

89.9



1750



1800

1850

1900

1950

2000

89.9

89.9

89.9

89.9

89.9

89.9

89.9

89.9

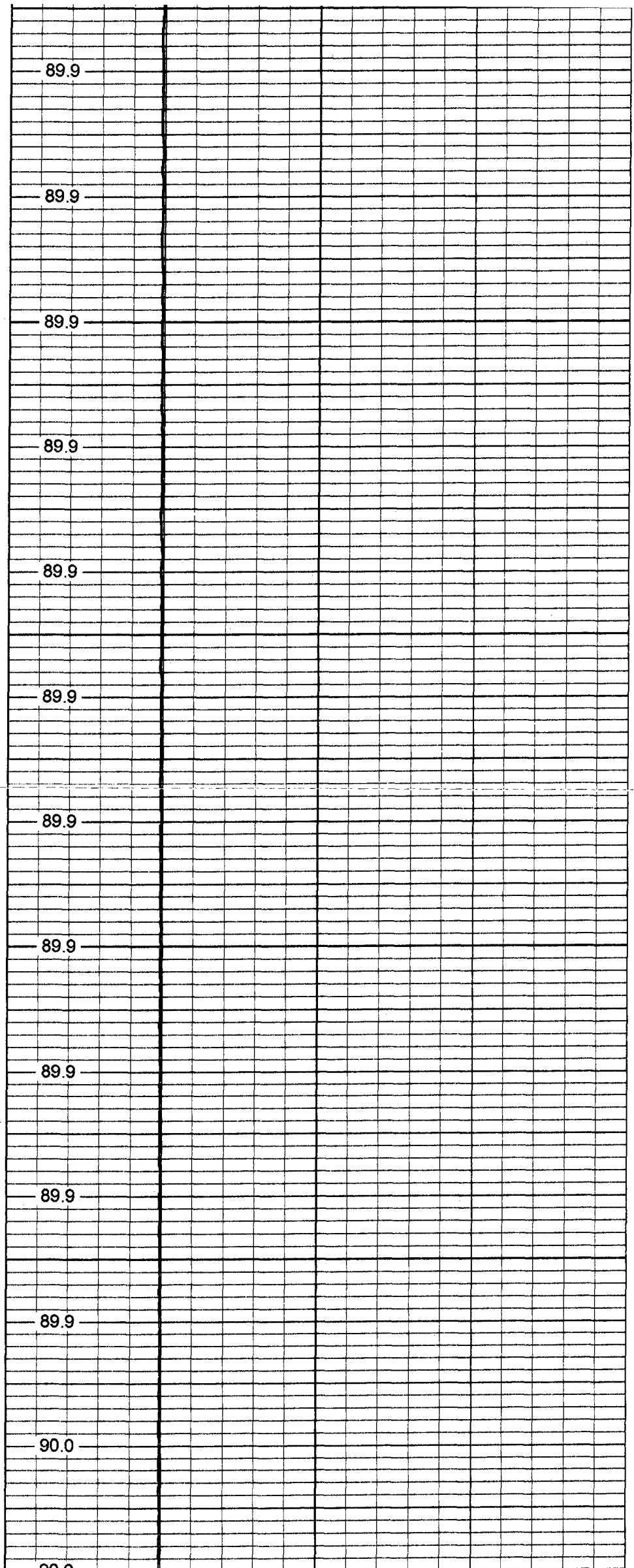
89.9

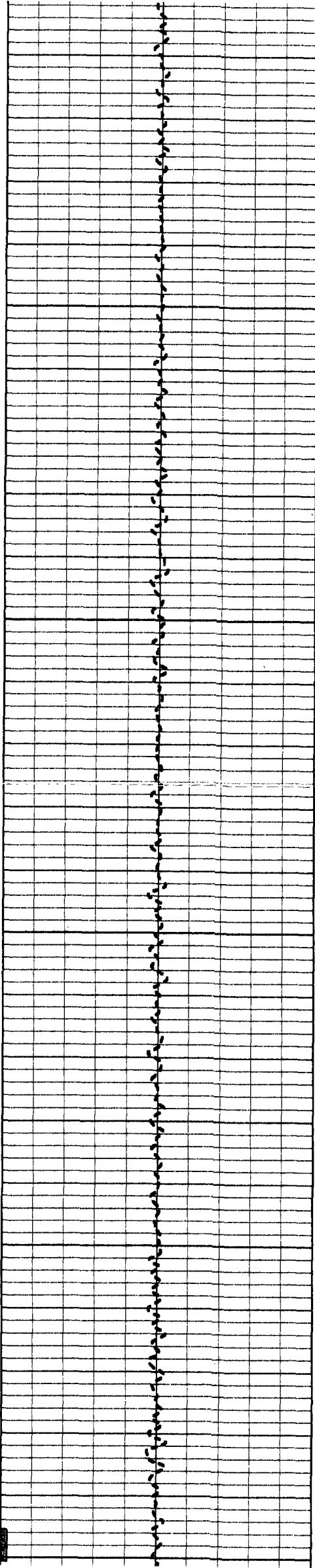
89.9

89.9

90.0

90.0





2050

2100

2150

2200

2250

89.9

89.9

89.9

90.0

89.9

89.9

89.9

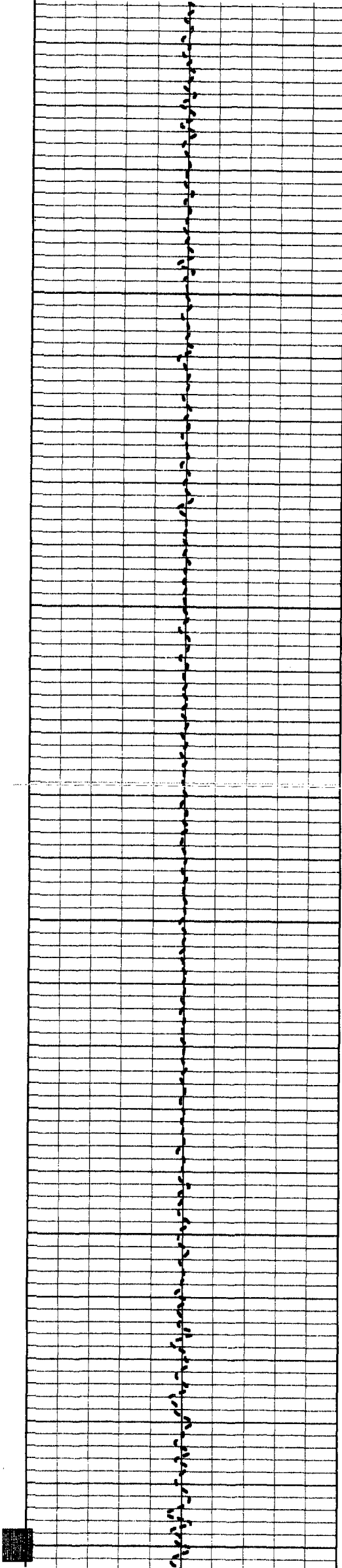
90.0

90.0

90.0

89.9

89.9



2300

2350

2400

2450

2500

90.0

90.0

89.9

89.9

89.9

89.9

89.9

89.9

89.9

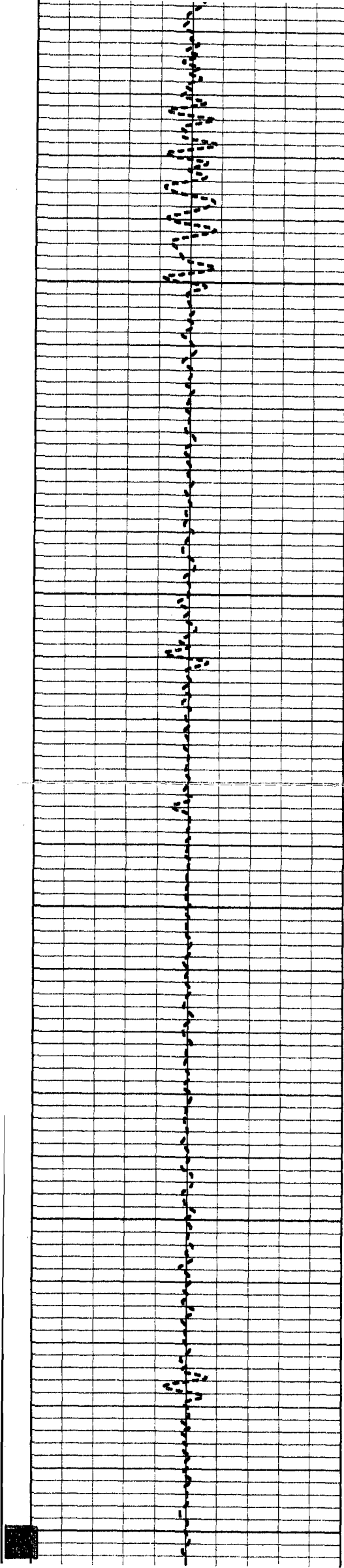
89.9

89.9

89.8

89.8





2550

2600

2650

2700

2750

89.8

89.8

89.7

89.6

89.6

89.4

89.2

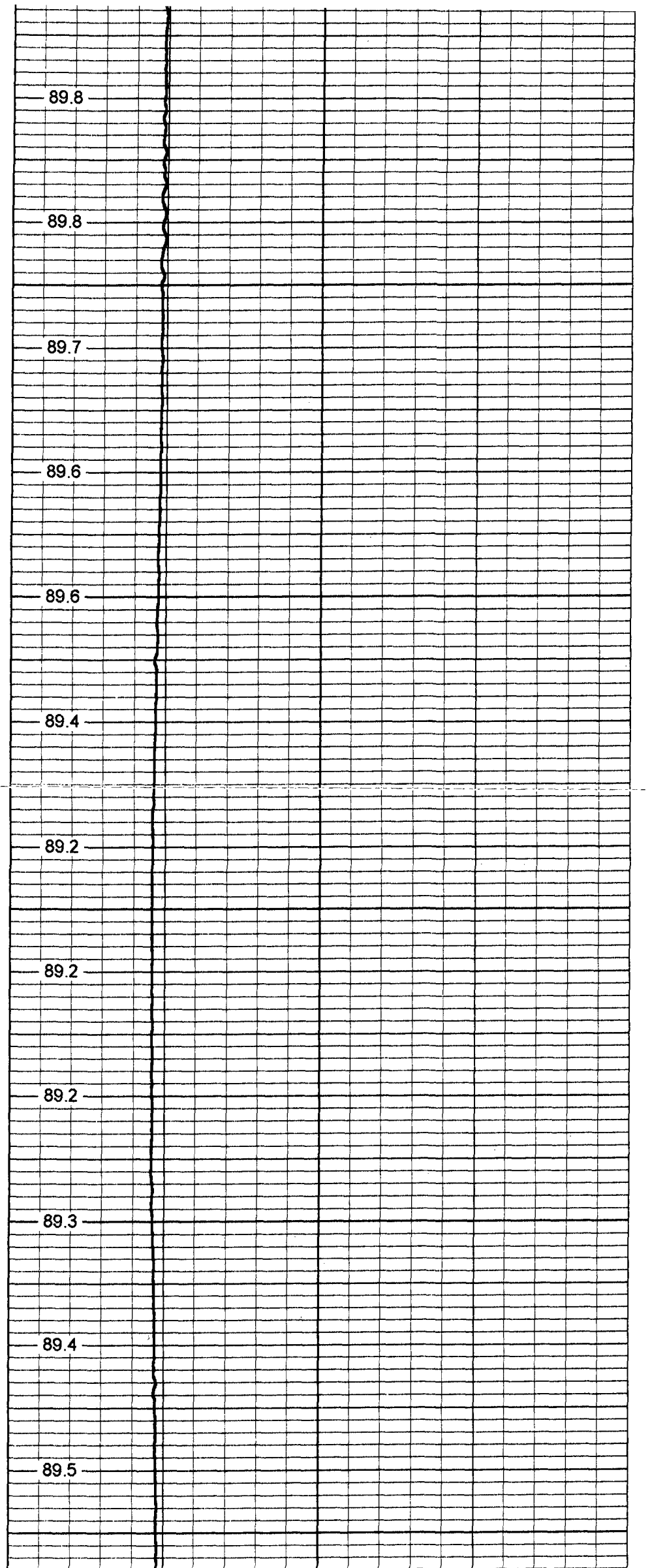
89.2

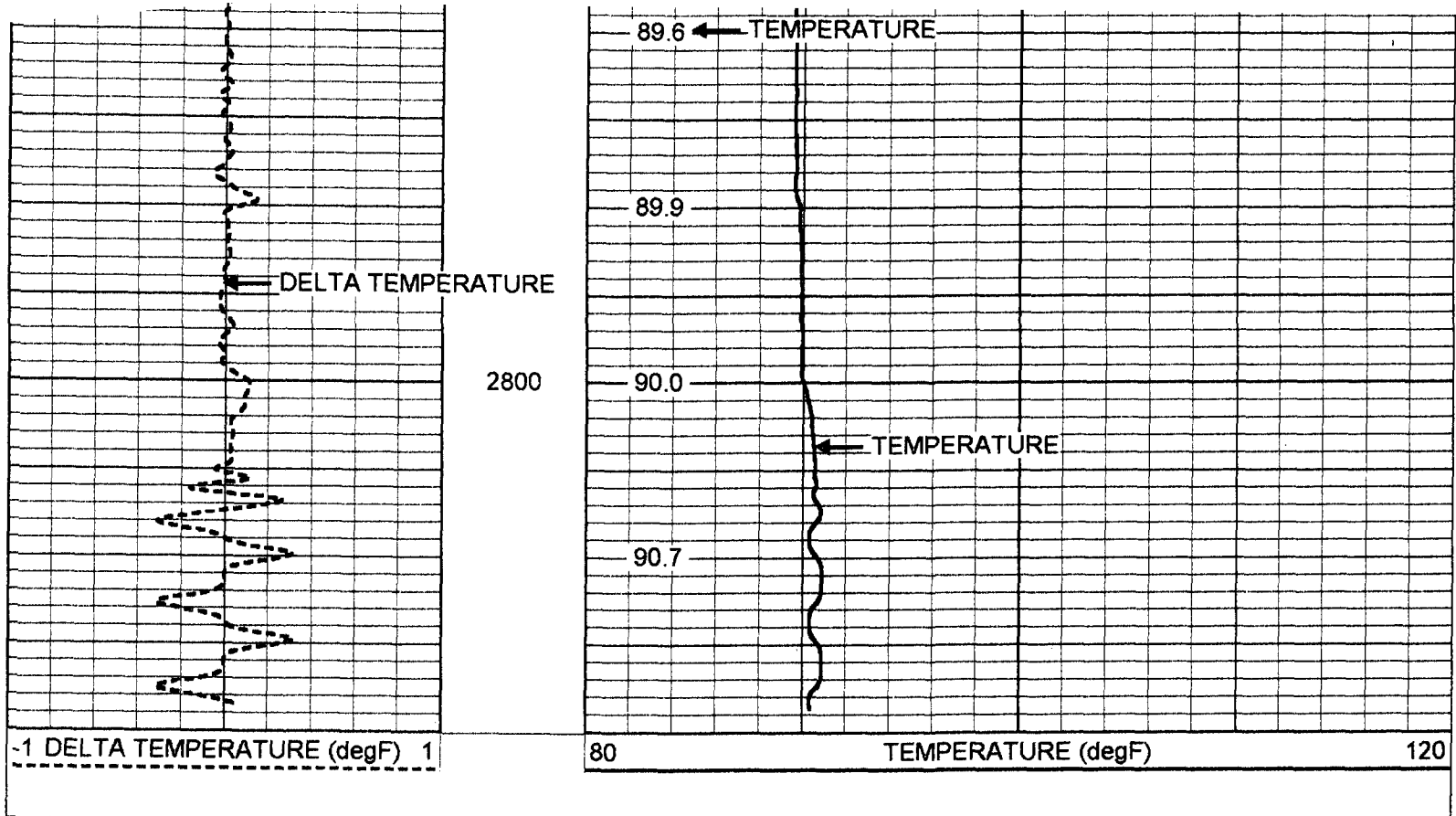
89.2

89.3

89.4

89.5

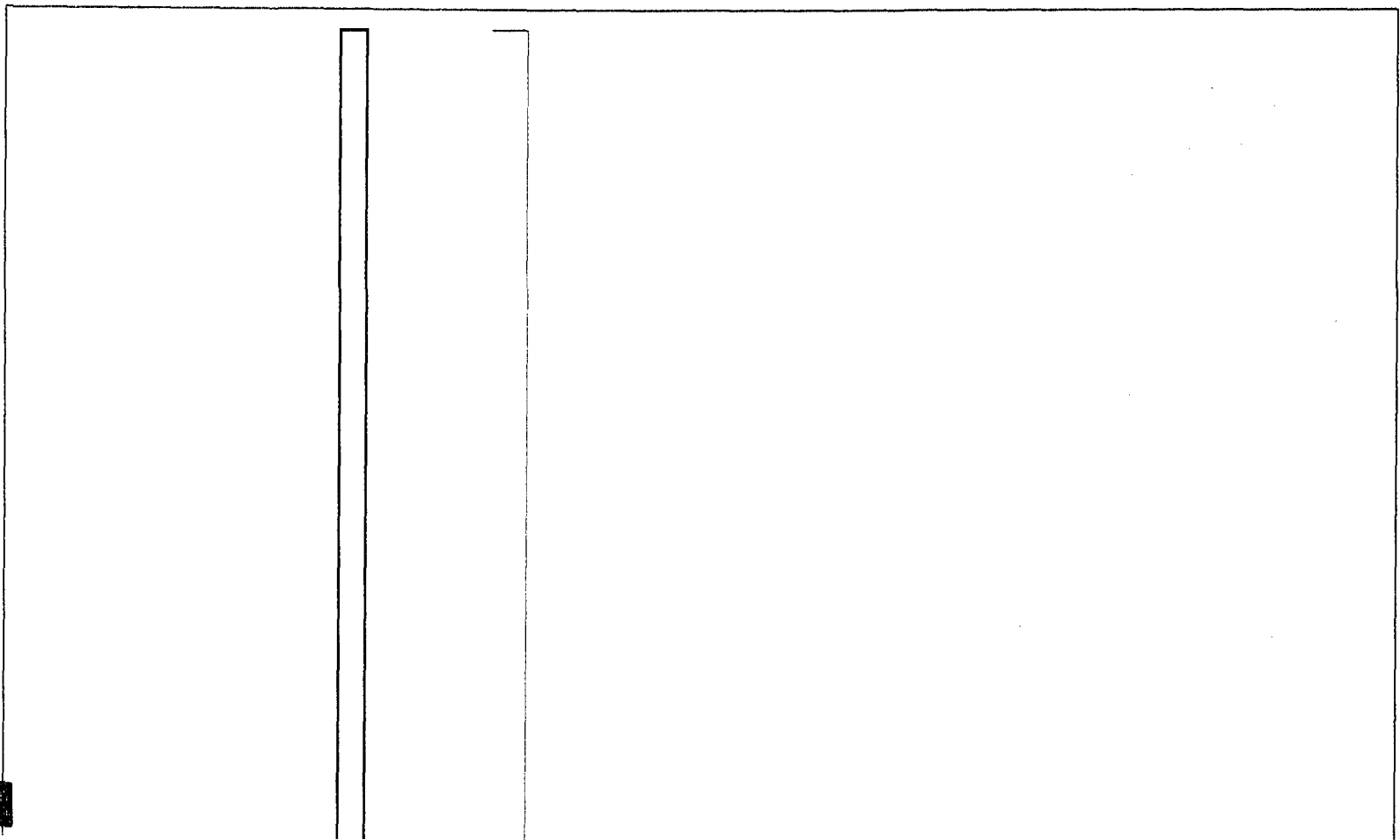




Temperature Calibration Report

Serial Number: 954  
 Tool Model: RTS  
 Performed: Wed Feb 28 14:27:36 2001

Point #	Reading		Reference	
1	338.011	cps	34	degF
2	789.31	cps	78	degF
3	1553.28	cps	152	degF



TEMP-RTS (954)  
70.00 lb 1.69 in OD 25.50 ft

TEMP-0:10 ft

Dataset:	run1/pass1
Total Length:	25.50 ft
Total Weight:	70.00 lb
O.D.	1.69 in