



YOUNGQUIST BROTHERS, Inc
GEOPHYSICAL LOGGING DIVISION

FLUID CONDUCTIVITY TEMPERATURE DEPTH LOG

Company CDM
Well SCWRF IW-2
Field COLLIER COUNTY SOUTH
County COLLIER
State FLORIDA

Company CDM
Well SCWRF IW-2
Field COLLIER COUNTY SCWRF
County COLLIER
State FLORIDA

Location	Permanent Datum	Elevation	Other Services
	Log Measured From		SEE COMMENTS
	Drilling Measured From		

Date	JUNE 16, 2004
Run Number	TEN
Depth Driller	3200'
Depth Logger	3200'
Bottom Logged Interval	3200'
Top Log Interval	CASING
Open Hole Size	12.25"
Type Fluid	WATER
Density / Viscosity	NA
Max. Recorded Temp.	NA
Estimated Cement Top	NA
Time Well Ready	0500
Time Logger on Bottom	0530
Equipment Number	103
Location	FT. MYERS
Recorded By	CATHEY
Witnessed By	R. STROSS

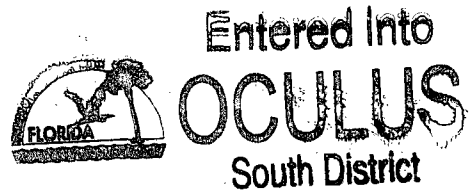
Borehole Record		Tubing Record	
Run Number	Bit	From	To
ONE	48.5"	SURFACE	306'
TWO	12.25"	CASING	1320'
THREE	40.5"	CASING	1297'
FOUR	12.25"	CASING	3200'

Casing Record	Size	Wd/ft	Top	Bottom
Surface String	42"	375" W.T.	SURFACE	300'
Prot. String	34"	375" W.T.	SURFACE	1290'
Production String				
Liner				

All interpretations are opinions based on inferences from electrical or other measurements and we cannot and do not guarantee the accuracy or correctness of any interpretation, and we shall not, except in the case of gross or willful negligence on our part, be liable or responsible for any loss, costs, damages, or expenses incurred or sustained by anyone resulting from any interpretation made by any of our officers, agents or employees. These interpretations are also subject to our general terms and conditions set out in our current Price Schedule.

Comments

OTHER SERVICES:
X-Y CALIPER / GAMMA RAY
DUAL INDUCTION
BOREHOLE COMPENSATED SONIC FLOWMETER
VIDEO
DYNAMIC FLOWRATE=



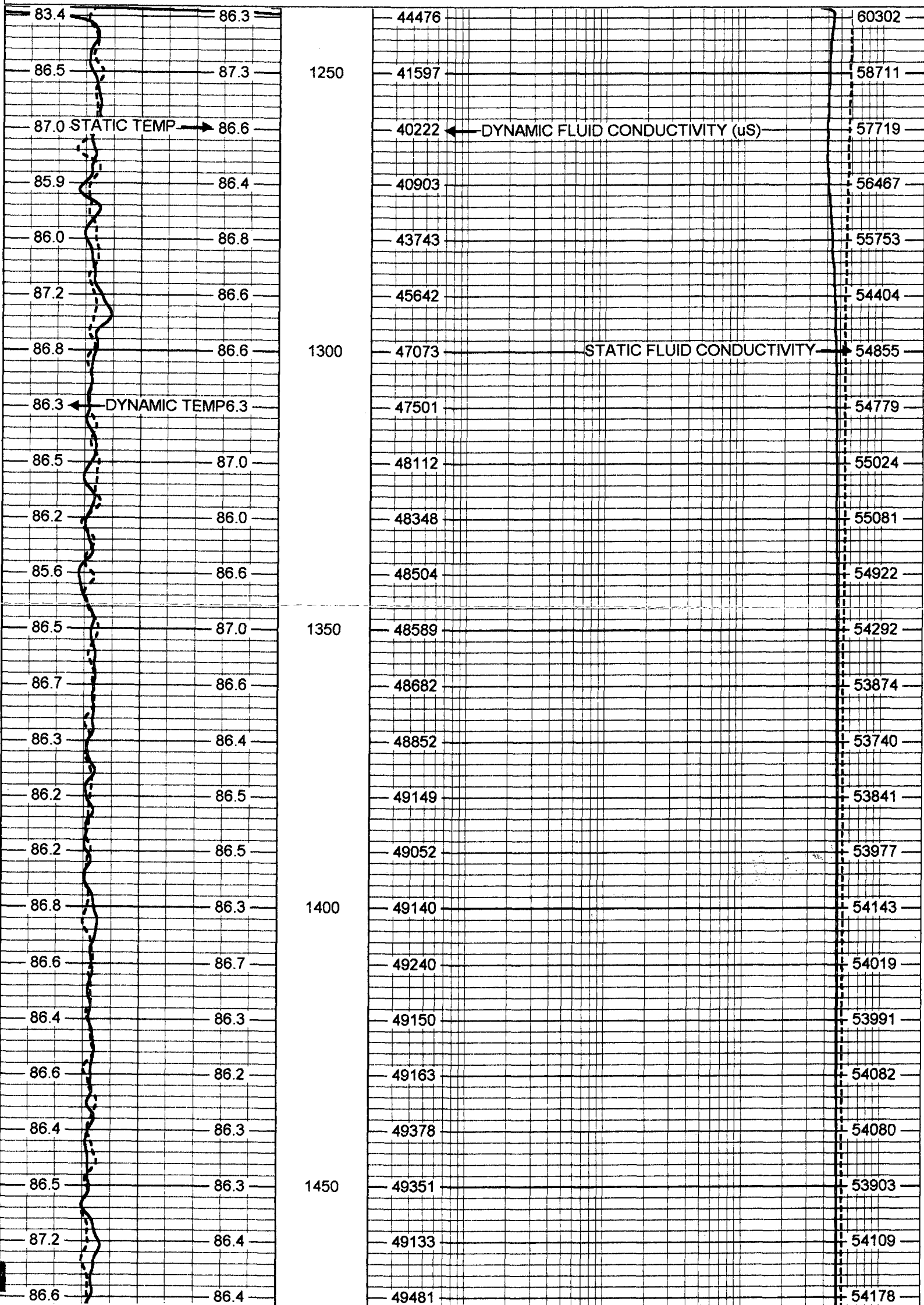
YOUNGQUIST BROTHERS, Inc
GEOPHYSICAL LOGGING DIVISION

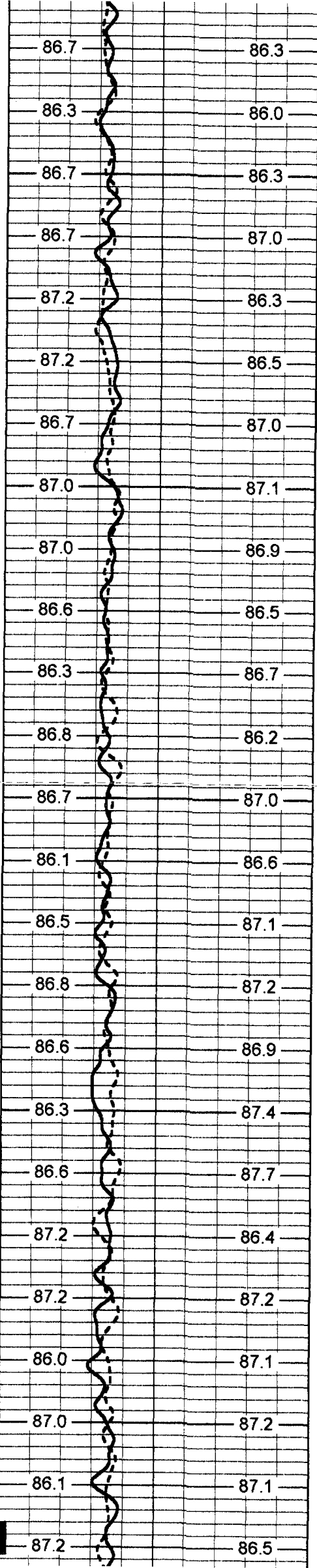
MERGED FCT

Database File: scwrw2.db
Dataset Pathname: run10/pass12
Presentation Format: frt_mg
Dataset Creation: Wed Jun 16 15:56:18 2004 by Log 6.2_B4

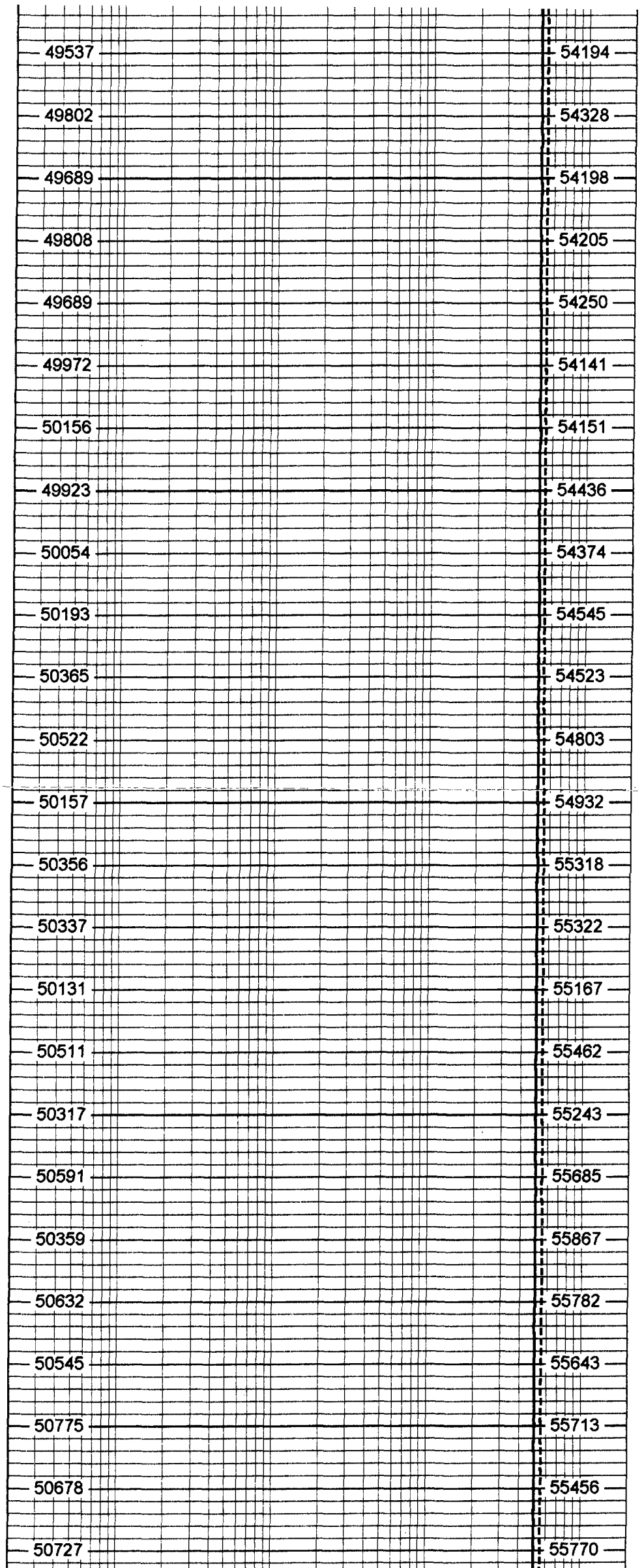
80 DYNAMIC TEMP (degF) 100
 80 STATIC TEMP (degF) 100

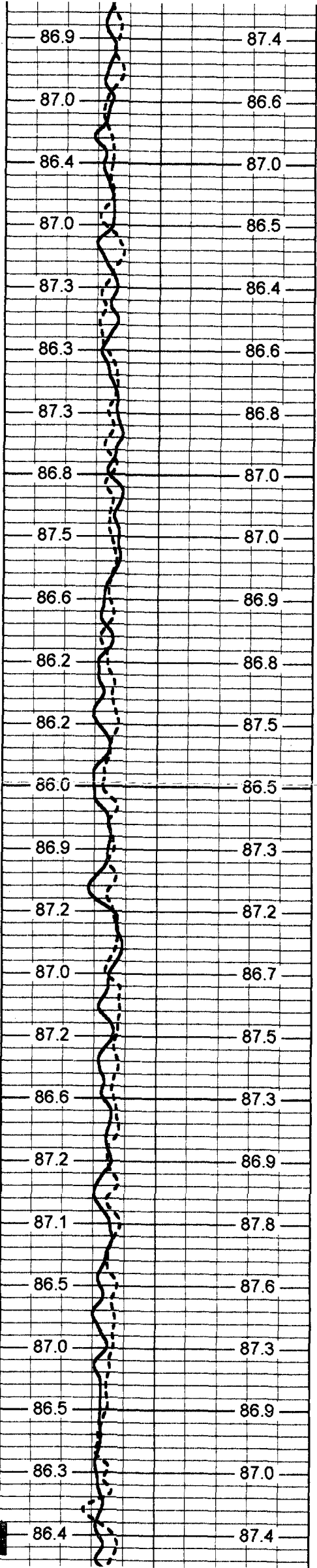
20 DYNAMIC FLUID CONDUCTIVITY (uS) 200000
 20 STATIC FLUID CONDUCTIVITY (uS) 200000





1500
1550
1600
1650
1700





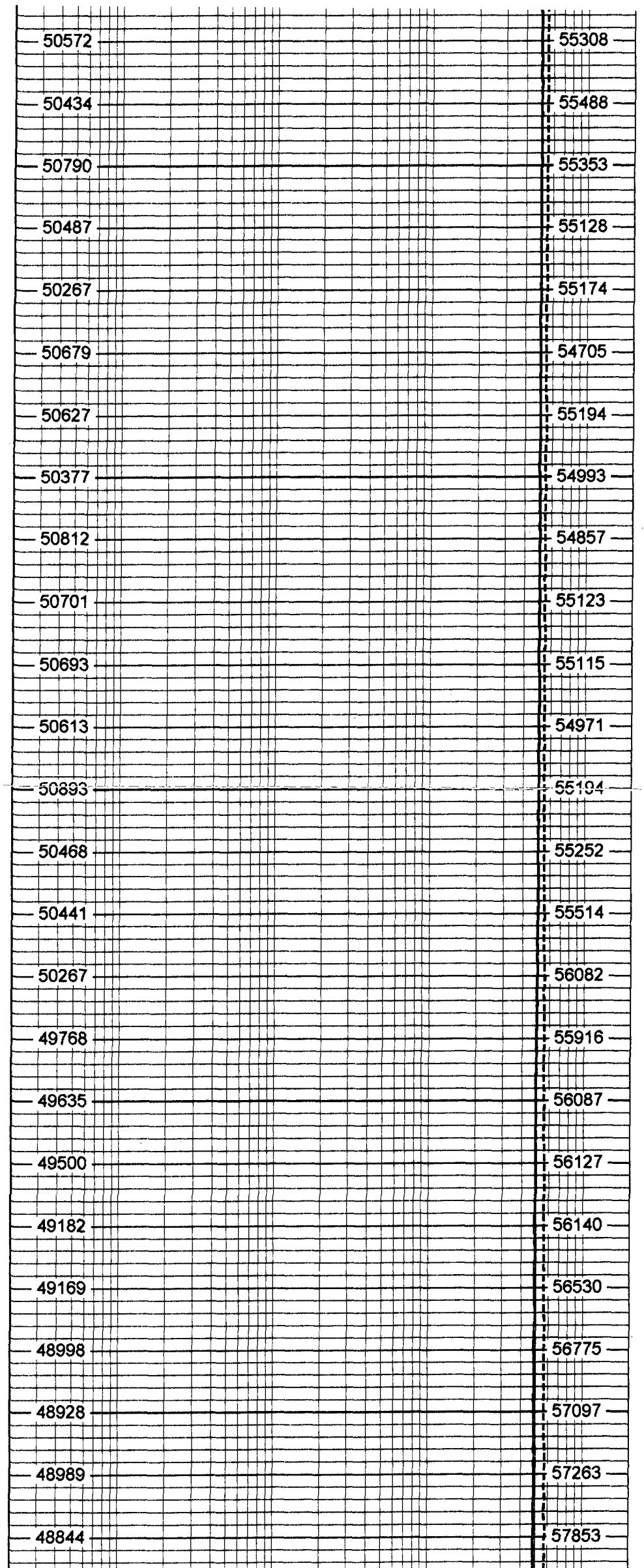
1750

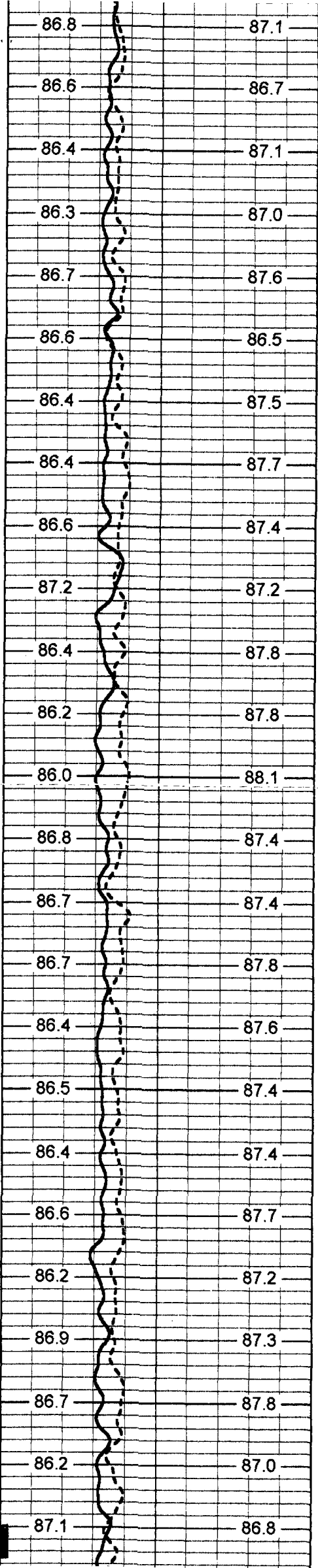
1800

1850

1900

1950





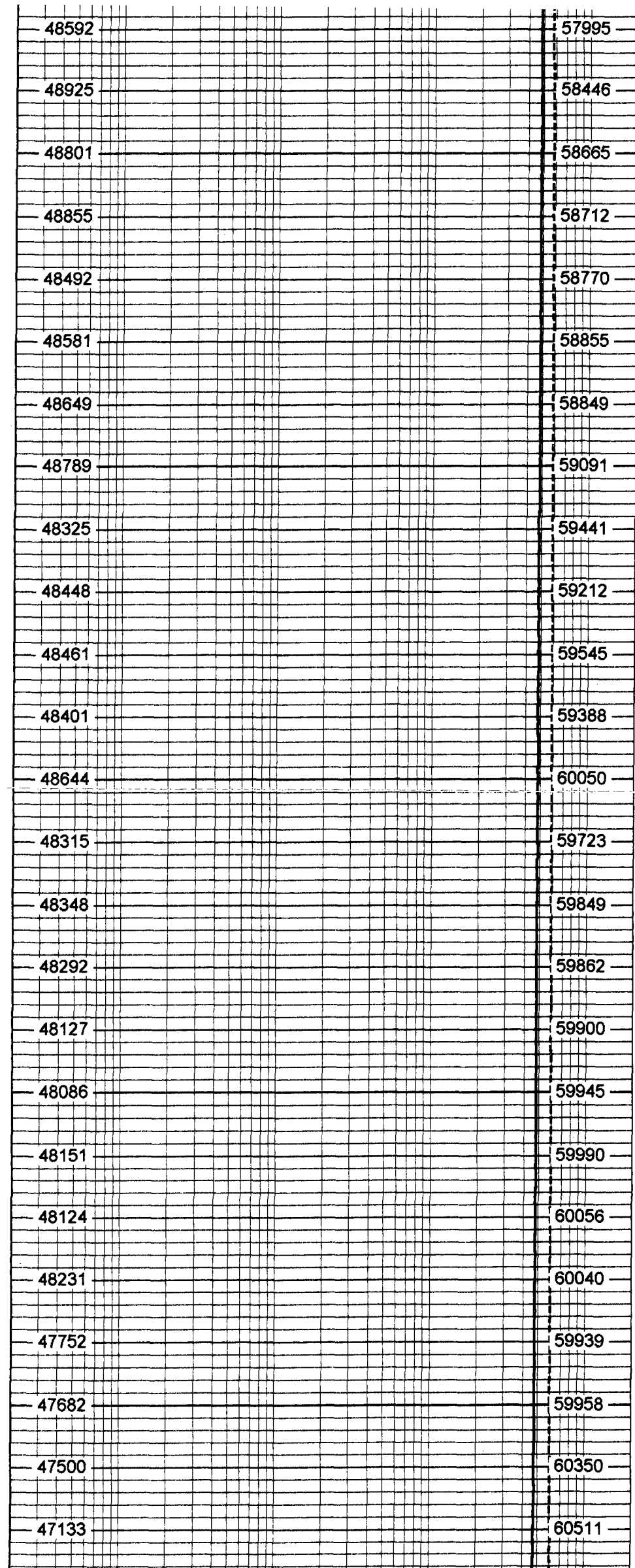
2000

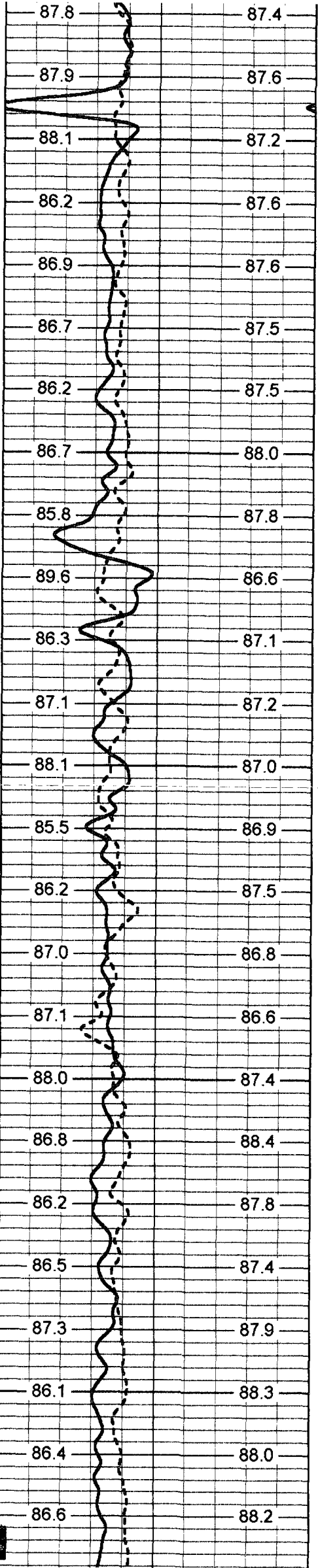
2050

2100

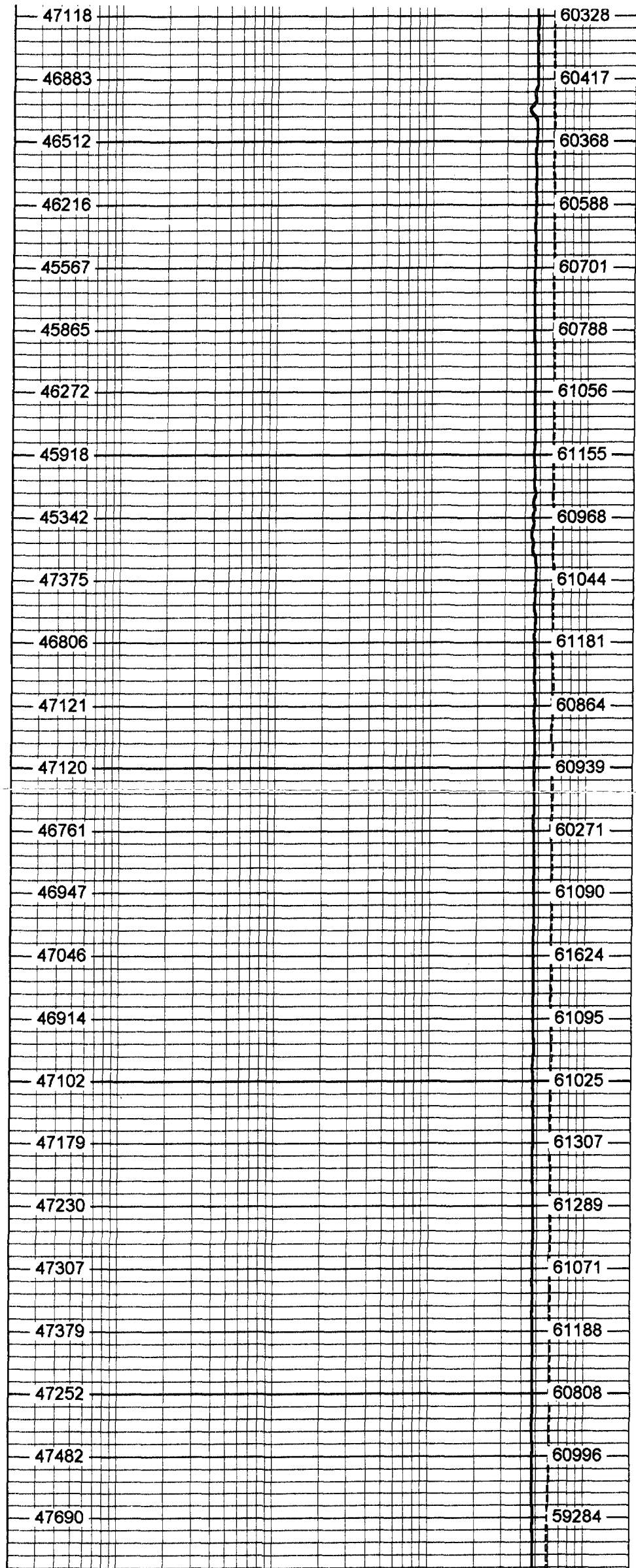
2150

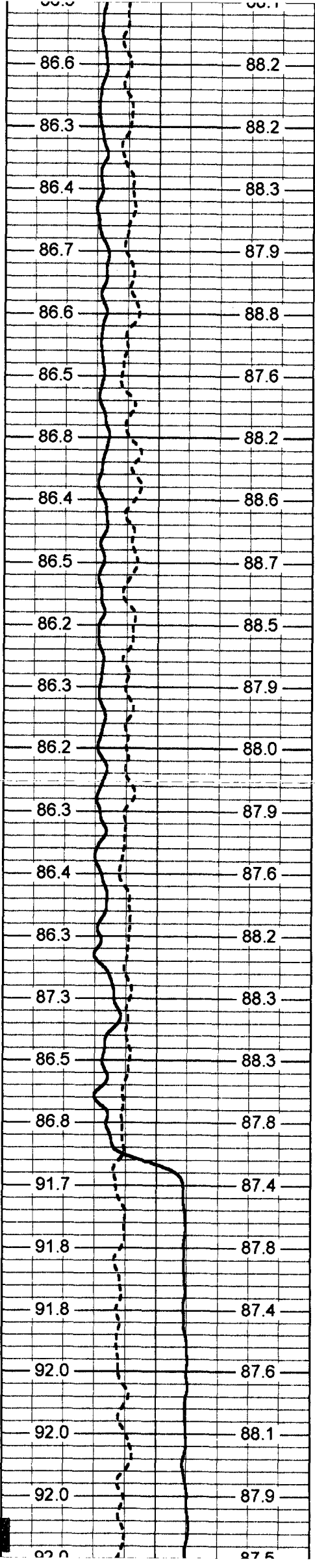
2200





2250
2300
2350
2400
2450





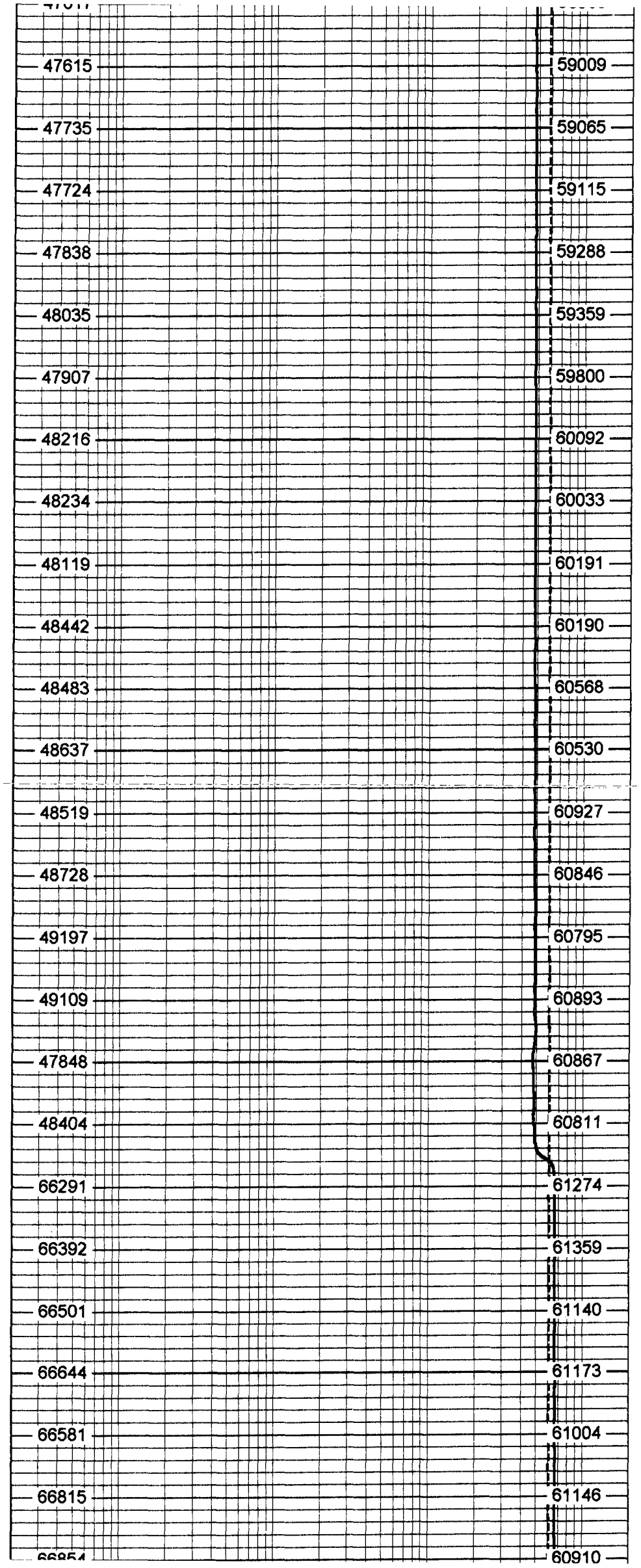
2500

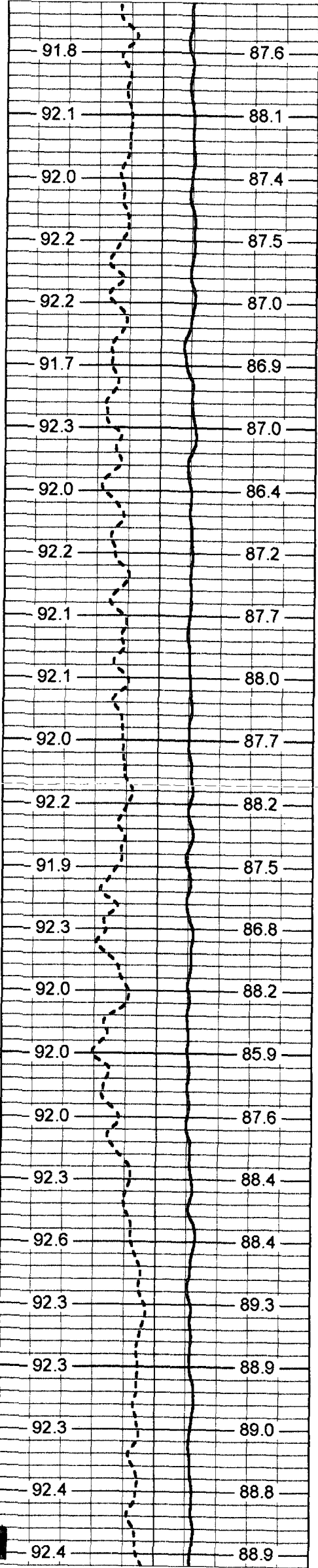
2550

2600

2650

2700





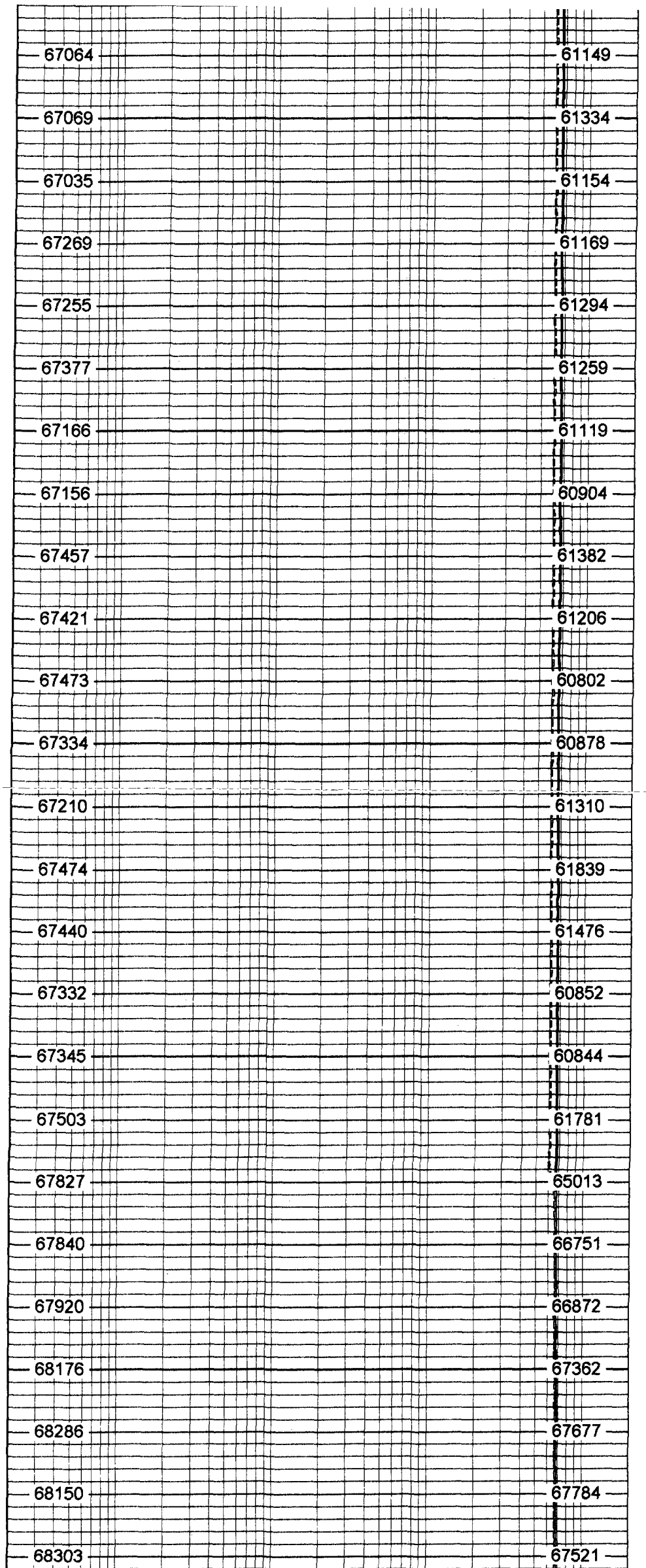
2750

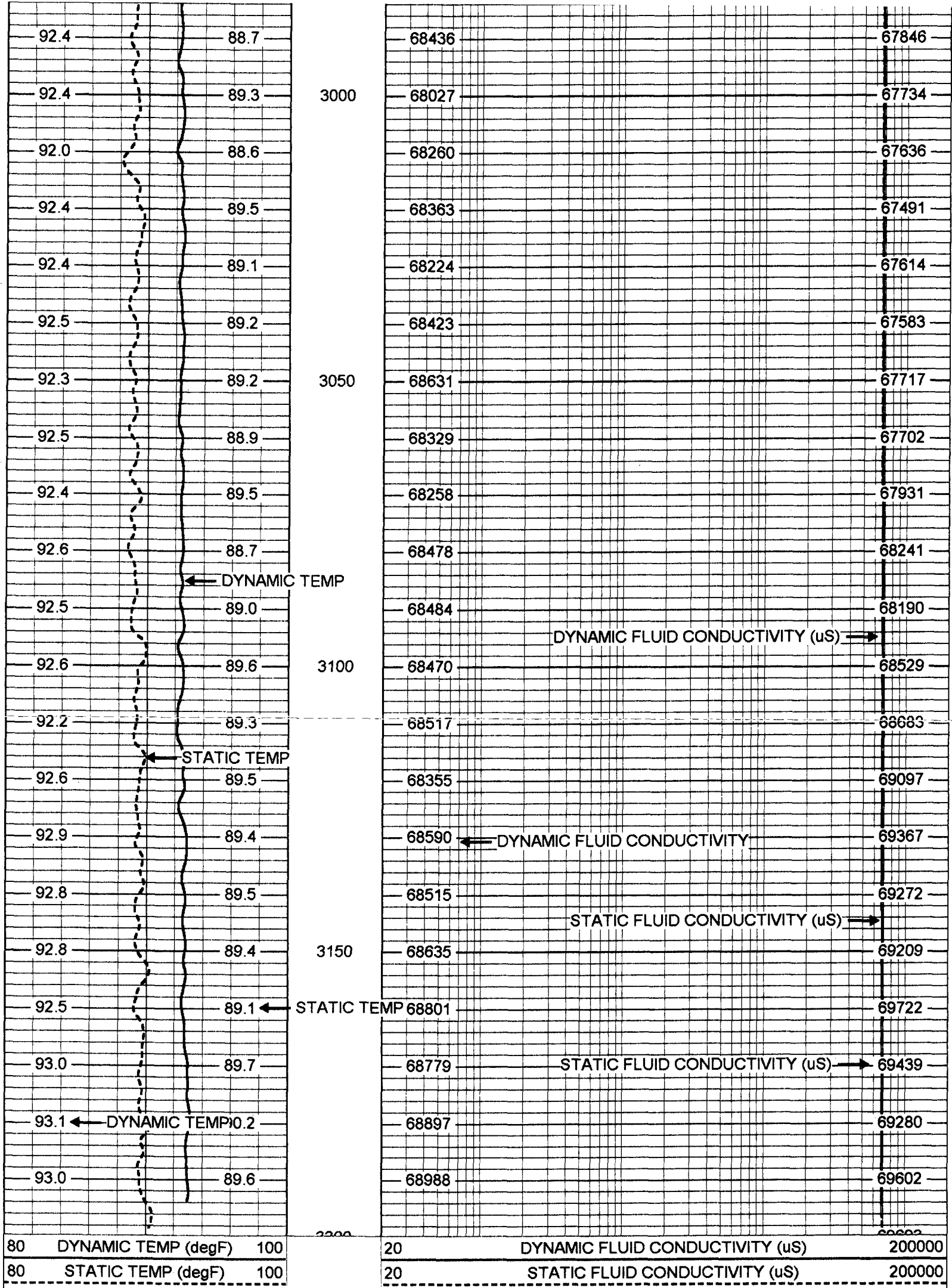
2800

2850

2900

2950





Tool Model:
Performed:

SONDEX
Thu Apr 22 10:00:02 2004

Point #	Reading		Reference
1	31.544	cps	1000.000
2	154.182	cps	10000.000
3	375.636	cps	25000.000
4	799.291	cps	50000.000
5		cps	
6		cps	

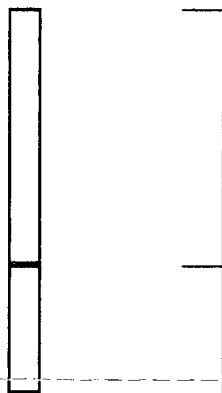
Temperature Calibration Report

Serial Number:
Tool Model:
Performed:

30
SONDEX
Thu Apr 22 10:07:24 2004

Point #	Reading		Reference	
1	158.554	cps	41	degF
2	306.398	cps	76	degF
3	634.807	cps	142	degF

TEMP 0.70 ft
FRES 0.50 ft



Dataset: run10/pass12
Total Length: 1.80 ft
Total Weight: 20.00 lb
O.D. 1.69 in