



YOUNGQUIST BROTHERS, Inc
GEOPHYSICAL LOGGING DIVISION

FLUID CONDUCTIVITY TEMPERATURE LOG

Company CDM
Well SCWRF IW-2
Field COLLIER COUNTY SOUTH
County COLLIER
State FLORIDA

Company CDM
Well SCWRF IW-2
Field COLLIER COUNTY SCWRF
County COLLIER
State FLORIDA

Location	Permanent Datum	Elevation	Other Services
	Log Measured From		SEE COMMENTS
	Drilling Measured From		
	PAD		
	PAD		
	PAD		

Date	JUNE 16, 2004	
Run Number	TEN	
Depth Driller	3200'	
Depth Logger	3200'	
Bottom Logged Interval	3200'	
Top Log Interval	CASING	
Open Hole Size	12.25"	
Type Fluid	WATER	
Density / Viscosity	NA	
Max. Recorded Temp.	NA	
Estimated Cement Top	NA	
Time Well Ready	0500	
Time Logger on Bottom	0530	
Equipment Number	103	
Location	FT. MYERS	
Recorded By	CATHY	
Witnessed By	R. STROSS	

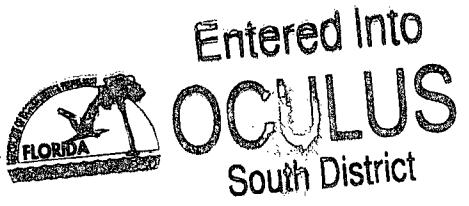
Borehole Record			Tubing Record			
Run Number	Bit Size	From	To	Weight	From	To
ONE	48.5"	SURFACE	306'			
TWO	12.25"	CASING	1320'			
THREE	40.5"	CASING	1297'			
FOUR	12.25"	CASING	3200'			
Casing Record			Tubing Record			
Surface String	42"	Wgt/ft	375" W.T.	Top	Bottom	
Prot. String	34"		375" W.T.	SURFACE	300'	
Production String				SURFACE	1290'	
Liner						

<<< Fold Here >>>

All interpretations are opinions based on inferences from electrical or other measurements and we cannot and do not guarantee the accuracy or correctness of any interpretation, and we shall not, except in the case of gross or willful negligence on our part, be liable or responsible for any loss, costs, damages, or expenses incurred or sustained by anyone resulting from any interpretation made by any of our officers, agents or employees. These interpretations are also subject to our general terms and conditions set out in our current Price Schedule.

Comments

OTHER SERVICES:
X-Y CALIPER / GAMMA RAY
DUAL INDUCTION
BOREHOLE COMPENSATED SONIC FLOWMETER
VIDEO
DYNAMIC FLOWRATE=



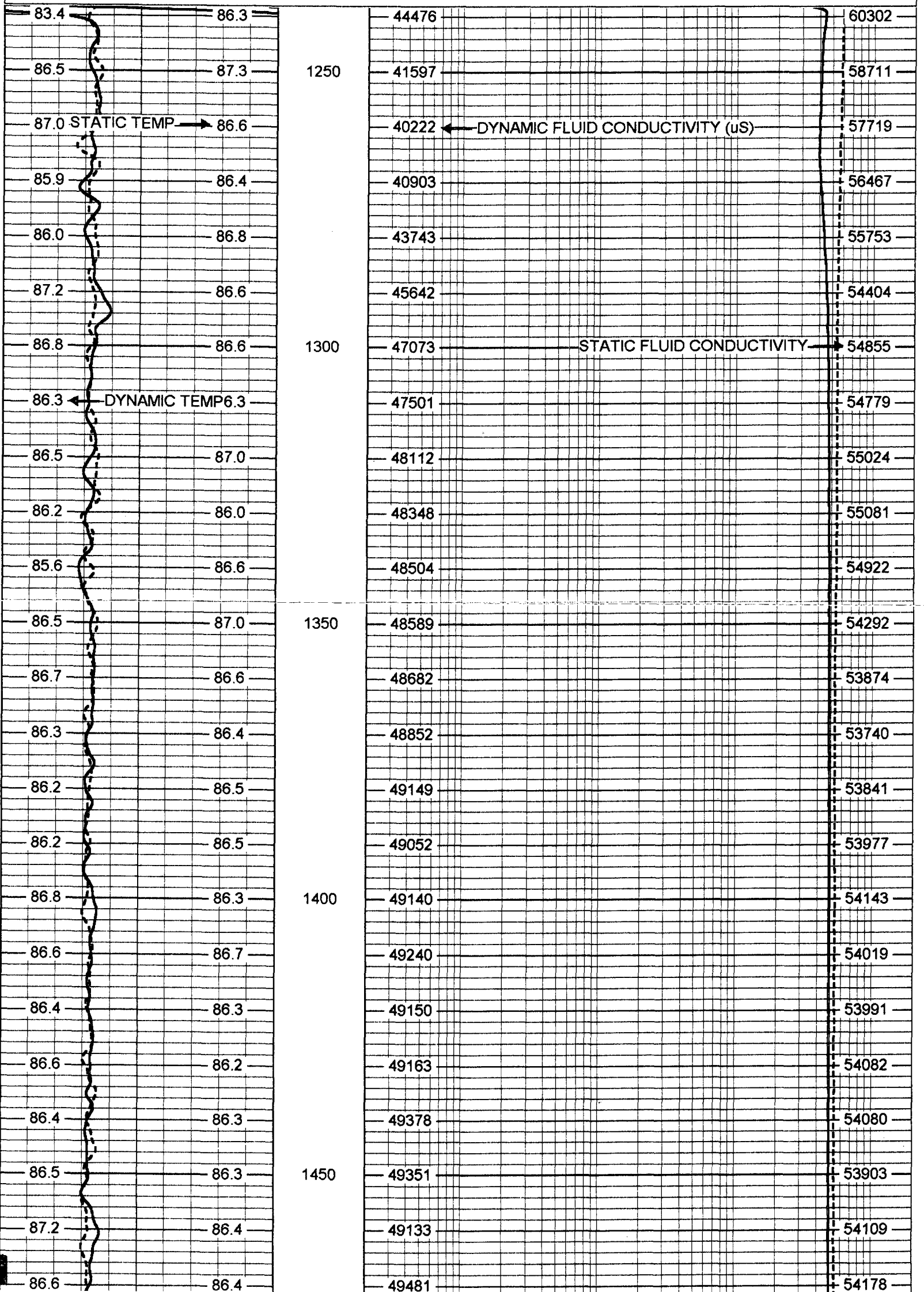
YOUNGQUIST BROTHERS, Inc
GEOPHYSICAL LOGGING DIVISION

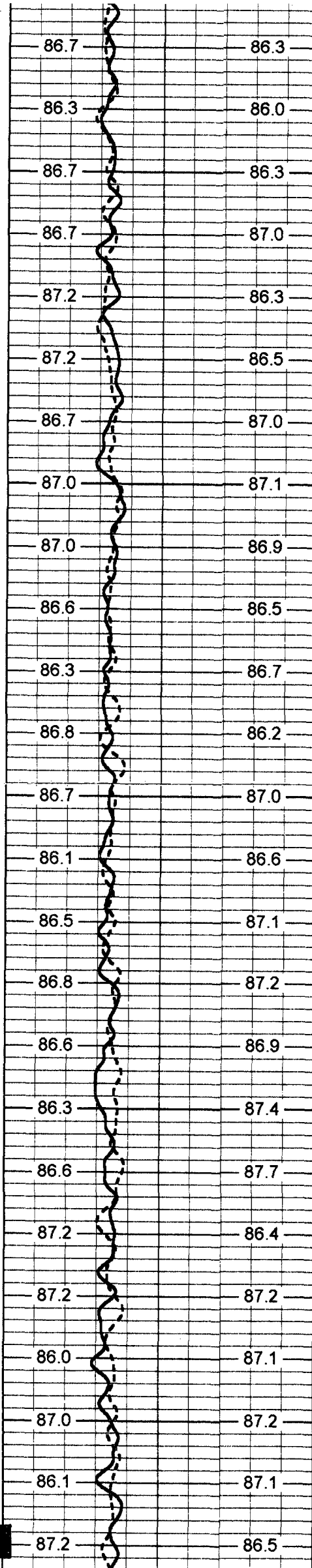
MERGED FCT

Database File: scwrfiw2.db
Dataset Pathname: run10/pass12
Presentation Format: frt_mg
Dataset Creation: Wed Jun 16 15:56:18 2004 by Log 6.2_B4

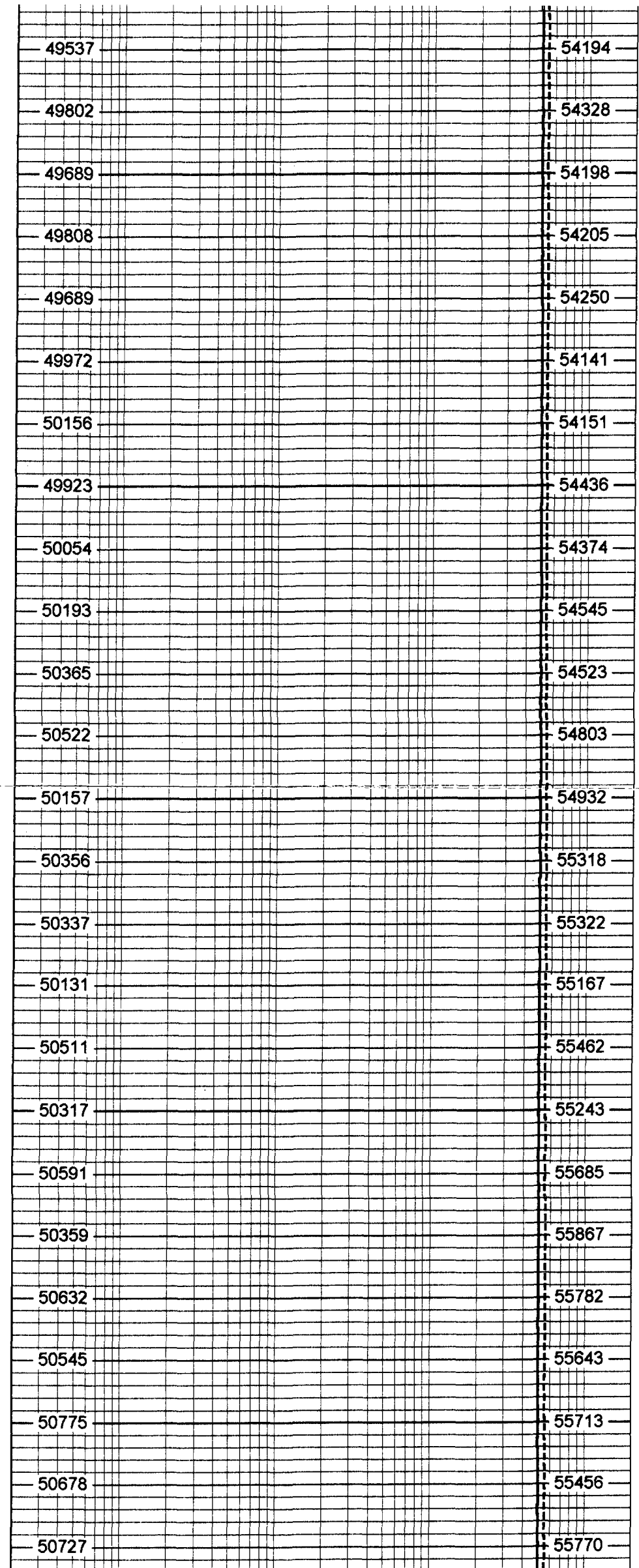
80 DYNAMIC TEMP (degF) 100
 80 STATIC TEMP (degF) 100

20 DYNAMIC FLUID CONDUCTIVITY (uS) 200000
 20 STATIC FLUID CONDUCTIVITY (uS) 200000

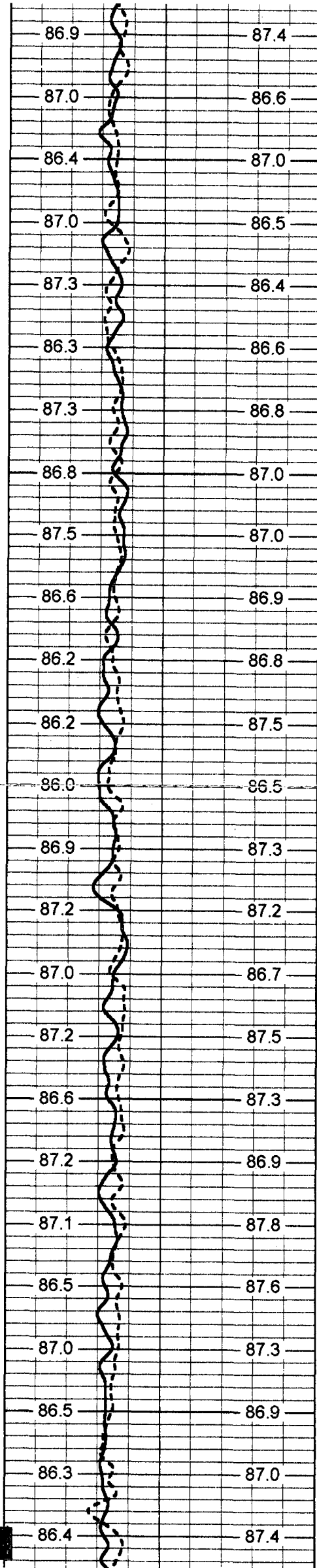




1500
1550
1600
1650
1700



54194
54328
54198
54205
54250
54141
54151
54436
54374
54545
54523
54803
54932
55318
55322
55167
55462
55243
55685
55867
55782
55643
55713
55456
55770



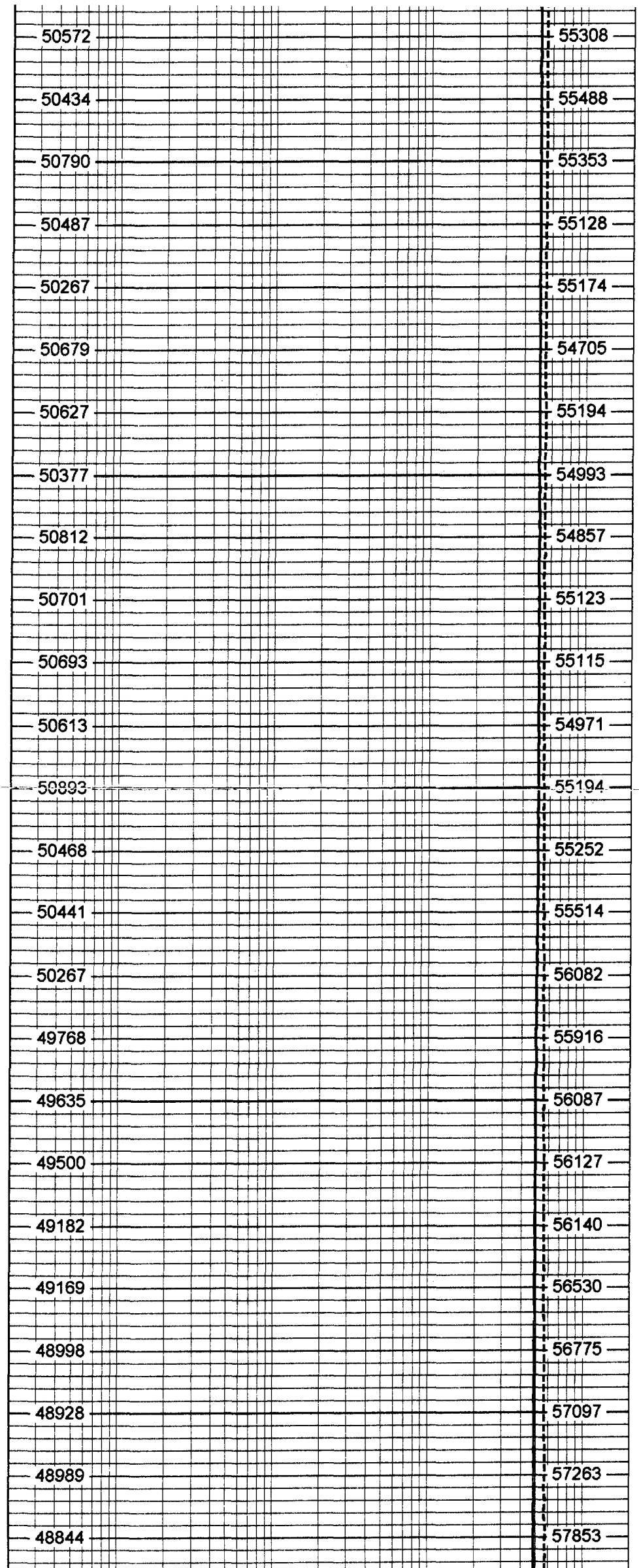
1750

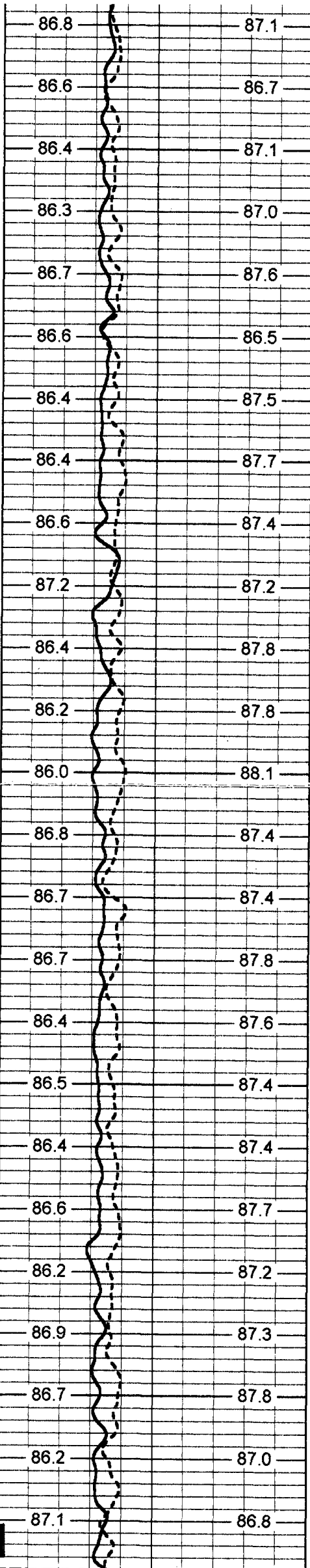
1800

1850

1900

1950





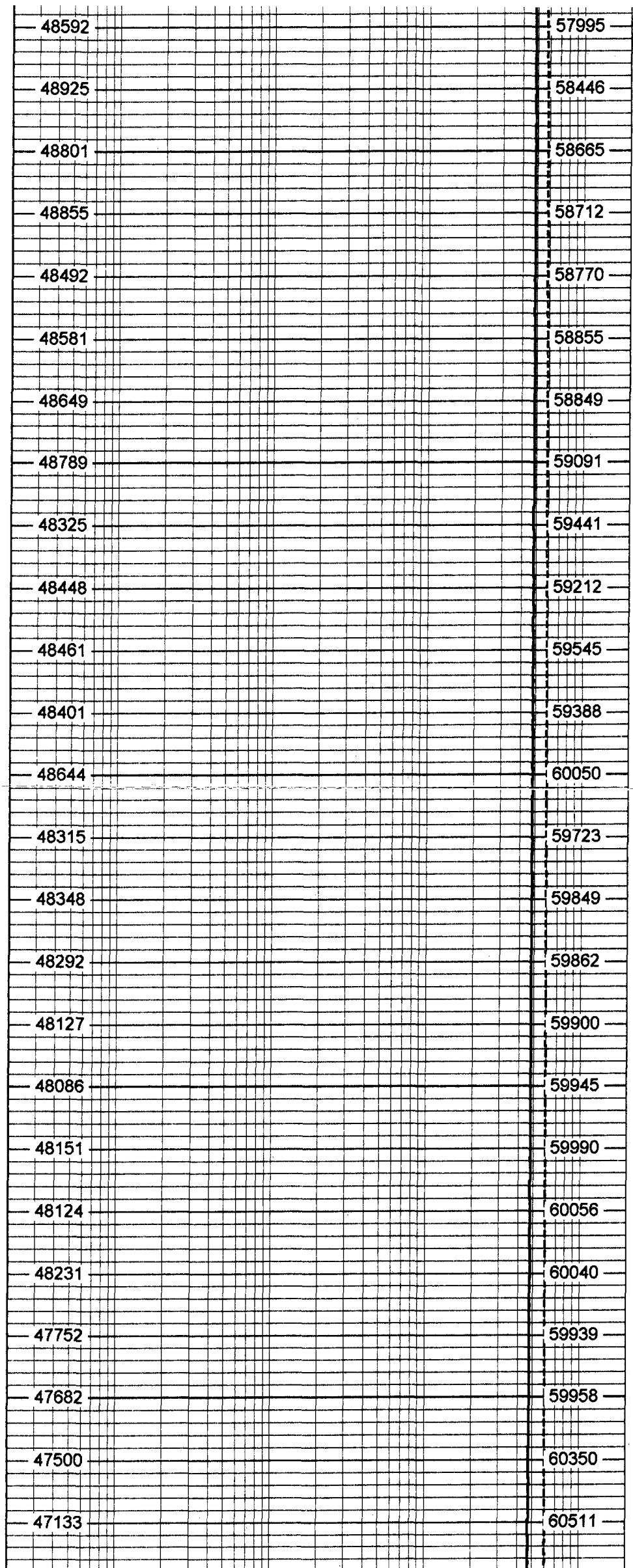
2000

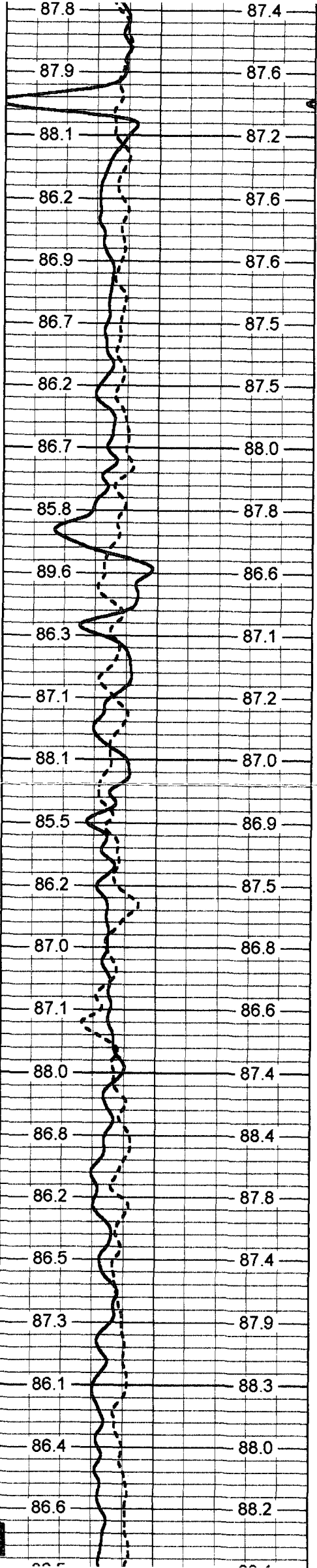
2050

2100

2150

2200





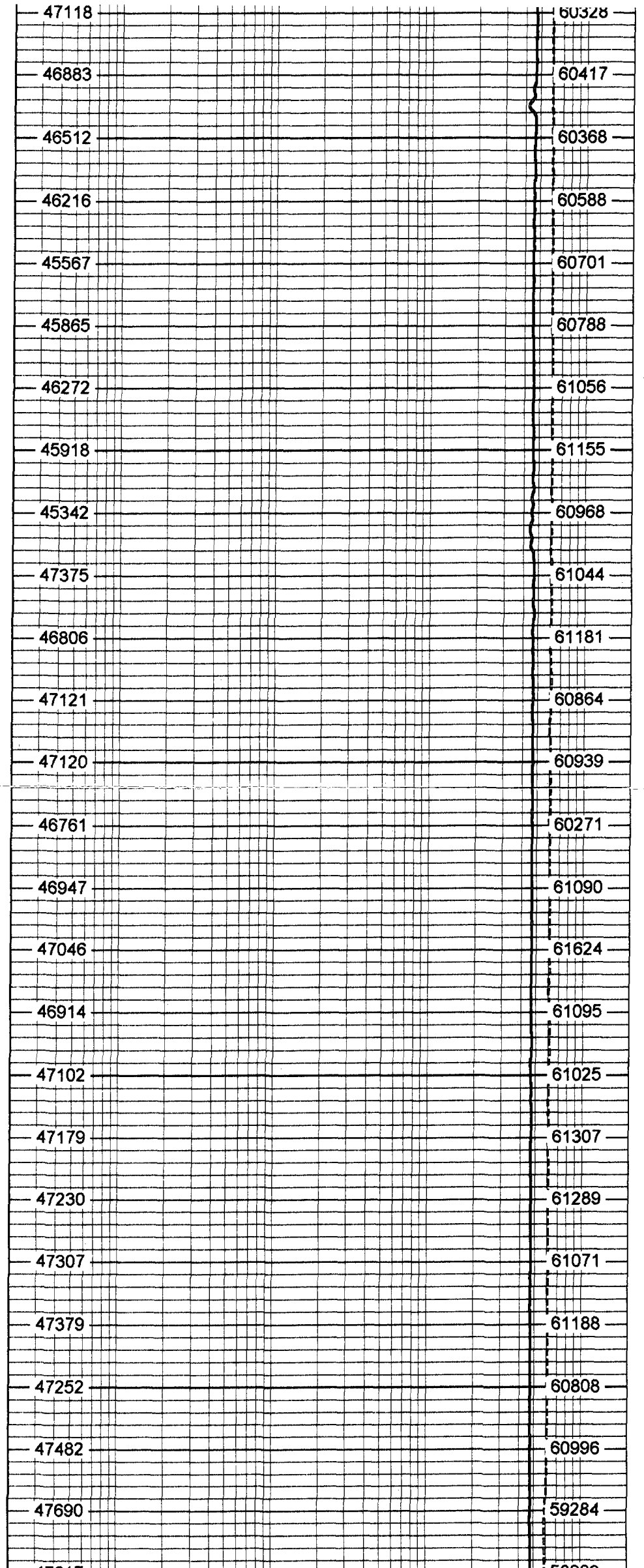
2250

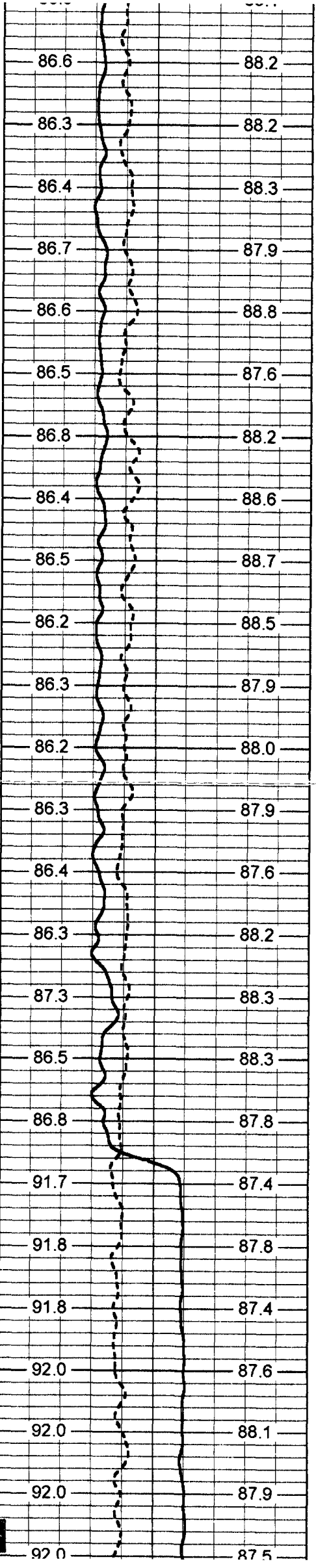
2300

2350

2400

2450





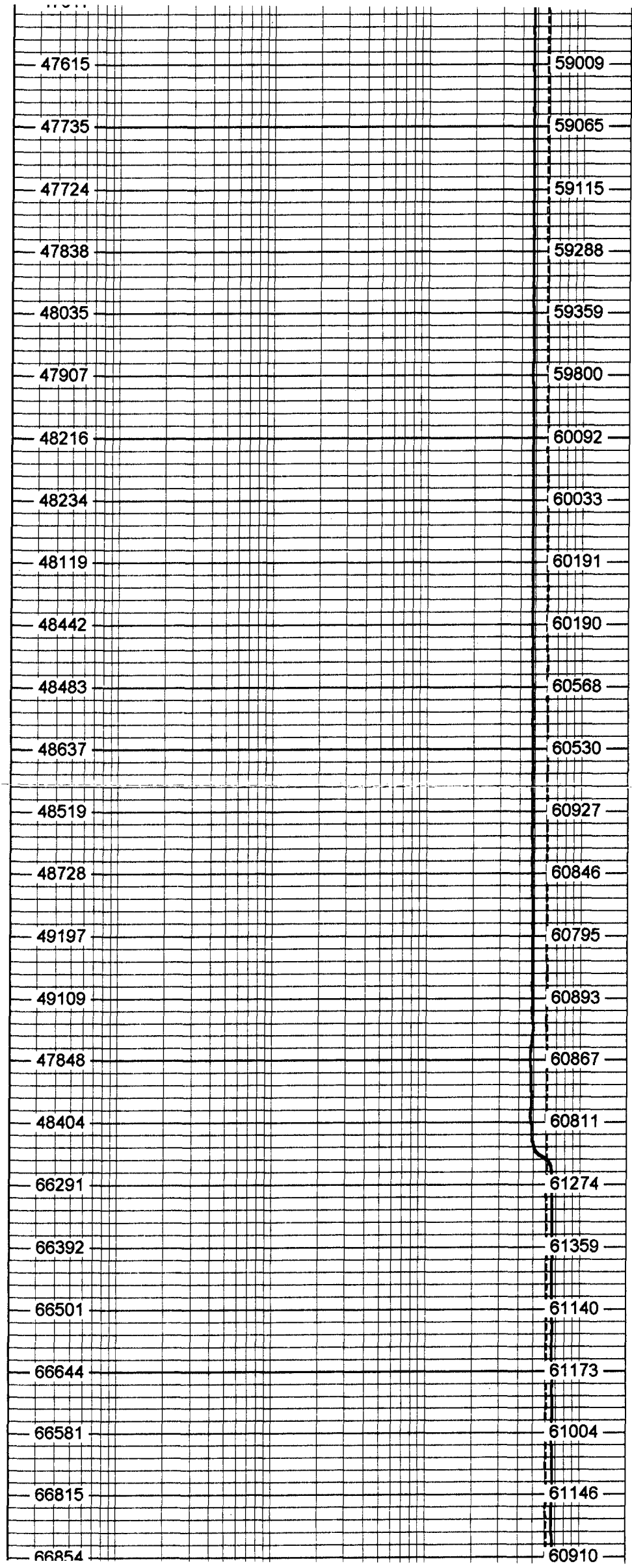
2500

2550

2600

2650

2700



59009

59065

59115

59288

59359

59800

60092

60033

60191

60190

60568

60530

60927

60846

60795

60893

60867

60811

61274

61359

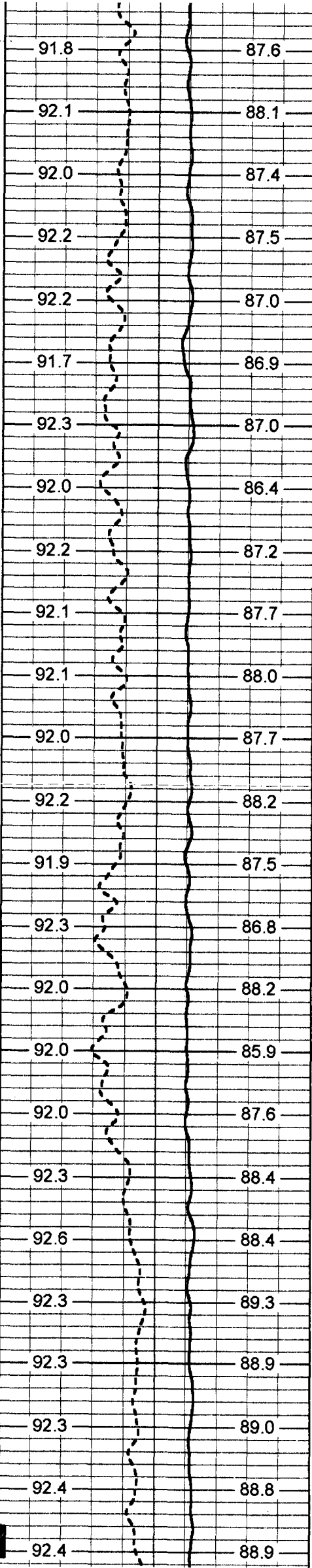
61140

61173

61004

61146

60910



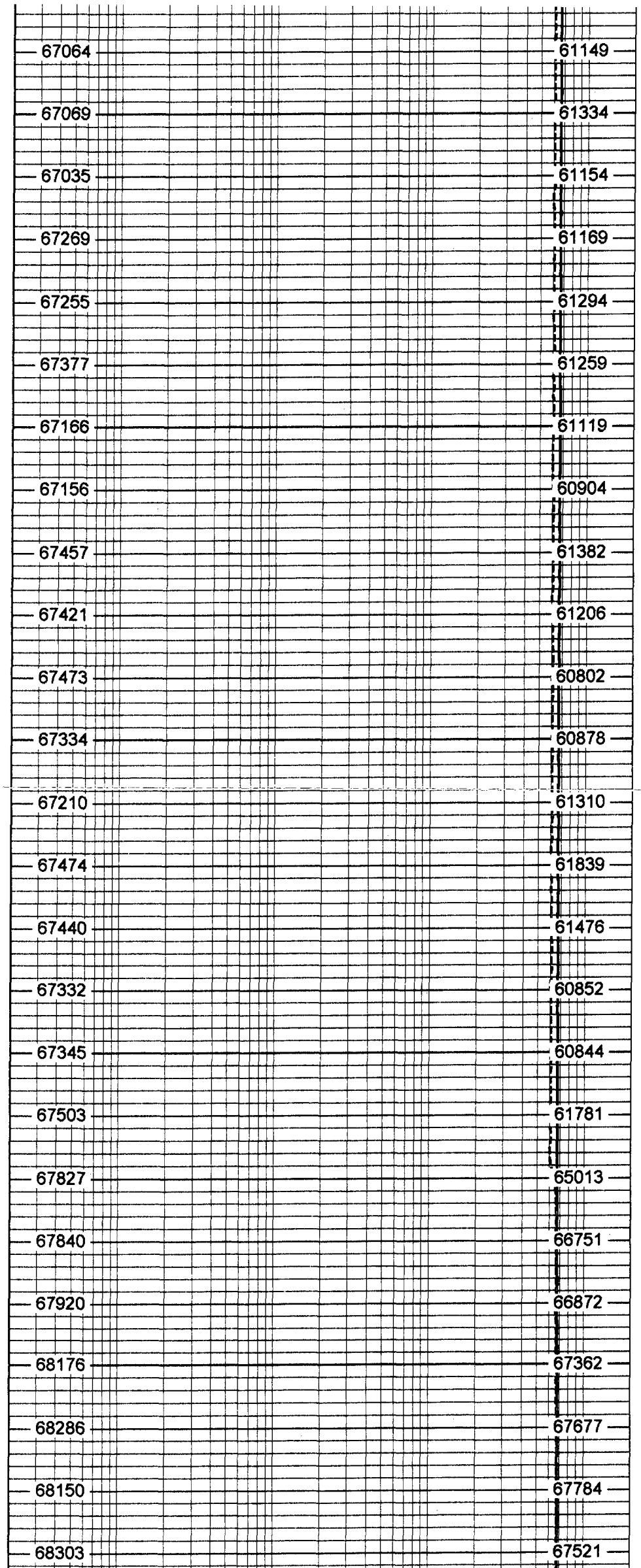
2750

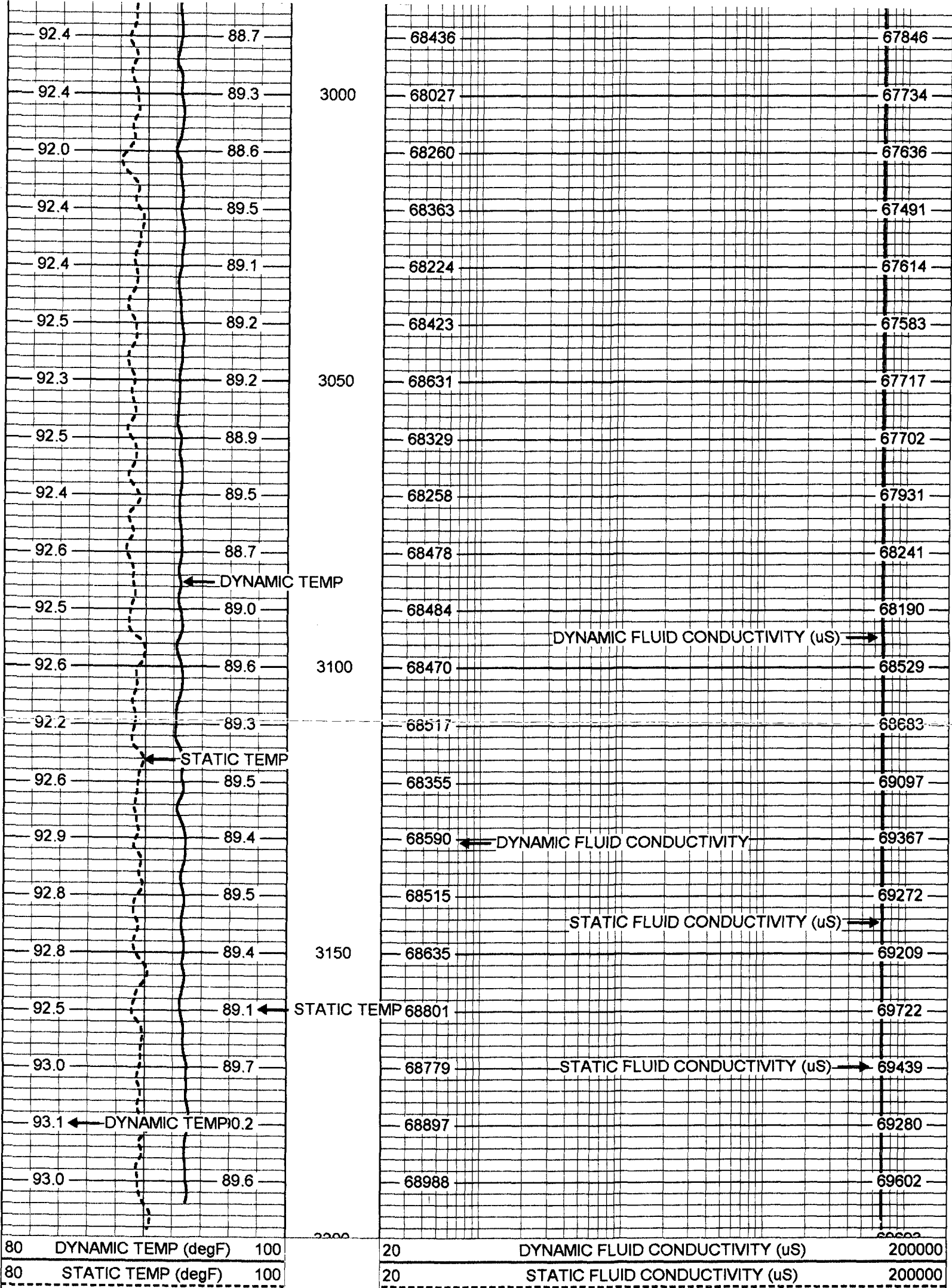
2800

2850

2900

2950





Tool Model:
Performed:

SONDEX
Thu Apr 22 10:00:02 2004

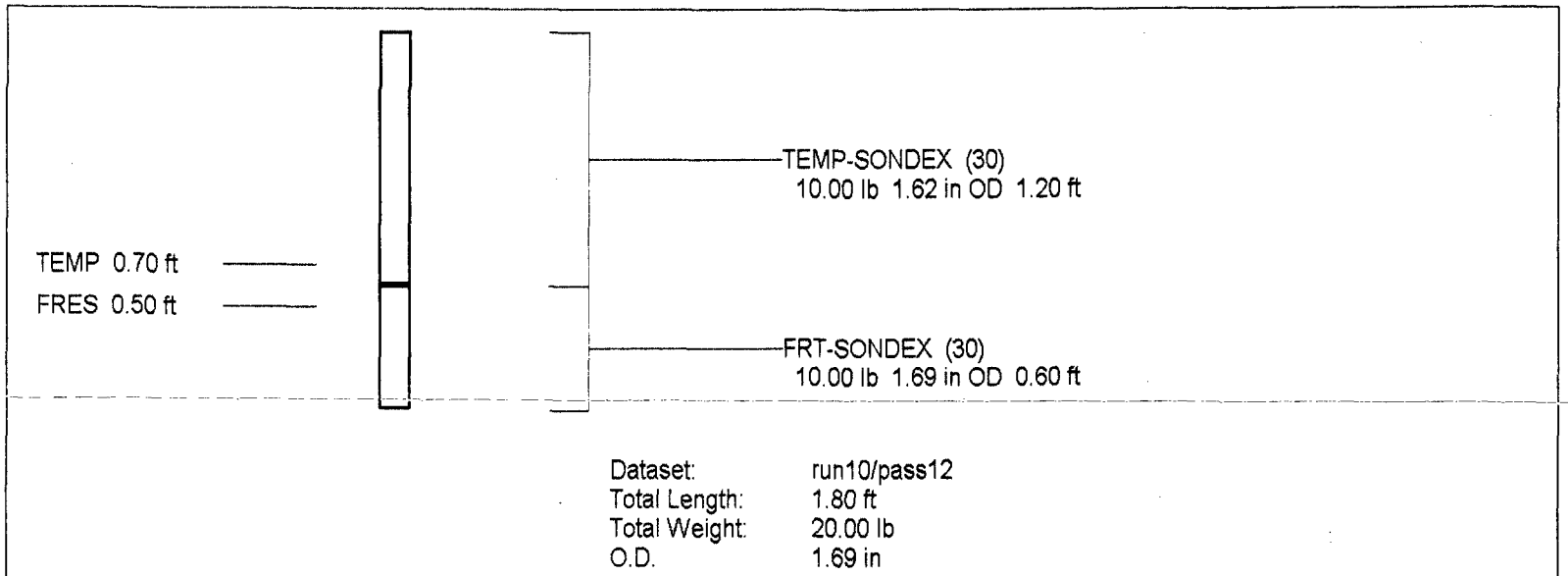
Point #	Reading		Reference
1	31.544	cps	1000.000
2	154.182	cps	10000.000
3	375.636	cps	25000.000
4	799.291	cps	50000.000
5		cps	
6		cps	

Temperature Calibration Report

Serial Number:
Tool Model:
Performed:

30
SONDEX
Thu Apr 22 10:07:24 2004

Point #	Reading		Reference	
1	158.554	cps	41	degF
2	306.398	cps	76	degF
3	634.807	cps	142	degF



RECEIVED

JUN 21 2004

D.E.P. - SOUTH DISTRICT