



**YOUNGQUIST  
BROTHERS, Inc.**

GEOPHYSICAL LOGGING DIVISION

03 2005

South District

**HIGH RESOLUTION  
TEMPERATURE  
LOG**

Company CHARLOTTE COUNTY UTIL  
Well IW #1  
Field WEST PORT  
County CHARLOTTE  
State FLORIDA

Company **CHARLOTTE COUNTY UTILITIES**

Well **IW #1**

Field **WEST PORT**

County **CHARLOTTE** State **FLORIDA**

Location		Other Services	
WEST PORT		RTS VIDEO	
Permanent Datum		Elevation	
Log Measured From	PAD	K.B.	
Drilling Measured From	PAD	D.F.	
		G.L.	

Date	22-SEPT-2005
Run Number	MIT 2005
Depth Driller	1900'
Depth Logger	1640'
Bottom Logged Interval	1640'
Top Log Interval	SURFACE
Open Hole Size	12"
Type Fluid	WATER
Density / Viscosity	NA
Max. Recorded Temp.	93 F
Estimated Cement Top	NA
Time Well Ready	0700
Time Logger on Bottom	0730
Equipment Number	103
Location	FT. MYERS
Recorded By	CATHEY
Witnessed By	M. BLACK

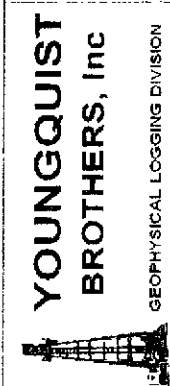
Borehole Record				Tubing Record			
Run Number	Bit	From	To	Size	Weight	From	To

Casing Record	Size	Wgt/Ft	Top	Bottom
Surface String				
Prof. String				
Production String	12"	61.4	SURFACE	1274'
Liner				

<<< Fold Here >>>

All interpretations are opinions based on inferences from electrical or other measurements and we cannot and do not guarantee the accuracy or correctness of any interpretation, and we shall not, except in the case of gross or willful negligence on our part, be liable or responsible for any loss, costs, damages, or expenses incurred or sustained by anyone resulting from any interpretation made by any of our officers, agents or employees. These interpretations are also subject to our general terms and conditions set out in our current Price Schedule.

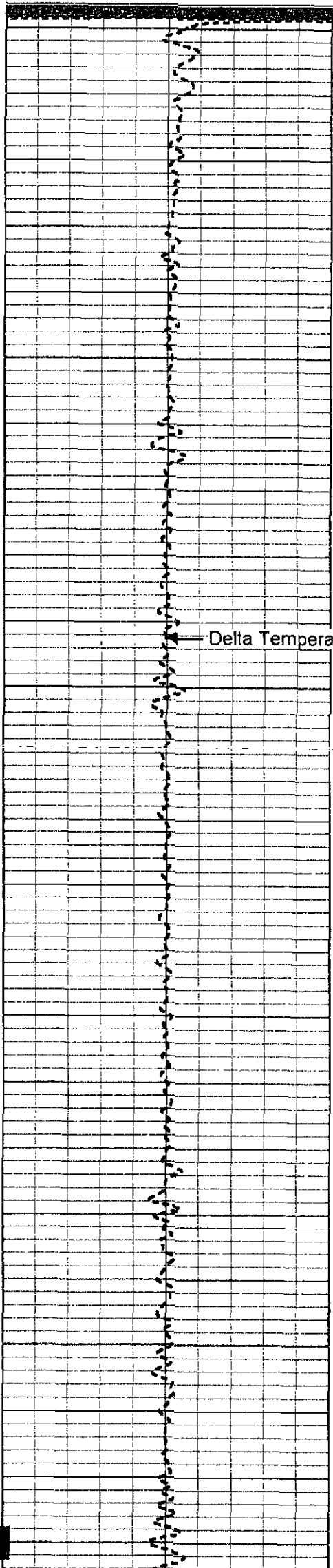
Comments



**TEMPERATURE**

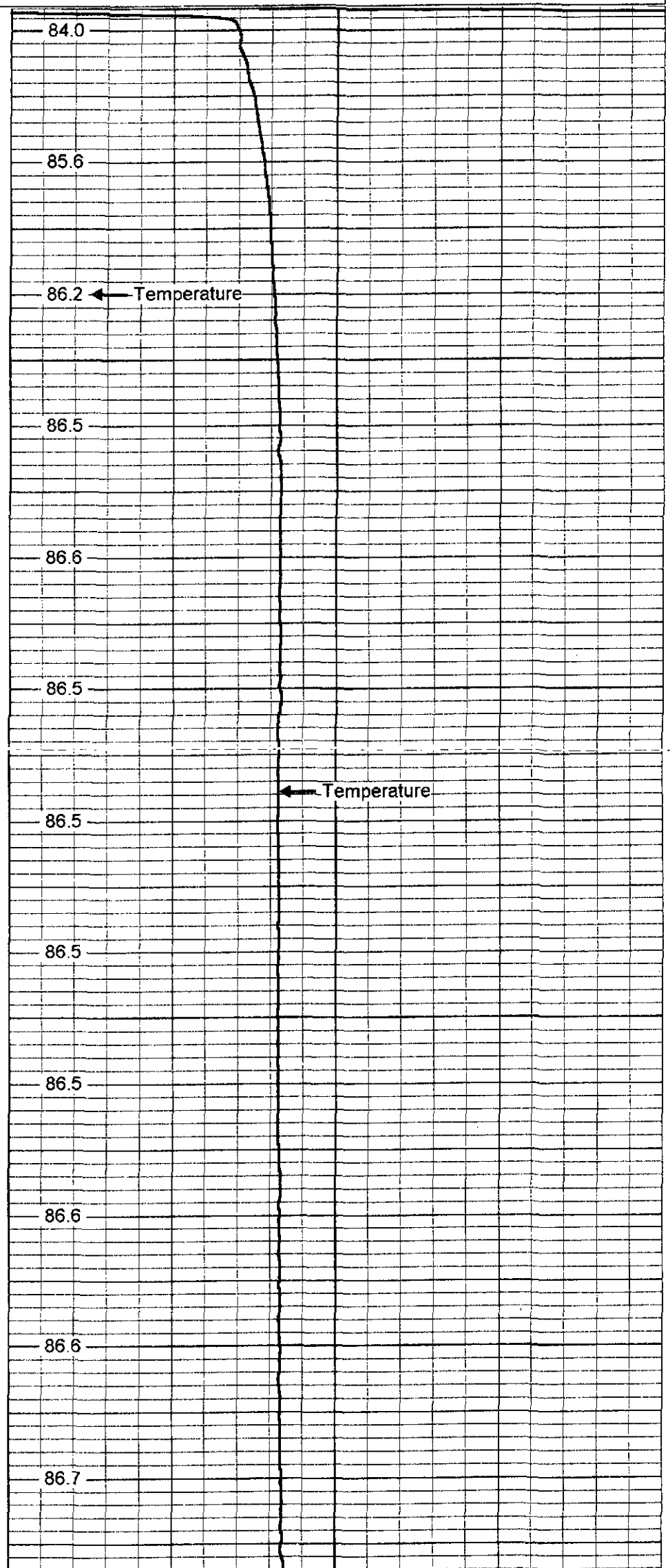
GEOPHYSICAL LOGGING DIVISION

Database File: wports.db  
 Dataset Pathname: pass2  
 Presentation Format: temp  
 Dataset Creation: Thu Sep 22 07:31:52 2005 by Log 6.2\_B4



0  
50  
100  
150  
200

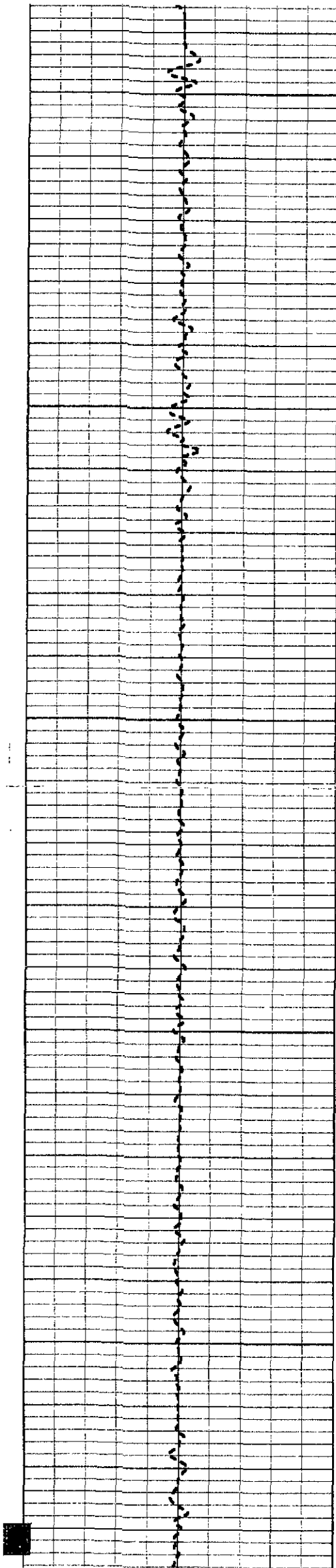
Delta Temperature



84.0  
85.6  
86.2  
86.5  
86.6  
86.5  
86.5  
86.5  
86.6  
86.6  
86.7

Temperature

Temperature



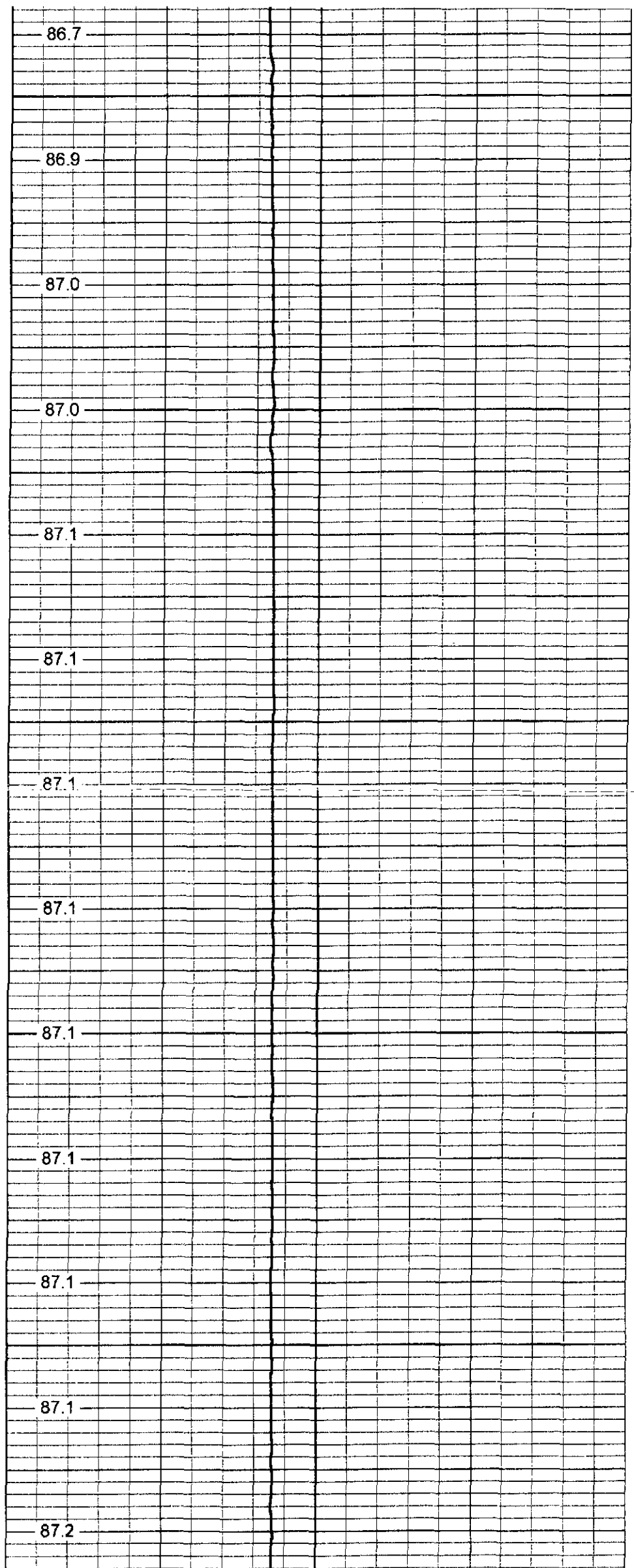
250

300

350

400

450



86.7

86.9

87.0

87.0

87.1

87.1

87.1

87.1

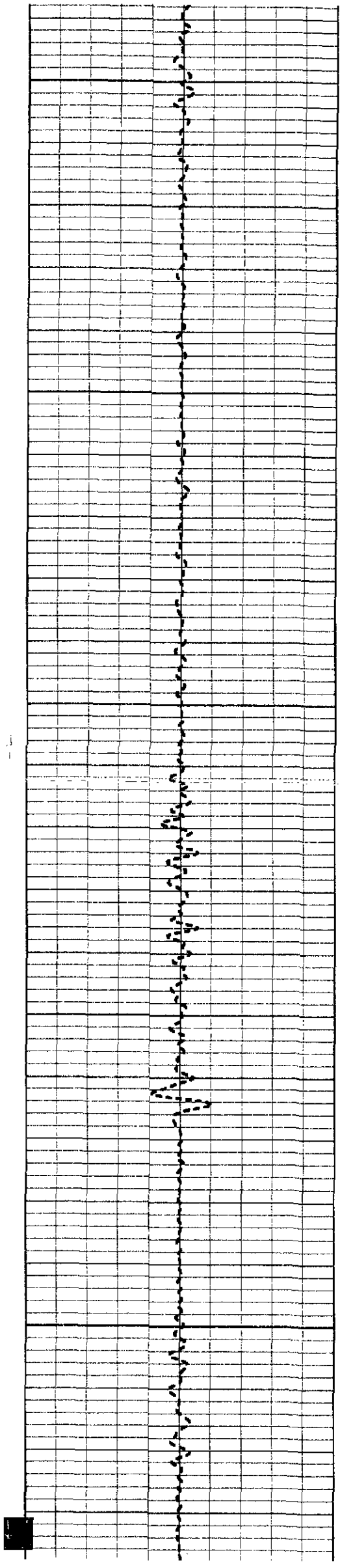
87.1

87.1

87.1

87.1

87.2



500

87.2

87.3

87.3

550

87.3

87.3

600

87.4

87.3

87.5

650

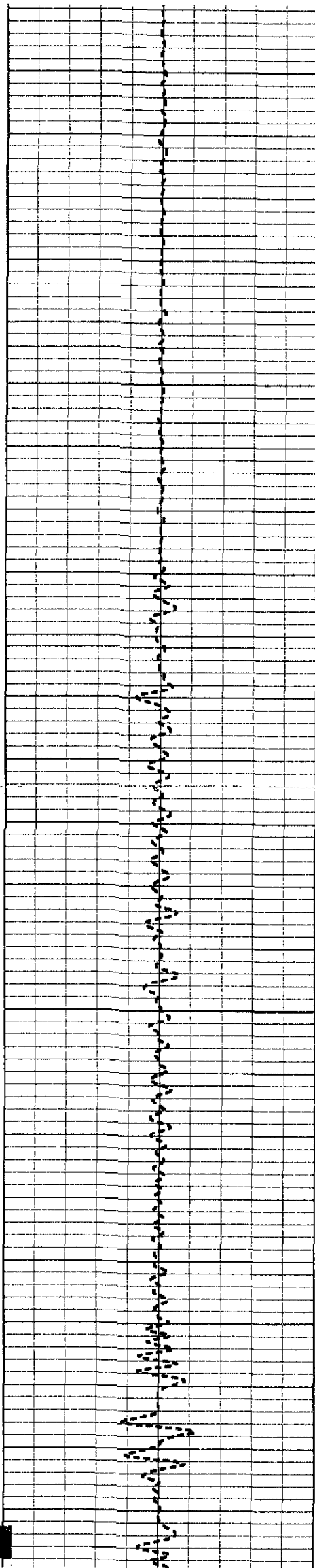
87.5

87.5

700

87.6

87.6



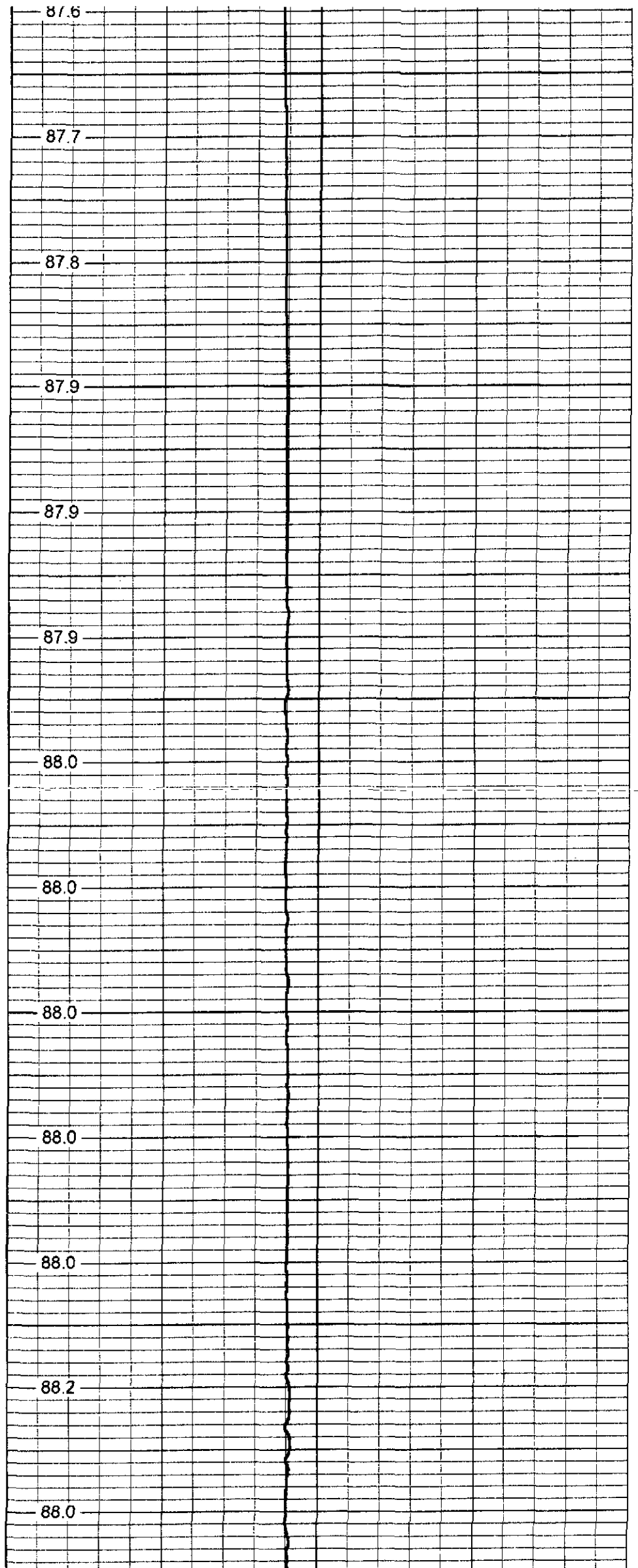
750

800

850

900

950



87.6

87.7

87.8

87.9

87.9

87.9

88.0

88.0

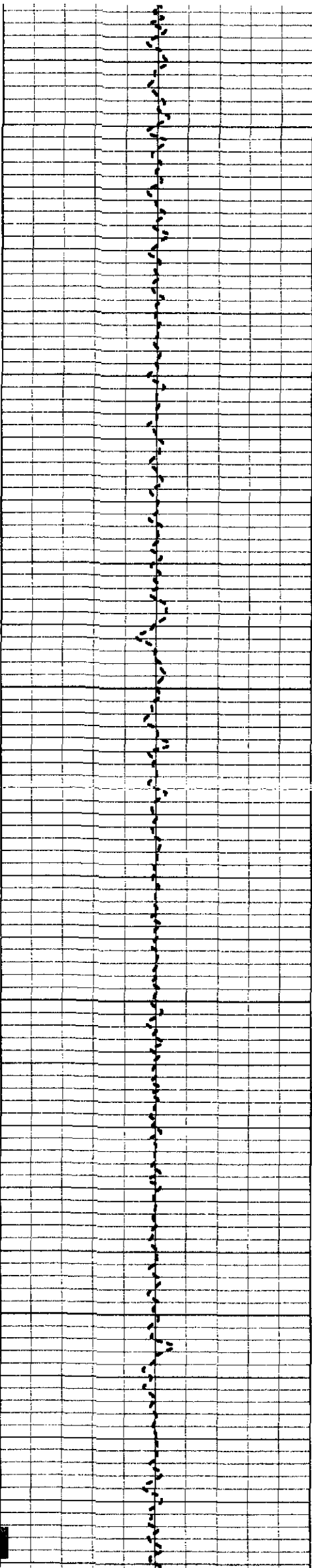
88.0

88.0

88.0

88.2

88.0



1000

88.1

88.2

88.2

1050

88.2

88.3

1100

88.4

88.4

88.5

1150

88.5

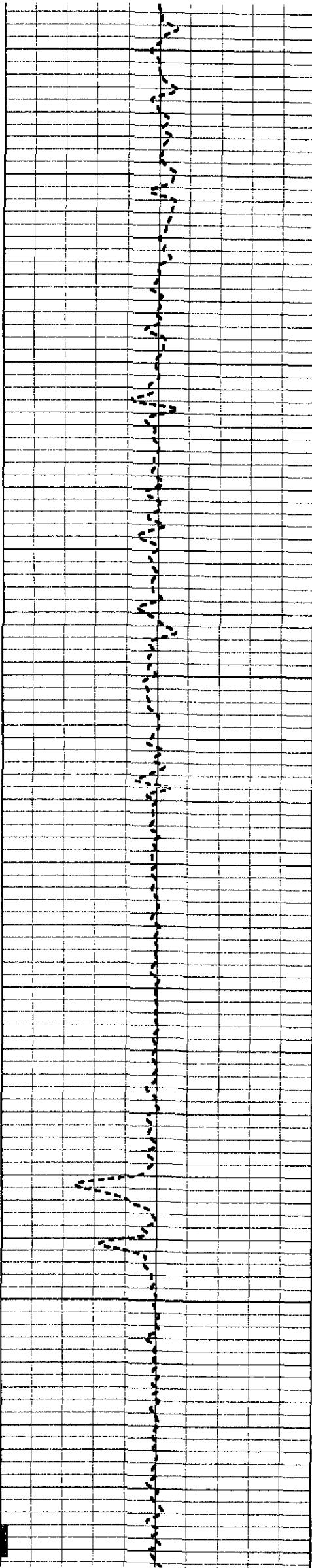
88.5

1200

88.4

88.3

88.3



1250

88.6

89.6

1300

89.7

89.3

88.6

1350

88.2

87.9

1400

87.7

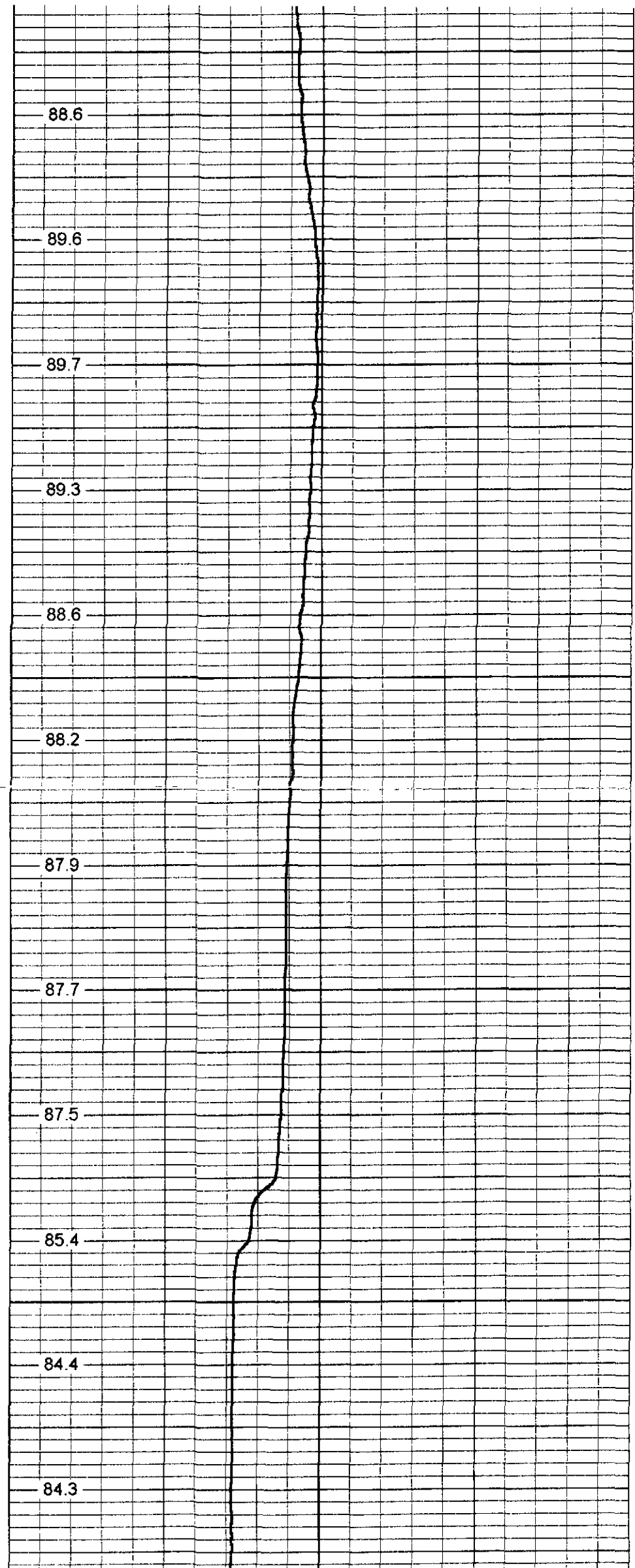
87.5

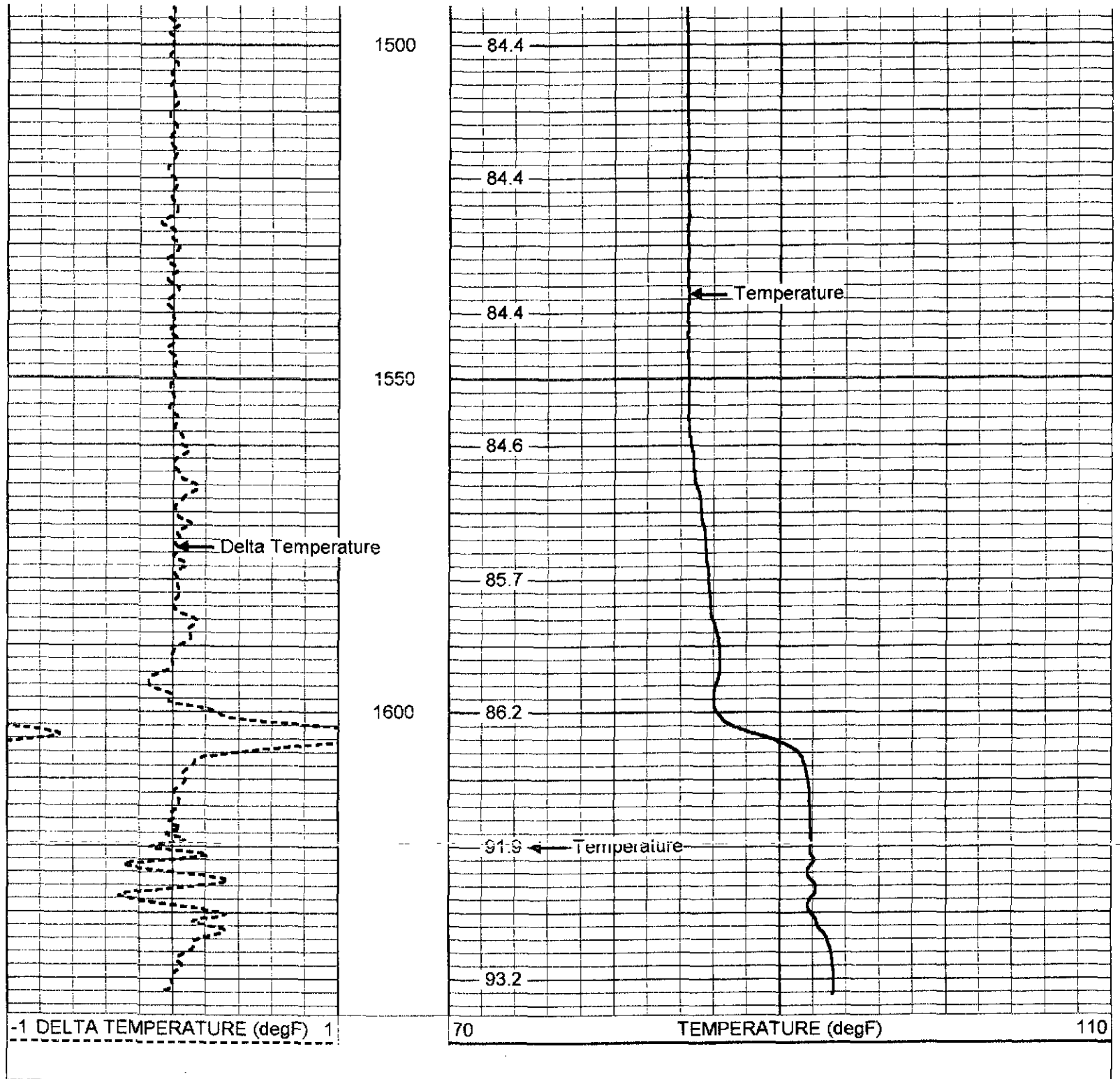
85.4

1450

84.4

84.3





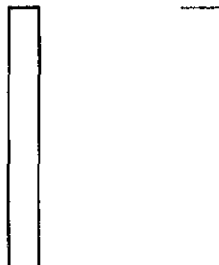
-1 DELTA TEMPERATURE (degF) 1

70 TEMPERATURE (degF) 110

Temperature Calibration Report

Serial Number: 951  
 Tool Model: RTS  
 Performed: Thu Aug 25 10:15:24 2005

Point #	Reading		Reference	
1	410.1	cps	41	degF
2	810.2	cps	81	degF
3	1570.6	cps	157	degF





TEMP-RTS (951)  
70.00 lb 1.69 in OD 25.50 ft

TEMP 0.10 ft

Dataset:	run1/pass2
Total Length:	25.50 ft
Total Weight:	70.00 lb
O.D.	1.69 in