



**YOUNGQUIST BROTHERS, Inc**  
 GEOPHYSICAL LOGGING DIVISION  
**HIGH RESOLUTION TEMPERATURE LOG**

Company CHARLOTTE COUNTY UTIL.  
 Well EAST PORT IW-2  
 Field EAST PORT W.R.F.  
 County CHARLOTTE  
 State FLORIDA

Company CHARLOTTE COUNTY UTILITIES  
 Well EAST PORT IW-2  
 Field EAST PORT W.R.F.  
 County CHARLOTTE State FLORIDA

Location

Permanent Datum PAD  
 Log Measured From PAD  
 Drilling Measured From PAD

Elevation

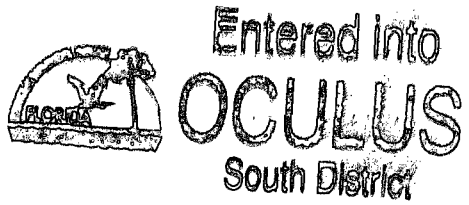
Other Services  
 RTS  
 VIDEO

Date	29-SEPT-2005	
Run Number	MIT 2005	
Depth Driller	3246'	
Depth Logger	3106'	
Bottom Logged Interval	3106'	
Top Log Interval	SURFACE	
Open Hole Size	18.5"	
Type Fluid	WATER	
Density / Viscosity	NA	
Max. Recorded Temp.	90 F	
Estimated Cement Top	NA	
Time Well Ready	0700	
Time Logger on Bottom	0800	
Equipment Number	103	
Location	FT. MYERS	
Recorded By	CATHY	
Witnessed By	B. PORTER	
Borehole Record		
Run Number	Bit	From
Casing Record	Size	Wgt/Ft
Surface String		
Prod. String	20"	500" W.T.
Production String		
Liner		
Tubing Record		
	Weight	From
		To
		Bottom
		2965'

<<< Fold Here >>>

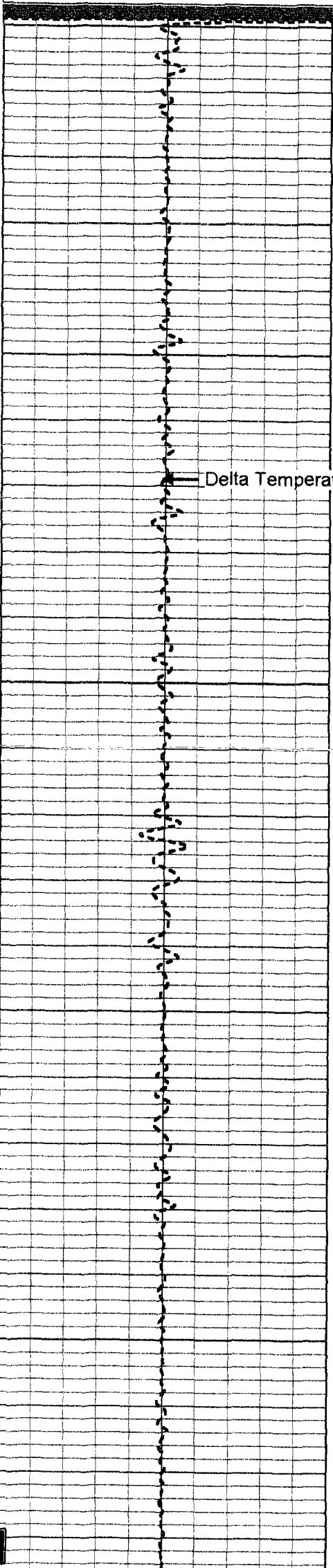
All interpretations are opinions based on inferences from electrical or other measurements and we cannot and do not guarantee the accuracy or correctness of any interpretation, and we shall not, except in the case of gross or willful negligence on our part, be liable or responsible for any loss, costs, damages, or expenses incurred or sustained by anyone resulting from any interpretation made by any of our officers, agents or employees. These interpretations are also subject to our general terms and conditions set out in our current Price Schedule.

Comments

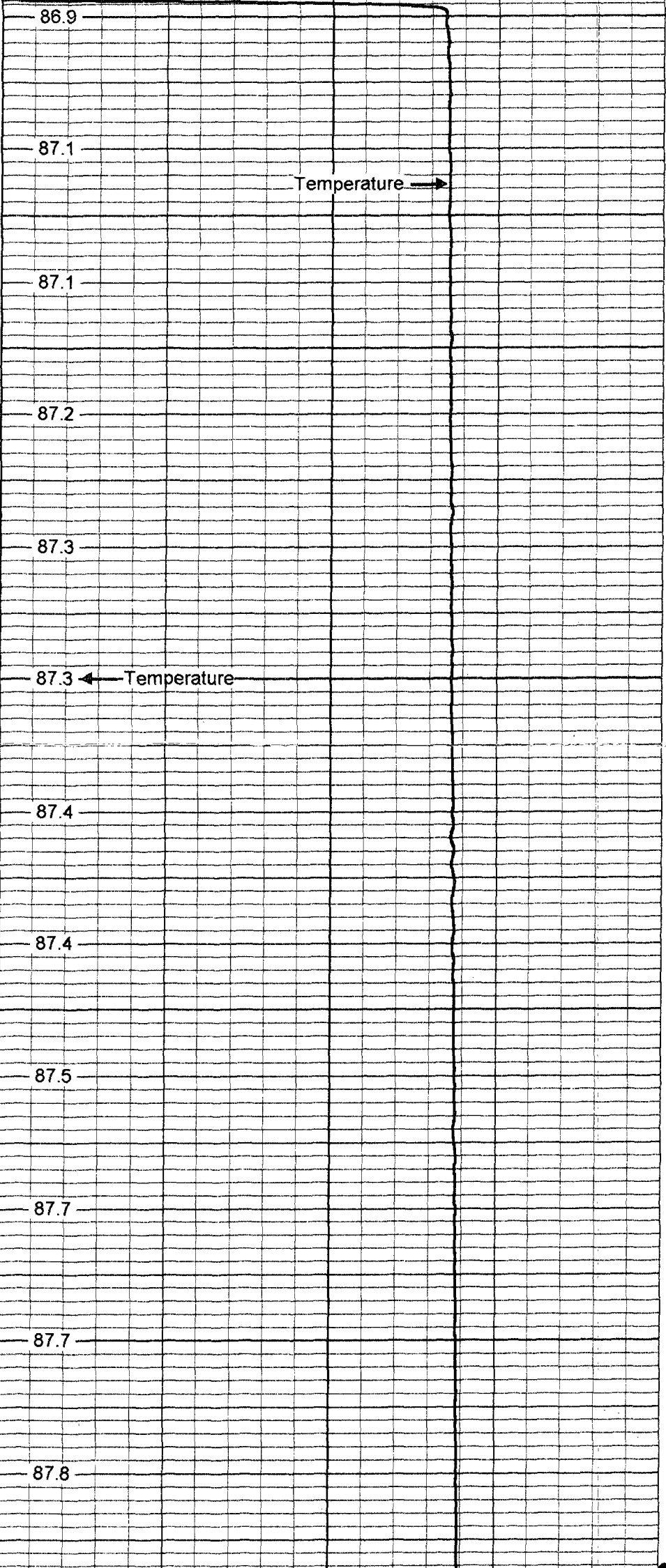


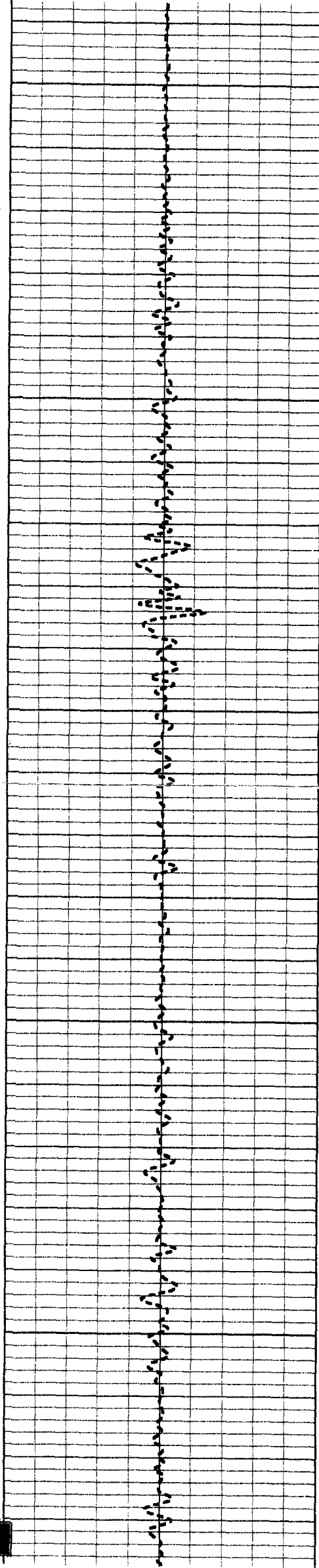
**TEMPERATURE**

Database File: eprt2rts.db  
 Dataset Pathname: pass1  
 Presentation Format: temp  
 Dataset Creation: Thu Sep 29 07:24:49 2005 by Log 6.2\_B4  
 Charted by: Depth in Feet scaled 1:240



0  
50  
100  
150  
200





250

300

350

400

450

87.8

87.9

87.9

88.1

88.1

88.1

88.2

88.2

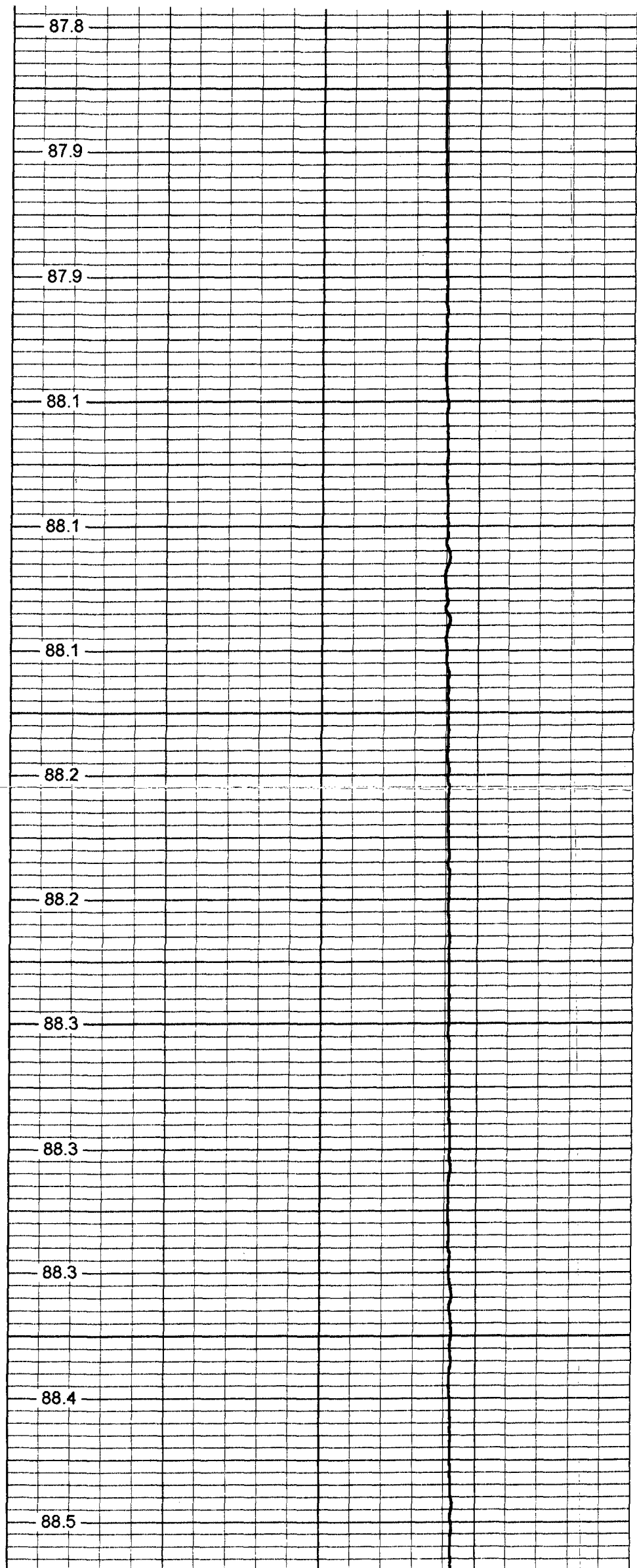
88.3

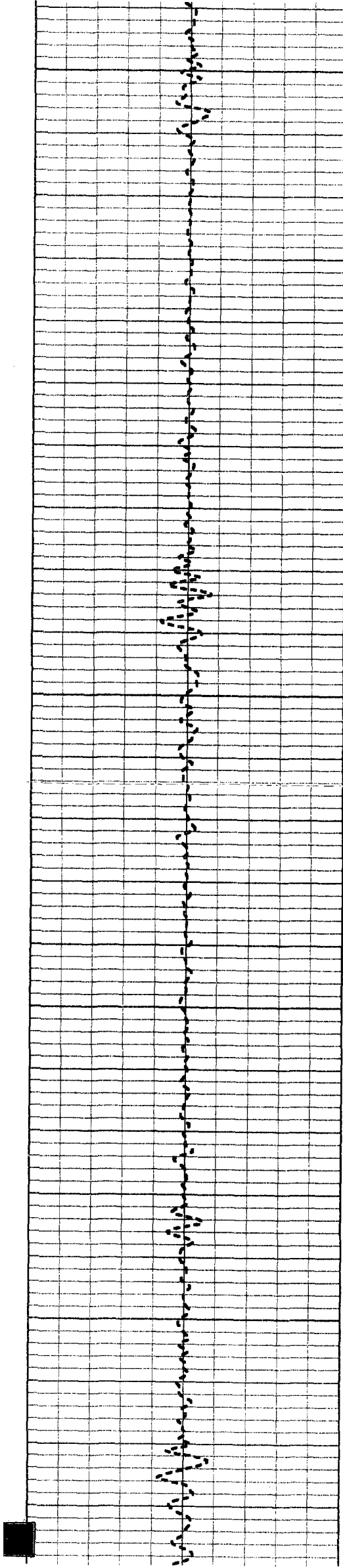
88.3

88.3

88.4

88.5





500

88.6

88.6

88.6

550

88.7

88.7

600

88.8

88.8

88.9

650

88.9

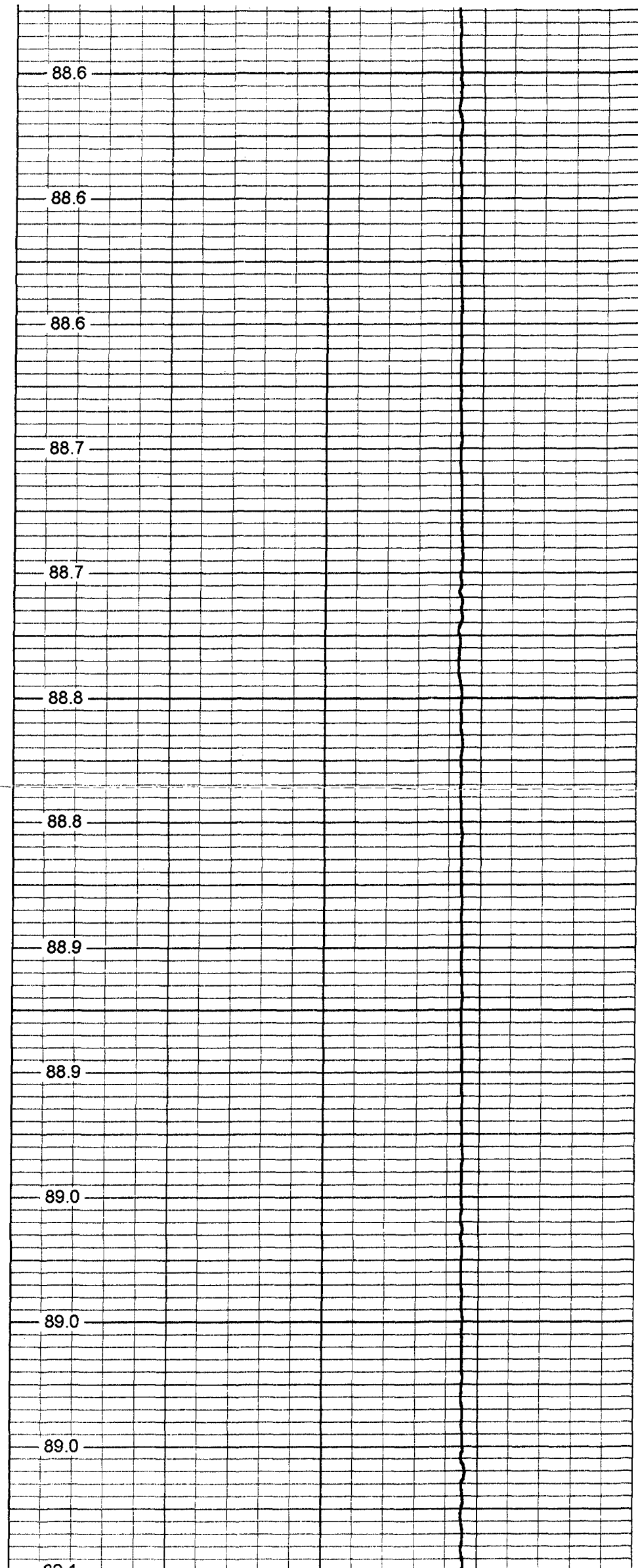
89.0

700

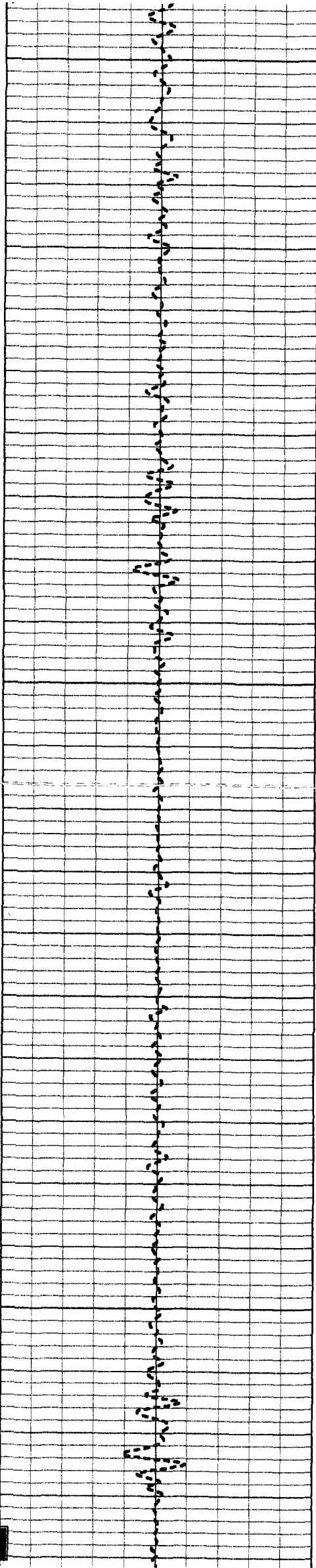
89.0

89.0

89.0







750

89.1

89.1

800

89.2

89.3

89.3

850

89.3

89.4

900

89.5

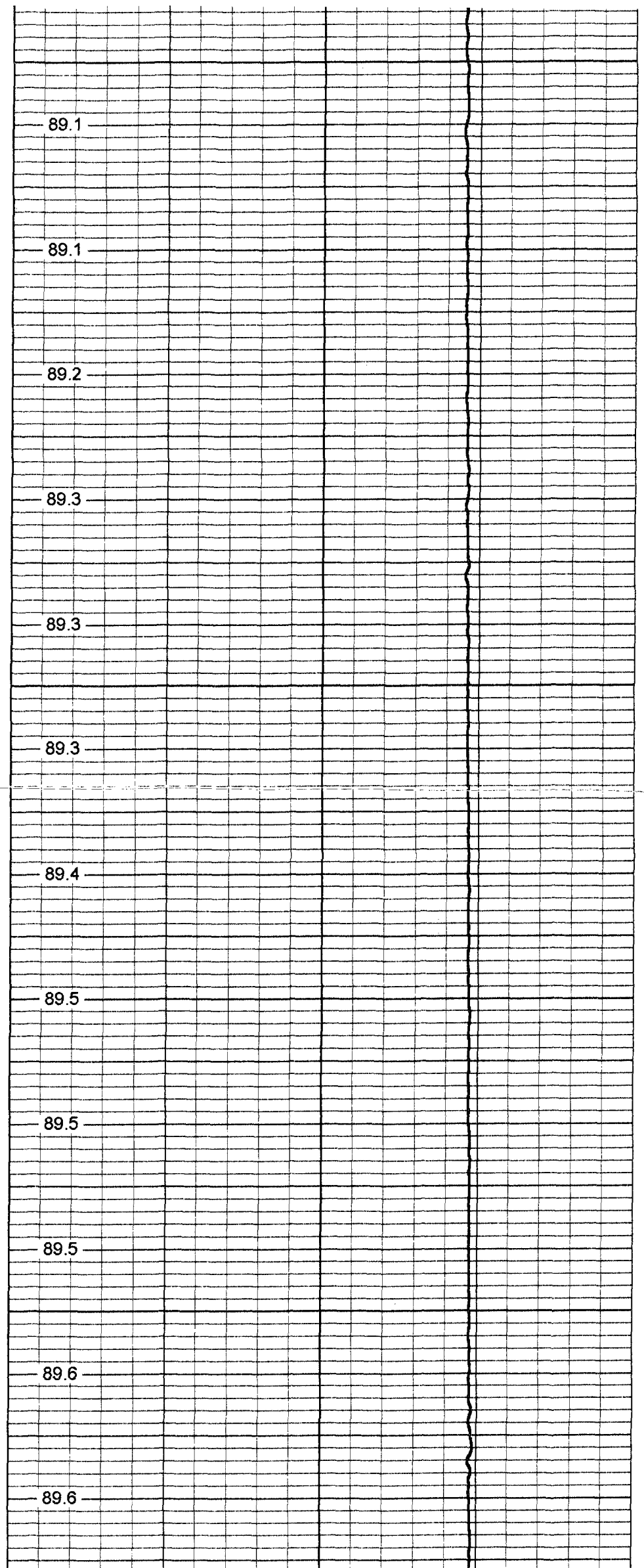
89.5

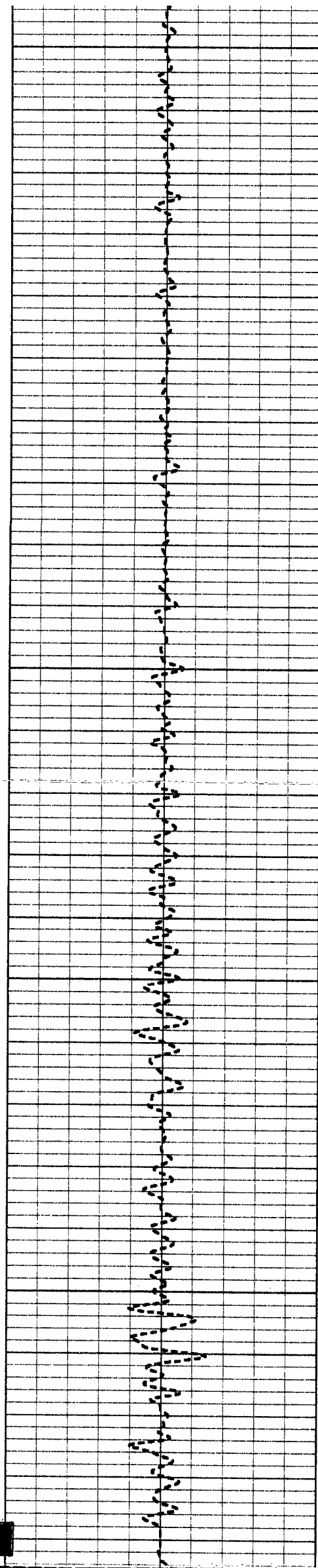
89.5

950

89.6

89.6





1000

89.7

89.7

89.7

1050

89.7

89.8

1100

89.9

89.9

90.0

1150

89.9

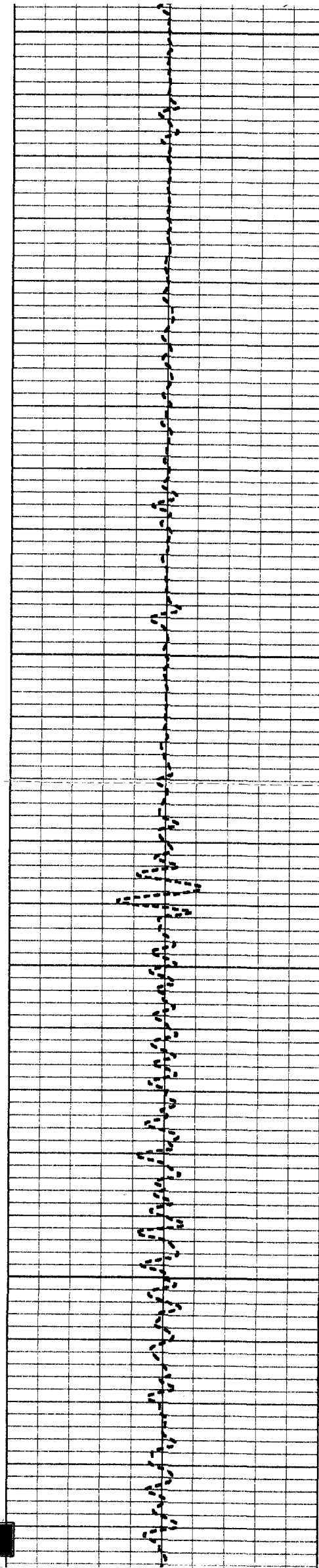
90.1

1200

90.0

90.1

90.1



1250

90.1

90.2

1300

90.2

90.2

90.2

1350

90.1

90.1

1400

90.1

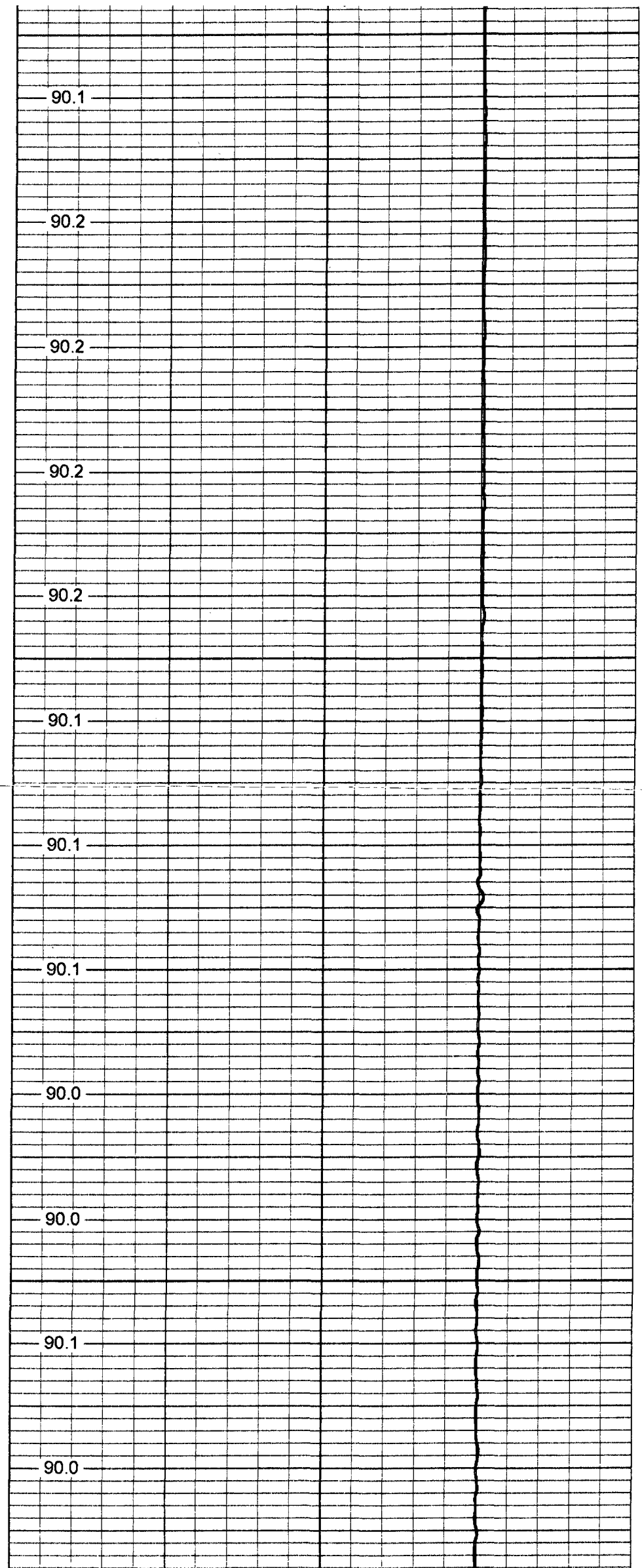
90.0

90.0

1450

90.1

90.0

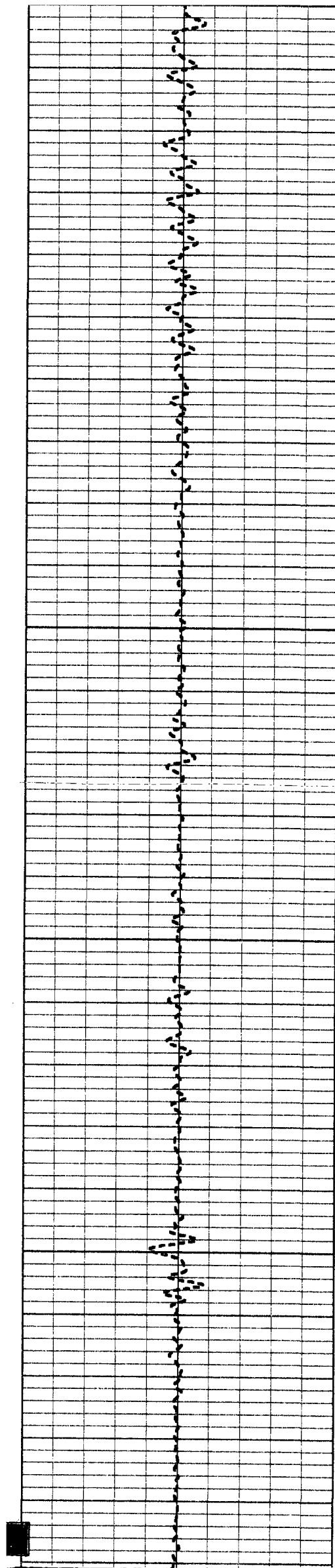




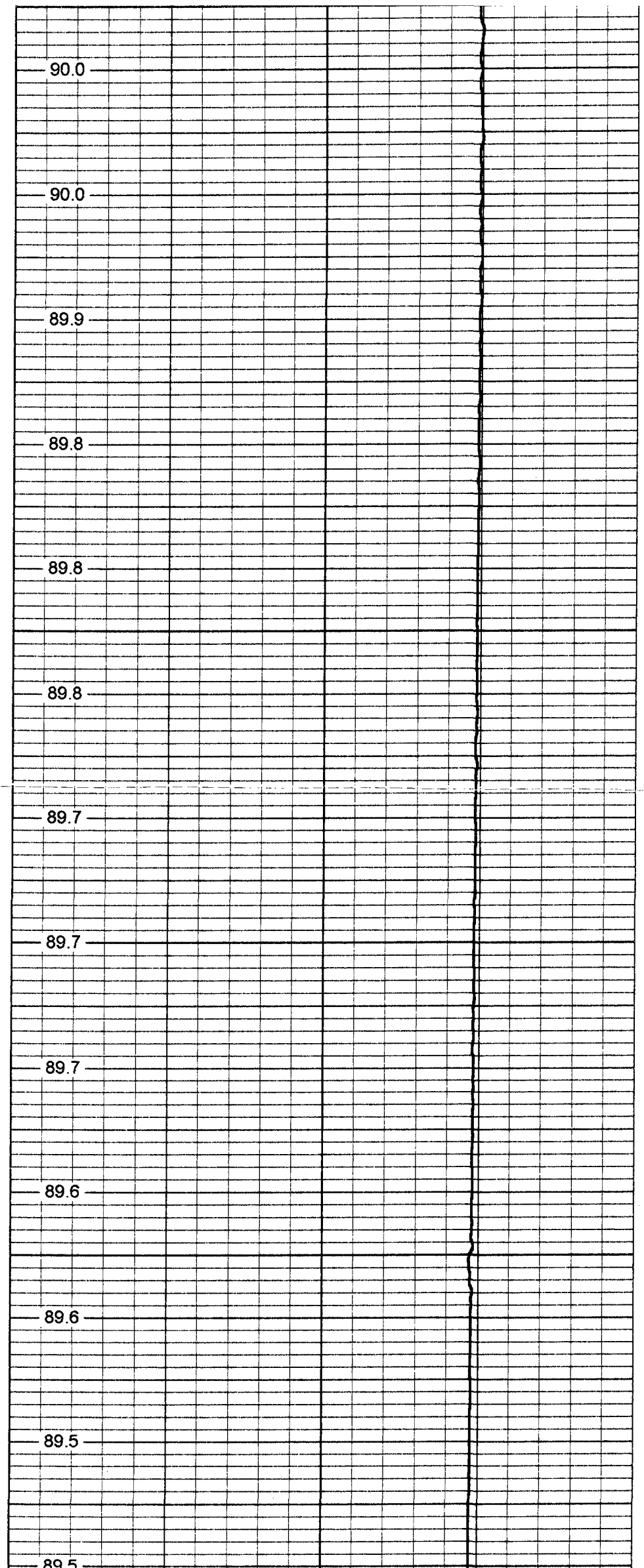
1500  
1550  
1600  
1650  
1700

90.0  
90.0  
90.0  
90.1  
90.0  
90.0  
90.0  
90.0  
90.0  
90.0  
90.0  
89.9  
90.1

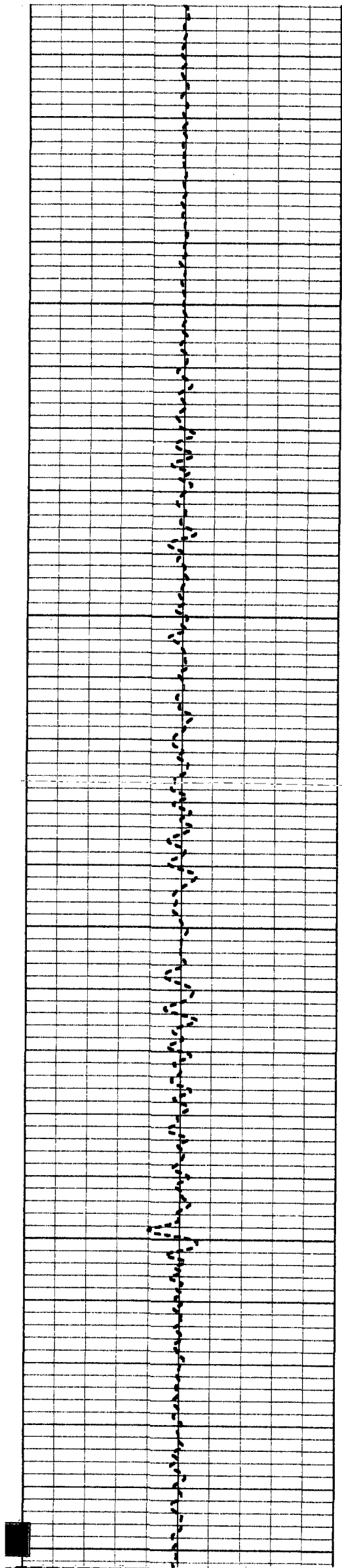




1750  
1800  
1850  
1900  
1950  
2000



90.0  
90.0  
89.9  
89.8  
89.8  
89.8  
89.7  
89.7  
89.6  
89.6  
89.5  
89.5



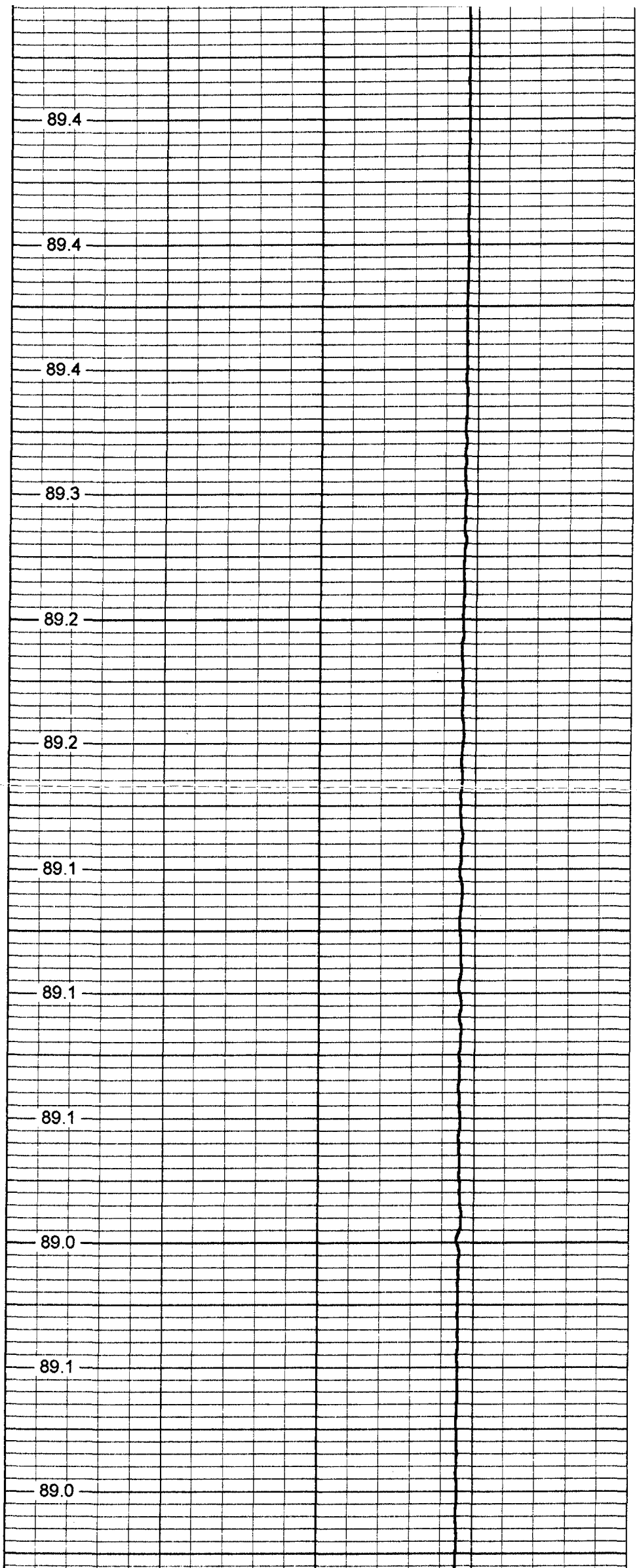
2050

2100

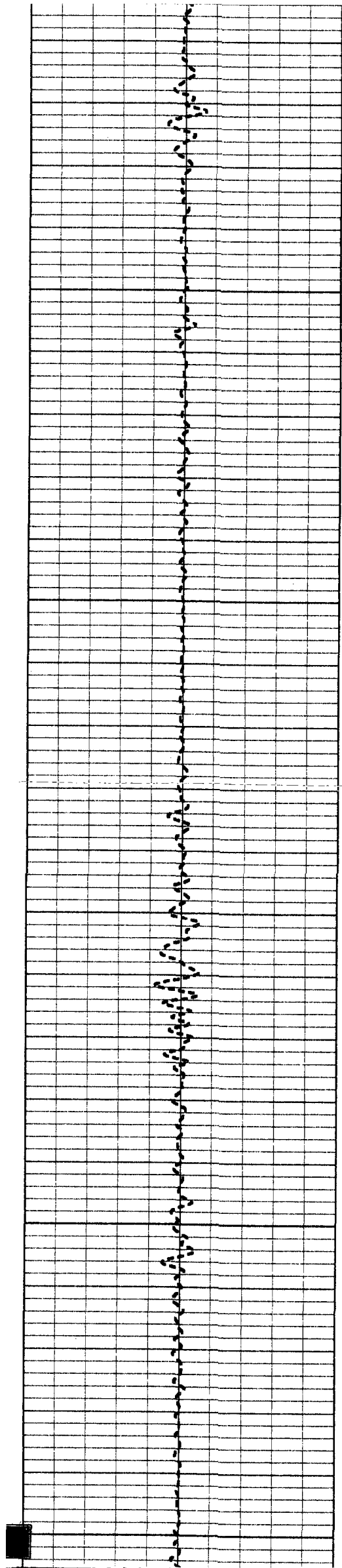
2150

2200

2250







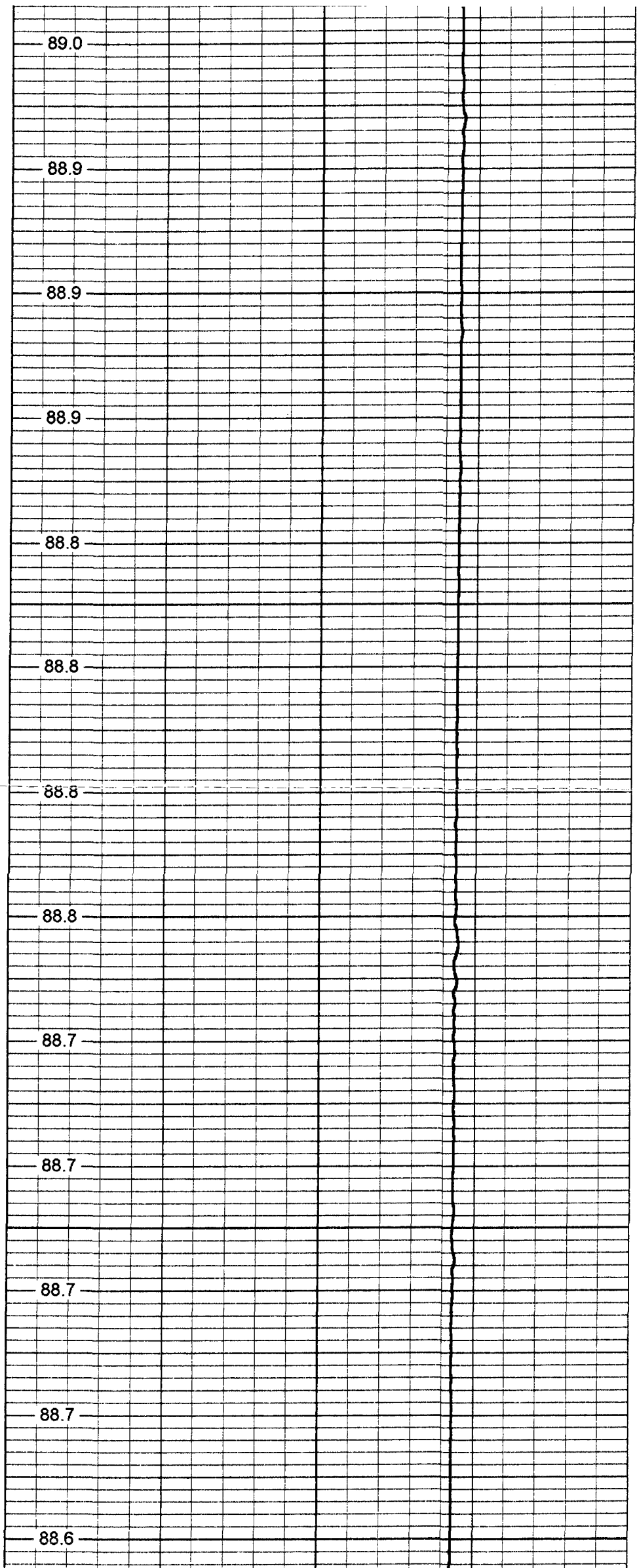
2300

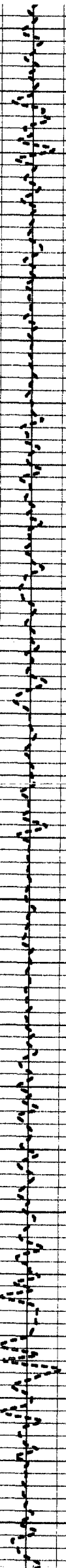
2350

2400

2450

2500





2550

2600

2650

2700

2750

88.6

88.5

88.5

88.4

88.4

88.3

88.3

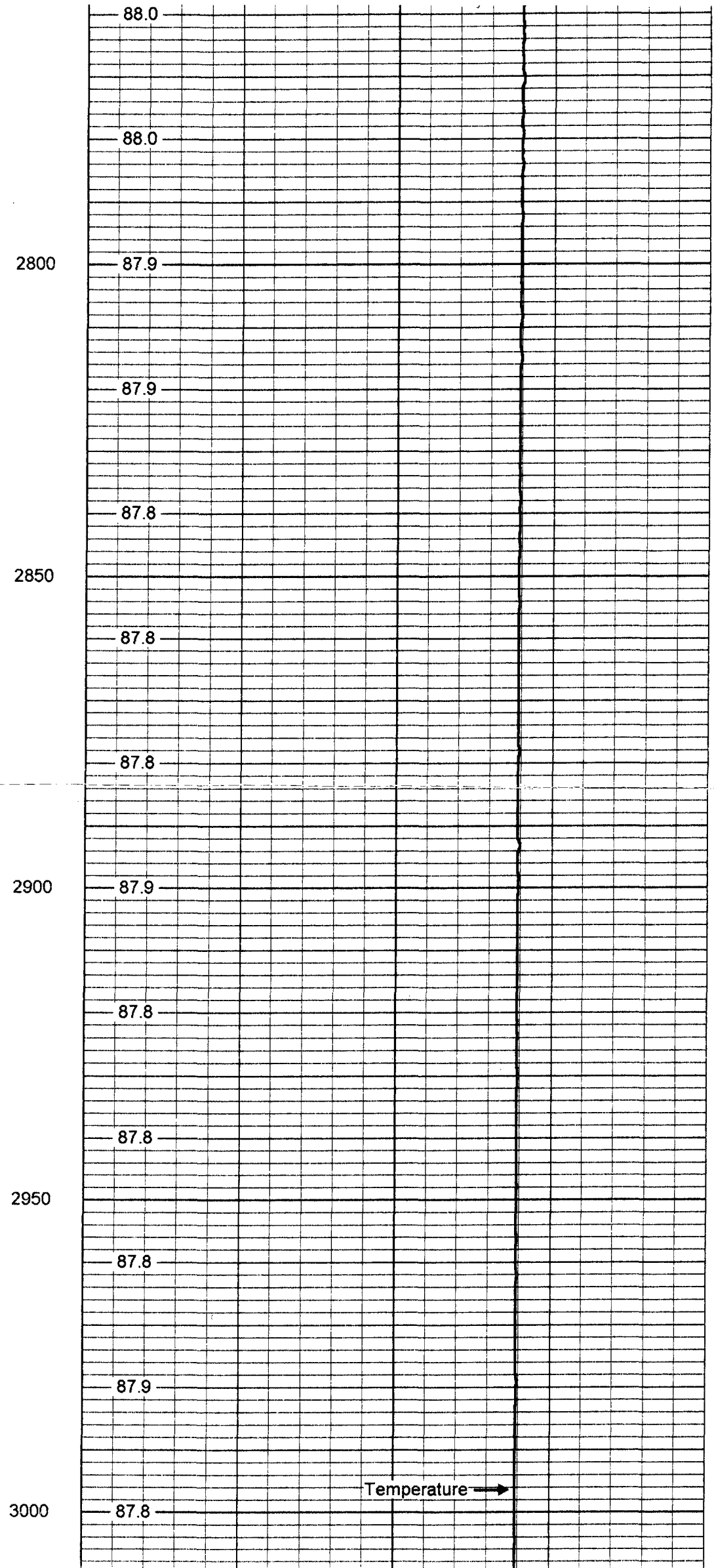
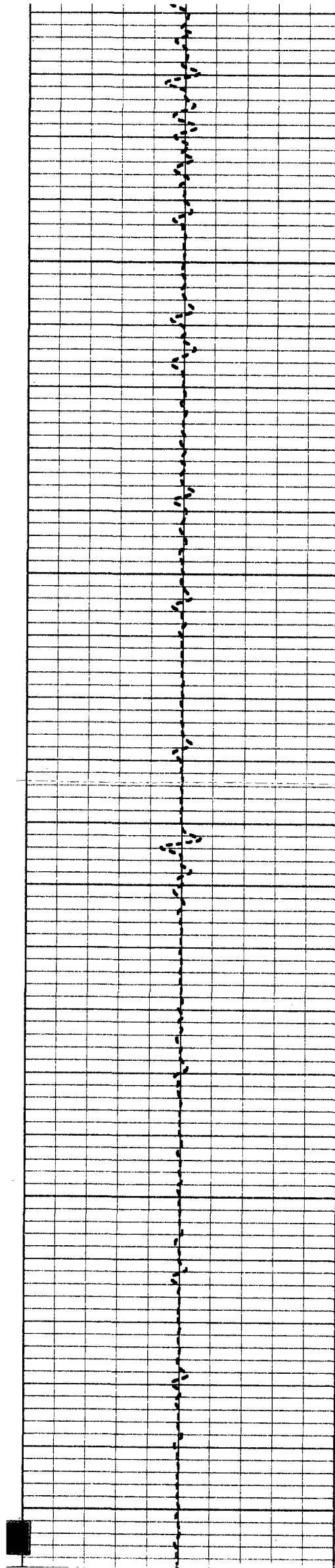
88.2

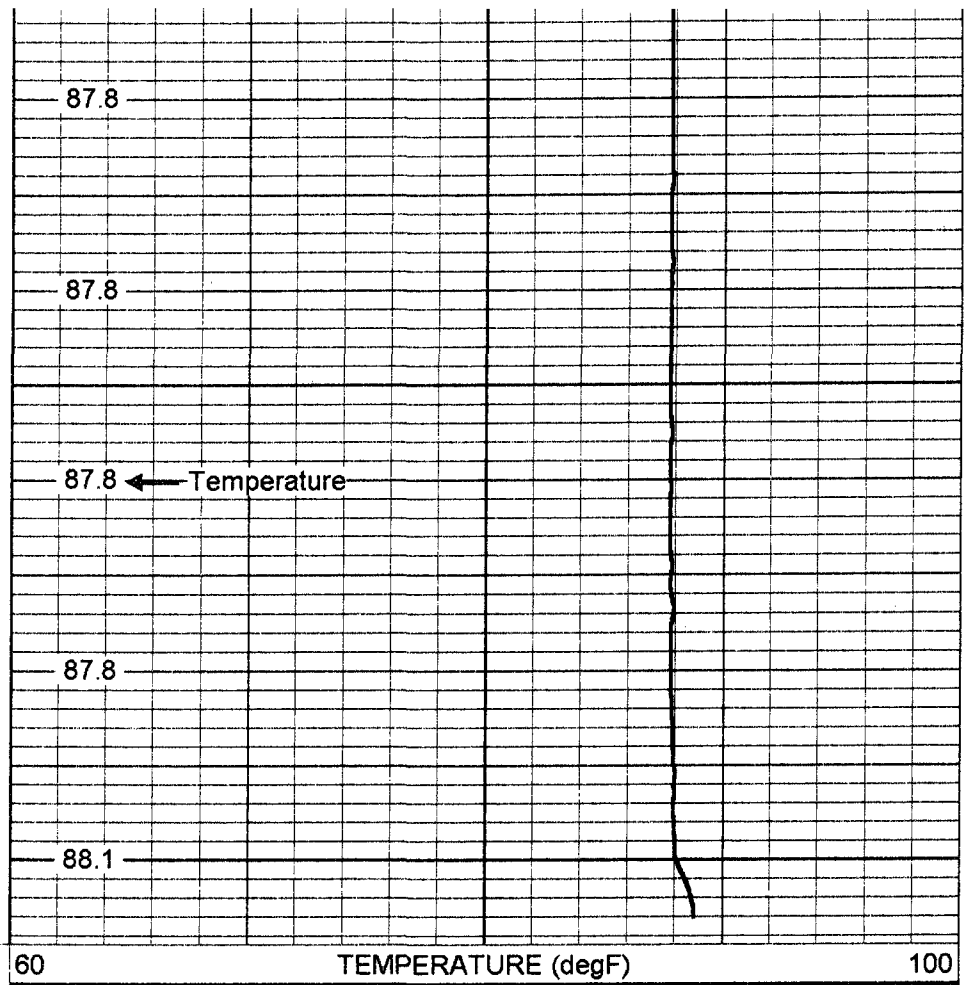
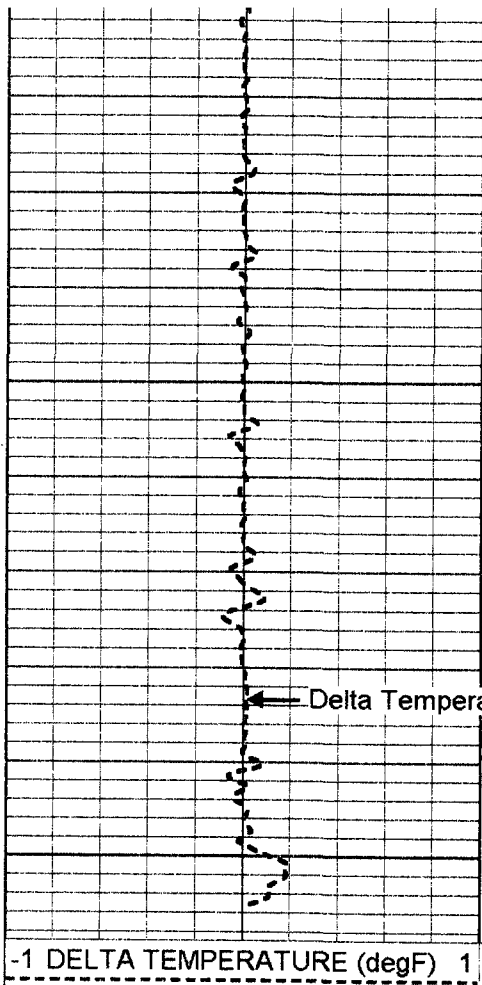
88.2

88.1

88.3

88.0

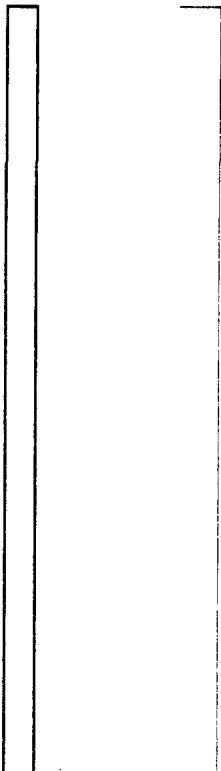




Temperature Calibration Report

Serial Number: 951  
 Tool Model: RTS  
 Performed: Thu Aug 25 10:15:24 2005

Point #	Reading		Reference	
1	410.1	cps	41	degF
2	810.2	cps	81	degF
3	1570.6	cps	157	degF



TEMP-RTS (951)  
70.00 lb 1.69 in OD 25.50 ft

TEMP 0.10 ft

Dataset:	run1/pass1
Total Length:	25.50 ft
Total Weight:	70.00 lb
O.D.	1.69 in