



GAMMA TEMPERATURE

①

686727

DEEP MONITOR WELL

COMPANY : DIVERSIFIED DRILLING
 WELL : DEEP MONITOR WELL
 LOCATION/FIELD : PORT ST. LUCIE/SOUTHPORT WWTP
 COUNTY : ST. LUCIE
 STATE : FL
 SECTION :

OTHER SERVICES:
 NONE

DATE : 08/17/95
 DEPTH DRILLER : 840
 LOG BOTTOM : 821.80
 LOG TOP : 3.40

PERMANENT DATUM : PL
 ELEU. PERM. DATUM: N/A
 LOG MEASURED FROM: PL
 DRL MEASURED FROM: PL

ELEVATIONS
 KB : N/A
 DF : N/A
 GL : N/A

CASING DRILLER : 840
 CASING TYPE : STEEL
 CASING THICKNESS: .5

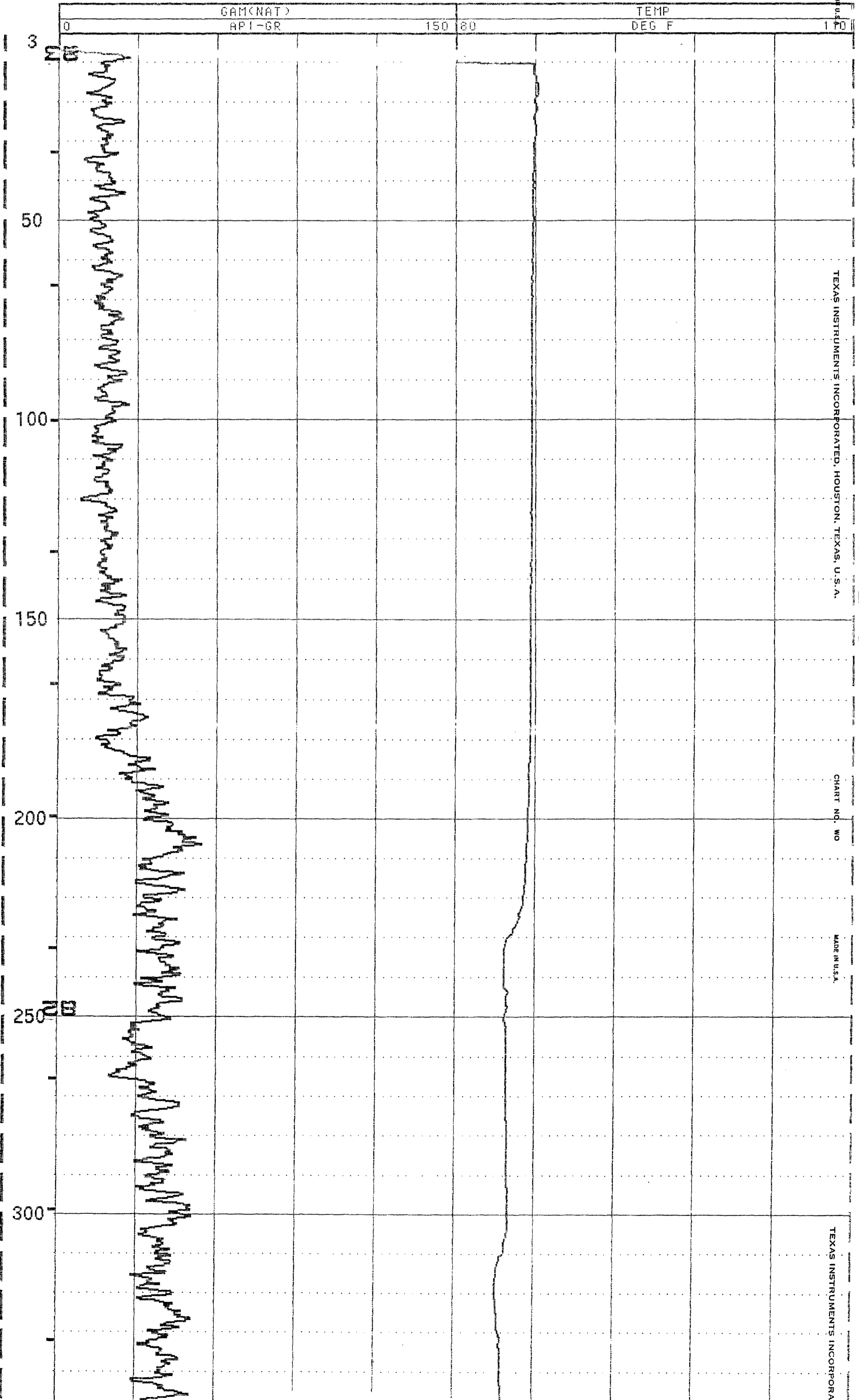
LOGGING UNIT : 1
 FIELD OFFICE : DFB
 RECORDED BY : M. SCHILLING

BIT SIZE :
 MAGNETIC DECL. :
 MATRIX DENSITY :
 FLUID DENSITY :
 NEUTRON MATRIX :
 REMARKS :

BOREHOLE FLUID : MUD
 RM :
 RM TEMPERATURE :
 MATRIX DELTA T :
 FLUID DELTA T :

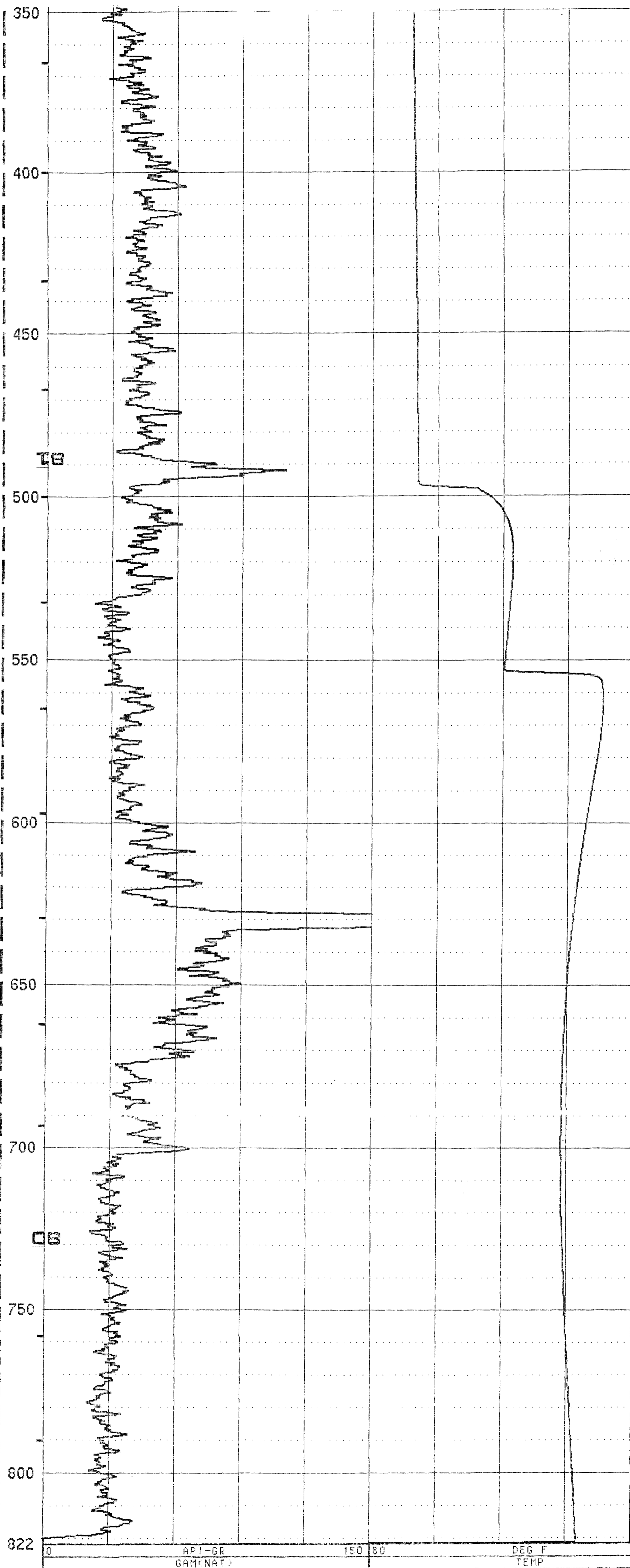
FILE : ORIGINAL
 TYPE : 9041A
 LOG : 2
 PLOT : CEMENT 0
 THRESH:

OBSERVER: JOHN SKOWRONEK - MONTGOMERY WATSON
 LOGGED UNDER STATIC CONDITIONS FOR 1ST STAGE OF CEMENTING OF 14" CASING
 ALL SERVICES PROVIDED SUBJECT TO STANDARD TERMS AND CONDITIONS



TEXAS INSTRUMENTS INCORPORATED, HOUSTON, TEXAS, U.S.A.
 CHART NO. WO
 MADE IN U.S.A.

HOUSTON, TEXAS, U.S.A. CHART NO. MO MADE IN U.S.A. TEXAS INSTRUMENTS INCORPORATED, HOUSTON, TEXAS, U.S.A. CHART NO. MO MADE IN U.S.A. TEXAS INSTRUMENTS INCORPORATED, HOUSTON, TEXAS, U.S.A. CHART NO. MO MADE IN U.S.A. TEXAS INSTRUMENTS INCORPORATED, HOUSTON, TEXAS, U.S.A.



API-GR 150 80 DEG F TEMP