

686702

**Schlumberger**  
**TEMPERATURE SURVEY**

COUNTY	ST. LUCIE	COMPANY	DIVERSIFIED DRILLING CORP.
FIELD	SOUTHPORT WWTP	WELL	DMW-1A
LOCATION	DMW 1A	COUNTY	ST. LUCIE
WELL	DMW 1A	STATE	FLORIDA
COMPANY	DIVERSIFIED DRILLING CORP.	FIELD	SOUTHPORT WWTP
LOG MEASURED FROM	GL	Other Services:	WFL
PERMANENT DATUM	N @ A	API SERIAL NO.	
LOG MEASURED FROM	GL	SECT.	
DATE	16-NOV-1995	TWP.	
Run No.	ONE	RANGE	
Depth Driller	1909.0 F	Elev.	above Perm. Datum
Depth Logger (Schl.)	1900.0 F	Elev.: K.B.	GL
Btm. Log Interval	1900.0 F	D.F.	
Top Log Interval	0.0 F		
Type Fluid In Hole	WASTE WATER		
Salinity NACL	19000.0 PPM		
Density	8.50 LB/G		
Fluid Level	0.0 F		
Max. Rec. Temp.	80.0 DEG F		
Deviation	0 DEG		
Logger on Bottom	1424 NOV 16 1995		
Equip. Location	8511 NATCHIEZ		
Recorded By	MICHAEL WELLS		
Witnessed By			
Bit Size			
Depth			
Size	6 5/8"		
Weight			
Casing Top-Driller			
Casing Top-Logger	1897.0 F		
Casing Shoe-Driller	1871.0 F		
Casing-Logger	1871.0 F		

The well name, location and borehole reference data were furnished by the customer.

All interpretations are opinions based on inferences from electrical or other measurements and we cannot, and do not guarantee the accuracy or correctness of any interpretations, and we shall not, except in the case of gross or willful negligence on our part, be liable or responsible for any loss, costs, damages or expenses incurred or sustained by anyone resulting from any interpretations made by any of our officers, agents or employees. These interpretations are also subject to Clause 4 of our General Terms and Conditions as set out in our current Price Schedule.

Run No.	ONE
Service Order No.	528291
Logging Speed	2000.0 F/HR
<b>EQUIPMENT DATA</b>	
Tool Number 1	PTS A 333
Tool Number 2	ATC CB 1569
Tool Number 3	CAL U 1103
Tool Number 4	
Tool Number 5	
Tool Number 6	
Tool Number 7	
Tool Number 8	
Tool Number 9	
Tool Number 10	CREW: *
Tool Number 11	WEAVER
Tool Number 12	BURGET

**REMARKS:**  
PUMPING RATE OF 100 GALLONS/MINUTE  
CASING O.D. 6.625 CASING ID 5.45  
LOGGED BOTTOM OF CASING @1871 FEET

**PARAMETERS**

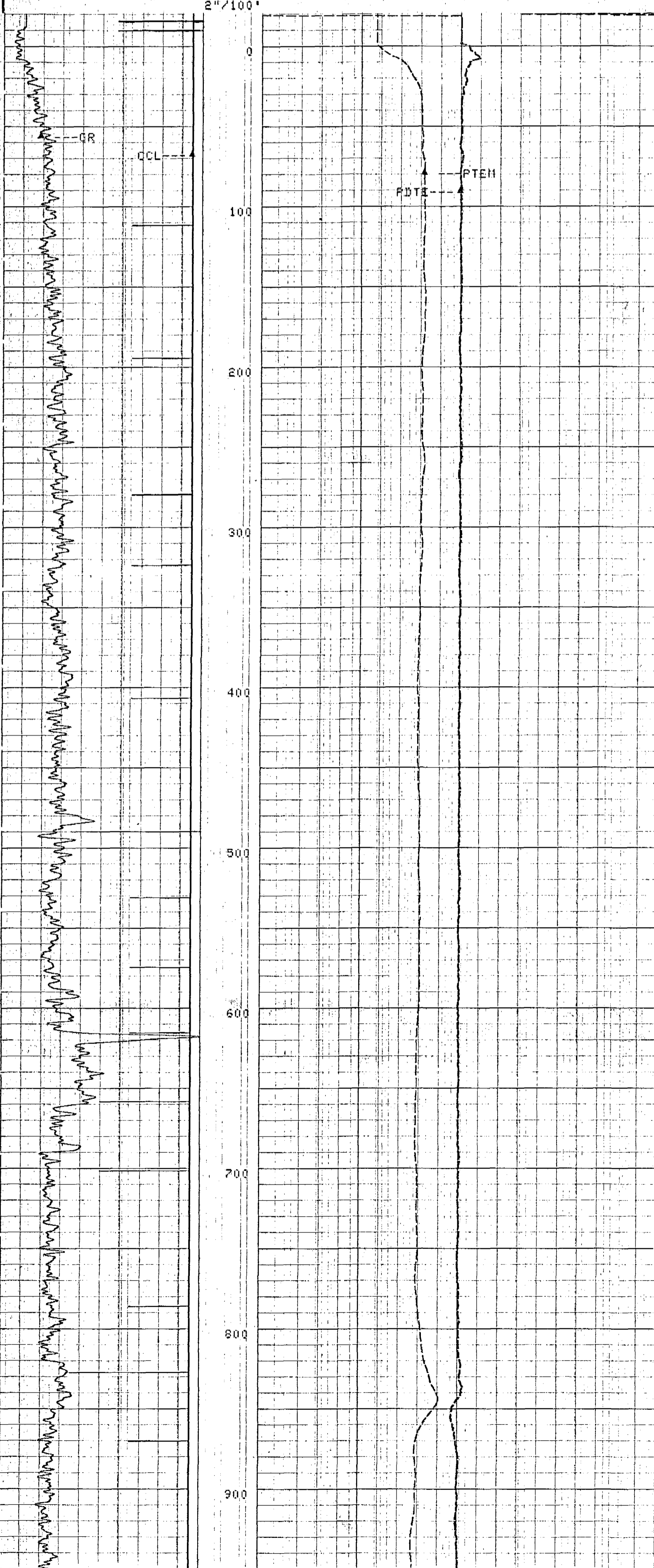
NAME	VALUE	UNIT	NAME	VALUE	UNIT
NMUD	8.30000	LB/G	PDSH	0.0	G/C3
SGSH	0000A-00011		CDAT		
NCJT	GSRE		FCHD	CSID	
PTHR	10.0000	F/MN	NTHR	-10.0000	F/MN
TIRA	.500000		VPCF	.830000	
DEVI	0.0	DEG	FDSH	0.0	G/C3
QIQP	FLOW		TCSH	0.0	IN
BS	3.75000	IN	BHS	CASE	

**SENSOR MEASURE POINT TO TOOL ZERO**

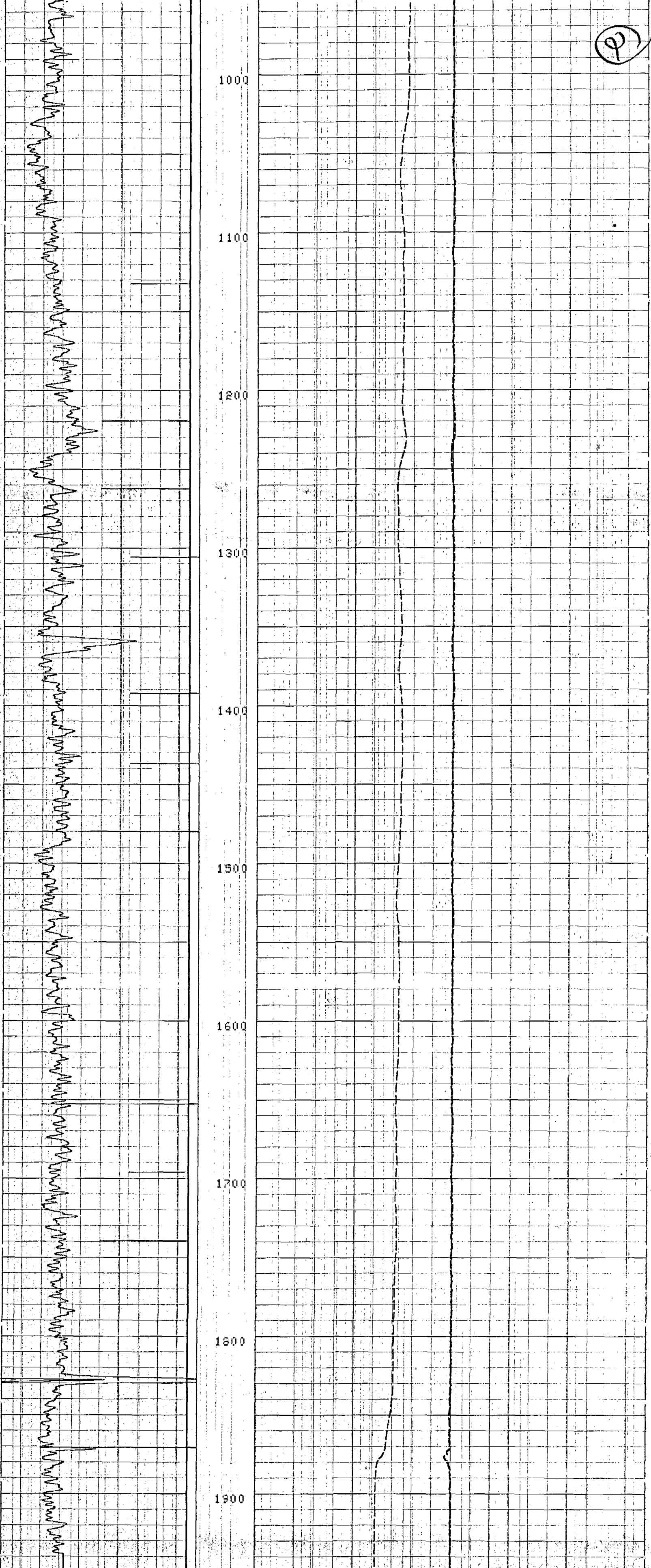
CALU	20.1	FEET	DTT	20.1	FEET
EXP	20.1	FEET	PTSA	3.8	FEET
ATTB	11.2	FEET			

0.0	GR (GAPI)	80.000	70.000	PTEM<DEGF>	90.000
-19.00	CCL	1.0000	-1.000	PDTE<DFZF>	1.0000

CP 40.2 FILE 17 16-NOV-1995 14:26 (DOWN)



9



2"/100'

CP 40.2 FILE 17 16-NOV-1995 15:05 (DOWN)

0.0	80.000	70.000	90.000
GR (GAPI)		PTM(DEGF)	
-19.00	1.0000	-1.000	1.0000
CCL		PDTE(DF/F)	

DATA ACQUIRED LOGGING DOWN

BEFORE SURVEY CALIBRATION SUMMARY

PERFORMED: 16-NOV-1995 11:26  
PROGRAM FILE: FLS (VERSION 40.2 93/10/14 93/10/14)

ATTB DETECTOR CALIBRATION SUMMARY

GR	MEASURED BKGD	JIG	CALIBRATED	UNITS
	E	137	135	GAPI

BACK: 16-NOV-1995 11:23 JIG: 16-NOV-1995 11:26 COMP: 16-NOV-1995 11:26

PTSA CALIBRATION SUMMARY

GRADIMANOMETER SURFACE CALIBRATION SUMMARY

CGCA= 1.00000 CGCB= 0.0

PTSA CALIBRATION SUMMARY

MANOMETER SURFACE CALIBRATION SUMMARY

CMCE= 0.0  
MD0=381.680 ME0=-2366.41

PTS CALIBRATION SUMMARY

GRADID. VCO CALIBRATION SUMMARY

GVC0= 1.12210 GVC1= 3.23205 GVC2= .000451

PTS CALIBRATION SUMMARY

MANOMETER VCO CALIBRATION SUMMARY

MVC0= .14680 MVC1= .18431 MVC2= .000021

PTS CALIBRATION SUMMARY

WELL-TEMP. VCO CALIBRATION SUMMARY

TVC0=-84.2081 TVC1= 2.68712 TVC2= .000746

CP 40.2 FILE 12 16-NOV-1995 11:26

COMPANY	DIVERSIFIED DRILLING CORP.	SCHL. FR	1930.0 F
WELL	DMW-1A	SCHL. TD	1960.0 F
FIELD	SOUTHPORT WWTP	DRLR. TD	1906.0 F
COUNTY	ST. LUCIE	STATE	FLORIDA
		Elev:	KB
			DF
			GL



TEMPERATURE SURVEY