

692848 (1)



**GAMMA RAY TEMPERATURE**

2T

546

**ASR WELL**

COMPANY : DIVERSIFIED DRILLING  
 WELL : ASR WELL  
 LOCATION/FIELD : CITY OF WEST PALM BEACH WTP  
 COUNTY : PALM BEACH  
 STATE : FLORIDA  
 SECTION :

OTHER SERVICES:  
 NONE

DATE : 01/06/97 PERMANENT DATUM : PL ELEVATIONS  
 DEPTH DRILLER : 990 ELEV. PERM. DATUM: N/A KB : N/A  
 LOG BOTTOM : 599.70 LOG MEASURED FROM: PL DF : N/A  
 LOG TOP : 4.00 DRL MEASURED FROM: PL GL : N/A

CASING DRILLER : 986 LOGGING UNIT : 1  
 CASING TYPE : STEEL FIELD OFFICE : DFB  
 CASING THICKNESS: .5 RECORDED BY : M. SCHILLING

BIT SIZE : 35 BOREHOLE FLUID : MUD FILE : ORIGINAL  
 MAGNETIC DECL. : RM TYPE : 9041A  
 MATRIX DENSITY : RM TEMPERATURE : LOG : 0  
 FLUID DENSITY : MATRIX DELTA T : PLOT : CEMENT 6  
 NEUTRON MATRIX : FLUID DELTA T : THRESH:

REMARKS :  
 OBSERVER: MURDOCK MONROE - BARNES, FERLAND & ASSOCIATES  
 LOGGED INSIDE 24-INCH CASING AFTER APPROX. 9 HRS AFTER 1ST STAGE OF CEMENTING  
 ALL SERVICES PROVIDED SUBJECT TO STANDARD TERMS AND CONDITIONS

TEXAS INSTRUMENTS INCORPORATED, HOUSTON, TEXAS, U.S.A.

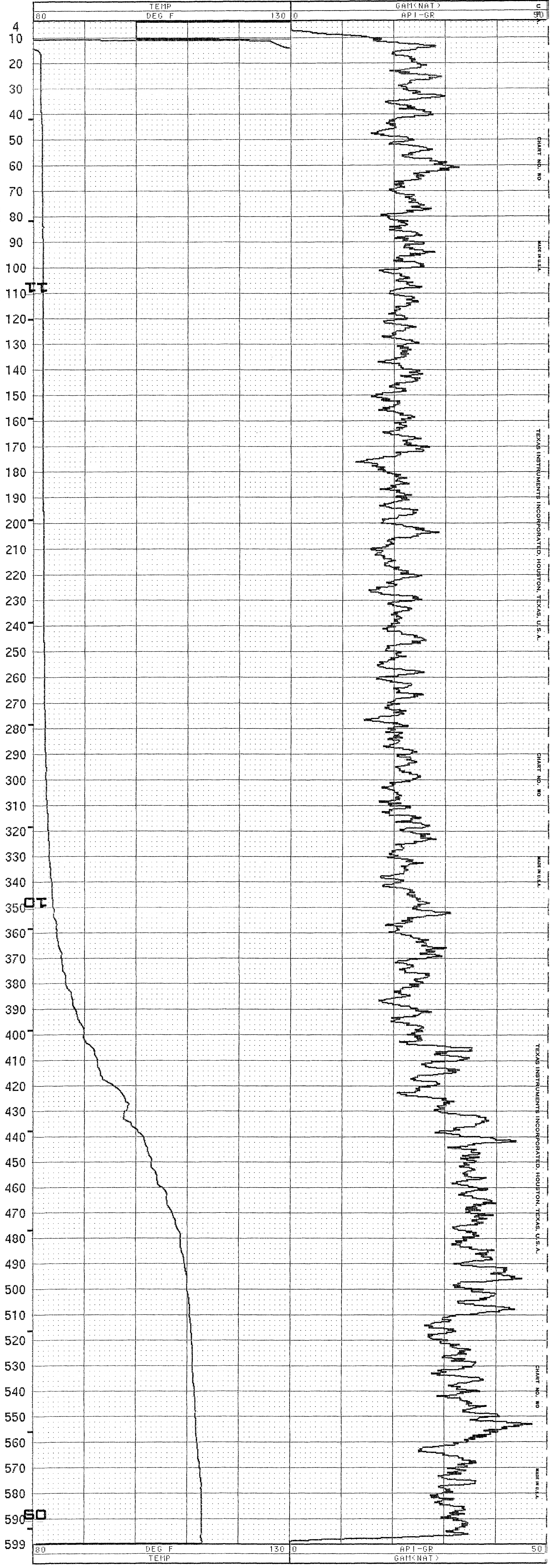


CHART NO. 00

MADE IN U.S.A.

TEXAS INSTRUMENTS INCORPORATED, HOUSTON, TEXAS, U.S.A.

CHART NO. 00

MADE IN U.S.A.

TEXAS INSTRUMENTS INCORPORATED, HOUSTON, TEXAS, U.S.A.

CHART NO. 00

MADE IN U.S.A.