

Company **CH2M HILL** Well **IW #1** **678586**
 Field **BOYNTON BEACH**
 County **PALM BEACH** State **FLORIDA**

Company **CH2M HILL**
 Well **IW #1**
 Field **BOYNTON BEACH**
 County **PALM BEACH** State **FLORIDA**
 Location **BOYNTON BEACH WEST W.T.P.**

Permanent Datum **PAD** Elevation
 Log Measured From **PAD**
 Drilling Measured From **PAD**
 Other Services: **SEE REMARKS**

Date **15 MARCH 2002**
 Run Number **RTS-TEMP**
 Depth Driller **3310**
 Depth Logger **3150**
 Bottom Logged Interval **3150**
 Top Log Interval **SURFACE**
 Open Hole Size **NA**
 Type Fluid **WATER**
 Density / Viscosity **NA**
 Max. Recorded Temp. **76 DEGF**
 Estimated Cement Top **NA**
 Time Well Ready **0000**
 Time Logger on Bottom **0000**
 Equipment Number **102 FTM FTMERS**
 Location **LEE**
 Witnessed By **D.MC NABB**

Recorded By **LEE**
 Borehole Record: **Bottom**
 Run Number: **Bottom**
 Borehole Record: **Top**
 Run Number: **Bottom**
 Size: **11.78"** **54" W.T.** **2720'**
16" **50" W.T.** **SURFACE** **2760'**

<<< Fold Here >>>

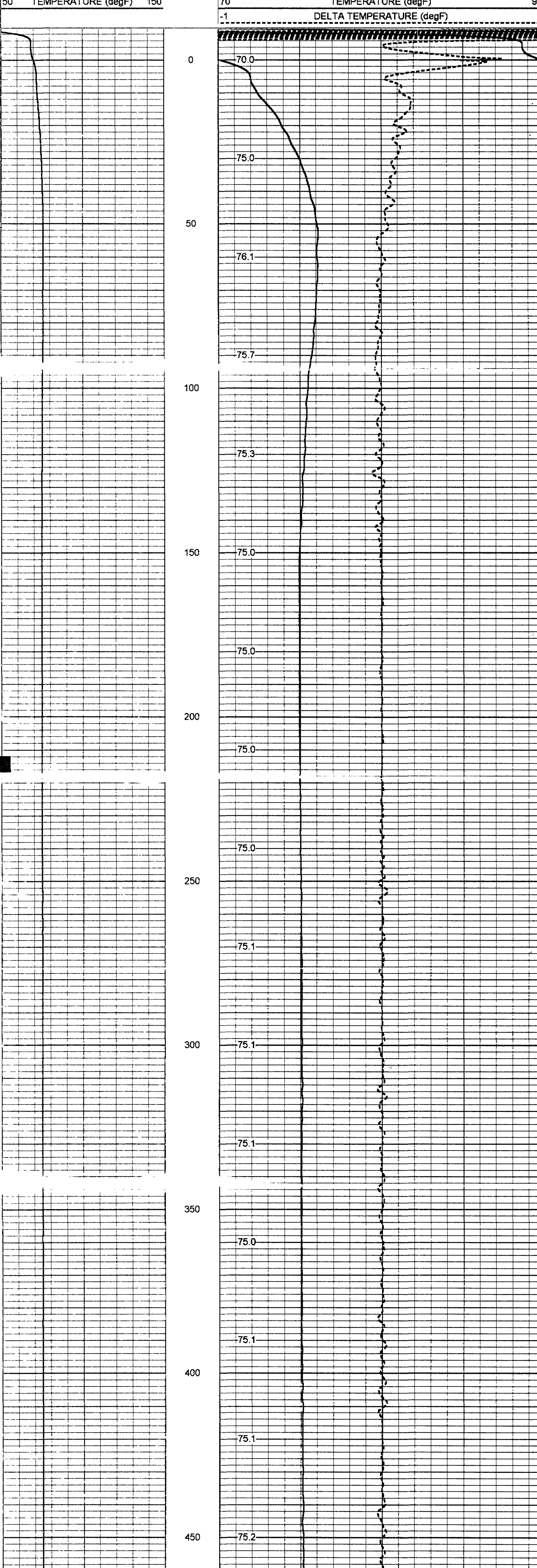
All interpretations are opinions based on inferences from electrical or other measurements and we cannot and do not guarantee the accuracy or correctness of any interpretation, and we shall not, except in the case of gross or willful negligence on our part, be liable or responsible for any loss, costs, damages, or expenses incurred or sustained by anyone resulting from any interpretation made by any of our officers, agents or employees. These interpretations are also subject to our general terms and conditions set out in our current Price Schedule.

Comments

RTS

YOUNGQUIST BROTHERS, Inc
 GEOPHYSICAL LOGGING DIVISION
TEMPERATURE

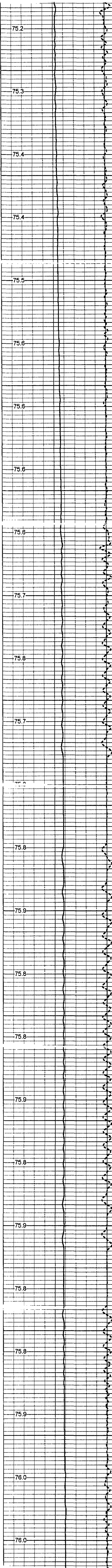
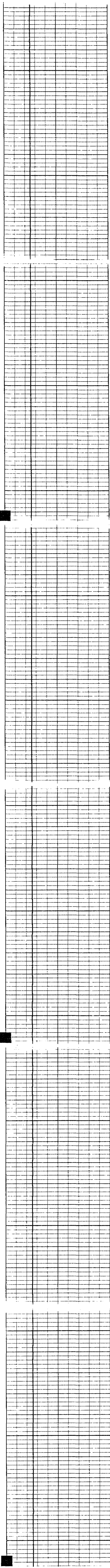
Database File: **boyiw1.db**
 Dataset Pathname: **run6/TEMP**
 Dataset Creation: **Fri Mar 15 07:39:50 2002 by Log VER_5.4**
 Charted by: **Depth in Feet scaled 1:240**



12

500
550
600
650
700
750
800
850
900
950
1000
1050
1100
1150
1200

75.2
75.3
75.4
75.4
75.5
75.6
75.6
75.6
75.7
75.8
75.7
75.8
75.9
75.8
75.8
75.9
75.8
75.9
75.8
75.9
76.0
76.0



(10)

76.1

1250

76.1

1300

76.1

76.3

1350

76.3

1400

76.4

1450

76.4

76.4

1500

76.3

1550

76.3

76.3

1600

76.4

76.2

1650

76.1

76.0

1700

75.9

75.8

1750

75.4

1800

75.2

75.0

1850

75.0

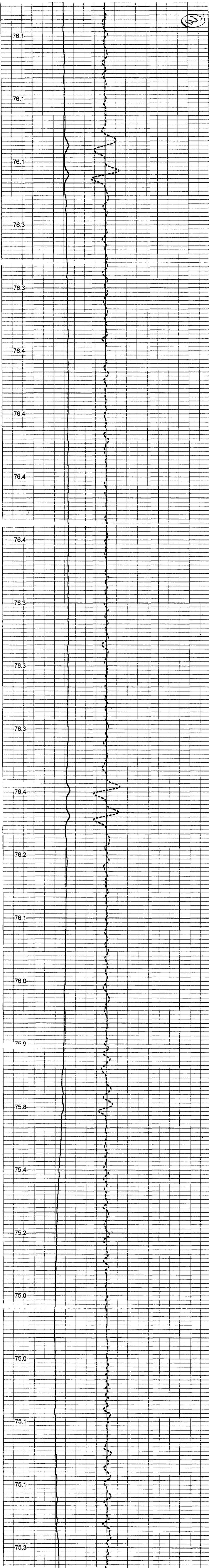
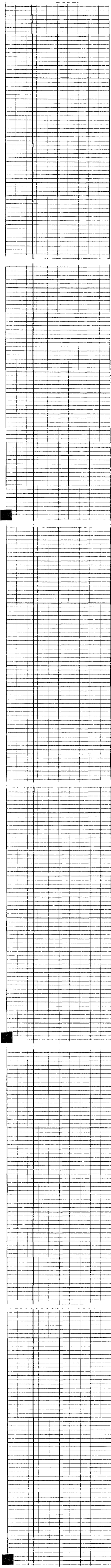
1900

75.1

75.1

1950

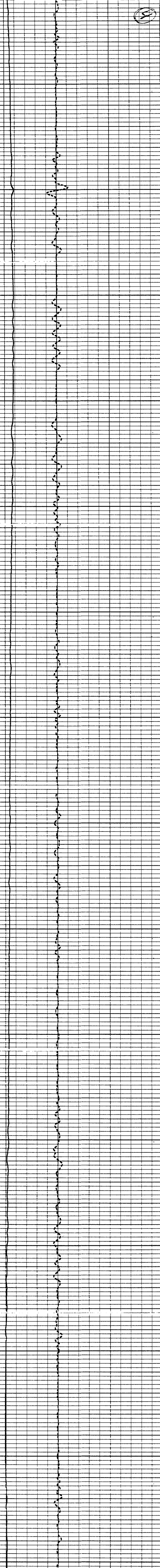
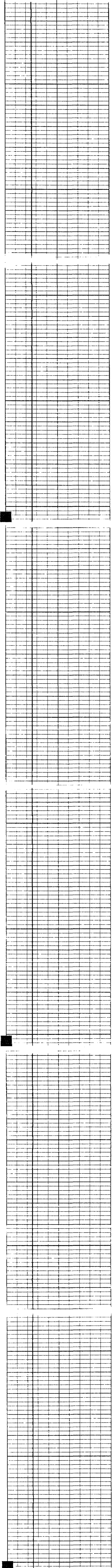
75.3





2000
2050
2100
2150
2200
2250
2300
2350
2400
2450
2500
2550
2600
2650
2700

75.5
75.6
75.7
75.8
75.9
75.9
75.8
75.7
75.6
75.6
75.5
75.5
75.4
75.4
75.4
75.4
75.3
75.3
75.2
75.1
75.1
75.0
74.9
75.1
75.1



17

2750
2800
2850
2900
2950
3000
3050
3100
3150

74.9
74.8
74.7
74.5
74.3
72.9
72.4
72.4
72.2
72.0
72.0
72.1
72.2
72.3
71.9

← TEMPERATURE

← TEMPERATURE

← DELTA TEMPERATURE

50 TEMPERATURE (degF) 150

70 TEMPERATURE (degF) 90

-1 DELTA TEMPERATURE (degF) 1



Temperature Calibration Report

Serial Number: 952
Tool Model: RTS
Performed: Thu Mar 14 19:23:59 2002

6

Point	Reading	Unit	Reference	Unit
1	338.11	cps	34	degF
2	789.25	cps	78	degF
3	1553.28	cps	152	degF

TEMP-RTS (952) 70.00 lb 1.69 in OD 27.50 ft

TEMP 0.10 ft

Dataset: run6/TEMP
Total Length: 27.50 ft
Total Weight: 70.00 lb
O.D.: 1.69 in