

Company **CAMP DRESSER & MCKEE INC.**  
 Well **IW #7**  
 Field **EAST CENTRAL REGIONAL W.R.F.**  
 County **PALM BEACH** State **FLORIDA**  
 Location  
 Permanent Datum **PAD** Elevation  
 Log Measured From **PAD**  
 Drilling Measured From **PAD**  
 Other Services  
 SEE COMMENTS

Company **CAMP DRESSER & MCKEE INC.**  
 Well **IW #7**  
 Field **EAST CENTRAL REGIONAL W.R.F.**  
 County **PALM BEACH** State **FLORIDA**  
 Location  
 Permanent Datum **PAD** Elevation  
 Log Measured From **PAD**  
 Drilling Measured From **PAD**  
 Other Services  
 SEE COMMENTS

Date **DEC-17-2003**  
 Run Number **EIGHTEEN**  
 Depth Driller **3685'**  
 Depth Logger **3685'**  
 Bottom Logged Interval **3685'**  
 Top Log Interval **CASING**  
 Open Hole Size **24"**  
 Type Fluid **WATER**  
 Density / Viscosity **NA**  
 Max. Recorded Temp. **NA**  
 Estimated Cement Top **NA**  
 Time Well Ready **ON ARRIVAL**  
 Time Logger on Bottom **0000**  
 Equipment Number **102**  
 Location **F.MYERS**  
 Recorded By **LEE**  
 Witnessed By **T. URAM**

Run Number	Bit	From	To	Run Number	Bit	From	To
FIFTEEN	34.5"	CASING	2972'				
SEVENTEEN	12.25"	CASING	3450'				
EIGHTEEN	24"	CASING	3685'				

Casing Record  
 Surface String **54"** Wgt/l **375 W.T.** Top SURFACE SURFACE SURFACE Bottom **114'**  
 Prod. String **44"** Wgt/l **375 W.T.** SURFACE SURFACE SURFACE **1017'**  
 Production String **36"** Wgt/l **375 W.T.** SURFACE SURFACE SURFACE **2200'**  
 Liner **26"** Wgt/l **500 W.T.** SURFACE SURFACE SURFACE **2962'**

<<< Fold Here >>>

All interpretations are opinions based on inferences from electrical or other measurements and we cannot and do not guarantee the accuracy or correctness of any interpretation, and we shall not, except in the case of gross or willful negligence on our part, be liable or responsible for any loss, costs, damages, or expenses incurred or sustained by anyone resulting from any interpretation made by any of our officers, agents or employees. These interpretations are also subject to our general terms and conditions set out in our current Price Schedule.

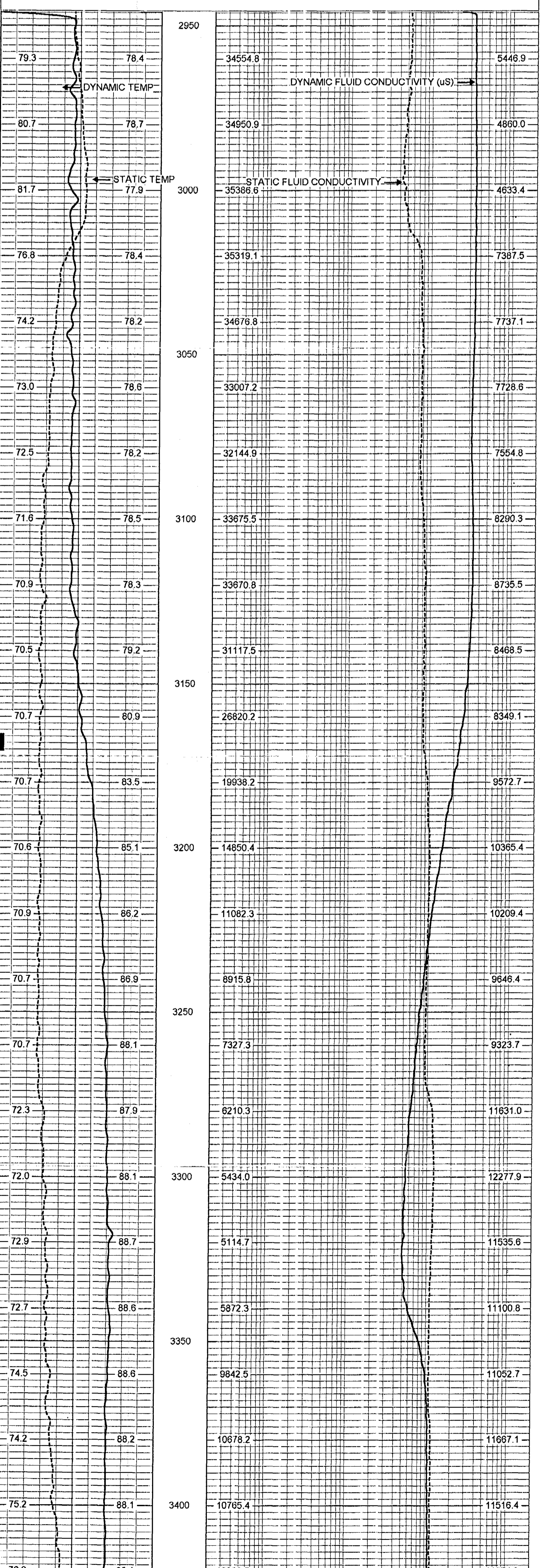
Comments

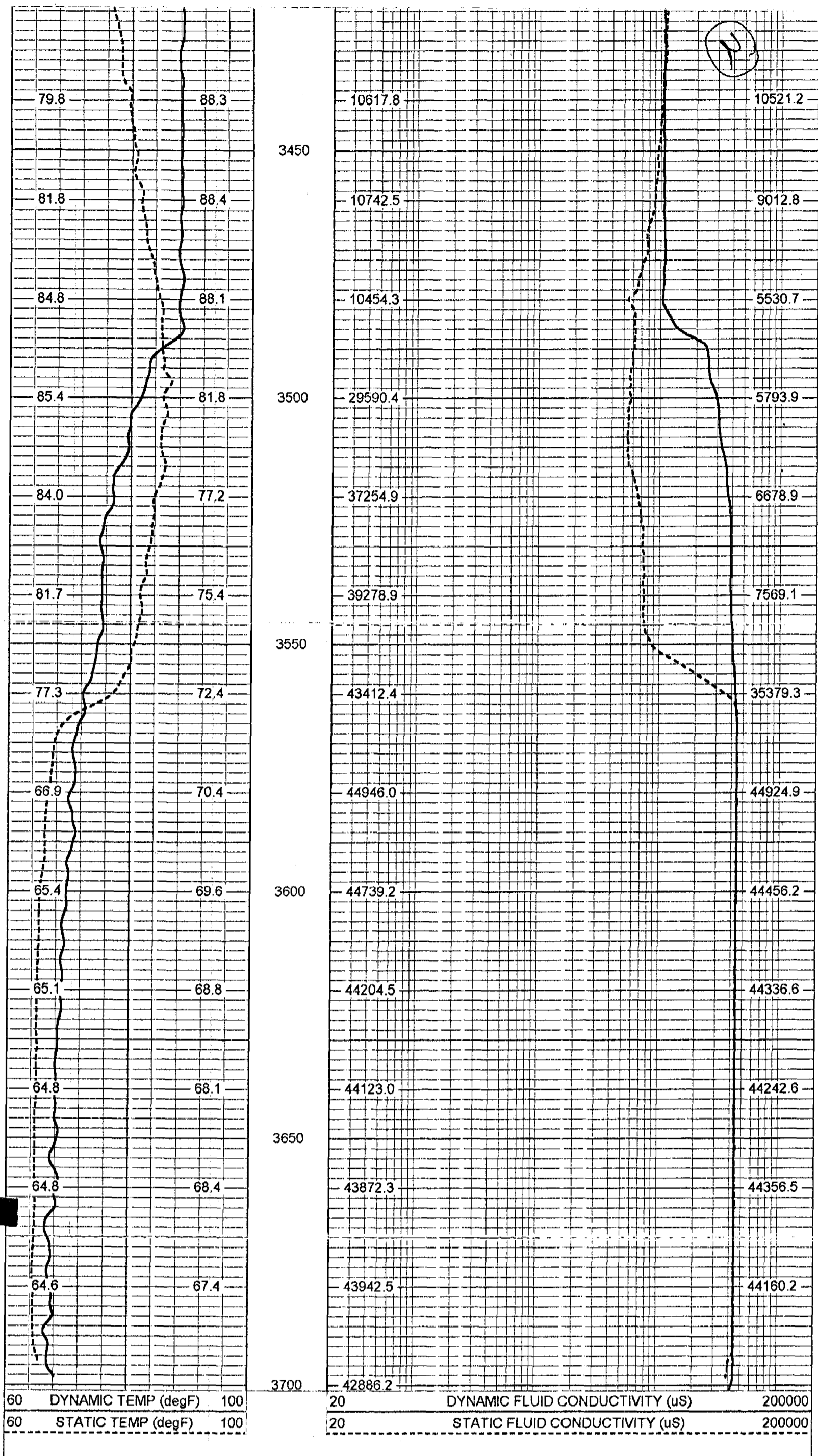
FLOWRATE = 480 GPM.

**MERGED FRT**

Database File: **wpbw7.db**  
 Dataset Pathname: **run18/FRTDYN**  
 Presentation Format: **frt\_mg**  
 Dataset Creation: **Wed Dec 17 16:12:06 2003 by Log 6.2\_B4**  
 Charted by: **Depth in Feet scaled 1:240**

60	DYNAMIC TEMP (degF)	100	20	DYNAMIC FLUID CONDUCTIVITY (uS)	200000
60	STATIC TEMP (degF)	100	20	STATIC FLUID CONDUCTIVITY (uS)	200000





FRT Calibration Report			
Serial Number:	31		
Tool Model:	SONDEX		
Performed:	Mon Apr 07 10:06:59 2003		
Point #	Reading		Reference
1	31.620	cps	1000.000
2	186.461	cps	10000.000
3	478.792	cps	25000.000
4	1027.350	cps	50000.000
5		cps	
6		cps	

Temperature Calibration Report				
Serial Number:	31			
Tool Model:	SONDEX			
Performed:	Mon Apr 07 10:25:47 2003			
Point #	Reading		Reference	
1	118.668	cps	36	degF
2	299.16	cps	77	degF
3	700.794	cps	160	degF

