

YOUNGQUIST BROTHERS, Inc
GEOPHYSICAL LOGGING DIVISION

FLUID CONDUCTIVITY TEMPERATURE LOG
701126

Company: **CAMP DRESSER & MCKEE INC.**
Well: **IW #7**
Field: **EAST CENTRAL REGIONAL W.R.F**
County: **PALM BEACH** State: **FLORIDA**

Location: **WEST PALM BEACH, FLORIDA**

Other Services: **SEE COMMENTS**

Permanent Datum: **PAD** Elevation: **K.B.**
Log Measured From: **PAD** **D.F.**
Drilling Measured From: **PAD** **G.L.**

Date: **10-OCT-2003**

Run Number: **NINE**
Depth Driller: **2310'**
Depth Logger: **2310'**
Bottom Logged Interval: **2310'**
Top Log Interval: **995'**
Open Hole Size: **12.25"**
Type Fluid: **WATER**
Density / Viscosity: **NA**
Max. Recorded Temp.: **NA**
Estimated Cement Top: **NA**
Time Well Ready: **ON ARRIVAL**
Time Logger on Bottom: **0000**
Equipment Number: **102**
Location: **FT. MYERS**
Recorded By: **LEE**
Witnessed By: **K. HOPFENSBERGER**

Borehole Record			Borehole Record				
Run Number	Bit	From	To	Run Number	Bit	From	To
ONE	58.5"	SURFACE	119'	FIVE	12.25"	CASING	1730'
TWO	17.5"	CASING	1050'	SIX	12.25"	CASING	1840'
THREE	44"	CASING	1023'	SEVEN	12.25"	CASING	2050'
FOUR	12.25"	CASING	1600'	NINE	12.25"	CASING	2310'

Casing Record: **Size 54"** **Wgt/Ft 375 W.T** **Top SURFACE** **Bottom 114'**
 Surface String: **Size 44"** **Wgt/Ft 375 W.T** **Top SURFACE** **Bottom 1017'**
 Prot. String: **Size 44"** **Wgt/Ft 375 W.T** **Top SURFACE** **Bottom 1017'**
 Production String: **Size 44"** **Wgt/Ft 375 W.T** **Top SURFACE** **Bottom 1017'**
 Liner: **Size 44"** **Wgt/Ft 375 W.T** **Top SURFACE** **Bottom 1017'**

<<< Fold Here >>>

All interpretations are opinions based on inferences from electrical or other measurements and we cannot and do not guarantee the accuracy or correctness of any interpretation, and we shall not, except in the case of gross or willful negligence on our part, be liable or responsible for any loss, costs, damages, or expenses incurred or sustained by anyone resulting from any interpretation made by any of our officers, agents or employees. These interpretations are also subject to our general terms and conditions set out in our current Price Schedule.

Comments

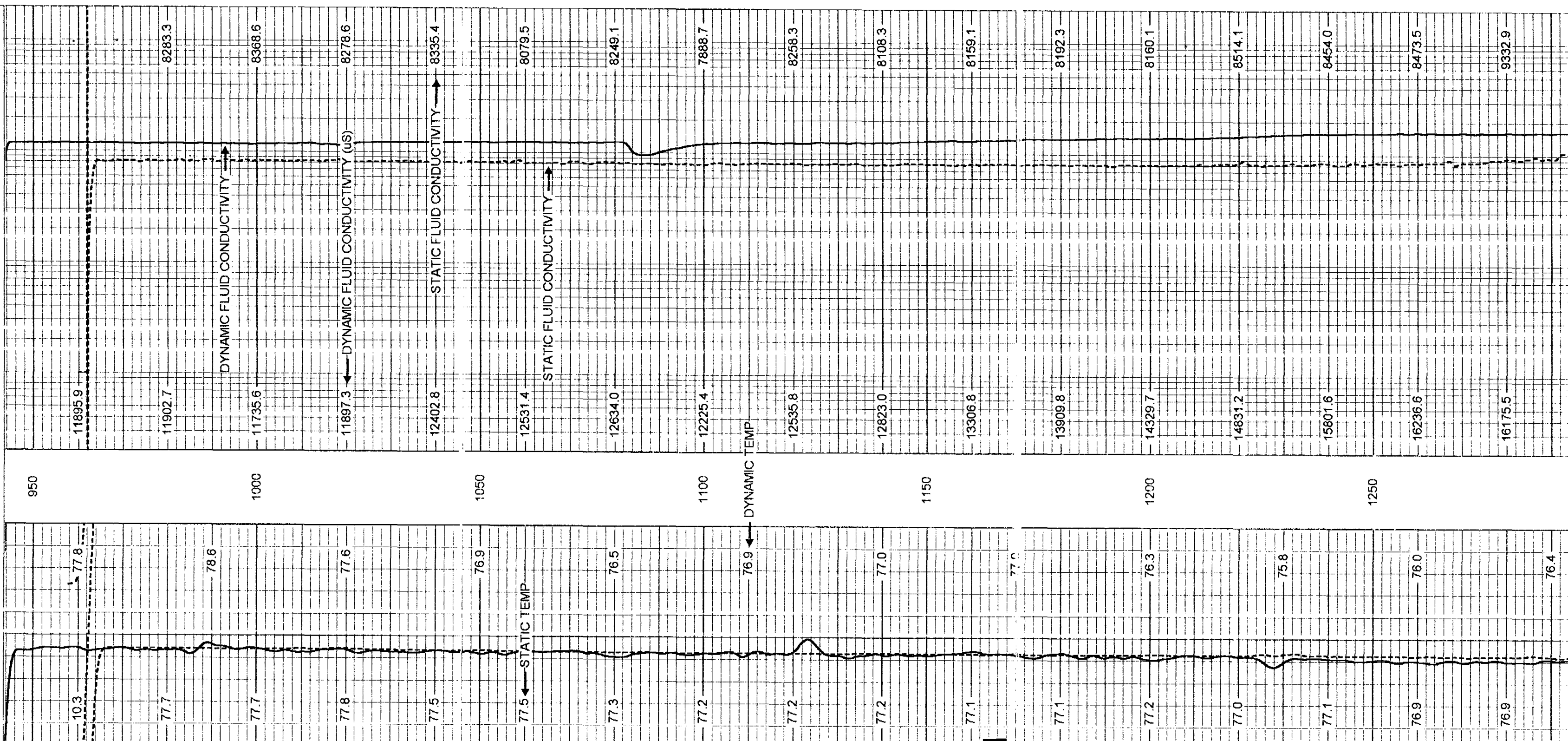
X-Y / GR
DIL/LL3/SP
BHTV/DHTVS
BHC/SONIC/VDL
FLOWMETER

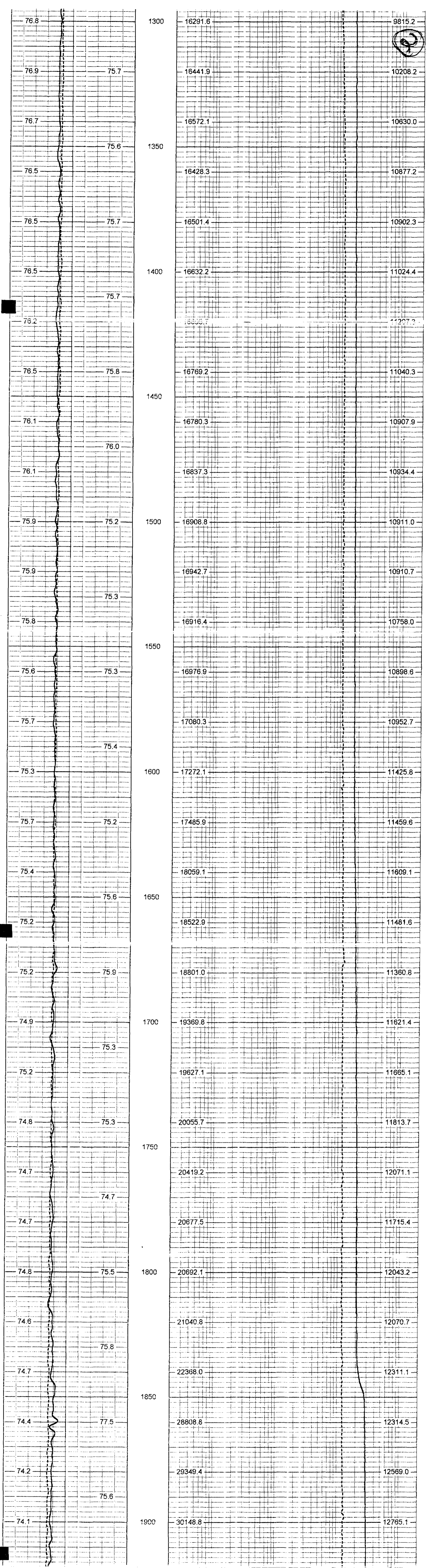
YOUNGQUIST BROTHERS, Inc
GEOPHYSICAL LOGGING DIVISION

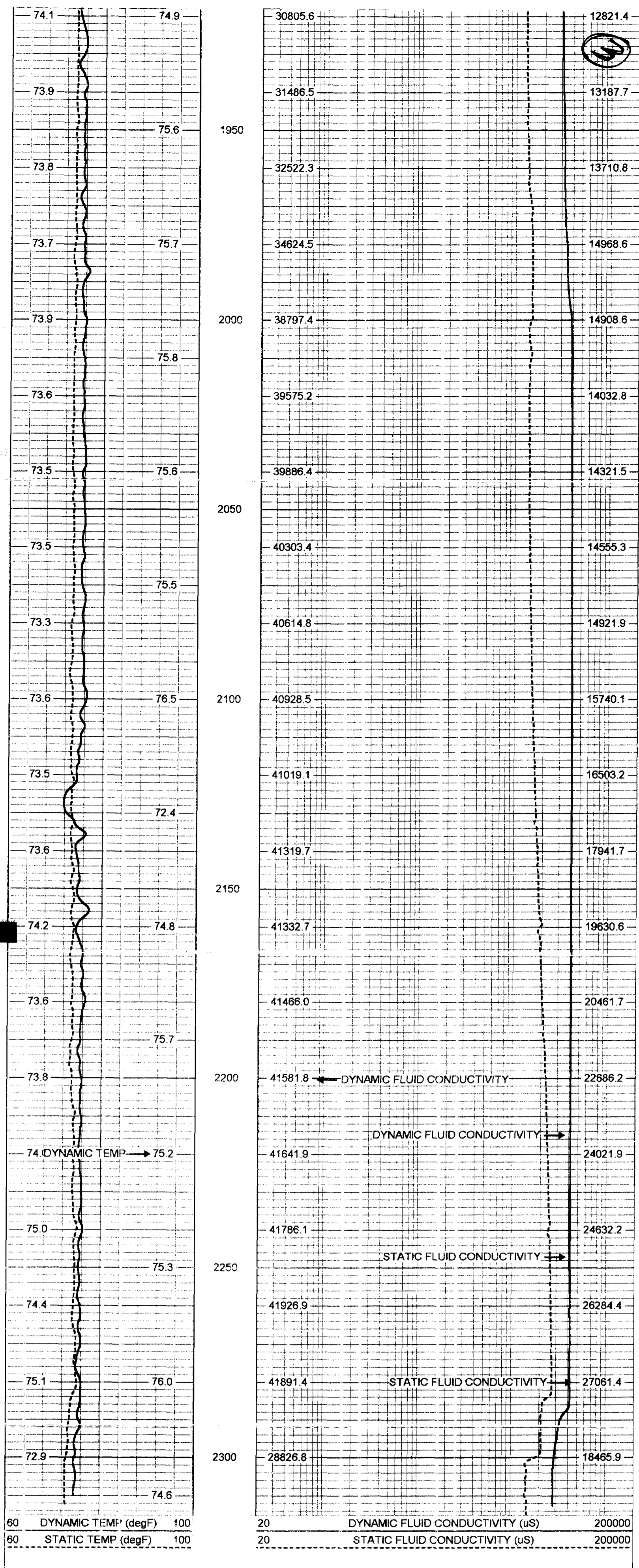
FRT MERGE

Database File: **wpbw7 db**
Dataset Pathname: **run9/FRTDYN**
Presentation Format: **frl_mg**
Dataset Creation: **Fri Oct 10 05:48:36 2003 BY Log b_z_b4**
Charted by: **Depth in Feet scaled 1:240**

60 DYNAMIC TEMP (degF) 100
60 STATIC TEMP (degF) 100







FRT Calibration Report

Serial Number: 31
 Tool Model: SONDEX
 Performed: Mon Apr 07 10:06:59 2003

Point #	Reading	Reference
1	31.620 cps	1000.000
2	186.461 cps	10000.000
3	478.792 cps	25000.000
4	1027.350 cps	50000.000
5		
6		

Temperature Calibration Report

Serial Number: 31
 Tool Model: SONDEX
 Performed: Mon Apr 07 10:25:47 2003

Point #	Reading	Reference
1	118.668 cps	36 degF
2	299.16 cps	77 degF
3	700.794 cps	160 degF

