



GEOPHYSICAL WELL SURVEY

1

Sheet 2 of 2

- Electric
- Gamma Ray
- Temperature
- Caliper
- Fluid Resistivity
- Fluid Velocity

69/325

CLIENT Miami-Dade Water & Sewer Authority Date 10/30/79
 Well No. I-3 Project No. BC55900.92

Location: State Florida County Dade
SW 1/4 SE 1/4 NE 1/4 Sec. 21 T. 56 N. R. 40 E.
 Logged by J. Price Observer R. Sproul

Owner: Miami-Dade Water & Sewer Authority
 Well: I-3

Driller: Alsay-Pippin Corp. Date Drilled: 1979
 Surface Elevation: 9.42 ft. Estimated Measured Above MSL
 T.D. Logged: 2662' T.D. Driller: 2700'

Hole Dia. 14-3/4" From 1800' To 2700' Dia. From To
 Casing I. D. 33" From 0 To 1800' Dia. From To
 Finish: Open hole Screen Gravel Other
 Water Level: 7.9 ft. Above MP at Above Land Surface
 Below Below

Yield: Flow 495 gpm Pump 495 gpm
 Drawdown: 25 ft. after 24 hours pumping @ 495 gpm
 Use: Dom. Stock PS Irr. Test
 Heating or cooling Drainage Disposal Obs.

Water Quality: Temp. °F: Sp. Cond. Iron ppm
 Cl⁻ ppm; SO₄²⁻ ppm; Total Hardness ppm
 Color Odor Taste

Remarks: LOGGED WHILE PUMPING @ 500 GPM

Log Scales

| | |
|---|---|
| Electric Log SP millivolts/inch Res ohms/inch | Fluid Resistivity ohm-meters/inch @ °F |
| Gamma Ray Log Counts/sec/in. Time Constant <u>4</u> sec. Logging speed <u>30</u> FPM | Fluid Velocity Counts/min/inch (stationary) FPM (continuous) Q = gpm |
| Temperature <u>1</u> °F/inch Logging speed <u>35</u> FPM | Caliper 6 inches to <u>26</u> inches Logging speed <u>40</u> FPM |

Water Samples
Depths sampled: _____

CH2M HILL
Water Resources Division
P.O. Box 1647
Gainesville, Florida 32602
(904) 377-2442

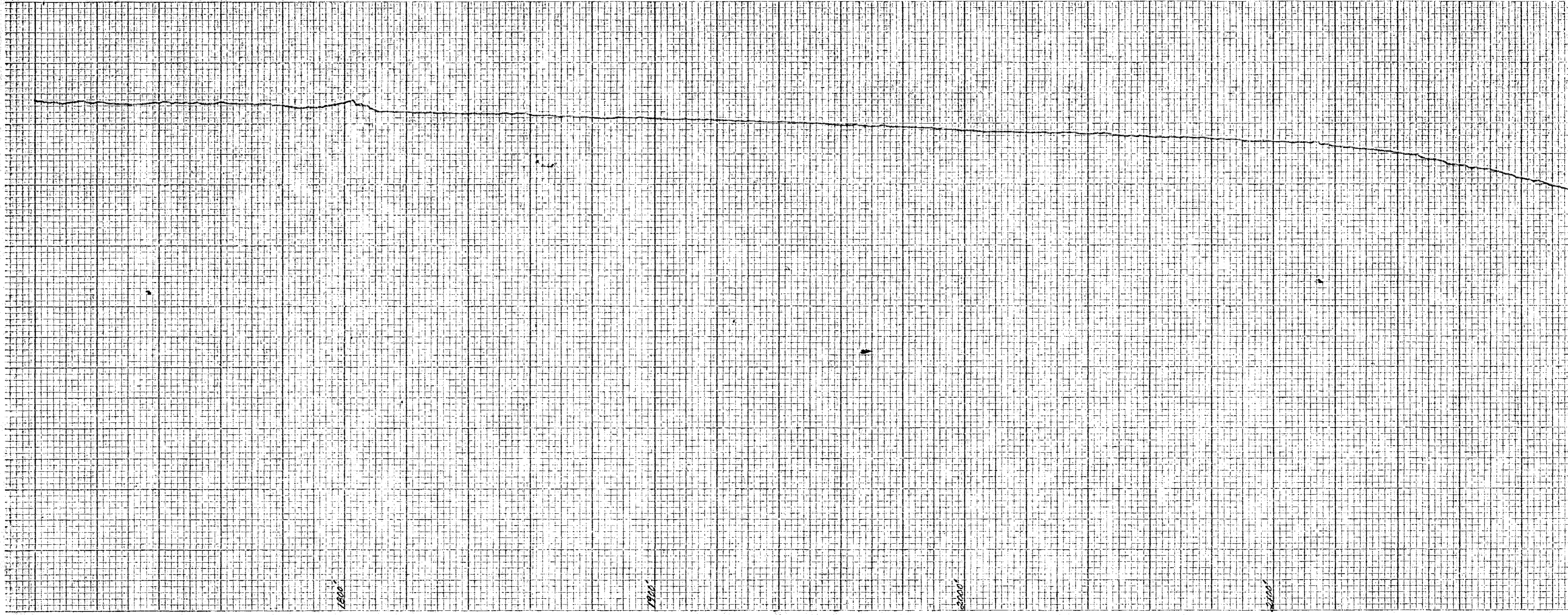


CHART NO. WH

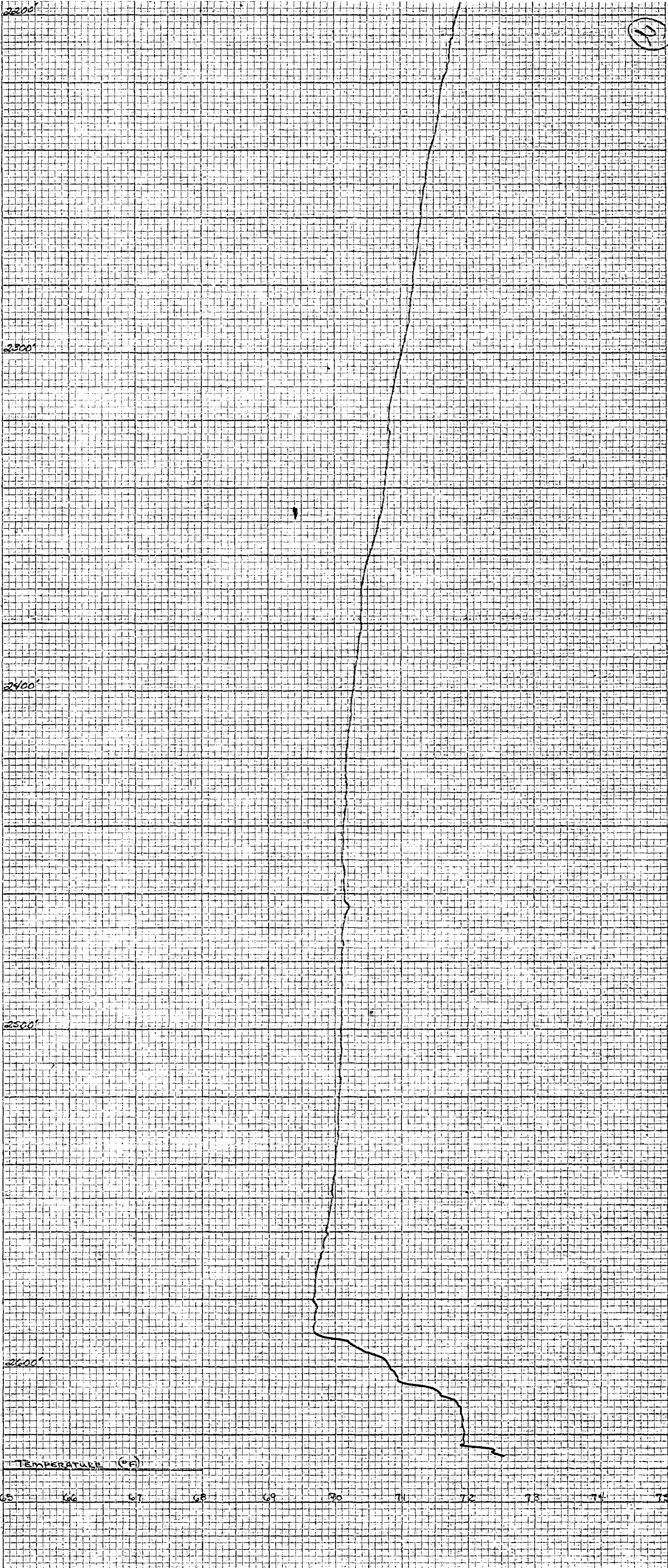
TEXAS INSTRUMENTS INCORPORATED, HOUSTON, TEXAS, U.S.A.

MADE IN U.S.A.

CHART NO. WH

TEXAS INSTRUMENTS INCORPORATED, HOUSTON, TEXAS, U.S.A.

MADE IN U.S.A.



FEEET LEFT

50

FEEET LEFT

50