

①



693775

CLIENT Miami Dade Water & Sewer Authority Date May 25, 1980

Well No. I-2 Project No. BC55900.92

Location: State Florida County Dade
 T. N E
 S R W

Logged by J. D. Lehnen Observer D. C. Snyder

Owner: Miami Dade Water & Sewer Authority
 Well: I-2
 Driller: Aisay Pippin Date Drilled: 1980
 Surface Elevation: 10 ft. Estimated Above MSL
 Measured
 T.D. Logged 2,640' T.D. Driller 2,640'
 Hole Dia. 12" From 1,800' To 2,640' Dia. From To
 Casing I. D. 33" From 0 To 1,800' Dia. From To
 Finish: Open hole Screen Gravel Other
 Water Level: ft. Above Below MP. Above Below Land Surface
 Yield: Flow gpm Pump gpm
 Drawdown: ft. after hours pumping @ gpm
 Use: Dom. Stock PS Ind. Irr. Test
 Heating or cooling Drainage Disposal Obs.

Water Quality:
 Temp. °F; Sp. Cond. ; Iron ppm
 Cl ppm; SO₄ ppm; Total Hardness ppm
 Color Odor Taste

Remarks: NOTE: Gamma Ray Log not run to total depth due to heavy mud in bottom of hole caking tool and causing improper readings.

- Electric
- Gamma Ray
- Temperature
- Caliper
- Fluid Resistivity
- Fluid Velocity

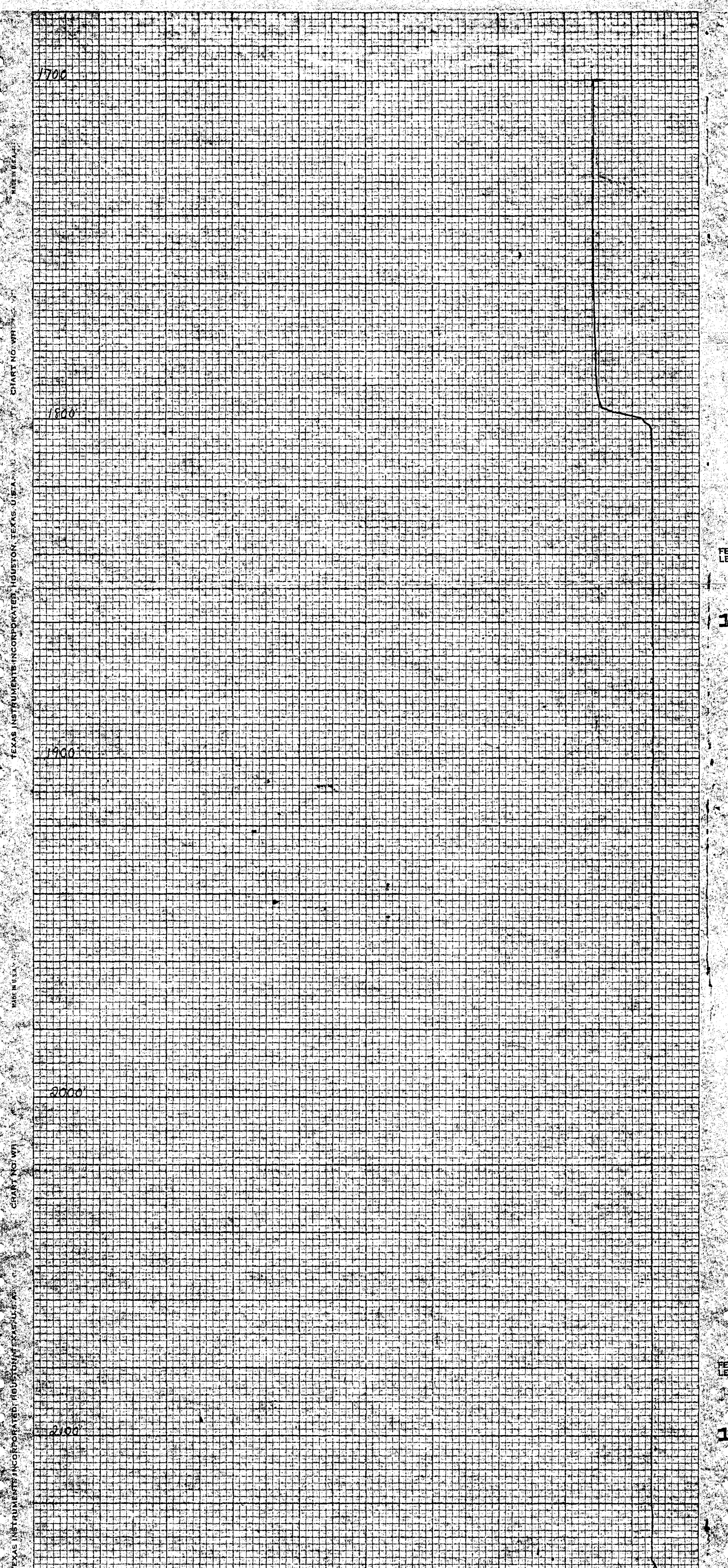
Log Scales	
Electric Log SP 25 millivolts/inch Res. ohm-meters/inch Res. 20 ohms/inch	Fluid Resistivity ohm-meters/inch @ °F
Gamma Ray Log 4 Counts/sec/in. Time Constant 4 sec. Logging speed 30 FPM	Fluid Velocity Counts/min/inch FPM (continuous) Q = gpm
Temperature 70 °F to 80 °F Logging speed 30 FPM	Caliper 10 inches to 30 inches Logging speed 35 FPM
Water Samples Depths sampled:	



CH2M HILL
 Water Resources Division
 P.O. Box 1647
 Gainesville, Florida 32602
 (904) 377-2442

GEOPHYSICAL WELL SURVEY

FE 1029



MADE IN U.S.A.
 TEXAS INSTRUMENTS INCORPORATED HOUSTON, TEXAS U.S.A.
 CHART NO. WF1
 CHART NO. WF1
 TEXAS INSTRUMENTS INCORPORATED HOUSTON, TEXAS U.S.A.

2

MADE IN U.S.A.

CHART NO. WH 100

TEXAS INSTRUMENTS INCORPORATED HOUSTON, TEXAS U.S.A.

MADE IN U.S.A.

CHART NO. WH 100

TEXAS INSTRUMENTS INCORPORATED HOUSTON, TEXAS U.S.A.

FEET LEFT

12

FEET LEFT

13

2200

2300

2400

2500

2600

TEMPERATURE LOG (°F)

70 71 72 73 74 75 76 77 78 79 80