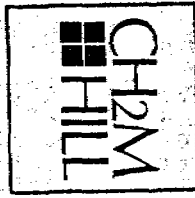


1



CLIENT Miami-Dade Water & Sewer Authority Date 4/21-22/80  
 Well No. I-1 Project No. BC55900.92

Location: State Florida County Dade  
SW  $\frac{1}{4}$  SW  $\frac{1}{4}$  NE  $\frac{1}{4}$  Sec. 21 T. 56 N  $\frac{1}{2}$  S  $\frac{1}{2}$  R. 40 E  $\frac{1}{2}$  W

Logged by R. Sproul Observer D. Snyder

Owner: Miami-Dade Water & Sewer Authority  
 Well: I-1 Disposal, Pilot hole to 2640'  
 Driller: Alsay-Pippin Corp. Date Drilled: 4/80  
 Surface Elevation: 10 ft.  Estimated  Measured Above MSL  
 T.D. Logged 2644' T.D. Driller 2640'  
 Hole Dia. 12.5" From 1800' To 2640' Dia. \_\_\_\_\_ From \_\_\_\_\_ To \_\_\_\_\_  
 Casing I. D. 33" From 0 To 1800' Dia. \_\_\_\_\_ From \_\_\_\_\_ To \_\_\_\_\_  
 Finish:  Open hole  Screen  Gravel  Other  
 Water Level: \_\_\_\_\_ ft.  Above  Below MP. \_\_\_\_\_  Above  Below Land Surface  
 Yield: Flow \_\_\_\_\_ gpm Pump \_\_\_\_\_ gpm  
 Drawdown: \_\_\_\_\_ ft. after \_\_\_\_\_ hours pumping @ \_\_\_\_\_ gpm  
 Use:  Dom.  Stock  PS  Ind.  Irr.  Test  
 Heating or cooling  Drainage  Disposal  Obs.

Water Quality:  
 Temp. \_\_\_\_\_ °F; Sp. Cond. \_\_\_\_\_; Iron \_\_\_\_\_ ppm  
 Cl<sup>-</sup> \_\_\_\_\_ ppm; SO<sub>4</sub><sup>-2</sup> \_\_\_\_\_ ppm; Total Hardness \_\_\_\_\_ ppm  
 Color \_\_\_\_\_ Odor \_\_\_\_\_ Taste \_\_\_\_\_

Remarks: Cuttings settled in bottom of hole  
Depths measured from drilling pad

- Electric
- Gamma Ray
- Temperature
- Caliper
- Fluid Resistivity
- Fluid Velocity

693.587

Log Scales

Electric Log SP <u>50</u> millivolts/inch Res. <u>10</u> ohm-meters/inch Res. _____ ohms/inch	Fluid Resistivity _____ ohm-meters/inch @ _____ °F
Gamma Ray Log _____ Counts/sec/in. Time Constant <u>4</u> sec. Logging speed <u>25</u> FPM	Fluid Velocity _____ Counts/min/inch _____ FPM (continuous) O = _____ gpm
Temperature <u>3°</u> /inch _____ °F to _____ °F Logging speed <u>40</u> FPM	Caliper _____ inches to _____ inches Logging speed <u>50</u> FPM
Water Samples Depths sampled: _____	



CH2M HILL  
 Water Resources Division  
 P.O. Box 1647  
 Gainesville, Florida 32602  
 (904) 377-2442

GEOPHYSICAL WELL SURVEY

FE 1029

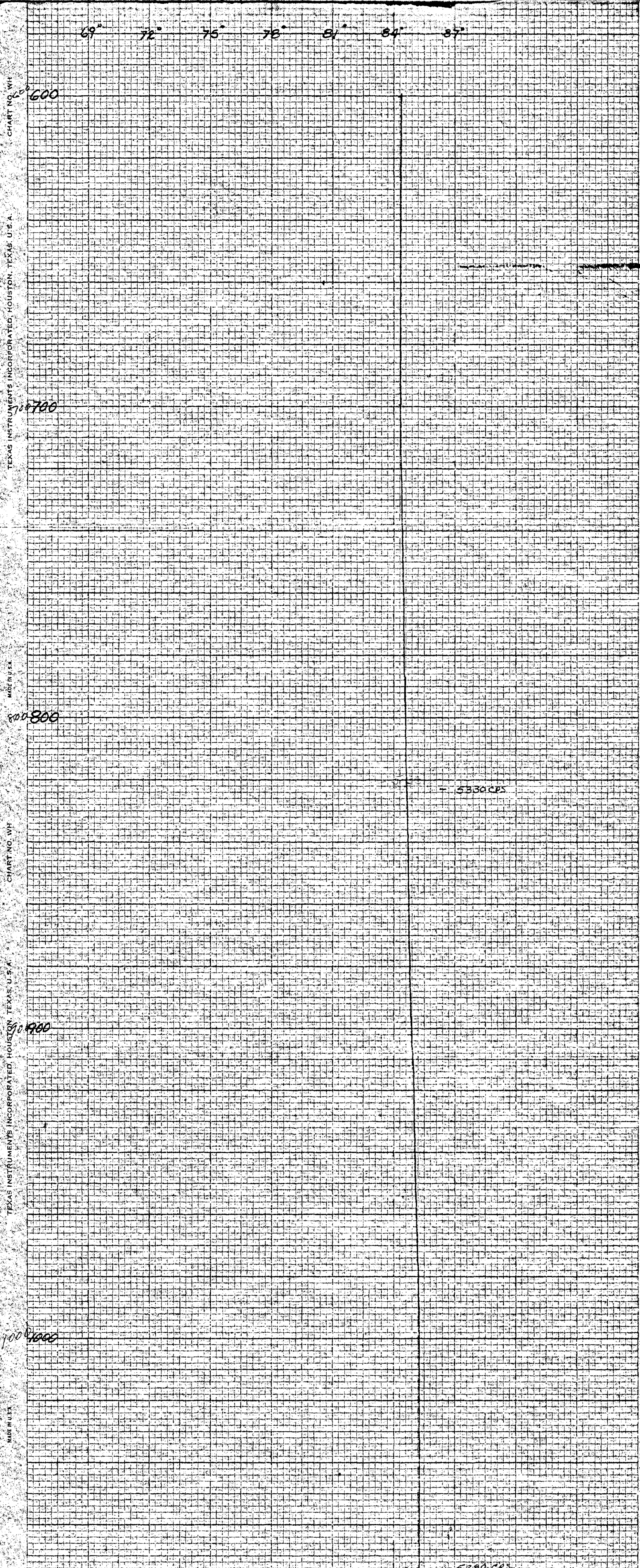


CHART NO. WH

TEXAS INSTRUMENTS INCORPORATED HOUSTON, TEXAS, U.S.A.

MADE IN U.S.A.

CHART NO. WH

TEXAS INSTRUMENTS INCORPORATED HOUSTON, TEXAS, U.S.A.

MADE IN U.S.A.

06

08

07

02

5330 CPS

CHART NO. WH  
TEXAS INSTRUMENTS INCORPORATED, HOUSTON, TEXAS, U.S.A.  
MADE IN U.S.A.  
CHART NO. WH  
TEXAS INSTRUMENTS INCORPORATED, HOUSTON, TEXAS, U.S.A.  
MADE IN U.S.A.  
CHART NO. WH  
TEXAS INSTRUMENTS INCORPORATED, HOUSTON, TEXAS, U.S.A.  
MADE IN U.S.A.  
CHART NO. WH  
TEXAS INSTRUMENTS INCORPORATED, HOUSTON, TEXAS, U.S.A.  
MADE IN U.S.A.

(12)

1100

1200

1300

1400

1500

1600

1700

5232 CAS

08  
09  
10  
11  
12

CHART NO. WH

TEXAS INSTRUMENTS INCORPORATED, HOUSTON, TEXAS, U.S.A.

MADE IN U.S.A.

CHART NO. WH

TEXAS INSTRUMENTS INCORPORATED, HOUSTON, TEXAS, U.S.A.

MADE IN U.S.A.

1200

1900

2000

2100

2200

4739 CPS

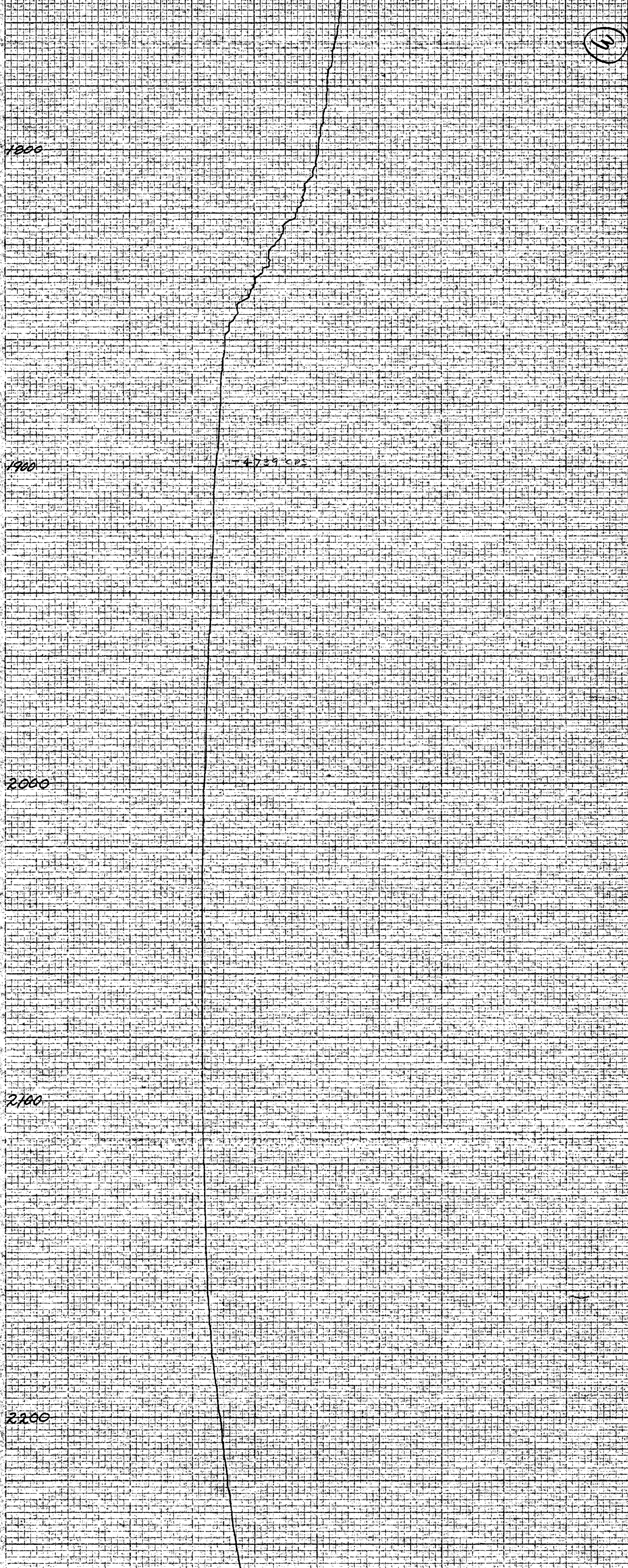
(W)

F1

82

F1

82



4

CHART NO. WH TEXAS INSTRUMENTS INCORPORATED HOUSTON, TEXAS U.S.A. MADE IN U.S.A.

2300

2400

2500

2600

2650

69° 72° 75° 78° 81° 84° 87°

5029.075

5021.091

