



Sheet 3 of 5
691078



CLIENT Miami-Dade Water & Sewer Auth. Date 8/19/79
Well No. BZ-1 Project No. BC55900 92
Location: State Florida County Dade
 SE x NE x NE ysec 21 T. 56 S R. 40 E
Logged by: J. Lehnen Observer R. Sproull
Owner: Miami-Dade Water & Sewer Authority
Well: BZ-1
Driller: Alsay-Pippin Corp. Date Drilled: 1979
Surface Elevation: 10 ft Estimated Above MSL
T.D. Logged: 2753' Measured T.D. Driller 2758'
Hole Dia.: 18" From 975' to 2750' Dia. 6" From 2750' to 2758'
Casing I. D.: 20" From 0' to 975' Dia. From To
Finish: Open hole Screen Gravel Other
Water Level: ft. Above MP Below Land Surface
Yield: Flow 2800 gpm Pump gpm
Drawdown: ft. after hours pumping @ gpm
Use: Dom. Stock PS Ind. Irr. Test
 Heating or cooling Drainage Disposal Obs.
Water Quality:
 Temp. °F. Sp. Cond. ppm. Iron ppm.
 Cl. ppm. SO₄ ppm. Total Hardness ppm.
 Color Olor Taste

Log Scales
 Electric Caliper
 Gamma Ray Fluid Resistivity
 Temperature Fluid Velocity
Electric Log
 SP 200 millivolts/ft. Fluid Resistivity ohm-meters/ft.
 Res. 4 ohms/ft. @ °F.
Gamma Ray Log
 Gamma Ray Log Fluid Velocity
 10 Counts/sec/in. 40 Counts/min/ft (stationary)
 Time Constant 4 sec. 50 FPM (continuous)
 Logging speed 30+ FPM Q = gpm
Temperature
 1 °F/ft. Calliper
 Logging speed 40+ FPM 6 inches to 32 inches
 Logging speed 25+ FPM
Water Samples
 Depths sampled: 1400', 1600', 2200'



CH2M HILL
 Water Resources Division
 P.O. Box 1647
 Gainesville, Florida 32602
 (904) 377-2442

GEOPHYSICAL WELL SURVEY

MADE IN U.S.A.

CHART NO. WH

TEXAS INSTRUMENTS INCORPORATED, HOUSTON, TEXAS, U.S.A.

MADE IN U.S.A.

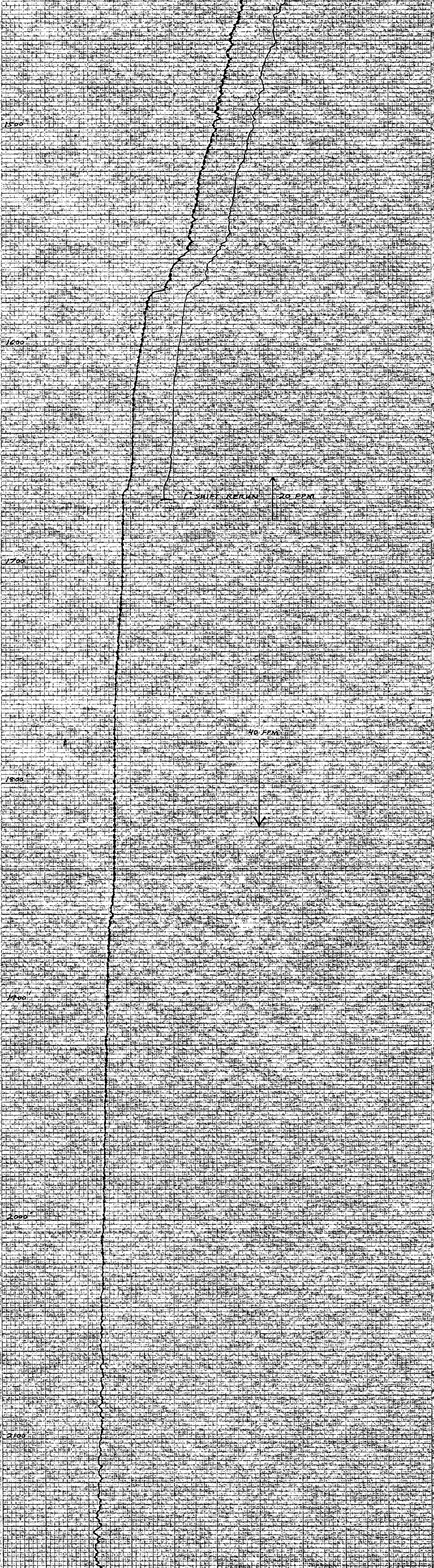
CHART NO. WH

TEXAS INSTRUMENTS INCORPORATED, HOUSTON, TEXAS, U.S.A.

MADE IN U.S.A.

CHART NO. WH

TEXAS INSTRUMENTS INCORPORATED, HOUSTON, TEXAS, U.S.A.

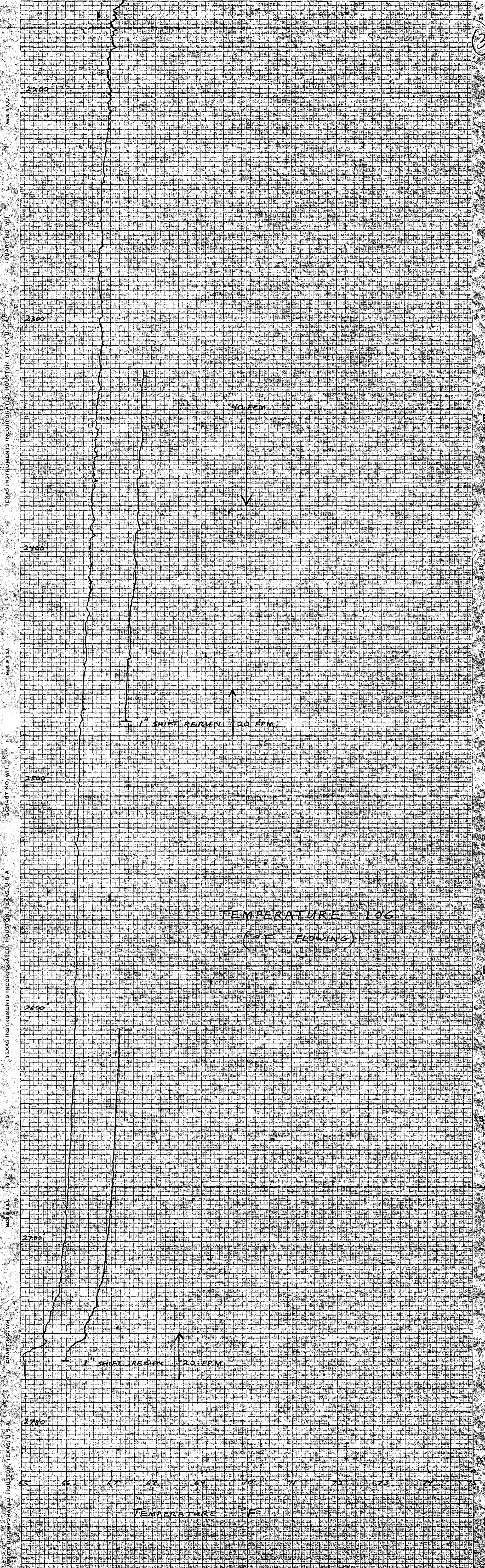


2

91

94

97



TEMPERATURE LOG
(° F FLOWING)

TEMPERATURE ° F

3

66

66

66

MADE IN U.S.A. CHART NO. WH. TEXAS INSTRUMENTS INCORPORATED, HOUSTON, TEXAS, U.S.A. MADE IN U.S.A. CHART NO. WH. TEXAS INSTRUMENTS INCORPORATED, HOUSTON, TEXAS, U.S.A. MADE IN U.S.A. CHART NO. WH. TEXAS INSTRUMENTS INCORPORATED, HOUSTON, TEXAS, U.S.A. MADE IN U.S.A. CHART NO. WH. TEXAS INSTRUMENTS INCORPORATED, HOUSTON, TEXAS, U.S.A.