

870493



FLUID RESISTIVITY TEMPERATURE LOG

COMPANY NORTH DADE M.M.T.P.
 WELL IM #4N
 FIELD NORTH DADE
 COUNTY DADE STATE FLORIDA
 LOCATION _____

PERMANENT DATUM PAD LEVEL ELEV. _____ FT. ABOVE PERMANENT DATUM
 LOG MEASURED FROM PAD _____
 DRILLING MEASURED FROM PAD _____

DATE 03-MARCH-1997
 RUN NO. THIRTEEN
 TYPE LOG FRT
 DEPTH-DRILLER 3301'
 DEPTH-LOGGER 3305' TO CASING
 LOGGED INTERVAL _____ TO _____
 OPERATING RIG TIME 1.5 HOURS
 TYPE FLUID IN HOLE WATER
 SALINITY, PPM CL NA
 DENSITY-VISCOSITY NA
 LEVEL FULL
 MAX. REC. TEMP, DEG F. 50 DEGF
 EQUIPMENT-LOCATION LEE/CALLAHAN
 RECORDED BY LEE/CALLAHAN
 WITNESSED BY C. CAUSARA S. Y. KAZI

OTHER SERVICES:
 X-Y CALIPER
 CBL/VOL
 BHC SONIC/VOL
 DIL/LL3/SP/GR

BOREHOLE RECORD	CASING RECORD	TO	TO
RUN NO. BIT FROM TO	SIZE	MGF.	FROM TO
ELEVEN 32 1/2" 2950'	CASING 34"	.5 M.T.	2140' SURFACE
TWELVE 22 1/2" 3301'	CASING 24"	.5 M.T.	2940' SURFACE
13 22 1/2" 3301'	CASING		

ALL INTERPRETATIONS ARE OPINIONS BASED ON INFERENCES FROM ELECTRICAL OR OTHER MEASUREMENTS AND WE CANNOT AND DO NOT GUARANTEE THE ACCURACY OR CORRECTNESS OF ANY INTERPRETATION, AND WE SHALL NOT, EXCEPT IN THE CASE OF GROSS OR WILLFULL NEGLIGENCE ON OUR PART, BE LIABLE OR RESPONSIBLE FOR ANY LOSS, COSTS, DAMAGES, OR EXPENSES INCURRED OR SUSTAINED BY ANYONE RESULTING FROM ANY INTERPRETATION MADE BY ANY OF OUR OFFICERS, AGENTS OR EMPLOYEES. THESE INTERPRETATIONS ARE ALSO SUBJECT TO OUR GENERAL TERMS AND CONDITIONS SET OUT IN OUR CURRENT PRICE SCHEDULE.

REMARKS

FLUID RESISTIVITY/TEMPERATURE TOOL STRING CONFIGURATION

-- TOTAL TOOL STRING LENGTH = 7.5 FT. --

-- 1 11/16" WEIGHT -- 5 FT. LONG

-- FLUID RESISTIVITY/TEMPERATURE 2.6 FT. LONG

--MEASURE POINT (BOT)

REMARKS

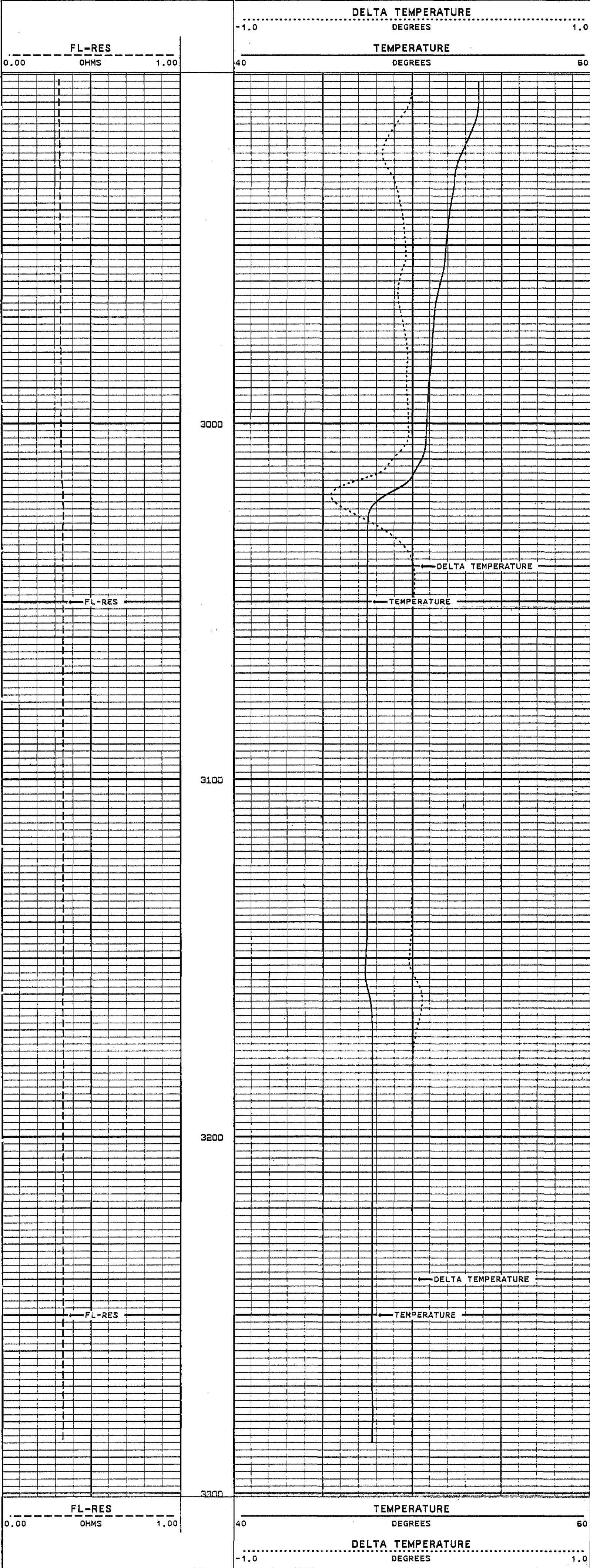
LOGGED GOING DOWN

VERSION: 2.26

MAIN PASS

IW413FRM

FINISH DEPTH: 2906.6 FEET DIRECTION: UP DATE: 03/04/97 TIME: 08:18:05 MODE: TRACE PLAYBACK



START DEPTH: 3301.0 FEET DIRECTION: UP DATE: 03/04/97 TIME: 08:16:35 MODE: TRACE PLAYBACK

IW413FRM

MAIN PASS

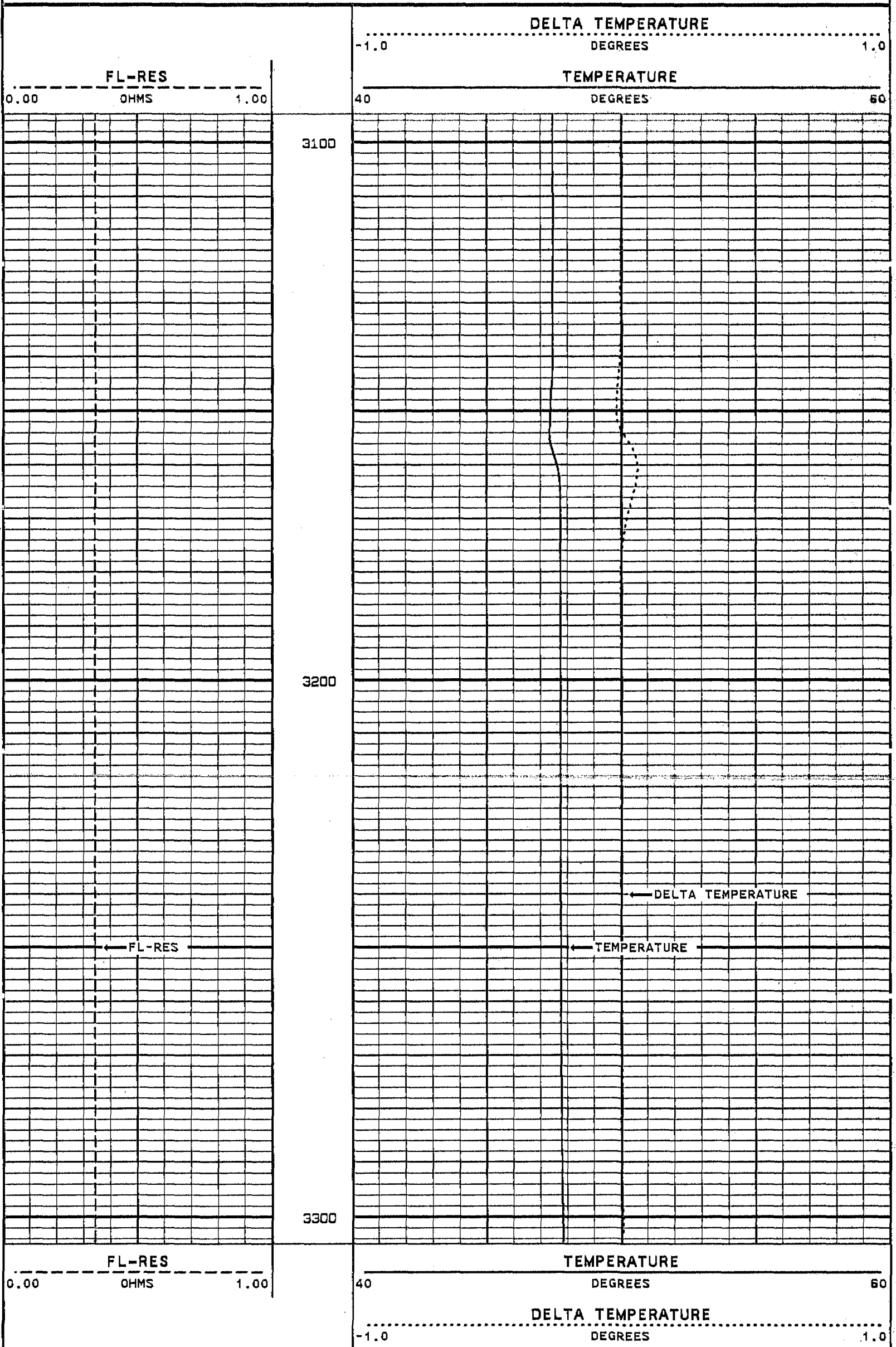
VERSION: 2.26

9

REPEAT SECTION

IW413FRTRP

FINISH DEPTH: 3099.9 FEET DIRECTION: UP DATE: 03/04/97 TIME: 08:14:28 MODE: TRACE PLAYBACK



START DEPTH: 3305.0 FEET DIRECTION: UP DATE: 03/04/97 TIME: 08:13:33 MODE: TRACE PLAYBACK

IW413FRTRP

REPEAT SECTION

MASTER CALIBRATION SUMMARY

FILE: DATE: 03/04/97 TIME: 08:09 VERSION: 2.26

TEMPERATURE #31

DATE: 01/05/97 TIME: 12:00

	MEASURED	UNITS	STANDARD	MINIMUM	MAXIMUM	DEVIATION	UNITS
ZERO	283.1	CPS	69.6	69.5	69.6	0.04	DEGF
PLUS	386.8	CPS	91.0	91.0	91.0	0.00	DEGF

FL-RES TOOL #31

DATE: 01/05/97 TIME: 12:00

	MEASURED	UNITS	STANDARD	MINIMUM	MAXIMUM	DEVIATION	UNITS
SONDEX 50000	8770.0	CPS	0.20	0.20	0.20	0.000	CPS
SONDEX 25000	4540.0	CPS	0.40	0.40	0.40	0.000	CPS
SONDEX 10000	2380.0	CPS	0.80	0.80	0.80	0.000	CPS
SONDEX 500	89.0	CPS	20.00	20.00	20.00	0.000	CPS

COMPANY NORTH DADE W.W.T.P.
 WELL IW #4N
 FIELD NORTH DADE STATE FLORIDA

