

870482



FLUID RESISTIVITY TEMPERATURE LOG

COMPANY NORTH DADE W.M.T.P.
 WELL IM #1N
 FIELD NORTH DADE
 COUNTY DADE STATE FLORIDA
 LOCATION
 OTHER SERVICES:
 X-Y CALIPER
 BHC/VDL/GR
 DIL/LL3/SP
 DHTV

PERMANENT DATUM PAD LEVEL ELEV. K.B.
 LOG MEASURED FROM PAD FT. ABOVE PERMANENT DATUM ELEV. D.F.
 DRILLING MEASURED FROM PAD G.L.

DATE 02-MAY-1987
 RUN NO. FOUR
 TYPE LOG FRT
 DEPTH-DRILLER 2162'
 DEPTH-LOGGER 2162'
 LOGGED INTERVAL 2162' TO 1550'
 OPERATING RIG TIME 1.5 HOURS
 TYPE FLUID IN HOLE WATER
 SALINITY, PPM CL NA
 DENSITY-VISCOSITY NA
 LEVEL FULL
 MAX. REC. TEMP, DEG F. NA DEGF
 EQUIPMENT-LOCATION 102 FTM
 RECORDED BY LEE
 WITNESSED BY C. CAUSASAS MILLER/CALLAHAN
 Y. KAZI

RUN NO.	BOREHOLE RECORD		CASING RECORD				
	BIT	FROM	TO	SIZE	WGT.	FROM	TO
ONE	60"	361'	SURFACE	54"	.5 M.T.	361'	SURFACE
TWO	12 1/4"	1550'	CASING	44"	.5 M.T.	1530'	SURFACE
THREE	52 1/2"	1550'	CASING				
FOUR	12 1/4"	2162'	CASING				

ALL INTERPRETATIONS ARE OPINIONS BASED ON INFERENCES FROM ELECTRICAL OR OTHER MEASUREMENTS AND WE CANNOT AND DO NOT GUARANTEE THE ACCURACY OR CORRECTNESS OF ANY INTERPRETATION, AND WE SHALL NOT, EXCEPT IN THE CASE OF GROSS OR WILLFULL NEGLIGENCE ON OUR PART, BE LIABLE OR RESPONSIBLE FOR ANY LOSS, COSTS, DAMAGES, OR EXPENSES INCURRED OR SUSTAINED BY ANYONE RESULTING FROM ANY INTERPRETATION MADE BY ANY OF OUR OFFICERS, AGENTS OR EMPLOYEES. THESE INTERPRETATIONS ARE ALSO SUBJECT TO OUR GENERAL TERMS AND CONDITIONS SET OUT IN OUR CURRENT PRICE SCHEDULE.

REMARKS

FLUID RESISTIVITY/TEMPERATURE TOOL STRING CONFIGURATION

-- TOTAL TOOL STRING LENGTH = 7.5 FT. --

-- 1 11/16" WEIGHT -- 5 FT. LONG

-- FLUID RESISTIVITY/TEMPERATURE 2.5 FT. LONG

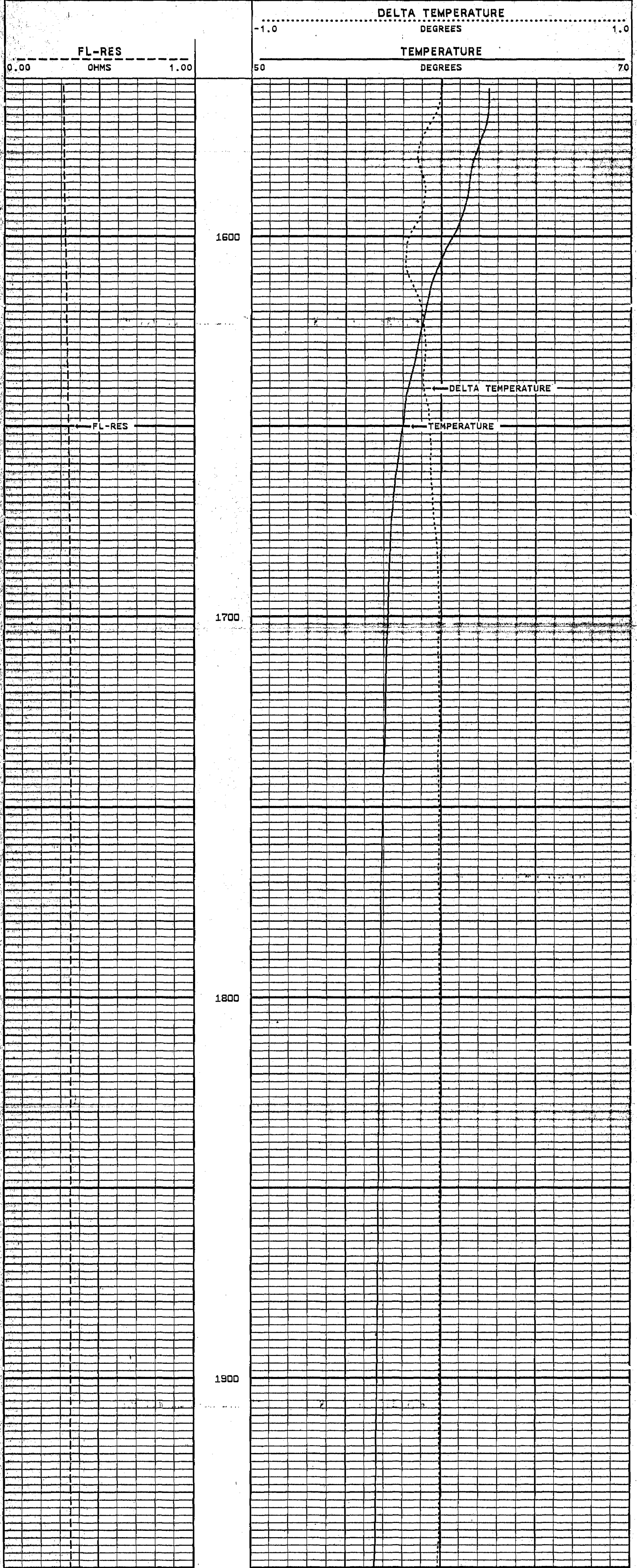
---MEASUREMENT POINT (NOT)

VERSION: 2.42

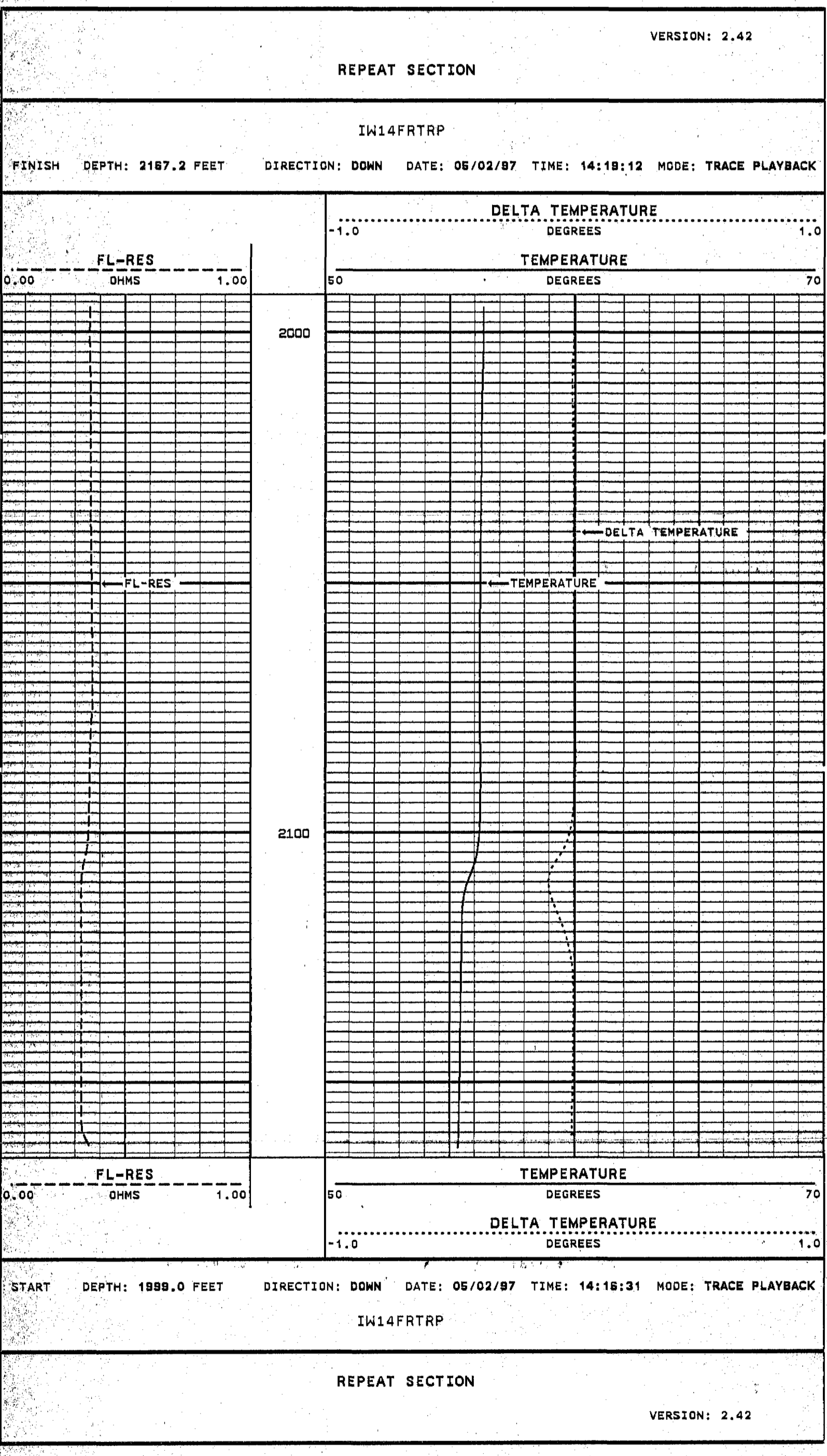
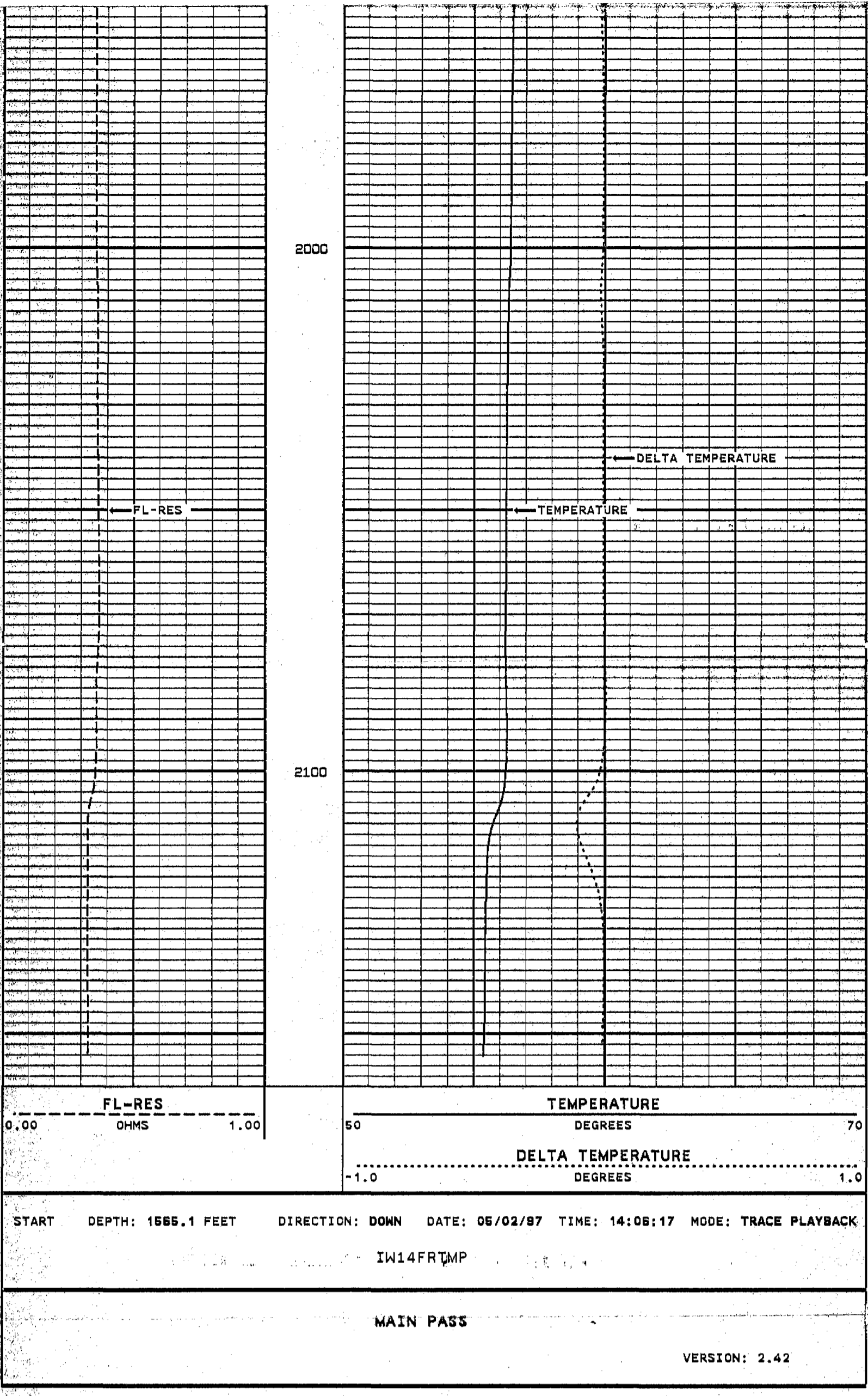
MAIN PASS

IW14FRTMP

FINISH DEPTH: 2158.3 FEET DIRECTION: DOWN DATE: 05/02/87 TIME: 14:14:40 MODE: TRACE PLAYBACK



2



MASTER CALIBRATION SUMMARY

FILE: DATE: 05/02/97 TIME: 16:08 VERSION: 2.42

TEMPERATURE #31

DATE: 01/05/97 TIME: 12:00

	MEASURED	UNITS	STANDARD	MINIMUM	MAXIMUM	DEVIATION	UNITS
ZERO	283.1	CPS	69.6	69.5	69.6	0.04	DEGF
PLUS	386.8	CPS	91.0	91.0	91.0	0.00	DEGF

FL-RES TOOL #31

DATE: 01/05/97 TIME: 12:00

	MEASURED	UNITS	STANDARD	MINIMUM	MAXIMUM	DEVIATION	UNITS
SONDEX 50000 MMHDS	8770.0	CPS	0.20	0.20	0.20	0.000	CPS
SONDEX 25000 MMHDS	4540.0	CPS	0.40	0.40	0.40	0.000	CPS
SONDEX 10000 MMHDS	2380.0	CPS	0.80	0.80	0.80	0.000	CPS
SONDEX 500 MMHDS	89.0	CPS	20.00	20.00	20.00	0.000	CPS

COMPANY NORTH DADE W.W.T.P.

WELL IW #1N

FIELD NORTH DADE STATE FLORIDA

