

870556



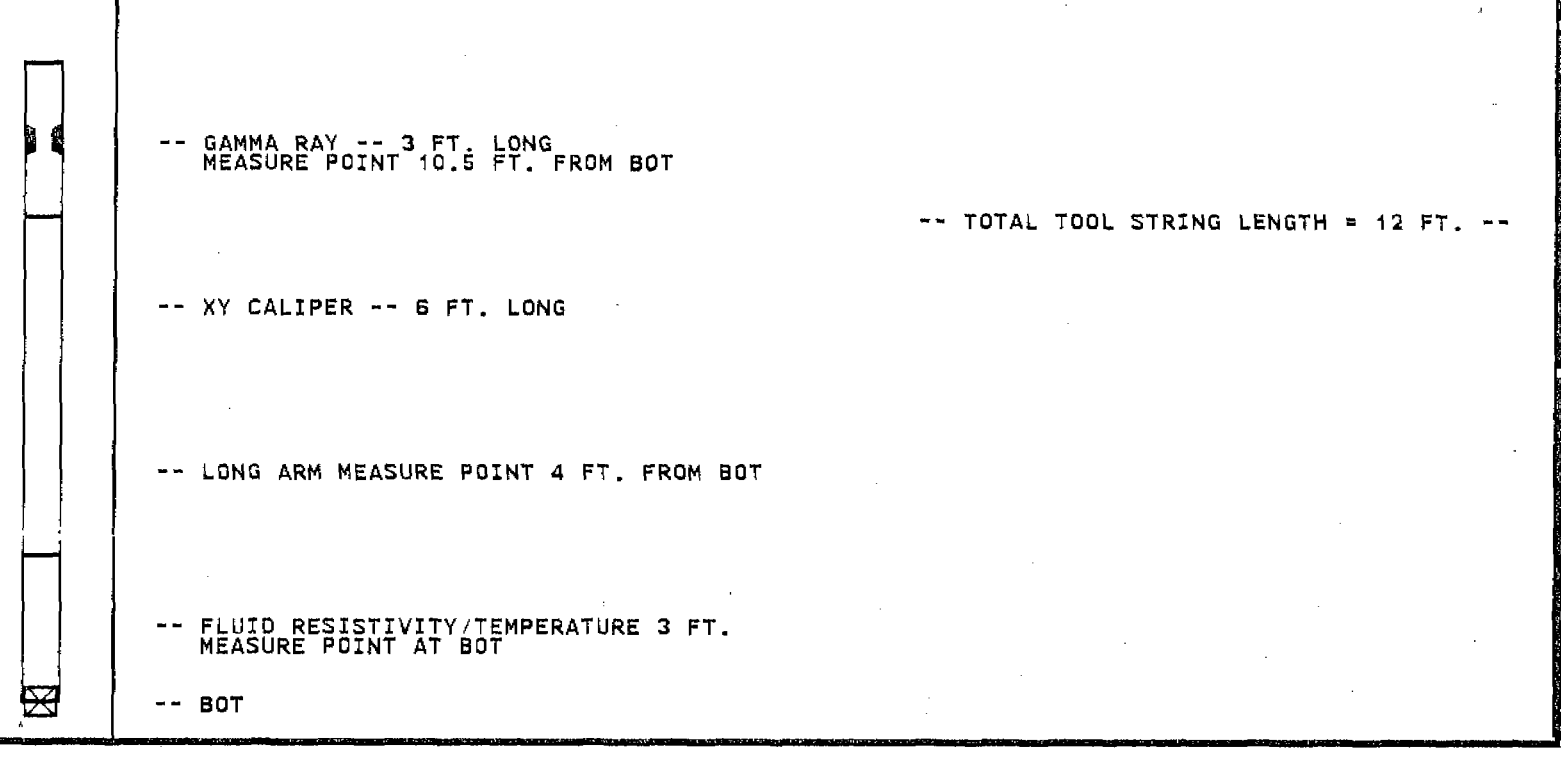
FLUID RESISTIVITY TEMPERATURE

COMPANY MIAMI-DADE WATER & SEWER
 WELL FA-4N
 FIELD MIAMI-DADE
 COUNTY DADE
 LOCATION NORTH DISTRICT WMP
 STATE FLORIDA
 OTHER SERVICES: XYCALGR, BHC, DIL, FLOWMETER
 PERMANENT DATUM PAD ELEV. K.B., D.F., G.L.
 LOG MEASURED FROM PAD FT. ABOVE PERMANENT DATUM
 DRILLING MEASURED FROM PAD
 DATE 19-JUNE-95
 RUN NO. THREE
 TYPE LOG FRT
 DEPTH-DRILLER 1465
 DEPTH-LOGGER 1467 TO 1100
 LOGGED INTERVAL 1.5 HOURS
 OPERATING RIG TIME WATER
 TYPE FLUID IN HOLE NA
 SALINITY, PPM CL NA
 DENSITY-VISCOSITY FULL
 MAX. REC. TEMP. DEG F. 83 DEGF
 EQUIPMENT-LOCATION 102 - MIAMI
 RECORDED BY WILLIAMS/DENTON
 WITNESSED BY C. CAUSARA'S
 BOREHOLE RECORD
 RUN NO. BIT FROM TO SIZE CASTING RECORD FROM TO
 ONE 28" SURFACE 350' 20" 5" 350 SURFACE
 TWO 12.25" 350' 1200' 5" 1160' SURFACE
 THREE 11" 1465' CASING 13" 5" MT. 1160' SURFACE

ALL INTERPRETATIONS ARE OPINIONS BASED ON INFERENCES FROM ELECTRICAL OR OTHER MEASUREMENTS AND WE CANNOT AND DO NOT GUARANTEE THE ACCURACY OR CORRECTNESS OF ANY INTERPRETATION, AND WE SHALL NOT, EXCEPT IN THE CASE OF GROSS OR WILLFULL NEGLIGENCE ON OUR PART, BE LIABLE OR RESPONSIBLE FOR ANY LOSS, COSTS, DAMAGES, OR EXPENSES INCURRED OR SUSTAINED BY ANYONE RESULTING FROM ANY INTERPRETATION MADE BY ANY OF OUR OFFICERS, AGENTS OR EMPLOYEES. THESE INTERPRETATIONS ARE ALSO SUBJECT TO OUR GENERAL TERMS AND CONDITIONS SET OUT IN OUR CURRENT PRICE SCHEDULE.

REMARKS

XY CALIPER/GAMMA RAY/FLUID RESISTIVITY/TEMPERATURE TOOL STRING CONFIGURATION



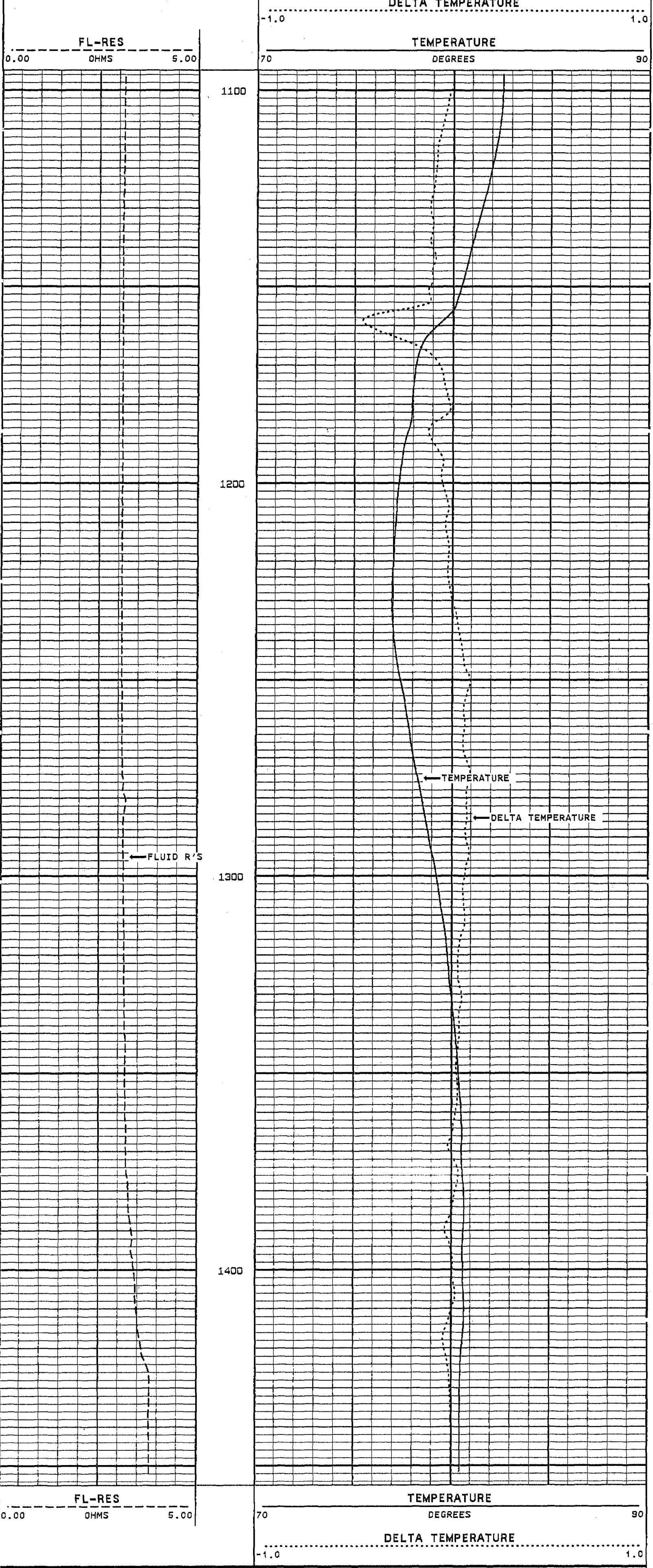
REMARKS

MAIN PASS LOGGED GOING DOWN

VERSION: 2.26

FA4N3FRT1

FINISH DEPTH: 1455.9 FEET DIRECTION: DOWN DATE: 06/19/95 TIME: 08:59:43 MODE: TRACE PLAYBACK



START DEPTH: 1100.1 FEET DIRECTION: DOWN DATE: 06/19/95 TIME: 08:49:33 MODE: TRACE PLAYBACK

FA4N3FRT1

VERSION: 2.26

REMARKS

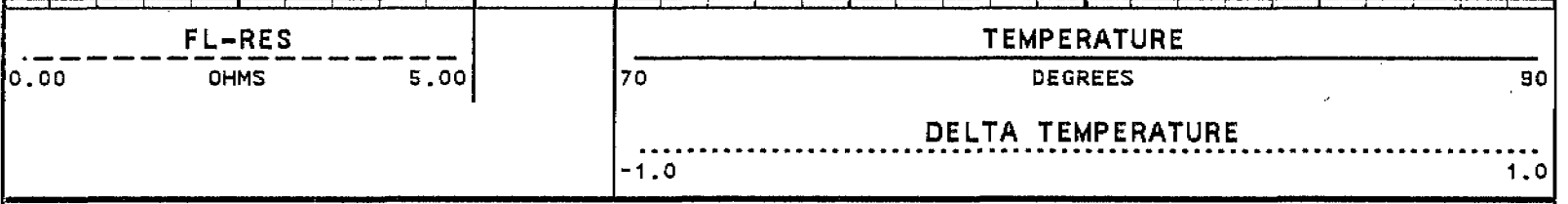
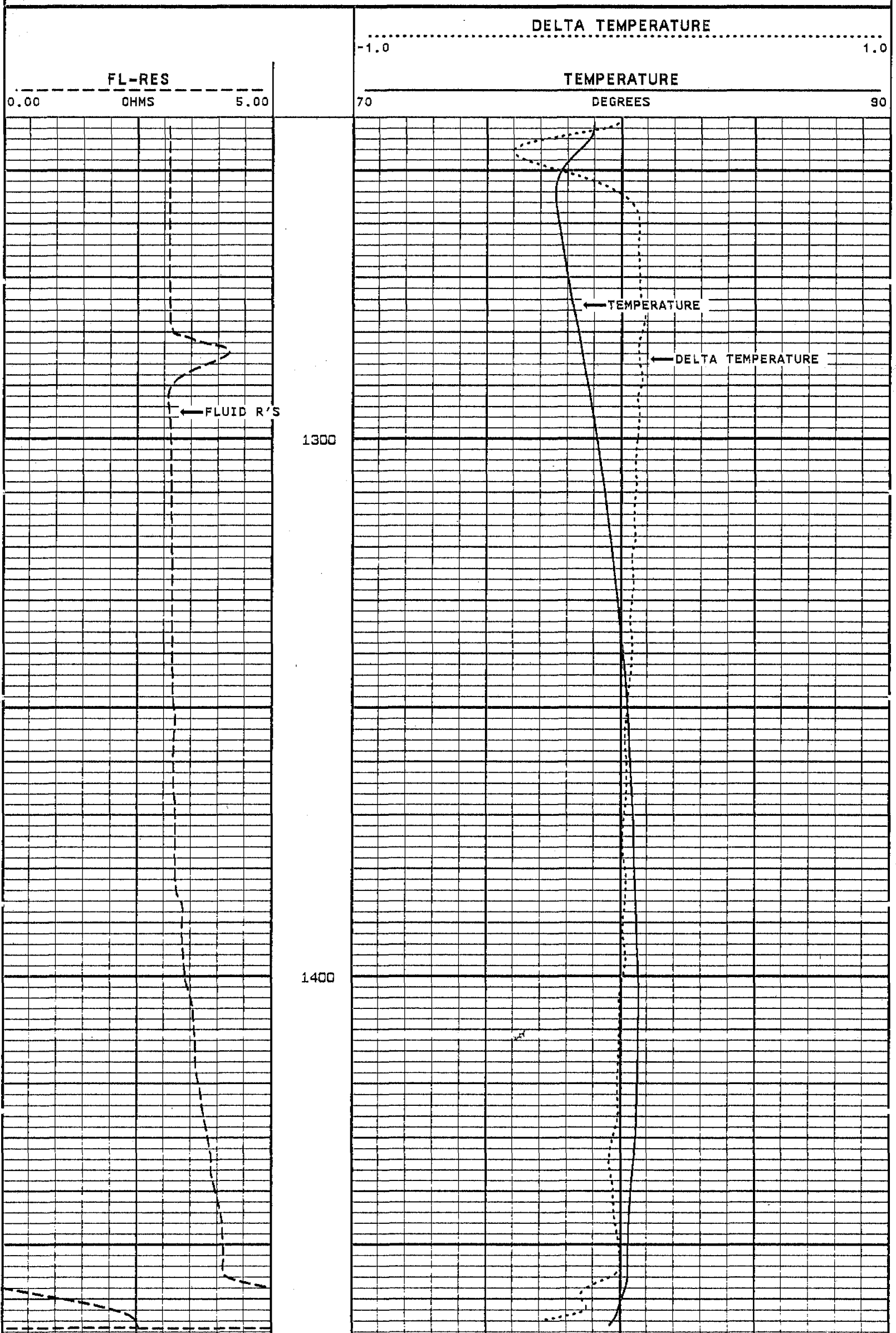
9

REPEAT SECTION
LOGGED GOING DOWN

VERSION: 2.26

FA4N3FRT2

FINISH DEPTH: 1469.2 FEET DIRECTION: DOWN DATE: 06/19/95 TIME: 09:11:15 MODE: TRACE PLAYBACK



START DEPTH: 1245.2 FEET DIRECTION: DOWN DATE: 06/19/95 TIME: 09:04:32 MODE: TRACE PLAYBACK

FA4N3FRT2

VERSION: 2.26

BEFORE SURVEY CALIBRATION SUMMARY

FILE: DATE: 06/19/95 TIME: 13:44 VERSION: 2.26

FL-RES TOOL #31

DATE: 06/10/95 TIME: 08:35

	MEASURED	STANDARD	MINIMUM	MAXIMUM	DEVIATION	UNITS
ZERO	0.20	0.20	0.24	0.24	0.000	OHMS
CAL 2	0.80	0.80	0.35	0.35	0.000	OHMS
CAL 3	4.62	3.20	4.60	4.62	0.005	OHMS
PLUS	13.46	8.30	13.27	13.54	0.122	OHMS
RM #4 Cal 4	20.00	20.00	4.94	4.94	0.000	OHMS

MASTER CALIBRATION SUMMARY

FILE: DATE: 06/19/95 TIME: 13:44 VERSION: 2.26

TEMPERATURE TOOL #31

DATE: 03/10/95 TIME: 15:29

	MEASURED	UNITS	STANDARD	MINIMUM	MAXIMUM	DEVIATION	UNITS
ZERO	283.1	CPS	69.6	69.5	69.6	0.04	DEGF
PLUS	386.8	CPS	91.0	91.0	91.0	0.00	DEGF

COMPANY MIAMI-DADE
NORTH DISTRICT WWTP
WELL FA-4N
FIELD MIAMI-DADE STATE FLORIDA

