

810568



FLUID RESISTIVITY TEMPERATURE

COMPANY MIAMI-DADE WATER & SEWER

WELL FA-4N

FIELD MIAMI-DADE

COUNTY DADE

LOCATION NORTH DISTRICT WMTP

STATE FLORIDA

OTHER SERVICES:

XY-CALIPER

GAMMA-RAY

BHC

DIL

FILE NO. _____

PERMANENT DATUM PAD _____ ELEV. _____

LOG MEASURED FROM PAD _____ FT. ABOVE PERMANENT DATUM

DRILLING MEASURED FROM PAD _____

DATE 9 JUNE 95

RUN NO. TWO

TYPE LOG FRT

DEPTH-DRILLER 1200

DEPTH-LOGGER 1193

LOGGED INTERVAL 1193 TO 350

OPERATING RIG TIME 1.5 HOURS

TYPE FLUID IN HOLE WATER

SALINITY, PPM CL NA

DENSITY-VISCOSITY NA

LEVEL FULL

MAX. REC. TEMP, DEG. F. NA

EQUIPMENT-LOCATION 102 FT. MYERS

RECORDED BY GRISSOM/JONES

WITNESSED BY C. CAUSARA S

BOREHOLE RECORD		CASING RECORD	
RUN NO.	BIT FROM TO	SIZE FROM TO	TO SURFACE
ONE	28" SURFACE 350'	20" 5"	350'
TWO	12.25" 350' 1200'		

ALL INTERPRETATIONS ARE OPINIONS BASED ON INFERENCES FROM ELECTRICAL OR OTHER MEASUREMENTS AND WE CANNOT AND DO NOT GUARANTEE THE ACCURACY OR CORRECTNESS OF ANY INTERPRETATION, AND WE SHALL NOT, EXCEPT IN THE CASE OF GROSS OR WILLFULL NEGLIGENCE ON OUR PART, BE LIABLE OR RESPONSIBLE FOR ANY LOSS, COSTS, DAMAGES, OR EXPENSES INCURRED OR SUSTAINED BY ANYONE RESULTING FROM ANY INTERPRETATION MADE BY ANY OF OUR OFFICERS, AGENTS OR EMPLOYEES. THESE INTERPRETATIONS ARE ALSO SUBJECT TO OUR GENERAL TERMS AND CONDITIONS SET OUT IN OUR CURRENT PRICE SCHEDULE.

REMARKS

FLUID RESISTIVITY/TEMPERATURE TOOL STRING CONFIGURATION

-- 1 3/8" 7 TO 1 ADAPTER -- 1 FT. LONG

-- TOTAL TOOL STRING LENGTH = 9.5 FT. --

-- 1 11/16" WEIGHT -- 5 FT. LONG

-- FLUID RESISTIVITY/TEMPERATURE 3.5 FT. LONG

---MEASURE POINT (BOT):

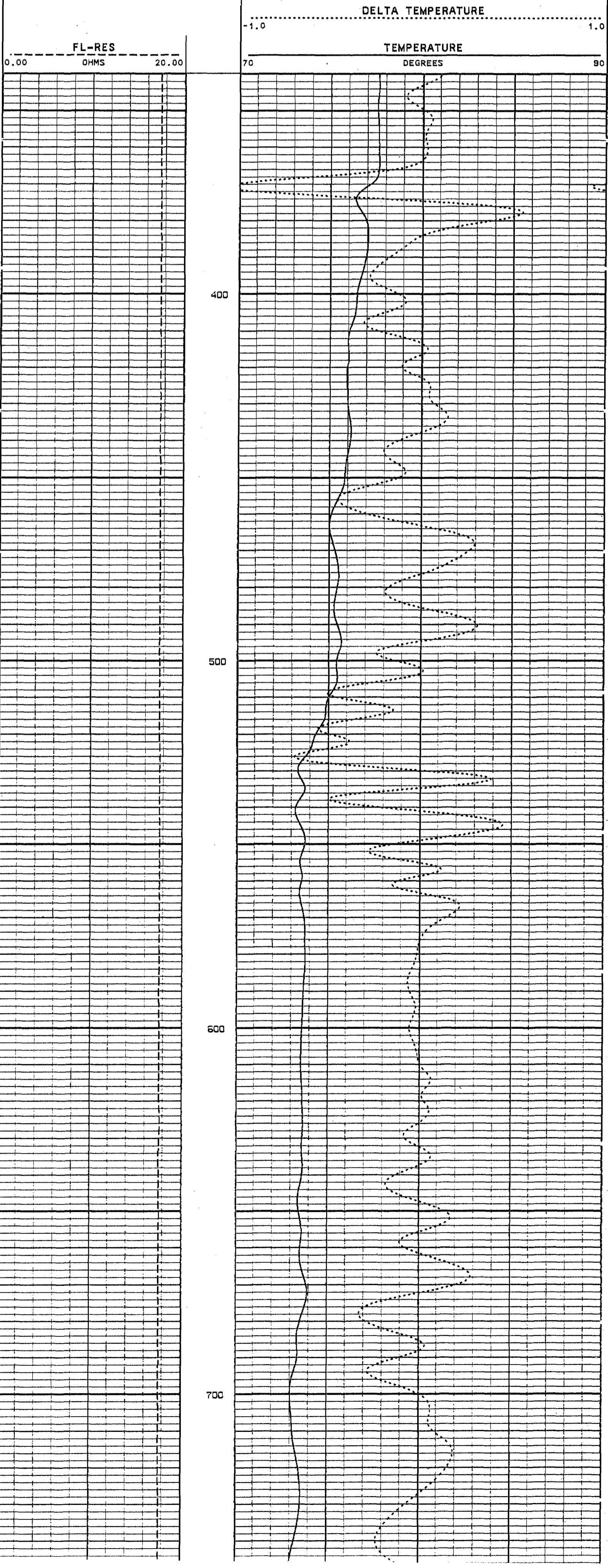
REMARKS

MAIN PASS LOGGED GOING DOWN

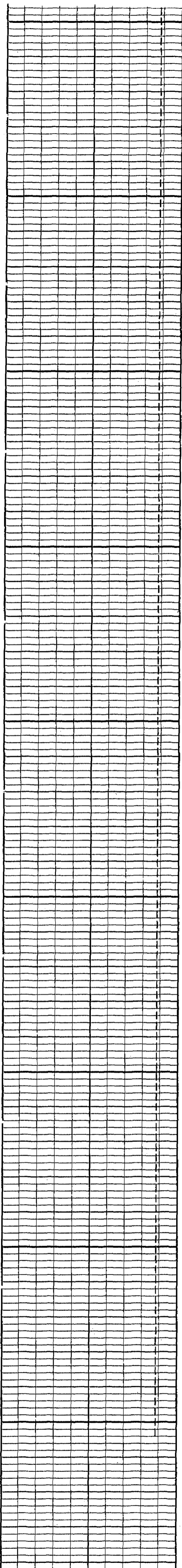
VERSION: 2.26

FA4N2FRT1

FINISH DEPTH: 1157.6 FEET DIRECTION: DOWN DATE: 06/09/95 TIME: 09:53:26 MODE: TRACE PLAYBACK



2

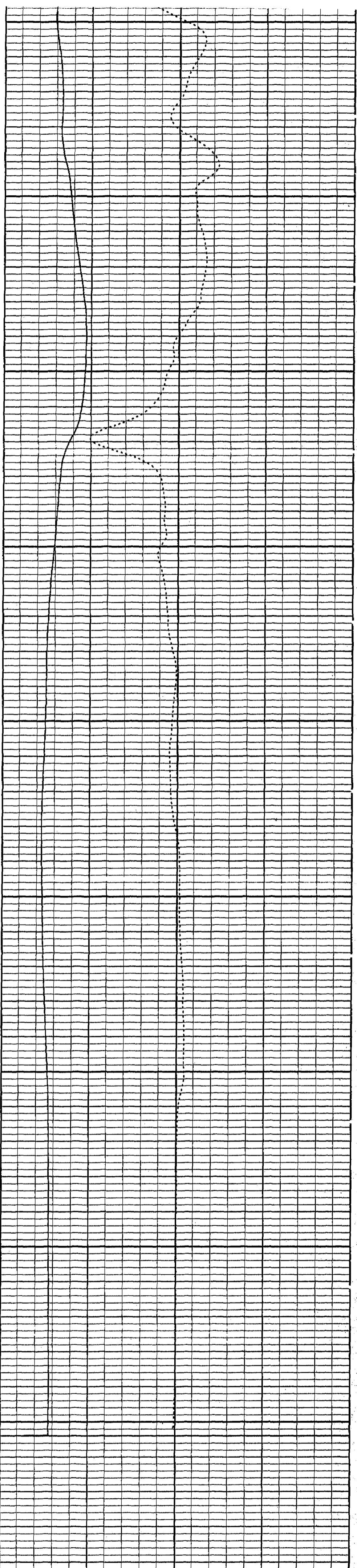


800

900

1000

1100



FL-RES
OHMS 0.00 20.00

TEMPERATURE
DEGREES 70 90

DELTA TEMPERATURE
-1.0 1.0

START DEPTH: 306.2 FEET DIRECTION: DOWN DATE: 06/09/95 TIME: 09:33:04 MODE: TRACE PLAYBACK

FA4N2FRT1

VERSION: 2.26

REMARKS

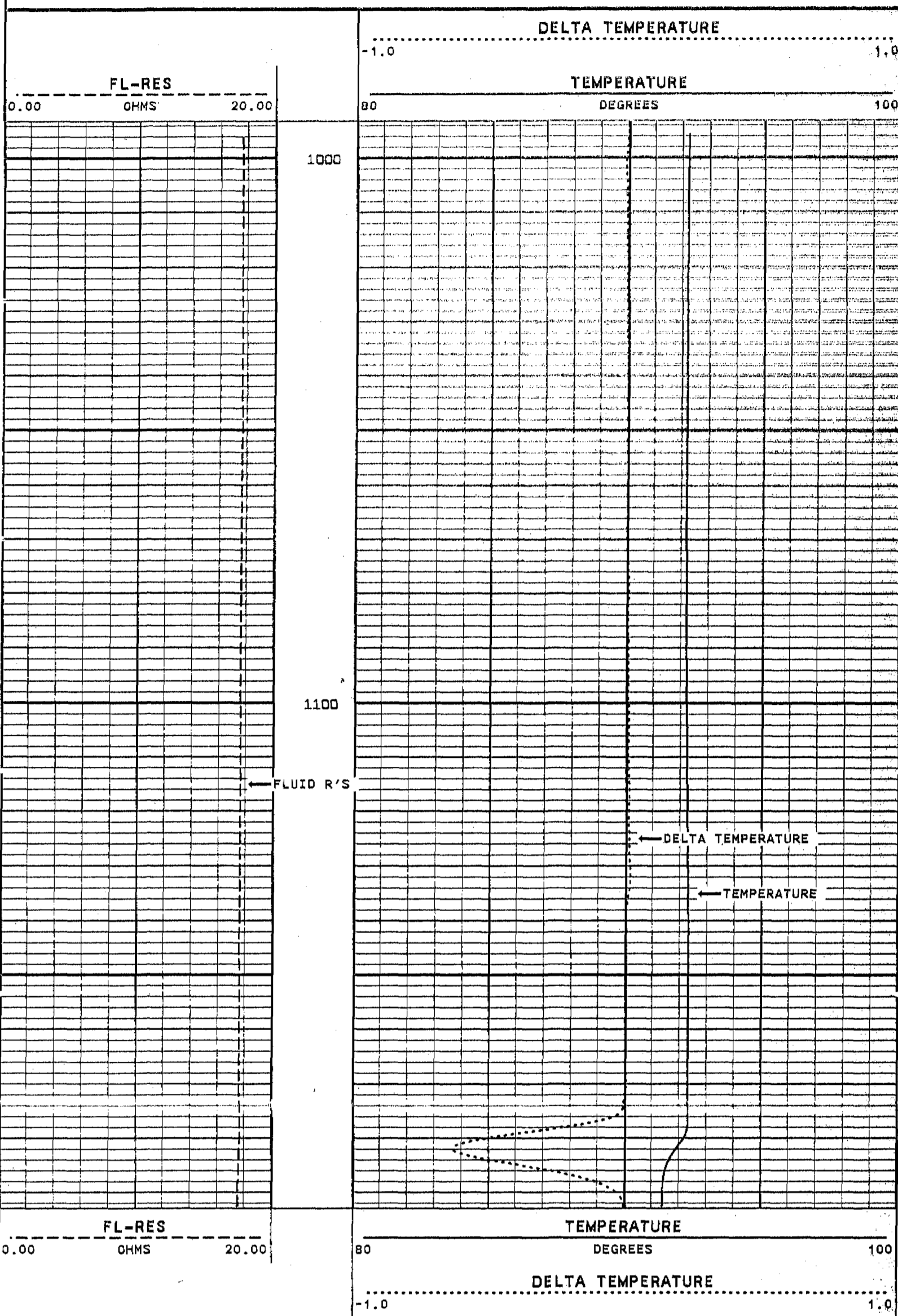
5

REPEAT SECTION
LOGGED GOING DOWN

VERSION: 2.26

FA4N2FRT2

FINISH DEPTH: 1201.3 FEET DIRECTION: DOWN DATE: 06/09/95 TIME: 10:02:00 MODE: TRACE PLAYBACK



START DEPTH: 999.1 FEET DIRECTION: DOWN DATE: 06/09/95 TIME: 09:56:51 MODE: TRACE PLAYBACK
FA4N2FRT2
VERSION: 2.26

MASTER CALIBRATION SUMMARY

FILE: DATE: 06/09/95 TIME: 14:45 VERSION: 2.26

TEMPERATURE TOOL #31

DATE: 03/10/95 TIME: 15:29

	MEASURED	UNITS	STANDARD	MINIMUM	MAXIMUM	DEVIATION	UNITS
ZERO	283.1	CPS	69.6	69.5	69.6	0.04	DEGF
PLUS	386.8	CPS	91.0	91.0	91.0	0.00	DEGF

FL-RES TOOL #31

DATE: 05/04/95 TIME: 15:55

	MEASURED	UNITS	STANDARD	MINIMUM	MAXIMUM	DEVIATION	UNITS
SONDEX 50000	8770.0	CPS	0.20	0.20	0.20	0.000	OHMS
SONDEX 25000	4540.0	CPS	0.40	0.40	0.40	0.000	OHMS
SONDEX 12500	2380.0	CPS	0.80	0.80	0.80	0.000	OHMS
SONDEX 500	89.0	CPS	20.00	20.00	20.00	0.000	OHMS

COMPANY MIAMI-DADE
NORTH DISTRICT WWT
WELL FA-4N
FIELD MIAMI-DADE STATE FLORIDA

