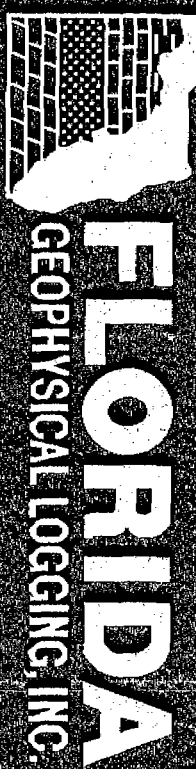


870599



FLUID RESISTIVITY TEMPERATURE LOG

COMPANY MIAMI-DADE WATER & SEWER
 WELL FA-1N
 FIELD MIAMI-DADE
 COUNTY DADE
 LOCATION NORTH DISTRICT WMTD
 STATE FLORIDA
 OTHER SERVICES:
 DIL X-Y CALIPER
 BHC
 BHTV

PERMANENT DATUM PAD _____ ELEV. _____
 LOG MEASURED FROM PAD _____ FT. ABOVE PERMANENT DATUM
 DRILLING MEASURED FROM PAD _____

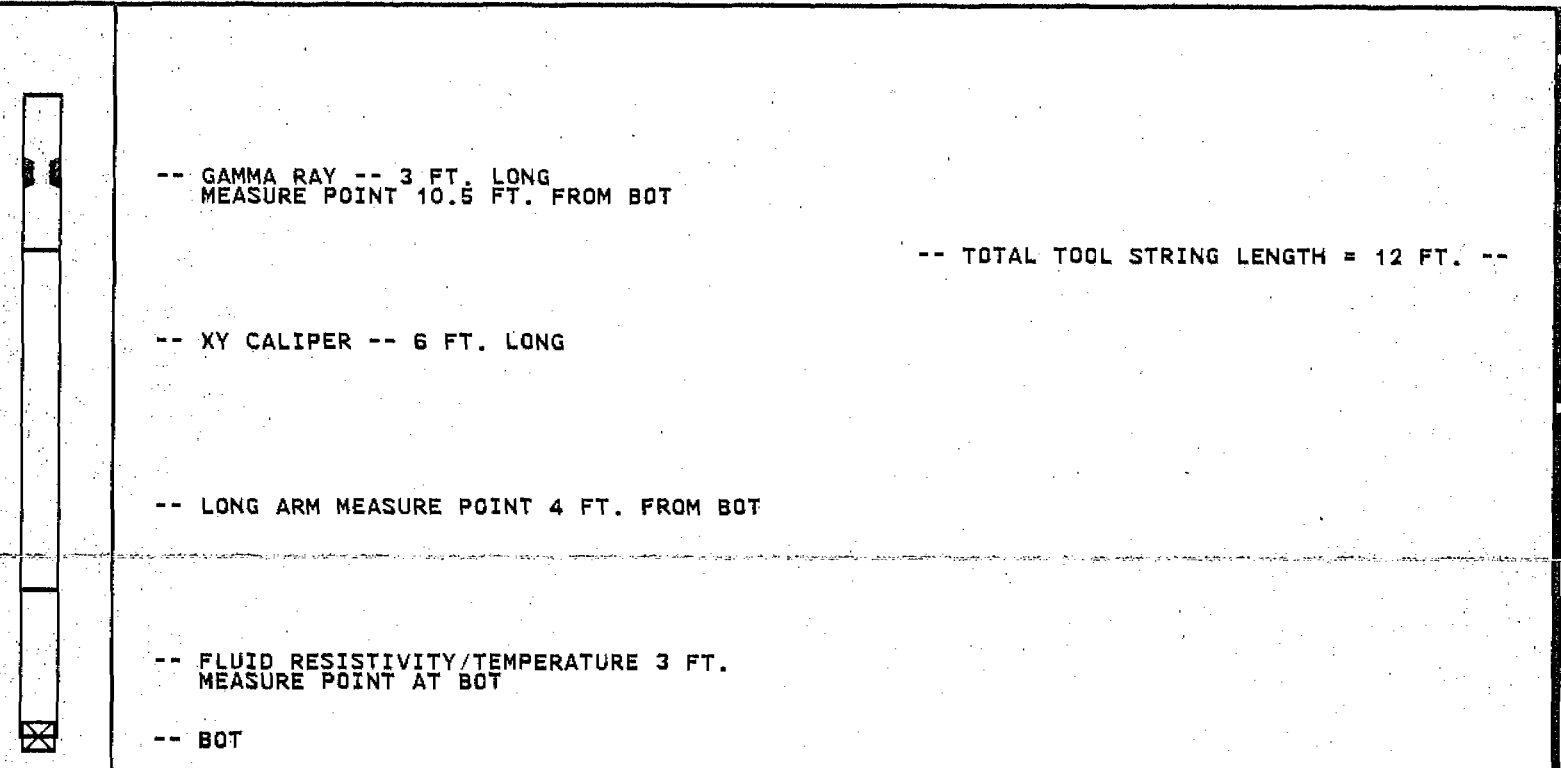
DATE 30-JANUARY-1996
 RUN NO. FOUR
 TYPE LOG FRT
 DEPTH-DRILLER 1802'
 DEPTH-LOGGER 1800'
 LOGGED INTERVAL 1800' TO 1150'
 OPERATING RIG TIME .5 HOURS
 TYPE FLUID IN HOLE WATER
 SALINITY, PPM CL NA
 DENSITY-VISCOSITY NA
 LEVEL FULL
 MAX. REC. TEMP, DEG F. 71 DEGF
 EQUIPMENT-LOCATION 101 - FTM
 RECORDED BY JONES/LEE
 WITNESSED BY CAUSARA'S

BOREHOLE RECORD		CASING RECORD					
RUN NO.	BIT	FROM	TO	SIZE	WGT.	FROM	TO
9.8625"	1500'	1500'	1500'	20"	.5" WT.	350'	SURFACE
8.5"	1802'	1802'	1500'	12.75"	.375 WT.	1160'	SURFACE

ALL INTERPRETATIONS ARE OPINIONS BASED ON INFERENCES FROM ELECTRICAL OR OTHER MEASUREMENTS AND WE CANNOT AND DO NOT GUARANTEE THE ACCURACY OR CORRECTNESS OF ANY INTERPRETATION, AND WE SHALL NOT, EXCEPT IN THE CASE OF GROSS OR WILLFULL NEGLIGENCE ON OUR PART, BE LIABLE OR RESPONSIBLE FOR ANY LOSS, COSTS, DAMAGES, OR EXPENSES INCURRED OR SUSTAINED BY ANYONE RESULTING FROM ANY INTERPRETATION MADE BY ANY OF OUR OFFICERS, AGENTS OR EMPLOYEES. THESE INTERPRETATIONS ARE ALSO SUBJECT TO OUR GENERAL TERMS AND CONDITIONS SET OUT IN OUR CURRENT PRICE SCHEDULE.

REMARKS

XY CALIPER/GAMMA RAY/FLUID RESISTIVITY/TEMPERATURE TOOL STRING CONFIGURATION



REMARKS

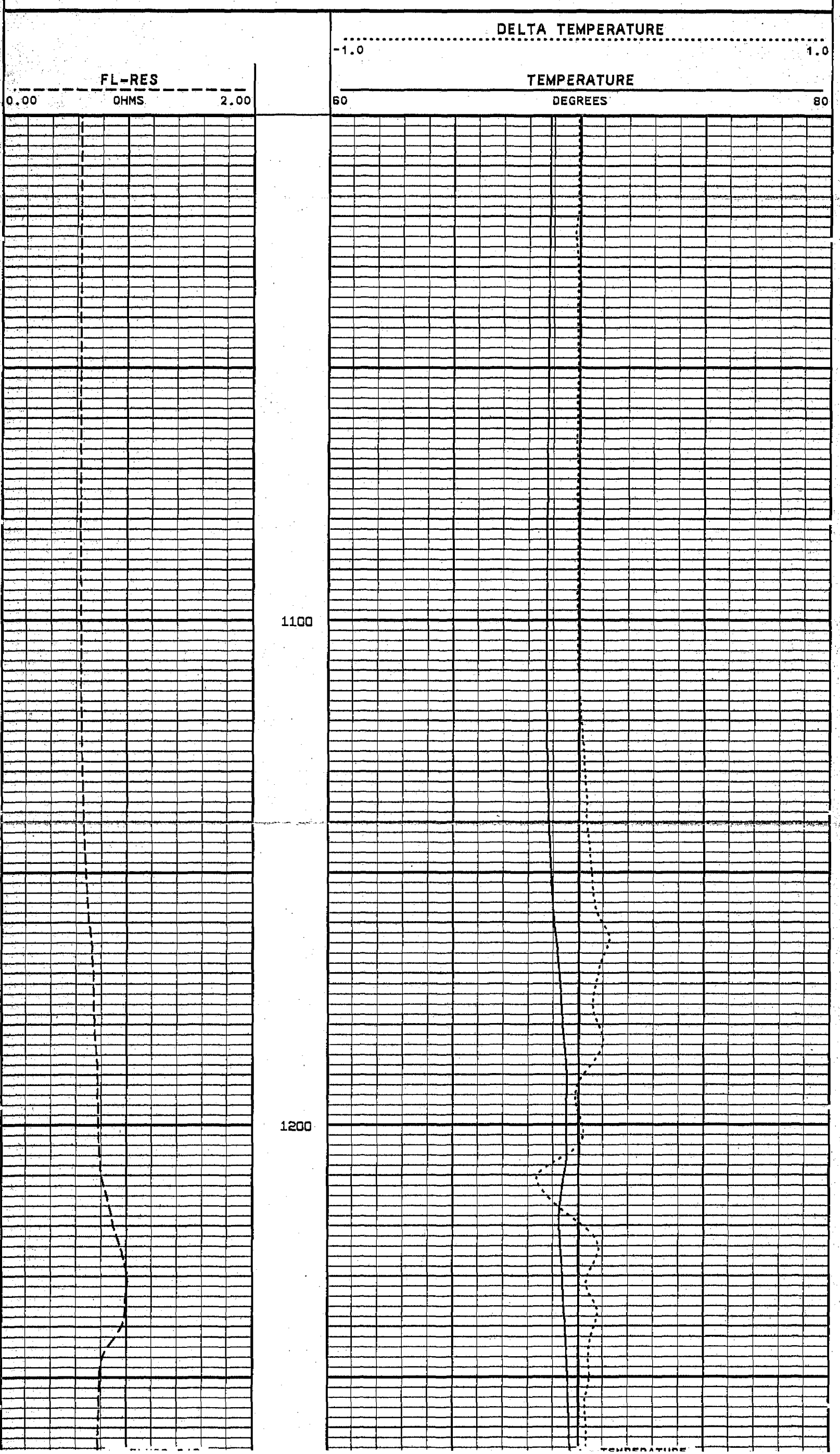
LOGGED GOING DOWNHOLE

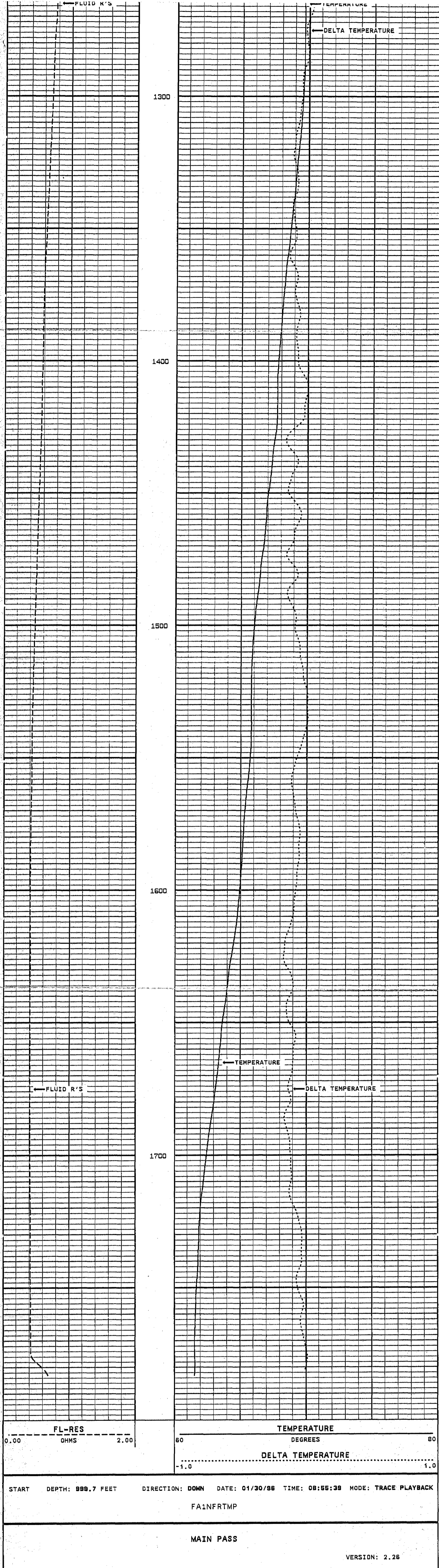
VERSION: 2.26

MAIN PASS

FA1NFRTMP

FINISH DEPTH: 1786.8 FEET DIRECTION: DOWN DATE: 01/30/96 TIME: 09:09:46 MODE: TRACE PLAYBACK





BEFORE SURVEY CALIBRATION SUMMARY

FILE: DATE: 01/30/96 TIME: 14:21 VERSION: 2.26

TEMPERATURE TOOL #31

DATE: 03/10/95 TIME: 14:42

	MEASURED	STANDARD	MINIMUM	MAXIMUM	DEVIATION	UNITS
ZERO	11.2	0.0	11.2	11.2	0.00	DEGF
PLUS	11.2	100.0	11.2	11.2	0.00	DEGF

FL-RES TOOL #31

DATE: 06/10/95 TIME: 12:00

	MEASURED	STANDARD	MINIMUM	MAXIMUM	DEVIATION	UNITS
ZERO	0.20	0.20	0.20	0.20	0.000	OHMS
CAL 2	0.80	0.80	0.80	0.80	0.000	OHMS
CAL 3	4.62	3.20	4.60	4.62	0.005	OHMS
CAL 4	13.46	8.30	13.27	13.54	0.122	OHMS
PLUS	20.00	20.00	20.00	20.00	0.000	OHMS

COMPANY MIAMI-DADE WATER & SEWER

NORTH DISTRICT WWTP

WELL FA-1N

FIELD MIAMI-DADE STATE FLORIDA

