

694712
112

Schlumberger
TEMPERATURE FLOWMETER SURVEY



COMPANY: YOUNGQUIST BROTHERS DRILLING
WELL: C1SD IM ND.2
FIELD: C1SD WMTF
COUNTY: BROWARD
STATE: FLORIDA
LOCATION: CITY OF CORAL SPRINGS FLORIDA

PERMANENT DATUM: PAD
ELEV. OF PERM. DATUM: KB: 22.0 F
LOG MEASURED FROM: PAD
DRLG. MEASURED FROM: PAD
DATE: 3 SEP 89
RUN NO: ONE

DEPTH-DRILLER: 2311.0 F
DEPTH-LOGGER: 2303.0 F
BTM. LOG INTERVAL: 2290.0 F
TOP LOG INTERVAL: 1000.0 F
CASING-DRILLER: 1000.0 F
CASING-LOGGER: 44"
BIT SIZE: 12 1/4
DEPTH:

OTHER SERVICES-
DIL
BHC/VDL
FR
CAL
TEM
FLOW

PROGRAM
TAPE NO:
30.4
SERVICE
ORDER NO:
556651

TYPE FLUID IN HOLE: SALTWATER
DENSITY: 8.80 LB/G
VISCOSITY:
PH:
FLUID LOSS:
SOURCE OF SAMPLE:
RM: AT
RMF: AT
RMC: AT
SOURCE RMF/RMC: /
RM AT BHT: AT
RMF AT BHT: AT
RMC AT BHT: AT
TIME CIRC. STOPPED:
TIME LOGGER ON BTM.:
MAX. REC. TEMP:
LOGGING UNIT NO: 8193
LOGGING UNIT LDC: FT. MYERS
RECORDED BY: SCHULER
WITNESSED BY: BRANTLEY

REMARKS:
VISCOSITY CHANGES PREVENTED COMPLETION OF FLOWMETER SURVEY AT REASONABLE LOGGING SPEEDS.

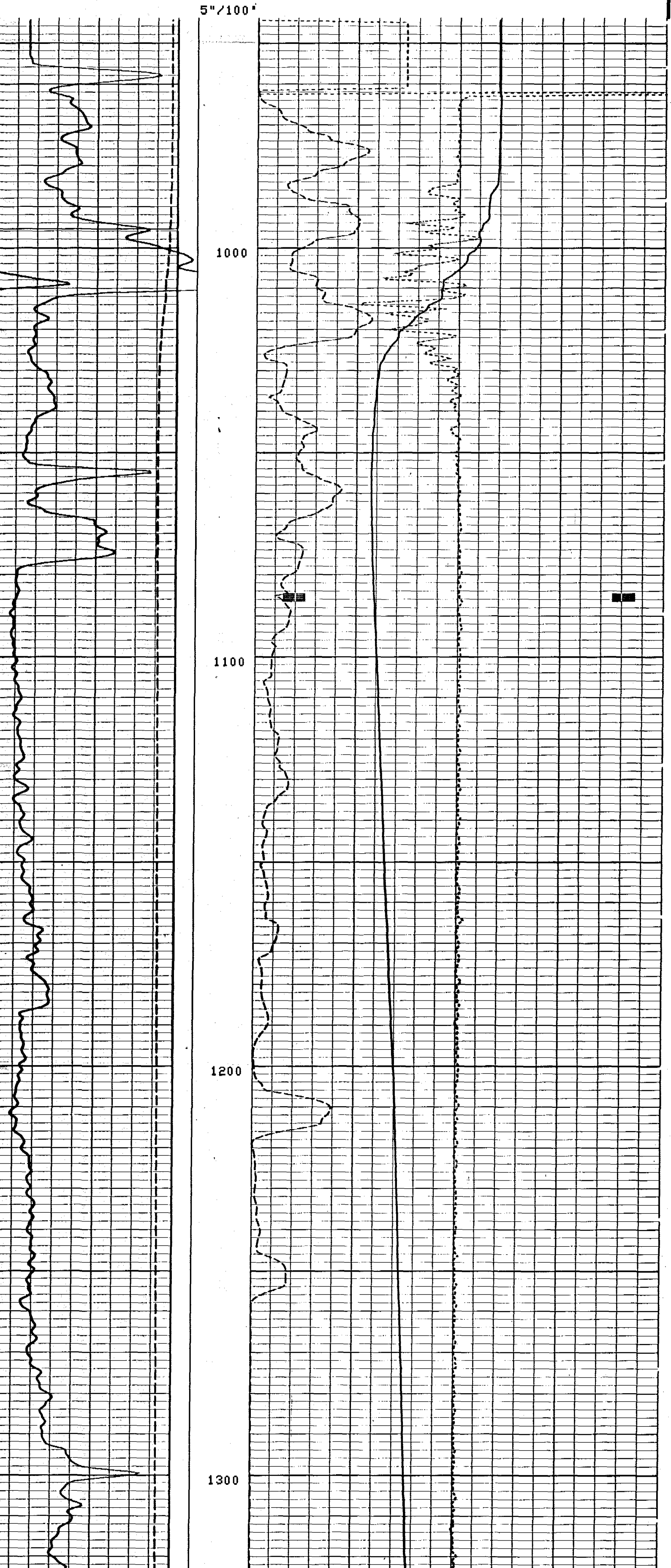
EQUIPMENT NUMBERS-
MTSC FBSB

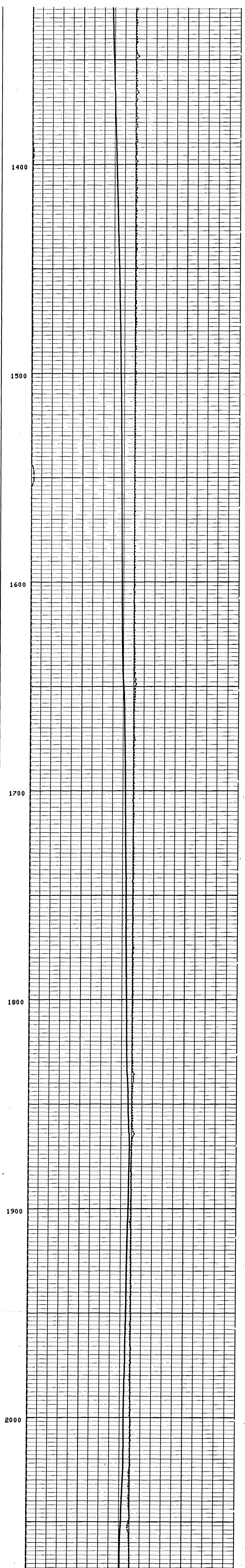
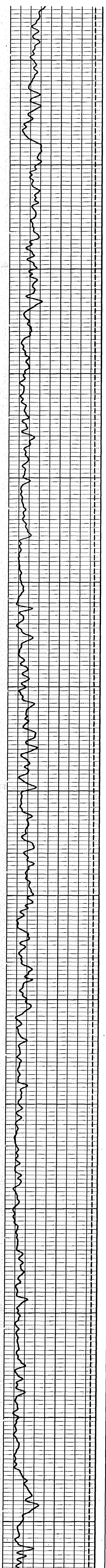
ALL INTERPRETATIONS ARE OPINIONS BASED ON INFERENCES FROM ELECTRICAL OR OTHER MEASUREMENTS AND WE CANNOT, AND DO NOT GUARANTEE THE ACCURACY OR CORRECTNESS OF ANY INTERPRETATIONS, AND WE SHALL NOT, EXCEPT IN THE CASE OF GROSS OR WILLFUL NEGLIGENCE ON OUR PART, BE LIABLE OR RESPONSIBLE FOR ANY LOSS, COSTS, DAMAGES OR EXPENSES INCURRED OR SUSTAINED BY ANYONE RESULTING FROM ANY INTERPRETATION MADE BY ANY OF OUR OFFICERS, AGENTS OR EMPLOYEES. THESE INTERPRETATIONS ARE ALSO SUBJECT TO OUR GENERAL TERMS AND CONDITIONS AS SET OUT IN OUR CURRENT PRICE SCHEDULE.

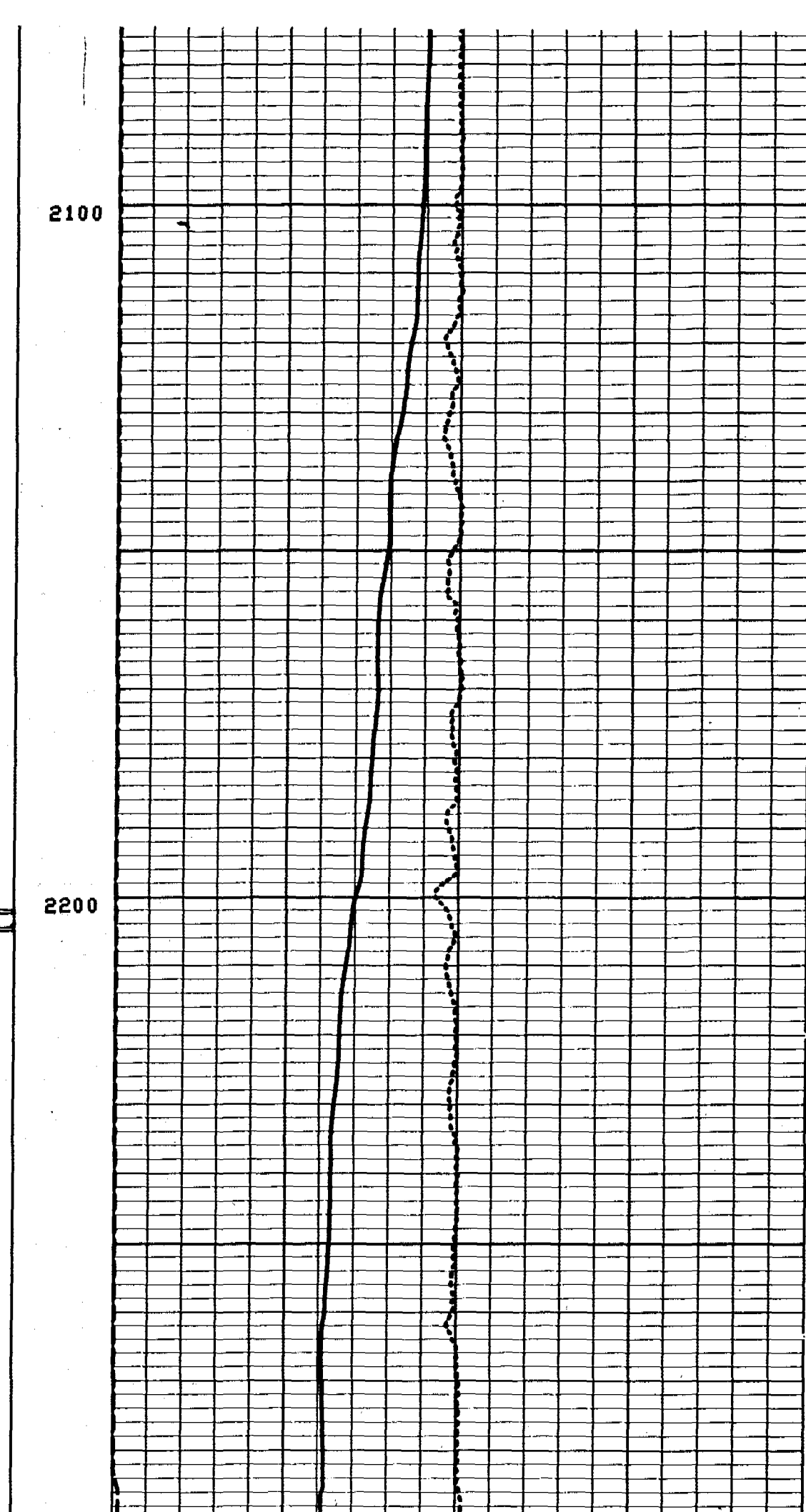
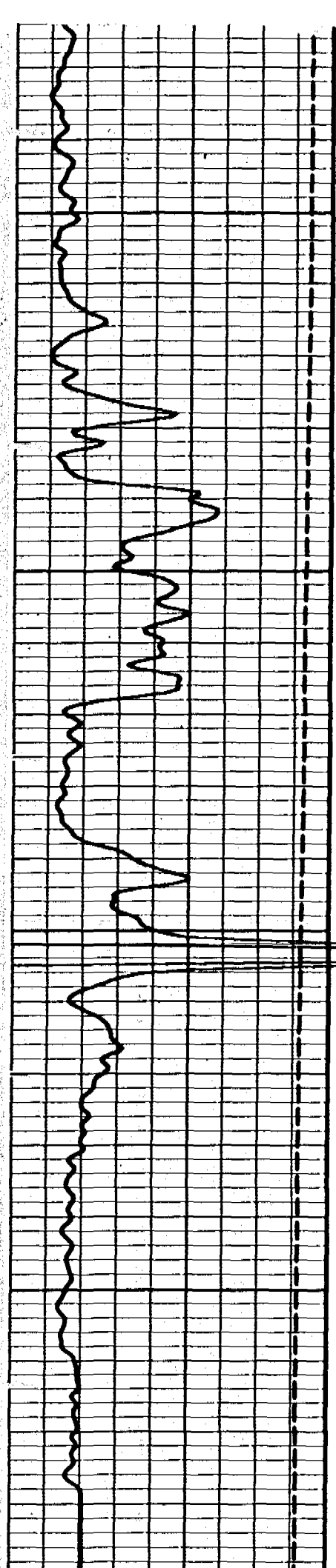
CP 30.4 FILE 8 03-SEP-89 17:33

0.0	100.00	75.000	95.000
TEMP<DEGF>		TEMP<DEGF>	
-13.50	1.5000	-1.000	1.0000
CCL		DTM<DF>/F	
0.0	150.00	0.0	10.000
GR (GAPI)		SPIN<RPS>	

CP 30.4 FILE 1 03-SEP-89 15:15





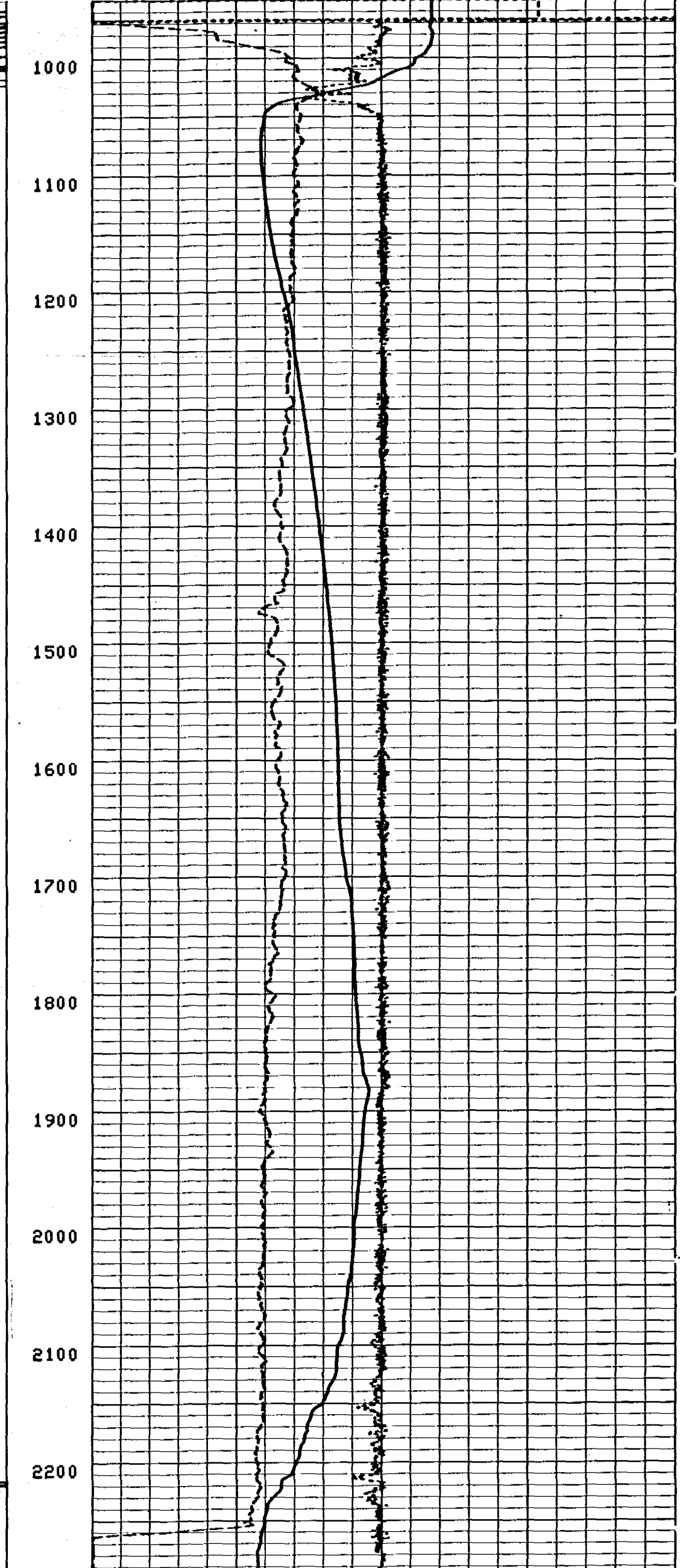
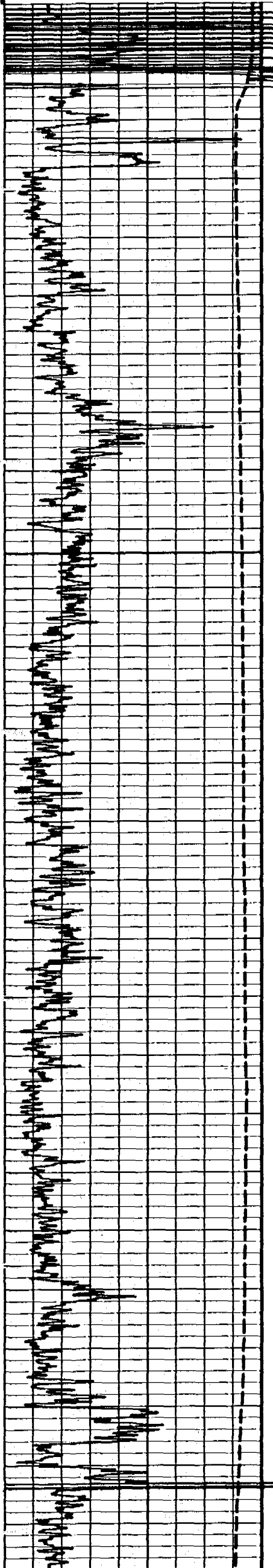


5"/100'

CP 30.4 FILE 1 03-SEP-89 15:49

SCALE CHANGES	0.0	1085	10.000
	0.0	SPIN	20.000
0.0	TEMP<DEGF>	100.00	75.000
-13.50	CCL	1.5000	TEMP<DEGF>
0.0	GR <GAP>	150.00	-1.000
			DTEM<DF/F>
			0.0
			SPIN<RPS>
			20.000
0.0	TEMP<DEGF>	100.00	75.000
-13.50	CCL	1.5000	TEMP<DEGF>
0.0	GR <GAP>	150.00	-1.000
			DTEM<DF/F>
			0.0
			SPIN<RPS>
			20.000

CP 30.4 FILE 8 03-SEP-89 17:07



1"/100'

CP 30.4 FILE 8 03-SEP-89 17:14

0.0	TEMP<DEGF>	100.00	75.000	TEMP<DEGF>	95.000
-13.50	CCL	1.5000	-1.000	DTEM<DF/F>	1.0000
0.0	GR <GAP>	150.00	0.0	SPIN<RPS>	20.000

BEFORE SURVEY CALIBRATION SUMMARY

PERFORMED: 03-SEP-89 14:52
 PROGRAM FILE: PL (VERSION 30.4 00/00/00 87/11/19)

MTSC ELECTRONICS CALIBRATION SUMMARY

	MEASURED ZERO	PLUS	CALIBRATED ZERO	PLUS	UNITS
MP	0.0	0.0	0.0	0.0	PSIG

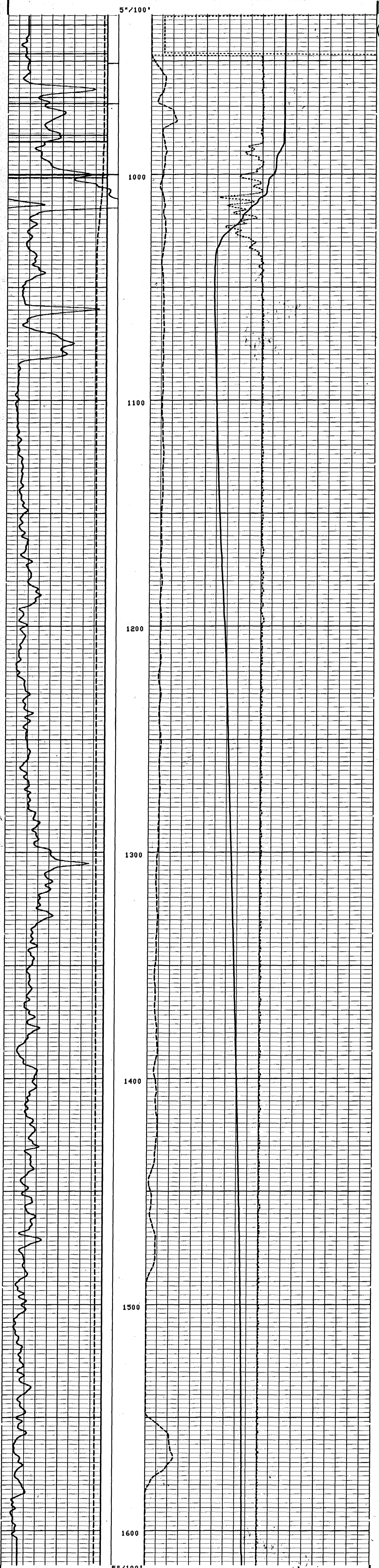
MTSC ELECTRONICS CALIBRATION SUMMARY

	MEASURED ZERO	PLUS	CALIBRATED ZERO	PLUS	UNITS
TEMP	52.3	160.6	0.0	200.0	DEGF

0.0	TEMP<DEGF>	100.00	75.000	TEMP<DEGF>	95.000
-13.50	CCL	1.5000	-1.000	DTEM<DF/F>	1.0000
0.0	GR <GAP>	150.00	0.0	SPIN<RPS>	20.000

CP 30.4 FILE 2 03-SEP-89 16:11

5



CP 30.4

FILE 2

03-SEP-89 16:24

0.0	100.00
TEMP<DEGF>	
-13.50	1.5000
CCL	
0.0	150.00
GR (GAPI)	

75.000	95.000
TEMP<DEGF>	
-1.000	1.0000
DTEM<DF/F>	
0.0	20.000
SPIN<RPS>	