

# Woodward-Clyde Consultants

WCC No. 86C5311

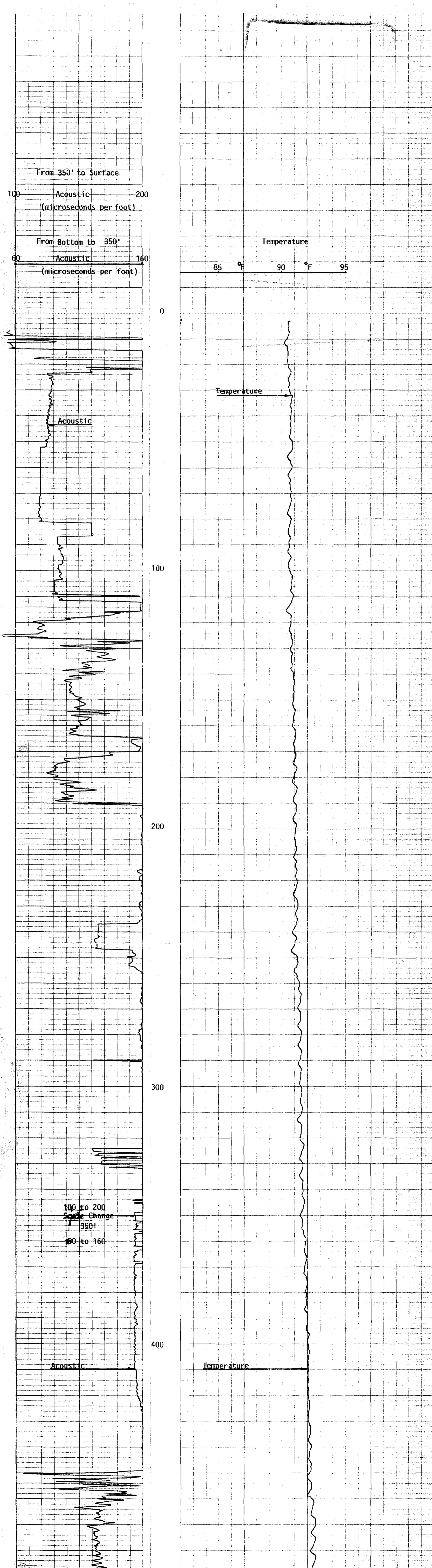
678703

GEOPHYSICAL WELL LOG Acoustic Temperature	PERMANENT DATUM: Mean Sea Level ; ELEV.: <u>JD M.S.L.</u> LOG MEASURED FROM Land Surface, <u>0</u> Ft. ABOVE PERM. DATUM DRILLING MEASURED FROM <u>Land Surface</u>	OTHER SERVICES: Gamma Caliper 16" 64" Sp	COMPANY No. <u>86-95</u> WELL <u>Century Village Deep Inj.</u> LOCATION <u>Broward County</u>
---	---	---	---

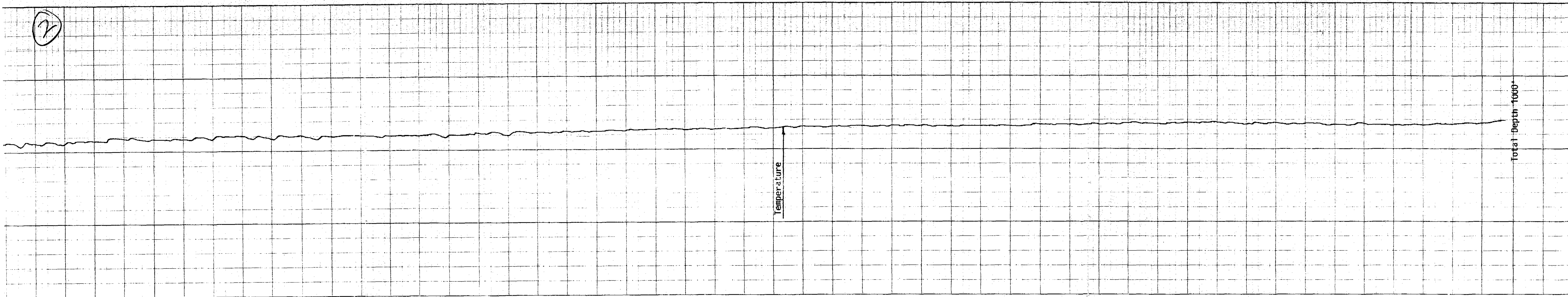
COMPANY <u>Youngquist Brothers</u> WELL <u>Century Village Deep Injection Well Run #1</u> FIELD <u>End of Pembroke Ave.</u> COUNTY <u>Broward</u> STATE <u>Fla</u>	T 51S, R 40E COORDINATES: Sec. 22 N 25° 59' 36" LAT W 80° 19' 57" LONG. ELEVATION: K.B. D.F. G.L.
---	--

	Run No. 1	Run No. 2	MUD	Run No. 1	Run No. 2
Date	8-14-86		Nature		
First Reading	2		Density		
Last Reading	1000'		Viscosity	@ of	@ of
Footage Logged			Resistivity	@ of	@ of
Bottom (Driller)	1000'		Res. @ BHT	@ of	@ of
Casing (From Log)	116'		pH		
Casing (Driller)	120'		Circ. Temp.		
Casing Size	42"		BH Temp.		
Bit Size:	12 1/2"				
Bit Size:			Logged by	G. Maddux	
			Witnessed by	J. Brantley	

REMARKS The Temperature tool was not calibrated. A calibrated computer printout of temperature in degrees Farenheit is presented with the Differential temperature log.



7



Total Depth 1000'

