

677 638

Schlumberger

HIGH RESOLUTION TEMPERATURE LOG

CSU Field Log

COMPANY: YOUNGQUIST BROTHERS DRILLING
 WELL: PLANTATION RD REJECT INJECTION WELL #1
 FIELD: PLANTATION
 COUNTY: BROWARD
 STATE: FLORIDA
 LOCATION: CITY OF PLANTATION
 MEMBRANE SOFTENING FACILITY

PERMANENT DATUM: PAD 7.2 F
 ELEV. OF PERM. DATUM: 7.2 F
 LOG MEASURED FROM: PAD ABOVE PERM. DATUM
 DRLG. MEASURED FROM: PAD

ELEVATIONS-
 KB: 17.8 F
 DF: 7.2 F
 GL: 7.2 F

DATE: 29 MAY 90
 RUN NO: FOUR

DEPTH-DRILLER: 2800.0 F
 DEPTH-LOGGER: 2797.0 F
 BTM. LOG INTERVAL: 2751.0 F
 TOP LOG INTERVAL: 50.0 F
 CASING-DRILLER: 2780.0 F
 CASING-LOGGER: 2780.0 F
 CASING: 16"
 HEIGHT: 22 1/2"
 BIT SIZE: 2800.0 F
 DEPTH:

OTHER SERVICES-
 CBL/VDL

PROGRAM
 TAPE NO:
 30.4

TYPE FLUID IN HOLE: WATER
 MAX. REC. TEMP: 121.0 DEGF
 LOGGING UNIT NO: 8193
 LOGGING UNIT LOC: FORT MYERS
 RECORDED BY: S. MILLER
 WITNESSED BY: J. BRANTLEY

REMARKS:
 DATA GATHERED LOGGING DOWN.
 DRILLER'S ESTIMATE CEMENT TAG IS 2730'.
 LOGGER'S CEMENT TD IS 2754'.
 INSIDE ID OF CASING IS 15".

EQUIPMENT NUMBERS-

ALL INTERPRETATIONS ARE OPINIONS BASED ON INFERENCES FROM ELECTRICAL OR OTHER MEASUREMENTS AND WE CANNOT, AND DO NOT GUARANTEE THE ACCURACY OR CORRECTNESS OF ANY INTERPRETATIONS, AND WE SHALL NOT, EXCEPT IN THE CASE OF GROSS OR WILLFUL NEGLIGENCE ON OUR PART, BE LIABLE OR RESPONSIBLE FOR ANY LOSS, COSTS, DAMAGES OR EXPENSES INCURRED OR SUSTAINED BY ANYONE RESULTING FROM ANY INTERPRETATION MADE BY ANY OF OUR OFFICERS, AGENTS OR EMPLOYEES. THESE INTERPRETATIONS ARE ALSO SUBJECT TO OUR GENERAL TERMS AND CONDITIONS AS SET OUT IN OUR CURRENT PRICE SCHEDULE.

CP 30.4 FILE 3 29-MAY-90 20:38

PARAMETERS

NAME	VALUE	UNIT	NAME	VALUE	UNIT
WMUD	8.30000	LB/G	SGSN	0000A-00011	
CDAT			FCHD	CSID	
PTHR	10.0000	F/MN	NTHR	-10.0000	F/MN
TIRA	.500000		VPCF	.830000	
FDSH	0.0	G/C3	QIDP	FLOW	
TCSH	0.0	IN	BS	8.00000	IN
BHS	CASE				

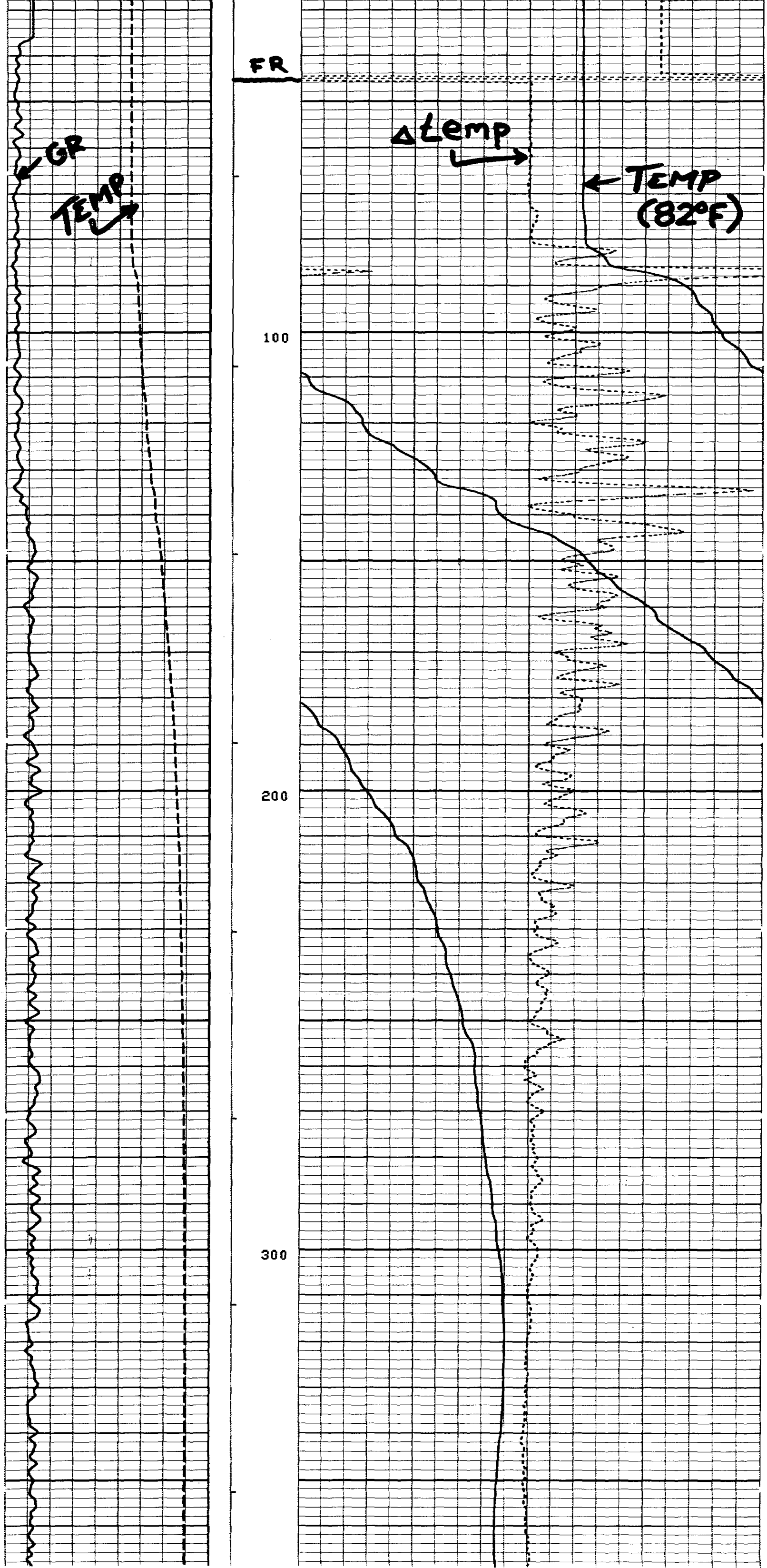
SENSOR MEASURE POINT TO TOOL ZERO

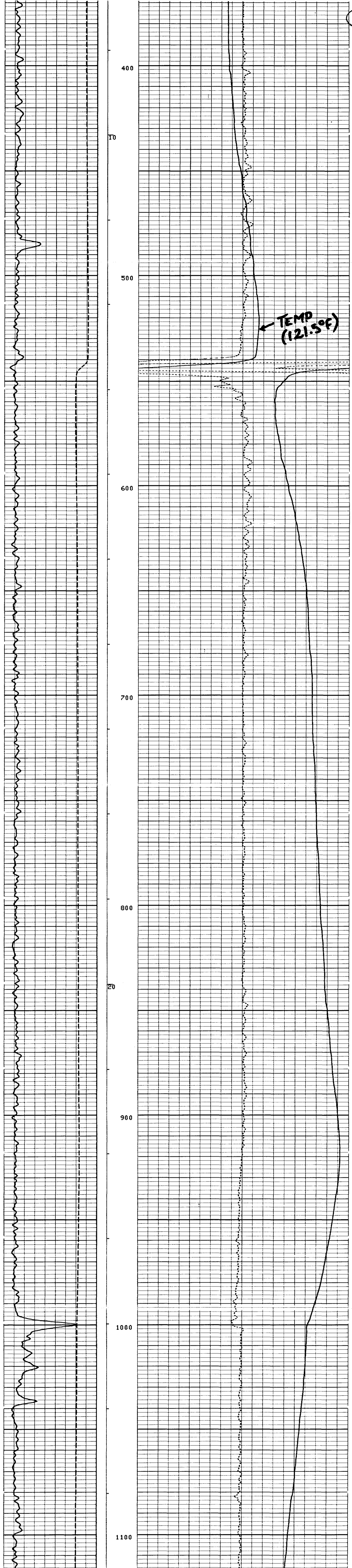
DTEM	2.5	FEET	MP	1.1	FEET
TEMP	2.5	FEET	CCL	19.2	FEET
CVEL	0.0	FEET	TENS	19.2	FEET
EXT	0.0	FEET	EXP3	0.0	FEET
EXP2	0.0	FEET	EXP1	0.0	FEET
GR	10.3	FEET			

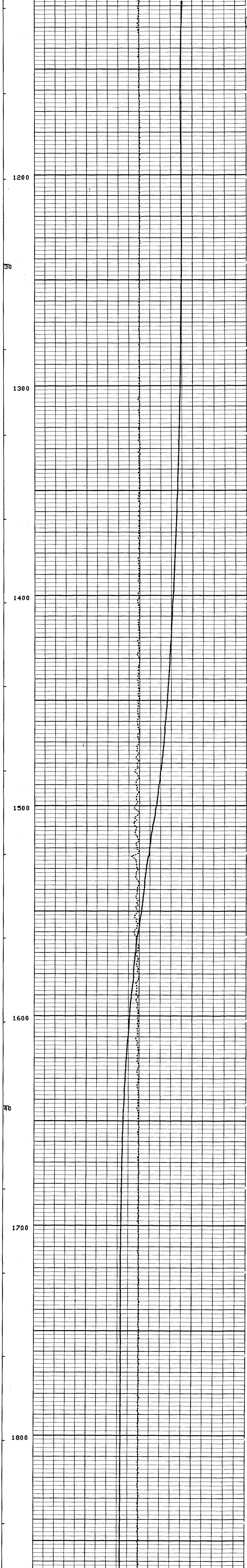
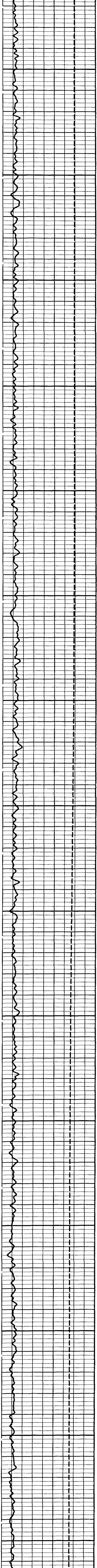
0.0	GR (GAPI)	100.00	70.000	TEMP(DEGF)	90.000
-13.50	CCL	1.5000	-1.000	DTEM(DF>F)	1.0000
0.0	TEMP(DEGF)	150.00			

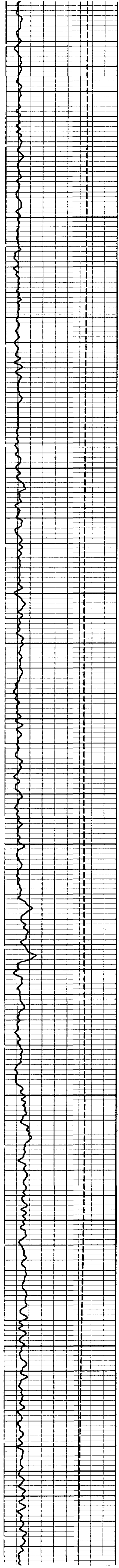
CP 30.4 FILE 2 29-MAY-90 19:26

5"/100"

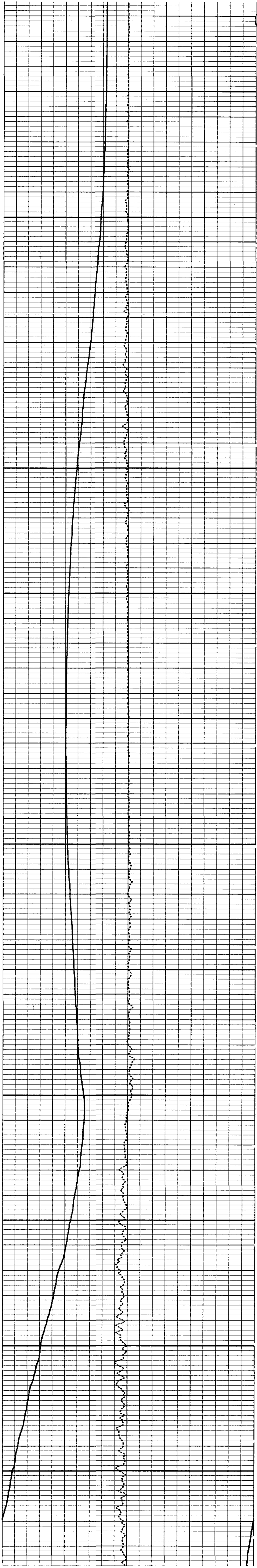


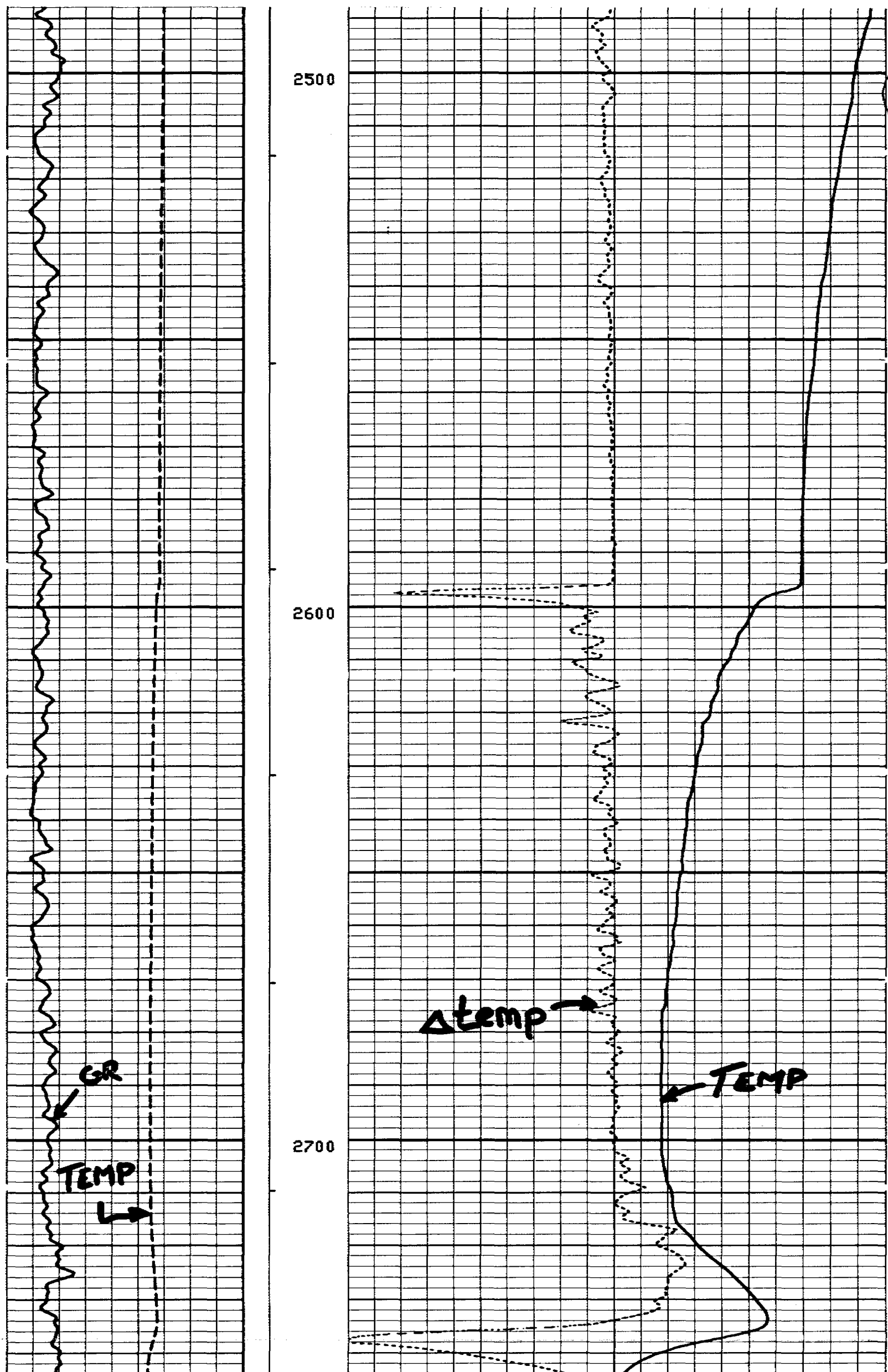






1900
2000
50
2100
2200
2300
2400
60





5"/100"

CP 30.4

FILE 2

29-MAY-90 20:35

0.0	100.00	70.000	90.000
GR (GAPI)		TEMP<DEGF>	
-13.50	1.5000	-1.000	1.0000
CCL		DTEM<DF/F>	
0.0	150.00		
TEMP<DEGF>			

DATA ACQUIRED LOGGING DOWN

ETIM 60.0000 S LEFT EDGE

BEFORE SURVEY CALIBRATION SUMMARY

PERFORMED: 29-MAY-90 19:12
 PROGRAM FILE: PL (VERSION 30.4 00/00/00 87/11/19)

MTSC ELECTRONICS CALIBRATION SUMMARY

TEMP	MEASURED		CALIBRATED		UNITS
	ZERO	PLUS	ZERO	PLUS	
	52.3	160.5	0.0	200.0	DEGF

ATTB DETECTOR CALIBRATION SUMMARY

GR	MEASURED		CALIBRATED	UNITS
	BKGD	JIG		
	87	188	135	GAPI

BACK: 02-AUG-88 11:42 JIG: 02-AUG-88 11:46 COMP: 02-AUG-88 11:46

CP 30.4

FILE 0

29-MAY-90 19:12

Schlumberger

HIGH RESOLUTION TEMPERATURE LOG

CSU Field Log