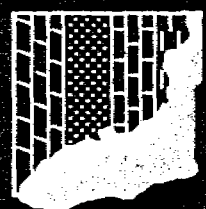


691610



FLORIDA

GEOPHYSICAL LOGGING, INC.

FLUID RESISTIVITY TEMPERATURE LOG

COMPANY CITY OF FT. LAUDERDALE W.T.P.

WELL FLORIDAN MONITOR WELL #1

FIELD FIVEASH

COUNTY BROWARD

LOCATION

STATE FLORIDA

OTHER SERVICES:
FLOWMETER
X-Y CALIPER
GAMMA RAY

SEC. _____ TWP. _____ RGE. _____

PERMANENT DATUM PAD LEVEL _____ ELEV. _____

LOG MEASURED FROM PAD _____ FT. ABOVE PERMANENT DATUM

DRILLING MEASURED FROM PAD _____

DATE 13-MARCH-1998

RUN NO. _____

TYPE LOG FRI

DEPTH-DRILLER 1175'

DEPTH-LOGGER 1175'

LOGGED INTERVAL 1175' TO 945'

OPERATING RIG TIME 1.5 HOURS

TYPE FLUID IN HOLE WATER

SALINITY, PPM CL NA

DENSITY-VISCOSITY NA

LEVEL FULL

MAX. REC. TEMP, DEG F. NA

EQUIPMENT-LOCATION 102 FTM

RECORDED BY LEE/MILLER

WITNESSED BY N. JOHNSON

RUN NO.	BOREHOLE RECORD			CASING RECORD			
	BIT	FROM	TO	SIZE	WGT.	FROM	TO
SIX	12 1/4"	1175'	CASING	14"	.5 M.T.	370'	SURFACE
	5"	1175'	CASING	8"		1055'	SURFACE

ALL INTERPRETATIONS ARE OPINIONS BASED ON INFERENCES FROM ELECTRICAL OR OTHER MEASUREMENTS AND WE CANNOT AND DO NOT GUARANTEE THE ACCURACY OR CORRECTNESS OF ANY INTERPRETATION, AND WE SHALL NOT, EXCEPT IN THE CASE OF GROSS OR WILLFULL NEGLIGENCE ON OUR PART, BE LIABLE OR RESPONSIBLE FOR ANY LOSS, COSTS, DAMAGES, OR EXPENSES INCURRED OR SUSTAINED BY ANYONE RESULTING FROM ANY INTERPRETATION MADE BY ANY OF OUR OFFICERS, AGENTS OR EMPLOYEES. THESE INTERPRETATIONS ARE ALSO SUBJECT TO OUR GENERAL TERMS AND CONDITIONS SET OUT IN OUR CURRENT PRICE SCHEDULE.

REMARKS

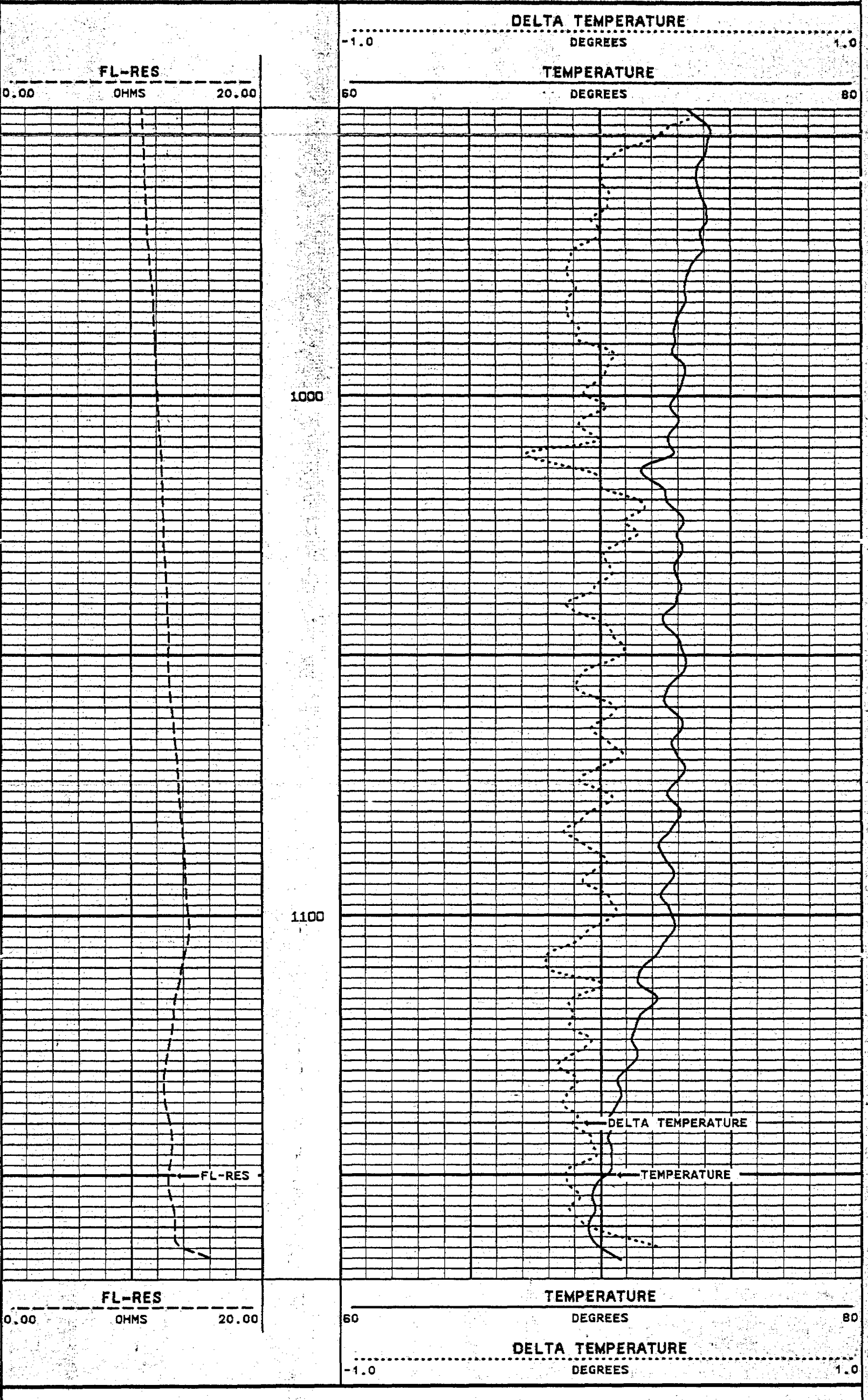
FLOWRATE = 100 GPM.

VERSION: 2.42

DYNAMIC PASS

FA1FRTDY

FINISH DEPTH: 949.9 FEET DIRECTION: UP DATE: 03/13/98 TIME: 10:23:48 MODE: TRACE PLAYBACK



START DEPTH: 1170.0 FEET DIRECTION: UP DATE: 03/13/98 TIME: 10:23:00 MODE: TRACE PLAYBACK

FA1FRTDY

DYNAMIC PASS

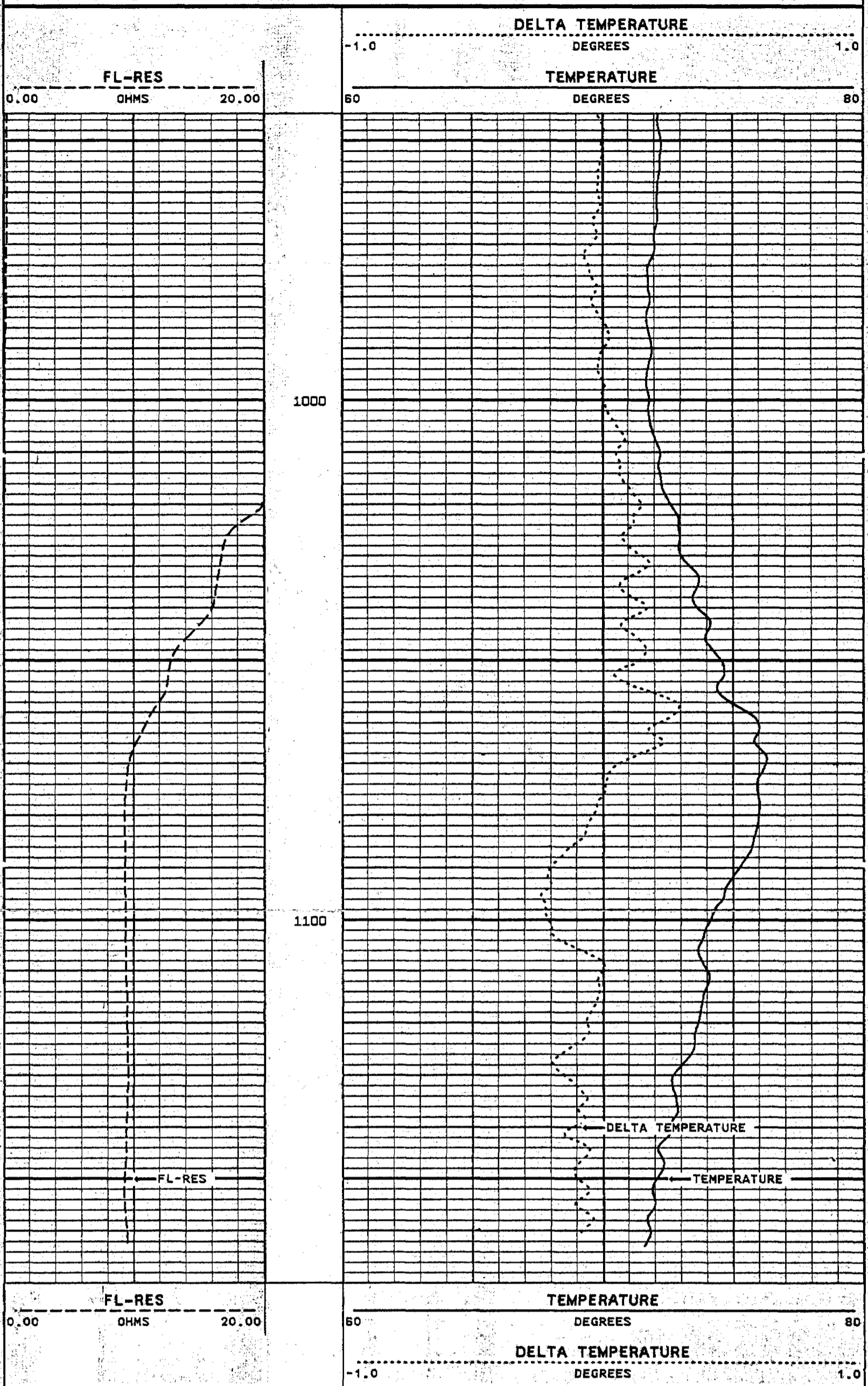
VERSION: 2.42

STATIC PASS

2

FA1FRTST

FINISH DEPTH: 949.9 FEET DIRECTION: UP DATE: 03/13/98 TIME: 10:21:02 MODE: TRACE PLAYBACK



START DEPTH: 1170.0 FEET DIRECTION: UP DATE: 03/13/98 TIME: 10:19:56 MODE: TRACE PLAYBACK

FA1FRTST

STATIC PASS

MASTER CALIBRATION SUMMARY

FILE: DATE: 03/13/98 TIME: 10:08 VERSION: 2.42

TEMPERATURE #31

DATE: 03/13/98 TIME: 08:26

	MEASURED	UNITS	STANDARD	MINIMUM	MAXIMUM	DEVIATION	UNITS
ZERO	283.1	CPS	69.6	69.5	69.6	0.04	DEGF
PLUS	386.8	CPS	91.0	91.0	91.0	0.00	DEGF

FL-RES TOOL #31

DATE: 03/13/98 TIME: 08:26

	MEASURED	UNITS	STANDARD	MINIMUM	MAXIMUM	DEVIATION	UNITS
SONDEX 50000	8770.0	CPS	0.20	0.20	0.20	0.000	CPS
SONDEX 25000	4540.0	CPS	0.40	0.40	0.40	0.000	CPS
SONDEX 10000	2380.0	CPS	0.80	0.80	0.80	0.000	CPS
SONDEX 500	89.0	CPS	20.00	20.00	20.00	0.000	CPS

COMPANY CITY OF FT. LAUDERDALE
 FIVEASH WATER TREATMENT PLANT
 WELL F.M.W. #1
 FIELD FIVEASH STATE FLORIDA

