

#1335
HALLIBURTON
 GAMMA RAY
 DEPTH CONTROL

Company: CENTURY OIL COMPANY, INC.
 Well: HUGH STARNES 30-2
 Field: CORKSCREW
 County: COLLIER
 State: FL

Location: 1416 FNL AND 1491 FNL
 LAT: 26.44N / LON: 81.56W

Permit # 11335
 F.D.P. Bureau of Mining & Mineral Regulation
 Rec'd: Mar. 20, 2012 at 7:10 AM

Company: CENTURY OIL COMPANY, INC.
 Well: HUGH STARNES 30-2
 Field: CORKSCREW
 County: COLLIER
 State: FL

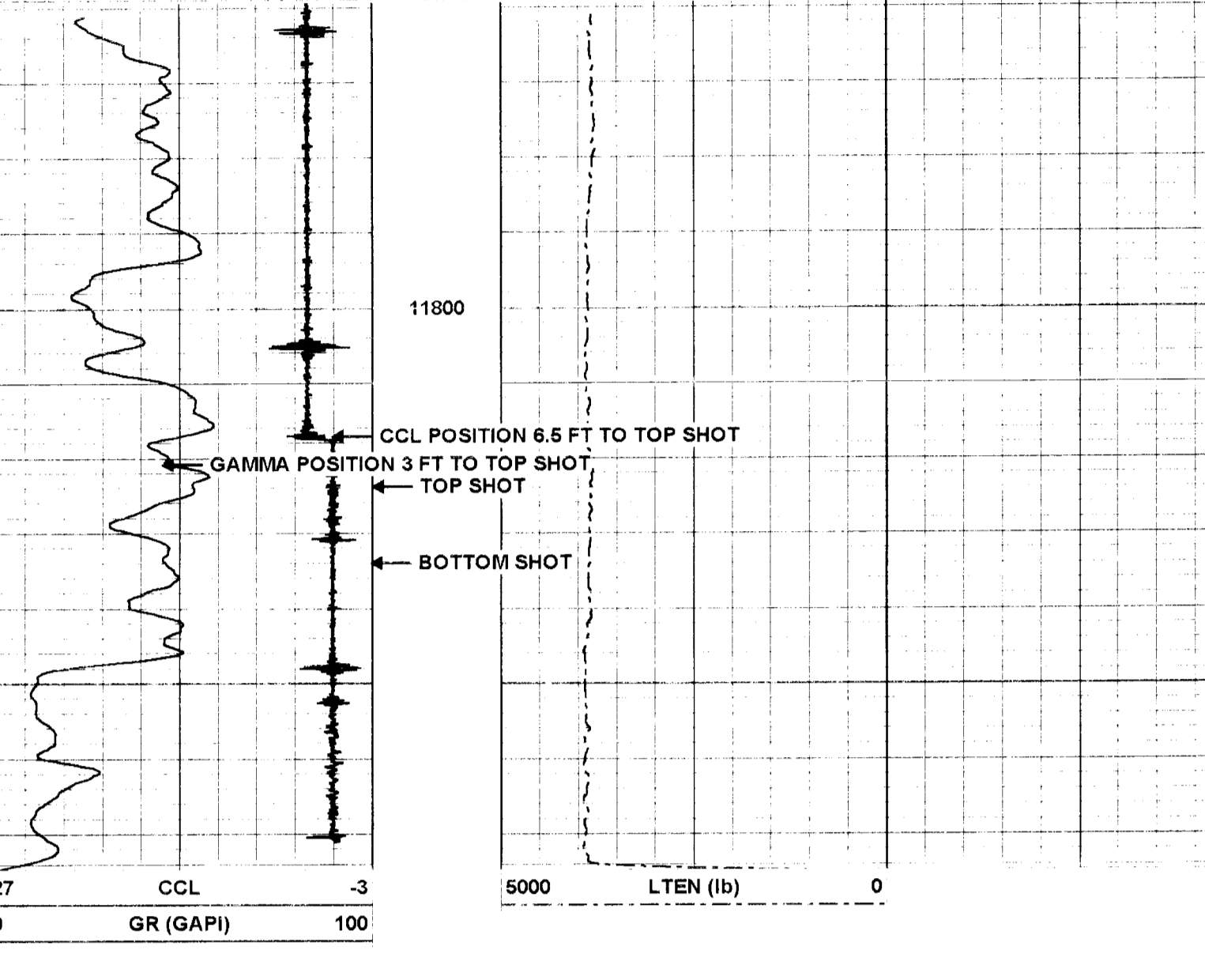
Permit # 11335
 F.D.P. Bureau of Mining & Mineral Regulation
 Rec'd: Mar. 20, 2012 at 7:10 AM

HALLIBURTON DOES NOT GUARANTEE THE ACCURACY OF ANY INTERPRETATION OF THE LOG DATA, CONVERSION OF LOG DATA TO PHYSICAL ROCK PARAMETERS OR RECOMMENDATIONS WHICH MAY BE GIVEN BY HALLIBURTON PERSONNEL OR WHICH APPEAR ON THE LOG OR IN ANY OTHER FORM. ANY USER OF SUCH DATA, INTERPRETATIONS, CONVERSIONS, OR RECOMMENDATIONS AGREES THAT HALLIBURTON IS NOT RESPONSIBLE EXCEPT WHERE DUE TO GROSS NEGLIGENCE OR WILLFUL MISCONDUCT, FOR ANY LOSS, DAMAGES, OR EXPENSES RESULTING FROM THE USE THEREOF.

Comments
 LOG DEPTHS CORRELATED TO HES QUAD COMBO RUN TWO DATED 2/21/12.
 PERFORATED 11824-834
 WITH 3 3/8 HSC 4 SPF 90 DEG
 HES SERVICE CREW: WEST / SHANKS
 THANK YOU FOR CHOOSING HALLIBURTON. 601-649-9290

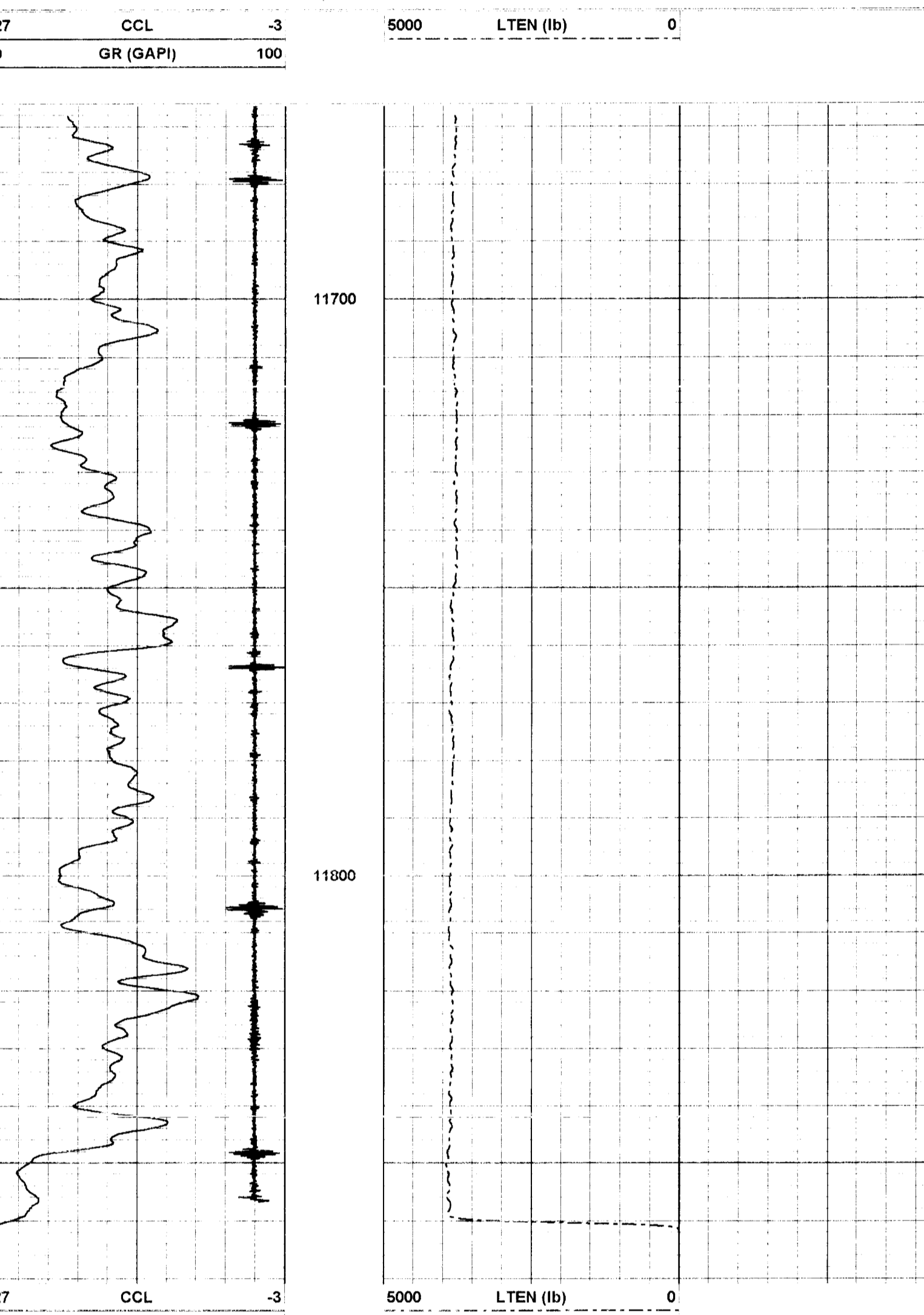
HALLIBURTON LOG INTO POSITION

Database File: century_pollister_starnes_30_2.db
 Dataset Pathname: Corkscrew/Hugh_star/run1/pass10
 Presentation Format: gr-ccl
 Dataset Creation: Mon Mar 19 10:27:06 2012 by Log Halliburton Casetho
 Charted by: Depth in Feet scaled 1:240



HALLIBURTON TIE IN LOG

Database File: century_pollister_starnes_30_2.db
 Dataset Pathname: Corkscrew/Hugh_star/run1/pass9
 Presentation Format: gr-ccl
 Dataset Creation: Mon Mar 19 10:18:05 2012 by Log Halliburton Casetho
 Charted by: Depth in Feet scaled 1:240



Sensor	Offset (ft)	Schematic	Description	Len (ft)	OD (in)	Wt (lb)
			STD-Standard (0000)	1.02	1.45	5.00
CCL	3.50		GPLT-T-GPLT-TGR (ERIC) Titan DC Perforator Gamma-Ray	6.86	3.38	121.00
GR	0.00		QUICK QUICK CHANGE	0.73	3.25	2.00
LLMTEN	0.00		10FT 3 3/8 HSC	11.00	3.63	100.00

Dataset: century_pollister_starnes_30_2.db Corkscrew/Hugh_star/run1/pass10
 Total Length: 19.61 ft
 Total Weight: 228.00 lb
 O.D.: 3.63 in

Company: CENTURY OIL COMPANY, INC.
 Well: HUGH STARNES 30-2
 Field: CORKSCREW
 County: COLLIER
 State: FL
 GAMMA RAY
 DEPTH CONTROL