

Max Circulating Temp (* F)	124	134	144	160	147			
Company Representative	R. Baughman	R. Baughman	R. Baughman	R. Baughman	R. Baughman			
Field Engineer	N. Augustine	N. Augustine	N. Augustine	N. Augustine	N. Augustine			

Equipment Data								
----------------	--	--	--	--	--	--	--	--

INTEQ Run Number	1	2	3	4	5			
Modular Assembly Number	1	2	3	4	N/A			
Drill Collar S/N	48368	48369	35164	N/A	N/A			
Master S/N	11801256	11750293	11661261	10048124	11940704			
Drill Collar Converter S/N	N/A	N/A	N/A	N/A	N/A			
Pressure Sub S/N	N/A	N/A	N/A	N/A	N/A			
Neutron Sub S/N	N/A	N/A	N/A	N/A	N/A			
Neutron Source S/N	N/A	N/A	N/A	N/A	N/A			
Density Sub S/N	N/A	N/A	N/A	N/A	N/A			
Density Source S/N	N/A	N/A	N/A	N/A	N/A			
Gamma Sub S/N	11801256	11823451	10416854	11823443	10577950			
Resistivity Detector S/N	N/A	N/A	N/A	N/A	N/A			
Resistivity Sub S/N	N/A	N/A	N/A	N/A	N/A			

Sensor Offsets to Bit (ft) / Acquisition Rates (sec)								
--	--	--	--	--	--	--	--	--

Bottom of INTEQ MWD (ft)	34.83	34.84	34.66	58.78	12.29			
Resistivity	N/A /	NA /	NA /	NA /	NA /	/	/	/
Gamma Ray	39.16 / 13	38.92 / 13	40.08 / 13	65.20 / 13	26.10 / 13	/	/	/
Pressure	N/A /	N/A /	N/A /	N/A /	N/A /	/	/	/
Density	N/A /	N/A /	N/A /	N/A /	N/A /	/	/	/
Neutron	N/A /	N/A /	N/A /	N/A /	N/A /	/	/	/
Directional	42.58 / 30	43.26 / 30	43.41 / 30	68.61 / 30	29.48 / 30	/	/	/
Temperature	42.58	43.26	43.41	68.61	29.48			

Other Tool Information								
------------------------	--	--	--	--	--	--	--	--

Total INTEQ Length (ft)	64.46	64.75	63.07	89.57	36.29			
Assembly Type	AutoTrak	AutoTrak	AutoTrak	AutoTrak	Steerable			
Stabilizer above Resistivity (ft)	N/A	N/A	N/A	N/A	N/A			
Stabilizer below Resistivity (ft)	N/A	N/A	N/A	N/A	N/A			
Run Circulating Time (hrs)	67.5	37.7	28.2	87.9	8.8			

Environmental Parameters							
--------------------------	--	--	--	--	--	--	--

Date & Time	Run No.	Bit Depth (ft)	Rm @ BHCT (ohmm) / (* F)	Mud Weight (ppg)	K (%)	Rmf @ BHCT (ohmm) / (* F)
18 Jul 2011 23:00	1	5942	N/A / 116	8.9	N/A	N/A / 116
20 Jul 2011 23:00	1	7910	N/A / 124	9.1	N/A	N/A / 124
21 Jul 2011 23:00	2	8355	N/A / 130	9.1	N/A	N/A / 130
23 Jul 2011 23:00	2	9776	N/A / 134	9.2	N/A	N/A / 134
24 Jul 2011 23:00	3	10102	N/A / 142	9.1	N/A	N/A / 142
25 Jul 2011 23:00	3	10333	N/A / 142	9.0	N/A	N/A / 142
31 Jul 2011 23:00	4	11536	N/A / 160	9.0	N/A	N/A / 160
01 Aug 2011 23:00	5	12063	N/A / 147	9.3	N/A	N/A / 147

Remarks

MNEMONICS:

- ROP_AVG > Rate of Penetration, ft/hr 3.0 ft. Avg.
GRAX > Gamma Ray Apparent, API 1.0 ft. Avg.
TVD > True Vertical Depth, ft.
WOB_AVG > Surface Weight on Bit, kbf 1.0 ft. Avg.
TCDX > Downhole Temperature, deg. F
SINCL > Survey Inclination, deg.

COMMENTS:

- 1) Baker Hughes INTEQ runs 1 through 4 utilized 6 3/4 inch NaviGamma services (Gamma Ray and Directional) behind a 9 7/8 inch bit and rotary steerable assembly from 5512 to 12216 feet MD (5511 to 11315 feet TVD).
- 2) Baker Hughes INTEQ run 5 utilized 6 3/4 inch NaviGamma services (Gamma Ray and Directional) behind a 9 7/8 inch bit and steerable assembly from 12216 to 12240 feet MD (11315 to 11327 feet TVD).
- 3) Depth measurements were obtained from a depth control system not supplied or operated by Baker Hughes INTEQ. Due to the lack of control by Baker Hughes INTEQ logging engineers, depth calibrations and measurements could not be independently verified and the unverified depths as supplied to INTEQ are being used to present logging data.

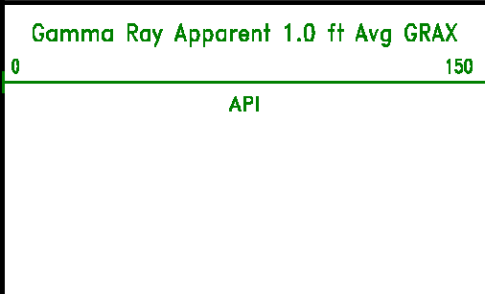
REMARKS:

- 1) The interval from 5473 to 5512 feet MD (5472 to 5511 feet TVD) was logged up to 45.2 hours after being drilled due to casing operations.
- 2) The interval from 8313 to 8352 feet MD (8111 to 8143 feet TVD) was logged up to 13.7 hours after being drilled due to a trip out of the hole to replace the MWD.
- 3) The interval from 9740 to 9776 feet MD (9478 to 9513 feet TVD) was logged up to 18.6 hours after being drilled due to a trip out of the hole to replace the BHA.
- 4) The interval from 10293 to 10333 feet MD (9980 to 10013 feet TVD) was logged up to 104 hours after being drilled due to a trip out of the hole for well control operations.
- 5) The interval from 12151 to 12214 feet MD (11282 to 11315 feet TVD) was ream logged up to 31.5 hours after being drilled due to a trip out of the hole to replace the BHA.
- 6) The interval from 12214 to 12240 feet MD (11314 to 11327 feet TVD) was not logged due to sensor to bit offset at well TD.

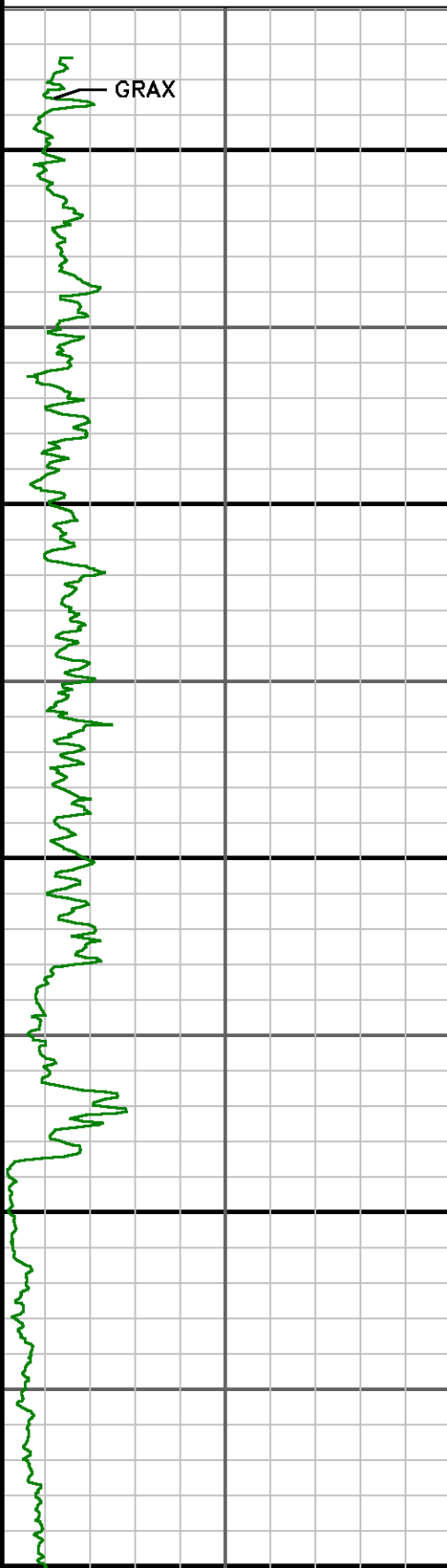
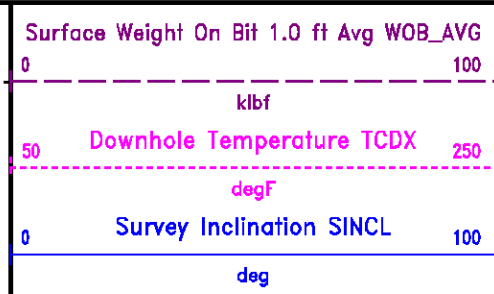
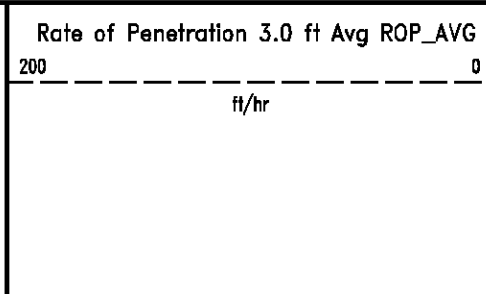
Baker Hughes INTEQ does not guarantee the accuracy or correctness of interpretations provided in or from this log. Since all interpretations are opinions based on measurements, Baker Hughes INTEQ shall under no circumstances be held responsible for consequential damages or any other loss, costs, damages or expenses incurred or sustained in connection with the use of any such interpretations. Baker Hughes INTEQ disclaims all expressed and implied warranties related to its service which is governed by Baker Hughes INTEQ's standard terms and conditions.



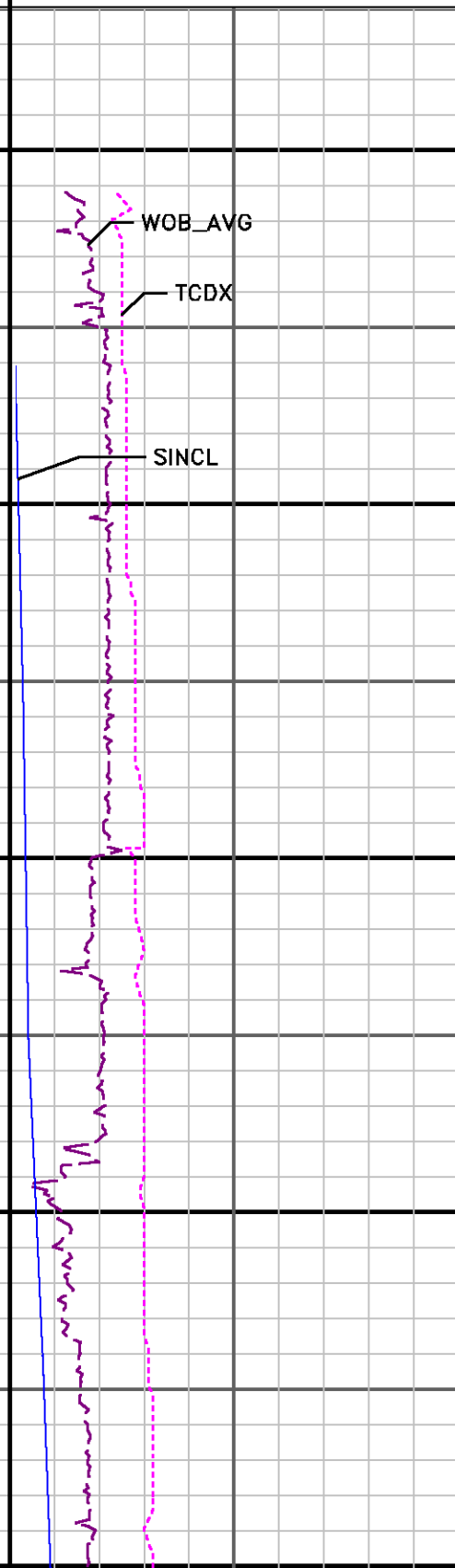
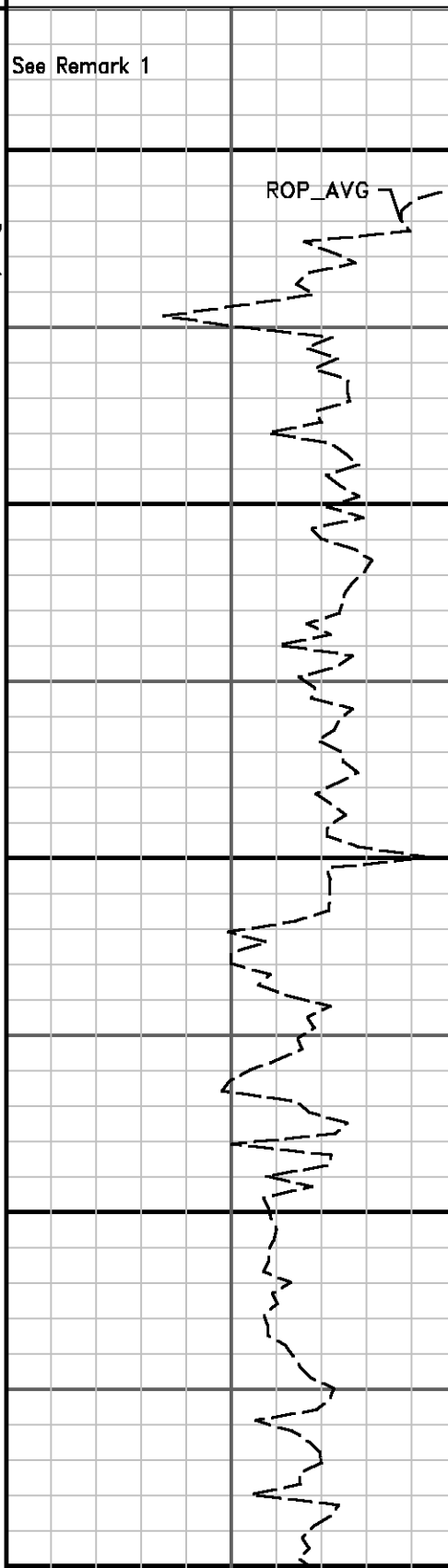
Company : Breitburn Florida, LLC
Well : Collier Land & Cattle No. 27-8HL
Interval : 5460.00 - 12250.00 feet



MD feet 1:600



5500
> Run 1
5600
5700
5800
5900



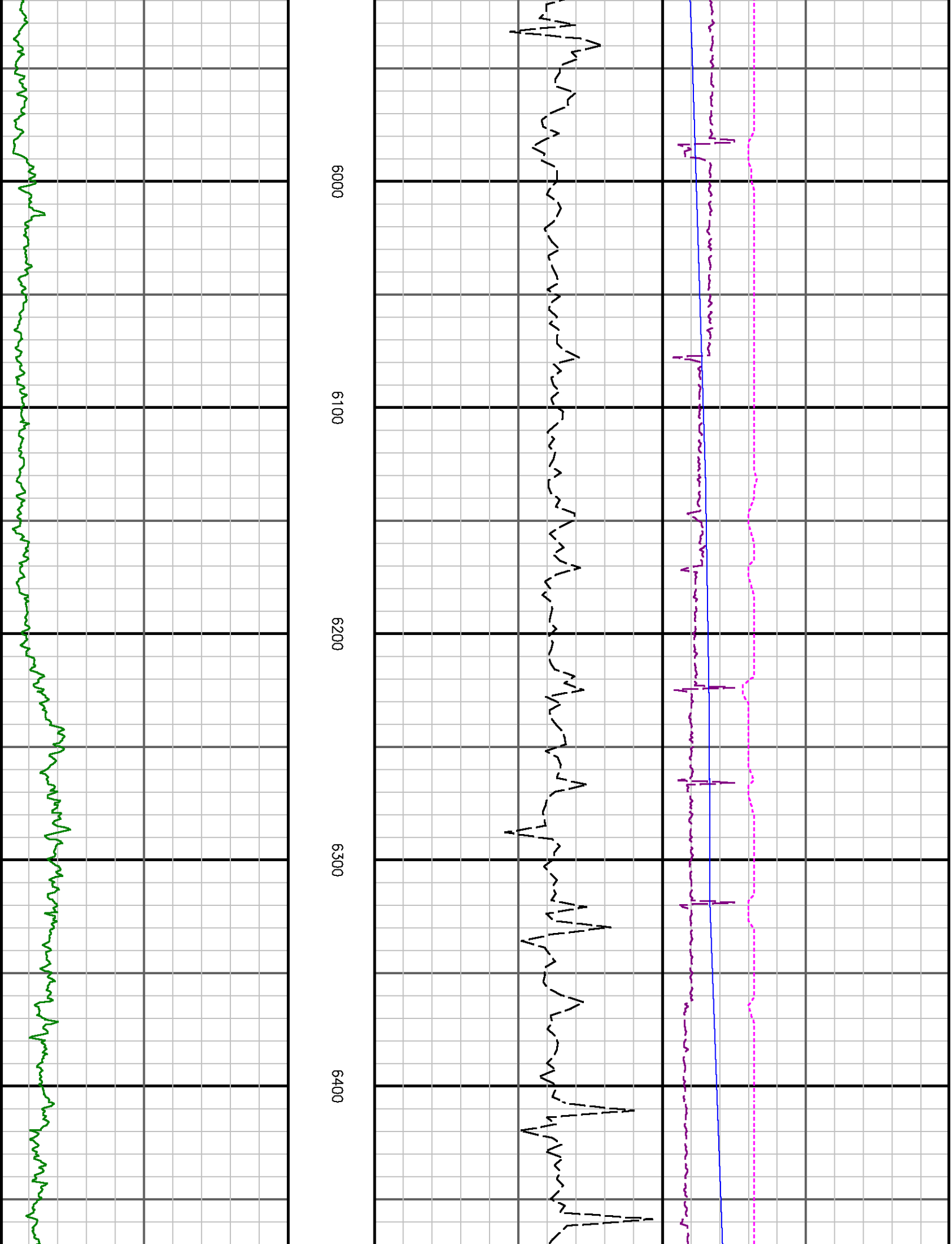
See Remark 1

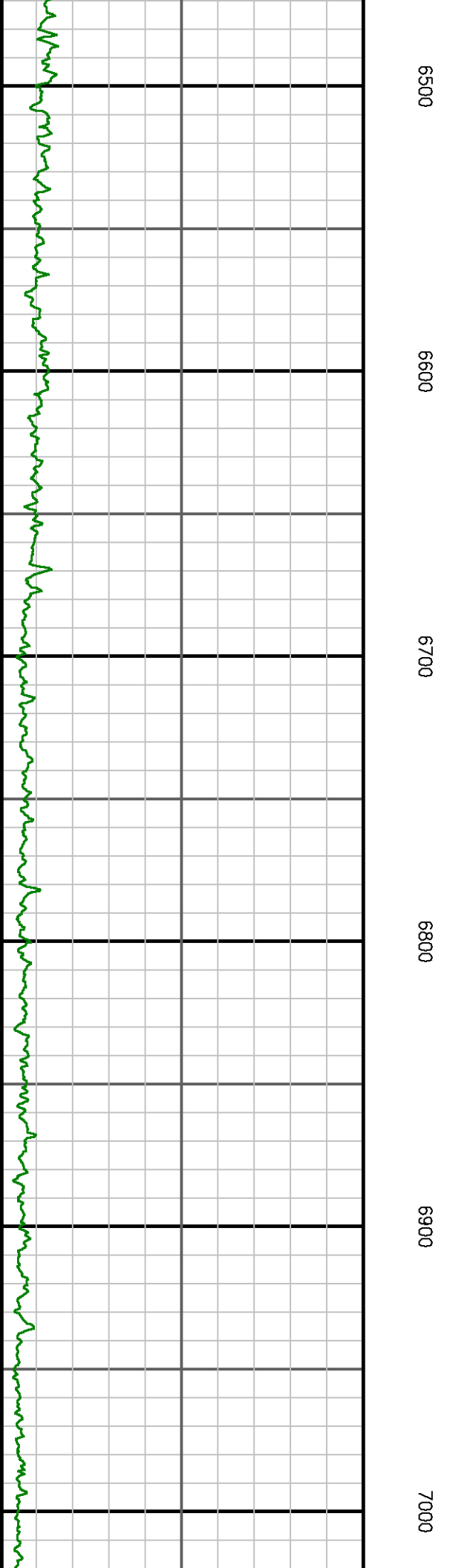
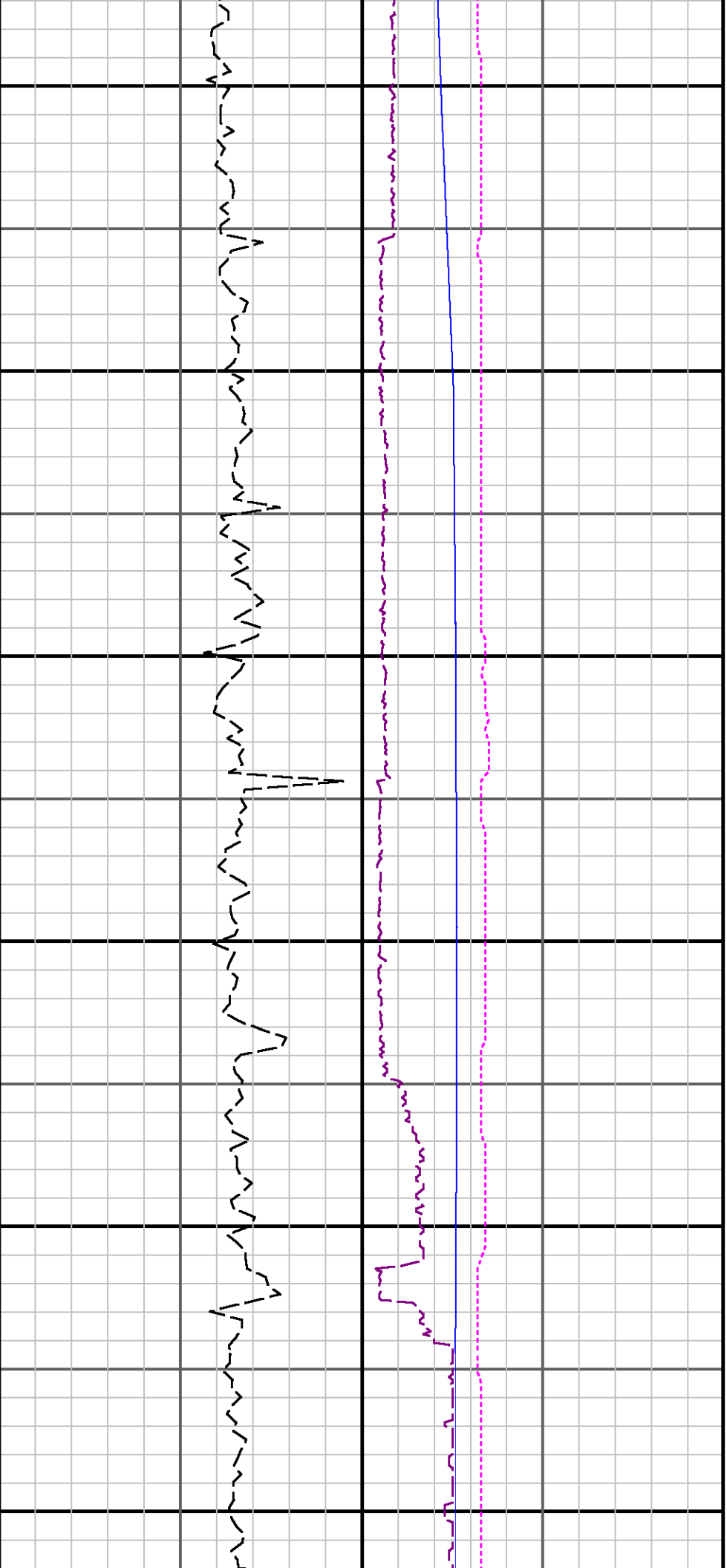
ROP_AVG

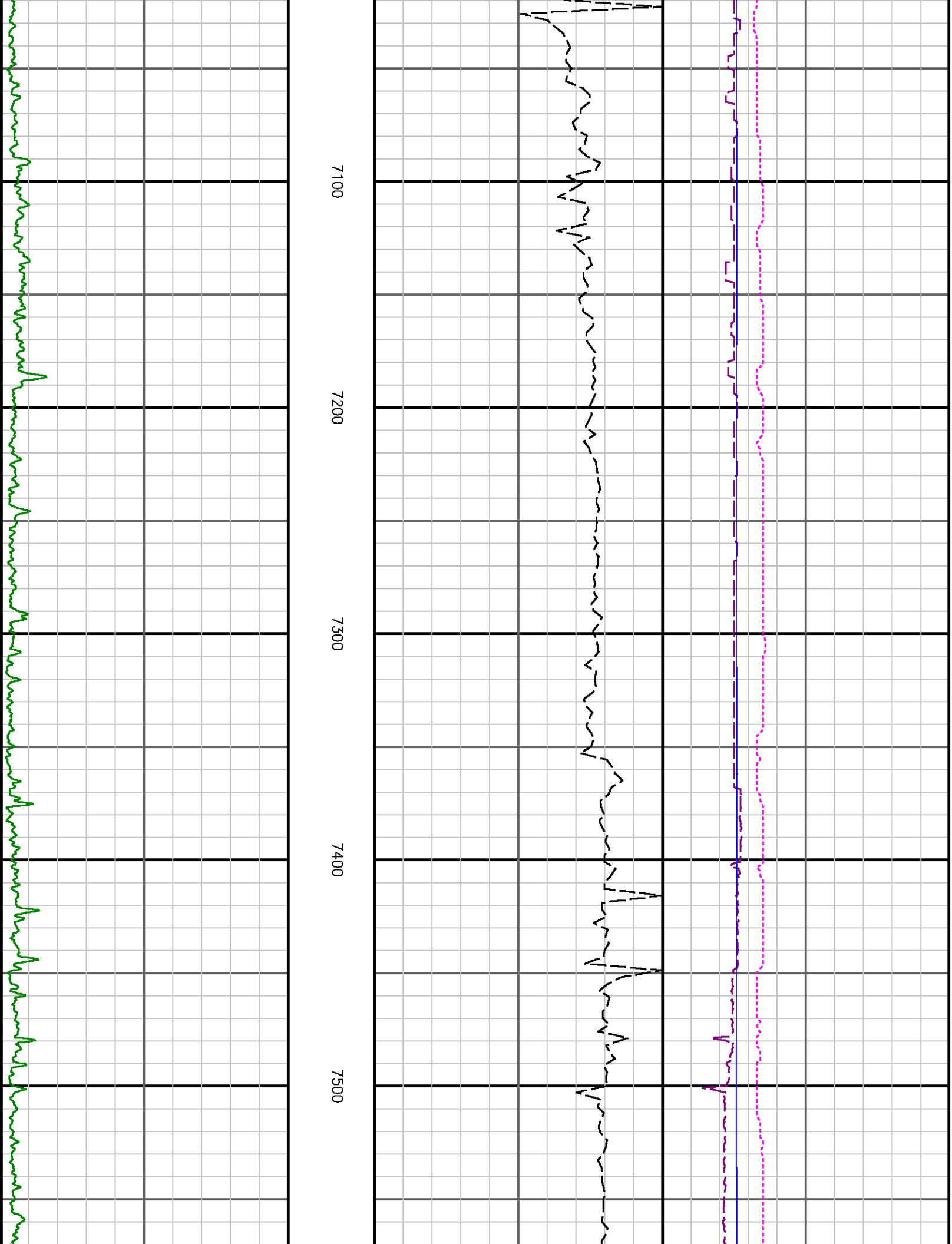
WOB_AVG

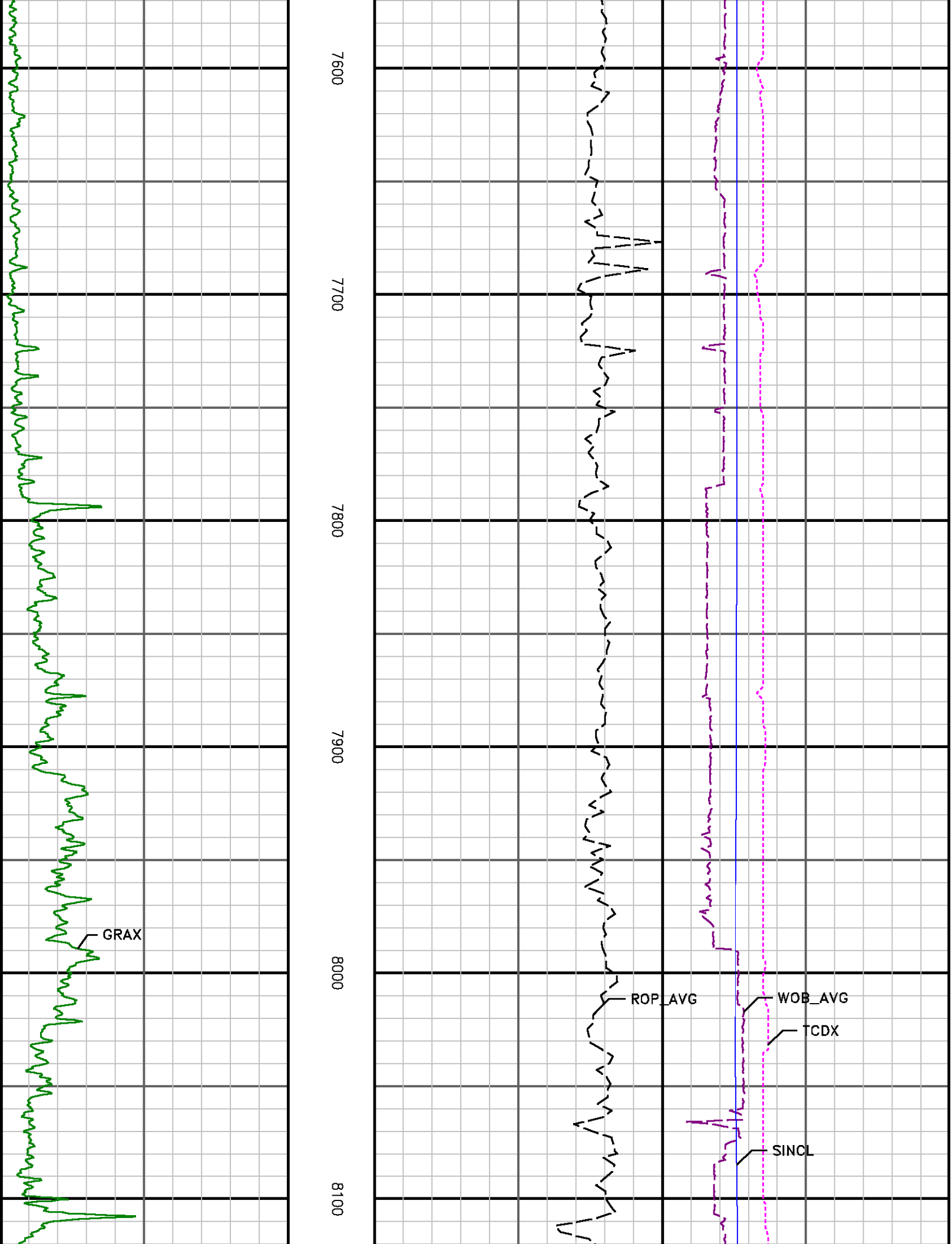
TCDX

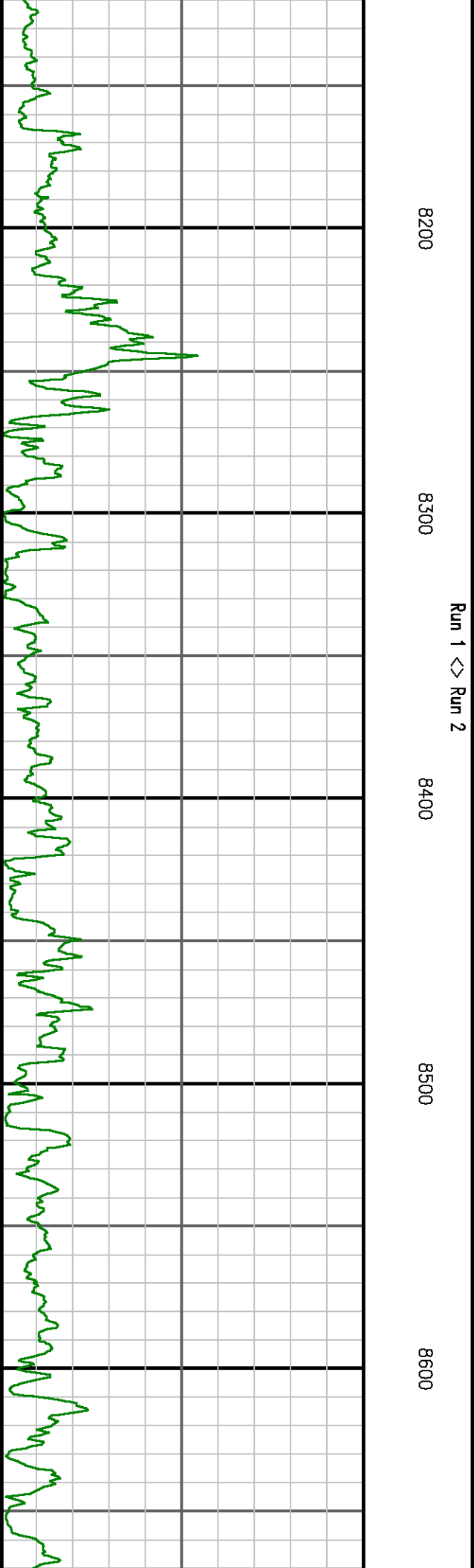
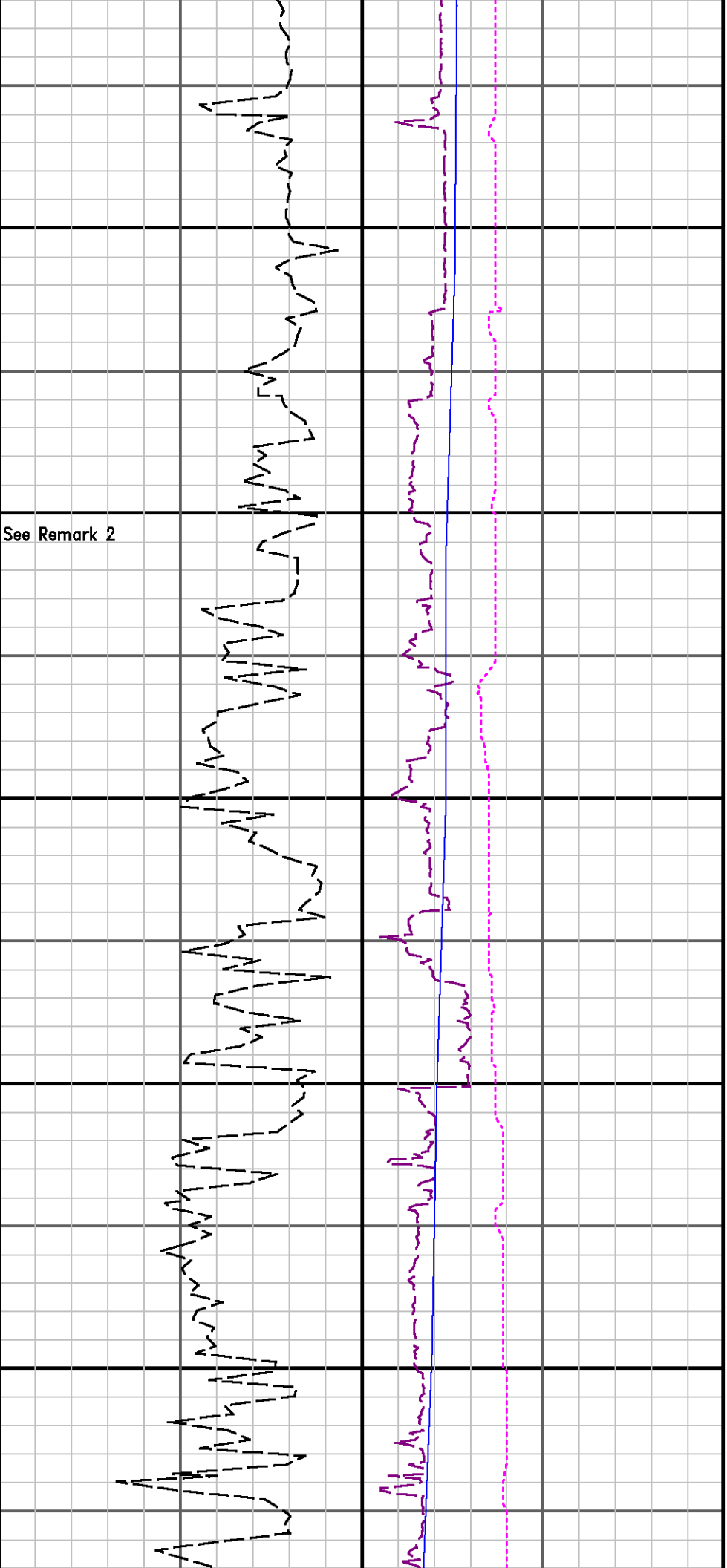
SINCL

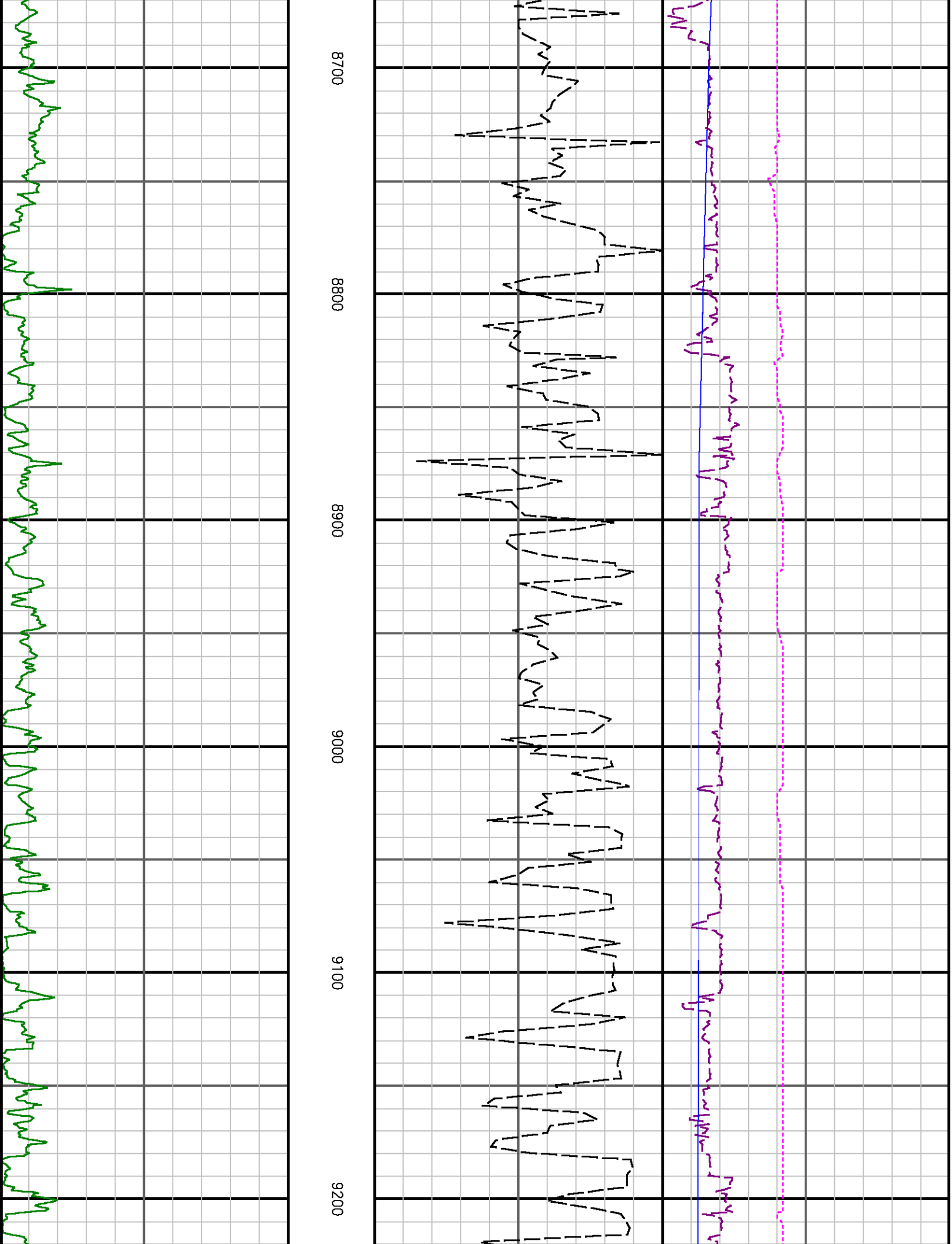


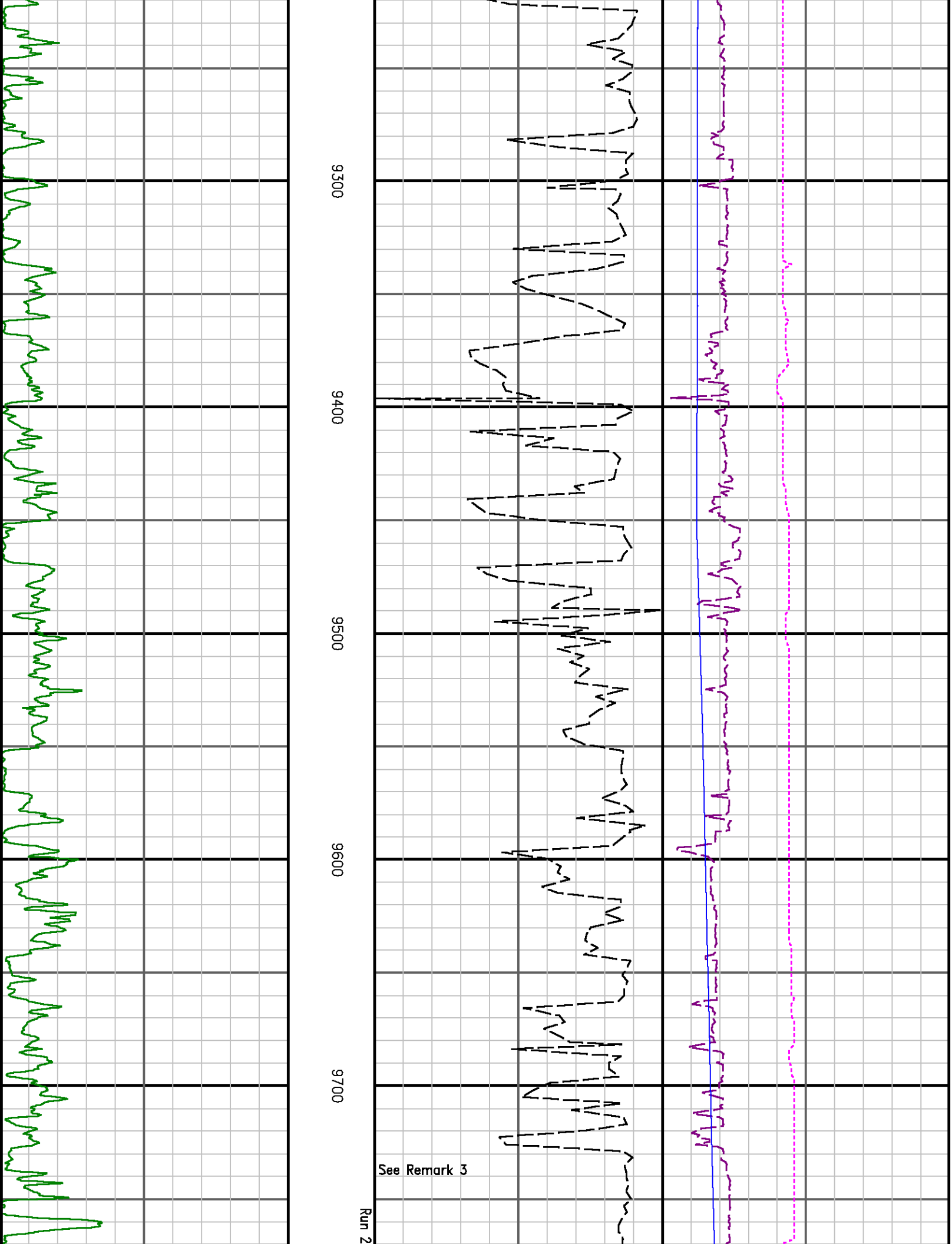












9300

9400

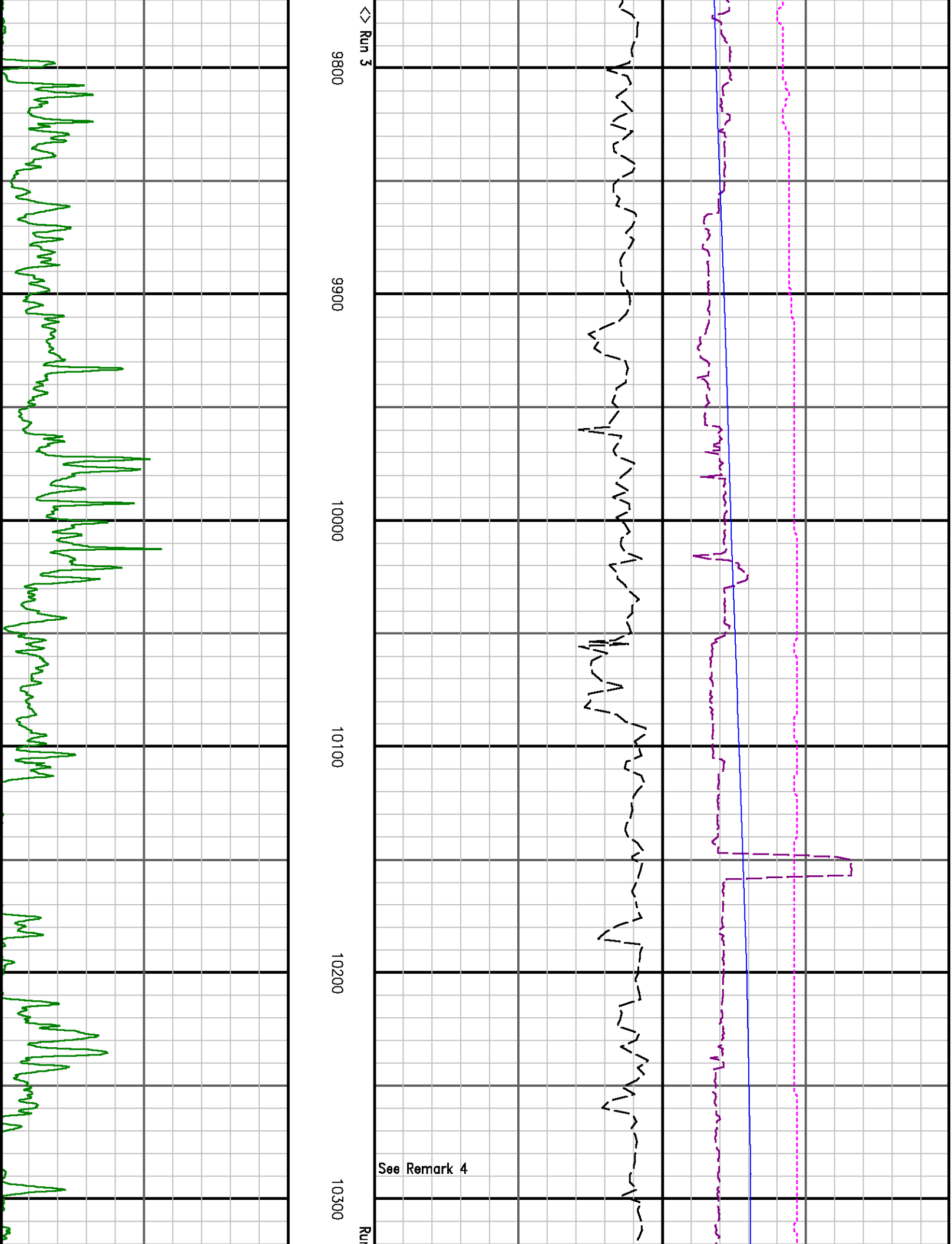
9500

9600

9700

See Remark 3

Run 2



13 <> Run 4

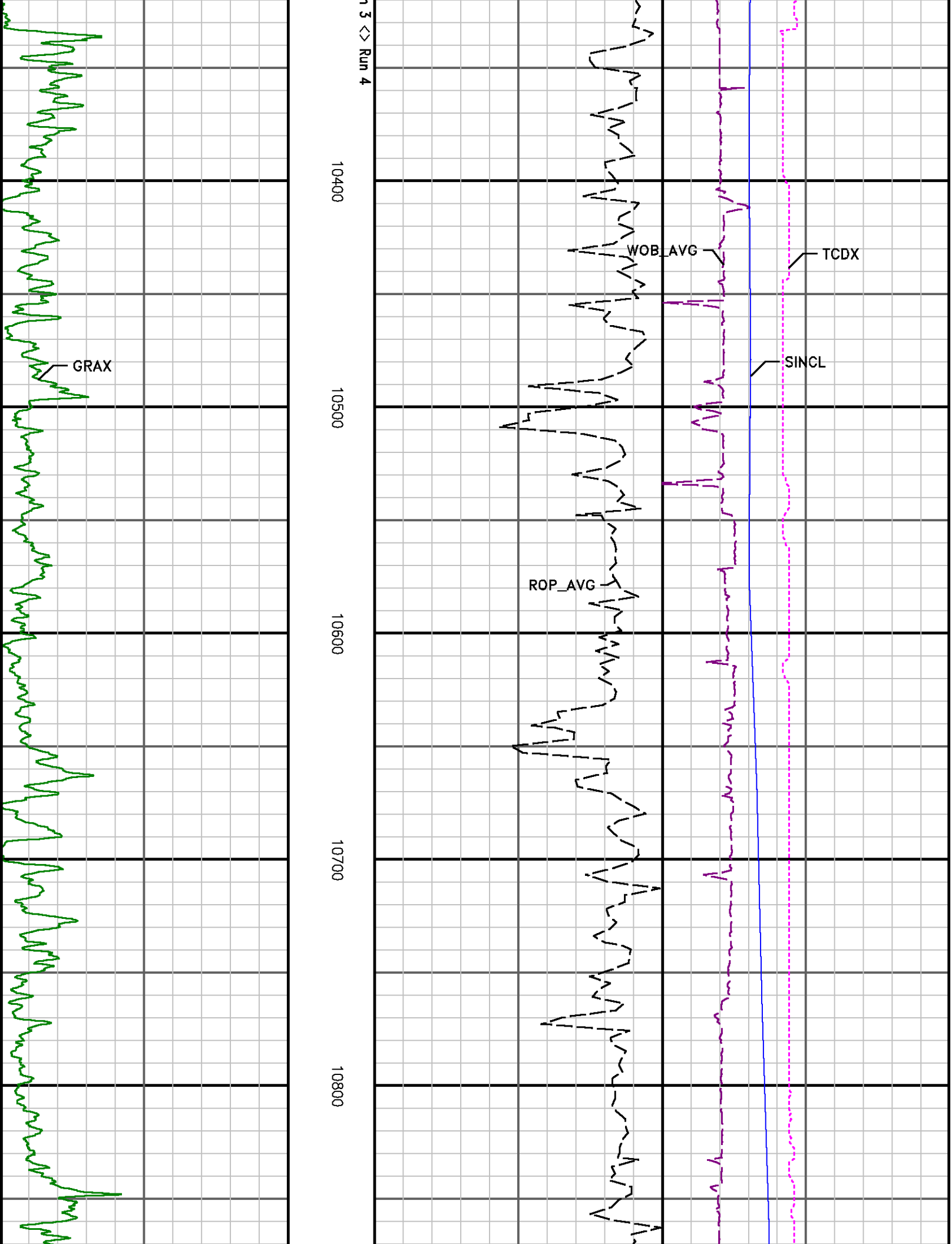
10400

10500

10600

10700

10800





10900

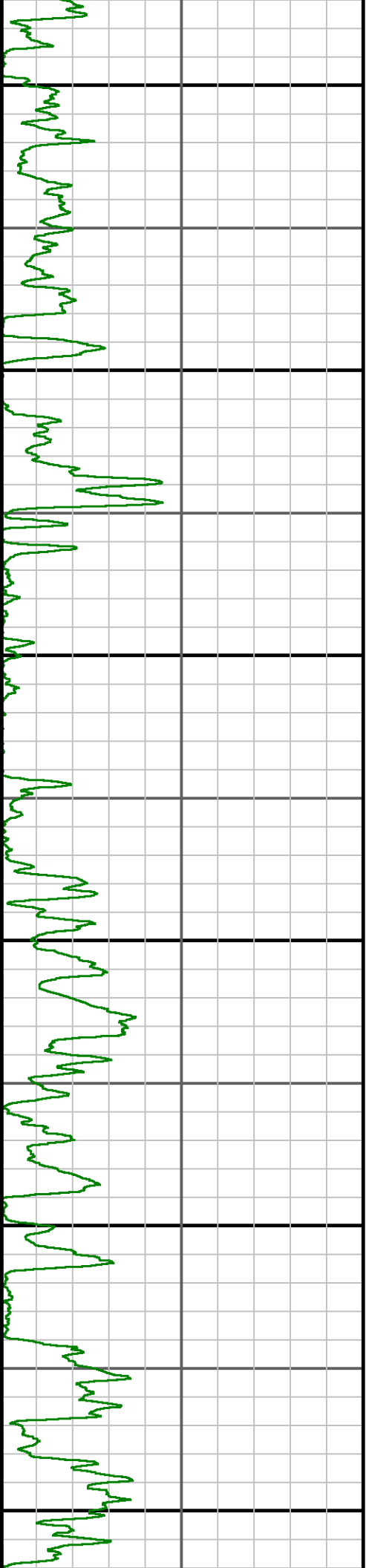
11000

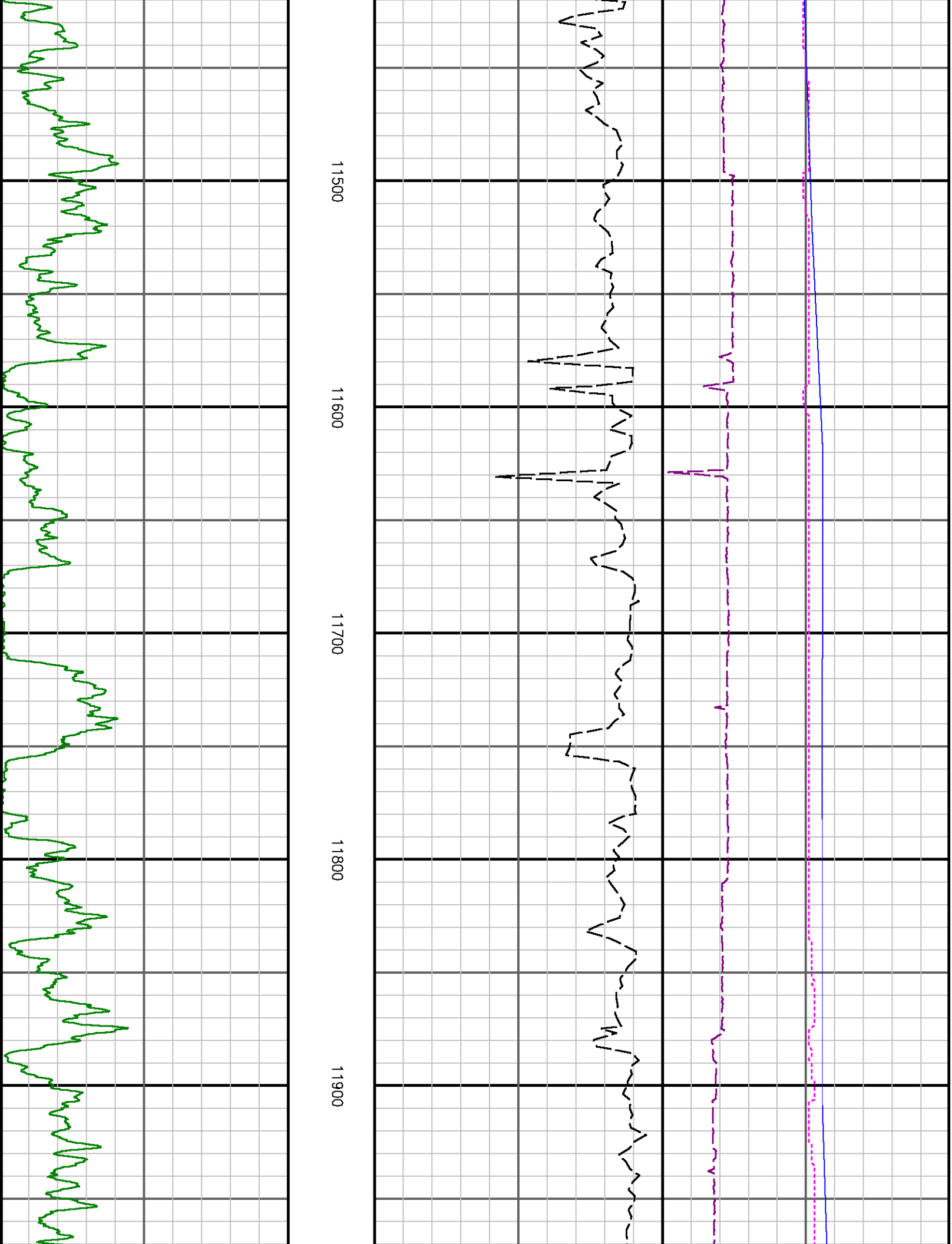
11100

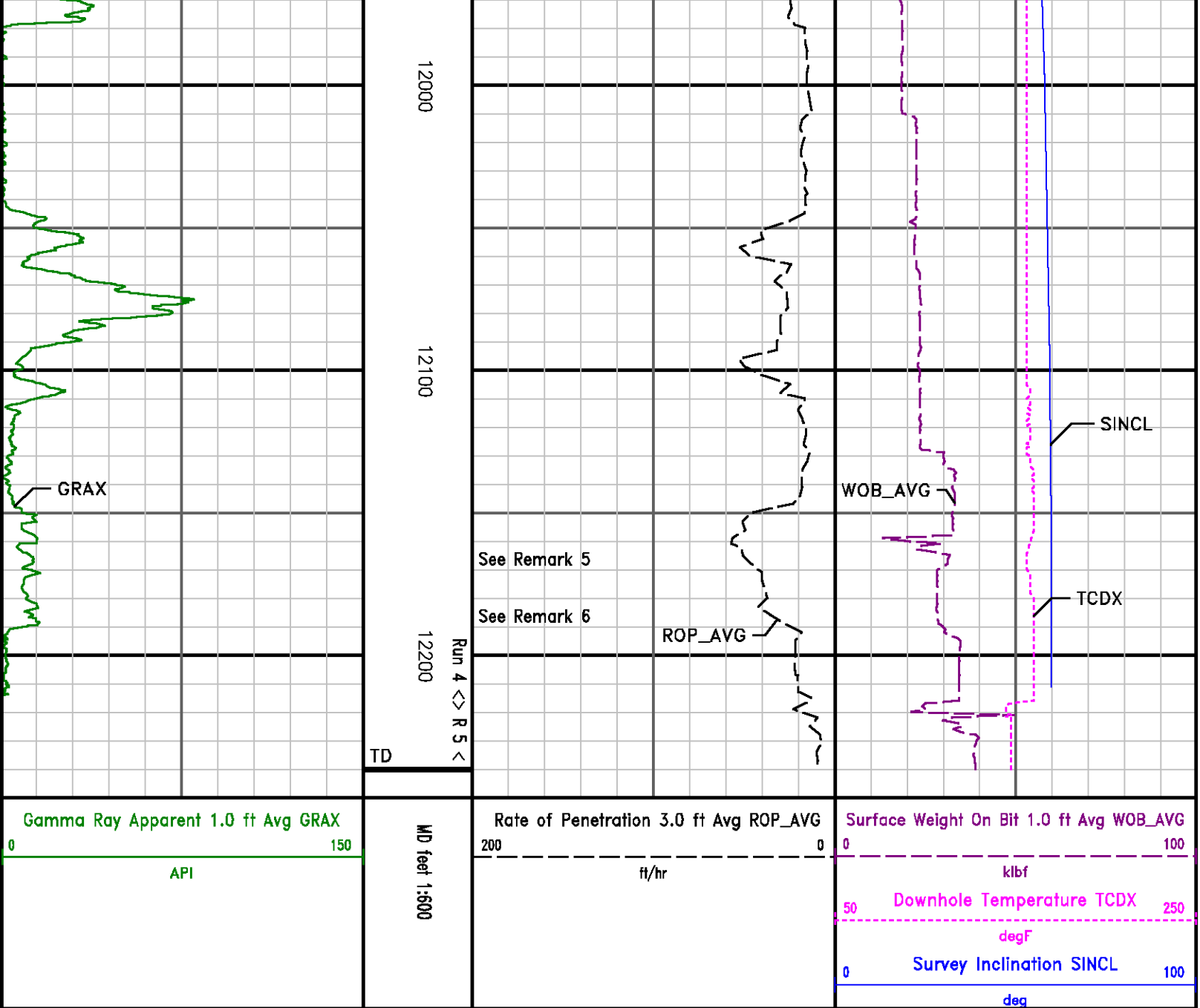
11200

11300

11400







12000

12100

12200

Run 4 <> R 5 <

TD

See Remark 5

See Remark 6

GRAX

ROP_AVG

WOB_AVG

SINCL

TCDX

Gamma Ray Apparent 1.0 ft Avg GRAX

0 150

API

MD feet 1:600

Rate of Penetration 3.0 ft Avg ROP_AVG

200 0

ft/hr

Surface Weight On Bit 1.0 ft Avg WOB_AVG

0 100

klbf

Downhole Temperature TCDX

50 250

degF

Survey Inclination SINCL

0 100

deg