

CLIENT Miami-Dade Water & Sewer Authority Date 9/6/80  
 Well No. I-8 Project No. BC55900.92

Location: State Florida County Dade  
NE 1/4 NW 1/4 NE 1/4 Sec. 21 T. 56  N  S  E  W R. 40

Logged by B. Britt Observer D. Snyder

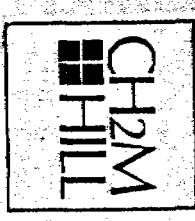
Owner: Miami-Dade Water & Sewer Authority  
 Well: I-8  
 Driller: Alsay-Pippin Corp. Date Drilled: 1980  
 Surface Elevation: 10 ft.  Estimated  Measured Above MSL  
 T.D. Logged 2420' T.D. Driller \_\_\_\_\_  
 Hole Dia. \_\_\_\_\_ From \_\_\_\_\_ To \_\_\_\_\_ Dia. \_\_\_\_\_ From \_\_\_\_\_ To \_\_\_\_\_  
 Casing I. D. 24" From 0 To 2420' Dia. \_\_\_\_\_ From \_\_\_\_\_ To \_\_\_\_\_  
 Finish:  Open hole  Screen  Gravel  Other  
 Water Level: \_\_\_\_\_ ft.  Above  Below MP. at  Above  Below Land Surface  
 Yield: Flow \_\_\_\_\_ gpm Pump \_\_\_\_\_ gpm  
 Drawdown: \_\_\_\_\_ ft. after \_\_\_\_\_ hours pumping @ \_\_\_\_\_ gpm  
 Use:  Dom.  Stock  PS  Ind.  Irr.  Test  
 Heating or cooling  Drainage  Disposal  Obs.

Water Quality:  
 Temp. \_\_\_\_\_ °F; Sp. Cond. \_\_\_\_\_; Iron \_\_\_\_\_ ppm  
 Cl<sup>-</sup> \_\_\_\_\_ ppm; SO<sub>4</sub><sup>-</sup> \_\_\_\_\_ ppm; Total Hardness \_\_\_\_\_ ppm  
 Color \_\_\_\_\_ Odor \_\_\_\_\_ Taste \_\_\_\_\_

Remarks: Tagged cement in annulus at 2274 ft.

Sheet 1 of 694957 ①

- Electric
- Gamma Ray
- Temperature
- Caliper
- Fluid Resistivity
- Fluid Velocity



GEOPHYSICAL WELL SURVEY

Log Scales

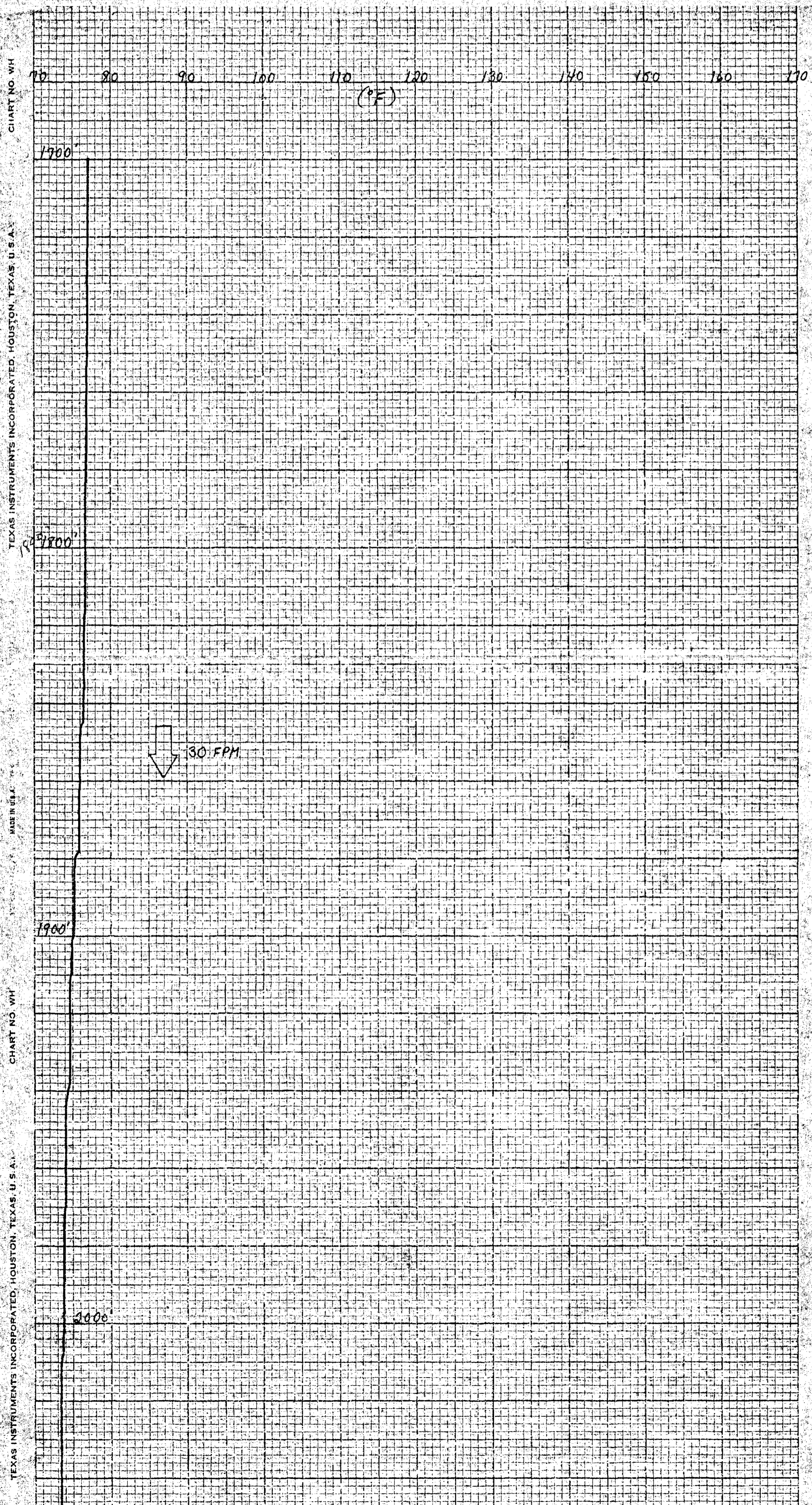
Electric Log SP _____ millivolts/inch Res. _____ ohm-meters/inch Res. _____ ohms/inch	Fluid Resistivity _____ ohm-meters/inch @ _____ °F
Gamma Ray Log _____ Counts/sec/in. Time Constant _____ sec. Logging speed _____ FPM	Fluid Velocity _____ Counts/min/inch _____ FPM (continuous) Q = _____ gpm
Temperature _____ °F to _____ °F Logging speed <u>30</u> FPM	Caliper _____ inches to _____ inches Logging speed _____ FPM

Water Samples  
 Depths sampled: \_\_\_\_\_

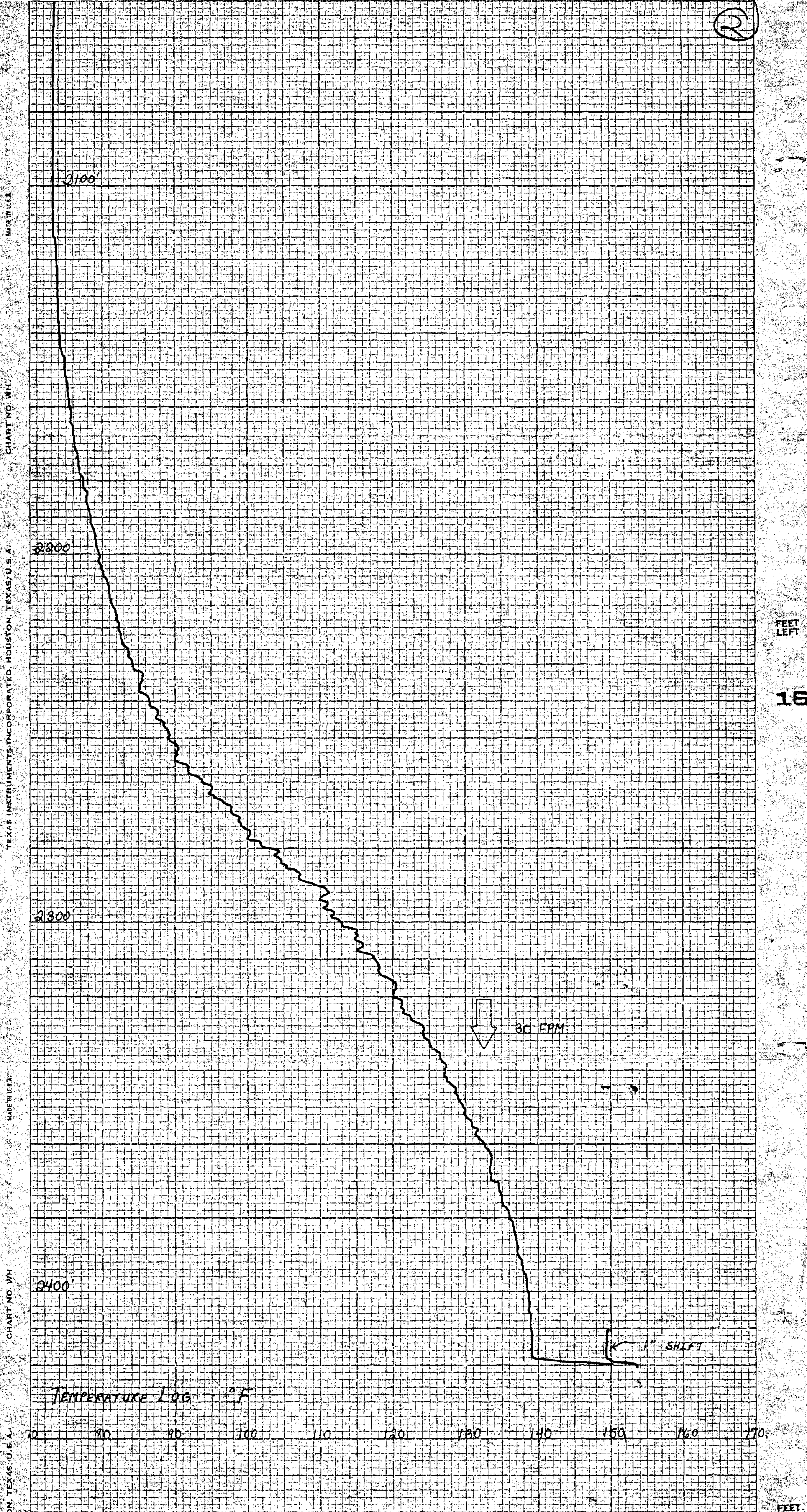


CH2M HILL  
 Water Resources Division  
 P.O. Box 1647  
 Gainesville, Florida 32602  
 (904) 377-2442

FE 1029



2



MADE IN U.S.A. CHART NO. WH TEXAS INSTRUMENTS INCORPORATED, HOUSTON, TEXAS, U.S.A. MADE IN U.S.A. CHART NO. WH DN, TEXAS, U.S.A.

FEET LEFT

16

FEET

TEMPERATURE LOG - °F

70 80 90 100 110 120 130 140 150 160 170

2100'

2200

2300

2400'

30 FPM

1" SHIFT