



YOUNGQUIST BROTHERS, Inc
GEOPHYSICAL LOGGING DIVISION

FLUID CONDUCTIVITY TEMPERATURE LOG

Company CITY OF CAPE CORAL
Well L1042
Field HERMOSA
County LEE
State FL

Company CITY OF CAPE CORAL
Well L1042
Field HERMOSA
County LEE
State FL

RECEIVED - D.E.P.
AUG 03 2008
SOUTH DISTRICT

Location
Permanent Datum
Log Measured From
Drilling Measured From
Elevation
Other Services
SEE COMMENTS

Date	23-JUNE-2008				
Run Number	TWO				
Depth Driller	1201'				
Depth Logger	1202'				
Bottom Logged Interval	1202'				
Top Log Interval	SURFACE				
Open Hole Size	11"				
Type Fluid	WATER				
Density / Viscosity	N/A				
Max. Recorded Temp.	N/A				
Estimated Cement Top	N/A				
Time Well Ready	ON ARRIVAL				
Time Logger on Bottom	1200				
Equipment Number	103				
Location	FT MYERS				
Recorded By	FULLER				
Witnessed By	B. FAIT				
Borehole Record		Borehole Record			
Run Number	Bit	From	To	Run No.	Bit
ONE	12"	SURFACE	701'		
TWO	11"	CASING	1202'		
Casing Record		Casing Record			
Surface String	Size	Wgt/Ft		Bottom	
1st String	12"	.375		501'	
Production String					
Inner					

<<< Fold Here >>>

All interpretations are opinions based on inferences from electrical or other measurements and we cannot and do not guarantee the accuracy or correctness of any interpretation, and we shall not, except in the case of gross or willful negligence on our part, be liable or responsible for any loss, costs, damages, or expenses incurred or sustained by anyone resulting from any interpretation made by any of our officers, agents or employees. These interpretations are also subject to our general terms and conditions set out in our current Price Schedule.

Comments

X-Y CALIPER
GAMMA RAY
DUAL INDUCTION
BOREHOLE COMPENSATED SONIC
FLOW
VIDEO

Entered into
OCULUS
South District

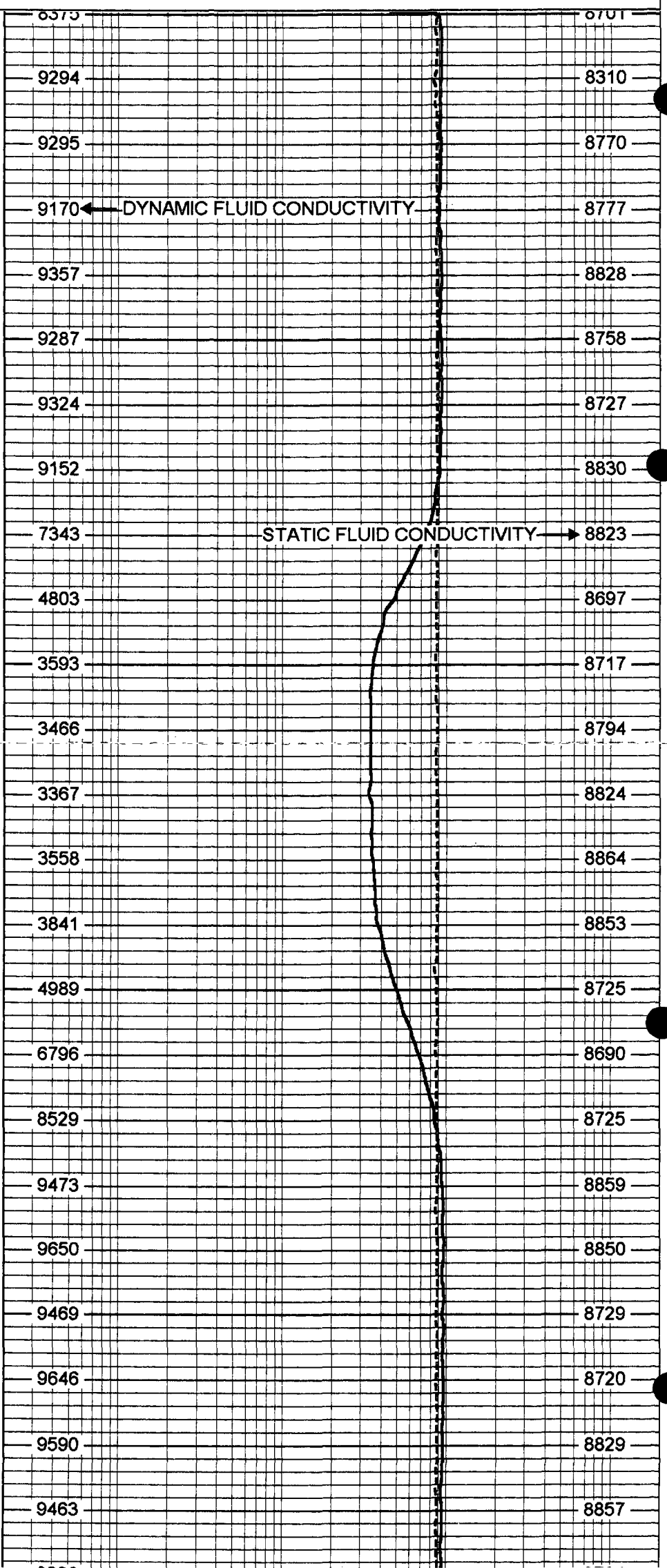
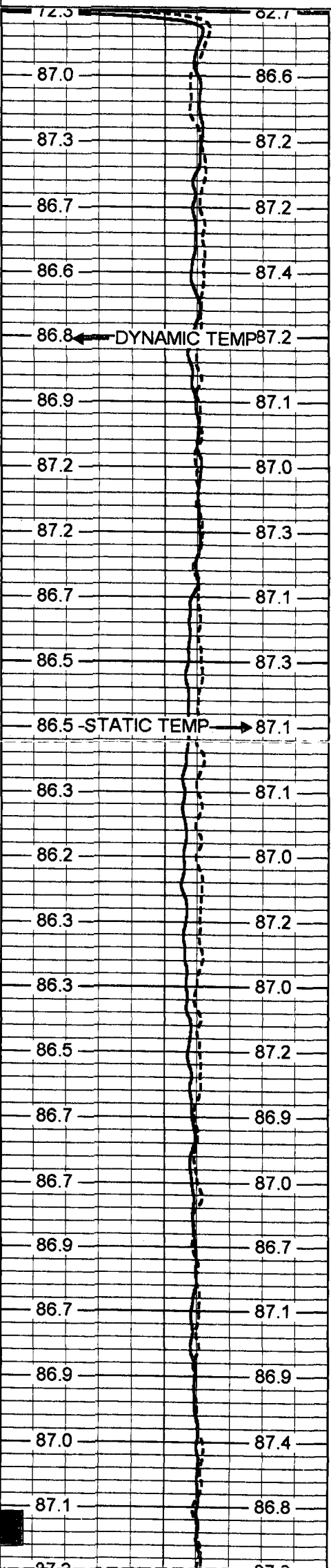


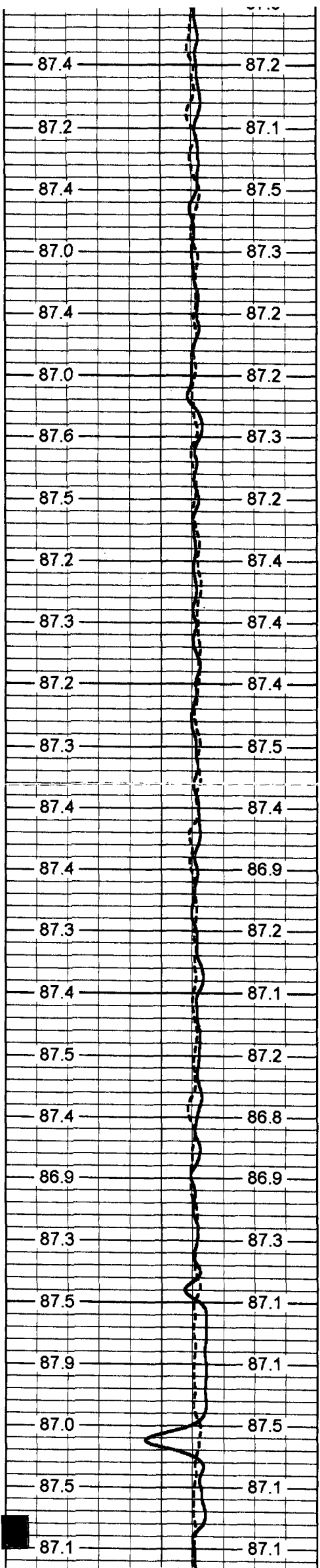
MERGED FCT

Database File: divrsfid.db
Dataset Pathname: hermosa/L1042/run2/pass4
Presentation Format: frt_mg
Dataset Creation: Wed Jul 23 13:08:11 2008 by Log 6.2_B4
Charted by: Depth in Feet scaled 1:240

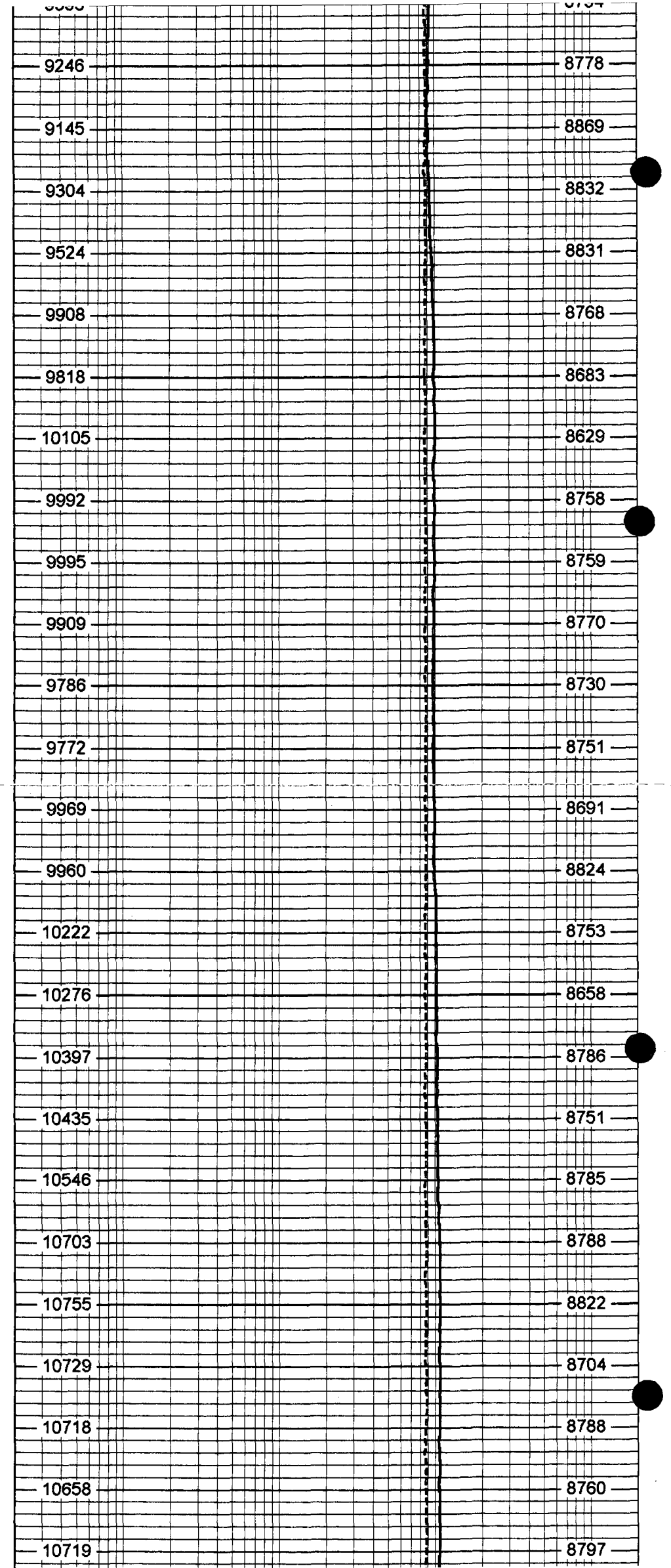
75 DYNAMIC TEMP (degF) 95
75 STATIC TEMP (degF) 95

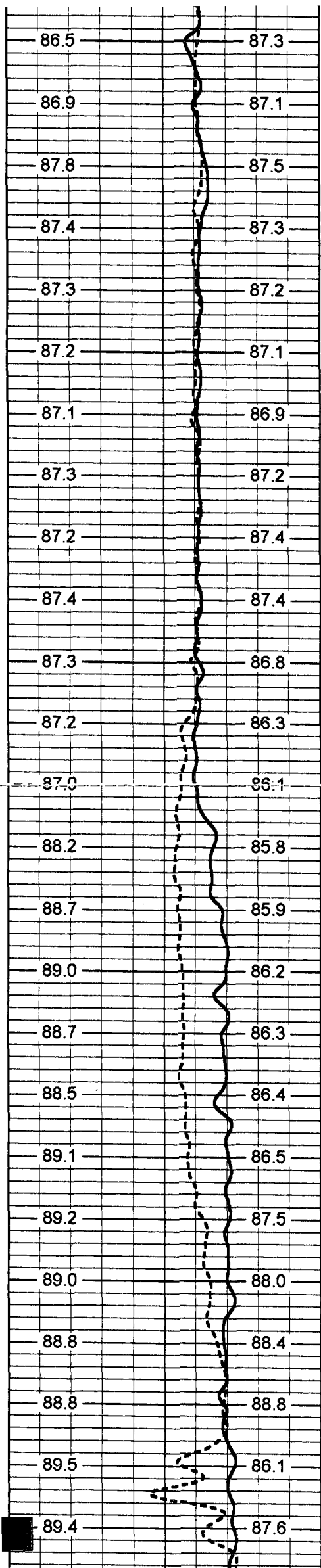
20 DYNAMIC FLUID CONDUCTIVITY (uS) 200000
20 STATIC FLUID CONDUCTIVITY (uS) 200000



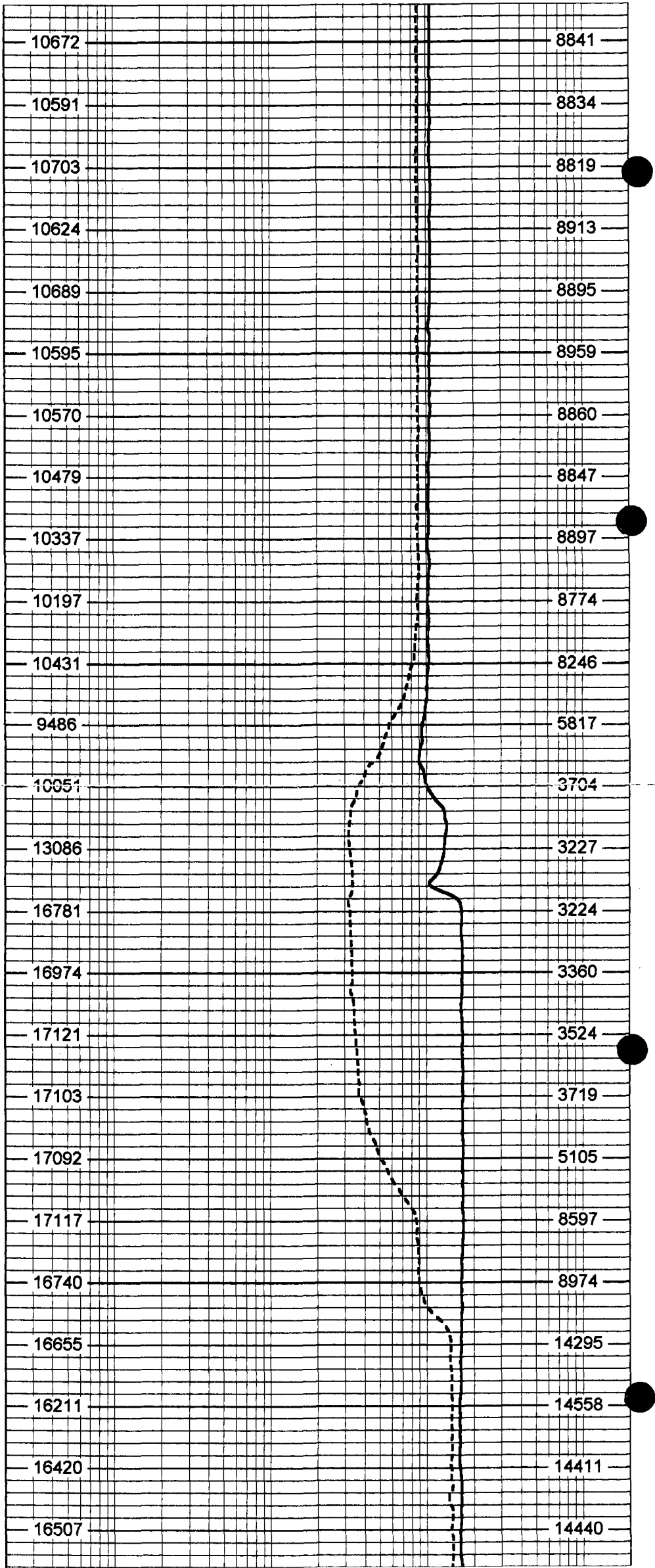


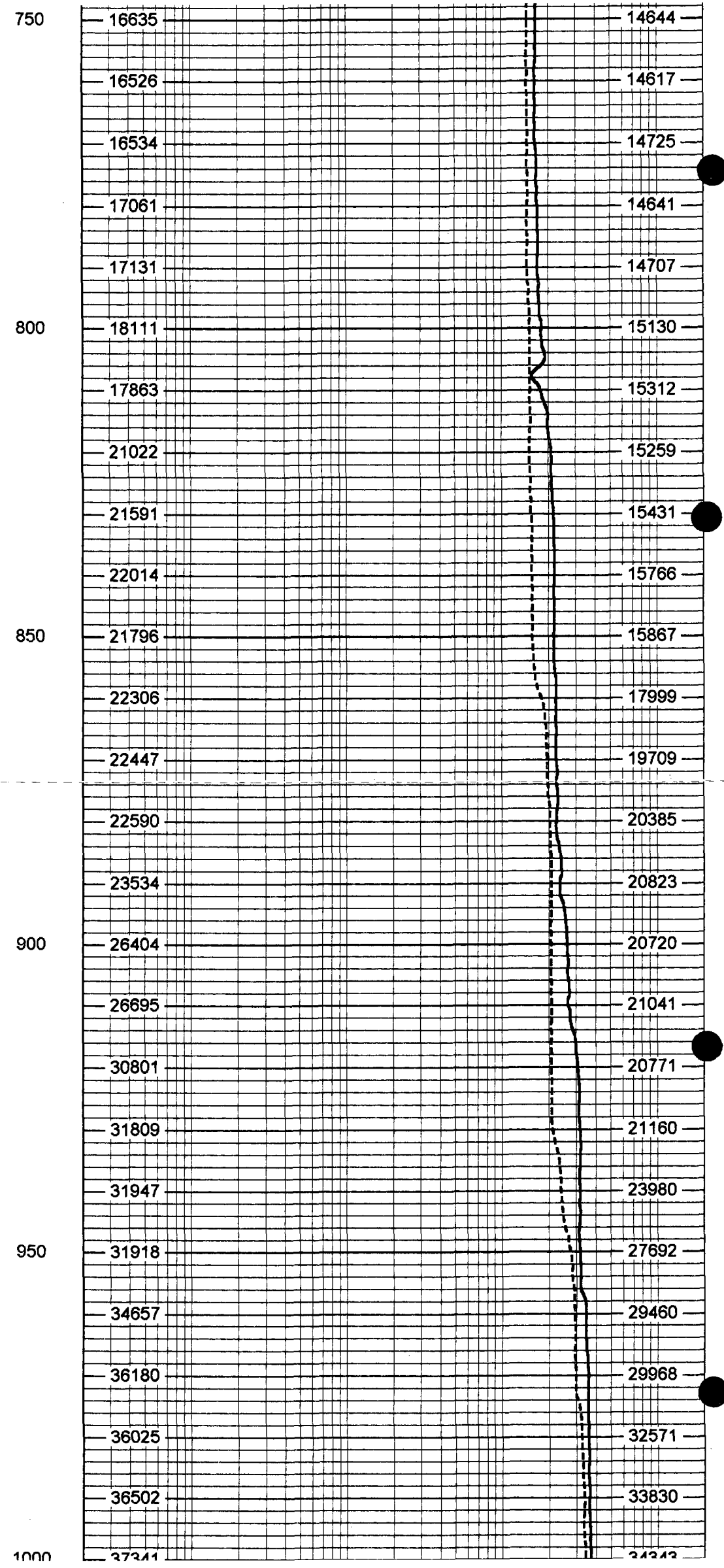
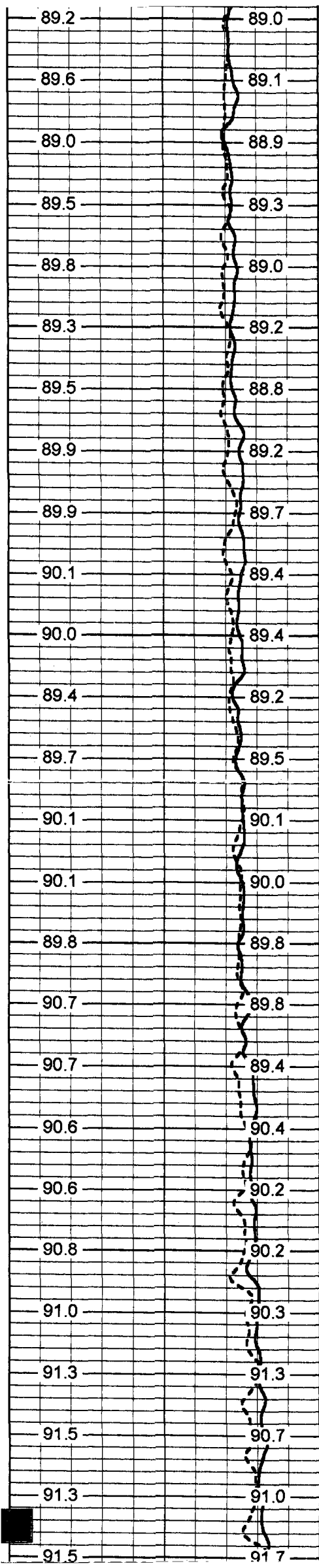
250
300
350
400
450

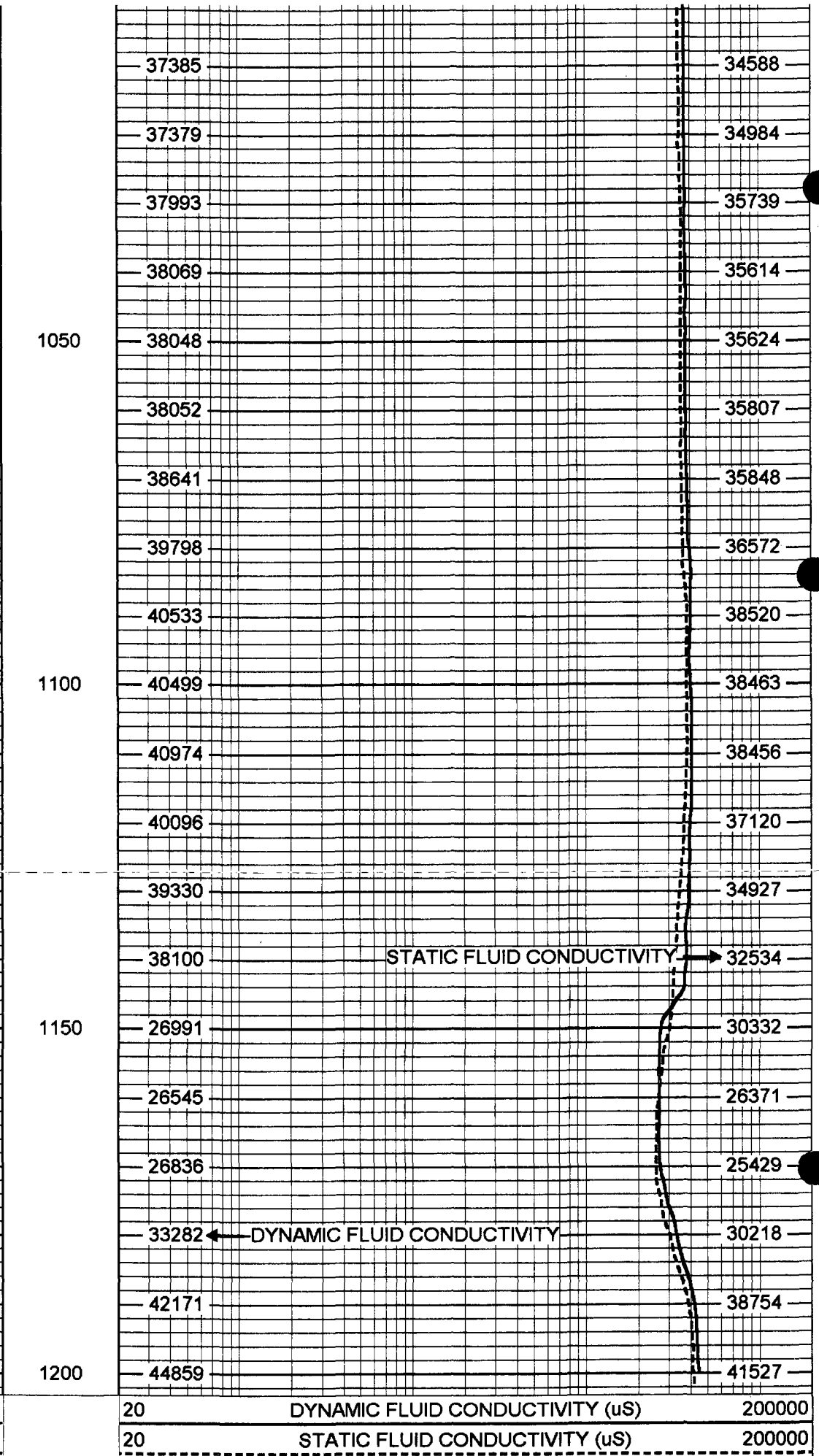
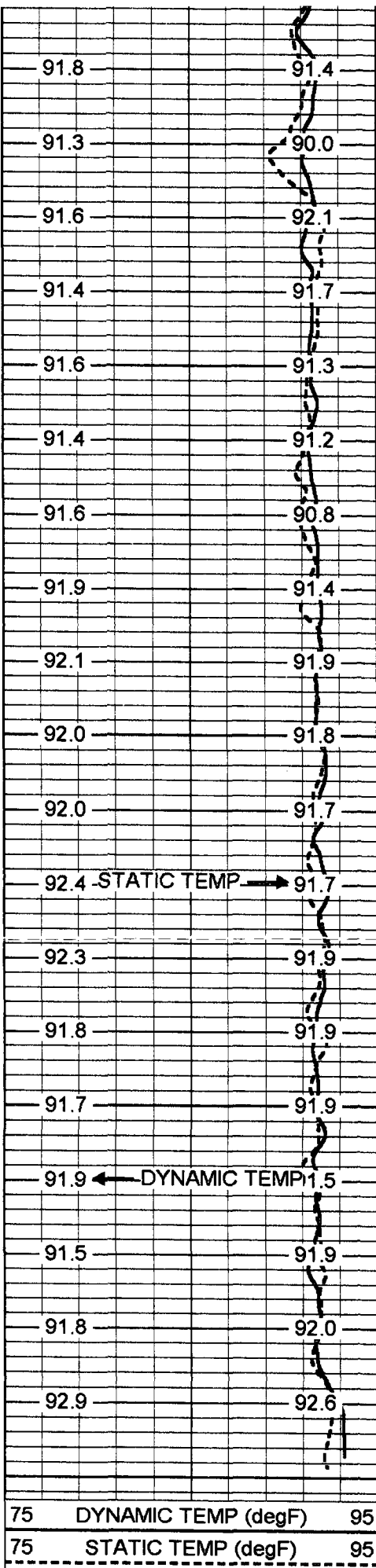




500
550
600
650
700

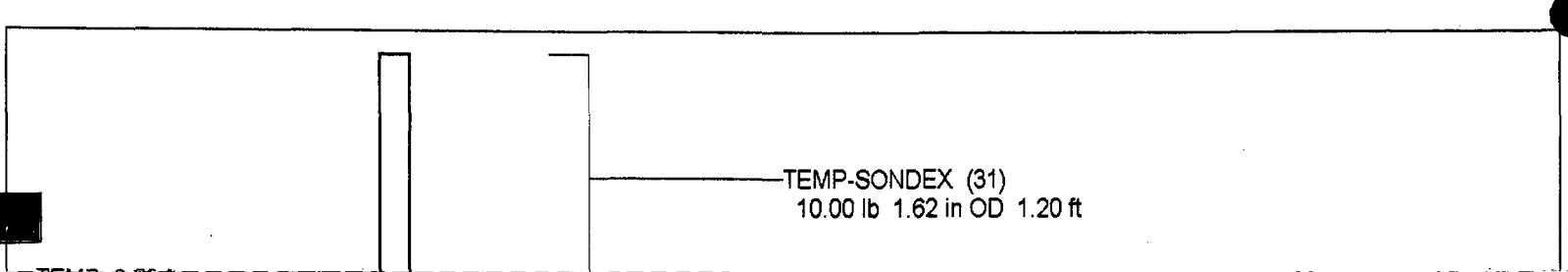






75 DYNAMIC TEMP (degF) 95
 75 STATIC TEMP (degF) 95

20 DYNAMIC FLUID CONDUCTIVITY (uS) 200000
 20 STATIC FLUID CONDUCTIVITY (uS) 200000



FRES 0.50 ft



FRT-SONDEX (31)
10.00 lb 1.69 in OD 0.60 ft

Dataset: hermosa/L1042/run2/pass4
Total Length: 1.80 ft
Total Weight: 20.00 lb
O.D.: 1.69 in

FRT Calibration Report

Serial Number: 31
Tool Model: SONDEX
Performed: Mon Jun 09 10:53:41 2008

Point #	Reading		Reference
1	31.165	cps	1000.000
2	167.193	cps	10000.000
3	415.824	cps	25000.000
4	918.476	cps	50000.000
5		cps	
6		cps	

Temperature Calibration Report

Serial Number: 31
Tool Model: SONDEX
Performed: Mon Jun 09 10:53:33 2008

Point #	Reading		Reference	
1	152.99	cps	39	degF
2	330.989	cps	82	degF
3	688.237	cps	157	degF