



**FLUID CONDUCTIVITY
TEMPERATURE
LOG**

Company **Diversified Drilling Corporation**
Well **CPS2 LHMW (SMW-1) L1035**
Field **Cape Coral**
County **Lee** State/Prv **Florida**

Location
Cape Coral ASR Project - CPS2 Site
NE Corner of SW 5th PL & Mohawk PKWY
Cape Coral Water Utilities Department-MWH

Permanent Datum **G.L.**
Log Measured From **G.L.**
Drilling Measured From **G.L.**

Other Services
XY/GR/DIL
FCT/BHC
FLOW/DHTV
Elevation
G.L.

Company **Diversified Drilling Corp.**
Well **CPS2 LHMW (SMW-1) L1035**
Field **Cape Coral**
County **Lee**
State/Prv **Florida**

Date **25-APR-2008**

| | | |
|------------------------|---------------------|--------------------------------|
| Run Number | TWO | |
| Depth Driller | 615' | |
| Depth Logger | 615' | |
| Bottom Logged Interval | 615' | |
| Top Log Interval | 450' | |
| Open Hole Size | 4.5" | |
| Type Fluid | H2O | |
| Density / Viscosity | N/A/N/A | |
| Max. Recorded Temp. | see FCT down | |
| Estimated Cement Top | NA | |
| Time Well Ready | 08:30 4/25/08 | |
| Time Logger on Bottom | 08:45 4/25/08 | |
| Equipment Number | MVGSS-1 | |
| Location | Ft. Myers | |
| Recorded By | S. Miller/C. Miller | |
| Witnessed By | J. Cook/LEWST | |
| Run Number | Borehole Record | Tubing Record |
| ONE | Bit From To | Size Weight From To |
| TWO | 4.5" 515' 615' | |
| Casing Record | Size | Wgt/Ft Top Bottom |
| Surface String | 20" | 375" WT SURFACE SURFACE 50' |
| Prot. String | 6" PVC | 6" ID SURFACE 515' |
| Production String | | |
| Liner | | 6x-pd-flas CC-L103x |
| Invoice No. | 2008100 | P.O. # Job No. * FINAL PRINT * |

<<< Fold Here >>>

All interpretations are opinions based on inferences from electrical or other measurements and we cannot and do not guarantee the accuracy or correctness of any interpretation, and we shall not, except in the case of gross or willful negligence on our part, be liable or responsible for any loss, costs, damages, or expenses incurred or sustained by anyone resulting from any interpretation made by any of our officers, agents or employees. These interpretations are also subject to our general terms and conditions set out in our current Price Schedule.

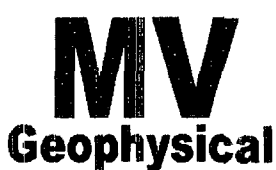
Comments

STATIC and DYNAMIC DOWN passes were performed.
Cw=43,760 uS/cm @ 92.7 degF (Dynamic Sample). Q =~120 gpm.
FLUID RESISTIVITY CALIBRATION REPORT (Performed: 12-APR-08 14:45)

| | |
|--------|---------|
| uS/cm | CPS |
| 2023.6 | 2985.71 |
| 4402.1 | 2702.45 |
| 8828.1 | 2403.14 |

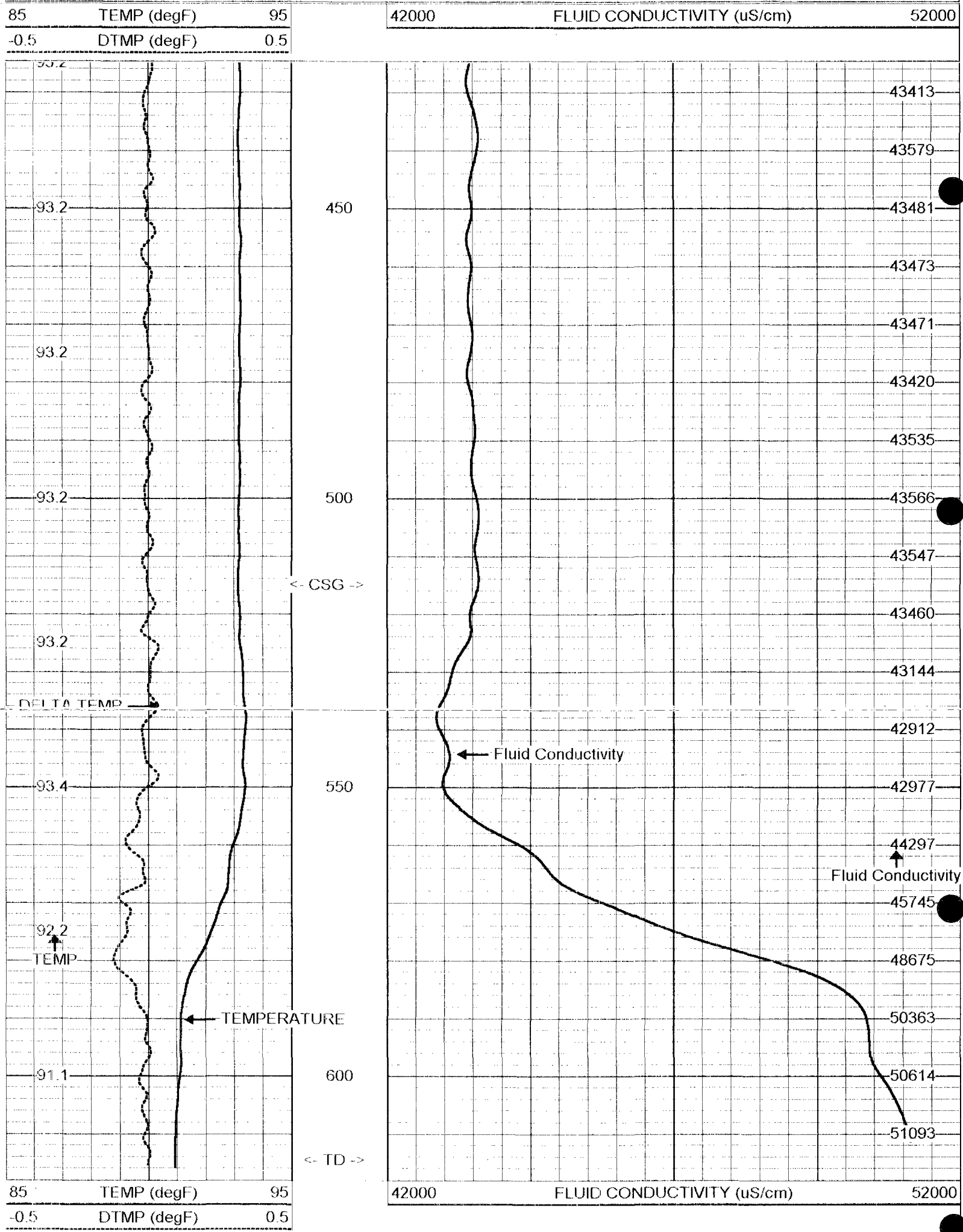
TEMPERATURE CALIBRATION REPORT (Performed: 12-APR-08 14:30)

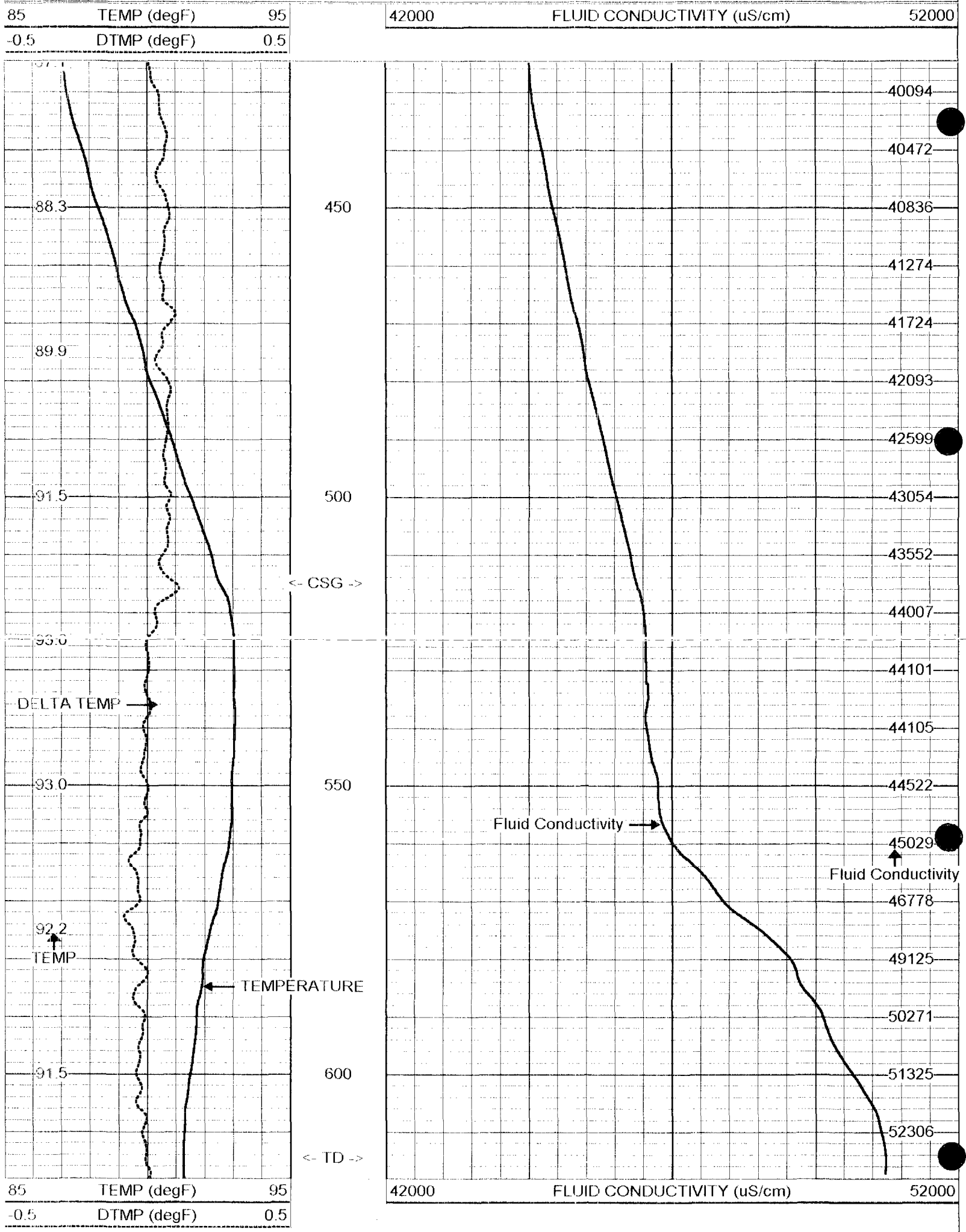
| | |
|-------|--------|
| DEG-F | CPS |
| 37.8 | 142.15 |
| 143.7 | 2685.4 |



DYNAMIC FCT DOWN

Database File: cc-l103x.db
Dataset Pathname: run2/DFCT
Presentation Format: fctl1035.prs
Dataset Creation: Fri Apr 25 16:33:35 2008
Charted by: Depth in Feet scaled 1-240





CCL 4.46 ft

CCL-MVGS 1.9 (MV01) 8.00 lb 1.90 in OD 1.33 ft

GR#2 1.15 ft

GR #2 -RTSB (MV01B) 10.00 lb 1.90 in OD 3.33 ft

TEMP 0.10 ft

TEMP-RTS (MV01) 2.00 lb 1.90 in OD 0.46 ft

| | |
|---------------|-------------|
| Dataset: | run2/pass21 |
| Total Length: | 5.12 ft |
| Total Weight: | 20.00 lb |
| O.D. | 1.90 in |

RECEIVED - DEP.
 MAR 01 2004
 SOUTH DAKOTA