

GEOPHYSICAL LOGGING DIVISION

Company: SEACOAST UTILITY AUTHORITY  
 Well: HR IW-1  
 Field: HOOD ROAD W.T.P.  
 County: PALM BEACH  
 State: FL  
 Location: SEC TWP RGE  
 Elevation: KB, DF, GL  
 Date: 5-AUG-2010  
 Run Number: MIT 2010  
 Depth Logger: 3250'  
 Bottom Logged Interval: SURFACE  
 Top Log Interval: 22.5'  
 Open Hole Size: WATER  
 Type Fluid: NA  
 Density/Viscosity: 79F  
 Max Recorded Temp: 1330  
 Estimated Cement Top: 1330  
 Time Well Ready: 1330  
 Time Logger on Bottom: 102  
 Equipment Number: FT MWERS  
 Location: FULLER  
 Recorded By: CATHEY  
 Witnessed By: SCHILLING M

Run Number	Bit	From	To	Run No	From	To
ONE	SURFACE	392'	FIVE	12.25"	CASING	2305"
TWO	SURFACE	272'	SIX	42.5"	CASING	2175'
THREE	SURFACE	1104'	SEVEN	12.25"	CASING	3401'
FOUR	CASING	1197'	EIGHT	25.5825"	CASING	3253'
Casing Record	Size	VAULT	Top	Bottom		
Surface String	54"	375' WT	SURFACE	270'		
Prod. String	44"	375' WT	SURFACE	1000'		
Production String	34"	375' WT	SURFACE	2170'		
Liner	24"	500' WT	SURFACE	2940'		
FRP LINER	16"	FRP	SURFACE	2925'		

<<< Fold Here >>>

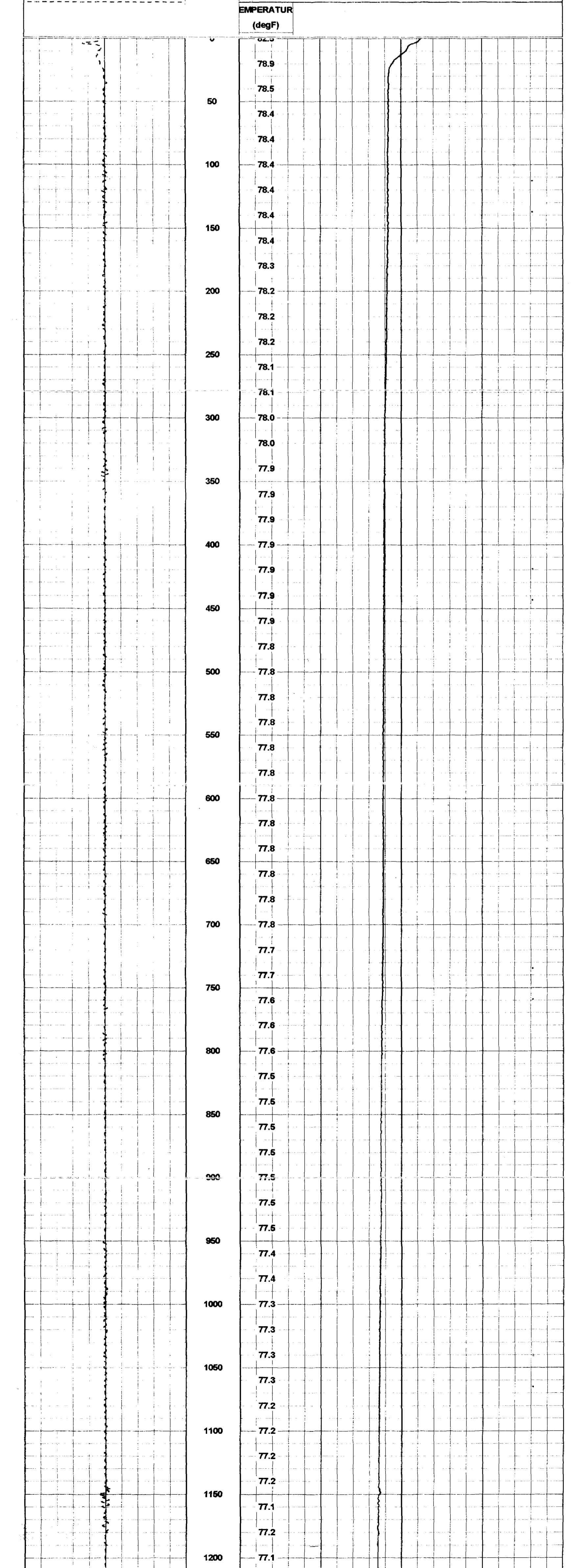
All interpretations are opinions based on inferences from electrical or other measurements and we cannot and do not guarantee the accuracy or correctness of any interpretation, and we shall not, except in the case of gross or willful negligence on our part, be liable or responsible for any loss, costs, damages, or expenses incurred or sustained by anyone resulting from any interpretation made by any of our officers, agents or employees. These interpretations are also subject to our general terms and conditions set out in our current Price Schedule.

Comments

**YOUNGQUIST BROTHERS, Inc**  
 GEOPHYSICAL LOGGING DIVISION

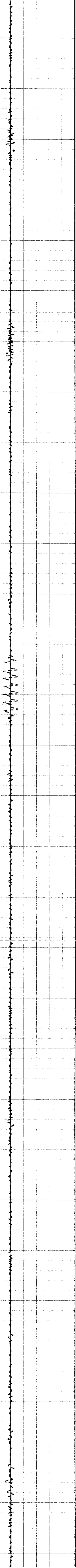
# TEMPERATURE

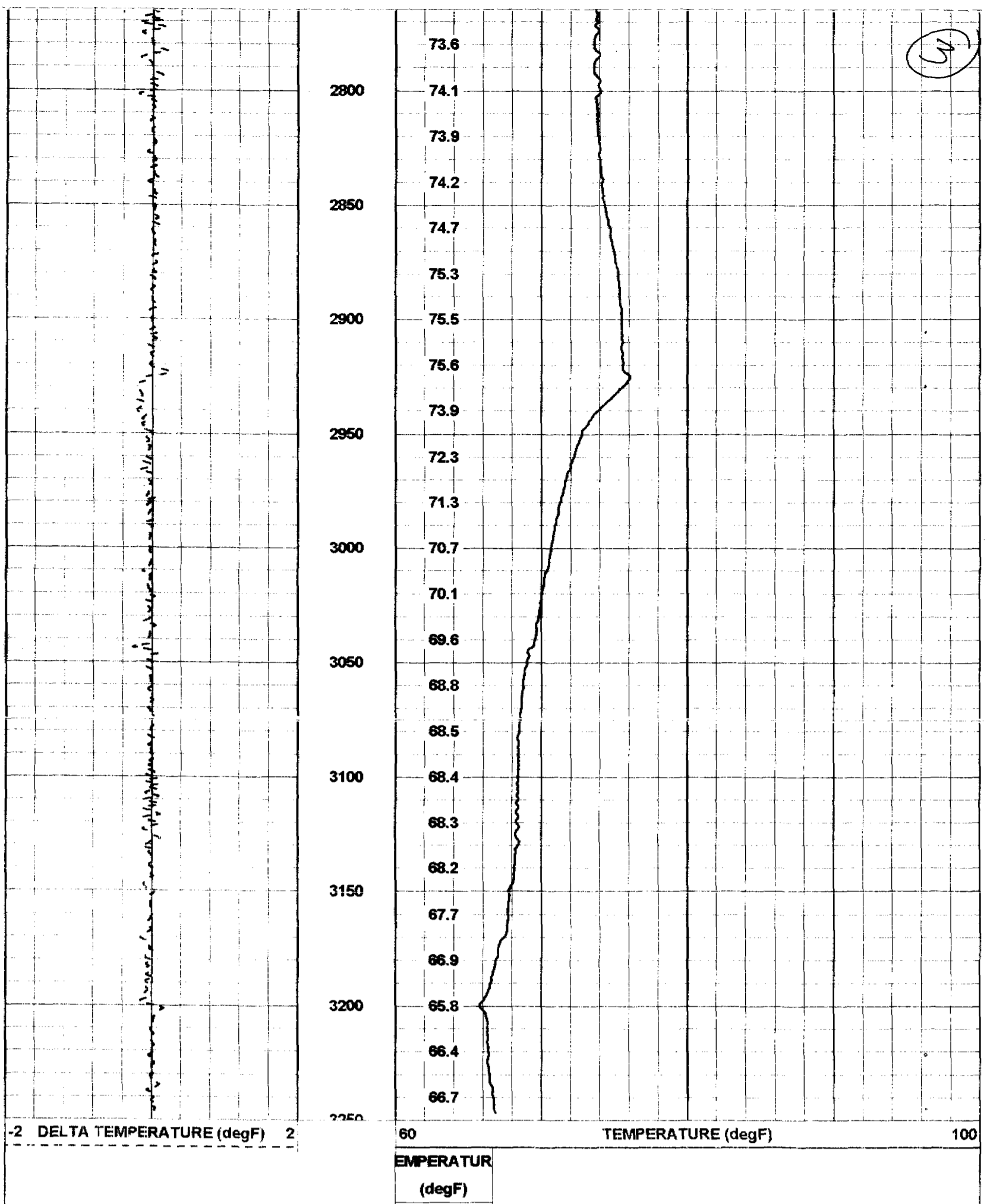
Database File: seaiw1-rts.db  
 Dataset Pathname: rts2010/pass1  
 Presentation Format: temp  
 Dataset Creation: Wed Aug 04 13:37:36 2010 by Log Open-Cased 090629  
 Charted by: Depth in Feet scaled 1:600



2

	77.1
1250	77.1
	77.0
	77.0
1300	77.0
	77.0
	77.0
1350	76.9
	77.0
1400	76.9
	76.9
	76.9
1450	76.9
	76.9
1500	76.8
	76.8
	76.7
1550	76.7
	76.6
1600	76.6
	76.6
	76.6
1650	76.6
	76.5
1700	76.5
	76.5
	76.5
1750	76.4
	76.4
1800	76.3
	76.3
	76.3
1850	76.3
	76.1
1900	76.3
	76.1
	76.1
1950	76.0
	76.0
2000	76.0
	75.9
	76.0
2050	75.9
	76.0
2100	76.0
	76.1
	76.0
2150	75.9
	75.7
2200	75.5
	75.5
	75.5
2250	75.4
	75.4
2300	75.3
	75.3
	75.2
2350	75.2
	75.1
2400	75.1
	75.1
	75.1
2450	75.0
	75.0
2500	74.9
	74.9
	74.7
2550	74.7
	74.7
	74.7
2600	74.7
	74.6
	74.4
2650	74.3
	74.0
2700	74.1
	74.0
	73.8
2750	73.8





Sensor	Offset (ft)	Schematic	Description	Len (ft)	OD (in)	Wt (lb)
TEMP	0.10		TEMP-RTS (954)	25.50	1.69	70.00

Dataset: sea1w1-rt5.db: field/well/rt52010/pass1  
 Total Length: 25.50 ft  
 Total Weight: 70.00 lb  
 O.D.: 1.69 in

Calibration Report

Database File: sea1w1-rt5.db  
 Dataset Pathname: rt52010/pass1  
 Dataset Creation: Wed Aug 04 13:37:36 2010 by Log Open-Cased 090629

Temperature Calibration Report

Serial Number: 954  
 Tool Model: RTS  
 Performed: Tue Feb 27 11:24:16 2007

Point #	Reading	Reference
1	338.01 cps	34.00 degF
2	789.32 cps	78.00 degF
3	1553.26 cps	152.00 degF
4	cps	degF
5	cps	degF
6	cps	degF
7	cps	degF
8	cps	degF
9	cps	degF
10	cps	degF