

Company **SEACOAST UTILITY AUTHORITY**
 Well **HR IW-1**
 Field **HOOD ROAD W.T.P.**
 County **PALM BEACH** State **FL**
 Location
 Other Services
 SEE COMMENTS
 Elevation
 K.B. D.F. G.L.

Date	10-JAN-2010
Run Number	SIX
Depth Driller	2305'
Depth Logger	2312'
Bottom Logged Interval	2312'
Top Log Interval	SURFACE
Open Hole Size	12.25"
Type Fluid	NA
Density / Viscosity	NA
Max. Recorded Temp.	NA
Estimated Cement Top	NA
Time Well Ready	ON ARRIVAL
Time Logger on Bottom	1400
Equipment Number	103
Location	FT MYERS
Recorded By	MOREY
Witnessed By	SCHILLING, M

<<< Fold Here >>>

All interpretations are opinions based on inferences from electrical or other measurements and we cannot and do not guarantee the accuracy or correctness of any interpretation, and we shall not, except in the case of gross or willful negligence on our part, be liable or responsible for any loss, costs, damages, or expenses incurred or sustained by anyone resulting from any interpretation made by any of our officers, agents or employees. These interpretations are also subject to our general terms and conditions set out in our current Price Schedule.

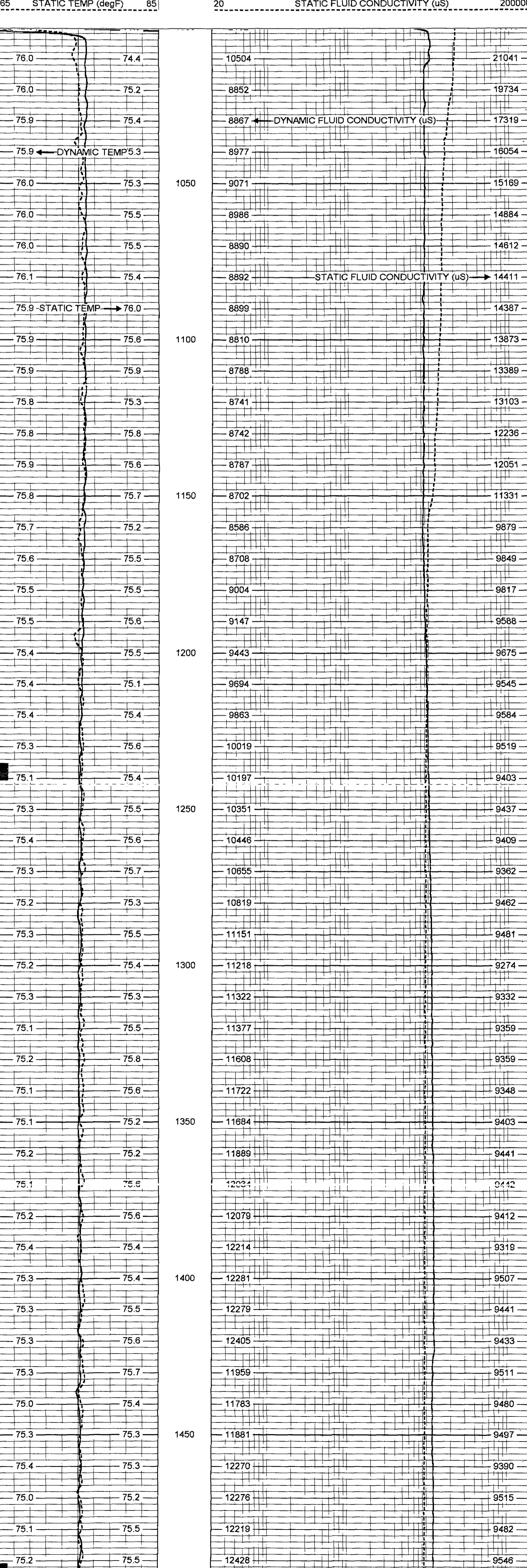
Comments

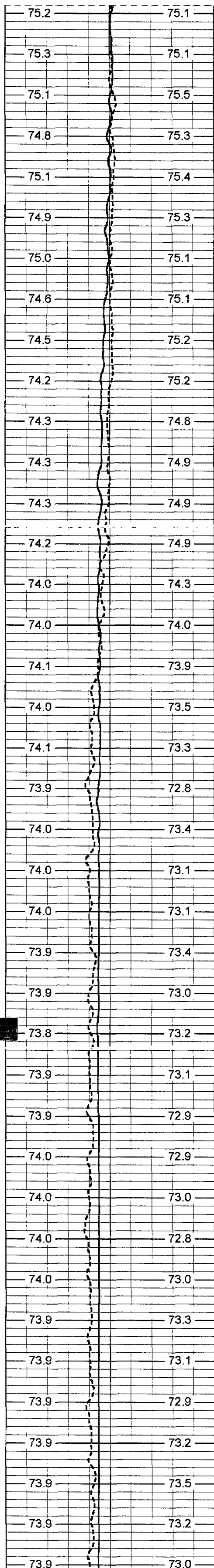
X-Y CALIPER/GAMMA RAY
 DUAL INDUCTION
 BOREHOLE SONIC
 FLOWMETER
 VIDEO

DYNAMIC FLOW RATE 265 GPM

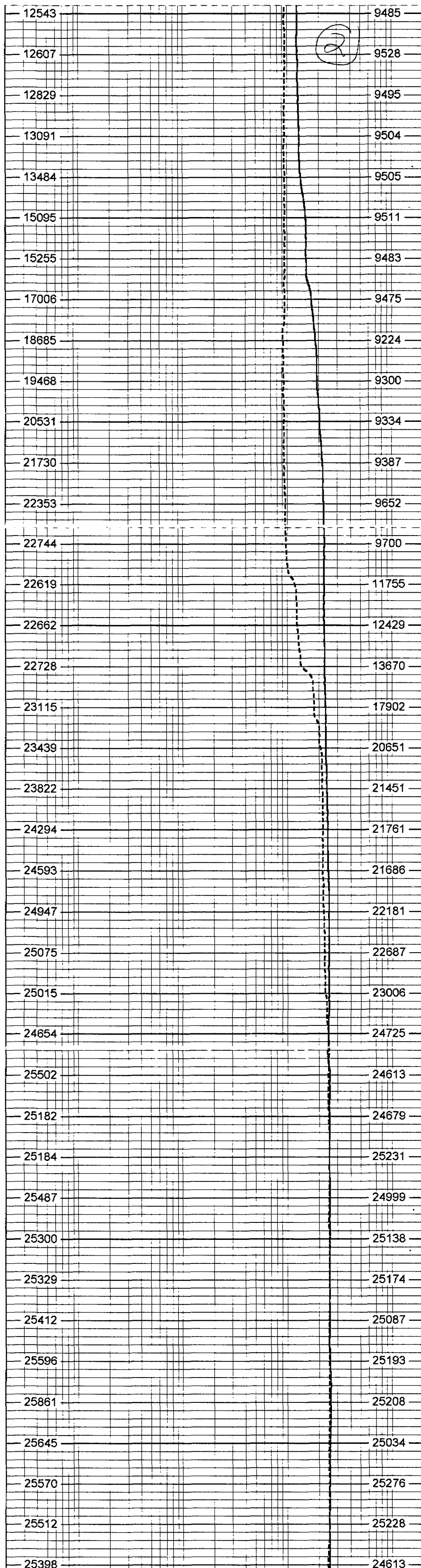
YOUNGQUIST BROTHERS, Inc
 GEOPHYSICAL LOGGING DIVISION
MERGED FCT

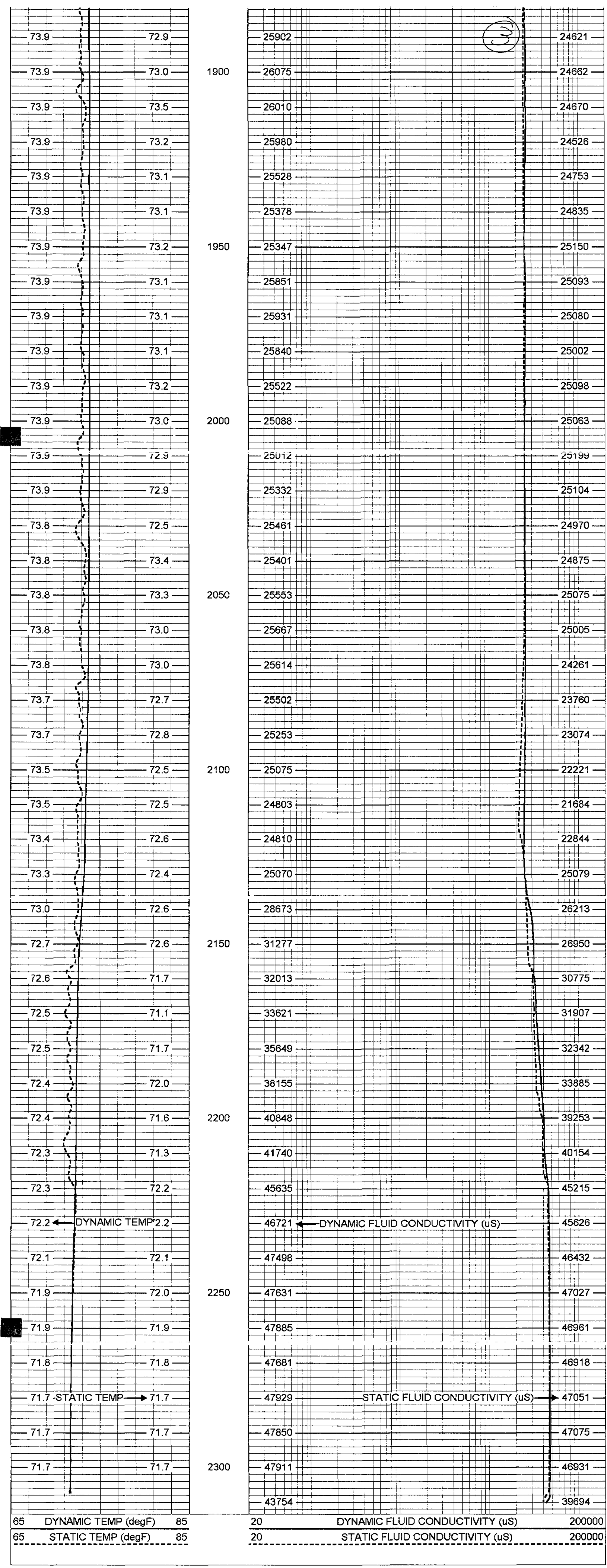
Database File: seaIW1.db
 Dataset Pathname: run6/pass12
 Presentation Format: fct_mg
 Dataset Creation: Sun Jan 10 21:53:21 2010 by Log 6.2_B4
 Charted by: Depth in Feet scaled 1:240





1500
1550
1600
1650
1700
1750
1800
1850





FRT Calibration Report

Serial Number:	31		
Tool Model:	SONDEX		
Performed:	Thu May 07 11:24:43 2009		
Point #	Reading		Reference
1	31.558	cps	1000.000
2	177.254	cps	10000.000
3	449.141	cps	25000.000
4	974.013	cps	50000.000
5		cps	
6		cps	

Temperature Calibration Report

Serial Number:	31			
Tool Model:	SONDEX			
Performed:	Thu May 07 11:36:30 2009			
Point #	Reading		Reference	
1	114.403	cps	38	degF
2	325.061	cps	81	degF
3	694.843	cps	156	degF

