

680614

**FLORIDA**  
GEOPHYSICAL LOGGING, INC.  
HIGH RESOLUTION TEMPERATURE  
FL. RESISTIVITY

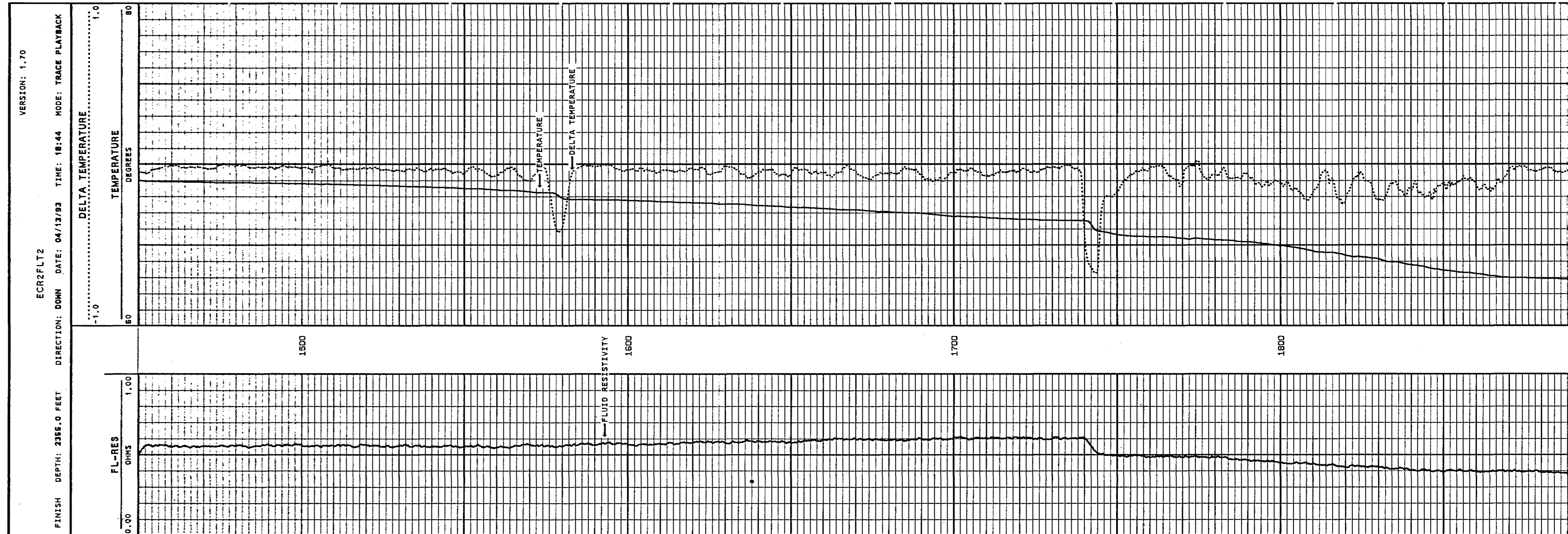
REPORT QUALITY  
 COMPANY YOUNGQUIST BROTHERS DRILLING CO. INC.  
 WELL IW2 DZMW  
 FIELD WEST PALM BEACH  
 COUNTY PALM BEACH STATE FLORIDA  
 LOCATION EAST CENTRAL REGIONAL WASTEWATER TREATMENT PLANT  
 OTHER SERVICES: XY CAL/GR DIL BHC SONIC  
 SEC. \_\_\_\_\_ TWP. \_\_\_\_\_ RGE. \_\_\_\_\_

PERMANENT DATUM PAD ELEV. \_\_\_\_\_  
 LOG MEASURED FROM PAD FT. ABOVE PERMANENT DATUM  
 DRILLING MEASURED FROM PAD  
 ELEV.: K.B. \_\_\_\_\_  
 D.F. \_\_\_\_\_  
 G.L. \_\_\_\_\_

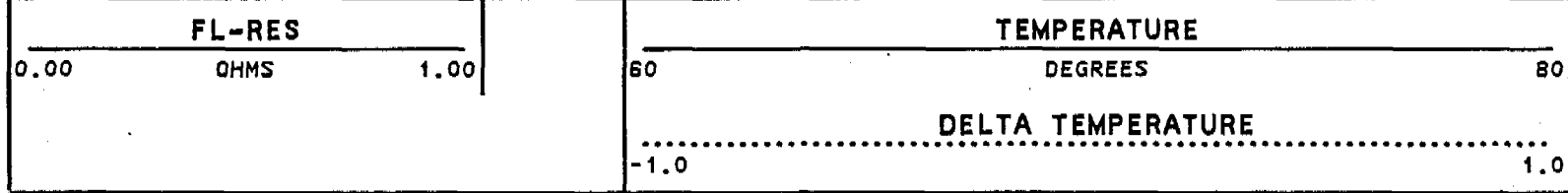
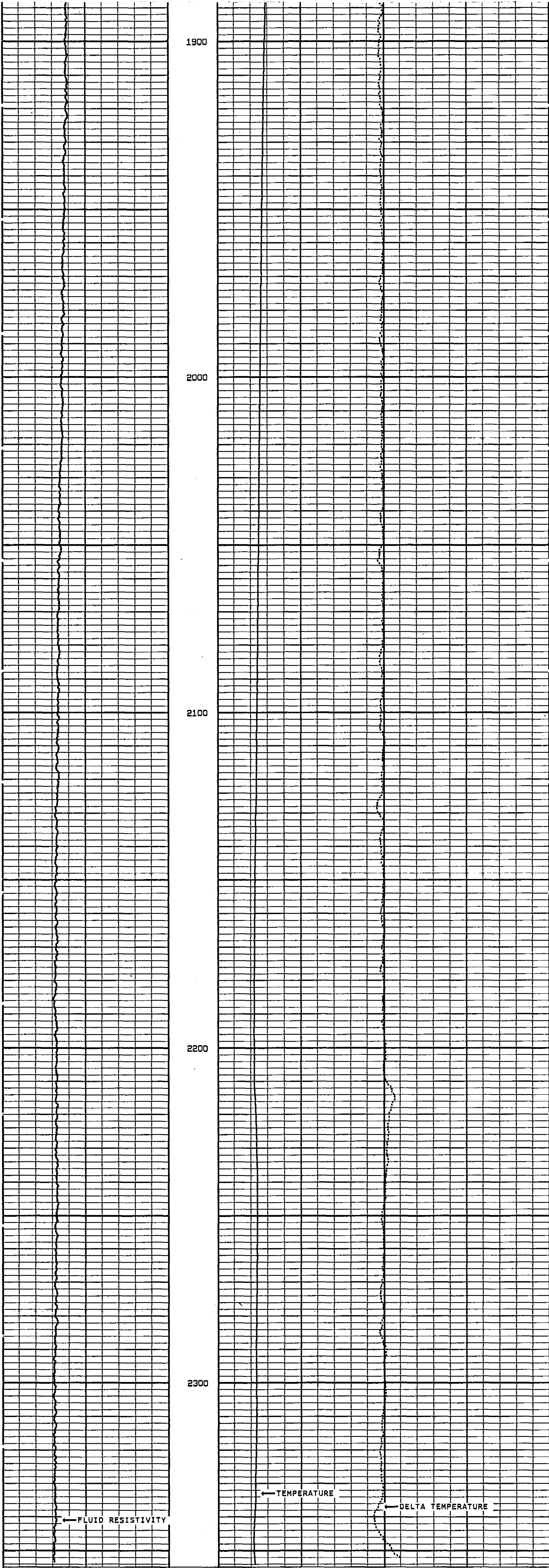
DATE 13-APR-93  
 RUN NO. FOUR  
 TYPE LOG FL RES HRT  
 DEPTH-DRILLER 2360  
 DEPTH-LOGGER 2355  
 LOGGED INTERVAL 2355 TO 1450 TO \_\_\_\_\_  
 OPERATING RIG TIME 1 1/2 HR  
 TYPE FLUID IN HOLE WATER  
 SALINITY, PPM CL \_\_\_\_\_  
 DENSITY-VISCOSITY 8.35  
 LEVEL 33'  
 MAX. REC. TEMP, DEG F. \_\_\_\_\_  
 EQUIPMENT-LOCATION FT. MYERS  
 RECORDED BY VANOSDOL/ MILLER  
 WITNESSED BY W. CURTIS/T. MOORE

BOREHOLE RECORD				CASING RECORD			
RUN NO.	BIT	FROM	TO	SIZE	WGT.	FROM	TO
ONE	12 1/4"	CSG	1550'	20"		SURF	260'
TWO	18 1/2"	CSG	1560'	12"	.375"	SURF	1550'
FOUR	11 3/4"	CSG	2360'				

ALL INTERPRETATIONS ARE OPINIONS BASED ON INFERENCES FROM ELECTRICAL OR OTHER MEASUREMENTS AND WE CANNOT AND DO NOT GUARANTEE THE ACCURACY OR CORRECTNESS OF ANY INTERPRETATION, AND WE SHALL NOT, EXCEPT IN THE CASE OF GROSS OR WILLFULL NEGLIGENCE ON OUR PART, BE LIABLE OR RESPONSIBLE FOR ANY LOSS, COSTS, DAMAGES, OR EXPENSES INCURRED OR SUSTAINED BY ANYONE RESULTING FROM ANY INTERPRETATION MADE BY ANY OF OUR OFFICERS, AGENTS OR EMPLOYEES. THESE INTERPRETATIONS ARE ALSO SUBJECT TO OUR GENERAL TERMS AND CONDITIONS SET OUT IN OUR CURRENT PRICE SCHEDULE.



2



START DEPTH: 1450.2 FEET    DIRECTION: DOWN    DATE: 04/13/93    TIME: 16:37    MODE: TRACE PLAYBACK  
 ECR2FLT2  
 VERSION: 1.70

COMPANY YOUNQUIST BROTHERS DRILLING  
EAST CENTRAL REGIONAL WTP  
 WELL IW2 DZMW  
 FIELD PALM BEACH CO.    STATE FLORIDA

