

Company **CAMP DRESSER & MCKEE INC**  
Well **IW #7**  
Field **WEST PALM BEACH**  
County **PALM BEACH**  
State **FLORIDA**

Company **CAMP DRESSER & MCKEE INC.**  
Well **IW #7**  
Field **EAST CENTRAL REGIONAL W.R.F**  
County **PALM BEACH** State **FLORIDA**  
Location

Permanent Datum **PAD** Elevation  
Log Measured From **PAD**  
Drilling Measured From **PAD**

Date **DEC-06-2003**  
Run Number **SEVENTEEN**  
Depth Driller **3450'**  
Bottom Logged Interval **3450'**  
Top Log Interval **SURFACE**  
Open Hole Size **12.25"**  
Type Fluid **WATER**  
Density / Viscosity **NA**  
Max. Recorded Temp. **NA**  
Estimated Cement Top **NA**  
Time Well Ready **ON ARRIVAL**  
Time Logger on Bottom **0000**  
Equipment Number **102**  
Location **FT. MYERS LEE**  
Recorded By **K.HOPFENSPIERGER**  
Witnessed By

Other Services **SEE COMMENTS**  
Elevation **K.B. D.F. G.L.**

Borehole Record		Borehole Record	
Run Number	Bit	From	To
FIFTEEN	34.5"	CASING	2977'
SEVENTEEN	12.25"	CASING	3450'

Casing Record		Well	
Size	From	Well	Bottom
54"	375 W.T.	114'	114'
44"	375 W.T.	1017'	1017'
36"	375 W.T.	2200'	2200'
26"	500 W.T.	2962'	2962'

<<< Fold Here >>>

All interpretations are opinions based on inferences from electrical or other measurements and we cannot and do not guarantee the accuracy or correctness of any interpretation, and we shall not, except in the case of gross or willful negligence on our part, be liable or responsible for any loss, costs, damages, or expenses incurred or sustained by anyone resulting from any interpretation made by any of our officers, agents or employees. These interpretations are also subject to our general terms and conditions set out in our current Price Schedule.

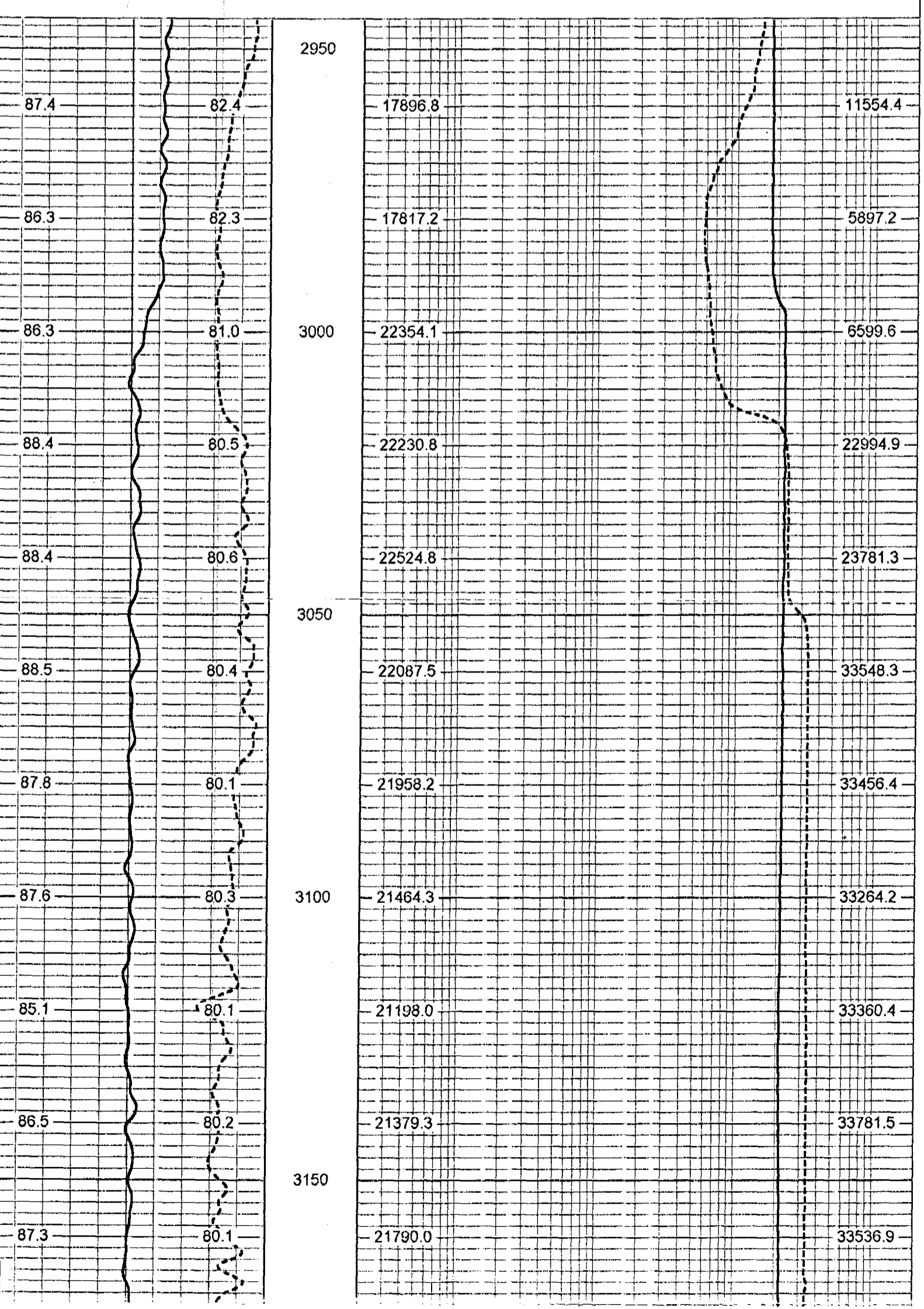
Comments

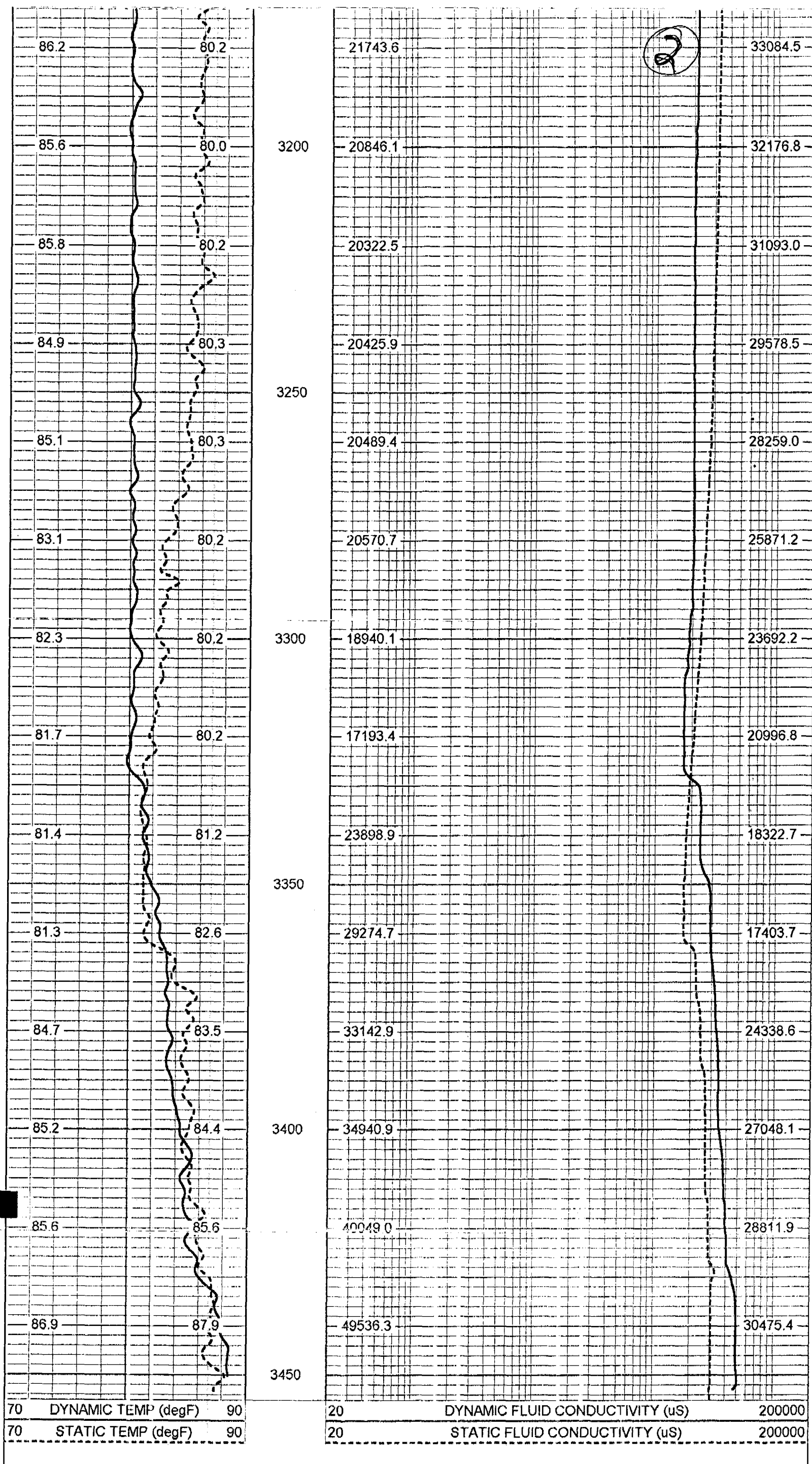
XYC/GR  
DIL/LL3/SP  
BHC/SONIC/VDL  
FLOWMETER  
DHTVS  
(FLOWRATE=120GPM)

**YOUNGQUIST BROTHERS, Inc** **STATIC & DYNAMIC**  
GEOPHYSICAL LOGGING DIVISION

Database File: wpbiw7.db  
Dataset Pathname: run17/FRTDYN2  
Presentation Format: frt\_mg  
Dataset Creation: Sat Dec 06 21:05:39 2003  
Charted by: Depth in Feet scaled 1:240

70	DYNAMIC TEMP (degF)	90	20	DYNAMIC FLUID CONDUCTIVITY (uS)	200000
70	STATIC TEMP (degF)	90	20	STATIC FLUID CONDUCTIVITY (uS)	200000





**FRT Calibration Report**

Serial Number:	31		
Tool Model:	SONDEX		
Performed:	Mon Apr 07 10:06:59 2003		
Point #	Reading		Reference
1	31.620	cps	1000.000
2	186.461	cps	10000.000
3	478.792	cps	25000.000
4	1027.350	cps	50000.000
5		cps	
6		cps	

**Temperature Calibration Report**

Serial Number:	31			
Tool Model:	SONDEX			
Performed:	Mon Apr 07 10:25:47 2003			
Point #	Reading		Reference	
1	118.668	cps	36	degF
2	299.16	cps	77	degF
3	700.794	cps	160	degF

