

87019R



COMPANY NORTH DADE M.M.T.P.
 WELL 1M #4
 FIELD NORTH DADE
 COUNTY DADE STATE FLORIDA
 LOCATION STATE FLORIDA
 OTHER SERVICES: NONE

PERMANENT DATUM PAD LEVEL ELEV. _____ FT. ABOVE PERMANENT DATUM
 LOG MEASURED FROM PAD FT. ABOVE PERMANENT DATUM
 DRILLING MEASURED FROM PAD
 SEC. _____ TWP _____ RGE _____
 ELEV.: K.B. _____
 D.F. _____
 G.L. _____

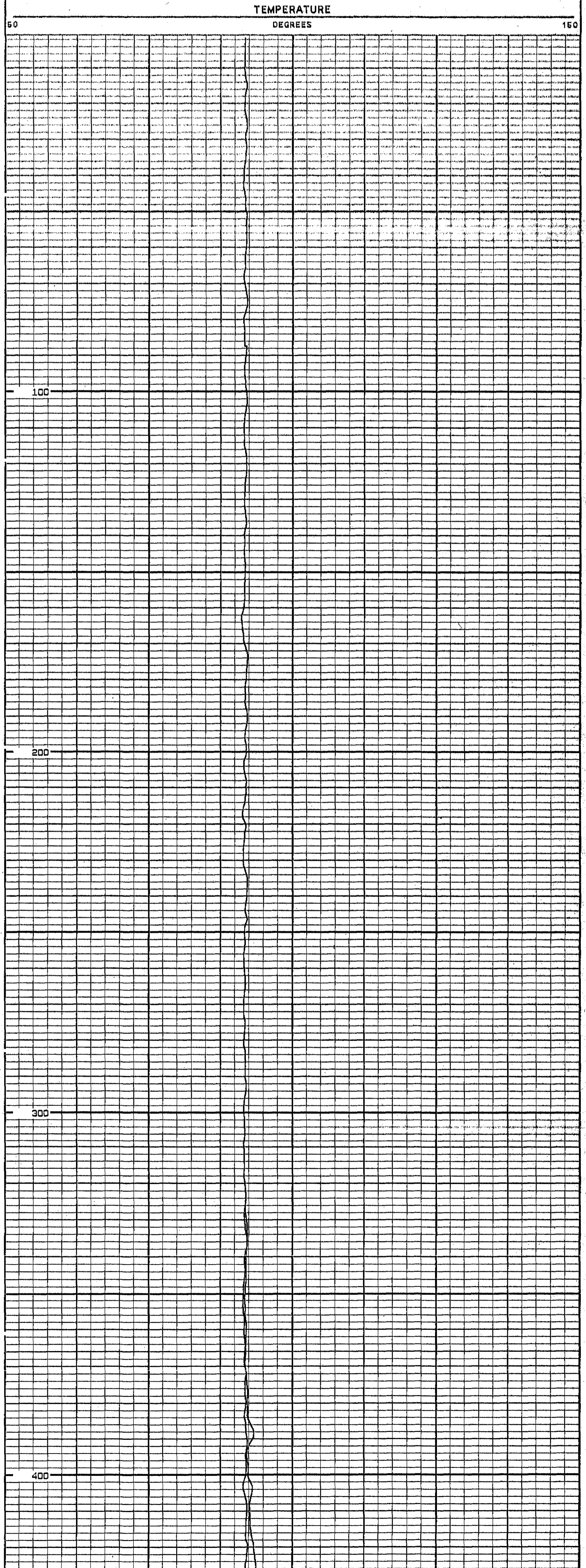
DATE 20-SEPTEMBER-1996

RUN NO. THREE
 TYPE LOG TEMPERATURE
 DEPTH-DRILLER 1530'
 DEPTH-LOGGER 1530'
 LOGGED INTERVAL 1530' TO SURFACE
 OPERATING RIG TIME 1 HOURS
 TYPE FLUID IN HOLE WATER
 SALINITY, PPM CL NA
 DENSITY-VISCOSITY FULL
 LEVEL
 MAX. REC. TEMP, DEG F. 112 DEGF
 EQUIPMENT-LOCATION 102 FTM
 RECORDED BY LEE
 WITNESSED BY Y. KAZI

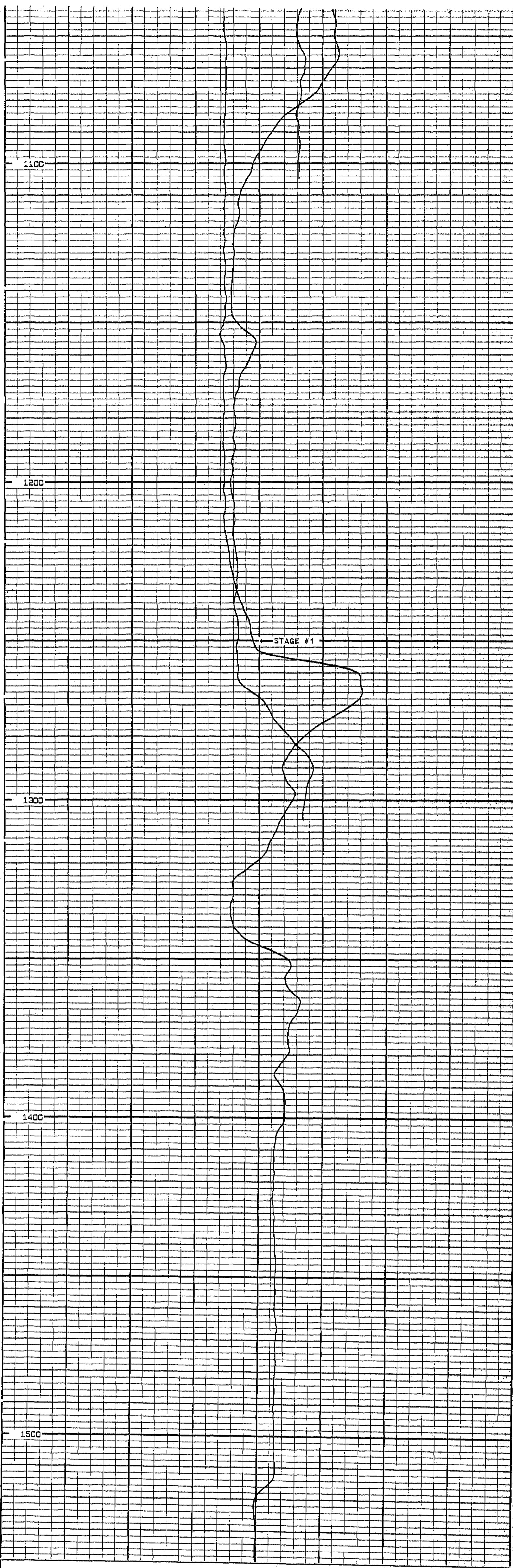
BOREHOLE RECORD		CASING RECORD	
RUN NO.	BIT FROM TO	SIZE	WT. FROM TO
ONE	64" 350' SURFACE	54"	.5 M.T. 350' SURFACE
TWO	52 1/2" 1530' CASING	44"	.5 M.T. 1530' SURFACE
THREE			

ALL INTERPRETATIONS ARE OPINIONS BASED ON INFERENCES FROM ELECTRICAL OR OTHER MEASUREMENTS AND WE CANNOT AND DO NOT GUARANTEE THE ACCURACY OR CORRECTNESS OF ANY INTERPRETATION, AND WE SHALL NOT, EXCEPT IN THE CASE OF GROSS OR WILLFULL NEGLIGENCE ON OUR PART, BE LIABLE OR RESPONSIBLE FOR ANY LOSS, COSTS, DAMAGES, OR EXPENSES INCURRED OR SUSTAINED BY ANYONE RESULTING FROM ANY INTERPRETATION MADE BY ANY OF OUR OFFICERS, AGENTS OR EMPLOYEES. THESE INTERPRETATIONS ARE ALSO SUBJECT TO OUR GENERAL TERMS AND CONDITIONS SET OUT IN OUR CURRENT PRICE SCHEDULE.

VERSION: 2.42
 FINISH DEPTH: 5.8 FEET DIRECTION: UP DATE: 09/20/86 TIME: 08:16:18 MODE: TRACE PLAYBACK



2



TEMPERATURE

50 DEGREES 150

START DEPTH: 1540.0 FEET DIRECTION: UP DATE: 09/20/96 TIME: 08:09:48 MODE: TRACE PLAYBACK
VERSION: 2.42

COMPANY NORTH DADE W.W.T.P.
WELL 1W #4
FIELD NORTH DADE STATE FLORIDA

