

Company **HAZEN & SAWYER**
 Well **IW #1**
 Field **CENTRAL W.T.P**
 County **BROWARD**
 State/Pr **FLORIDA 683282**
 Location **PLANTATION CENTRAL W.T.P.**
 County **BROWARD** State **FLORIDA**

Company **HAZEN & SAWYER, P.C.**
 Well **INJECTION WELL #1**
 Field **PLANTATION CENTRAL W.T.P.**
 County **BROWARD** State **FLORIDA**

Date **23-MARCH-2002**
 Run Number **THREE**
 Depth Diller **3340**
 Depth Logger **2650**
 Bottom Logged Interval **2650'**
 Top Log Interval **14**
 Open Hole Size **14**
 Type Fluid **WATER**
 Density / Viscosity **NA**
 Max. Recorded Temp. **90 DEGF**
 Estimated Cement Top **NA**
 Time Well Ready **ON ARRIVAL**
 Time Logger on Bottom **0000**
 Equipment Number **102**
 Location **FT MYERS**
 Recorded By **LEE**
 Witnessed By **J.LARGY**

Run Number	Bit	Bottom	Run Number	Bit	Bottom
	Borehole Record	Top		Borehole Record	Top
		Bottom			Bottom
	Size	Wd/Fr		Top	Bottom
	16"	500 W.I		SURFACE	277'
	11.78"	FRP		SURFACE	2650'

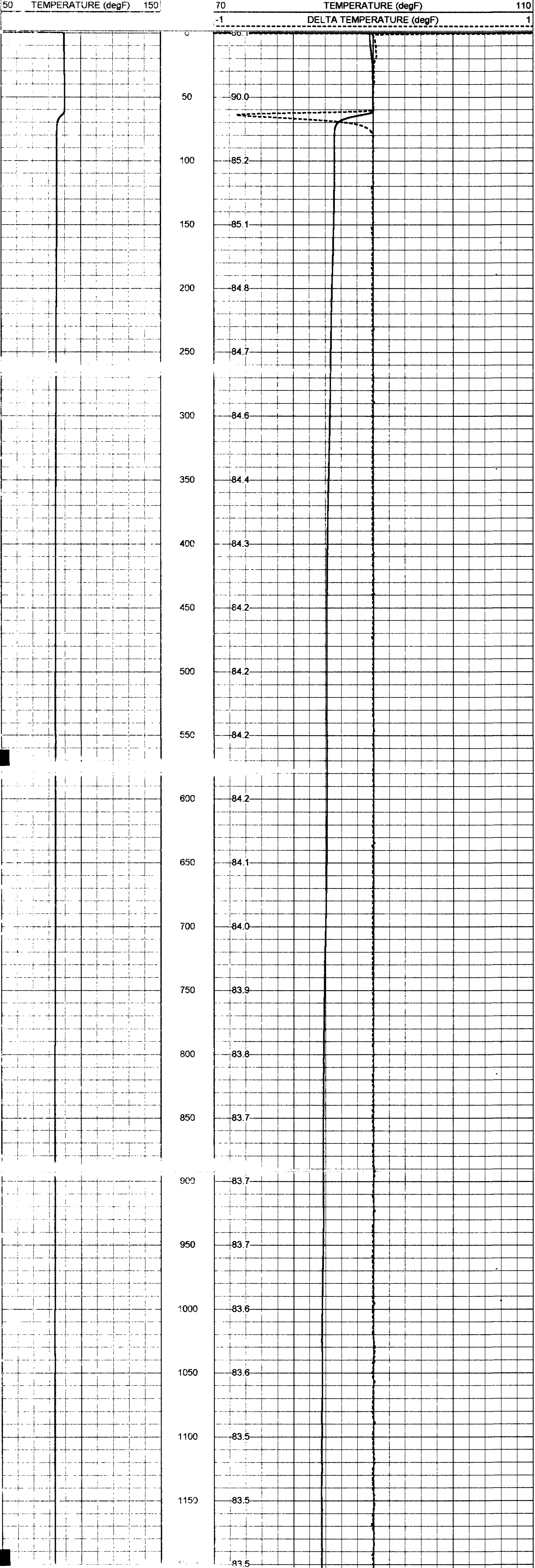
All interpretations are opinions based on inferences from electrical or other measurements and we cannot and do not guarantee the accuracy or correctness of any interpretation, and we shall not, except in the case of gross or willful negligence on our part, be liable or responsible for any loss, costs, damages, or expenses incurred or sustained by anyone resulting from any interpretation made by any of our officers, agents or employees. These interpretations are also subject to our general terms and conditions set out in our current Price Schedule.

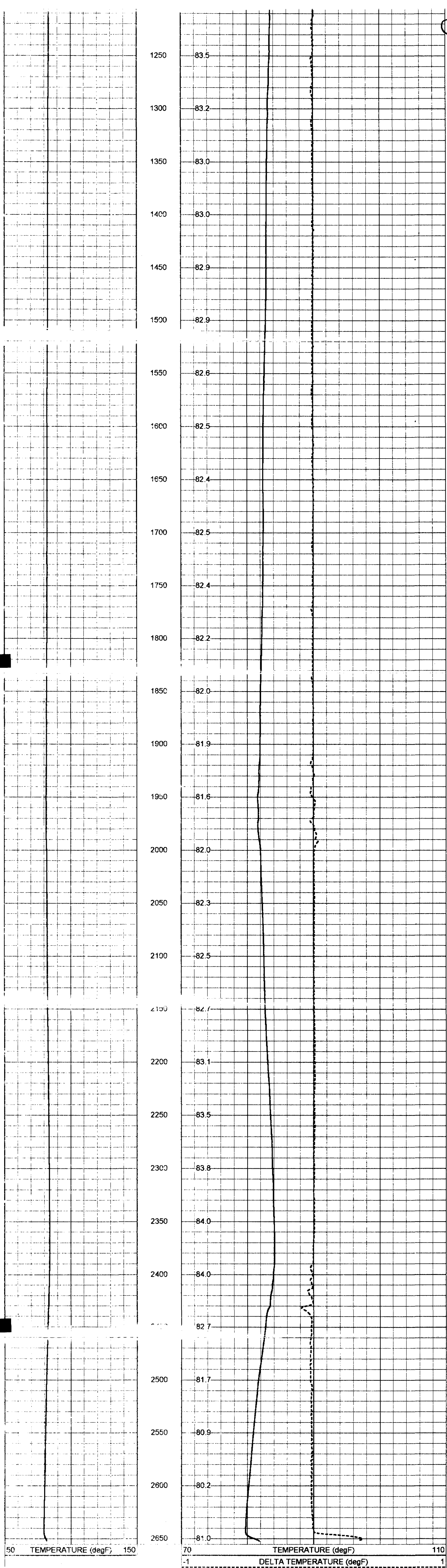
Comments

OTHER SERVICES:
 NONE

TEMPERATURE

Database File: **plantc1.db**
 Dataset Pathname: **run3/FRPTEMP***
 Dataset Creation: **Sun Mar 24 10:26:00 2002 by Log VER_5.4**
 Charted by: **Depth in Feet scaled 1:600**





Temperature Calibration Report

Serial Number:	10
Tool Model:	MLS
Performed:	Wed May 23 03:51:46 2001

Point #	Reading	Reference
1	200 cps	35 degF
2	518 cps	85 degF
3	900 cps	155 degF

