

677693

Schlumberger

HIGH RESOLUTION TEMPERATURE LOG

CSU Field Log

COMPANY: YOUNGQUIST BROTHERS DRILLING
 WELL: PLANTATION R/D REJECT INJECTION WELL #1
 FIELD: PLANTATION
 COUNTY: BROWARD
 STATE: FLORIDA
 LOCATION: CITY OF PLANTATION
 MEMBRANE SOFTENING FACILITY

PERMANENT DATUM: PAD
 ELEV. OF PERM. DATUM: 7.2 F
 LOG MEASURED FROM: PAD
 10.6 F ABOVE PERM. DATUM
 DRLG. MEASURED FROM: PAD

DATE: 11 JUL 90
 RUN NO: FOUR

DEPTH-DRILLER: 3340.0 F
 DEPTH-LOGGER: 3334.0 F
 BIT. LOG INTERVAL: 3334.0 F
 TOP LOG INTERVAL: 2778.0 F
 CASING-DRILLER: 2780.0 F
 CASING-LOGGER: 2778.0 F
 CASING: 16"
 WEIGHT: 14 3/4"
 BIT SIZE: 3340.0 F
 DEPTH: 3340.0 F

ELEVATIONS-
 KB: 17.8 F
 DF: 7.2 F
 GL: 7.2 F

OTHER SERVICES-
 DIL/SFL
 BHC/VDL
 X-Y CALIPER
 FIL
 FLUID R'S
 TEMP

PROGRAM
 TAPE NO: 32.2
 SERVICE
 ORDER NO: 556744

TYPE FLUID IN HOLE: GEL
 DENSITY: 9.00 LB/G

MAX. REC. TEMP:

LOGGING UNIT NO: 8193
 LOGGING UNIT LOC: FORT MYERS
 RECORDED BY: S.MILLER
 WITNESSED BY: KEVIN/PENNY

REMARKS:
 HRT TEMPERATURE TOOL IS CENTRALIZED.

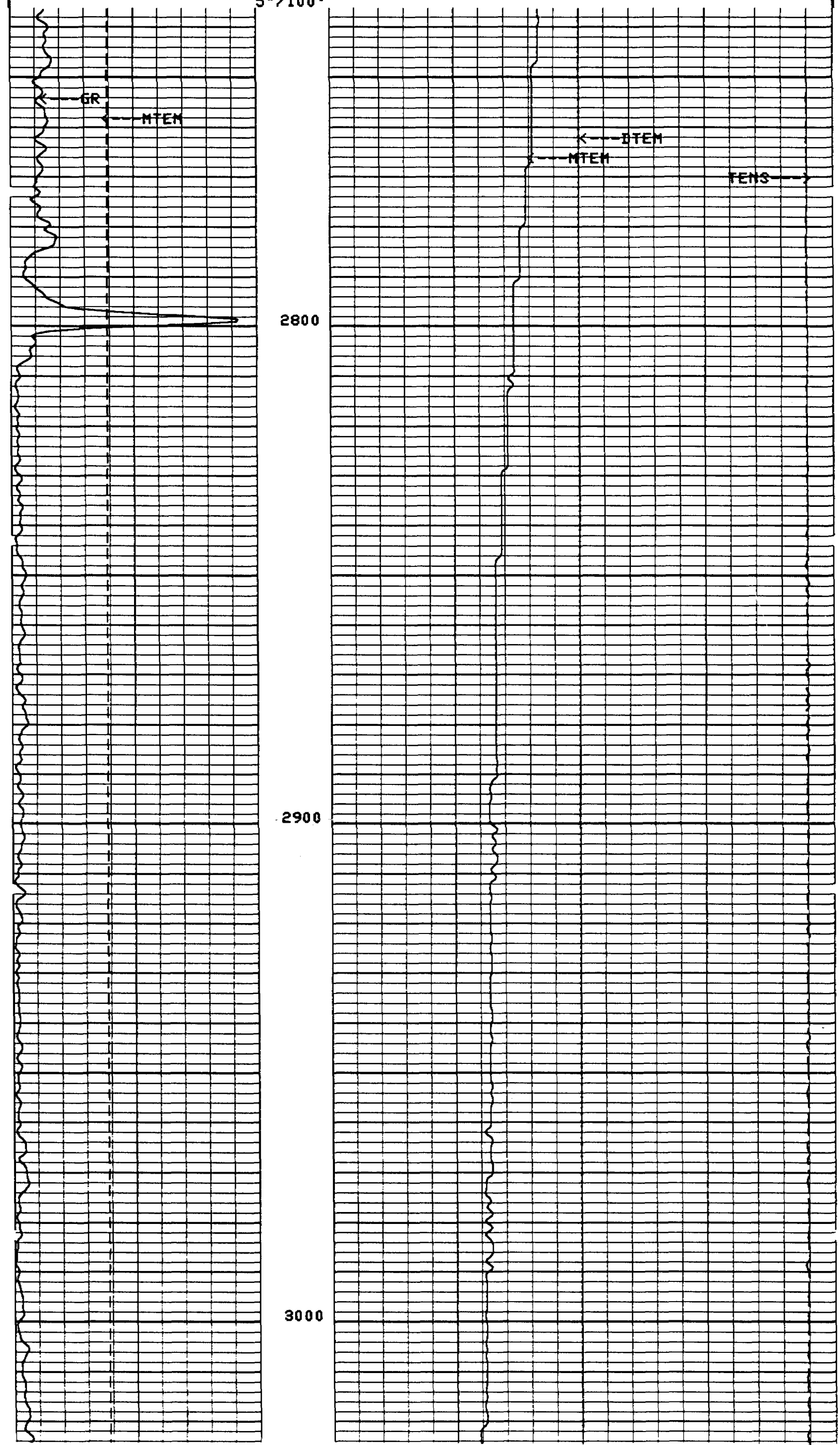
EQUIPMENT NUMBERS-

ALL INTERPRETATIONS ARE OPINIONS BASED ON INFERENCES FROM ELECTRICAL OR OTHER MEASUREMENTS AND WE CANNOT, AND DO NOT GUARANTEE THE ACCURACY OR CORRECTNESS OF ANY INTERPRETATIONS, AND WE SHALL NOT, EXCEPT IN THE CASE OF GROSS OR WILLFUL NEGLIGENCE ON OUR PART, BE LIABLE OR RESPONSIBLE FOR ANY LOSS, COSTS, DAMAGES OR EXPENSES INCURRED OR SUSTAINED BY ANYONE RESULTING FROM ANY INTERPRETATION MADE BY ANY OF OUR OFFICERS, AGENTS OR EMPLOYEES. THESE INTERPRETATIONS ARE ALSO SUBJECT TO OUR GENERAL TERMS AND CONDITIONS AS SET OUT IN OUR CURRENT PRICE SCHEDULE.

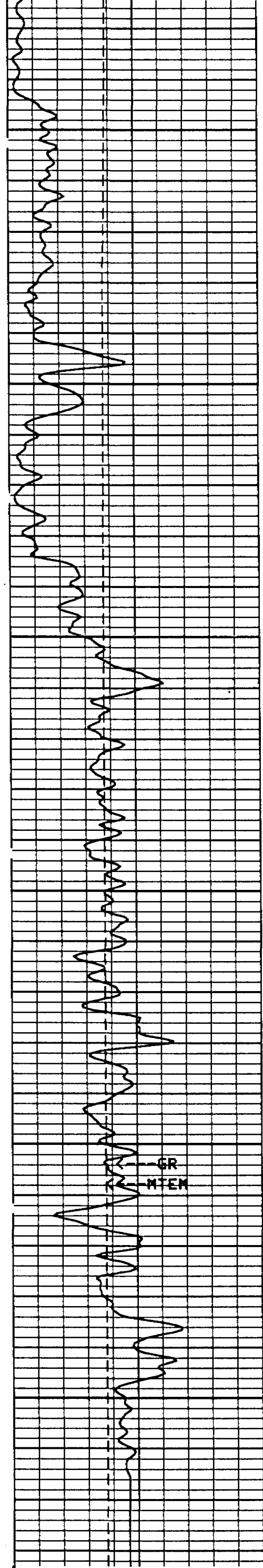
CP 32.2 FILE 4 11-JUL-1990 20:45

GR(GAPI)	100.00	0.0	10000.	0.0
MTEM(DEGF)	150.00	55.000	DTEM(DF/F)	10000
			MTEM(DEGF)	65.000

CP 32.2 FILE 4 11-JUL-1990 20:33
 INPUT FILE(S) DATA ACQUIRED
 2 11-JUL-1990 14:45
 2 NA



2

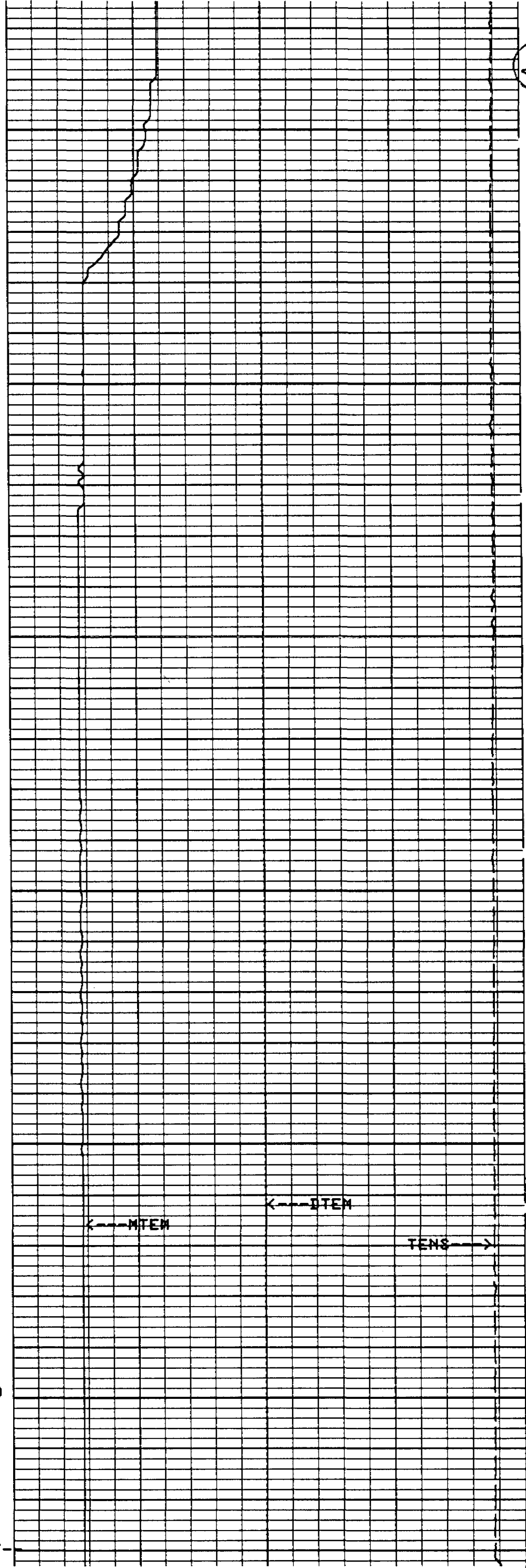


3100

3200

3300

FR HRT-
5"/100'



MTEM

ITEM

TENS

CP 32.2

FILE 4

11-JUL-1990 20:31

INPUT FILE(S)
2
2

DATA ACQUIRED
11-JUL-1990 14:36
NA

GR(GAPI)		TENS(LBF)	
0.0	100.00	10000.	0.0
MTEM(DEGF)		DTEM(DF/F)	
0.0	150.00	-1.000	10000
		MTEM(DEGF)	
		55.000	65.000

PARAMETERS

NAME	VALUE	UNIT	NAME	VALUE	UNIT
PP	NORM		DD	0.0	F
DD2	0.0	F	DTCI	0.0	F
BS	14.7500	IN	BHS	OPEN	



HIGH RESOLUTION TEMPERATURE LOG